

WEBCAST & ON SITE AUCTION

By order of:

PP II
Plastics

Late Model Plastic Injection Molding Facility

Including: (25) Molders - 60 ton to 2,000 ton as late as 2010, Engel, Toshiba, Krauss Maffei, Sandretto, Toyo, Cincinnati Milacron, Sepro, Yushin & Wittman Robots as late as 2012, Granulators, Dryers, Zeiss CMM, Machine Tools, 10 Ton / 40 Ton Demag Bridge Cranes

**Bidding
Starts:
Thursday,
December 4th,
10:00 AM
(CST)**



**Inspection/
Preview:
Wednesday,
December 3rd
9:00 AM – 4:00 PM
(CST)**

**Location:
15160 New Ave,
Lockport, IL 60441**

VISIT OUR WEBSITE FOR COMPLETE AUCTION DETAILS



203-488-7020

The
Branford
GROUP
Equipment Auctions Worldwide
www.TheBranfordGroup.com

In conjunction with:



866-311-2807

www.perfectionindustrial.com



(25) Injection Molders From 60 to 2,000 Ton



2004

KRAUSS MAFFEI 1300 TON, 217 OZ.



2010

TOSHIBA 500 TON, 60 OZ.



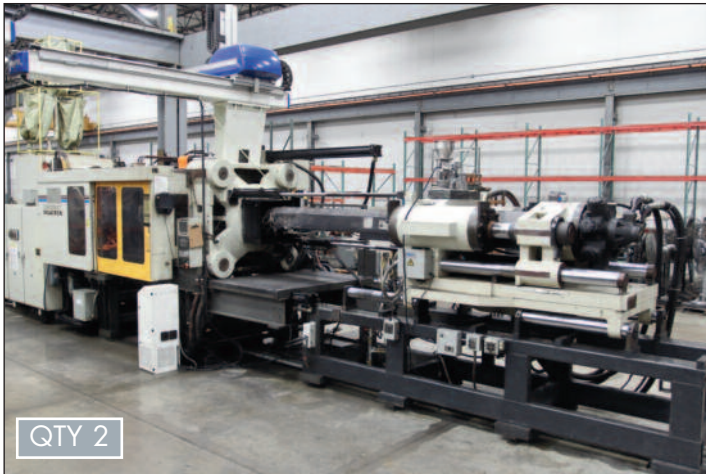
2004

ENGEL 450 TON, 41 OZ.



2005

ENGEL 660 TON, 80.5 OZ.



QTY 2

CINCINNATI 1,000 TON, 288 OZ.



2003

KRAUSS MAFFEI, 330 TON

See Page 5 For Injection Molder Spec Sheet

Overview photos



PRODUCTION AREA



SUPPORT EQUIPMENT



SANDRETTO MOLDERS

(11) Sandretto Injection Molders From 75 to 2,000 Ton



SANDRETTO 2,000 TON, 285 OZ



SANDRETTO 600 TON, 72.6 OZ



SANDRETTO 425 TON, 44 OZ



SANDRETTO 1000 TON



SANDRETTO 750 TON



SANDRETTO 75 TON

Large Qty of Late Model Robots (As late as 2012)



YUSHIN YA II-1300



YUSHIN YA II-800



SEPRO SUCCESS 22



SEPRO

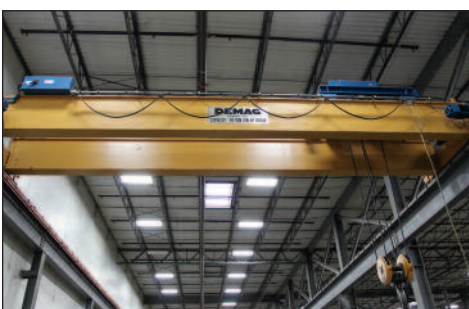


WITTMAN ROBOT



WITTMAN ROBOT

Overhead Double Girder Bridge Cranes Including 10/20/40 Ton



DEMAG 40 TON



DEMAG 40 TON



DEMAG 10 TON

Plastics Support

Including Color Blenders, Temperature Controllers, Grinders, Air Compressors, Dryers, QA, Toolroom, Hot Runners, Chillers, Pallet Racking, and So Much More



Support Equipment



WEBCAST & ON SITE AUCTION

By order of:

PP IL
Plastics

Late Model Plastic Injection Molding Facility

Bidding Starts: Thursday, December 4th, 2014 at 10:00 AM (CST)

Inspection/Preview: Wednesday, December 3rd from 9:00 AM – 4:00 PM (CST)

Location: 15160 New Ave, Lockport, IL 60441

Payments

- All Sales will be conducted in US Dollars
- Acceptable forms of payment:
- Cash, Certified Funds, ACH or Wire Transfer,
- Company Check with a Bank letter
- Visa, Mastercard, American Express

Buyers Premium:

ON LOCATION BIDDERS: 15% BP

WEBCAST BIDDERS: 18%

Available Online:

- Extensive Photo Gallery
- Molder Spec Sheet
- Bidding Instructions
- Lot Catalog
- Removal Information and Contacts
- Complete Terms and Conditions
- Sale Order and Schedule

WEBCAST BIDDING

BID LIVE FROM THE COMFORT OF YOUR OFFICE OR HOME. WEBCAST BIDDING TAKES PLACE IN REAL-TIME VIA THE INTERNET, FROM ANYWHERE IN THE WORLD. FOR DETAILED INSTRUCTIONS OR TO REGISTER, VISIT US AT: WWW.THEBRANFORDGROUP.COM YOU CAN PREVIEW THE ASSETS ONLINE IN A DETAILED LOT LISTING WITH PHOTOGRAPHS. ALL YOU NEED IS INTERNET ACCESS.

This brochure is only a partial listing.

Please visit our website

www.TheBranfordGroup.com

for more detailed listings and photos.

Injection Molding Spec Sheet

| Located in Lockport, IL | | | | | | | | |
|-------------------------|-----|---------------|---------|--------------------|-----------------|----------------|--------|---------------|
| Plant Press ID | Age | | Tonnage | Shot Capacity (oz) | Tie Bar Spacing | Molding Height | | Daylight Max" |
| | | | | | | Min | Max | |
| 3 | 96' | Sandretto | 825 | 138 | 41.70" x 41.70" | 13.78" | 43.30" | 88.27" |
| 4 | 96' | Sandretto | 1200 | 170 | 48.42" x 48.42" | 17.70" | 53.00" | 106.30" |
| 5 | 93' | Sandretto | 1200 | 170 | 48.42" x 48.42" | 17.70" | 53.00" | 106.30" |
| 6 | 97' | Sandretto | 825 | 138 | 41.70" x 41.70" | 13.78" | 43.30" | 88.27" |
| 7 | 01' | Engel | 60 | 3.2 | Without | 7.48" | 13.00" | 20.47" |
| 8 | 96' | Toyo | 150 | 8.8 | 18.11" x 18.11" | 5.91" | 17.72" | 33.47" |
| 9 | 00' | Sandretto | 75 | 3.4 | 14.60" x 14.60" | 3.50" | 16.50" | 31.10" |
| 10 | 00' | Engel | 200 | 19.6 | Without | 9.84" | 27.56" | 37.40" |
| 11 | 00' | Engel | 200 | 19.6 | Without | 9.84" | 27.56" | 37.40" |
| 12 | 95' | Sandretto | 175 | 12.5 | 20.00" x 20.00" | 8.27" | 24.80" | 40.55" |
| 14 | N/A | Sandretto | 85 | 4.2 | 14.56" x 14.56" | 3.93" | 18.11" | 34.25" |
| 17 | 03' | Krauss Maffei | 330 | 33 | 27.97" x 24.82" | 9.00" | N/A | 45.25" |
| 18 | 03' | Krauss Maffei | 330 | 16.75 | 27.97" x 24.82" | 13.00" | N/A | 45.25" |
| 19 | 05' | Engel | 660 | 80.5 | 36.00" x 33.40" | 12.20" | 39.37" | 72.87" |
| 20 | 98' | Sandretto | 425 | 44 | 29.13" x 29.13" | 7.87" | 28.74" | 66.14" |
| 21 | 95' | Sandretto | 605 | 72.6 | 33.46" x 33.46" | 11.81" | 39.37" | 75.98" |
| 22 | 93' | Sandretto | 1200 | 198 | 48.42" x 48.42" | 17.70" | 53.00" | 106.30" |
| 23 | 00' | Sandretto | 2000 | 285 | 71.70" x 63.80" | 27.60" | 63.00" | 130" |
| 24 | 04' | Krauss Maffei | 1300 | 217 | 62.2" x 50.39" | 23.62" | 47.24" | 102.36" |
| 25 | 10' | Toshiba | 500 | 60 | 34.2 x 34.80 | 13.8" | 55.10" | 55" |
| 26 | 04' | Engel | 450 | 54 | 34.6 x 33.1 | 11.80" | 44.4" | 72" |
| 27 | 95' | Milacron | 1000 | 288 | 44.1" x 44.1" | 17.5" | 60" | 77.53 |
| 28 | 95' | Milacron | 1000 | 288 | 44.1" x 44.1" | 17.5" | 60" | 77.53 |
| 29 | 94' | Milacron | 850 | 140 | 45.3" x 37.4" | N/A | N/A | 75.6" |
| 30 | N/A | LG Goldstar | 1430 | 235 | 56.5" x 56.5" | N/A | N/A | 100" |

Please note: Information supplied by PP IL

Please note: Items and quantities are subject to prior sale, please view the lot catalog online prior to the auction for the complete and final offering.

Illinois Auctioneer License: William J. Gardner IL License #441.000802



**The
Branford**
GROUP
Equipment Auctions Worldwide



PRESORTED FIRST
CLASS MAIL
U.S. POSTAGE
PAID
Permit No. 80
Milford, CT

**896 Main Street
Branford, CT 06405**

WEBCAST & ON SITE AUCTION

By order of:

PPIL
Plastics

**Late Model
Plastic Injection
Molding Facility**

FIRST CLASS MAIL

FORWARDING SERVICE REQUESTED

Bidding Starts:

Thursday, December 4th, 2014
at 10:00 AM (CST)

Inspection/Preview:

Wednesday, December 3rd
from 9:00 AM – 4:00 PM (CST)

Location:

15160 New Ave, Lockport, IL 60441

WEBCAST & ON SITE AUCTION

By order of:

PPIL
Plastics

**Late Model Plastic
Injection Molding Facility**

Bidding Starts: Thursday, December 4th, 2014 at 10:00 AM (CST)

Inspection/Preview: Wednesday, December 3rd from 9:00 AM – 4:00 PM (CST)

Location: 15160 New Ave, Lockport, IL 60441



VISIT OUR WEBSITE FOR COMPLETE AUCTION DETAILS



203-488-7020

**The
Branford**
GROUP
Equipment Auctions Worldwide
www.TheBranfordGroup.com

In conjunction with:



**PERFECTION
Industrial Sales**

866-311-2807 www.perfectionindustrial.com