



PERFECTION
Industrial Sales

LIVE WEBCAST AUCTION

Former Assets of



Hess Industries, Inc.
metalforming process technologies

**A LATE MODEL CNC MACHINING
FACILITY – OVER 1,800 LOTS OFFERED**

**Over 1,800 Lots Featuring
Well Maintained Late Model
CNC Boring Mills, VMC's,
Turning Centers, EDM'S,
Grinders,
Support & Factory
Equipment**

1995



9.5" THRU HOLE

MONARCH SIDNEY 220 CNC LATHE

TOSHIBA BTD-13R22 HORIZONTAL BORING MILL

Sale Date: Tuesday, June 4, Beginning at 9:00 AM EDT

Location: 30257 Redfield Street, Niles, Michigan 49120

Inspection: Monday, June 3, 9:00 AM to 4:00 PM EDT or by Special Appointment

Online
Bidding
Available
Through **bidpath**.com



PERFECTION
Industrial Sales

Perfection Industrial Sales
ph 847-427-3333 • fax 847-427-8884
www.perfectionindustrial.com

Sale is Being Held in Conjunction With:



GLOBAL PARTNERS

www.gaauction.com

EttinGroup



www.ettingroup.com

CNC & MANUAL BORING MILLS, VERTICAL MACHINING CENTERS



TOHSIBA LTD-11ER16 HORIZONTAL BORING MILL



DEVLIEG 5K-96 CNC BORING MILL



NOMURA B100 RW BORING MILL



WOTAN B75T BORING MILL



SHIBAURA BFT 13C W2 BORING MILL



HAAS VF-8/50 VMC



HAAS VF-6/40 VMC



FADAL 6030 VMC

Sale is Being Held in Conjunction With:



VERTICAL MACHINING CENTERS, TURNING CENTERS

2 AVAILABLE



FADAL 4020 VMC



ENSHU 400 VMC



ENSHU VMC-530 VMC



MAZAK QT-20 TURNING CENTER



MAZAK SLANT TURN 20-ATC M/C TURNING CENTER



MAZAK M4 CNC LATHE

2 AVAILABLE



MAZAK QT-20 TURNING CENTER



MAZAK M5-1500 CNC LATHE

2 AVAILABLE

CNC & MANUAL BORING MILLS

1995 TOSHIBA BTD-13R22 CNC HORIZONTAL TABLE TYPE BORING MILL, S/N 421908, TOSNUC 777-2 4-Axis CNC Control, 5.12" Spl., Table: 70.8" x 86.6", Travels: X-118.1", Y-90.55", Spl. 62.990", 30 HP, 2,500 RPM

(2) 1994 TOSHIBA BTD-11ER16 CNC HORIZONTAL TABLE TYPE BORING MILL, S/N 441759, 441744, TOSNUC 732 CNC Control, 4.33" Spl., Table: 63" x 55", Travels: X-78", Y-59", 19.7" Spl., 20 HP, 2,500 RPM, Chip Conveyor

DeVLIEG 5K-96 CNC HORIZONTAL TABLE TYPE BORING MILL, S/N 9684, Retrofitted w/FANUC OM CNC Control, 5" Spl., Table: 50" x 96", Travels: X-72", Y-96", 26" Spl., 10 to 1,000 RPM, Power Draw Bar

5" SHIBAURA BFT 13C W2 HORIZONTAL TABLE TYPE BORING MILL, S/N 2779, Table 47" x 100", Travels: 68" Vertical, 100" Cross, 50" Long, 50 Taper w/Pwr Draw Bar, SONY 3-Axis DRO

4" NOMURA B100 RW HORIZONTAL TABLE TYPE BORING MILL, S/N 3741, Table: 56" x 63" w/Built in Rotary, Travels: 60" Vertical, 80" Cross, 50 Taper w/Pwr Draw Bar, ANILAM MINI WIZARD 3-Axis DRO

3" WOTAN B75T HORIZONTAL TABLE TYPE BORING MILL, S/N 58805, Table: 39" x 32" w/Built in Rotary, Travels: 40" Vertical, 42" Cross, 46" Long

VERTICAL MACHINING CENTERS

2004 HAAS VF-8/50 VERTICAL MACHINING CENTER, S/N 38853, Table: 64" x 36", Travels: X-64", Y-40", Z-30", Spl. to Table: 5"-35", 30 HP, 7,500 RPM, CT 50 Taper, 30+1 ATC

2003 HAAS VF-6/40 VERTICAL MACHINING CENTER, S/N 32612, Table: 64" x 28", Travels: X-64", Y-32", Z-30", Spl. to Table: 4"-34", 30 HP, 8,100 RPM, CT 40 Taper, 24+1 ATC

FADAL 6030 VERTICAL MACHINING CENTER, S/N 901067, 88 CNC Control Table: 62.5" x 30", Travels: X-60", Y-30", X-30", 22.5 HP, 10,000 RPM, CAT 40 Taper, 20+1 ATC

ENSHU VMC-530 VERTICAL MACHINING CENTER, S/N 138, FANUC 11M CNC Control, Table: 51.2" x 21.7", Travels: X-40", Y-21", Z-22.6", 40-4,000 RPM, CAT 50 Taper, 30 ATC, NIKKEN 16" 4th Axis w/Tailstock (sold separately)

(2) FADAL 4020 VERTICAL MACHINING CENTERS, S/N 9303164, 9303165, 88HS CNC Control, Table: 47" x 20", Travels: X-40", Y-20", Z-20", 15 HP, 10,000 RPM, CT 40 Taper, 21 ATC, RIGID Tap

ENSHU 400 VERTICAL MACHINING CENTER, s/n NA, FANUC 6M CNC Control, Table: 36" x 16", Travels: X-22.4", Y-16", Z-18.4", 7.5 kw, 80-8,000 RPM

FADAL VMC 40 VERTICAL MACHINING CENTER, S/N 8607490

TURNING CENTERS

MONARCH SIDNEY 220 CNC LATHE, S/N 54071, FANUC 11T CNC Control, 150" Centers, 36" Max. Swing, 24" 3 Jaw Chuck, 9.5" Thru Hole, 26" Swing Over Cross Slide, 75 HP, 6 Station Turret, 4 Range Headstock: 25-176, 59-415, 54-376, 127-890 RPM'S, Chip Conveyor

(2) MAZAK QT-20 TURNING CENTERS, S/N 56486, 54741, MAZATROL T-1 CNC Control, 20" Max. Swing, 12" Max. Cutting Dia., 40.75" Max. Length, 3.15" Spl. Bore, A2-8 Spl. Nose, 12-3,000 RPM, 20 HP, Travels: X-7.1", Z-41.4"

MAZAK SLANT TURN 20-ATC M/C CNC LATHE, S/N 93956, MAZATROL T32-3 CNC Control, 8" Chuck, Live Tooling, "C" Axis, Chip Conveyor

(2) MAZAK M5-1500 CNC LATHES, S/N 46142 & 6826, FANUC 6T CNC Control, 18" 3 Jaw Chuck, Chip Conveyor

MAZAK M4 CNC LATHE, S/N 5800, FANUC 6T CNC Control, 15" 3 Jaw Chuck, 25/30 HP, Chip Conveyor

MACHINE ACCESSORIES, EDM'S, GRINDERS

MACHINE ACCESSORIES

ROTO-TECH 36" POWER TILT/ROTARY TABLE, S/N 5731

GIDDINGS & LEWIS 36" x 36" HYDROSTATIC AIRLIFT ROTARY TABLE

GIDDINGS & LEWIS 30" x 30" HYDROSTATIC AIRLIFT ROTARY TABLE

PRATT & WHITNEY PO 1828-9 TILT/ROTARY TABLE

(2) NIKKEN 16" 4TH AXIS ROTARY TABLES, w/Tailstock

MNK TECKNARA 10" 4TH AXIS ROTARY TABLE

(6) TROYKE 4TH AXIS ROTARY TABLES, Various Sizes

MATSUMOJO MD-200RF 8" 4TH AXIS INDEXING TABLE

ANGLE PLATES: (2) 18" x 108"; (2) 22" x 90"; (4) 12" x 72"; (2) 20" x 60"; (2) 12" x 60"; (2) 10" x 60"; (5) 10" x 50"; (4) 12" x 48"; (2) 10" x 48"; (10) 8" x 48"; (6) 7" x 36"; (2) 12" x 28"; (2) 4" x 24"; (2) 24" x 24"

(32) KURT 8" & 6" MACHINIST VISES

ALSO: (1,200) 50 & 40 Taper Tool Holders; 20" x 116" T-Scott Clamping Table; (28) Pair Vee Blocks – Various Sizes; Clamping Hardware; Magnetic Sine Plates; Sine Plates; Magnetic Chucks; Etc.



VIEW OF MACHINE ACCESSORIES



VIEW OF TOOL HOLDERS & CABINETS

EDM'S

(2) 2005 CHAMILLES

ROBOFIL 440CC WIRE

EDM'S, S/N 931357, 913117

(New 2004), Table: 35.43"

x 23.62", Max. Work Piece:

47" x 27" x 15.7", Travels:

X-21.65", Y-13.78", Z-15.7",

UV Travel: 21.65" x 13.77",

Wire Dia: .004"-.012",

Taper Cap: 0-30 Degree

JAPAX SA03-1 WIRE EDM,

S/N 322-00-116, JAPT 3 FM

CNC Control



2004

CHARILLES ROBOFIL 440CC WIRE EDM



2005

CHARILLES ROBOFIL 440CC WIRE EDM



JARBE/DOIMAK RUA 1500 OD/ID GRINDER



KENT 12" X 24" SURFACE GRINDER

GRINDERS, MILLS & DRILLS



100 HP

BLANCHARD 32K-60 ROTARY SURFACE GRINDER

GRINDERS

BLANCHARD 32K-60 ROTARY SURFACE GRINDER, S/N 13078, 100 HP, 60" Electro-Mag Chuck, Incremental Downfeed w/Rapid Travers, In Base Coolant, Sludge Conveyor

JARBE/DOIMAK RUA 1500 HYDRAULIC UNIVERSAL OD/ID GRINDER, S/N 110, OD Cap: 16" x 80", 6" x 20" Max. Wheel, Drop Down ID Spl, Vari-Speed Head Stock, Coolant System w/ ENCYCLON Filter

LANDIS 12" x 48" HYDRAULIC OD GRINDER, S/N 460-29, 2" x 14" Wheel, 12" Dia. Permanent Mag. Chuck, Vari-Speed Head Stock

BRYANT UNIVERSAL INTERNAL GRINDER, S/N Y-14094, Cross Sliding Sign Bar Work Head, 20" Face Plate w/12" Mag. Chuck, 5 HP Grinding Spl., 16" Grinding Stroke, Diamond Wheel Dresser, Coolant System

THOMPSON 14" x 78" HYDRAULIC SURFACE GRINDER, S/N 6C-586057, 14" x 78" Electro-Mag. Chuck, 30 HP Spl., Coolant System

1993 KENT 12" x 24" AUTOMATIC HYDRAULIC SURFACE GRINDER, S/N 98056804, 12" x 24" Electro-Mag. Chuck, Incremental Downfeed w/Rapids, Coolant System

GALLMEYER & LIVINGSTON S-20 6" x 18" HAND FEED SURFACE GRINDER, S/N 9-20315

REID ROLLAWAY 618 SURFACE GRINDER, S/N 20041

(3) HEINMAN FSG-618M HAND FEED SURFACE GRINDERS, S/N A3849005, A3849008, A3849087

MOORE NO. 3 JIG GRINDER, S/N G-291, 40,000 RPM Grinding Spl., 12" x 26" Table, ANILAM 2-Axis DRO

CAPITOL TOOLING INC. 10" x 60" CENTER LAP, S/N NA, Diamond Dresser Attachment

CINCINNATI MONOSET TOOL & CUTTER GRINDER, S/N 31521C5U-33

CINCINNATI NO. 2 TOOL & CUTTER GRINDER, S/N ID2T1W-143

YUASA XG-801 DRILL POINT GRINDER, S/N 5459

(3) STERLING DRILL POINT GRINDERS

ALSO: Grinding Fixtures, Form Grinding Attachments, Grinding Stones, Balancers, Etc.

MILLS & DRILLS

ACER 3VKH 3 HP CNC RAM TYPE TURRET MILL, S/N 9388321, w/Power Draw Bar

(3) BRIDGEPORT SERIES I 2 HP RAM TYPE TURRET MILLS, S/N SE7933, 94364, BR 278201, 2-Axis DRO

(3) FIRST LC-185V3 3 HP RAM TYPE TURRET MILLS, S/N 4111100, 84111097, 84111098, w/2-Axis Power Feed Table, 2-Axis DRO

MILLTRONICS PARTNER 3 HP RAM TYPE TURRET MILL, S/N 1948, w/2-Axis Power Feed Table, 2-Axis DRO

BRIDGEPORT SERIES II 2 HP RAM TYPE TURRET MILL, S/N 160790, w/2-Axis DRO

LAGUN FTV-1 4 HP RAM TYPE TURRET MILL, S/N NA

IKEDA RM1500 RADIAL ARM DRILL, S/N 77057



LANDIS 12" X 48" OD GRINDER



BRYANT UNIVERSAL ID GRINDER



THOMPSON 14" X 78" SURFACE GRINDER

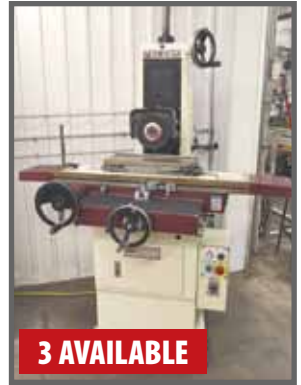


MOORE NO. 3 JIG GRINDER

CLAUSING NO. 2087 VARI-SPEED TABLE TYPE DRILL PRESS

(2) ALLEN VARI-SPEED FLOOR TYPE DRILL PRESSES

WILTON 20" VARI-SPEED FLOOR TYPE DRILL PRESS



3 AVAILABLE

HEINMAN 6" X 18" SURFACE GRINDER



3 HP

ACER 3VKH CNC MILL



3 AVAILABLE

FIRST LC-185V3 MILL



IKEDA RM1500 RADIAL ARM DRILL

View our current auction schedule at www.perfectionindustrial.com

LATHES & SAWS, INSPECTION EQUIPMENT, MISCELLANEOUS MACHINERY



SUMMIT 20" X 80" ENGINE LATHE



HPM 300 TON HYD. PRESS



DEA CMM



DOALL C-260A AUTO HORIZONTAL BANDSAW



DOALL TF-1421H VERTICAL BANDSAW

LATHES & SAWS

SUMMIT 20" x 80" ENGINE LATHE, S/N 4593, 12" 3 Jaw Chuck, 4" Hole Thru Spl., Quick Change Tool Post, Steady Rest, Taper Attachment

OKUMA L-S 22" x 52" ENGINE LATHE, S/N 11256

SOUTH BEND 13" x 48" TOOLROOM LATHE

SOUTH BEND HKX13 16" x 36" TOOLROOM LATHE, S/N 9584

DoALL C-260A AUTOMATIC HORIZONTAL BANDSAW, S/N 459-89404

WF WELLS W-9-1 HORIZONTAL BANDSAW, S/N 4984

DoALL TF-1421H VERTICAL TILT FRAME BANDSAW, S/N 363-81513

GROB 4V-36 VERTICAL BANDSAW, S/N 1306

MILWAUKEE VERTICAL PANEL SAW

EISELLE VMS-11-S MITERING COLD SAW, S/N 2556

FDM CHOP SAW, w/SONY DRO

INSPECTION EQUIPMENT

MITUTOYO BRIGHT 241 CMM, S/N 8201101, 50" x 60" Drilled & Tapped Granite Surface Plate, RENISHAW Probe

BROWN & SHARPE MICROVAL CMM, S/N 012481, 18" x 24" Drilled & Tapped Granite Surface Plate, RENISHAW Probe

DEA IOTA 2203 CMM, S/N NA, 54" x 87" Drilled & Tapped Granite Surface Plate, RENISHAW PH10M Probe

STI 14" OPTICAL COMPARATOR

STARRETT ALTISIMMO 36" DIGITAL HEIGHT GAUGE

ALSO: (8) Granite Surface Plates; Dial Bore Gauges; Micrometer Sets; Height Gauges; Hardness Testers; Pin Gage Sets; Thread Gauges; Verniers; Test Centers



VIEW OF INSPECTION EQUIPMENT



VIEW OF INSPECTION EQUIPMENT

MISCELLANEOUS MACHINERY

HPM 300 TON-CU-2 HYDRAULIC PRESS, S/N 68-91, 72" x 48" Bed, 72" Shut Height

ELECTRO-ARC 28A 10KVA TAP DISINTEGRATOR

SUPERIOR J2 HONING MACHINE

(4) OLSEN 50DBE FLARING MACHINES

PARKER FLARING MACHINE

WHEELABRATOR - HUTSON BURR-BENCH FINISHING MACHINE

DEE-BLAST 36" x 48" SHOT BLAST CABINET

CHICAGO HS414 HYDRAULIC SHEAR, S/N 3284977

DAKE 75H 75 TON HYDRAULIC SHOP PRESS

PARKER HANNIFIN HYDRAULIC CRIMPER

(2) RIDGID 535 POWER THREADERS

H & H TAPPING MACHINE, w/Table

MILLER SYNCROWAVE 350 TIG WELDER

MILLER SYNCROWAVE 250DX TIG WELDER

MILLER DELTAWELD 450 MIG WELDER

HOBART 500 AMP MIG WELDER

LINDE VI-200 MIG WELDER

MILLER GOLDSTAR 400 SS ARC WELDER

MILLER DIALARC HF 250 ARC WELDER

MILLER SPECTRUM 500DC PLASMA CUTTER

HOBART SMOOTHCUT 625 PLASMA CUTTER

EDDYTHERM INDUCTION HEATER

ALSO: Disc Sanders, Belt Sanders, Double End Grinders, Drill Presses, Mag Base Drills, RIDGID & GREENLEE Tooling & Equipment, Chop Saws, Arbor Presses, Etc.

FACTORY EQUIPMENT, MATERIAL HANDLING, ROLLING STOCK, STORES, INVENTORY & CONSUMABLES, COMPUTER EQUIPMENT & OFFICE FURNITURE

FACTORY EQUIPMENT

BINKS 10' x 15' OPEN FACE PAINT BOOTH

(2) KAESER AS30 25 HP ROTARY SCREW AIR COMPRESSORS, S/N 325892, NA

KAESER SK25 20 HP ROTARY SCREW AIR COMPRESSOR, S/N 262037

SULLAIR 10-25 HP TANK MOUNTED AIR COMPRESSOR

KAESER NO 80200 REFRIGERATED AIR DRYER, S/N 023A-1-8603-020

MARKLIFT JR14 ELECTRIC SCISSOR LIFT, S/N 48612662

MEZZANINE 30' x 45', w/Stairs; MEZZANINE 20' x 40', w/Stairs; MEZZANINE 20' x 35', w/Stairs; ALSO HUGE QUANTITY OF Airless Gas-Powered Paint Stripper, Paint Shakers, Portable Fume Exhausts, Dumping Scrap Hoppers, Security Cage, Rolling Shop Carts, Motors, Drives, Scissor Tables, (2) Wheel Dollies, Parts Bins, Strapping Caddies and Tools, Job Boxes, Shop and Step Ladders, Personnel Lockers, Storage Racks, Pneu & Elec. Hose Reels, Conveyors, Shop Fans, Shop Vacs, Janitorial Equip. and Supplies, Large Quantity of Hand Tools, Bolt Cutters, Crimpers, All Sizes of Pipe Wrenches, Hand Files, Electric Drills, Cordless Drills, RIDGID Pipe Benders & Cutters, C Clamps, Pry Bars, BESSEY Clamps, Tool Adapters Sets, GREENLEE Cable Cutters, Vise Grips, Hammers, Screwdrivers, Mitre Saws, ENERPAC Hyd. Jacks, Electric & Pneumatic Grinders, Nibblers, Saws, Sanders, Sledge Hammers, Routers, Cut-Off Saws, Staplers, Nailers, Levels, Pneumatic Hammer & Impact Guns, BUX DH50RP Mag Base Drills, Grinder Wheels, Discs, Brushes, Drills, Reamers, Hole Saws, Toolboxes, Steel Banding & Auto Strapping Tools, Large Assortment of Pipe Bending Dies, Perishable Tooling Including Drills, Reamers, Cutters, Carbide Inserts, Taps, V Flange Tools Holders, Boring Bars

ROLLING STOCK

2008 FORD F-350 SUPER DUTY STAKE TRUCK

HAULMARK TANDEM AXLE ENCLOSED UTILITY TRAILER

STORES, INVENTORY & CONSUMABLES

Large Quantity of Tool & Scrap Steel, Transformers, Motors, Disconnects, Electrical Cable, Cable Track, Connectors, Fuses, Gear Reducers, Drives, Pneumatic Hardware, Hydraulic Fittings & Hose, Stainless Steel Hardware, Bearings, Drill Bits, Taps, End Mills, Ball Mills, Reamers, Carbide Inserts, Gloves, Aprons, Welding Supplies, Etc.



VIEW OF COMPRESSOR ROOM

COMPUTER EQUIPMENT & OFFICE FURNITURE

Excellent Selection of Computers, Printers, Plotters, Office Suites, File Cabinets, Etc.



VIEW OF TRANSFORMERS



HAULMARK T/A UTILITY TRAILER



PROTA-WEIGH
DIGITAL
CRANE SCALE



VIEW OF CABLE



VIEW OF CABLE



VIEW OF LISTA CABINETS



VIEW OF TOOL STEEL



VIEW OF STEEL

MATERIAL HANDLING

2000 HOIST F180 18,000 LB LPG FORKLIFT, S/N 21708, Power Side Shifter, Power Fork Spreader

HYSTER S155XL 15,500 LB LPG FORKLIFT, S/N B024D01967L, Power Side Shifter

CATERPILLAR V50E 5,000 LB LPG FORKLIFT, S/N 3WK01055

CUSTOM 3 Ton Free Standing Crane System; (9) JIB CRANES Up to 1 Ton Cap.; CUSTOM 20 Ton Spreader Bar; PORTA-WEIGH MSI-4300 50,000 Lb Digital Crane Scale, S/N 59919-75282; ALLEGANY GM-60K 60,000 Lb Crane Scale

ALSO: 2, 3 & 4 Part Chain Slings, Wire Slings, Mesh Slings, Lifting Rigs, Machinery Skates, Rigging Hardware, Etc.

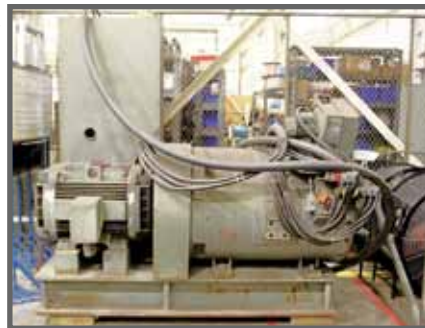


HOIST F180 LPG FORKLIFT



FORD F-350 SUPER DUTY STAKE TRUCK

>
VIEW OF
MOTOR
GENERATOR



Inspection:
Monday, June 3
9:00 AM to 4:00 PM EDT
or by Special Appointment

Online
Bidding
Available
Through
bidpath
com

*This brochure is only a partial listing.
Please visit our website
www.perfectionindustrial.com
for more detailed listings and photos.*

View our current auction schedule at www.perfectionindustrial.com



**PERFECTION
Industrial Sales**

Perfection Industrial Sales – 2550 Arthur Ave., Elk Grove Village, IL 60007
888.241.4577 (U.S. & Canada) – 847.427.3333 (outside U.S. & Canada) – 847.427.8884 (fax)
www.perfectionindustrial.com



Presorted
First Class Mail
U.S. Postage
PAID
Eugene, Oregon
Permit No. 17

**Over 1,800 LOTS FEATURING WELL MAINTAINED LATE MODEL
CNC BORING MILLS, VMC'S, TURNING CENTERS, EDM'S,
GRINDERS, SUPPORT & FACTORY EQUIPMENT**

**LIVE WEBCAST
AUCTION**

Sale Date: Tuesday, June 4, Beginning at 9:00 AM EDT **Inspection:** Monday, June 3, 9:00 AM to 4:00 PM EDT or by Special Appointment

Former Assets of



Hess Industries, Inc.
metallforming process technologies

**A LATE MODEL
CNC MACHINING
FACILITY – OVER
1,800 LOTS OFFERED**



**Over 1,800 LOTS FEATURING WELL MAINTAINED LATE MODEL
CNC BORING MILLS, VMC'S, TURNING CENTERS, EDM'S,
GRINDERS, SUPPORT & FACTORY EQUIPMENT**

**LIVE WEBCAST
AUCTION**



HOTELS

Holiday Inn Express..... (269) 684-0300
1000 Moore Drive, Niles, MI 49120

Hampton Inn..... (574) 277-9373
52709 Indiana State Rt. 933, South Bend, IN 46637

Inn at St. Mary's Hotel & Suites..... (574) 232-4000
53993 Indiana State Rt. 933, South Bend, IN 46637

AIRPORT: South Bend Regional Airport 20 miles south of auction site. Several airlines service the airport.

TERMS OF SALE

Payments by Cash, Cashier Check, Wire Transfer or a Company Check with a letter of guarantee from the issuing bank stating irrevocable payment to GA GLOBAL PARTNERS. Only a 25% deposit due upon bid award. All invoices to be paid within 24 hours.

15% buyer's premium will be added to on-site bidders and 18% buyer's premium to on-line bidders. On-line bidders are required to register as per instructions on the website www.gaauction.com. All goods are sold "As Is, Where Is", ALL SALES ARE FINAL. All subject to prior sale. All Sales in US Funds. Complete terms and conditions including removal procedures, are available on our website, will be posted at the auction and will be provided at the time of registration.

REMOVAL TIMES

All small items must be removed by Tuesday, June 11, 2013. All other items must be removed by Friday, June 21, 2013. Hours: Monday – Friday between 8 am – 4 pm. Extended hours and weekends by appointment. No items may be removed during auction. NO EXCEPTIONS.

This brochure is meant merely as a guide. Perfection Industrial Sales, GA Global Partners and Ettin Group make no guarantee, expressed or implied, as to the accuracy of the information in this brochure. Buyers should inspect the goods beforehand to satisfy themselves.

FURTHER INFORMATION

For further information on machinery and equipment, please contact John Bopp at (708) 606-3240 or Email john@perfectionindustrial.com
For further information regarding auction accounting and a full listing of terms go to www.gaauction.com or contact Erika Dizon @ (818) 884-3737, Ext. 1348, or edizon@greatamerican.com

Sale Date: Tuesday, June 4, Beginning at 9:00 AM EDT
Location: 30257 Redfield Street, Niles, Michigan 49120
Inspection: Monday, June 3, 9:00 AM to 4:00 PM EDT or by Special Appointment

Online
Bidding
Available
Through **bidpath.com**



**PERFECTION
Industrial Sales**

Perfection Industrial Sales
ph 847-427-3333 • fax 847-427-8884
www.perfectionindustrial.com

Sale is Being Held in Conjunction With:



GLOBAL PARTNERS

www.gaauction.com

EttinGroup



www.ettingroup.com