

2 AUCTIONS

**LIVE WEBCAST
& ONLINE**

LIVE WEBCAST AUCTION

AUCTION

1

Major Assets Surplus of

COMMScope®

Due to Complete Facility Closure

Sale Date:

Thursday, October 30, 2014 at 10:00 AM CT

Location:

2700 Ellis Road, Joliet, Illinois (Also Includes Assets from Statesville, NC)

Inspection:

Wednesday, October 29, 2014 from 8:00 AM to 4:00 PM CT

ONLINE AUCTION

AUCTION

2

Support Assets Surplus to

COMMScope®

Sale Closes From:

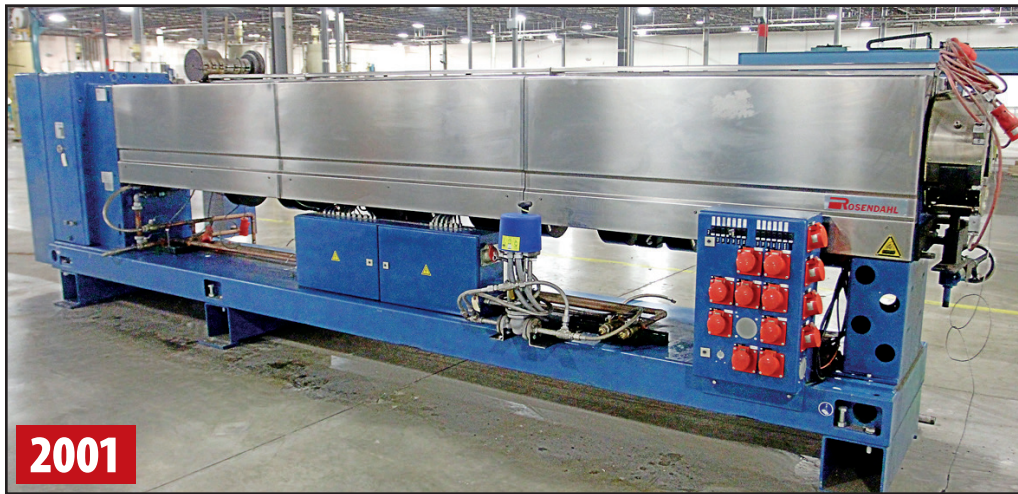
Tuesday, November 4, 2014 1:00 PM ET

Location:

125 Commscope Way, Statesville, North Carolina 28625

Inspection:

Monday, November 3, 2014 from 8:00 AM to 4:00 PM ET



2001

ROSENDAHL RE1-150-30 EXTRUDER

**FEATURING
ROD BREAKDOWN MILL,
TWISTER, EXTRUDERS,
CROSSHEADS, PAYOFFS,
TAKE-UPS,
PLASTICS EQUIPMENT,
MATERIAL HANDLING
& PLANT SUPPORT**



HALL 108" GANTRY PAYOFF

Online Bidding Available Through **BidSpotter.com**



1999

EURODRAW ROD BREAKDOWN MILL



**PERFECTION
Industrial Sales**

Perfection Industrial Sales

ph 847-427-3333 • fax 847-427-8884

www.perfectionindustrial.com

BREAKDOWN MILL, WIRE DRAWING, TWISTER, (23) EXTRUDERS, (9) CROSSHEADS

LIVE WEBCAST AUCTION

AUCTION

1

Major Assets Surplus of

COMMSCOPE®

Due to Complete Facility Closure

Sale Date: Thursday, October 30, 2014 at 10:00 AM CT

Location: 2700 Ellis Road, Joliet, Illinois (Also Includes Assets from Statesville, NC)

Inspection: Wednesday, October 29, 2014 from 8:00 AM to 4:00 PM CT



EURODRAW STEM PACKERS



NORTHAMPTON B560E R/L TWISTER



DAVIS STANDARD 4.5" 24:1 EXTRUDER



RMG 36" WIRE DRAWER

BREAKDOWN MILL, WIRE DRAWING, TWISTER

1999 EURODRAW SA.450.14.2 2-WIRE ALUMINUM LIMITED SLIP ROD BREAKDOWN LINE, S/N C135, w/(13) 18" Draw Capstans, 3/8" to 14 Gauge Cap., Rod Payoff, WS450D, Wire Straightener. **Note:** Located Statesville.

(3) RMG 89-10220-68 36" WIRE DRAWERS, w/36" Dia. x 8" Flat Face Capstan, S/N 95113704, 97014065, 97014096.

RMG 89-25109-70 36" WIRE DRAWER, S/N 89082312, w/36" Dia. x 8" Flat Face Capstan.

1998 NORTHAMPTON B560E R/L TWISTER, S/N 2148-01-02, **Note:** Located Statesville.

(23) EXTRUDERS, (9) CROSSHEADS

DAVIS STANDARD 600-S 6" 24:1 EXTRUDER, S.O. 35404-C, #E2659, w/17.18:1 Gearbox Ratio, Clamp.

(2) DAVIS STANDARD 45IN45 4.5" 24:1 EXTRUDERS, S/N U2105, U2097, w/300 HP DC Motor.

2005 AMERICAN KUHNE AK 450 A/C 4.5" 24:1 EXTRUDER, S/N 4535, 250 HP DC Motor, Clamp, Crosshead, **Note:** No Screw.

2000 AMERICAN KUHNE AK 450 A/C 4.5" 30:1 EXTRUDER, S/N 1591.

MERRITT A/C 4.5" 24:1 EXTRUDER, **Note:** Located Statesville.

MERRITT DAVIS 2.5" 24:1 EXTRUDER, S/N WC-02509-01, 14.5:1 Gearbox, Clamp, 40 HP DC Motor, **Note:** No Screw, Located Statesville.

2000 AMERICAN KUHNE AK 200 A/C 2" 24:1 EXTRUDER, S/N 2582, w/Clamp, 25 HP DC Motor.

2000 DAVIS STANDARD/KILLION KN150 1.5" 24:1 EXTRUDER, S/N Z4391, w/Crosshead, 11.2:1 Gearbox Ratio, 15 HP DC Motor.

2002 AMERICAN KUHNE AK 150 A/C 1.5" 24:1 VERTICAL EXTRUDER, S/N 3048, **Note:** Located Statesville.

(2) 2000 AMERICAN KUHNE AK 150 A/C 1.5" 24:1 EXTRUDERS, S/N 2105, 2108.

MERRITT A/C 1.5" 24:1 EXTRUDER, S/N 02524-01.

2000 DAVIS STANDARD/KILLION 1" 24:1 EXTRUDER, S/N 21464.

KILLION 1" 24:1 EXTRUDER, w/Crosshead.

2000 AMERICAN KUHNE AK 100 A/C 1" 24:1 EXTRUDER, S/N 1912, w/Crosshead, **Note:** Located Statesville.

DAVIS STANDARD 35IN35 3.5" 36:1 FOAM EXTRUDER, S/N P3708, w/Crosshead, 75 HP DC Motor, **Note:** Located Statesville.

2001 ROSENDAHL RE1-150-30 150MM 30:1 FOAM CASCADE EXTRUDER, S/N RAM01733, w/272 kW DC Motor.

2001 ROSENDAHL RE1-120-30 120MM 30:1 FOAM CASCADE EXTRUDER, S/N RAM01730, w/170 kW DC Motor.

(2) LMP RC19E (TS) 90/100MM TWIN SCREW FOAM EXTRUDERS, S/N 8906/159, NA.

LMP RC19/18 90/100MM TWIN SCREW FOAM EXTRUDER, S/N 7317.

(8) DAVIS STANDARD EXTRUDER CROSSHEADS, Various Models, On Stands.

GENCA XT33386 EXTRUDER CROSSHEADS, On Stand.



DAVIS STANDARD 6" 24:1 EXTRUDER

To discuss your requirements for an auction, please call Perfection Industrial **847.427.3333**

(23) EXTRUDERS, (9) CROSSHEADS , (15) CATERPULLERS, (4) ACCUMULATORS



AMERICAN KUHNE 4.5" 24:1 EXTRUDER

2005



MERRITT DAVIS 2.5" 24:1 EXTRUDER



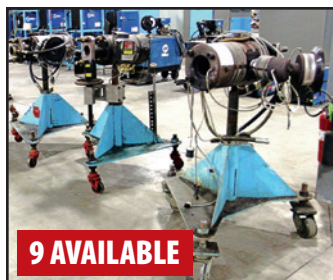
2 AVAILABLE

2000 AMERICAN KUHNE 1.5" 24:1 EXTRUDER



ROSENDAHL RE1-120-30 EXTRUDER

2001



9 AVAILABLE

PARTIAL VIEW OF CROSSHEADS

(15) CATERPULLERS, (4) ACCUMULATORS

2000 MGS 72" LC72DW CATERPULLER CAPSTAN, S/N 180RH.

DAVIS STANDARD 72SPCL45/ADJ 72" CATERPULLER CAPSTAN, S/N L2836, S.O. #03609.

NEXTROM BCA1800 72" CATERPULLER CAPSTAN, S/N NA.

(4) FRANCIS SHAW 72" CATERPULLER CAPSTANS.

(4) AWM 72" CATERPULLER CAPSTANS.

(3) AWM 48" CATERPULLER CAPSTANS.

HALL 24" CATERPULLER CAPSTAN, S/N 1612.

HALL 15' VERTICAL ACCUMULATOR, w/L-R, 26" UHMW Dia. Sheaves, 125' Accumulation, S/N 3860.

ANDREW ROTARY STRIP ACCUMULATOR.

THERMATOOL ROTARY STRIP ACCUMULATOR.

THERMATOOL 10.05A0010450A ROTARY STRIP ACCUMULATOR, S/N ACCU.



4 AVAILABLE

THERMATOOL ROTARY STRIP ACCUMULATOR



NEXTROM 72" CATERPULLER CAPSTAN

FURTHER INFORMATION

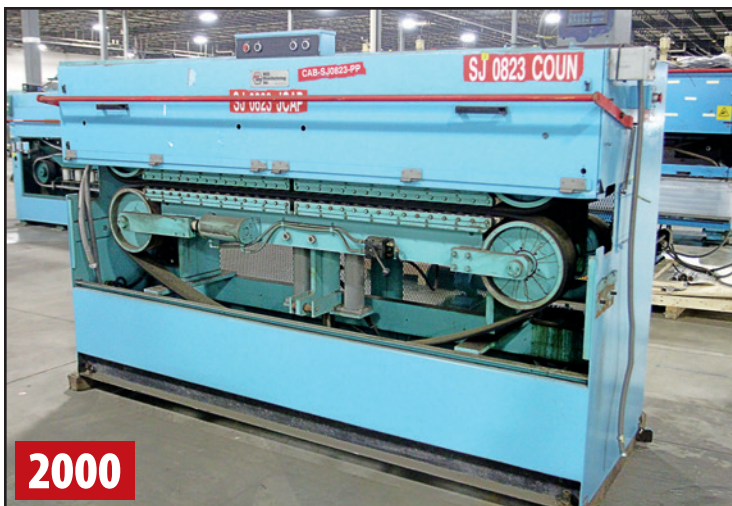
For further information on machinery and equipment, please contact John Bopp at (708) 606-3240 or via email at john@perfectionindustrial.com

Online Bidding Available Through

BidSpotter.com



ROSENDAHL 72" CATERPULLER CAPSTAN



2000

MGS 72" CATERPULLER CAPSTAN

To discuss your requirements for an auction, please call
Perfection Industrial **847.427.3333**

(15) PAYOFFS, (23) TAKE-UPS, (1) SPOOLER, MISCELLANEOUS WIRE & CABLE MACHINERY



MGS HALL PAYOFF



38 AVAILABLE

PARTIAL VIEW OF PAYOFFS AND TAKE-UPS



2 AVAILABLE

QUEINS 108" PORTAL TAKE-UP



< HALL 50" SHAFTLESS TAKE-UPS

To discuss your requirements for an auction, please call Perfection Industrial 847.427.3333

FURTHER INFORMATION

For further information on machinery and equipment, please contact John Bopp at (708) 606-3240 or via email at john@perfectionindustrial.com

(15) PAYOFFS

(3) HALL 108" GANTRY PAYOFFS, S/N 1850, 1073, NA.

(2) CABLETRADE 108" GANTRY PAYOFFS, S/N 9506-01, 9636-01, New as 2005.

CABLETRADE 108" GANTRY PAYOFF, S/N 9508-01, **Note:** Located Statesville.

(2) REEL-O-MATIC SP-WT10 96" WALK THROUGH SHAFTLESS PAYOFFS, S/N 2-3080-H06, 1-602-205, w/10,000 Lb Cap.

2011 TULSA FMP-5 72" SHAFTLESS PAYOFF, S/N 31596, w/5,000 Lb Cap.

2000 TULSA PSP010 96" SHAFTLESS PAYOFF, S/N 4396-4, w/10,000 Lb Cap., **Note:** Located Statesville

TULSA FSP010 96" SHAFTLESS PAYOFF, S/N NA, w/10,000 Lb Cap., **Note:** Located Statesville.

(4) QUEINS 96" SHAFTLESS PAYOFF, Various Models, New as 2001.

(23) TAKE-UPS, (1) SPOOLER

(5) HALL 108" GANTRY TAKE-UPS, S/N 1614, 1895, 1898, 4090, NA.

CABLETRADE 108" PORTAL TAKE-UP, S/N 9503-10, **Note:** Located Statesville.

2001 QUEINS A2953/2001 108" PORTAL TAKE-UP, S/N 41-7210.

2001 QUEINS 41-7210 108" PORTAL TAKE-UP, S/N A-2952/2001, **Note:** Located Statesville.

REEL-O-MATIC SP-WT10 96" WALK THROUGH SHAFTLESS TAKE-UP, S/N 1-592-ME, w/10,000 Lb Cap.

(2) HALL 96" GANTRY TAKE-UPS, S/N 1141, 1855.

QUEINS 96" PORTAL TAKE-UP (IN CRATE).

QUEINS A-2091-95 96" TRAVERSING TAKE-UP, S/N 41-6344.

(4) QUEINS 96" SHAFTLESS TAKE-UPS, Various Models.

REEL-O-MATIC SP-WT2 60" WALK THROUGH SHAFTLESS TAKE-UP, S/N 1-591-ME, w/2,000 Lb Cap.

(2) HALL 50" SHAFTLESS TAKE-UPS, S/N 2913, 1736, 1 w/EURO THERM Drive, **Note:** Located Statesville.

(3) DYNAMEX TPD-30-2AX TAPE FOIL PAYOFF, S/N 1464J547, 1459J546, 1457J544, w/30" Pad, 1.5 HP Motors, **Note:** Located Statesville.

CLIPPER PA30-1-3339-70214 30" PARALLEL AXIS DUAL REEL SPOOLER, S/N NA, w/Dancer, **Note:** Located Statesville.



CLIPPER 30" DUAL REEL SPOOLER



< HALL 48" POWER PAYOFF



> REEL-O-MATIC

MISCELLANEOUS WIRE & CABLE MACHINERY

SWEED 515AE CHOPPERS, S/N 13185, 13186, 14695, 15238, 19147, w/5 HP Motors.

(13) HALL TENSION DANCERS.

(3) CABLETRADE TENSION DANCERS.

(2) THERMATOOL CF18-1006460 SOLID STATE HF INDUCTION WELDERS, w/800 kHz.

THERMATOOL TUBE TYPE HF INDUCTION WELDER.

(2) COLT CRD-50-12 60" DOUBLE SIDED TAPE PAYOFFS, S/N 1201812, NA, w/5,000 Lb Cap.

LITTELL 60-12 72" DOUBLE SIDED TAPE PAYOFF, S/N 94303.00, w/6,000 Lb Cap.

LITTELL 40-12 48" SINGLE SIDE TAPE PAYOFF, S/N 91341.94, w/4,000 Lb Cap.

(2) SHUSTER METTLER DUAL PLANE WIRE STRAIGHTENERS.

(5) IMAJE JAIME 1000 S8 INK JET PRINTERS.

(2) IMAJE JAIME 1000 S4 PLUS INK JET PRINTERS.

(3) IMAJE JAIME 1000 S4SI PLUS INK JET PRINTERS.

(3) KELSEY HAYES KIH KOLD WELDERS.

2008 ZUMBACH METREX A100 DIA. GAUGE, S/N 2808.3899.10.1.

2008 ZUMBACH ODAC 110XY-EN DIA. GAUGE.

ZUMBACH ODAC 76XY DIA. GAUGE.

(9) CLINTON SPARK TESTERS, Various Models.

ALSO: STAINLESS STEEL WATER TROUGHS, w/64 sections @ 10' section, 8" round bottom, (6) Plate Heat Exchangers w/Pumps.



5 AVAILABLE

SWEED 515AE CHOPPERS



9 AVAILABLE

> CLINTON SPARK TESTERS

PLASTIC & MIXING, FORKLIFTS & MATERIAL HANDLING, FACTORY SUPPORT EQUIPMENT



3 AVAILABLE

RAYMOND 3,000 LB SWING REACH FORKLIFTS



5 AVAILABLE

VIEW OF ORDER PICKERS



OTTAWA NO 30 SPOTTER TRUCKS



7 AVAILABLE

VIEW OF HEAVY LIFT FORKLIFTS



45 AVAILABLE

VIEW OF LISTA CABINETS



37 AVAILABLE

VIEW FLAMMABLE LIQUID STORAGE CABINETS



VIEW OF TOOL CHESTS



2005

SULLAIR 300 HP AIR COMPRESSOR



INGERSOLL RAND 300 HP AIR COMPRESSOR

FORKLIFTS & MATERIAL HANDLING

2002 HYSTER H190HD 19,000 LB DIESEL FORKLIFT, S/N F00E18302.

2002 HYSTER H190XL 19,000 LB DIESEL FORKLIFT, S/N E007002112R.

TAYLOR THD160 16,000 LB DIESEL FORKLIFT, S/N S-C826821.

2000 CATERPILLAR DP70 15,500 LB DIESEL FORKLIFT, S/N T20C-60320.

HYSTER H135XL 13,500 LB DIESEL FORKLIFT, S/N F006D01909R.

2001 CATERPILLAR DP70 12,000 LB DIESEL FORKLIFT, S/N T20C-60887.

2000 CATERPILLAR DP50 10,000 LB DIESEL FORKLIFT, S/N 6CM10888.

CATERPILLAR T60B 6,000 LB LPG FORKLIFT, S/N 65U468.

(2) CATERPILLAR T50E 5,000 LB LPG FORKLIFTS, S/N 2ND01288, 2ND00754.

CATERPILLAR GCP-25-LP-HD 5,000 LB LPG FORKLIFT, S/N 4EM91586.

PLASTIC & MIXING

(3) IMPERIAL INDUSTRIAL 45.40.14-0X30-0 COMPOUND SILOS, w/136,000 Lb Cap.

NATIONAL BULK EQUIPMENT BOLTED COMPOUND SILO.

(3) VISHAY COMPOUND SILO, w/Load Cell Weighing.

(3) FRANKLIN 1000 LB SURGE BINS.

(5) PREMIER SURGE BINS, (3) 2,500 Lb, (2) 5,000 Lb.

(3) PREMIER 5 HP VACUUM BLOWERS, w/Sound Enclosures.

(5) PREMIER 15 HP VACUUM BLOWERS, w/Sound Enclosures.

(2) KTRON BLENDERS.

(2) 2006 PREMIER PHH400DRYERS, S/N 5741-77, NA.

2008 PREMIER GUARDIAN WXC050ADY44U BLENDER, S/N 70153001.

(2) PREMIER 2400 PLC 48 RCVR CONTROLS, S/N 5741-77, NA.

(2) 2006 PREMIER PHH1000 HOPPER DRYERS.

(2) CONAIR HOPPER DRYERS.

(2) DRI-AIR RH600 HOPPER DRYERS.

YALE GLC050RGBUAQ084 5,000 LB LPG FORKLIFT, S/N E187V13007X.

2004 CATERPILLAR GC30K 4,300 LB LPG FORKLIFT, S/N AT83D00710.

2004 TOYOTA 40-3FGC15 3,300 LB LPG FORKLIFT, S/N 12417.

(3) RAYMOND 537-CRS30T 3,000 LB ELECTRIC SWING REACH FORKLIFTS, S/N 537-97-02728, 537-93-00822, 537-93-00619.

(2) 2001 RAYMOND EAS1-OPC-30TT ORDER PICKERS, S/N EAS1-01-AE29413, NA.

(3) CROWN ELECTRIC REACH TRUCKS.

GROVE TOUCAN VM3248E MAN LIFT.

SIMON L-2034E MAN LIFT.

(2) OTTAWA NO 30 SPOTTER TRUCKS, S/N 1309, 65077.

(5) GORBEL GANTRY HOISTS, (4) 2 Ton, (1) 1/4 Ton.

(8) HANDLING SYSTEMS JIB HOISTS, 1/4-Ton to 1 1/2-Ton Cap.

(17) CM ELECTRIC CHAIN HOISTS, Up to 3 Ton Cap.

FACTORY SUPPORT EQUIPMENT

INGERSOLL RAND SSR-XFE300-2S 300 HP AIR COMPRESSOR, Rated 1,685 CFM @100 PSI, S/N EE1239U95311.

2005 SULLAIR T32-300L/A/SUL 300 HP AIR COMPRESSOR, S/N 003126747.

SULLAIR 25B-150-ACAC 150 HP AIR COMPRESSOR.

(3) TENNANT NO 95 FLOOR SCRUBBERS.

GRIEVE HB-1250 OVEN, S/N 520058, w/1,200 Deg. F, 175,000BTU.

(16) HOBART, MILLER, POWERCON WELDERS.

ALSO: LISTA MULTI-DRAWER CABINETS; CRAFTSMAN AIR COMPRESSOR; ARMSTRONG-BLUM, CRAFTSMAN, DAYTON, KALAMAZOO, PARMA, POWERMATIC, ROCKWELL BAND SAWS; CONCRETE FLOOR GRINDER; CRAFTSMAN, RIDGID, JOHANSSON DRILL PRESSES; AIR SYSTEMS INT'L PFE-7H FUME EXTRACTOR; GRINDERS; EONOLINE SAND BLASTER; INTERSTATE MACHINERY PRESS BRAKE; TENNANT SHEAR; JET JTM-4VS MILLING MACHINE; DEWALT MITER SAW; SCHERR TUMICO 20-3500 OPTICAL COMPARATOR; STORAGE CABINETS; DAYTON PORTABLE HEATER, 175,000 BTU; ENERPAC 50-TON HYDRAULIC PRESS; DELTA 33-082 RADIAL ARM SAW; ROLL TOOL BOXES; GAYLORD TILTERS; WALKIE STACKERS; LIFT TABLES; FLOOR SCALES W/DISPLAYS; DRUM DOLLEYS; FLAMMABLE STORAGE CABINETS; PALLET JACKS; ANDREW TAPE TIG BUTT WELDERS.



VIEW OF ASSORTED PLASTIC EQUIPMENT

ONLINE AUCTION

AUCTION

2

Support Assets Surplus to

COMMSCOPE®

Sale Closes From: Tuesday, November 4, 2014 1:00 PM ET

Location: 125 Commscope Way, Statesville, North Carolina 28625

Inspection: Monday, November 3, 2014 from 8:00 AM to 4:00 PM ET



3 AVAILABLE

MERRITT DAVIS ELECTRIC 48" BELT WRAP CAPSTANS



TAYMER 60" PAYOFF AND TAKE-UP

MISCELLANEOUS WIRE & CABLE MACHINERY

RMG 89-10220-68 36" WIRE DRAWER S/N 90012379, w/36" Dia x 8" Flat Face Capstan.

2007 LEICHT WIG.130.10.4.75.D.Z. BUTT WELDER, S/N 873.

MICRO GS BUTT WELDER, S/N 35103, w/.035-.225 ST.

MICRO JSADU BUTT WELDER, S/N 15138, w/.072'-.187" AL/CU Alloys.

(3) BETA MCS-8 PREHEATERS, S/N 40100, 40523, 40369, w/C540 Power Controller.

BETA MCS-280 PREHEATER, S/N 40789, w/C580 Power Controller.

2005 FINE IP350-380-20 PREHEATER, S/N FS1219.

2001 AJAX 50/10 PACHYDYNE PREHEATERS, S/N H-2R700-B.

RAYDYNE VERAPOWER 25 INDUCTION PREHEATER, S/N LB218748.

SWEED 510-AC-3 CHOPPER, S/N 91-2285.

THERMATOOL CFI WELDER CS0002550 HF SOLID STATE INDUCTION WELDER.

THERMATOOL HF INDUCTION WELDER.

ALSO: INSTRON 5565 TENSILE TESTER; ZUMBACH METREX A100 DIA. GAUGE; (2) TECHMET 136-235 LASERMIKE DIA. GAUGES, S/N 95-2965, 95-2968; AFA PHTG-30 GREASE APPLICATOR, S/N 12367; BEKAERT NO. 132 14-GROOVE APD POINTER; KROLLMAN DWEG-0-01V/S/F 17 GROOVE POINTER, S/N 99-11866; REGAL 1000RRP12 1,000 LB SCRAP COILER, S/N 08025-625; HALL 4F15 DANCER, S/N 2109; (2) NEXTROM AIR WIPES, Mdl. PDB50-615, PDB50-611, S/N Y0G0401422, 99G0505121; 2000 TULSA 1740TU COUNTER, S/N 4082-3; (4) DOMINO A200 INK JET PRINTERS; IMAJE JAIME 1000-S8 INK JET PRINTER.

CATERPULLERS, CAPSTANS, ACCUMULATORS

AMW 72" CATERPULLER CAPSTAN, w/3.5" Wide Belt, SIEMENS 5 HP Motor.

(3) DAVIS ELECTRIC 52 CAT TRAK 52" CATERPULLER CAPSTANS, S/N 001-937, 001-934, 001-934.
NOTE: (2) w/o Motors.

(3) MERRITT DAVIS ELECTRIC 48" BELT WRAP CAPSTANS, S/N 03085-08, 03085-07, 0-001-957.

(2) AMW 48" CATERPULLER CAPSTANS

MERRITT DAVIS ELECTRIC 18" CATERPULLER CAPSTAN, w/Slide Base.

(3) CABLETRADE 12" CATERPULLER CAPSTANS, S/N 9634-25, 9707.

ANDREW ROTARY STRIP ACCUMULATOR.



2 AVAILABLE

COLT CRD-50-12
5,000 LB TAPE PAYOFF

PAYOFFS, TAKE-UPS

(4) GBC MPH-01/02/03/04 800MM 4-POSITION PAYOFFS, w/5.5 kW Motors, DH4-1 Drive Cabinet.

TAYMER 60" PAYOFF.

WYREPAK 12-POSITION PAYOFF.

(2) COLT CRD-50-12 5,000 LB TAPE PAYOFFS, S/N 1201811, 1201777.

LITTELL 40-24 48" 4,000 LB TAPE PAYOFF, S/N 92079-95-4.

(4) LITTELL 40-12 48" 4,000 LB TAPE PAYOFF, S/N 92094-90, 91341-94, 91537-94-2, NA.

PA INDUSTRIES DSRA1200D TAPE PAYOFF, S/N XPM66.712-01.

PA INDUSTRIES DSRA1500SP TAPE PAYOFF, S/N X17526-03/78527.

TAYMER 60" TAKE-UP

NOKIA/MAILLEFER FIBER OPTIC TAKE-UP, #4890088A.

(3) TULSA FSPO-10, SPO-15 PAYOFFS, 96" Reel Capacity.

PLASTICS & MIXING

COLORTRONIC 4-COLOR WEIGH SCALE BLENDER; 2000 KTRON KG2 3-COLOR WEIGH SCALE BLENDER.

(3) PREMIER 15 HP BLOWER; PREMIER 5HP BLOWER; PREMIER DBD200 DRYER; (2) PREMIER DBD150 DRYERS; WHITLOCK DB200RT DESICCANT DRYER, S/N 8630607; WHITLOCK WD150 DESICCANT DRYER, S/N 30L0394; (9) PREMIER HOPPER LOADERS; (5) PLAST-EQUIP HHL-15 HOPPER LOADERS; ENSIGN GAYLORD TILTER, Mdl. 2410876, #8170

FURTHER INFORMATION

For further information on machinery and equipment, please contact John Bopp at (708) 606-3240 or via email at john@perfectionindustrial.com

Online Bidding Available Through

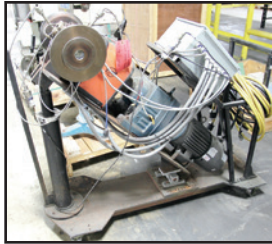
BidSpotter.com

To discuss your requirements for an auction, please call Perfection Industrial **847.427.3333**

MISCELLANEOUS WIRE & CABLE MACHINERY, FACTORY SUPPORT EQUIPMENT



ZUMBACH METREX
A100 DIA. GAUGE



MELT PUMP

Online Bidding Available Through

BidSpotter.com



STERLCO CHILLERS

5 AVAILABLE



5 AVAILABLE

THERMATOOL INDUCTION WELDERS



VIEW OF ASSORTED WELDERS



INSTRON 5565 TENSILE TESTER



VIEW OF ASSORTED WELDERS



THERMATOOL CFI WELDER CS0002550
HF SOLID STATE INDUCTION WELDER

FACTORY SUPPORT EQUIPMENT

GARDNER DENVER WBQQNE 125 HP AIR COMPRESSOR, S/N U97604.

(2) GARDNER DENVER ELECTRA-SAVER II 75 HP AIR COMPRESSORS.

(2) YORK 160T CHILLERS, S/N RGRM015391, RDNM008139.

PACE 150T CHILLER.

MARLEY NCB231GS 975T COOLING TOWER, S/N 146965-001-99.

(2) MARLEY NC6222GS 709.5T COOLING TOWERS, S/N 146966-002-99, 146965-001-99.

MARLEY 8907 250-TON COOLING TOWER, S/N 7-534-85.

MARLEY NC3221GS 300-TON COOLING TOWER, S/N 150036-001-99.

MARLEY 221-121 250-TON COOLING TOWER, S/N 2-326-88.

2008 EURO ABFPH0200 28KW AIR CHILLER.

ALSO: 2007 ENERSYS E-BBL-SG-36-480V 10,000 LB BATTERY CHANGING STATION, S/N CFC0014; (2) DYNISCO C56640 MELT PUMP, w/Flanges and Drive; (2) GRACO C56640 DRUM MELTERS/METERING PUMPS; NORDSON 5510 DRUM MELTERS/METERING PUMPS, S/N G2H01344; (2) GRACO C56640 DRUM MELTERS/METERING PUMPS; 2002 JULIUS QUATTRO 150 EDGE TRIM/SCARFING UNIT; GENERAL SCALE FLOOR SCALE, 5,000 Lb, 32" x 48" platform; (4) RAYPAK NO. 133 GAS WATER HEATERS; HONDA CWC-5004-OMGH 20 HP PRESSURE WASHER; NORTHSTAR 4000IPW 4,000 PSI 20 HP PRESSURE WASHER; POWERMATIC BAND SAW; RAHN 4'X6' GRANITE INSPECTION TABLE; ECONOLINE PARTS CLEANER/SAND BLASTER; (2) MILLER AEROWAVE CC AC/DC HYBRID ARC WELDER; MILLER DYNASTY 700 AC/DC WELDER; POWERMASTER WC100B WELDER; POWERMASTER 500 WELDER; RACKING, Apart, (10)

Uprights w/Horizontals.



ENERSYS 10,000 LB BATTERY CHANGING STATION

2007

To discuss your requirements for an auction, please call Perfection Industrial **847.427.3333**



**PERFECTION
Industrial Sales**

Perfection Industrial Sales

ph 847-427-3333 • fax 847-427-8884

www.perfectionindustrial.com



PERFECTION Industrial Sales

Perfection Industrial Sales – 2550 Arthur Ave., Elk Grove Village, IL 60007
888.241.4577 (U.S. & Canada) – 847.427.3333 (outside U.S. & Canada) – 847.427.8884 (fax)
www.perfectionindustrial.com

Perfection Industrial Sales – IL Auction Licenses #444.000438 & #441.001779 NC Auction Licenses #9693 & #9697

2 AUCTIONS

LIVE WEBCAST & ONLINE

COMMScope®

LIVE WEBCAST AUCTION

Major Assets Surplus – Due to Complete Facility Closure

AUCTION
1

Sale Date: Thursday, October 30, 2014
at 10:00 AM CT

Location: 2700 Ellis Road, Joliet, Illinois
(Also Includes Assets from Statesville, NC)

Inspection: Wed., October 29, 2014 from 8:00 AM to 4:00 PM C

ONLINE AUCTION – Support Assets Surplus

AUCTION
2

Sale Closes From: Tuesday, November 4, 2014
at 1:00 PM ET

Location: 125 Commscope Way,
Statesville, North Carolina 28625

Inspection: Mon., November 3, 2014 from 8:00 AM to 4:00 PM ET

AUCTION 1

SALE DATE: Thursday, October 30, 2014
at 10:00 AM CT

LOCATION: 2700 Ellis Road, Joliet, Illinois
(Also Includes Assets from Statesville, NC)

INSPECTION: Wednesday, October 29, 2014 from 8:00 AM
to 4:00 PM

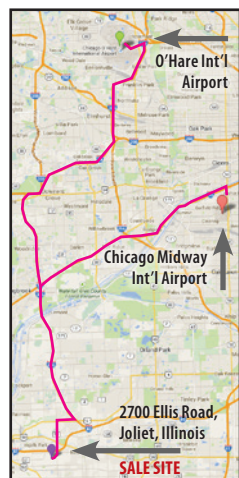
HOTELS

Hampton Inn Joliet – I-80 (815) 725-2424
1521 Riverboat Center Drive, Joliet, IL 60436
Fairfield Inn Joliet South (815) 741-3499
1501 Riverboat Center Drive, Joliet, IL 60436
Harrah's Joliet Casino & Hotel (815) 740-7800
151 N Joliet Street, Joliet, IL 60432

AIRPORTS

O'Hare International Airport is approximately 1 hour and
15 minutes from Joliet auction site.

Chicago Midway International Airport is approximately 55
minutes from Joliet auction site.



DIRECTIONS

From O'Hare Int'l Airport: Head SW on I-190 W. Take the Bessie Coleman Dr. exit and turn right onto Bessie Coleman Dr. Take I-90 ramp to I-90/I-294/Chicago. Merge onto I-190 E. Take exit 1D toward I-294 S/Indiana/S Tollway. Merge onto I-294 S. Take the I-88 West E-W Tollway. Merge onto I-88 W. Take the exit onto I-355 S toward Joliet. Keep left onto I-355 S/Veterans Memorial Tollway S. Take the U.S. 6/SW Hwy. exit. Right onto US-6 W/Maple Rd. Left onto Gougar Rd. Turn right onto Ellis Rd.

From Chicago Midway Int'l Airport: Head north on IL-50 N/S Cicero Ave. Turn left onto I-55 S. Take exit 269 I-355 Tollway N/I-355 Tollway S toward NW Suburbs/SW Suburbs. Keep left and follow signs for I-355 S/SW Suburbs. Merge onto I-355 S. Veterans Memorial Tollway S. Take the U.S. 6/SW Hwy. exit. Turn right onto US-6 W/Maple Rd. Turn left onto Gougar Rd. Turn right onto Ellis Rd.

TERMS OF SALE

An 18% buyer's premium will be charged on all assets purchased by buyers attending the sale in person. Any Webcast or Online Buyers will be charged 21%. The buyer's premium will be reduced to 15% (bidders attending the Auction in person) or 18% (Webcast or Online bidders) for payments made by means of cash, cashier's check, company check (with bank letter of guarantee) or wire transfer within 48 hours of sale close. Everything will be sold to the highest bidder for cash, in accordance with the Auctioneer's customary "Terms of Sale", copies of which will be posted on the premises of the sale and subject to additional terms announced the day of sale. All items are sold "As is, Where is" without any warranties expressed or implied. Although obtained from sources deemed reliable, the Auctioneer makes no warranty or guarantee to the accuracy of the information contained in this brochure and online. All buyers should inspect the goods beforehand to satisfy themselves. **PAYMENT:** ALL PURCHASES MUST BE PAID IN FULL ON THE DAY OF THE AUCTION. If you intend to pay by wire transfer, we will accept payment the day after the sale ONLY IF a deposit of 25% of the total purchases is made on the day of the sale. Contact our office for wire instructions. Only cash, wire transfer or certified check, payable to Perfection Industrial Sales will be accepted. Company checks payable to Perfection Industrial Sales will be accepted only if accompanied by a bank letter of guarantee, (see sample letter below). All sales are subject to sales tax. Purchasers claiming exemptions from taxes must provide proof satisfactory to the Auctioneer of their entitlement to claim such exemptions. **Auction Conducted in U.S. Funds.**

FURTHER INFORMATION

For further information on machinery and equipment, please contact John Bopp at (708) 606-3240 or via email at john@perfectionindustrial.com

REMOVAL TIMES

All items must be removed from auction site no later than Friday, November 14th. Removal times are 8:00 AM to 4:00 PM Monday through Friday. No items may be removed during auction. NO EXCEPTIONS.

This brochure is meant merely as a guide. Perfection Industrial Sales, Commission Brokers and The Brandford Group make no guarantee, expressed or implied, as to the accuracy of the information in this brochure. Buyers should inspect the goods beforehand to satisfy themselves.

AUCTION 2 SALE

CLOSING DATE: Tuesday, November 4, 2014
at 1:00 PM ET

LOCATION: 125 Commscope Way,
Statesville, North Carolina 28625

INSPECTION: Monday, November 3, 2014
from 8:00 AM to 4:00 PM ET

HOTELS

Hampton Inn Statesville..... (704) 883-8380
1508 Cinema Drive, Statesville, NC 28625
Holiday Inn Express & Suites Statesville..... (704) 978-2800
939 Carolina Avenue N, Statesville, NC 28677
Courtyard Statesville..... (704) 768-2400
1530 Cinema Drive, Statesville, NC 28625

AIRPORT

Charlotte Douglas International Airport is approximately 1 hour from
Statesville auction site.

DIRECTIONS TO AUCTION 2 – From Charlotte Douglas Int'l

Airport: Head south on R.C. Josh Birmingham Pkwy. toward Airport Parking Dr. Keep right to stay on R.C. Josh Birmingham Pkwy. Stay left at the fork, follow signs for Billy Graham Pkwy./I-85 and merge onto Billy Graham Pkwy. Turn right to merge onto I-85N. toward Concord. Merge onto I-85 N. Take Exit 38 for US 21 N/I-77 N toward Statesville. Merge onto I-77 N/US-21 N. Take Exit 49A for US 70 W. Turn left onto US-70 W/Garner Bagnal Blvd. Continue onto W Front St. Continue onto NC-90 W/US-64 W/Taylorsville Rd./Taylorsville Hwy. Turn right onto NC-90 W. Take the first right onto Commscope Way.

TERMS OF SALE

PAYMENT: A 18% buyer's premium will be charged on all assets. The buyer's premium will be reduced to 15% for payments made by means of cash, cashier's check, company check (with bank letter of guarantee) or wire transfer within 48 hours of sale close. All items are sold "As is, Where is" without any warranties expressed or implied. Please visit www.perfectionindustrial.com for our full terms and conditions.

FURTHER INFORMATION

For further information on machinery and equipment, please contact John Bopp at (708) 606-3240 or at john@perfectionindustrial.com.