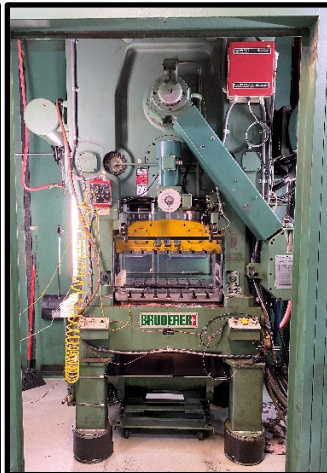




ARO Metal Stamping - Komatsu, Minster & Bruderer Presses, Coil Equipment, Tool Room & Plant Support

Featuring: 2003 Komatsu E2W 300, 2002 Minster P2H-160, Bliss HP2-200-60-42, Minster P2-150-54 & Verson 100-B2-48 Straight Side Presses, (11) Minster & Bruderer High Speed Presses (up to 100 Ton), OBI Presses, Large Quantity of Coil Equipment, Hamai MC-5VA Vertical Machining Center, Mitsubishi FX-20 Wire EDM, Press Brakes, Spot Welder, Insertion Press, Tool Room & Plant Support

Webcast Auction on May 28, 2020 at 11 AM Central Time



Inspection

Wednesday, May 27, by appointment only. We encourage inspections held via 1-on-1 video conferencing, however in person inspections can still be accommodated if required.

Payment

Due to this Webcast-only auction having no option for onsite bidding, we have reduced the Buyer's Premium for webcast buyers in this auction to 16% providing full payment is made within 48 hours following the sale. Acceptable forms of payment are cashier's check, company check (with bank letter of guarantee) or wire transfer within 48 hours of the sale close. For any Buyers failing to pay within the 48 hour stated payment period, the Buyer's Premium will be increased to 18%. Everything will be sold to the highest bidder, in accordance with the Auctioneer's customary "Terms of Sale", copies of which will be posted on the Auctioneer's website and subject to additional terms announced the day of sale. All items are sold "As is, Where is" without any warranty, express or implied.

Deadlines

All items must be removed no later than Friday, June 12. All removal is strictly on an appointment only basis. Anyone removing purchased items with a lift truck or another powered vehicle must have a certificate of insurance with a \$2M General Liability policy, and that certificate must be provided to the auctioneer for review and approval prior to the auction.

To avoid any public gatherings, there will be no onsite participation in this Webcast-only auction. All bidders will be able to place live, real-time bids using a desktop or mobile device (the exact same way Webcast bidders have participated in previous sales) and can listen live in real-time to the auctioneer's audio stream.

Location

78 Congress Circle W
Roselle, IL 60172

Rigging

Pedowitz Machinery Movers

James Foreman
Office: (252) 234-2888
Cell: (561) 234-8758
james@pedowitz.com

Rite Industrial

Chad Boelk
(608) 215-9941
chad@riteindustrialmovers.com

For General Auction Questions

Jennifer Reiner
[\(847\) 545-6374](tel:8475456374)
jennifer@perfectionindustrial.com

Accounting

Kathy Walker 847.427.3333 x 119
Inesa Dicapetris 847.427.3333 x 126

Lot Number	Description
1	SUSTA/KENNEDY Wood Top Work Bench, 23.5" x 79" Top, w/ Ball Bearing Drawer Base
2	Wood Top Work Bench, 30" x 72"
3	Wood Top Work Bench, 30" x 60", w/ Light
4	Wood Top Work Bench, 30" x 72"
5	Wood Top Work Bench, 30" x 96"
6	Wood Top Work Bench, 30" x 96"
7	Heavy Duty Work Bench, 29" x 120"
8	WERNER 12' Fiberglass Ladder
9	WERNER 8' Fiberglass Ladder
10	WERNER 32' Fiberglass Extension Ladder
11	CINCINNATI BICKFORD 4' x 10" Radial Arm Drill, s/n 1R5403, 18" x 24" x 18" Table, 140-1200 RPM, 3 HP, (Located at 935 N Central Ave, Wood Dale, Il 60191)
12	BRIDGEPORT Series I Milling Machine, s/n 98609, Mitutoyo DRO
13	ALLIANT 42-S Milling Machine, s/n 70510975, Acu-Rite Mill Mate 2-Axis DRO
14	OKAMOTO Linear 612 Surface Grinder, s/n 2936U
15	GROB NS18 Vertical Bandsaw, s/n 9420
16	RIDGID DP15501 Drill Press, s/n AM052443797, w/ Heinrich Pneumatic Vise
17	RIDGID DP15501 Drill Press, s/n AM062152880, w/ Heinrich Pneumatic Vise
18	REXON RDM-100A 14" Drill Press, s/n 160252
19	SEARS ROEBUCK 113.213780 15" Drill Press, s/n 2347.P0053
20	FAMCO #3 Benchtop Arbor Press
21	Unknown Make Benchtop Arbor Press
22	ROTO-FINISH 6681 Vibratory Finisher, s/n 0203D-05-D3
23	Blue Vibratory Finisher, 36" Bowl Diameter
24	SWIFT P50-1-50-12P Spot Welder, s/n 5558, 50 KVA, 12" Throat, Entron EN1000 Weld Control
25	PEMSERTER PS-1000 Insertion Press, s/n 100-B036, 8 Ton, 600-16,000 Lbs. Ram Force, 20" Throat
26	SNOW TA-3RM-S Mill, s/n M4086-679, 3/4 HP 10.5" x 25.5" Table, 8" Throat
27	RIVITOR R Rivet Machine, s/n 1035, w/ Touch-O-Matic 500-2-02 Safety Device
28	VERSON 65 Ton Press Brake, s/n 27163.206.65, 12" Shut Height, 5" Stroke, 3" Adj, 108"OA, 78" Between Uprights
29	Lot of Assorted Press Brake and Punch Tooling
30	MITSUBISHI FX-20 CNC Wire EDM, s/n na, w/ Mitsubishi W11FX2 Control
31	HAMAI MC-5VA Vertical Machining Center, s/n 5409, Fanuc O-M Series Control, 24 ATC, Cat 50 Spindle Taper, 47" x 18.5" Table
32	SMW 200T Setup Switcher, s/n na, 39.5" x 40" Table
33	KURT D100 10" Machine Vise, s/n 000361
34	8" Machine Vise
35	Double Sided Rack of Vise Jaws
36	Lot of (6) CAT 50 Tool Holders
37	Lot of (5) CAT 50 Tool Holders
38	Lot of (5) CAT 50 Tool Holders

39	Lot of (5) CAT 50 Tool Holders
40	Lot of (5) CAT 50 Tool Holders
41	Lot of (5) CAT 50 Tool Holders
42	Lot of (5) CAT 50 Tool Holders
43	Lot of (5) CAT 50 Tool Holders
44	Lot of (5) CAT 50 Tool Holders
45	Lot of (5) CAT 50 Tool Holders
46	Lot of Assorted Carbide Tooling
47	HARDINGE Cross Slide w/ Compound Rest
48	6" x 6" Sine Plate w/ Tool Sharpener
49	ASH PBE-026 5C Radius Dresser
50	Herman Schmidt 6" x 6" Permanent Magnetic Chuck
51	Suburban Magnetic Cylindrical Square
52	Lot of Assorted Collets and Quick Change Collets
53	Lot of Assorted C-Clamps and Bar Clamps
54	2003 KOMATSU E2W 300 Straight Side Press, s/n 10047, 300 Ton Capacity, 20-40 SPM, 11.81" Stroke, 23.62" Die Height, 7.87" Die Adjustment, 82.68" x 47.24" Slide Dimensions, 94.49" x 47.24" x 7.87" Bolster Dimensions, Dual Palm Buttons, Komatsu PLC Control, (Press #36)
55	COE Coil Line Comprising CPR-PO-10024 Uncoiler w/ Coil Car, s/n 36039-4, 10,000 Lb. Capacity, 24" Max Coil Width, 72" Max Coil OD, 19.25-24.75" Expansion Range, R-L Feed Direction, CPPS-RO-350 3.50" x 24" Power Straightener, s/n 36039-3, Threading Table, CPRF-S324 Servo Master Series 3 Roll Feed, s/n 36039-1, .187" x 12" / .125" Thick x 24" Capacity, (Press #36)
56	2002 MINSTER P2H-160 Precision Straight Side Press, s/n 30126, 180 Ton Capacity, 63" x 33.5" Bed, 3.9" Stroke, 17.7" Shut Height, 70-250 SPM, Minster V6 Touch Screen Control (Located at 805 Golf Lane, Bensenville, IL 60106)
57	MINSTER P2-150-54 Straight Side Press, s/n P2-150-19233, 150 Ton Capacity, 54" x 40" Bed, 20" Shut Height, 4" Adjustment, 6" Stroke, 45-90 SPM, w/ Wintriss Autoset PAC Load Analyzer and SmartPAC Automation Control, (Press #3)
58	Coil Line Comprising LITTELL 40-24 Auto Centering Reel, s/n 89688-89, 4000 Lb. Capacity, 15-20" ID, 48" Max OD, 18" Max Width, Littell 418-6PDL Straightener, s/n 89686-89, .018-.035" Thick x 18"W Capacity, PA INDUSTRIES SRF-16 Servo Feed, s/n 4461195
59	BLISS HP2-200-60-42 Straight Side Press, s/n H63044, 200 Ton Capacity, 60" x 42" Bed, 2.5" Stroke, 70-135 SPM, 10-16" Shut Height, 6" Adjustment, Wintriss SmartPac 2 Control, WPC Clutch/Brake Control
60	PA INDUSTRIES SRF-12 Servo Feed, s/n 10280798 (Bliss 200 Ton)
61	<p>VERSON 100-B2-48 Straight Side Press, s/n 28856, 100 Ton Capacity, 48" x 30" Bed, 15" Shut Height, 5" Adjustment, 6" Stroke, 40-80 SPM, w/ Wintriss Autoset PAC Load Analyzer, SmartPAC Automation Control, (Press #1)</p>
62	<p>MINSTER P2-100-48 Piece-Maker High Speed Press, s/n P2-100-23974, 100 Ton Capacity, 48" x 31" Bed, 17.5" Shut Height, 4" Adjustment, 3" Stroke, 0-250 SPM, Wintriss Smart PAC Press Automation Control, (Press #30)</p>
63	VAMCO CFS-6 II Servo Feed, s/n 2.546PTPCL103, (Press #30)
64	<p>MINSTER P2-100-48 Piece-Maker High Speed Press, s/n P2-100-15718, 100 Ton Capacity, 48" x 31" Bed, 14" Shut Height, 4" Adjustment, 3" Stroke, 0-200 SPM, Wintriss Smart PAC Press Automation Control, (Press #29)</p>

65	VAMCO CFS-14 II Servo Feed, s/n 2.51214PVPCL195, (Press # 29)
66	MINSTER P2-60 Piece-Maker High Speed Press, s/n P2-60-28198, 60 Ton Capacity, 36"x 25" Bed, 3" Adjustment, 3" Stroke, 0-280 SPM w/ Wintriss AutoSet 1504 Load Analyzer and DiPro 1500 Die Protection, (Press #18)
67	VAMCO CFS6-II Servo Feed, s/n 2.546PVPCL135, (Press #18)
68	MINSTER P2-60 Piece-Maker High Speed Press, s/n P2-60-27745, 60 Ton Capacity, 36"x 25" Bed, 3" Adjustment, 2" Stroke, 0-400 SPM, Wintriss DiPro 1500 Die Protection, Wintriss AutoSet 1500 Plus Load Analyzer, (Press #16)
69	PA INDUSTRIES SRF-12 ADVANTAGE Servo Feed, s/n 1450893, (Press #16)
70	MINSTER P2-30-30 Piece-Maker High Speed Press, s/n P2-30-19341, 30 Ton Capacity, 30" x 19" Bed, 150-450 SPM, 2" Stroke, 11.5" Shut Height w/ Lot 71 PERFECTO 300-Feed, s/n F3-3643-1 (Press #115)
72	MINSTER P2-30-30 Piece-Maker High Speed Press, s/n P2-30-17745, 30 Ton Capacity, 30"x 19" Bed, 9.75" Shut Height, 2" Adjustment, 2" Stroke, 100-300 SPM, w/ Lot 73 PERFECTO 300-6 DRF 8SC Feed, s/n F3-3092 (Press #17)
74	MINSTER P2-30-30 Piece-Maker High Speed Press, s/n P2-30-11895, 30 Ton Capacity, 32"x 19.25" Bed, 9.25" Shut Height, 2" Adjustment, 1.75" Stroke, 0-300 SPM, Wintriss Smart PAC Press Automation Control, (Press #22)
75	VAMCO CFS-6 II Servo Feed, s/n 2.546PVMCL126, (Press #22)
76	BRUDERER BSTA.22-E High Speed Press, s/n 4013, 22 Ton Capacity, 100-1800 SPM, 1-1/2 Max Stroke (Adjustable), 14.96" Tool Clearance, 8.66" Max Strip Clearance Width, 14.17" x 6.69" Bed Opening, Wintriss DiPro 1500, (Press #15)
77	BRUDERER BSTA 60II High Speed Press, s/n 8055, 66 Ton, 100-1120 SPM, 5/8-2" Adjustable Stroke, 30" x 25.6" Bolster, Wintriss SmartPac 2 Press Control, (Located at 935 N Central Ave, Wood Dale, IL 60191) (DELAYED REMOVAL unit June 14th, 2020)
78	BRUDERER BSTA 30 High Speed Press, s/n 5208, 30 Ton Capacity, 10.5" Shut Height, 4.724" Adjustment, 0.75"-1.5" Stroke, 0-600 SPM, (Press #14)
79	BRUDERER BSTA 30 High Speed Press, s/n 4627, 30 Ton Capacity, 100-800 SPM, .375-1.57" Stroke (Adjustable), 8" Shut Height, 21" x 17" Bed Area, (Press #13)
80	USI CLEARING No 90 OBI Press, s/n 54-2132, 90 Ton Capacity, 38"x 27" Bed, 13 Shut Height, 4 Adjustment, 8" Stroke, 35 SPM, (Press #26)
81	SOUTHBEND JOHNSON OBI-80 OBI Press, s/n 81022, 80 Ton Capacity, 36"x 24" Bed, 12.125" Shut Height, 3.5" Adjustment, 4" Stroke, 87-175 SPM, w/ Wintriss DiPro 1500 Die Protection, Wintriss Clutch/Brake Control, (Press #25)
82	Coil Line comprising LITTELL No. 10 Centering Reel, 1000 LB Capacity, LITTELL No. 30B Straightener, s/n 82791, w/ PA INDUSTRIES SRF-125 Servo Feed, s/n 6850197
83	WALSH No 80 OBI Press, s/n 11061, 80 Ton Capacity, 32"x 18" Bed, 9" Shut Height, 4" Adjustment, 57-114 SPM, (Press #24)
84	WALSH No. 65 OBI Press, s/n na, 65 Ton Capacity, 18-1/2" x 37-1/2" Bed, 19-1/2" x 13-1/2" Slide, 4" Stroke, Opening Through Back, (Press #46)
85	WALSH No. 38 OBI Press, s/n 11870, 38 Ton Capacity, 14" x 34" Bed, 17" x 13" Slide, 4" Stroke, 11-1/2" Opening Through Back, (Press #76)
86	MINSTER B1-32 OBI High Speed Press, s/n B1-32-12889, 32 Ton Capacity, 24"x 15" Bed, 10.25" Shut Height, 2.25" Adjustment, 1" Stroke, 200-400 SPM, (Press #8)
87	PA INDUSTRIES 6" Servo Feed, s/n na, w/Edge Servo Feed Controller
88	PA INDUSTRIES SRF-100U Servo Feed, s/n 33570805, w/ Ultra Edge Controller
88A	MINSTER MEF3-10 Feeder, s/n 1850428, 10" Capacity

89	KOHLER 24.4002000.2 Straightener/Uncoiler, s/n 55089
90	BRUDERER 12 120 B Straightener, s/n 30 483, 4.7" Max Width, .040" Material Thickness, w/ Dual End Uncoiler, 6" Max Width
91	BRUDERER 18260B Straightener, s/n 40148, 10" Max Width, .012-.120" Material Thickness, 19-Roll
92	RAPID-AIR SC12 Straightener, s/n 83979, 12" Max Width, .015-.050 Material Thickness
93	RAPID-AIR SB4 Straightener, s/n 124159
94	LITTELL 308-7PDL Straightener, s/n 68831-61, .041" x 8" Capacity, 10-60 FPM
95	EGAN Presspartner s20-61010" Straightener, s/n 3196
96	LITTELL Auto Centering Reel, s/n na, Approx. 16-20 ID, 12" Max Width, Approx 2500 Lb. Capacity
97	Unknown Make Uncoiler, s/n na, Approx. 16-20 ID, 12" Max Width, Approx 2500 Lb. Capacity
98	COILMATE CM3042 Pallet Decoiler, s/n 4548, 3000 Lb. Capacity
99	COILMATE CM3042 Pallet Decoiler, s/n CM272, 3000 Lb. Capacity
100	COILMATE CM3042 Pallet Decoiler, s/n 011050, 3000 Lb. Capacity
101	COILMATE CM3042 Pallet Decoiler, s/n RPM8863-010679, 3000 Lb. Capacity
102	COILMATE CM3042 Pallet Decoiler, s/n na ,3000 Lb. Capacity
103	PA INDUSTRIES SRWD2-100-LC3 Rewind Reel, s/n X15976-10/75332A, 3" Max Strip Width, 30" Dia Max Spool OD, 75 LB Max Spool Weight
104	PA INDUSTRIES SRWD1-LC3 Rewind Reel, s/n 200803-04494, 3" Max Strip Width, 30" Dia Max Spool OD, 75 LB Max Spool Weight
105	PA INDUSTRIES SRWD-100-LC2 Rewind Reel, s/n X15976-07/72499B, 3" Max Strip Width, 42" Max Spool OD, 75 Lb. Max Spool Weight
106	PA INDUSTRIES SR75RLC-2 Rewind Reel, s/n X15974-01/76-304A, 3" Max Strip Width, 42" Max Spool OD, 75 Max Spool Weight
107	PA INDUSTRIES SRWD-2-LC3/60676 Rewind Reel, s/n na, 3" Max Strip Width, 30" Dia Max Spool OD, 75 LB Max Spool Weight
108	RAPID AIR A2P Feeder, s/n 123957
109	Lot of (2) 30" and 24" Diameter Decoilers
110	Lot of (2) 30" Diameter Decoilers
111	Lot of (3) TITAN 7' x 20"W Power Belt Conveyor
112	Lot of (2) TITAN 7' x 20"W Power Belt Conveyor
113	Lot Comprising Roller Conveyor and Belt Type Conveyor w/ Axon Corp EZ-24-SRT Heat Shrink Machine , s/n A-60362
114	Titan 5' x 20" W Power Belt Conveyor
115	Lot of Assorted Powered Belt Conveyors
116	Lot of Assorted Powered Belt Conveyors
116A	Lot of Assorted PAX Powered Belt Conveyors
117	Presstronics 17" Low-Boy Feeder, s/n na
118	Presstronics 17" Low-Boy Feeder, s/n 3490-01
119	Vamco 100-6 Feeder, s/n A6S612S769L
120	Creative Packaging 2212A Heat Shrink Tunnel, s/n 588067
121	AO SMITH 295 Shop Welder, s/n 8995-672-1
122	DONALDSON 75 Dust Collector, s/n 202067
123	HERCULES HI-110 Barrel Dumper, s/n D5738, 750 Lb. Capacity

124	Lot Comprising Drill Press Heads, Lubricator, Chain Falls
125	Lot Comprising Rapid Air FX6 and (2) LX12 Feeds
126	Josef Kihlberg B561PN Stapler, s/n 0111
127	Unknown Make 18" Feeder
128	Die w/ Lourdes 2100XA Microprocessor Control
129	Set of Vibro Dynamics 9L180 Micro Level Isolator Pads
130	48" x 48" Electrical Enclosure
131	PA Industries Feeder
132	EAGLE 1947 Flammable Liquids Cabinet, 45 GAL
133	Presto P3-AA Lift Table w/ Rotating Top, s/n V49399-12
135	Lot of (2) Shop Cabinets
136	Lot of Shop Tables
137	Lot of (2) Shop Shelving Units
138	Lot of (2) Shop Shelving Units
139	Lot of (2) Shop Shelving Units
140	Lot of (2) Shop Shelving Units
141	Lot of (2) Shop Shelving Units
142	Work Bench w/ NPS No. 52 Tay Per Machines
143	Rolling Work Bench w/ Assorted Bolts
144	Rolling Hardware Cart
145	Lot of Rolling Shop Carts
146	Lot of (4) Rolling Shop Carts
147	Lot Comprising Barrel Dolly and Krylon Striping Machine
148	Lot of (3) Shop Vacs
149	(3) NPS No. 52 Tay Per s/n 321031 Packing Machines
150	Work Bench w/ Inline Tape Dispensers and Tharo 112 Plus Label Printer
151	Lot of Assorted Work Platforms
152	Lot of Custodial Supplies
153	Lot of Small Electric Motors 1 HP
154	Unknown Make 3,000 LB Coil Upender
155	(2) Perkins Oil Reservoirs
156	Famco 50-1/2A s/n P-L64USV37 Punch Press
157	Wilson 3JRaRB Hardness Tester, s/n 11696
158	Mitutoyo 24" Digital Caliper
159	CADILLAC GAGE PLA-CHEK Height Gage
160	CADILLAC GAGE PLA-CHEK 10074 Height Gage
161	CADILLAC GAGE PLA-CHEK 10057 Height Gage
162	Mitutoyo 0-12" Digital Height Gage
163	Mitutoyo HDS-12 0-12" Digimatic Height Gage
164	Mitutoyo HDS-12 0-12" Digimatic Height Gage
165	Mitutoyo 2-6" Outside Micrometers
166	Lot of (3) Pin Gage Sets from .061-.250"
167	Lot of (3) Pin Gage Sets from .251-.500"
168	Lot Comprising (2) Gage Blocks Sets and Cylindrical Gage Block Set
169	SPI Mold Finish Repair Kit and Tachometer

170	TOYOTA 7FGCU45-BCS LP Forklift, s/n 60646, 10,000 LB Capacity, 60" Fork Length, Triple Mast, Side Shift
172	CALDWELL 91-3-42 Coil Hook, s/n 14-28940, 6000 LB Capacity
173	GAI Main Basket, 1000 Lb. Capacity
174	HANDLING SYSTEMS 3-Ton Rolling Gantry, s/n 080124, 12' Under Rail, 114" Between Uprights, w/ Konecranes XN Electric Hoist w/ Pendant Control
175	ROLLING 1-Ton Gantry, 136" Under Rail, 80" Between Uprights, CM Lodestar Electric Hoist w/ Pendant Control
179	Lot of (2) Locker Room Benches
180	60" x 30" Wood Top Work Bench
181	(2) Haier Microwave Ovens
182	Hotpoint Refrigerator
183	Honeywell Fendall 2000 Eye Wash Station
184	Corner Desk Unit
185	Equipto Steel Shelving Unit
186	Desk Unit w/ Hutch and Chair