

VB 100 ELEC

+ 4.0" Electric CNC Benders



VB 100 ELEC Specifications

- Maximum Tube OD
 - Mild Steel: 101.6 mm (4.0") x 3.0 mm (.120") wall
 - Stainless Steel: 101.6 mm (4.0") x 2.4 mm (.095") wall
 - Aluminum: 101.6 mm (4.0") x 9.5 mm (.375") wall
- Maximum Centerline Radius
 - 406.4 mm / 16"
- Standard Centerline Height
 - 76.2 mm / 3.0"
- Standard Tube Length Over Mandrel
 - 3.0 M / 117"
 - Extended bed lengths available
- Maximum Torque Capacity
 - 26.55 kNm / 235k in.-lbs
- Operating Speeds
 - Bend Arm Rotation - 90° / Second / 15 RPM Maximum
 - Carriage Rotation - 180° / Second / 30 RPM Maximum
 - Carriage Travel - 3,500 IPM / 89 m/min)

VB 100 ELEC Standard Features

- All-electric design, clean & quiet
- Choice between two different bend arm designs; the standard drop away clamp for serpentine bending or an inline clamp for extrusion bending.
- Lightspeed CNC touch screen control
- Simultaneous axis motions reduce part shape cycle time
- Real-time control system provides highest level of process repeatability
- Automatic lubrication on Roller & Ball Screws for extended reliability
- Safety package with Proximity Laser Scanner
- Automatic Pneumatic actuated Tube Support

Servo electric Y, B & C axis

Servo electric clamp, pressure die and pressure die boost

Servo electric, programmable, mandrel extractor option

Servo electric X & Z axis (Headshifter option)



Workpiece Carriage

Brushless AC servo drive motors
Y (DBB) & B (POB) Axes

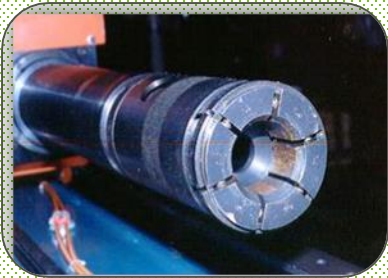
Low maintenance - High reliability



Quick-Change, Single Piece Collets

Available with optional Electric Carriage
Booster (4 ton or 8 ton)

Superior accuracy and repeatability



Collet Housing



Collet



Tube Stop

Quick Change OD Collet System

- No tools required, one piece collet design
- Faster set-ups
- No lost segments



Brushless Servomotor

Planetary Gearbox Reduction for
High Torque

Integral Design Based on
Commercially Available
Components



Bend Arm Drive System

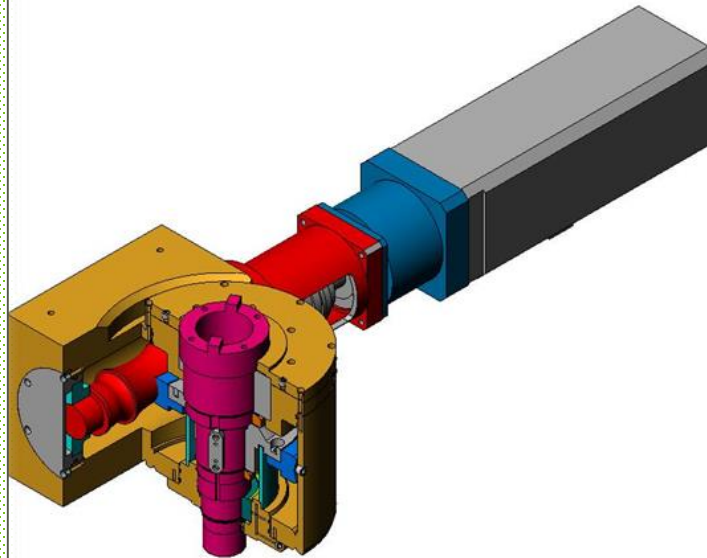
Electric C Axis

**Proven, robust and
reliable design**

**Rexroth / Indramat
brushless servo motor
and drive**

**Alpha planetary
gearbox**

**Double-enveloping
wormgear final drive for
high torque and
reduced wear in a
compact size**



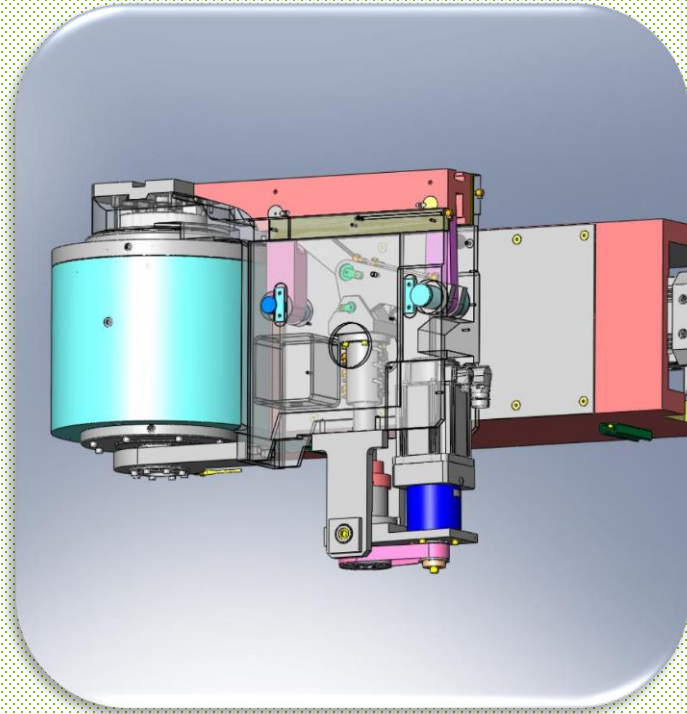
High Capacity Bend Arm with Electric Clamp

Reliable, efficient ball screw, servo-driven

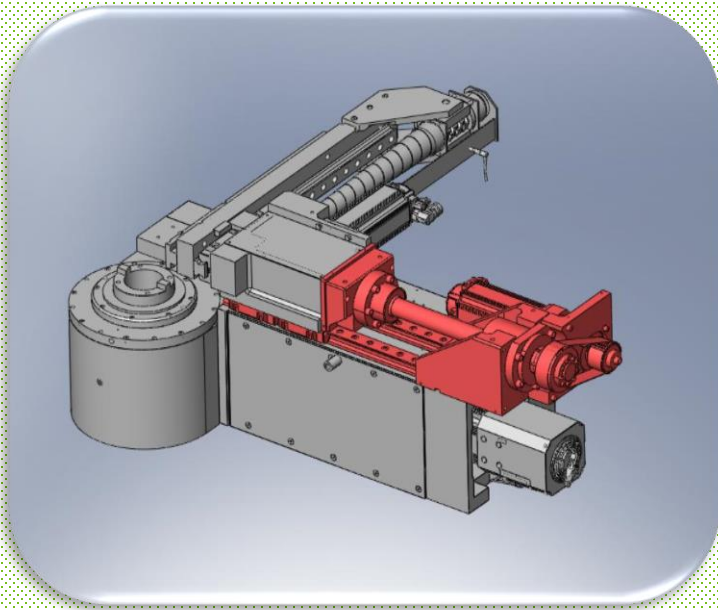
Programmable, Constant Force Clamp actuator eliminates clamp die slippage & simplifies setup

Programmable clamp die force per each bend, saved along with bend program

Available with in-line, position-controlled clamp die actuator



Servo-Electric Pressure Die Assembly



Dual mode “soft touch” pressure die control

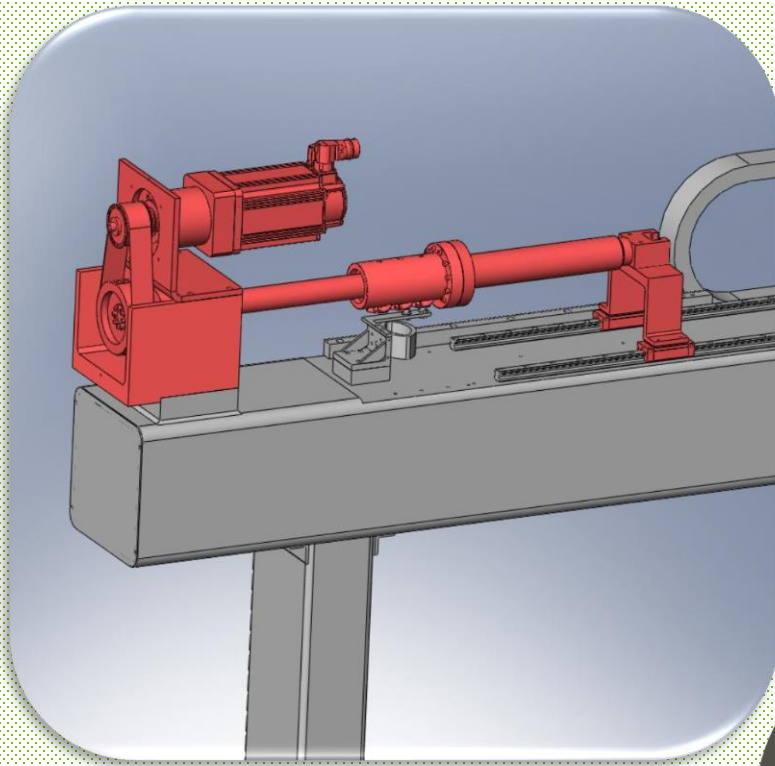
Self calibrating pressure die for automatic setup

Programmable position or force control per each bend, saved along with bend program

Position control

Force control

Mandrel Extractor



Ball screw, servo
driven

Servo Electric
Mandrel
Extractor

8" Programmable
extract distance
and 4"
programmable
tangent adjust
distance

Programmable
tangent position
and retract
distance per each
bend, saved along
with bend program

Benefits:

- Quick and easy programming
- Operator preference using touch screen or keyboard provides maximum flexibility
- Menu-driven user-friendly software
- Interface to Vector Tube Data Centers included
- Stores part programs on hard drive, network or removable drive
- **Feature:** Touch screen And/Or Keyboard Input



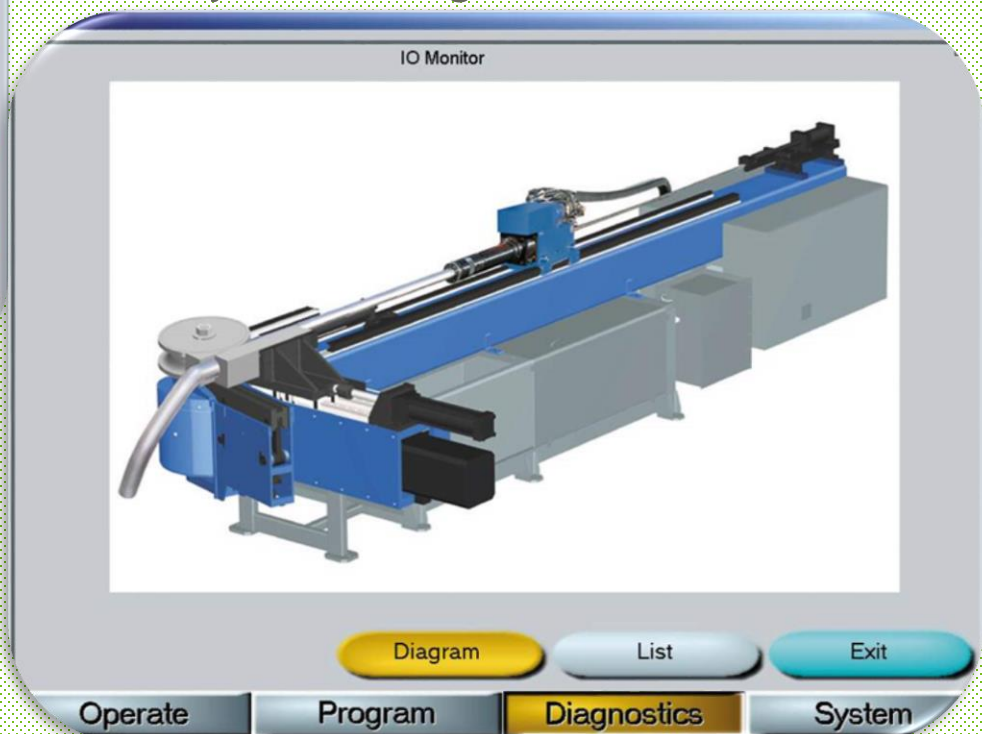
Available as floor console or pendant mount

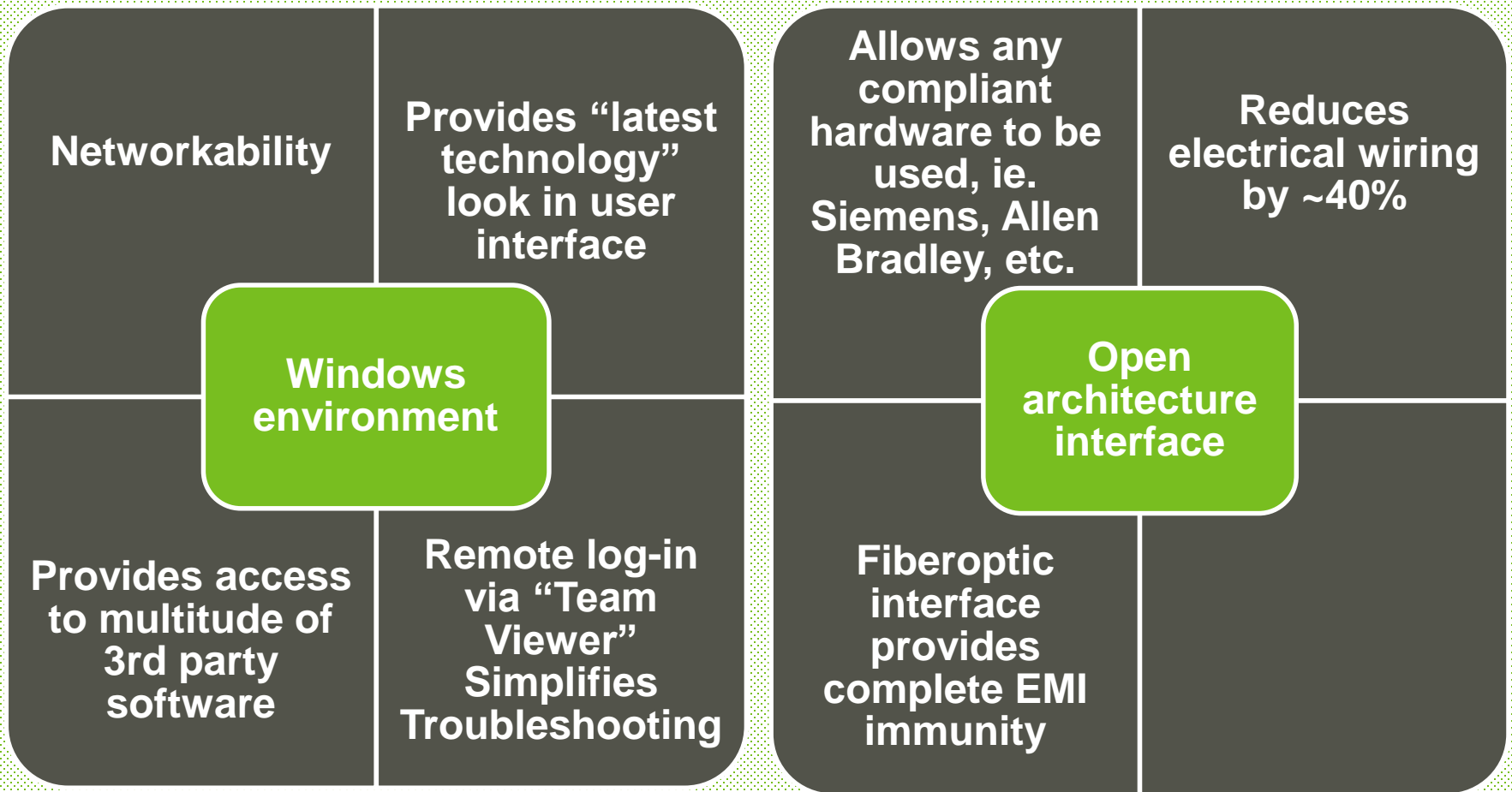


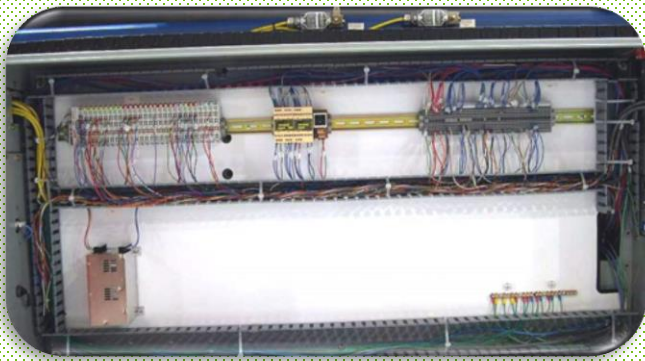
Auto Production Screen

Provides “latest technology” look in user interface

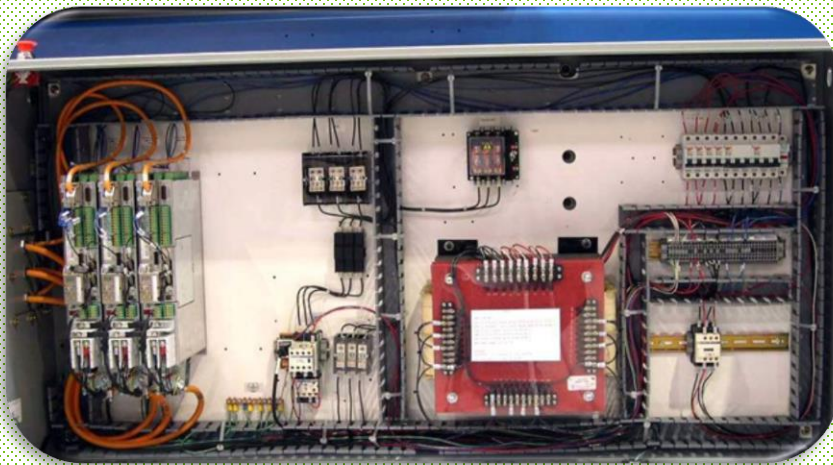
System Diagnostic Screen







I/O Cabinet



High Voltage Cabinet

Features:

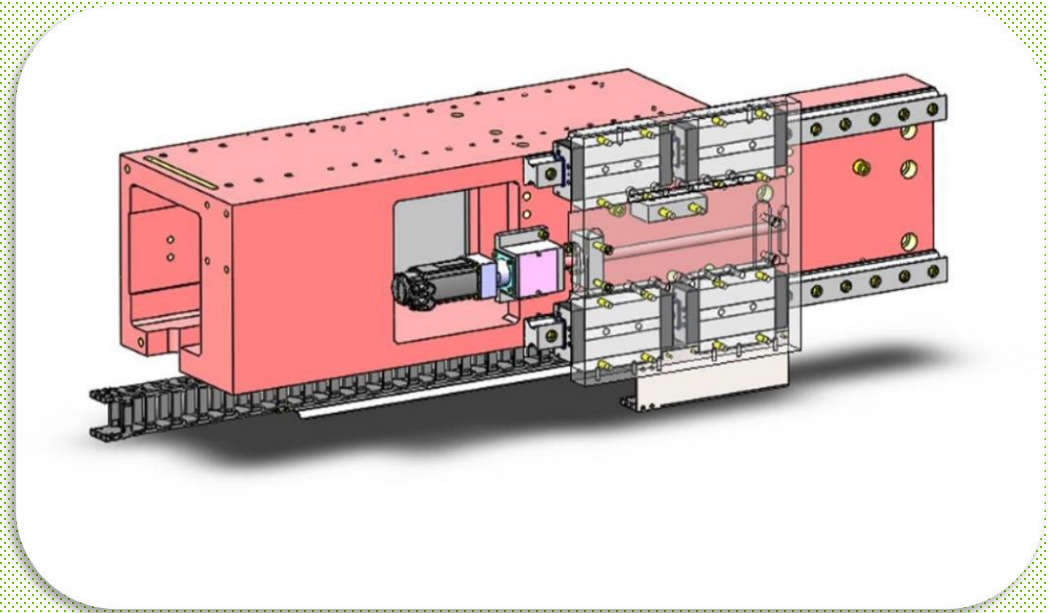
- Clean
- Simple layout of electronic cabinets

Benefits:

- Less heat generated, resulting in long life and extended reliability
- Easy to troubleshoot, due to fewer components
- Commercially available replacement parts
- New drives with redundant “safety on board” design

Programmable X-axis

- Provides automatic CLR adjustment based on programmed CLR parameter
- CLR position filed with part number in control
- Also available in powered non-servo version



Programmable Head Shifter

High rigidity
design with
precision linear
bearings

High speed
positioning

Includes
programmable
centerline radius
(x-axis)

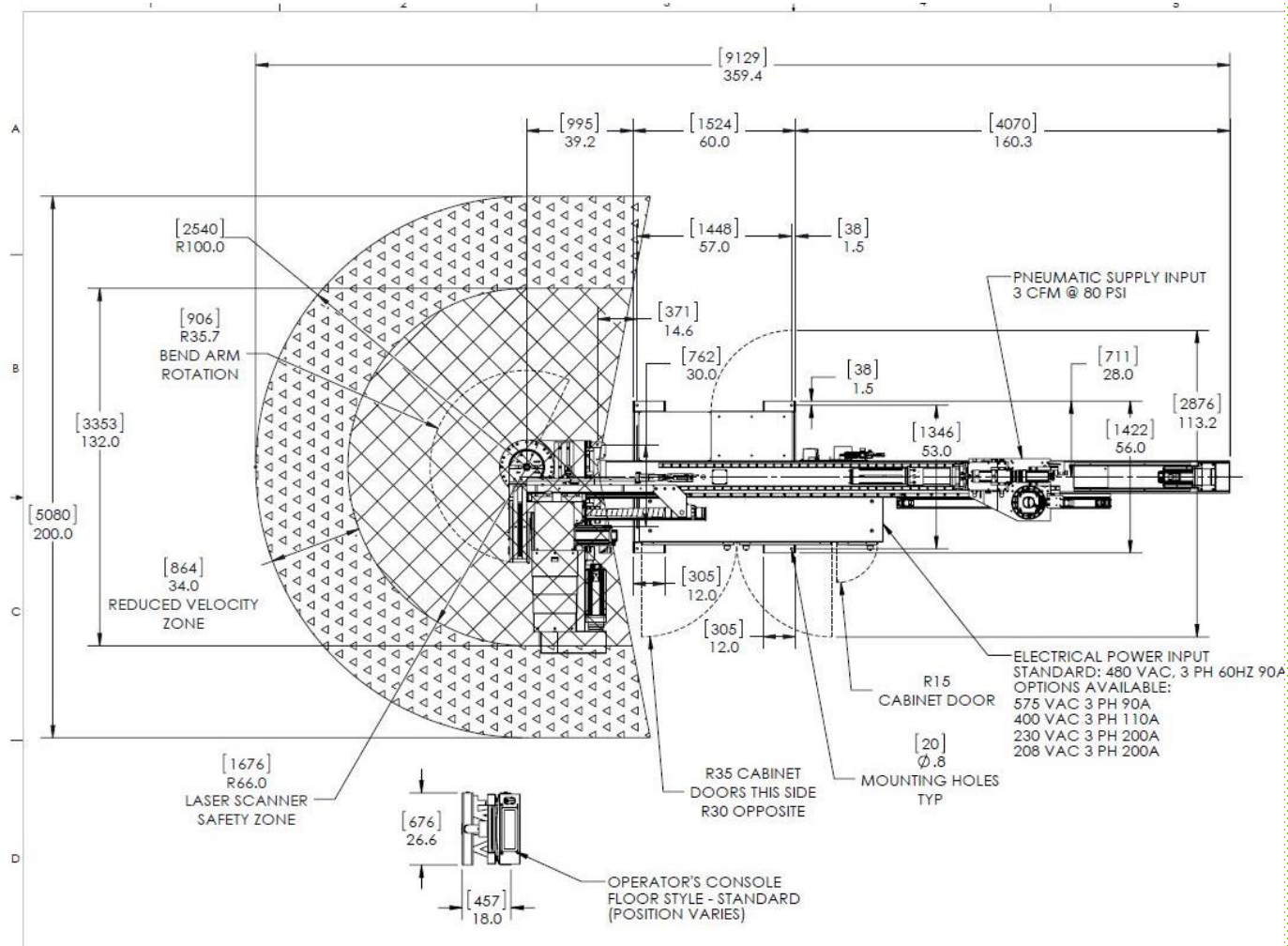
Includes
programmable tool
levels (z-axis)



Lightspeed control supports up to 6
numerically controlled die levels within
a 12" high stack
(Engineering Review Required)

Installation Diagram

(standard length shown – optional bed lengths available)







THANK YOU!

CONTACT US

First Last

Title

name@AdditionMT.com

office: +1 (000) 000-0000

mobile: +1 (000) 000-0000

The **ADDITION** Brand Family





THANK YOU!

The **ADDITION** Brand Family

