

# W.W.Cannon, Inc.

## Design. Layout. Build. Install.

### 800-442-3061

### www.wwcannon.com

AUTOMOTIVE PARTS & SERVICE DEPARTMENT STORAGE PLANNING SPECIALISTS

AUSTIN • DALLAS • FORT WORTH • HOUSTON • SAN ANTONIO

2653 BRENNER DR • DALLAS, TX 75220

TEL (214) 357-2846 • TOLL FREE 1-800-442-3061 • FAX (214) 357-4576

Visit our website @ [www.wwcannon.com](http://www.wwcannon.com)

Date: 28-Jul-18

### Customer

Name: Raymon Johnson  
Company: Partsmaster Div.-NCH Corp.  
Address: 1400 E. Northgate  
City: Irving State: TX Zip: 75063

Phone#: (972)438-0625  
Fax#: (972)438-0196  
Email: [rjohnson@nch.com](mailto:rjohnson@nch.com)  
All Prices are F.O.B. Factory,  
unless otherwise stated.

Total Wt.: \_\_\_\_\_

### PROPOSAL: COMPLETE CONVEYOR SYSTEM

PRODUCT DESCRIPTION	QUANTITY	PRICE	TOTAL
SCOPE OF WORK TO INCLUDE ALL ITEMS LISTED BELOW			
CONVEYOR SYSTEM (7-PAGE DETAIL ATTACHED)	1	\$260,556.00	\$260,556.00
ELECTRICAL INSTALLATION	1	\$46,350.00	\$46,350.00
INSTALLATION OF CONVEYOR NON-ELECTRICAL	1	\$26,750.00	\$26,750.00
<b>PO # CFR-2019133-01</b>			
TERMS : 50% DUE AT TIME OF ORDER			
BALANCE DUE NET 10 DAYS AFTER JOB COMPLETION			
<b>8.25% TAX ON \$334,781.00 = \$27,619.43</b>			
<b>PROFESSIONAL INSTALLATION BY W.W. CANNON</b>			

EST. SHIPMENT IN 6 - 8 WEEKS AFTER RECEIPT OF ORDER.

(THIS PROPOSAL IS GOOD FOR 30 DAYS!!)

Sub Total	\$333,656.00
Est. Freight	\$1,125.00
Installation	SEE ABOVE
TOTAL *	\$334,781.00

**\*NOTE: ALL PRICES SUBJECT TO TEXAS SALES TAX WHERE APPLICABLE.**

**IF INSTALLATION IS REQUIRED, PLEASE REFER TO THE ATTACHED QUOTATION SUPPLEMENT "A".**

Orders resulting from this quotation are subject to approval from WW Cannon's Credit Department. Payment terms are NET 10 DAYS, US\$ unless otherwise negotiated. Orders or account balances exceeding \$10,000.00, or accounts aged beyond terms will be subject to special credit terms which may include deposits and/or progress payments. Prices quoted are valid for 30 days, and are in US\$. This proposal is subject to WW Cannon, Inc.'s terms and conditions of sale. Any acceptance of this proposal with provisions that supersede, modify, add or detract from WW Cannon, Inc.'s terms and conditions are not accepted by WW Cannon, Inc. and WW Cannon, Inc.'s terms and conditions shall govern.

ACCEPTED BY: \_\_\_\_\_

P.O.#: \_\_\_\_\_

SUBMITTED BY: \_\_\_\_\_

*Rode Chambers*  
Rode Chambers

[rchambers@wwcannon.com](mailto:rchambers@wwcannon.com)

# W.W.Cannon, Inc.

## Design. Layout. Build. Install.

### 800-442-3061

### www.wwcannon.com

AUTOMOTIVE PARTS & SERVICE DEPARTMENT STORAGE PLANNING SPECIALISTS

AUSTIN · DALLAS · FORT WORTH · HOUSTON · SAN ANTONIO

2653 BRENNER DR · DALLAS, TX 75220

TEL (214) 357-2846 · TOLL FREE 1-800-442-3061 · FAX (214) 357-4576

Visit our website @ [www.wwcannon.com](http://www.wwcannon.com)

Date: 15-Jan-19

### Customer

Name: Raymon Johnson  
Company: Partsmaster Div. - NCH Corp.  
Address: 1400 E. Northgate  
City: Irving State: TX Zip: 75062

Phone#: (972) 438-0625  
Fax#: (972) 438-0196  
Email: [rjohnson@nch.com](mailto:rjohnson@nch.com)  
All Prices are F.O.B. Factory,  
unless otherwise stated.  
Total Wt.: \_\_\_\_\_

### PROPOSAL: ADDITIONAL CONTROLS

PRODUCT DESCRIPTION	QUANTITY	PRICE	TOTAL
PROVIDE AND INSTALL [3] ADDITIONAL CONVEYOR CONTROL			
[3] ADDITIONAL ZONE RELEASE SIGNALS			
[3] LINE FULL PHOTO EYES			
[1] ZONE RELEASE SWITCH		\$1,250.00	\$1,250.00
SEE ATTACHED			
8.25 % TAX ON \$1250.00 = \$103.13			

EST. SHIPMENT IN COMPLETED AFTER RECEIPT OF ORDER.

(THIS PROPOSAL IS GOOD FOR 30 DAYS!!)

Sub Total	\$1,250.00
Est. Freight	N/A
Installation	N/A
TOTAL *	\$1,250.00

\*NOTE: ALL PRICES SUBJECT TO TEXAS SALES TAX WHERE APPLICABLE.

IF INSTALLATION IS REQUIRED, PLEASE REFER TO THE ATTACHED QUOTATION SUPPLEMENT "A".

Orders resulting from this quotation are subject to approval from WW Cannon's Credit Department. Payment terms are NET 10 DAYS, US\$ unless otherwise negotiated. Orders or account balances exceeding \$10,000.00, or accounts aged beyond terms will be subject to special credit terms which may include deposits and/or progress payments. Prices quoted are valid for 30 days, and are in US\$. This proposal is subject to WW Cannon, Inc.'s terms and conditions of sale. Any acceptance of this proposal with provisions that supersede, modify, add or detract from WW Cannon, Inc.'s terms and conditions are not accepted by WW Cannon, Inc. and WW Cannon, Inc.'s terms and conditions shall govern.

ACCEPTED BY: \_\_\_\_\_

P.O.#: \_\_\_\_\_

SUBMITTED BY: \_\_\_\_\_

*Rode Chambers*  
Rode Chambers

[rchambers@wwcannon.com](mailto:rchambers@wwcannon.com)



# W.W. Cannon, Inc.

## Design. Layout. Build. Install.

### 800-442-3061

### www.wwcannon.com

AUTOMOTIVE PARTS & SERVICE DEPARTMENT STORAGE PLANNING SPECIALISTS

AUSTIN · DALLAS · FORT WORTH · HOUSTON · SAN ANTONIO

2653 BRENNER DR · DALLAS, TX 75220

TEL (214) 357-2846 · TOLL FREE 1-800-442-3061 · FAX (214) 357-4576

Visit our website @ [www.wwcannon.com](http://www.wwcannon.com)

Date: 11-Jan-19

#### Customer

Name: Raymon Johnson  
Company: Partmaster Div.- NCH Corp.  
Address: 1400 E. Northgate  
City: Irving State: TX Zip: 75062

Phone#: (972)438-0625  
Fax#: (972)438-0196  
Email:  
All Prices are F.O.B. Factory,  
unless otherwise stated.  
Total WL: \_\_\_\_\_

#### PROPOSAL: CONVEYOR MANUAL STOP

PRODUCT DESCRIPTION	QUANTITY	PRICE	TOTAL
MANUAL ZONE CONVEYOR STOPS RIGHT HAND OPERATION	6	\$368.00	\$2,208.00
MANUAL OPERATION			
EST. SHIPMENT IN <u>2-4 WEEKS</u> AFTER RECEIPT OF ORDER.			
(THIS PROPOSAL IS GOOD FOR 30 DAYS!!)			
Sub Total			\$2,208.00
Est. Freight			TBD
Installation			\$615.00
TOTAL *			\$2,823.00

\*NOTE: ALL PRICES SUBJECT TO TEXAS SALES TAX WHERE APPLICABLE.

IF INSTALLATION IS REQUIRED, PLEASE REFER TO THE ATTACHED QUOTATION SUPPLEMENT "A".

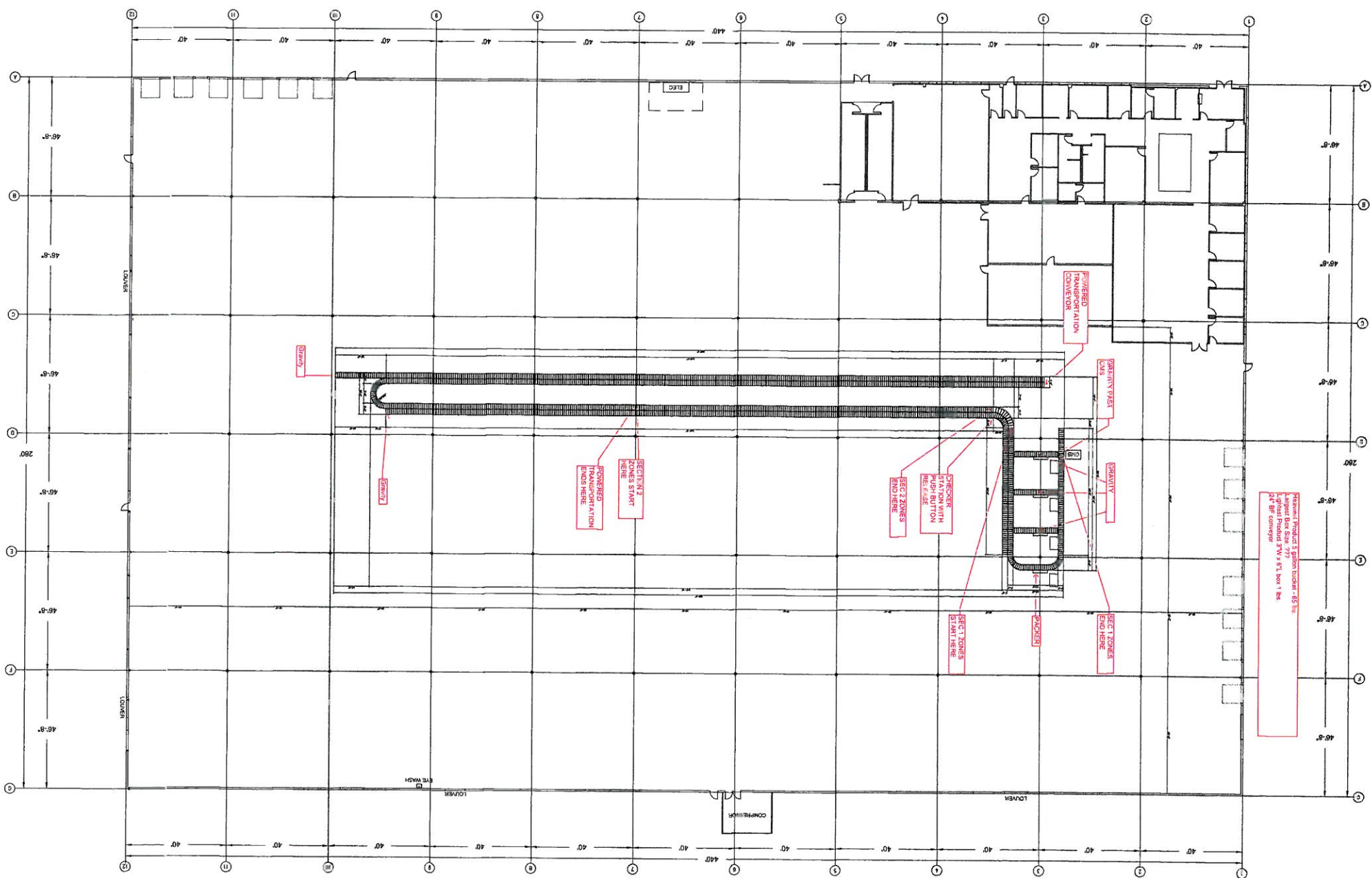
Orders resulting from this quotation are subject to approval from WW Cannon's Credit Department. Payment terms are NET 10 DAYS, US\$ unless otherwise negotiated. Orders or account balances exceeding \$10,000.00, or accounts aged beyond terms will be subject to special credit terms which may include deposits and/or progress payments. Prices quoted are valid for 30 days, and are in US\$. This proposal is subject to WW Cannon, Inc.'s terms and conditions of sale. Any acceptance of this proposal with provisions that supersede, modify, add or detract from WW Cannon, Inc.'s terms and conditions are not accepted by WW Cannon, Inc. and WW Cannon, Inc.'s terms and conditions shall govern.

ACCEPTED BY: \_\_\_\_\_

P.O.#: \_\_\_\_\_

SUBMITTED BY: \_\_\_\_\_

*Rode Chambers*  
Rode Chambers  
[rchambers@wwcannon.com](mailto:rchambers@wwcannon.com)



MAY 16, 2018

Greg Brown

W. W. Cannon, Inc.

Quote: Greenville Conveyor System

Scope of work includes:

- Provide and install (1) – 16 Motor PLC control panel with Allen-Bradley Micrologix PLC controls, start up alert horn, start/stop/E-stop buttons, power on and fault pilot lights (480v 60amp), Hoffman 48"x36"x12" with leg kit NEMA-12 enclosure with 10% spare. Includes Ventilation fan, motor overload and e-stop pull cord trip fault indication.
- Provide and install standard NEMA-1 EMI conduit and wiring for:
  - (16) Motors with type-1 disconnect switch.
  - (7) 120v Power feeds for smart zone power supplies
  - (1) Photo eye
  - (7) e-stop pull cords
  - (1) Zone release pushbutton
- Provide system engineering, drawings, documentation, system-startup and customer approval

\*Exclusions to the above: power feeder to control panel; permits and inspections; UL certification for control panel; premium labor for off shifts or weekends; engineered stamped drawings; sales tax.

\*\*Terms Net 30 Day Progress Billing.

**Optional Permitting and Inspections for Greenville, TX: -**

Thank you for the opportunity.

Jim Simmons

Bostech Services, Inc. - Automation Division

232 Commercial St. Garland, TX. 75040

Office: 972-485-8808 - Cell: 214-796-0057

TECL 19658 - TACL A005456C

Regulated by the Texas Department of Licensing and Regulation





**Roach Conveyors**  
808 HWY 463 • TRUMANN, AR 72472-1310  
Tel 870-483-7631 • Fax 870-483-7049  
Systems and Components

Page 1 of 13

Quote Number: Q517620 - 3

Quote Date: 9/29/2018

W W Cannon Inc  
C937 AH / AH

Attention: **Rode Chambers**  
Distributor: W W Cannon Inc  
PO Box 540006  
Dallas, TX 75354

Salesman: **Allen Harness**  
Roach Conveyors  
Roach Manufacturing Corp  
PO Box 1310  
Trumann, AR 72472-1310

Phone: (469) 585-0064  
Fax: (214) 357-4576  
Email: [rchambers@wvcannon.com](mailto:rchambers@wvcannon.com)

Phone: (870) 483-7631 1437  
Fax: (870) 483-7049  
Email: [aharness@RoachConveyors.com](mailto:aharness@RoachConveyors.com)

Reference: SZ796ZPA, 196LRC

Shipment: 18 Working Days

Terms: Pending Credit Arrangements

FOB: Factory

NOTES: REFERENCE: PARTSMaster

Due to current workload, ALL lead times referenced in this quote WILL BE ADJUSTED when the order is placed.

Referenced Lead time:

Current Lead time at Order:

Note:  
As always, Special Paint  
Color items will still have  
an additional 5 working  
days added when ordered.

24 Hour items:	24 HR	>	24 HR	>	28 WD	----
2 week items:	13 WD	>	23 WD	>	28 WD	With
3 week items:	18 WD	>	23 WD	>	33 WD	
4 week items:	23 WD	>	28 WD	>	38 WD	Special
5 week items:	28 WD	>	33 WD	>	43 WD	
6 week items:	33 WD	>	38 WD	>	48 WD	Paint
7 week items:	38 WD	>	43 WD	>	53 WD	
8 week items:	43 WD	>	48 WD	>	58 WD	Color
9 week items:	48 WD	>	53 WD	>	63 WD	----
10 week items:	53 WD	>	58 WD	>		

\* Quoted Prices are valid for thirty (30) days only. \* Minimum Billing Charge: \$50.00. \*

\* Please READ and REVIEW your quotation, as this is construed as your CONFIRMATION of all SPECIFICATIONS contained within. \* Contact your salesman for any questions. \*

\* Current order status and tracking numbers are at <https://ecommm.roachconveyors.com> \*

\* Thank you for your request for this quotation.

\* This quote could exceed your current credit limit. You should consider this before  
\* quoting your customer. Before this quote can be entered as an order, prior  
\* arrangements must be made. If you have any questions, please contact our Accounting  
\* Department at (870) 483-7631 ext 1261. \*

Quote Number: Q517620 - 3

Quote Date: 9/29/2018

W W Cannon Inc

C937 AH / AH

Item/ Lead	Qty	Description	L I S T Unit	P R I C I N G Adj.	Extended
---------------	-----	-------------	-----------------	-----------------------	----------

0010 1ea () Model SZ196ZPA 64' Long / 27" BF / 3" RC  
18wd

27" BF / 30" OAW / 3" ROLLER CENTER

30 2' Zones w/ (1) 2' Infeed Zone

31 "Smart Zone"- Pneumatic Actuators & Photo Eye Controlled Zones  
FULL LENGTH BRAKE PADS @ EACH ZONE

"NORMA [PRODUCT SIZE @ LESS THAN 20" LENGTH, IF 36" LENGTH

CONVEYED, PRODUCT WILL TAKE UP (2) ZONES"

CD8-27"-R / 1-7/16" Shaft / Underneath / Left Hand

Speed : 60 fpm

MC - Super "E" - 1 1/2 hp - 230V/460V/3 - 60 FPM

FE4-SZ196ZPA-27"-3" Outfeed Fixed End

FE4-SZ196ZPA-27"-3" Infeed Fixed End

PVC-120-12" Wide Black PVC-120 Belt

8 SM-6-27" Medium Duty Supports

Infeed TOB is 36" Discharge TOB is 36" Incline Angle is 0

16 KB-6 Knee Brace

Smart Zone Power Supply - Discharge

ROACH STANDARD ROACH GREEN COLOR PAINT

PRODUCT: 24" WIDE X 20" LONG (SOLID BOTTOM) @ LESS THAN 50 LBS

(MIN)

PRODUCT: 24" WIDE X 36" LONG (SOLID BOTTOM) @ 50 LBS (MAX)

PRODUCT: 6" WIDE X 6" LONG (SOLID BOTTOM) @ LESS THAN 50 LBS

("MUST BE CONVEYED IN A TOTE TO ACCOMODATE THE ROLLER CENTER")

NOTE: NO GUARD RAIL PROVIDED PER CUSTOMER REQUEST

NOTE: SEE DRAWING

UNIT MARK NO: P-1A

**Quote Number: Q517620 - 3**

Quote Date: 9/29/2018

W W Cannon Inc

C937 AH / AH

Item/ Lead	Qty	Description	L I S T Unit	P R I C I N G Adj.	Extended
---------------	-----	-------------	-----------------	-----------------------	----------

0020 18wd	3ea ( )	Model SZ196ZPA 60' Long / 27" BF / 3" RC			
	28	27" BF / 30" OAW / 3" ROLLER CENTER			
	29	2' Zones w/ (1) 2' Infeed Zone "Smart Zone"- Pneumatic Actuators & Photo Eye Controlled Zones FULL LENGTH BRAKE PADS @ EACH ZONE ""NORMAL [PRODUCT SIZE @ LESS THAN 20" LENGTH, IF 36" LENGTH CONVEYED, PRODUCT WILL TAKE UP (2) ZONES"" CD8-27"-R / 1-7/16" Shaft / Underneath / Left Hand Speed : 60 fpm MC - Super "E" - 1 1/2 hp - 230v/460v/3 - 60 FPM FE4-SZ196ZPA-27"-3" Outfeed Fixed End FE4-SZ196ZPA-27"-3" Infeed Fixed End PVC-120-12" Wide Black PVC-120 Belt SM-6-27" Medium Duty Supports Infeed TOB is 36" Discharge TOB is 36" Incline Angle is 0 KB-6 Knee Brace Smart Zone Power Supply - Discharge ROACH STANDARD ROACH GREEN COLOR PAINT PRODUCT: 24" WIDE X 20" LONG (SOLID BOTTOM) @ LESS THAN 50 LBS (MIN) PRODUCT: 24" WIDE X 36" LONG (SOLID BOTTOM) @ 50 LBS (MAX) PRODUCT: 6" WIDE X 6" LONG (SOLID BOTTOM) @ LESS THAN 50 LBS ("""MUST BE CONVEYED IN A TOTE TO ACCOMODATE THE ROLLER CENTER""") NOTE: NO GUARD RAIL PROVIDED PER CUSTOMER REQUEST NOTE: SEE DRAWING			
	7				
	14				
		UNIT MARK NO: P-1			



**Quote Number: Q517620 - 3**

Quote Date: 9/29/2018

W W Cannon Inc

C937 AH / AH

Item/ Lead	Qty	Description	L I S T Unit	P R I C I N G Adj.	Extended
0030 18wd	1ea	( ) Model 196LRC - 31" BF / 180°			
		31" BF / 34" OAW			
		Left Tangent 1' / Right Tangent 1' / IR - 4'			
		NO MIDDLE TANGENT			
		MC - Super "E" - 3/4 hp - 230v/460v/3 - 60 FPM			
		LEFT HAND (UNDERNEATH) DRIVE			
		ED - 196LRC - 31" / UNDERNEATH / LEFT HAND			
		Speed : 60 fpm			
		PGC 1' Inside 1' Outside on Left Tangent Guards			
		PGC 1' Inside 1' Outside on Right Tangent Guards			
		PGC - 180° - Both Sides Guards			
		SM-6-31" Medium Duty Supports			
		SIM-6 Single Leg Supports			
		INFEEED TOR IS 36" DISCHARGE TOR IS 36"			
		KB-6 Knee Brace			
		ROACH STANDARD ROACH GREEN COLOR PAINT			
		PRODUCT: 24" WIDE X 20" LONG (SOLID BOTTOM) @ LESS THAN 50 LBS			
		(MIN)			
		PRODUCT: 24" WIDE X 36" LONG (SOLID BOTTOM) @ 50 LBS (MAX)			
		PRODUCT: 6" WIDE X 6" LONG (SOLID BOTTOM) @ LESS THAN 50 LBS			
		(""MUST BE CONVEYED IN A TOTE TO ACCOMODATE THE ROLLER CENTER"")			
		NOTE: SEE DRAWING			
		UNIT MARK NO: P-2			

**Quote Number: Q517620 - 3**

Quote Date: 9/29/2018

W W Cannon Inc

C937 AH / AH

Item/ Lead	Qty	Description	L I S T Unit	P R I C I N G Adj.	Extended
---------------	-----	-------------	-----------------	-----------------------	----------

0040 18wd	1ea	( ) MODEL 196LRC - 31" BF / 45/45 DEGREE / "S" CURVE			
--------------	-----	---	--	--	--

- 31" BF / 34" OAW
- 4'0" INSIDE RADIUS
- LEFT TANGENT 1'6"
- 6'3" MIDDLE TANGENT WITH DRIVE MOUNTED ON MIDDLE TANGENT
- LEFT TANGENT 1'6"
- MC - SUPER "E" - 3/4 HP - 230V/460V/3 - 60 FPM
- LEFT HAND (UNDERNEATH) DRIVE LOCATED ON MIDDLE TANGENT (SEE DRAWING)
- ED - 196LRC - 31" / UNDERNEATH / LEFT HAND
- Speed : 60 fpm
- PGC ADJUSTABLE BOTH SIDES GUARDS LOCATED ON INFEED TANGENT, MIDDLE TANGENT, AND DISCHARGE TANGENTS
- PGC - 45° - Both Sides Guards
- SM-6-31" Medium Duty Supports
- SIM-6 Single Leg Supports
- INFEED TOR IS 36" DISCHARGE TOR IS 36"
- KB-6 Knee Brace
- ROACH STANDARD ROACH GREEN COLOR PAINT
- PRODUCT: 24" WIDE X 20" LONG (SOLID BOTTOM) @ LESS THAN 50 LBS (MIN)

PRODUCT: 24" WIDE X 36" LONG (SOLID BOTTOM) @ 50 LBS (MAX)  
 PRODUCT: 6" WIDE X 6" LONG (SOLID BOTTOM) @ LESS THAN 50 LBS  
 ("MUST BE CONVEYED IN A TOTE TO ACCOMMODATE THE ROLLER CENTER")  
 NOTE: SEE DRAWING

UNIT MARK NO: P-3

Quote Number: Q517620 - 3

Quote Date: 9/29/2018

W W Cannon Inc

C937 AH / AH

Item/ Lead	Qty	Description	L I S T Unit	P R I C I N G Adj.	Extended
---------------	-----	-------------	-----------------	-----------------------	----------

0050 18wd	1ea	( ) Model SZ196ZPA 68' Long / 27" BF / 3" RC			
	32	27" BF / 30" OAW / 3" ROLLER CENTER			
	33	2' Zones w/ (1) 2' Infeed Zone "Smart Zone"- Pneumatic Actuators & Photo Eye Controlled Zones FULL LENGTH BRAKE PADS @ EACH ZONE ""NORMAL [PRODUCT SIZE @ LESS THAN 20" LENGTH, IF 36" LENGTH CONVEYED, PRODUCT WILL TAKE UP (2) ZONES"" CD8-27"-R / 1-7/16" Shaft / Underneath / Left Hand Speed : 60 fpm MC - Super "E" - 1 1/2 hp - 230v/460v/3 - 60 FPM FE4-SZ196ZPA-27"-3" Outfeed Fixed End FE4-SZ196ZPA-27"-3" Infeed Fixed End PVC-120-12" Wide Black PVC-120 Belt SM-6-27" Medium Duty Supports Infeed TOB is 36" Discharge TOB is 36" Incline Angle is 0 KB-6 Knee Brace Smart Zone Power Supply - Discharge ROACH STANDARD ROACH GREEN COLOR PAINT PRODUCT: 24" WIDE X 20" LONG (SOLID BOTTOM) @ LESS THAN 50 LBS (MIN) PRODUCT: 24" WIDE X 36" LONG (SOLID BOTTOM) @ 50 LBS (MAX) PRODUCT: 6" WIDE X 6" LONG (SOLID BOTTOM) @ LESS THAN 50 LBS ("""MUST BE CONVEYED IN A TOTE TO ACCOMODATE THE ROLLER CENTER""") NOTE: SEE DRAWING			
	8				
	16				

UNIT MARK NO: P-4A



Quote Number: Q517620 - 3

Quote Date: 9/29/2018

W W Cannon Inc

C937 AH / AH

Item/ Lead	Qty	Description	L I S T Unit	P R I C I N G Adj.	Extended
0060 18wd	2ea	( ) Model SZ196ZPA 70' Long / 27" BF / 3" RC			
		27" BF / 30" OAW / 3" ROLLER CENTER			
33		2' Zones w/ (1) 2' Infeed Zone			
34		"Smart Zone"- Pneumatic Actuators & Photo Eye Controlled Zones FULL LENGTH BRAKE PADS @ EACH ZONE			
		""NORMAL, [PRODUCT SIZE @ LESS THAN 20" LENGTH, IF 36" LENGTH CONVEYED, PRODUCT WILL TAKE UP (2) ZONES""			
		CD8-27"-R / 1-7/16" Shaft / Underneath / Left Hand			
		Speed : 60 fpm			
		MC - Super "E" - 1 1/2 hp - 230v/460v/3 - 60 FPM			
		FE4-SZ196ZPA-27"-3" Outfeed Fixed End			
		FE4-SZ196ZPA-27"-3" Infeed Fixed End			
		PVC-120-12" Wide Black PVC-120 Belt			
8		SM-6-27" Medium Duty Supports			
		Infeed TOB is 36" Discharge TOB is 36" Incline Angle is 0			
16		KB-6 Knee Brace			
		Smart Zone Power Supply - Discharge			
		ROACH STANDARD ROACH GREEN COLOR PAINT			
		PRODUCT: 24" WIDE X 20" LONG (SOLID BOTTOM) @ LESS THAN 50 LBS (MIN)			
		PRODUCT: 24" WIDE X 36" LONG (SOLID BOTTOM) @ 50 LBS (MAX)			
		PRODUCT: 6" WIDE X 6" LONG (SOLID BOTTOM) @ LESS THAN 50 LBS ("""MUST BE CONVEYED IN A TOTE TO ACCOMODATE THE ROLLER CENTER""")			
		NOTE: SEE DRAWING			
		UNIT MARK NO: P-4			

**Quote Number: Q517620 - 3**

Quote Date: 9/29/2018

W W Cannon Inc

C937 AH / AH

Item/ Lead	Qty	Description	L I S T Unit	P R I C I N G Adj.	Extended
0070 24HR	1ea 8	( ) Model 196LRC - 31" BF / 90° 31" BF / 34" OAW Left Tangent 1' / Right Tangent 1' / IR - 4' MC - Super "E" - 1/2 hp - 230v/460v/3 - 60 FPM RIGHT HAND (UNDERNEATH) DRIVE ED - 196LRC - 31" / UNDERNEATH / RIGHT HAND Speed : 60 fpm PGC 1' Inside 1' Outside on Left Tangent Guards PGC 1' Inside 1' Outside on Right Tangent Guards PGC - 90° - Both Sides Guards SM-6-31" Medium Duty Supports SLM-6 Single Leg Supports INFEED TOR IS 36" DISCHARGE TOR IS 36" KB-6 Knee Brace ROACH STANDARD ROACH GREEN COLOR PAINT PRODUCT: 24" WIDE X 20" LONG (SOLID BOTTOM) @ LESS THAN 50 LBS (MIN) PRODUCT: 24" WIDE X 36" LONG (SOLID BOTTOM) @ 50 LBS (MAX) PRODUCT: 6" WIDE X 6" LONG (SOLID BOTTOM) @ LESS THAN 50 LBS ("MUST BE CONVEYED IN A TOTE TO ACCOMODATE THE ROLLER CENTER") NOTE: SEE DRAWING			
UNIT MARK NO: P-5					

Quote Number: Q517620 - 3

Quote Date: 9/29/2018

W W Cannon Inc

C937 AH / AH

Item/ Lead	Qty	Description	L I S T Unit	P R I C I N G Adj.	Extended
0080 18wd	1ea	( ) Model SZ196ZPA 45' Long / 27" BF / 3" RC			
	20	27" BF / 30" OAW / 3" ROLLER CENTER			
	21	2' Zones w/ (1) 3' Infeed Zone "Smart Zone"- Pneumatic Actuators & Photo Eye Controlled Zones FULL LENGTH BRAKE PADS @ EACH ZONE ""NORMAL [PRODUCT SIZE @ LESS THAN 20" LENGTH, IF 36" LENGTH CONVEYED, PRODUCT WILL TAKE UP (2) ZONES"" CD8-27" - R / 1-7/16" SHAFT / UNDERNEATH / RIGHT HAND Speed : 60 fpm MC - Super "E" - 1 hp - 230V/460V/3 - 60 FPM FE4-SZ196ZPA-27"-3" Outfeed Fixed End FE4-SZ196ZPA-27"-3" Infeed Fixed End PVC-120-12" Wide Black PVC-120 Belt SM-6-27" Medium Duty Supports Infeed TOB is 36" Discharge TOB is 36" Incline Angle is 0 KB-6 Knee Brace Smart Zone Power Supply - Discharge ROACH STANDARD ROACH GREEN COLOR PAINT PRODUCT: 24" WIDE X 20" LONG (SOLID BOTTOM) @ LESS THAN 50 LBS (MIN) PRODUCT: 24" WIDE X 36" LONG (SOLID BOTTOM) @ 50 LBS (MAX) PRODUCT: 6" WIDE X 6" LONG (SOLID BOTTOM) @ LESS THAN 50 LBS ("""MUST BE CONVEYED IN A TOTE TO ACCOMMODATE THE ROLLER CENTER""") NOTE: SEE DRAWING			
	6				
	12				
		UNIT MARK NO: P-6			



Quote Number: Q517620 - 3

Quote Date: 9/29/2018

W W Cannon Inc

C937 AH / AH

Item/ Lead	Qty	Description	L I S T Unit	P R I C I N G Adj.	Extended
0090 24HR	1ea	( ) Model 196LRC - 31" BF / 90°			
		31" BF / 34" OAW			
		Left Tangent 1' / Right Tangent 1' / IR - 4'			
		MC - Super "E" - 1/2 hp - 230V/460V/3 - 60 FPM			
		LEFT HAND (UNDERNEATH) DRIVE			
		ED - 196LRC - 31" / UNDERNEATH / LEFT HAND			
		Speed : 60 fpm			
		PGC 1' Inside 1' Outside on Left Tangent Guards			
		PGC 1' Inside 1' Outside on Right Tangent Guards			
		PGC - 90° - Both Sides Guards			
	3	SM-6-31" Medium Duty Supports			
	2	SIM-6 Single Leg Supports			
		INFEEED TOR IS 36" DISCHARGE TOR IS 36"			
	8	KB-6 Knee Brace			
		ROACH STANDARD ROACH GREEN COLOR PAINT			
		PRODUCT: 24" WIDE X 20" LONG (SOLID BOTTOM) @ LESS THAN 50 LBS (MIN)			
		PRODUCT: 24" WIDE X 36" LONG (SOLID BOTTOM) @ 50 LBS (MAX)			
		PRODUCT: 6" WIDE X 6" LONG (SOLID BOTTOM) @ LESS THAN 50 LBS			
		("MUST BE CONVEYED IN A TOTE TO ACCOMODATE THE ROLLER CENTER")			
		NOTE: SEE DRAWING			
		UNIT MARK NO: P-7			

Quote Number: Q517620 - 3

Quote Date: 9/29/2018

W W Cannon Inc

C937 AH / AH

Item/ Lead	Qty	Description	L I S T Unit	P R I C I N G Adj.	Extended
---------------	-----	-------------	-----------------	-----------------------	----------

0100 18wd	1ea ( )	MODEL SZ196ZPA 8'0" LONG / 27" BF / 3" RC			
	2	27" BF / 30" OAW / 3" ROLLER CENTER			
	2	2' ZONES W/ (1) 2' INFEED ZONE			
	3	"Smart Zone"- Pneumatic Actuators & Photo Eye Controlled Zones FULL LENGTH BRAKE PADS @ EACH ZONE ""NORMAL [PRODUCT SIZE @ LESS THAN 20" LENGTH, IF 36" LENGTH CONVEYED, PRODUCT WILL TAKE UP (2) ZONES"" CD4-27" - R / 1-3/16" SHAFT / UNDERNEATH / RIGHT HAND Speed : 60 fpm MC - Super "E" - 1/2 hp - 230v/460v/3 - 60 FPM FE4-SZ196ZPA-27"-3" Outfeed Fixed End FE4-SZ196ZPA-27"-3" Infeed Fixed End PVC-120-6" Wide Black PVC-120 Belt SM-6-27" Medium Duty Supports Infeed TOB is 36" Discharge TOB is 36" Incline Angle is 0 KB-6 Knee Brace Smart Zone Power Supply - Discharge ROACH STANDARD ROACH GREEN COLOR PAINT PRODUCT: 24" WIDE X 20" LONG (SOLID BOTTOM) @ LESS THAN 50 LBS (MIN) PRODUCT: 24" WIDE X 36" LONG (SOLID BOTTOM) @ 50 LBS (MAX) PRODUCT: 6" WIDE X 6" LONG (SOLID BOTTOM) @ LESS THAN 50 LBS ("MUST BE CONVEYED IN A TOTE TO ACCOMMODATE THE ROLLER CENTER") NOTE: SEE DRAWING			
	2				
	4				

UNIT MARK NO: P-8





