

# FS1270 SPECIFICATIONS

## Capacities:

	Inch	Metric
Max. External Gear (PD)	50"	1270mm
Min. External Gear (Root Dia.)	7.08" minus cutter OD	180mm minus cutter OD
Max. Internal Gear (Min. Dia.)	51.18" minus 2 x rim thickness (vert. lift)	1300mm
Min. Internal Gear (Min. Dia.)	7.28" plus cutter OD	185mm plus cutter OD
Max. Diametral Pitch (Spur and Helical)	2.0	12.7 MOD
Face Width, Max. - FS1270-200	8.00"	203mm
- FS1270-300	12.00"	304mm
Max. Helix Angle, based on 178mm (7") PD cutter	40°	40°
Work Index Wheel Dia.	40.00"	1016mm
Load on Worktable, Max.	11,000 lb	5,000 kg
Max. Swing Dia. = $45.67" + 1.45 \times (CD - 3.54")$ = $1160mm + 1.45 \times (CD - 90mm)$		

**NOTE:** Capacities are for vertical part loading and removal with 230mm (9") OD cutter.

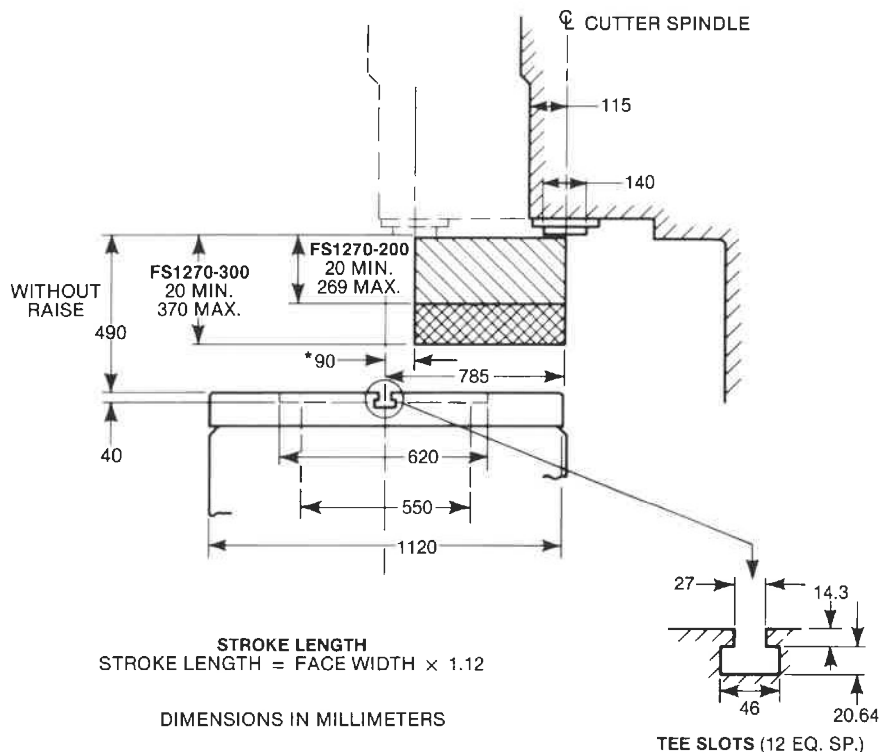
## Dimensions:

		Inch	Metric
Max. Overall Length		226"	5740mm
Max. Overall Height - FS1270-200		119"	3023mm
FS1270-300		138.75"	3525mm
Max. Overall Depth		90"	2286mm
Total Space Required for Hydraulic Unit and Open Doors	Length:	226"	5740mm
	Depth:	109"	2769mm

## Weights:

Net Weight with Motors - FS1270-200	26,000 lb	11,794 kg
FS1270-300	37,000 lb	16,783 kg
Machine Crated for Domestic Use - FS1270-200	31,000 lb	14,062 kg
FS1270-300	42,000 lb	19,051 kg
Machine Boxed for Export - FS1270-200	33,000 lb	14,969 kg
FS1270-300	44,000 lb	19,958 kg

## DIMENSIONS & WORKING LIMITS



\* FOR EXCEPTIONAL CONDITIONS THIS DIMENSION CAN BE CHANGED TO 40MM.

## STANDARD FEATURES

- Electronic Index Drives
- Electronic Stroke Position
- Automatic Cutter Positioning at Top of Stroke
- Cutter Spindle Elevating
- Automatic Stroke Length Adjustment
- Dual Worm Worktable Drive for Backlash Elimination
- Infinitely Variable Infeed from 0.001mm (.00004") to 0.50mm (.020")/Stroke
- Rapid Traverse of Upright: 1900 mm/min. (75"/min.)
- Switchable Metric/Inch Operation
- Direct MM/Stroke or Inch/Stroke Cutting Data Entry
- 4 Cuts
- Involute/Non-Involute Cutting
- External/Internal Cutting

## OPTIONAL EQUIPMENT

- Expandable Memory
- Magnetic Chip Conveyor
- Quick Change Cutter Mechanism
- Automatic Fixture Clamping - Quick Change Fixtures
- Uninterruptable Power Supply

**FELLOWS**

**FELLOWS CORPORATION**

BOX 851, SPRINGFIELD, VT 05156-0851 USA

TEL: 802-886-8333, TWX: 710-227-1701, FAX: 802-886-2700

**NOTE:** The information included herein was correct at the time of publication. However, it is our policy to continually improve our product to insure ever better performance. Consequently, current Fellows' machines and products may incorporate modifications not shown or described in these pages. Machine illustrations in this publication may be shown with available guarding removed to clarify features.