

3-DAY LIVE WEBCAST **ONLINE ONLY** AUCTION



MINSTER E2-300 HEVISTAMPER
300-TON SS PRESS

Full Facility Closure of



**WESTERN
FORGE**

**A DIVISION OF
IDEAL INDUSTRIES INC.**

A LEADING AMERICAN HAND TOOL MANUFACTURER

FEATURING: Extrusion Lines,
Plastics Support, Forging Dept.,
Plating & Heat Treat, E-Coat
Line, Profilers, Screw
Machines, Robotic Finishing,
Broaches, Rotary Transfer
Machines, Metrology & QA,
Presses, Machine Tools, Factory
Support & Scrap Opportunity

Day 1 Sale Date:
Wednesday, August 19
at 9:00 AM MT

Day 2 Sale Date:
Thursday, August 20
at 9:00 AM MT

Location: 4607 Forge Rd.,
Colorado Springs,
Colorado 80907

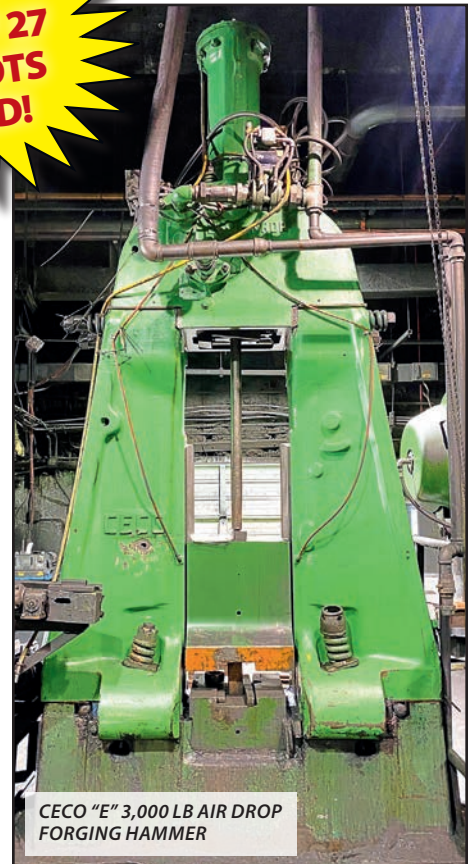
Inspection: Mon., August 17 & Tues., August 18, By Appointment

2016



BLAST CLEANING TECHNOLOGIES M14-D TUMBLE BLAST MACHINE

**DAY 3-
AUGUST 27
NEW LOTS
ADDED!**



CECO "E" 3,000 LB AIR DROP
FORGING HAMMER



**PERFECTION
Industrial Sales**

Perfection Industrial Sales
ph +1-847-545-6374 • fax +1-847-427-8884
www.perfectionindustrial.com

Pre-Auction Offers Invited on Major Assets

Webcast Bidding Available Through

BidSpotter.com

Sale is Being Held in Conjunction With:



Hilco
Industrial

www.hilcoind.com • ph 877.37.hilco

EXTRUSION LINES, PLASTIC SUPPORT EQUIPMENT



BERLYN 1-1/2 1.5\"/>



PRODEX TM350-24 3.5\"/>



HPM 3.5TM 35-24 3.5\"/>



FARRIS C550VT CATERPULLER



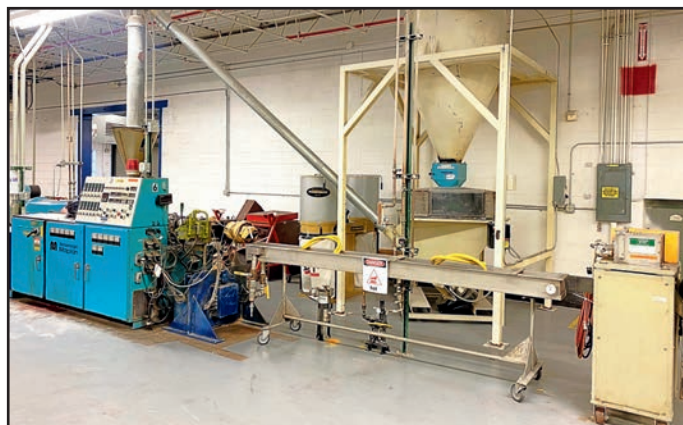
CONAIR GATTO HS-2-4/24 FLYING CUT-OFF



BERLYN 1-1/2 1.5\"/>



VIEW OF STAINLESS STEEL COOLING TROUGHS



REGRIND/PELLETIZER SYSTEM



MAREN 111 297 15 HP BALER

BUILDING #3 - SCREWDRIVER MFG.

EXTRUSION LINES

LINE 1: PRODEX TM35-24 3.5\"/>

LINE 2: PRODEX TM35 TORQUEMASTER 3.5\"/>

LINE 3: PRODEX TM350-24 3.5\"/>

LINE 4: HPM 3.5TM 35-24 3.5\"/>

PLEASE NOTE: Each of the (4) Extrusion Lines Will Be Offered as Both a Bulk Bid for the Respective Production Line and Piecemeal for the Individual Components. See the Lot Catalog for Details.

PLASTIC SUPPORT EQUIPMENT

REGRIND/PELLETIZER SYSTEM C/W CUMBERLAND 20 GRAN 3 KN GRINDER, s/n 65550-748, w/Prater VS1-13-2E Vibratory Conveyor, s/n 1437, Power Belt Conveyor w/Blower System, American Maplan DSK 62 Extruder, s/n 130309, SS Cooling Trough, Conair Jetro 304 Pelletizer, s/n 6-042390, LaRos Cool-Veyor

PLEASE NOTE: The Regrind/Pelletizer System Will Be Offered as Both a Bulk Bid for the Complete System and Piecemeal for the Individual Components. See the Lot Catalog for Details.

ALSO: (2) MAREN 111 297 15 HP BALERS, s/n 995068, 978142, **CONAIR FRANKLIN 610013K1 MIXING SYSTEM,** s/n A40279, w/(2) Conair Hoppers Loaders, **UNA-DYN FEED SYSTEM C/W DHD-8 HOPPER/DRYER,** s/n 877204-R91, **76 CYCLONE,** s/n 7677530, **800 LB HOPPER, CONAIR W300 CAROUSEL PLUS DRYER,** s/n 228231, w/Conair CH39 Hopper, s/n 228224, **UNA-DYN AM75 DEHUMIDIFIER,** s/n 7572135, **(2) DIXIE AIR SYSTEMS 16310 DUST COLLECTING SYSTEMS**

View our current auction schedule at www.perfectionindustrial.com

PROFILATORS, METAL PREPARATION, SCREW MACHINES & DOWEL MACHINE

PROFILATORS

1998 LASCHET PARTNER LP-EF-40-100H PROFILATOR, s/n 9805125

WERA RM60-S 15 KW PROFILATOR, s/n 4045285, w/Winger

(3) WERA RM60-S 12 KW PROFILATORS, s/n 4051686 (w/Winger), 4051586, 4047285

LASCHET PARTNER LP-25 PROFILATOR, s/n 3005-HP100



6 AVAILABLE

VIEW OF PROFILATORS



MABCO SYSTEMS NICKEL PLATING LINE



ATMOSPHERE FURNACE CO. HEAT TREAT SYSTEM



14 AVAILABLE

VIEW OF BROWN & SHARPE SCREW MACHINES



LASCHET PARTNER LP-EF-40-100H PROFILATOR

METAL PREPARATION

MABCO SYSTEMS NICKEL PLATING LINE, s/n MS2000-13-1, w/Dual Hoist System, Lanco Clarifier System, Sludge Dryer Press w/Tank

CUSTOM VAPOR POLISH TANK SYSTEM, w/2,000-Gallon and Approx. 1,500-Gallon SS Acetone/Acetate Tanks

FINISH THOMPSON INC LS55 E LITTLE STILL, s/n 13698B13

ATMOSPHERE FURNACE CO. MESH BELT HEAT TREAT SYSTEM, s/n 61837/61835, w/ Rocknel 33" Mesh Belt, 1,800 Deg. F Max. Temp, 250 Deg. F Quench High Limit Set Point, 180 Deg. F Quench Temp Controller Set Point, 3.22 FPM Conveyor Speed, 1,200 CFM Endothermic Gas, w/AFC Wash and Draw System, s/n 065040004, 1000 Deg. F, 210 kW Input/Hour

AFC-PIFCO ATMOSPHERE FURNACE, s/n 61817

(2) PANGBORN 6GN-6R ROTOBLAST RUBBER BELT BARREL BLAST CLEANING SYSTEMS, s/n S-931077, S-920766

ROTO-FINISH EXTENDED RANGE SERIES SPIRATRON VIBRATORY FINISHER, s/n 5583

RAMPE TUMBLER FINISHER

SCREW MACHINES & DOWEL MACHINE

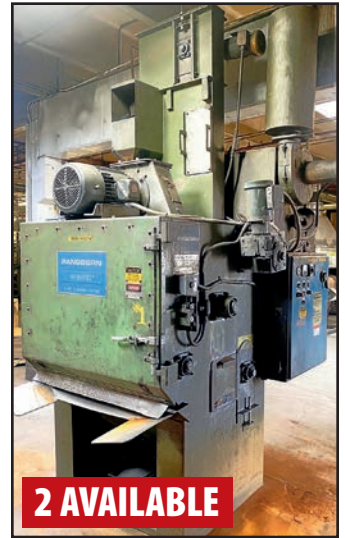
(14) BROWN & SHARPE ULTRAMATIC R/S SCREW MACHINES, See Catalog for s/n, w/Lipe-Rollway 156-AML Automatic Bar Feed

(8) DUMORE SERIES 22 AUTOMATIC DRILL UNITS

DUMORE SERIES 28 AUTOMATIC DRILL-N-TAP UNIT, s/n 8532

HAWKER 2000 DOWEL MACHINE, s/n 722027, 1/2-2" Stock Dia., 14" and Up Stock Length, 75-250 FPM

To discuss your requirements for an auction, please call Perfection Industrial **+1-847-545-6374**



2 AVAILABLE

PANGBORN 6GN-6R ROTOBLAST TUMBLE BLAST MACHINE



ROTO-FINISH VIBRATORY FINISHER



VIEW OF BROWN & SHARPE SPARE PARTS



9 AVAILABLE

VIEW OF DUMORE AUTO DRILL UNITS

MISCELLANEOUS MACHINERY & EQUIPMENT, FACTORY SUPPORT EQUIPMENT

4 AVAILABLE



BLASDEL ENTERPRISES DIAL TEMP PAINT MACHINE LINES



KOHLER POWER SYSTEMS 20RZ LP GENERATOR

19 KW

Day 1 Sale Date: Wednesday, August 19 at 9:00 AM MT

BUILDING #3 – SCREWDRIVER MFG., CONT.

MISCELLANEOUS MACHINERY & EQUIPMENT

(4) **BLASDEL ENTERPRISES DIAL TEMP PAINT MACHINE LINES**, w/36-Positions, Conveyor, Dayton DC Speed Controls, Blower Heaters, (6) **SCREWDRIVER STAMP AND ASSEMBLY LINES**, w/Triple Stamp, Rotate, Rotary Loader and Blade Insertion, Infeed Conveyors, (3) **TRIPLE HEAD STAMP MACHINES**, (3) **ABSOLUTE AB ODR-3000 OIL/SMOKE/MIST COLLECTION SYSTEMS**, s/n 20070122, 20070117, 20070015, 2,350 CFM, 10 HP, 3,510 RPM, **BOBCAT 225 8,500-WATT GENERATOR/WELDER**, s/n LA243171, **DENISON MULTIPRESS FG8 8-TON HYDRAULIC PRESS**, s/n 11566-S06-T9, **AVEY BMA-6 4-HEAD GANG DRILL**, s/n 34573, w/(2) Ettco Heads, **HARIG 6" X 12" HAND FEED SURFACE GRINDER**, s/n R415586, **REID 6" X 18" HAND FEED SURFACE GRINDER**, s/n 15886, **ENGELBERG 8" 7.5 HP HEAVY DUTY SANDER/GRINDER**, **WILTON 2402 DRILL PRESS**, s/n 3064/906, **GRIEVE 323 ELECTRIC OVEN**, s/n 311165, 4.4 kW, 350 Deg. F Max. Temp, **DAKE SHOP PRESS**, **T-DRILL BLADE STRAIGHTENER**



(2) INGERSOLL RAND NVC1200A400 REFRIGERATED AIR DRYERS



6 AVAILABLE

SCREWDRIVER STAMP AND ASSEMBLY LINES



INGERSOLL RAND SSR-EPE150-25 AIR COMPRESSOR



150 HP

LANCO CLARIFIER



VIEW OF MATERIAL HANDLING



VIEW OF CABINETS AND JOB BOXES



VIEW OF PALLET RACKING



VIEW OF BEARINGS



VIEW OF STORES

FACTORY SUPPORT EQUIPMENT

KOHLER POWER SYSTEMS 100RZG GAS GENERATOR, s/n 2155697, w/90 kW, 113 KVA

KOHLER POWER SYSTEMS 20RZ LP GENERATOR, s/n 2124368, w/19 kW, 19 KVA

INGERSOLL RAND IRN200H-2S 200 HP ROTARY SCREW AIR COMPRESSOR, s/n NFF0486U07264

INGERSOLL RAND R150IU-A125 200 HP ROTARY SCREW AIR COMPRESSOR, s/n HE2196U08144

INGERSOLL RAND SSR-EPE150-25 150 HP ROTARY SCREW AIR COMPRESSOR, s/n FF2081U00366

(2) INGERSOLL RAND NVC1200A400 REFRIGERATED AIR DRYERS, s/n 285168 and 287757

BAC VI0-024-EM COOLING TOWER

ALSO: RAMPACTOR 4036HT DRUM CRUSHER, s/n 04995349, **LANDA NHP4-30024C 3000 PSI LPG PRESSURE WASH SYSTEM**, s/n P0106-115924, **STRONGHOLD CABINETS**, **KNAACK GANG BOXES**, **TOOL BOXES**, **ROLLING GANTRIES**, **PALLET RACKING**, **ELECTRIC PALLET JACKS**, **PALLET JACKS**, **LADDERS**, **SAFETY LADDERS**, **LARGE QUANTITY OF STEEL STOCK**, **BALER**, **SPILL KITS AND PLATFORMS**, **STOCK CARTS**, **SEALED AIR PACKAGING SYSTEMS**, **HARTZELL 412-38-FA03 TRUE GDM-41 REFRIGERATOR**, **HOSHIZAKI DCM-500BAH-OS ICE MAKER**, **MAINTENANCE CRIB INCLUDING LARGE ASSORTMENT OF SWITCHES**, **CONTACTORS**, **BREAKER BOXES**, **FUSES**, **BELTS**, **BOARDS**, **MOTORS**, **BEARINGS**, **VALVES**, **HOSES**, **BALLASTS**, **LIGHTS**, **CHAIN**, **GEARS**, **CYLINDERS**, **FILTERS**, **SPROCKETS**, **CAMS**, **SOLENOIDS AND MORE**



VIEW OF BAR STOCK AND CANTILEVER RACKING

DIE FORGERS & HAMMERS

BUILDING #1 – FORGE SHOP



CHAMBERSBURG 12 CDF DIE FORGER

DIE FORGERS & HAMMERS

CHAMBERSBURG NO.14 3,000 LB DIE FORGER, s/n 2948-L, w/30.5" x 23" Anvil Capacity, 20.5" x 24" Ram, Allen Bradley PanelView 550 PLC Control, (#2698, Hammer #12)

CHAMBERSBURG 12 CDF 3,000 LB DIE FORGER CONVERSION, s/n 2942-L, w/27.25" x 18.75" Anvil Capacity, 23.75" x 21" Ram, Allen Bradley PanelView 550 PLC Control, (Hammer #6)

CECO "E" 3,000 LB AIR DROP FORGING HAMMER, s/n 2511-L, w/30" x 23" Anvil Capacity, 23" x 26.5", Updated Sensors and Control, (#328, Hammer #7)



CECO "E" AIR DROP FORGING HAMMERS (ALSO SHOWN: INDUCTION SYSTEMS)



CECO 15CDE AIR DROP FORGING HAMMER

(2) CECO "E" 2,500 LB AIR DROP FORGING HAMMERS, s/n 2696-L (#330, Hammer #8), 2354-L (Hammer #5), w/27.25" x 19" Anvil Capacity, 21" x 24" Ram

CECO 15CDE 1,500 LB AIR DROP FORGING HAMMER, s/n 959-L, w/23.5" x 17" Anvil Capacity, 20.75" x 16" Ram, (Hammer #4)

(2) CECO 1,500 LB AIR DROP FORGING HAMMERS, s/n NA, w/23" x 17" Anvil Capacity, 21" x 16" Ram, (#326, Hammer #1), (#325, Hammer #3)

CECO 1,500 LB AIR DROP FORGING HAMMER, s/n NA, w/23.25" x 16" Anvil Capacity, 16" x 21" Ram, (#329, Hammer #9)

ALSO: SPARE HAMMER BASES, COLUMNS, CROWNS/STACKS, ANVILS, CANTILEVER RACKING W/HUGE SELECTION OF BAR STOCK FROM 11/16" TO 2-1/8" DIA. X 20"L., LARGE ASSORTMENT OF DIES AND MORE



CECO AIR DROP FORGING HAMMER



CECO AIR DROP FORGING HAMMER

Inspection of Assets in the Sale is By Appointment Only. Anyone showing up to the site without a scheduled appointment will be denied entry. All coming on site for inspection day must sign a liability waiver and must be wearing long pants, close-toed shoes, and facemask. Call our office at +1-847-545-6374 to schedule your inspection.

INDUCTION SYSTEMS, FORGING REDUCER ROLLS & OBI PRESSES, MISCELLANEOUS MACHINERY, CHISEL MACHINING CELL, MISCELLANEOUS EQUIPMENT

2015



ESC INDUCTION IGBT800-1-3 800 KW INDUCTION HEATING SYSTEM



AMERICAN INDUCTION HEATING PSCS-400-3 400 KW INDUCTION HEATER

BONE FRONTIER TS5L350-10 350 KW INDUCTION HEATING SYSTEM



38 AVAILABLE

INDUCTION HEATING COILS



AMERICAN INDUCTION HEATING 250 KW INDUCTION HEATING SYSTEM

Day 1 Sale Date:

BUILDING #1 – FORGE SHOP, CONTINUED

INDUCTION SYSTEMS

2015 ESC INDUCTION IGBT800-1-3 800 KW INDUCTION HEATING SYSTEM, s/n 8001Y1524

AMERICAN INDUCTION HEATING PSCS-400-3 400 KW INDUCTION HEATER, s/n 25661-8-95

AMERICAN INDUCTION HEATING EI-400-3 400 KW INDUCTION HEATING SYSTEM, s/n 9432-01-382

BONE FRONTIER TS5L350-10 350 KW INDUCTION HEATING SYSTEM, s/n 655

AMERICAN INDUCTION HEATING 250 KW INDUCTION HEATING SYSTEM, s/n 24682-894

(2) PILLAR MKII 250 KW INDUCTION HEATING SYSTEMS, s/n 3076 and NA

BONE FRONTIER TS5250-10 250 KW INDUCTION HEATING SYSTEM, s/n 592

BONE FRONTIER LSS250WF 250 KW INDUCTION HEATING SYSTEM, s/n 592L

(38) INDUCTION HEATING COILS



Inspection: By Appointment Only



5 AVAILABLE

AJAX FORGING REDUCER ROLL



BLISS C-110 110-TON OBI PRESS

FORGING REDUCER ROLLS & OBI PRESSES

AJAX NO. 1 FORGING REDUCER ROLL, s/n 4641

(4) AJAX NO. 0 FORGING REDUCER ROLLS, s/n 4946, 4677, 4626, 4495

BLISS C-110 110-TON OBI PRESS, s/n H60015

(4) BLISS C-60 OBI PRESSES, s/n H61810, H68893, H62941, H62108

(2) BLISS C-45 OBI PRESSES, s/n H65657, H55779

NIAGARA A45 OBI PRESS, s/n 44412

MISCELLANEOUS MACHINERY

GEORGE FISHER 3BB SHOT BLAST, s/n 2804, 7-1/2 HP, AMERICAN LINCOLN 576-500 POWER SWEEPER, s/n 630543, OKAMOTO 6 X 12 SURFACE GRINDER, PORTABLE HYDRAULIC HOIST W/DAYTON 1,000 LB ELECTRIC HOIST, WESCO DH-3438 DIE CART, GREASE PUMPS, LADDERS, LISTA CABINETS, PEDESTAL GRINDERS, DRILL PRESS, AND SANDERS

LARGE SCRAP OPPORTUNITY

CHISEL MFG. BUILDING

CHISEL MACHINING CELL

CHISEL CELL C/W (6) 2001 BERGER BG1 CNC/R BEVEL GRINDING MACHINES, 2001 Rofin-Sinar Power-line 50 D Laser, s/n 610136, Dimplex 1001AC Chiller, s/n 07K12347-01, Tower Transfer System w/CNC Control

SWISS SCREW MACHINES

(4) CITIZEN CINCOM G32 SWISS SCREW MACHINES, s/n 2415, 2426, 2465, 2565, w/FMB Turbo Bar Loader

ACME GRIDLEY RA-6 SCREW MACHINE, s/n 71758-B, w/Bar Loader

ACME GRIDLEY RB-6 SCREW MACHINE, s/n 0376-A, w/Bar Loader

MISCELLANEOUS EQUIPMENT

NIAGARA A35 35-TON OBI PRESS, s/n 44684, (2) STEEL STORAGE SYSTEMS 3T-2G-24X13K-20 STOCK RACK, 5,600 Lb Arm Capacity, STEEL STORAGE SYSTEMS 2T-2G-24X12R-24 STOCK RACK, 5,600 Lb Arm Capacity, CALDWELL 5-TON SPREADER BAR, 12' X 15' MEZZANINE

E-COAT LINE, MISCELLANEOUS EQUIPMENT ROBOTIC FINISHING MACHINES, BROACHING MACHINES

Wednesday, August 19 at 9:00 AM MT



HURRICANE SYSTEMS 5024 PRE-WASH/WASH/RINSE/BLOW-OFF LINE



CLEARCLAD
26-STATION
E-COAT LINE



ALL AMERICAN
SPC814E
PAD PRINTER

BUILDING #4 – E-COAT

2003 CLEARCLAD 26-STATION E-COAT LINE, s/n NA, Allen Bradley PanelView 300 PLC Control

HURRICANE SYSTEMS 5024 PRE-WASH/WASH/RINSE/BLOW-OFF LINE, s/n 43951, Allen-Bradley PanelView 600 PLC Control

2018 ALL AMERICAN SPC814E PAD PRINTER, s/n SGH1684

TRANS TECH DUOSEAL 90 PAD PRINTER, s/n TDS9090590010

(3) MONODE 450E DIGITAL ETCHING SYSTEMS

3-DAY LIVE WEBCAST ONLINE ONLY

**DAY 3-
AUGUST 27
NEW LOTS
ADDED!**

Location: 4607 Forge Road, Colorado Springs, Colorado 80907

Inspection: Monday, August 17 & Tuesday, August 18, By Appointment Only

BUILDING #2

Day 2 Sale Date: Thursday, August 20 at 9:00 AM MT



ACT
RFC-50.2-T
ROBOTIC
FINISHING
CELL

YASKAWA
MOTOMAN
MH 50
ROBOT



ROBOTIC FINISHING MACHINES

(2) 2014 ACT RFC-50.2-T ROBOTIC FINISHING CELLS, s/n 12263, w/2011 Yaskawa Motoman MH 50 Robot, s/n RH9640-1709-4, 12264, w/ Type YR-MH00050-A00, 50 kg Payload, Pendant Control, w/(2) 4" Belt/Grinders/Polishers

2013 ACT FRC-50.2-T ROBOTIC FINISHING CELL, s/n 12262, 2011/12 Yaskawa Motoman MH50 Robot, s/n S1V368-1-3, Type YR-MH00050-A00, 50 kg Payload, Pendant Control, w/(2) 4" Belt Grinders/Polishers

BROACHING MACHINES

DETROIT BROACH VTT20-66 20-TON X 66" DOUBLE RAM BROACH, s/n 66238, w/Allen Bradley PanelView 1000 PLC

(2) FOOTE-BURT BROACH CO 15L 15-TON X 110" HORIZONTAL BROACHES, s/n 17510-55, 25755

DETROIT BROACH 15-TON X 66" DOUBLE RAM BROACH, s/n M-735035, w/Allen Bradley 900 PLC



ACT FRC-50.2-T ROBOTIC FINISHING CELL



DETROIT BROACH
VTT-15-66 15-TON X 66"
DOUBLE RAM
VERTICAL BROACH



LAPOINTE 15-TON X 66"
DOUBLE RAM
VERTICAL BROACH

LAPOINTE 15-TON X 66" DOUBLE RAM BROACH, s/n 50071, w/Allen Bradley PanelView 1000 PLC

(4) DETROIT BROACH VTT-15-66 15-TON X 66" DOUBLE RAM BROACHES, s/n 92728, M-9800, M-66206, 70034,

(2) DETROIT BROACH VTT-10-66 10-TON X 66" DOUBLE RAM BROACHES, s/n 74139, M-61859

DETROIT BROACH 5-45-H 5-TON X 45" HORIZONTAL BROACH, s/n M-67182

ROTARY TRANSFER MACHINES, MISCELLANEOUS MACHINERY & EQUIPMENT

BUILDING #2, CONTINUED

To avoid any public gatherings, there will be no onsite participation in this Webcast-only auction. All bidders will be able to place live, real-time bids using a desktop or mobile device (the exact same way Webcast bidders have participated in previous sales) and can listen live in real-time to the auctioneer's audio stream.

ROTARY TRANSFER MACHINES

(2) **KINGSBURY 205 ROTARY TRANSFER MACHINES**, s/n B-12799 (84"), B-12099 (60"), w/Allen Bradley PanelView 1000 PLC, 4-Mill Station

(2) **KINGSBURY 202 60" ROTARY TRANSFER MACHINES**, s/n BT-12379, BT-130060, w/Allen Bradley PanelView 1000 PLC, 4-Mill Station

KINGSBURY 22 68" ROTARY TRANSFER MACHINE, s/n B-12380, w/Allen Bradley PanelView 1000 PLC, 4-Mill Station



KINGSBURY ROTARY TRANSFER MACHINE

Day 2 Sale Date: Thursday, August 20 at 9:00 AM MT

MISCELLANEOUS MACHINERY & EQUIPMENT



ENGEL ES600/200VSH VERTICAL INJECTION MOLDER



THERMAL CARE NQA05 CHILLER



VIEW OF TUMBLE BLAST MACHINES



WHEELABRATOR 7 SUPER SHOT TUMBLE BLAST MACHINE



WHEELABRATOR TBR/S6 TUMBLE BLAST MACHINE



OKAMOTO PFG-618 SURFACE GRINDER



BLANCHARD NO. 18-42 ROTARY SURFACE GRINDER



KENT KGS-410AHD 16" X 40" HYDRAULIC SURFACE GRINDER



CINCINNATI MILACRON MONOSET T&C GRINDER



(2) VERTICAL BELT GRINDERS

ENGEL ES600/200VSH 200-TON VERTICAL INJECTION MOLDING MACHINE, s/n 5069-200-92, CINCINNATI MILACRON DD-60 HOPPER DRYER, s/n 3933A02-93-12, THERMAL CARE NQA05 CHILLER, s/n IE831011808, NOVATEC/MAGUIRE MGF-4-ST GRAVIMETRIC FEEDER, s/n STD42547, (3) WHEELABRATOR TBR/S6 TUMBLE BLAST MACHINES, s/n A140178, A131619, A135084, WHEELABRATOR 7 SUPER SHOT TUMBLE BLAST MACHINE, s/n A124832, w/Hydraulic Pivot Loader, BLANCHARD NO. 18-42 ROTARY SURFACE GRINDER, s/n 9125, KENT KGS-410AHD 16" X 40" HYDRAULIC SURFACE GRINDER, s/n 880355, (2) OKAMOTO PFG-618 SURFACE GRINDERS, s/n 8507U, 1174 w/Sony Magnescale LH11 DRO, OPTIDRESS GRINDING ATTACHMENT, (3) MAKINO C-40 TOOL AND CUTTER GRINDERS, s/n E53-8020, E53-8043, E50-7155, CINCINNATI MILACRON MONOSET TOOL AND CUTTER GRINDER, s/n 4898A0181-0073, HUDSON LAPOINTE SIZE 60 GRINDER, s/n 56155, w/30" x 4" OS Walker Magnetic Chuck, 77" x 8.5" Table, THOMPSON #12 BROACH SHARPENER, s/n E3237, w/9" x 72" Table, CINCINNATI OE 16" SERIES VERTICAL HYDRO-TEL MILLING MACHINE, s/n NA, w/28" x 83" Working Surface, NEWALL 3-AXIS DRO, SUPREME LG-26160 26" X 160" ENGINE LATHE, s/n BF8409-004, w/Acu-Rite Master TP DRO, CLAUSING COLCHESTER 17" X 80" ENGINE LATHE, s/n 7/0220/13896, w/NEWALL C80 DRO, RAMBAUDI MINIRAM 3-SPINDLE MILLING MACHINE, s/n 82568, w/550 PLC, (3) LAGUN FTV-2 3 HP VERTICAL MILLS, s/n 45931, 44065, 42735, w/Newall DRO, BRIDGEPORT SERIES I 2 HP VERTICAL MILL, s/n 234365, Protrak MX2 Control, WILTON 2340 DRILL PRESS, s/n 430519, 12-1/2" x 13" Table, 12" Throat, 0-2,520 RPM, JET J-A3816 DRILL PRESS, s/n 15031929, RIDGID DP15000 DRILL PRESS, s/n 00085E0028, (2) BALTEC RN33 RIVET MACHINES, s/n 71123, 70023, (2) BLISS C-45 45-TON OBI PRESSES, s/n H64410, H64411

View our current auction schedule at www.perfectionindustrial.com

PLATING & HEAT TREAT, FACTORY SUPPORT EQUIPMENT



HUDSON LAPOINTE SIZE 60 GRINDER



7-STATION BLACK OXIDE BARREL PLATING LINE



SUPREME ENGINE LATHE



INGERSOLL RAND SSR-XFE300 300 HP ROTARY SCREW AIR COMPRESSOR



VIEW OF MILLS



(2) DOW PRS304824 HEAT TREAT FURNACES



VIEW OF MOTORS

Location: 4607 Forge Road,
Colorado Springs, CO 80907
Inspection: Monday, August
17 & Tuesday, August 18,
By Appointment Only

**Day 2 Sale Date: Thursday,
August 20 at 9:00 AM MT**

PLATING & HEAT TREAT

7-STATION BLACK OXIDE BARREL PLATING LINE, Alkaline Prep-Rinse, Presto Prep-Rinse-Presto Black-Rinse, w/ Desco Spin Dryer System

(2) DOW PRS304824 HEAT TREAT FURNACES, s/n PRS-107-105, NA, 105 kW, 13 HP, 30" x 48" x 24, w/AFC-Holcroft 1500 CD Heater Washer

(2) DOW FURNACE BX243616 DRAW FURNACES, s/n DFG-20 and DFG28

AFC-HOLCROFT UBW24X36X24-G HEATER WASHER, s/n s/n 62064

FACTORY SUPPORT EQUIPMENT

INGERSOLL RAND SSR-XFE350-2S 350 HP ROTARY SCREW AIR COMPRESSOR, s/n EE127CU95345

INGERSOLL RAND SSR-XFE300 300 HP ROTARY SCREW AIR COMPRESSOR, s/n E1139U92

SULLAIR 32/25-300L ACAC 300 HP ROTARY SCREW AIR COMPRESSOR, s/n 003-79649

INGERSOLL RAND SSR-XFE450-2S 450 HP ROTARY SCREW AIR COMPRESSOR, s/n EE1774U99035 (Needs Repair)

(2) INGERSOLL RAND SSR-XFE350 350 HP ROTARY SCREW AIR COMPRESSORS (Needs Repair)

KAESER KHD8000 WC AIR DRYER, s/n HI657079001001

WAZEE 3-TON BRIDGE CRANE SYSTEM, s/n 2997-3, w/ Approx. 15' Span x 30' Runway, CM Lodestar Electric Hoist

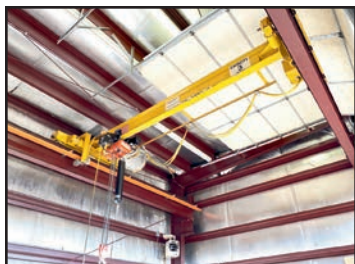
ALSO: LARGE MAINTENANCE CRIB W/(200+) ELECTRIC MOTORS-TO 25 HP, BEARINGS, BELTS, SPRINGS, VALVES, STARTERS, SOLENOIDS, SENSORS, CONTACTORS, FIBER, OPTIC SENSORS, METERS, COILS, CYLINDERS, RELAYS, SWITCHES, RECEPTACLES, PLUMBING SUPPLIES, FUSES AND MUCH MORE

Inspection of Assets in the Sale is By Appointment Only.

Anyone showing up to the site without a scheduled appointment will be denied entry. All coming on site for inspection day must sign a liability waiver and must be wearing long pants, close-toed shoes, and facemask. Call our office at +1-847-545-6374 to schedule your inspection.

Webcast Bidding Available Through

BidSpotter.com



WAZEE 3-TON BRIDGE CRANE SYSTEM



VIEW OF CABINETS



VIEW OF STORES



VIEW OF STORES

To discuss your requirements for an auction, please call Perfection Industrial **+1-847-545-6374**

METROLOGY LAB & QA, COMMERCIAL KITCHEN, STRAIGHT SIDE PRESS, MISCELLANEOUS EQUIPMENT, PRESSES

Day 2 Sale Date: Thursday, August 20 at 9:00 AM MT

BUILDING #2, CONTINUED



**THERMO SCIENTIFIC
ICE 3000 SERIES
ATOMIC ABSORPTION
SPECTROMETER**



**FISCHER TECH
FISCHERSCOPE
X-RAY XDL
SPECTROMETER**



VIEW OF HARDNESS TESTERS



VIEW OF GRINDING ACCESSORIES

METROLOGY LAB & QA

THERMO SCIENTIFIC ICE 3000 SERIES ATOMIC ABSORPTION SPECTROMETER, s/n C083300106

FISCHER TECH FISCHERSCOPE X-RAY XDL SPECTROMETER

BUEHLER 48-1573-BBB-R TRIPLE POLISHER SYSTEM, s/n 315-00T-4524/4525/4526

BUEHLER 48-1572-BBX DUAL POLISHER SYSTEM, s/n 316-00T-4530/4531

LABCONCO 70807-90S6517 PERCHLORIC ACID FUME HOOD, s/n 81457

MCGEAN-ROHCO B-237

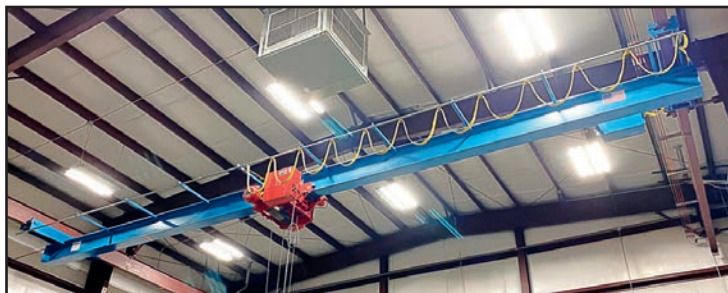
ALSO: LARGE SELECTION OF HARDNESS TESTERS, HEIGHT GAGES, PIN GAGES, FISCHER X-RAY, OPTICAL COMPARATORS, MICROMETERS, VERNIERS, BORE GAUGES, HEIGHT GAUGES, CALIPERS AND MORE

COMMERCIAL KITCHEN

TRUE T-49 SS REFRIGERATOR, s/n 167707, TRUE GDM-41 REFRIGERATOR, s/n 1-3379673, STAINLESS STEEL COUNTERS, RANDELL 9560-5M HOT FOOD WELL SERVER, METRO C200N HOLDING CABINET, s/n 02350, US RANGE FLAT TOP STOVE/GRIFFLE, TRUE WARMER, FRYMASTER DEEP FRYER, TRUE TPP-44 PREP TABLE W/REFRIGERATOR BASE, SUNFIRE GAS OVEN, SCOTSMAN HID312A-1A ICE MAKER

DON'T MISS THESE AUCTIONS!

PRESS BUILDING



WAZEE 5-TON BRIDGE CRANE SYSTEM

STRAIGHT SIDE PRESS

MINSTER E2-300 HEVISTAMPER 300-TON STRAIGHT SIDE PRESS, s/n E2-300-27651, w/96" x 48" Bolster, 100 SPM, 8" Stroke, 6" Adj., 30" Shut Height, Wintriss SmartPac 2 Control, w/Bliss/Clearing/Niagara Feeder and Uncoiler, s/n 125029-2

MISCELLANEOUS EQUIPMENT

WAZEE 5-TON BRIDGE CRANE SYSTEM, 58' Runway x 49' Span, w/Ace Electric Hoist w/Pendant Control, LISTA ROLLING TOOL CHESTS, BLUE GIANT B6L22-63 2,000 LB ELECTRIC PALLET JACK, 4' X 4' FLOOR SCALE W/ METTLER TOLEDO SC15 BENCH TOP UNIT, ZIP FZB 45 PARTS WASHER, HARDWARE CUBBIES W/LARGE ASSORTMENT OF FASTENERS, PALLET RACKING, SHOP FANS, WORK BENCHES, ETC.



VIEW OF CABINETS

26 AVAILABLE

COINING/ANNEAL BUILDING

PRESSES

KOMATSU MAYPRESS OKN-630 630-TON FORGING PRESS, s/n 1942201, w/43.3" x 30.7" Bolster, 42.9" x 15" Ram, 7" Stroke, 23.6" Shut Height, 2.3" Adj, 36 SPM

MINSTER 90-600-40 600-TON STRAIGHT SIDE PRESS, s/n 90-600-11067, w/36" x 39" Bed, 18" x 34" Ram, 5" Stroke



BLISS NO. 25 KJ 600-TON PRESS, s/n H62411, w/23" x 33" Bed, 17" x 17" Ram, 2.5" Stroke, 15.5" Shut Height, 33 SPM

KR WILSON DS-SA 500-TON HYDRAULIC PRESS, s/n 10662-001, w/47" x 44" Bed, 18" x 18" Ram,

(3) PACIFIC PRESS-FORMER 300-TON C-FRAME PRESSES, s/n 3985, 3984, NA,

NIAGARA A45 45-TON OBI PRESS, s/n 43887

NIAGARA A35 35-TON OBI PRESS, s/n 39992

**KOMATSU MAYPRESS
OKN-630 FORGING PRESS**

View our current auction schedule at www.perfectionindustrial.com

SHOT BLAST SYSTEM, FURNACES, GRINDING CELLS, MISCELLANEOUS MACHINERY & EQUIPMENT

COINING/ANNEAL BUILDING, CONT.

Day 2 Sale Date: Thursday, August 20 at 9:00 AM MT



(3) DOW FURNACE CO. SINGLE ANNEAL GAS FURNACES



AFC-HOLCROFT NORMALIZING BELT TYPE ELECTRIC FURNACE SYSTEM



ATMOSPHERE FURNACE CO. 3000CFH ENDOTHERMIC GAS GENERATOR

SHOT BLAST SYSTEM

2016 BLAST CLEANING TECHNOLOGIES M14-D TUMBLE BLAST MACHINE, s/n E16-09, w/Allen Bradley PanelView Plus 1250 PLC Control, 48" Dia. x 48" Deep Drum, M-3 Series Shot Blast Housing, Top Pivot Lid w/M-Lok, Epact 600 RPM Motor w/Front Deal System, 60" Separator w/Heavy Duty Rotary Screen, Hydraulic Pivot Loader (Bought New for \$500,000)

FURNACES

(2) **DOW FURNACE CO. BXA369636 210 KW DOUBLE ANNEAL ELECTRIC FURNACES**, s/n BXA-15, w/1750 Deg. F Max. Temp

(3) **DOW FURNACE CO. SINGLE ANNEAL GAS FURNACES**, s/n BXA-10/11/12, w/UPC Protherm 455 Control

AFC-HOLCROFT NORMALIZING BELT TYPE ELECTRIC FURNACE SYSTEM, s/n CJ-4326-1, w/4-Zone

ATMOSPHERE FURNACE CO. 3000CFH ENDOTHERMIC GAS GENERATOR, s/n 51205

GRINDING CELLS

(2) **BERGER AS1/2HYZ1AL GRINDERS**, s/n 4090/1339 and 4090/1340, w/Allen Bradley PanelView 1000 PLC Control, 10" Length x 14" Dia.,

(2) **BERGER AS1/2HYZ1AL GRINDERS**, s/n 4090/1341 and 4090/1343, w/Allen Bradley PanelView 1000 PLC Control, 10" Length x 14" Dia.,

BESLEY .25" TO .75" FACE GRINDER, s/n 2181151D

MISCELLANEOUS MACHINERY & EQUIPMENT

SCOTCHMAN 12012-24M IRONWORKER, s/n 50671M699, **WEBB WL-435 17" X 59" LATHE**, s/n 9-8109-03, **SIMPLEX 100-TON HYDRAULIC SHOP PRESS**, s/n 68259, **POWERMATIC 87 VERTICAL BANDSAW**, s/n 987731, **RIDGID 1224 POWER THREADER**, s/n EB12720997, **BRIDGEPORT VERTICAL MILL**, s/n 253306, **CINCINNATI BICKFORD 21" DRILL PRESS**, s/n 1L2106, **SETCO 106 2 HP GRINDER/POLISHER**, s/n 101126, (2) **MILLER DELTAWELD 651 MIG WELDERS**, s/n KE616851, KD472326, **MILLER SRH-444 ARC WELDER**, s/n 72628326, **THERMAL DYNAMICS PAK MASTER 100 PLASMA CUTTER**, s/n MG2218A190603C, **STEEL WELDING TABLES**, **WELDING SUPPLIES, POWER AND HAND TOOLS, ETC.**, **FARR TENKAY 20D DUST COLLECTOR**, s/n A-ENVL-98-1229-12, **DONALDSON TORIT DOWNFLO EVOLUTION DFE2-8 DUST COLLECTOR**, s/n 11315701-L1-1, **UNITED AIR SPECIALISTS DUSTHOG FJH12-3 DUST COLLECTOR**, s/n 60028111

ALSO: CROWN 15MT 1,500 LB ELECTRIC WALKIE STACKER, s/n 1A211173, **DOW FURNACE BXA-369636G 800,000 BTU DIE HEATER FURNACE**, s/n PBX-104G, **LARGE ASSORTMENT OF DIE LIFT CARTS**



SCOTCHMAN 12012-24M IRONWORKER



DONALDSON TORIT DOWNFLO EVOLUTION DFE2-8 DUST COLLECTOR



FARR TENKAY 20D DUST COLLECTOR



DUSTHOG AND TORIT DUST COLLECTORS



BESLEY .25"- .75" FACE GRINDER

To avoid any public gatherings, there will be no onsite participation in this Webcast-only auction.

All bidders will be able to place live, real-time bids using a desktop or mobile device (the exact same way Webcast bidders have participated in previous sales) and can listen live in real-time to the auctioneer's audio stream.

To discuss your requirements for an auction, please call Perfection Industrial **+1-847-545-6374**



**PERFECTION
Industrial Sales**

Perfection Industrial Sales – 2550 Arthur Ave., Elk Grove Village, IL 60007

Phone: +1-847-545-6374 – Fax: +1-847-427-8884

www.perfectionindustrial.com



Presorted
First Class Mail
U.S. Postage
PAID
Eugene, Oregon
Permit No. 17

3-DAY LIVE WEBCAST **ONLINE ONLY** AUCTION

Full Facility
Closure of **WESTERN FORGE**
A DIVISION OF IDEAL INDUSTRIES INC.
A LEADING AMERICAN HAND TOOL MFR.

Day 1 Sale Date:
Wednesday,
August 19
at 9:00 AM MT

Day 2 Sale Date:
Thursday,
August 20
at 9:00 AM MT

**DAY 3–
AUGUST 27
NEW LOTS
ADDED!**

Location: 4607 Forge Road,
Colorado Springs, CO 80907

Inspection: Mon., Aug. 17 & Tues., Aug. 18,
By Appointment Only

3-DAY LIVE WEBCAST **ONLINE ONLY** AUCTION

REMOVAL

Smaller, hand-carry lots must be removed by Tuesday, August 25. Large assets must be removed no later than Friday, September 4. All removal is on an appointment only basis. Anyone removing purchased items with a lift truck or another powered vehicle must have a certificate of insurance with a \$2M General Liability policy, and that certificate must be provided to the auctioneer for review and approval prior to the auction.

TERMS OF SALE

An 18% Buyer's Premium will be charged on all assets purchased by buyers providing full payment is made within 48 hours following the sale. Acceptable forms of payment are cashier's check, company check (with bank letter of guarantee) or wire transfer within 48 hours of the sale close. For any Buyers failing to pay within the 48 hour stated payment period, the Buyer's Premium will be increased to 21%. Everything will be

sold to the highest bidder, in accordance with the Auctioneer's customary "Terms of Sale", copies of which will be posted on the Auctioneer's website and subject to additional terms announced the day of sale. All items are sold "As is, Where is" without any warranty, express or implied.

PAYMENT

ALL PURCHASES MUST BE PAID WITHIN 48 HOURS OF THE CLOSE OF SALE. Contact our Accounting team for wire instructions. Only wire transfer or certified check, payable to Perfection Industrial Sales will be accepted. Company checks payable to Perfection Industrial Sales will be accepted only if accompanied by a bank letter of guarantee. All sales are subject to sales tax. Purchasers claiming Sales Tax exemptions must provide proof satisfactory to the Perfection Accounting team to claim such exemptions.

FOR FURTHER INFORMATION

For further information, contact Jennifer Reiner at +1-847-545-6374 or jennifer@perfectionindustrial.com.

Day 1 Sale Date:
Wednesday, August 19 at 9:00 AM MT

Day 2 Sale Date:
Thursday, August 20 at 9:00 AM MT

Location: 4607 Forge Road, Colorado Springs, Colorado 80907

Inspection: Monday, August 17 & Tuesday, August 18, By Appointment Only

**DAY 3–
AUGUST 27
NEW LOTS
ADDED!**



**PERFECTION
Industrial Sales**

Perfection Industrial Sales
ph +1-847-545-6374 • fax +1-847-427-8884
www.perfectionindustrial.com

Pre-Auction Offers Invited on Major Assets

Webcast Bidding Available Through

BidSpotter.com

Sale is Being Held in Conjunction With:



Hilco
Industrial

www.hilcoind.com • ph 877.37.hilco