

# 2-DAY AUCTION LIVE WEBCAST & ONLINE



Former Assets of  
**Virgin Orbit**

Former Assets Previously Owned by Virgin Orbit, LLC  
& Virgin Orbit Holdings, Inc - Used in the Manufacture  
of Rocket Systems & Component

**DAY 1**  
LIVE AUCTION via WEBCAST

**SALE DATE**

Tuesday, June 27  
at 10 AM PT

**DAY 2**  
ONLINE AUCTION

**SALE CLOSING FROM**

Wednesday, June 28  
at 10 AM PT

**SALE LOCATION**

3880 McGowen Street  
Long Beach, CA 90808

**INSPECTION**

Monday, June 26,  
from 9 AM to 4 PM PT



**55' W X 48' L X 26' INTERNAL HEIGHT**

ISO 8 HARDWALL CLEANROOM

**PRE-AUCTION  
OFFERS INVITED  
ON MAJOR ASSETS**

**COMPLETE CATALOG & INFORMATION:**

<https://perfection.global/virginorbit>

**FEATURING:** ISO 8 Cleanroom,  
Tool Room, Tube Bending &  
Ring Rolling, Fabrication,  
Welding, Inspection & Test,  
Assembly, Mobile Equipment,  
Facility Support & More



**2018**

ADDITION TECHNOLOGIES VBB25DR SERVO ELECTRIC  
TUBE BENDER



**35,274 LB CAPACITY**

HYUNDAI 160D-7A DIESEL FORKLIFT



**PERFECTION  
Industrial Sales**

**Perfection Industrial Sales**

ph +1-847-545-6374 • fax +1-847-427-8884

[www.perfectionindustrial.com](http://www.perfectionindustrial.com)

In Conjunction With:

**INTEGRA**  
ASSET SOLUTIONS

**LIQUIDITY**  
SERVICES



# CLEANROOM, TOOL ROOM MACHINERY, TUBE BENDING & RING ROLLING MACHINERY

## CLEANROOM

**ISO 8 CLEANROOM – DESIGNED & INSTALLED BY “CLEAN ROOMS WEST”** - Hardwall Cleanroom measuring 55’W x 48’L x 26’ internal height. Within the ISO 8 cleanroom is a retractable soft wall curtain that allows for a 22’W x 13’L x 26’H airlock as needed. Retracting the curtain will allow for added cleanroom space. A 9’ x 10’ slide door will provide outside entrance into airlock. A 7’W x 7’L x 10’H modular wall panel gown room is included within the cleanroom. Gown room has two storefront doors for entering and exiting the cleanroom.

**HARRINGTON (2) X 2-TON FREE STANDING CRANE SYSTEM**, Approx 30' Wide x 50' Long x 25' High (Note: To Be Offered Individually and in Combination with the Cleanroom)

**TECHNICAL AIR PRODUCTS VARIOUS NEW CLEAN ROOM STRUCTURES & SPARES**



ISO 8 HARDWALL CLEANROOM - OVERALL VIEW



CLEANROOM - INTERIOR VIEW



CLEANROOM - HARRINGTON CRANE SYSTEM

## TOOL ROOM MACHINERY

**2015 SOUTHWESTERN INDUSTRIES TRAK 1845SX CNC LATHE**, Proto Trak SLX CNC, Speed Range: High 250 ~ 2,500 RPM, Low 80 ~ 850 RPM

**2017 SOUTHWESTERN INDUSTRIES TRAK SX5P / DPM5 CNC VERTICAL TURRET MILL**, Proto Trak SMX CNC, Program Spindle Control: High 300 ~ 5,000 RPM, Low 40 ~ 600 RPM

**2015 SOUTHWESTERN INDUSTRIES TRAK DPM SX3P/ DPM3 CNC VERTICAL TURRET MILL**, Proto Trak SMX CNC, Program Spindle Control: High 300 ~ 5,000 RPM, Low 40 ~ 600 RPM



SOUTHWESTERN INDUSTRIES TRAK 1845SX CNC LATHE



SOUTHWESTERN INDUSTRIES TRAK SX5P / DPM5 CNC VERTICAL TURRET MILL



SOUTHWESTERN INDUSTRIES TRAK DPM SX3P / DPM3 CNC VERTICAL TURRET MILL



ADDITION TECHNOLOGIES VBB25DR SERVO ELECTRIC TUBE BENDER

## TUBE BENDING & RING ROLLING MACHINERY

**2018 ADDITION MANUFACTURING TECHNOLOGIES VBB25DR SERVO ELECTRIC TUBE BENDER**, Beckhoff Control



# TUBE BENDING & RING ROLLING MACHINERY, FABRICATION MACHINERY

## TUBE BENDING & RING ROLLING MACHINERY (CON'T)

SMT INDUSTRIES HYDRAULIC TUBE BENDER

2016 BAILEIGH RM-55 RING ROLLING MACHINE

TOOLS FOR BENDING (TFB) TFBV50 END FINISHING MACHINE

CABINET FULL OF TUBE BENDING TOOLING

(4) HEXAGON METROLOGY TUBE PROBES

## FABRICATION MACHINERY

2016 JMT SBT 3010 122" X 1/4" HYDRAULIC SHEAR, 4.3" Stroke, 13 SPM, Rake Adjustment, Power Back Gauge, 2-Front Supports, DT-7 PLC Control

CINCINNATI 60 CBIX4FT 60 TON HYDRAULIC PRESS BRAKE, 6' Overall Length of Bed & Ram, 53" Between Housings, 11" Stroke, Shadow IV Guards, Plus Brake Tooling

MARVEL S20V (PVD 20K) VERTICAL BANDSAW

2015 AMADA HA250W FULLY AUTOMATIC HORIZONTAL BANDSAW, Bundle Clamping

2016 DAKE ZIP 29 HORIZONTAL BANDSAW, 96.5" Blade Length

SCOTCHMAN 5014-TM 50-TON IRONWORKER, 1-1/4" thru 1/2" Capacity

SCOTCHMAN CPO 350 PULL DOWN CIRCULAR SAW, Swivel Vise

2015 BAILEIGH BB-4516M POWER FOLDER

2014 BAILEIGH SN-F11-AN CORNER NOTCHER

BAILEIGH ATM-27-1000 PNEUMATIC TAPPING MACHINE

ROPER WHITNEY 911 3/16 RADIUS MASTER

TENNSMITH SR36 3-ROLL BENCH TOP ROLLS, 22 Gauge

DAKE 3AIP ARBOR PRESS

ALSO: Double End Grinders, Belt Grinders, 2013 GRIZZLY G9972 Z Lathe on Top of Tooling Cabinet, ORBITALUM GFX 3.0 Orbital Cutter, (2) MILWAUKEE Deepcut Bandsaws, PROXXON Bench Top Pull Down Miter Saw, DEWALT Pull Down Saw, SAFTCART Gas Bottle Cart, (2) FOSTORIA Heatwave 15 Mobile Floor Fans, (8) \*NEW\* BIG ASS FANS 36" Wall Fans, Mag Drills, Tooling, Socket Sets and more



SMT INDUSTRIES HYDRAULIC TUBE BENDER



BAILEIGH RM-55 RING ROLLING MACHINE



TFB TFBV50 END FINISHING MACHINE



CABINET OF TUBE BENDING TOOLING



JMT SBT 3010 122" X 1/4" HYDRAULIC SHEAR



AMADA HA250W FULLY AUTOMATIC HORIZONTAL BANDSAW



CINCINNATI 60 CBIX4FT HYDRAULIC PRESS BRAKE



# FABRICATION MACHINERY



**MARVEL S20V (PVD 20K) VERTICAL BANDSAW**



**SCOTCHMAN 5014-TM 50-TON IRONWORKER**



**GRIZZLY G9972 Z LATHE ON TOOL CABINET**



**DAKE ZIP 29 HORIZONTAL BANDSAW**



**SCOTCHMAN CPO 350 PULL DOWN CIRCULAR SAW**



**BAILEIGH SN-F11-AN CORNER NOTCHER**



**BAILEIGH BB-4516M POWER FOLDER**



**ROPER WHITNEY 911 3/16 RADIUS MASTER**



**DOUBLE END GRINDERS**



**BELT GRINDER**



**TENNSMITH SR36 3-ROLL BENCH TOP ROLLS**



**SAFCART GAS BOTTLE CART**



# WELDING DEPARTMENT, (6) AS NEW - WELDING TABLES & ASSORTED TOOLING & ATTACHMENTS

## WELDING DEPARTMENT

(2) **MILLER** Dynasty 350 Welder, Argon/Helium Gas Mixer on Cart, **MILLER** Continuum 500 Welder, Continuum Double Wire Feed, Coolmate 3, (2) **MILLER** Millermatic 350P Welders, **MILLER** Millermatic 212 Auto-Set Welder, **MILLER** Millermatic 252 Welder, **HYPERTHERM** Powermax 85 Welder, **HENKEL / KEEN** KT-99 1,000W Welding Rod Oven, **PANDJIRIS** Mini Pro W/V5 F5 Welding Positioner, **JETLINE** ZB-300A Welding Positioner, **LINCOLN** Mobiflex Fume Collector, **MILLER** Filtair MWX-S Fume Extractor, **2017 BISCO** SF-1000 Fume Collector, 1.1 kw, Welding Clamps, Welding Consumables



**MILLER DYNASTY 350 WELDER**



**KEEN KT-99 1,000W WELDING ROD OVEN**



**BISCO SF-1000 FUME COLLECTOR**



**LINCOLN MOBIFLEX FUME COLLECTOR**



**MILLER FILTAIR MWX-S FUME EXTRACTOR**



**JETLINE ZB-300A WELDING POSITIONER**



**VIEW OF MILLER WELDERS**



**SIEGMUND METRIC SERIES WELDING TABLE**

## (6) AS NEW - WELDING TABLES & ASSORTED TOOLING & ATTACHMENTS

(4) **SIEGMUND METRIC SERIES** 3000MM X 1500MM X 200MM WELDING TABLES, 28mm Hole Diameter

(2) **SIEGMUND METRIC SERIES** 2400MM X 1200MM X 200MM WELDING TABLES, 28mm Hole Diameter

(4) **SIEGMUND** 2000MM X 200MM X 200MM ATTACHMENTS

(5) **SIEGMUND** 1000MM X 200MM X 200MM ATTACHMENTS

(6) **SIEGMUND** 500MM X 200MM X 200MM ATTACHMENTS

(2) **SIEGMUND** RACKS OF WELDING FIXTURES



**HUGE QTY OF SIEGMUND ATTACHMENTS & FIXTURES**

For auction inquiries,  
please contact Jennifer Reiner at  
(847) 545-6374 or  
[jennifer@perfectionindustrial.com](mailto:jennifer@perfectionindustrial.com)

Bidding Available Through  
**BidSpotter**



# INSPECTION & TESTING DEPARTMENT, MOBILE EQUIPMENT

## INSPECTION & TESTING DEPARTMENT

2016 HEXAGON RA-732ST ROMER ABSOLUTE INSPECTION ARM

NEWPORT RT SERIES 71" X 47-1/4" SEALED HOLE OPTICAL TABLE

STANDRIDGE 48" X 36" METROLOGY TABLE

(5) FLUKE VT900A GAS ANALYZERS

(3) LIGHTHOUSE APEX Z3 AIRBORNE PARTICLE COUNTERS

ADMET TENSILE TESTER



ADMET TENSILE TESTER



LIGHTHOUSE APEX Z3 AIRBORNE PARTICLE COUNTERS



FLUKE VT900A GAS ANALYZERS



HEXAGON RA-732ST ROMER ABSOLUTE INSPECTION ARM

## MOBILE EQUIPMENT

HYUNDAI 160D-7A 35,274 LB DIESEL FORKLIFT, Side-shift

TOYOTA 7FB CU45 9,500 LB ELECTRIC FORKLIFT, 96" Forks, Triple Mast, Side-shift

YALE NR040AEVS24TE091 3,500 LB RIDE-ON ELECTRIC FORKLIFT

(2) SKYJACK SJIII-3219 SCISSOR LIFTS, 19' Max Working Height

CALDWELL LIF-TRUC FORK EXTENSION

TASKI SWINGO 1655 FLOOR SCRUBBER/CLEANER, (As New)

ULINE H-1779 LONG FORK PALLET TRUCK

POWER BREEZER PB10-A-06-B MOBILE INDUSTRIAL FAN



(2) SKYJACK SJIII-3219 SCISSOR LIFTS



HYUNDAI 160D-7A DIESEL FORKLIFT



TOYOTA 7FB CU45 ELECTRIC FORKLIFT



YALE NR040AEVS24TE091 RIDE-ON ELECTRIC FORKLIFT



TASKI SWINGO 1655 FLOOR SCRUBBER/CLEANER



POWER BREEZER PB10-A-06-B MOBILE INDUSTRIAL FAN



# ROCKET ASSEMBLY & TRANSPORTATION, BRIDGE CRANE & LIFTING EQUIPMENT, SHIPPING CONTAINERS, COMPRESSOR & CHILLERS

## ROCKET ASSEMBLY & TRANSPORTATION

**GSE 2 ROCKET SLED TRANSPORTATION ASSEMBLY, REV06F**, Designed to Carry 11,457 Lb

**2017 FLOTRON 8042-400 HEADSTOCK & TAILSTOCK**

## BRIDGE CRANE & LIFTING EQUIPMENT

**HARRINGTON (2) X 2-TON FREE STANDING CRANE SYSTEM**, Approx. 30' Wide x 50' Long x 25' High (Note: To Be Offered Individually and in Combination with the Cleanroom)

**HYDRA-SET A-LC 2,000 Digital Crane Scale**

**(4) 2,000 LB LIFTING BARS**



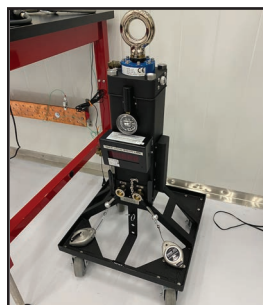
**HARRINGTON (2) X 2-TON FREE STANDING CRANE SYSTEM**



**GSE 2 ROCKET SLED TRANSPORTATION ASSEMBLY**



**FLOTRON 8042-400 HEADSTOCK & TAILSTOCK**



**HYDRA-SET A-LC 2,000 DIGITAL CRANE SCALE**



**(4) 2,000 LB LIFTING BARS**

## SHIPPING CONTAINERS

**2017 PACIFIC CONTAINER CO. QP-HART-160G**

**20' X 8'6" CONTAINER**

**(2) 2005 CIMC 101N42 40' CONTAINERS**

**2018 SPINCAKE 10' CONTAINER**



**2017 PACIFIC QP-HART-160G 20' X 8'6" CONTAINER**



**QUINCY QGD-25 COMPRESSOR**



**2018 SPINCAKE 10' CONTAINER**



**AIR RECEIVER TANK**



**DAKIN MOBILE PORTABLE CHILLER**



**YORK MOBILE PORTABLE CHILLER**

## COMPRESSOR & CHILLERS

**QUINCY QGD-25 Compressor, ZEKS Heatsink Dryer, Vertical Tank Receiver, YORK & DAKIN Mobile Portable Chillers**



LARGE ASSORTMENT OF INDUSTRIAL CABINETS, NEW MISCELLANEOUS PARTS & SPARES, FURNITURE & IT

LARGE ASSORTMENT OF INDUSTRIAL CABINETS

- (22) STRONGHOLD DOUBLE DOOR HEAVY DUTY CABINETS
- (25) ASSORTED LISTA & SNAP-ON TOOL CABINETS WITH MAPLE TOPS
- (4) STRONGHOLD DOUBLE CLEAR DOOR HEAVY DUTY CABINETS
- (3) JUST-RITE FLAME PROOF CABINETS



STRONGHOLD DOUBLE DOOR HD CABINETS



ASSORTED SNAP-ON TOOL CABINETS



NEW MISCELLANEOUS PARTS & SPARES

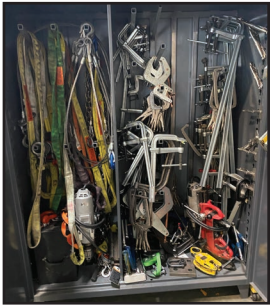
- (10) 2" Cryo-Actuated Ball Valve, (24) 9/16" 2-Way Medium Pressure Ball Valves, SOCITEC Wire Shock Mounts, Heavy and Light Duty Electrical Cable and Much More

FURNITURE & IT

Large Quantity of Office and Factory Furniture, Maple Top Desks, Huge Quantity of APC Rack Assemblies, Huge Quantity of APC Compact UPS Systems, Ethernet Switches, Firewalls, Power Supplies, Computer Screens, Big Screen TV's, MASTERMIND PRODUCTION GROUP / CLEAR-COM Intercom System, Audio Visual Broadcasting Equipment, Canteen Fridges, Lockers and more



ASSORTED LOCKER



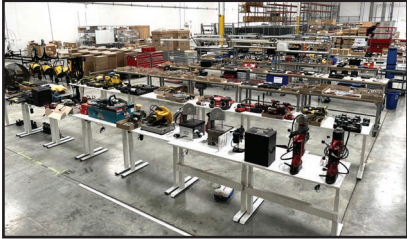
RIGGING & LIFTING SUPPLIES



MASTERMIND PRODUCTION GROUP / CLEAR-COM INTERCOM SYSTEM



VIEW OF KURT VISES & MACHINE SHOP FIXTURES



POWER & HAND TOOLS



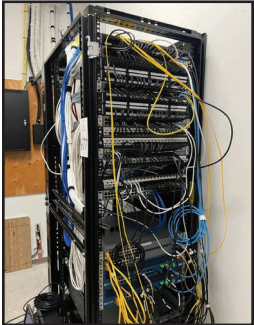
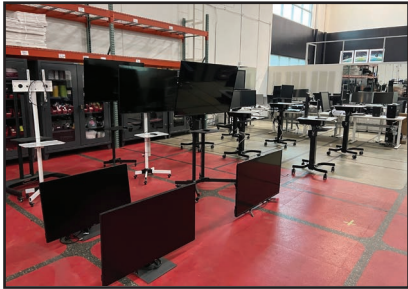
DURABLE & PERISHABLE TOOLING



ETHERNET SWITCHES, PSU'S & FIREWALLS



LARGE QTY OF FLATSCREEN TV'S & MONITORS



ASSORTED SERVER RACKS

For auction inquiries, please contact Jennifer Reiner at (847) 545-6374 or [jennifer@perfectionindustrial.com](mailto:jennifer@perfectionindustrial.com)

View our current auction schedule at [www.perfectionindustrial.com](http://www.perfectionindustrial.com)

DAY 1 • LIVE AUCTION via WEBCAST

SALE DATE  
Tues., June 27 at 10 AM PT  
Lots 1-529

DAY 2 • ONLINE AUCTION

SALE CLOSING FROM  
Wed., June 28 at 10 AM PT  
Lots 500 & up

SALE LOCATION  
3880 McGowen St. • Long Beach, CA 90808

INSPECTION  
Monday, June 26, from 9 AM to 4 PM PT

Bidding Available Through  
**BidSpotter**

**REMOVAL**  
All items must be removed no later than Friday, July 14. All removal is strictly on an appointment only basis. Anyone removing purchased items with a lift truck or another powered vehicle must have a certificate of insurance with a \$2M General Liability policy, the policy must include a Worker's Compensation rider, and that certificate of insurance must be provided to the auctioneer for review and approval prior to the auction.

**TERMS OF SALE**  
An 18% Buyer's Premium will be charged on all assets purchased by buyers providing full payment is made within 48 hours following the sale. Acceptable forms of payment are cashier's check, company check (with bank letter of guarantee) or wire transfer within 48 hours of the sale close. Everything will be sold to the highest bidder, in accordance with the Auctioneer's customary "Terms of Sale", copies of which will be posted on the Auctioneer's website and subject to additional terms announced the day of sale. All items are sold "As is, Where is" without any warranty, express or implied.

**FURTHER INFORMATION**  
For auction inquiries, please contact Jennifer Reiner at (847) 545-6374 or [jennifer@perfectionindustrial.com](mailto:jennifer@perfectionindustrial.com).

To discuss your requirements for an auction, please call Perfection Industrial +1-847-545-6374