

LIVE WEBCAST ^{ONLINE ONLY} AUCTION



OKUMA MA-500HII SPACE CENTER HORIZONTAL MACHINING CENTER



SMART SM 1565 VERTICAL MACHINING CENTER

TMI

TRIO MACHINE INC

**Aerospace Manufacturing
Facility Closure**

SALE DATE

Tuesday, June 7, at 10:00 AM CT

SALE LOCATION

2034 E Northern St., Wichita, KS 67216

INSPECTION

Monday, June 6, by appointment only

COMPLETE CATALOG & INFORMATION:

<https://perfection.global/trio>

**PRE-AUCTION
OFFERS INVITED
ON MAJOR ASSETS**

FEATURING: Immaculate Late Model CNC Machinery & Equipment Including: 2017 Okuma MA500HII HMC, (4) 2018 Smart Machine Tool SM 1565 & SM 1365 VMC's, (4) 2016 Okuma Genos M560-V VMC's, (4) 2008 Okuma MA550-VB VMC's, (4) 2008 OKK VM5III VMC's, (4) OKK VM5II VMC's, (4) Okuma MC-50VA VMC's, (4) Okuma MC-40VB VMC's, Machine Tooling, Conventional Machine Tools, Vibratory Shakers & Parts Washers, Horizontal & Vertical Bandsaws, CMM, Romer Hexagon Measuring Arm, Digital Inspection Equipment, Rolling Stock, Large Qty of High Grade Raw Materials & Plant Support Assets & (4) Chevrolet Camaros ZL1/SS as late as 2017 with Hennessey Upgrades!



**PERFECTION
Industrial Sales**

Perfection Industrial Sales

ph +1-847-545-6374 • fax +1-847-427-8884

www.perfectionindustrial.com

in conjunction with

M&E PARTNERS
STRATEGIC ASSET MONETIZATION

ph +1-251-644-4401 • www.m-epartners.com

HORIZONTAL MACHINING CENTER, VERTICAL MACHINING CENTERS



SMART SM 1565 VERTICAL MACHINING CENTER



SMART SM 1365 VERTICAL MACHINING CENTER



TSUDAKOMA TN-320 TRUNNION TABLE



TECHNITRON TWA-160 TRUNNION TABLE

HORIZONTAL MACHINING CENTER

2017 OKUMA MA-500HII SPACE CENTER HORIZONTAL MACHINING CENTER, s/n 205461, OSP-P300MA Control, (2) 19.69" x 19.69" Pallets, 27.56" X, 35.43" Y, 30.71" Z, CT50 Spindle Taper, 91-ATC

VERTICAL MACHINING CENTERS

(2) 2018 SMART SM 1565 VERTICAL MACHINING CENTERS, s/n 18002 & 18003, Fanuc 0i-MF Control, 25-1/2" x 63" Table, 3,197 Lb. Table Capacity, CT50 Spindle Taper, 6,000 RPM, 25 hp Main Motor, 30 ATC, X-59", Y-25", Z-24"

(2) 2018 SMART SM 1365 VERTICAL MACHINING CENTER, s/n 18002 & 18003, Fanuc 0i-MF Control, 25-1/2" x 55" Table, CT50 Spindle Taper, 30-ATC, 6,000 RPM, 25 hp Main Motor, X-51", Y-25", Z-24" (Tsudakoma TN-320 5th-Axis Trunnion Tables to be Offered Separately)

(4) 2016 OKUMA GENOS M560-V VERTICAL MACHINING CENTERS, s/n 191947, 191946, 191944, 191945, 22" x 51" Table, CT40 Spindle Taper, 32-ATC, X-41", Y-22", Z-18"

(4) 2008 OKUMA MA-550VB VERTICAL MACHINING CENTERS, s/n 141573, 140916, 142809, 150793, OSP-P200M Control, 22" x 51" Table, CT50 Spindle Taper, 32-ATC (Machines w/ 4th-Axis Tables will be offered Separately)

(4) 2008 OKK VM5III VERTICAL MACHINING CENTERS, s/n 3698, 3627, 3628, 3626, Fanuc 180iS-MB Control, 22" x 41-1/4" Table, CT50 Spindle Taper, 30-ATC, X-40", Y-20", Z-20" (Machines w/ 4th-Axis Tables will be offered Separately)

(4) OKK VM5II VERTICAL MACHINING CENTERS, s/n 452, 451, 436,434, Neomatic 635 Control, 22" x 41" Table, CT40 Spindle Taper, 20-ATC, X-40", Y-20", Z-20"

(4) OKUMA MC-40VB VERTICAL MACHINING CENTERS, s/n 0770, 0768, 0761, 0775, OSP 7000M Control, 17" x 39" Table, CT50 Spindle, 20 ATC, X-30", Y-15", Z-17", 5,000 RPM

(3) OKK MCV460 VERTICAL MACHINING CENTERS, s/n 132, 122, 113, Neomatic Control, 17-1/2" x 47-1/4" Table, CT50, 24-ATC, X-36", Y-18", Z-21"

(4) OKUMA MC-50VA VERTICAL MACHINING CENTERS, s/n 0333, 0370, 0385, 0387, OSP7000 Control, 20" x 51" Table, CT50 Spindle Taper, 20-ATC, X-41", Y-20", Z-22"

OKUMA MC-6VAE VERTICAL MACHINING CENTER, s/n 0525, OSP5020M Control, 24.5" x 60" Table, CT50 Spindle Taper, 20-ATC, X-59", Y-24", Z-24"

OKK MCV-560 VERTICAL MACHINING CENTER, s/n 186, Neomatic Control, 22" x 51" Table, CT50 Spindle Taper, 24-ATC, X-41", Y-22", Z-22"

For auction inquiries,
please contact Jennifer Reiner at
(847) 545-6374
or jennifer@perfectionindustrial.com

Bidding Available Through
BidSpotter

VERTICAL MACHINING CENTERS, CONT.



OKUMA GENOS M560-V VERTICAL MACHINING CENTER



OKUMA MA-550VB VERTICAL MACHINING CENTER



OKK VM5III VERTICAL MACHINING CENTER



OKK VM7II VERTICAL MACHINING CENTER



OKK VM5III VERTICAL MACHINING CENTER



OKUMA MC-50VA VERTICAL MACHINING CENTER



OKUMA MC-40VB VERTICAL MACHINING CENTER



(3) OKK MCV460 VERTICAL MACHINING CENTERS

5-AXIS MACHINING CENTER, SHEAR, TOOL ROOM MACHINERY



CINCINNATI V5-2000 5-AXIS MACHINING CENTER

5-AXIS MACHINING CENTER

2001 CINCINNATI LANCER V5-2000 5-AXIS MACHINING CENTER, s/n 3237A0198-001, Acramatic A2100 Control, 30" x 90" Table, HSK-63 Taper, 21-ATC, 6600 Lb. Table Load Capacity, X-80", Y-30", Z-30"

SHEAR

AMADA M-2045 POWER SQUARING SHEAR, s/n 2401580, .177" x 78" Capacity, 6' Squaring Arm, Front Supports

TOOL ROOM MACHINERY

HARDINGE HC Precision Lathe, s/n 2419G, 1.5 HP, 125-3000 RPM, Turret; **HARDINGE DSM-59 Precision Lathe**, s/n DV-59-10740; **HARDINGE HSL-59 Precision Speed Lathe**, s/n na; (2) **BRIDGEPORT SERIES I Vertical Mills**, s/n 224335 & 224160, 2 HP, 9" x 42" Table; **MILWAUKEE K PLAIN NO. 2 Horizontal Mill**, s/n 5-4046, 12" x 56" Table, 15-1500 RPM; **MILWAUKEE K PLAIN NO. 2 Vertical Mill**, s/n 3151, 12" x 56" Table, 15-1500 RPM; **ROPER WHITNEY PEXTO 381-D Manual Bending Roll**, s/n 1057380, 22 Ga x 36"; **HEM TWISTER Auto Horizontal Bandsaw**, s/n 726300, 5 HP, 14" x 20" Capacity, Mitering, Auto Infeed Table, 60-300 SFPM Blade Speed, 15' x 1-1/4" x .042" Blade Size; **GROB 4V-18 Vertical Bandsaw**, s/n 1933, 28" x 24" Table, 18" Throat, Blade Welder; **GROB 4V-36 Vertical Bandsaw**, s/n 1412, 28" x 24" Table, 36" Throat, Blade Welder; **ENERPAC H-Frame Hydraulic Shop Press**, w/ Enerpac PEJL3016 Hydraulic System, 10,000 PSI; **CENTRAL MACHINERY 32879 20-Ton H-Frame Shop Press**, s/n 352351446



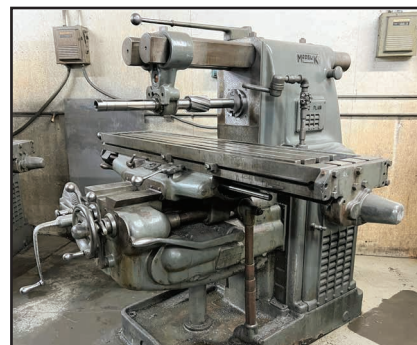
AMADA M-2045 POWER SQUARING SHEAR



HARDINGE HC PRECISION LATHE



BRIDGEPORT SERIES I VERTICAL MILL



MILWAUKEE K PLAIN NO. 2 HORIZONTAL MILL



HEM TWISTER AUTO HORIZONTAL BANDSAW



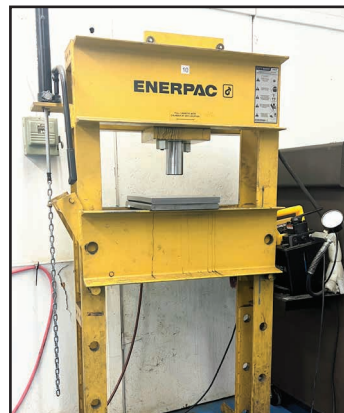
MILWAUKEE K PLAIN NO. 2 VERTICAL MILL



GROB 4V-18 VERTICAL BANDSAW



GROB 4V-36 VERTICAL BANDSAW



ENERPAC H-FRAME PRESS

VIBRATORY FINISHERS, INSPECTION

VIBRATORY FINISHERS

ARE INDUSTRIES S-7 SHAKER, s/n 1870864

(2) ARE INDUSTRIES MS-4 SHAKERS, s/n 1601-16-1 & 1601-16-2

INSPECTION

BROWN & SHARPE VALIDATOR COORDINATE MEASURING MACHINE, s/n 1295-524

ROMER HEXAGON ABSOLUTE RA-7525 PORTABLE COORDINATE MEASURING ARM, s/n 7525-37 10-UC, Laptop w/ Verisurf

FOWLER V4-700 DIGITAL HEIGHT GAGE, s/n 12116804

FOWLER TRIMOS V 600+ DIGITAL HEIGHT GAGE, s/n 6355

FOWLER HI CAL 150 DIGITAL HEIGHT GAGE, s/n 4175

CLARK C8A HARDNESS TESTER, s/n 30101

ALSO: OUTSIDE MICROMETERS, Calipers, Pin Gauges, Height Gages, Assorted Granite Surface Plates



ARE INDUSTRIES S-7 SHAKER



ARE INDUSTRIES MS-4 SHAKERS



ASSORTED HEIGHT GAGES

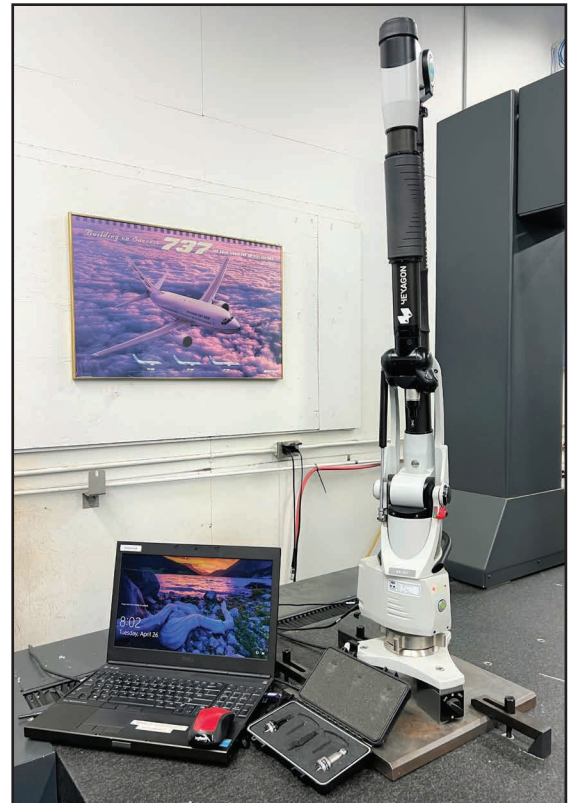


CLARK C8A HARDNESS TESTER

**PRE-AUCTION OFFERS
INVITED ON MAJOR ASSETS**



BROWN & SHARPE VALIDATOR COORDINATE MEASURING MACHINE



ROMER HEXAGON ABSOLUTE RA-7525 PORTABLE COORDINATE MEASURING ARM

FACTORY SUPPORT

FACTORY SUPPORT

2014 QUINCY QGS50 AIR COMPRESSOR, s/n API123553, 50 hp

CURTIS R/S30T ROTARY SCREW AIR COMPRESSOR, s/m 6836J99015, 30 hp, 100 PSI

LEROI CL 20 CUB AIR COMPRESSOR, s/n V9D74393X170, 20 hp

2015 GREAT LAKES GRF-250A-216 REFRIGERATED AIR DRYER, s/n 48683

NISSAN NOMAD 50 LP FORKLIFT, s/n na, 3,600 Lb. Capacity, 3-Stage Mast, Side Shift, 60" Fork Length

YALE ESCO30ZAN36TF083 3-WHEEL ELECTRIC FORKLIFT, s/n Z945W03274V, 3-Stage Mast, 3000 Lb. Capacity, 48" Fork Length

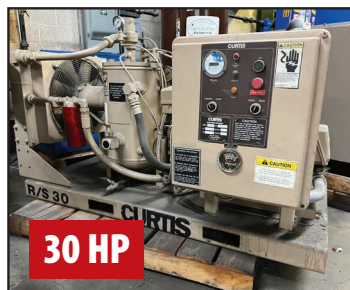
1997 DODGE RAM 3500 BOX TRUCK, VIN 1B6MC36W6VJ625109, V10 Magnum Engine, 30,229 Miles

LARGE SELECTION OF AEROSPACE-GRADE MATERIALS Incl. Titanium, Stainless Steel, Various Grades of Aluminum and More

ALSO: Hundreds of CT50, CT40 and HSK 63 Tool Holders, 2015 REGO-FIX powRgrip PGU9500 Automatic Tool Clamping System, Carbide Inserts, Twist Drill, Thread Mills, End Mills, Taps, Reamers, Collets, (50+) KURT Machine Vises, BRIDGEPORT Vises, Hand Tools, Power Tools, Pneumatic Tools, Toolboxes, Pallet Jacks, Spools of Wire



QUINCY QGS50 AIR COMPRESSOR



CURTIS R/S30T ROTARY SCREW AIR COMPRESSOR



LEROI CL 20 CUB AIR COMPRESSOR



GREAT LAKES GRF-250A-216 REFRIGERATED AIR DRYER



REGO-FIX POWRGRIP PGU9500 AUTOMATIC TOOL CLAMPING SYSTEM



TOOL CARTS



KURT & BRIDGEPORT VISES



NISSAN NOMAD 50 LP FORKLIFT



DODGE RAM 3500 BOX TRUCK



HUNDREDS OF TOOL HOLDERS



YALE ESCO30ZAN36TF083 3-WHEEL ELECTRIC FORKLIFT

PERFORMANCE VEHICLES - UNIQUE OPPORTUNITY

PERFORMANCE VEHICLES - UNIQUE OPPORTUNITY

2017 CHEVROLET CAMARO ZL1, VIN 1G1FJR66H0154365, w/ Hennessey Performance **THE EXORCIST** HPE100 Upgrade, High Flow Supercharger System, High Flow Air to Air Intercooler System, Hennessey Pulley Upgrade, High Flow Cylinder Heads, Custom HPE Camshaft, Stainless Steel Headers and High Flow Cats, Hennessey Premium Floor Mats and Badging (BLACK)

2016 CHEVROLET CAMARO SS, VIN 1G1FE1R5G0123502, 751 hp LT1 V8 Engine, Hennessey HPE600 Engine Upgrade, Ported Cylinder heads, Camshaft and Valvetrain Upgrade, Kooks 1-7/8" Long Tube Stainless Steel Headers w/ High Flow Catalytic Converters, High Flow Intake Manifold, Engine Management Recalibration, Nitrous Oxide Kit, Lowered Suspension system, Magnetic Ride Suspension, 20" Hennessey H10 Wheels (RED)

2015 CHEVROLET CAMARO 2SS, VIN 2G1FK1EJ5F9215859, 6.2L V8 Engine, 6-Speed Manual Transmission, w/ Hennessey Performance HPE550 Supercharged Upgrade, Ported Cylinder Heads, HPE Air Induction Heads, Upgraded Valvetrain, HPE550 Camshaft, Stainless Steel Long tube Headers, 160 Degree Thermostat, HPE Engine Management Calibration, Hennessey Badging, Hennessey Premium Floor Mats and Head Rests (BLUE)

2015 CHEVROLET CAMARO 2SS, VIN 2G1FK1EJ4F9232104, 6.2L V8 Engine, 6-Speed Manual Transmission, w/ Hennessey Performance HPE550 Supercharged Upgrade, Ported Cylinder Heads, HPE Air Induction Heads, Upgraded Valvetrain, HPE550 Camshaft, Stainless Steel Long tube Headers, 160 Degree Thermostat, HPE Engine Management Calibration, Hennessey Badging, Hennessey Premium Floor Mats and Head Rests (YELLOW)



CHEVROLET CAMARO ZL1 W/ THE EXORCIST PERFORMANCE PACKAGE



CHEVROLET CAMARO SS W/ HENNESSEY PERFORMANCE MODS



CHEVROLET CAMARO 2SS W/ HENNESSEY PERFORMANCE MODS

For auction inquiries, please contact Jennifer Reiner at
(847) 545-6374 or jennifer@perfectionindustrial.com

View our current auction schedule at www.perfectionindustrial.com

SALE DATE

Tuesday, June 7, at 10:00 AM CT

SALE LOCATION

2034 E Northern St., Wichita, KS 67216

INSPECTION

Monday, June 6,
by appointment only

REMOVAL

All items must be removed no later than Friday, June 24, by appointment only. No Exceptions. All removal is strictly on an appointment only basis. Anyone removing purchased items with a lift truck or another powered vehicle must have a certificate of insurance with a \$2M General Liability policy, the policy must include a Worker's Compensation rider, and that certificate of insurance must be provided to the auctioneer for review and approval prior to the auction.

TERMS OF SALE

An 18% Buyer's Premium will be charged on all assets purchased by buyers providing full payment is made within 48 hours following the sale. Acceptable forms of payment are cashier's check, company check (with bank letter of guarantee) or wire transfer within 48 hours of the sale close. For any Buyers failing to pay within the 48 hour stated payment period, the Buyer's Premium will be increased to 20%. All invoices paid with a credit card are subject to a 20% Buyer's Premium. Everything will be sold to the highest bidder, in accordance with the Auctioneer's customary "Terms of Sale", copies of which will be posted on the Auctioneer's website and subject to additional terms announced the day of sale. All items are sold "As is, Where is" without any warranty, express or implied.

FURTHER INFORMATION

For auction inquiries, please contact Jennifer Reiner at (847) 545-6374 or jennifer@perfectionindustrial.com.

Bidding Available Through
BidSpotter