

LIVE WEBCAST ^{ONLINE ONLY} AUCTION

Surplus to the Ongoing Operations of

Progress Rail *A Caterpillar Company*

**PRISTINE
2019 AMADA
Fab Facility**

SALE DATE

Tuesday, May 9, at 10:00 AM CT

SALE LOCATION

385 KY-2417, Corbin, KY 40701

INSPECTION

Monday, May 8,
from 9 AM to 4 PM CT,
by appointment only

**PRE-AUCTION
OFFERS INVITED
ON MAJOR ASSETS**

COMPLETE CATALOG & INFORMATION:

<https://perfection.global/5987>



AMADA HG2204ATC 8-AXIS 247 TON CNC PRESS BRAKE



AMADA ENSIS 3015 AJ 3150-WATT CNC FIBER LASER & STORAGE SYSTEM

FEATURING: ALL 2019 - AMADA HG2204-ATC 247 Ton CNC Press Brake w/ Tool Changer, AMADA 3.15kW Fiber Laser w/ Loading System; AMADA EMK-3612-M2 CNC Turret Punch; AMADA ID-TOGU Tool Grinder; AMADA FabriVISION 3Di Laser Inspection System; AMADA HKB6050CNC Bandsaw; AMADA MARVEL 800A-PC3S Bandsaw; Robotic Welding Cells, Highway Trailers, Powered/Roller Conveyor and more



**PERFECTION
Industrial Sales**

Steve Kleba IL Auctioneer Lic. #441.001778

Perfection Industrial Sales

ph +1-847-545-6374 • fax +1-847-427-8884

www.perfectionindustrial.com

Bidding Available Through

BidSpotter

CNC PRESS BRAKE, CNC FIBER LASER, CNC TURRET PUNCH, INSPECTION



AMADA HG2204ATC 8-AXIS 247 TON CNC PRESS BRAKE

CNC PRESS BRAKE

2019 AMADA HG2204ATC 8-AXIS 247 TON CNC PRESS BRAKE, s/n 22498059, w/ AMNC 3i CNC Control, 169.3" Table Length, 157.5" Max Bending Length, 148" Between Uprights, 17.7" Throat Depth, 9.8" Stroke, 23.5" Open Height, ATC Automatic Tool Changer & 112.8" Cap. Tool Storage Magazine

ASSORTED AMTS ATC PRESS BRAKE TOOLING

CNC FIBER LASER

2019 AMADA ENSIS 3015 AJ 3150-WATT CNC FIBER LASER, s/n 98310804, w/ AMNC 3i CNC Control, 120" x 60" Max. Sheet Size, X-121", Y-61", Z-3.93" Travels, 1" Max. Material Thickness (Mild Steel), 2,000 Lb Max. Material Weight, 4724 IPM Max. Positioning Speed per Axis, 6693 IPM Simultaneous, ENSIS3000 Fiber Laser Oscillator, CAMFIL GSP6-2K Dust Collector, ORION RKE5502B-DIBP Chiller, LIBERTY SYSTEMS EZTMV5000 Gas Mixer

2019 AMADA AMS 3015 CL ROBOTIC LOAD/UNLOAD & STORAGE SYSTEM, s/n LS693405, w/ 60" x 120" Max. Sheet Size, AMADA AMS 3015 CLT Storage Tower, s/n CLT30057, 10-Stations, 6,000 Lb Max. Station Load, 7" Max. Stack Height (Incl. Pallet)

CNC TURRET PUNCH

2019 AMADA EMK3612M2 CNC TURRET PUNCH PRESS, s/n 36134176, w/ AMNC 3i CNC Control, 33 Ton Capacity, 58-Station w/ (4) Auto Index, Travels: X-120", Y-60", 240" x 60" Max. Sheet Size w/ Repositioning, 4.5" Max Hole Diameter, X-3937 IPM, Y-3150 IPM Positioning Speed, X-500 HPM / Y-300 HPM (Punching), X-745 HPM / Y-410 HPM (Nibbling), .0984" Feed Clearance, 1.45" Stroke Length, .187" Max Sheet Thickness, 30 RPM Turret Rotation

AMADA TURRET PUNCH TOOLING

2019 AMADA ID-TOGU AUTOMATIC TOOL GRINDER, s/n 50230057, 0.6" - 6.29" Tool Diameter

INSPECTION

2019 AMADA VIRTEK FABRIVISION LASER INSPECTION SYSTEM, s/n NA, w/ 48" x 48" Scan Area, w/ VIRTEK LPS-1EA Laser Scanner



2019 AMADA VIRTEK FABRIVISION LASER INSPECTION SYSTEM



2019 AMADA ENSIS 3015 AJ 3150-WATT CNC FIBER LASER



AMADA AMS 3015 CL ROBOTIC LOAD/UNLOAD & STORAGE SYSTEM



AMADA EMK3612M2 CNC TURRET PUNCH PRESS



2019 AMADA ID-TOGU AUTOMATIC TOOL GRINDER

For auction inquiries, please contact Jennifer Reiner at (847) 545-6374 or jennifer@perfectionindustrial.com

BANDSAWS, MISCELLANEOUS MACHINERY

BANDSAWS

2019 AMADA HKB6050CNC 24" X 20" CNC HORIZONTAL BANDSAW, s/n 6650003Y, w/ 19'4" x 2" x 0.063" Blade, 50-325 FPM, 0.394" – 999.99" Feed Length, Coolant

2019 AMADA MARVEL G800APC3S TILTING COLUMN VERTICAL BANDSAW, s/n G800-0117PC3S, w/ Nominal Cutting Capacities: 31.25" x 37.5" Rectangle, 31.25" Rounds, 25' x 2" x 0.063" Blade, 60-400 FPM, +/- 60° Tilting from Vertical, Coolant, Hydraulic Vise, w/ PC3 Programmable Control

MARVEL NO 15 HORIZONTAL BANDSAW, s/n E-151968-W, w/ Feed & Exit Roller Conveyor

2016 LEWCO HD POWER FEED & EXIT ROLLER CONVEYOR SYSTEM, s/n S7527-001-01, w/ 46" x 69" Roller Feed Conveyor, 26" x 8' Roller Exit Conveyor, (2) Chain Transfer Sections

2016 LEWCO HD POWER FEED & EXIT ROLLER CONVEYOR SYSTEM, s/n NA, w/ 32" x 36' Roller Feed Conveyor, 52" x 18' Roller Exit Conveyor, (2) Chain Transfer Sections



2019 AMADA HKB6050CNC CNC HORIZONTAL BANDSAW



AMADA MARVEL G800APC3S TILTING COLUMN VERTICAL BANDSAW



MARVEL NO 15
HORIZONTAL BANDSAW



KBC TUM-40VS 5 HP VERTICAL MILL

MISCELLANEOUS MACHINERY

PINES NO 4 HYDRAULIC TUBE BENDER, s/n NA, w/ BENDPRO G2 Control, CW Rotation, Mandrel Extractor

MONARCH NO 612 20" X 78" ENGINE LATHE, s/n 51288, w/ 12" 3-Jaw Chuck, 12-1500 RPM, Taper Attachment, ALORIS Quick Change Tool Post, (2) Steady Rests

KBC TUM-40VS 5 HP VERTICAL MILL, s/n NA, w/ 10" x 54" Power Feed Table, 3-Axis Power Feeds, MITUTOYO 2 Axis DRO, 70-450 RPM Low, 450-3600 RPM High, 40 Taper

BRIDGEPORT SERIES II 4 HP VERTICAL MILL, s/n DO26641, w/ 11" x 58" Power Feed Table, 50-3500 RPM, 40 Taper, HEIDENHAIN 2 Axis DRO

CINCINNATI BICKFORD 4' X 9" RADIAL ARM DRILL, s/n 1R1520, w/ (9) Spindle Speeds 75-1500 RPM, 220-440V, 28" x 36" x 22"H Box Table

(2) **HANNIFIN HYDRAULIC C-FRAME PRESSES**, 50 Ton & 25 Ton

ALSO: Belt Grinders, Double End Grinders, Dust Collectors, Machinist Vises, Rotary Tables, Roller Conveyor, Power Tools, and more



PINES NO 4 HYDRAULIC TUBE BENDER



MONARCH NO 612 20" X 78" ENGINE LATHE



LEWCO HD POWER FEED & EXIT ROLLER
CONVEYOR SYSTEMS

ROBOTIC WELDING CELLS & WELDING DEPT., STEEL STOCK

ROBOTIC WELDING CELLS & WELDING DEPT.

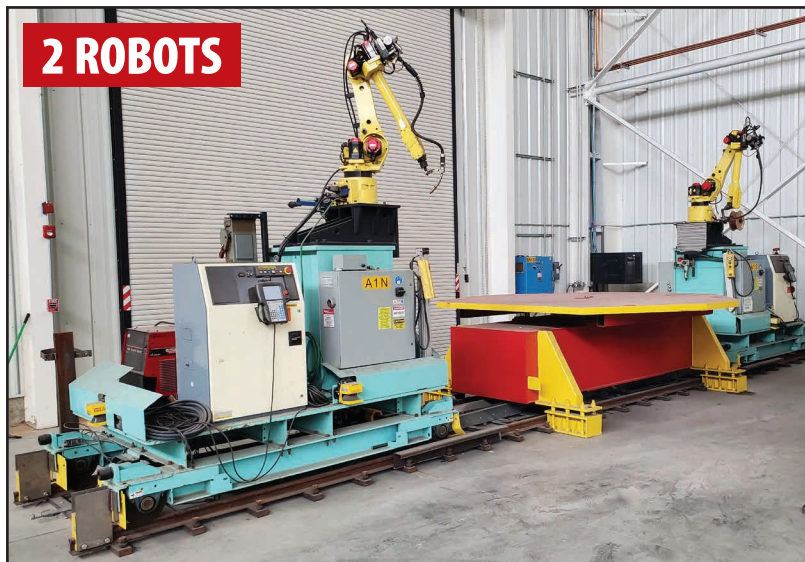
2012 GENESIS ROBOTIC WELDING CELL, Schematic Drawing # J7836-0002, w/ (2) FANUC ARC Mate 120iB, Robots, (2) FANUC R-J3iB Controllers, (2) LINCOLN Power Wave 455M Power Supplies, 140" x 120" Powered Turntable Positioner

(2) **2010 YASKAWA/MILLER ROBOTIC WELDING CELLS**, s/n S06B36, S06D65, w/ YASKAWA YR-MA3100 Robot, 3kg Payload, DX100/MA3100 Controller, MILLER AutoAccess 675 Power Supply, s/n LJ100529U, MOTOMAN MH 3100 Positioner, s/n 000545, 6.7 RPM

(9) **KOIKE-ARONSON HEADSTOCK/TAILSTOCK AND SKYHOOK WELDING POSITIONERS**, up to 40,000 lb. Capacity

ABB & FANUC ROBOTS

2 ROBOTS



2012 GENESIS ROBOTIC WELDING CELL



YASKAWA/MILLER ROBOTIC WELDING CELL



YASKAWA/MILLER ROBOTIC WELDING CELL



FANUC ARC MATE 120iB ROBOT



FANUC ARC MATE 120iB ROBOT



LINCOLN POWERWAVE
455M



LINCOLN POWERWAVE
455M



KOIKE ARONSON WELDING
POSITIONERS

STEEL STOCK

ASSORTED STAINLESS STEEL AND STEEL SHEET AND PLATE, 60" x 120"
from 16 Ga. – 7/8"



VIEW OF STEEL STOCK

TRAILERS & ROLLING STOCK

TRAILERS & ROLLING STOCK

2014 MAC 53' TRI-AXLE ENCLOSED STEP DECK CONESTOGA SEMI TRAILER, VIN 5MASA4834FA032084, w/ Air Ride, Fixed Axle Spread

2005 FONTAINE 353WDMR 48' T/A DOUBLE DROP TRAILER, VIN 4LF34820453527662

2002 GREAT DANE GRD248 48' ALUMINUM DECK FLAT BED SEMI TRAILER, VIN 1GRDM96203M031903, w/ Sliding Axle Spread

1997 GREAT DANE GPMS248 48' STEP DECK SEMI TRAILER, VIN 1GRDM9621VM044307, w/ Fixed Axle Spread

YALE GLP060 5,500 LB. LPG FORKLIFT, s/n B875V05331J, w/ 181.9" Tri-Mast, Side Shifter, 9,880 Hours, Note: Located in Houston Texas

FACTORY CAT RIDE-ON SWEEPER, s/n 40-7401, 24V, w/ LTD-FERRO Battery Charger, Note: Located in Houston Texas



YALE LP FORKLIFT



FONTAINE 353WDMR 48' T/A DOUBLE DROP TRAILER



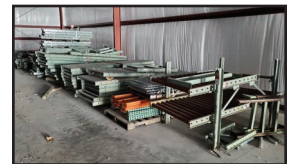
GREAT DANE GPMS248 48' STEP DECK SEMI TRAILER



MAC 53' TRI-AXLE ENCLOSED STEP DECK CONESTOGA SEMI TRAILER



HAMMOND BELT GRINDER



ASSORTED ROLLER CONVEYOR

For auction inquiries, please contact Jennifer Reiner at
(847) 545-6374 or jennifer@perfectionindustrial.com

Bidding Available Through
BidSpotter

View our current auction schedule at www.perfectionindustrial.com

SALE DATE

Tuesday, May 9, at 10:00 AM CT

SALE LOCATION

385 KY-2417, Corbin, KY 40701

INSPECTION

Monday, May 8, from 9 AM to 4 PM CT,
by appointment only

REMOVAL

All items must be removed no later than Friday, June 9. All removal is strictly on an appointment only basis. All rigging services necessary must be provided by a Caterpillar qualified and approved rigger. All visitors to the plant must be 18+ years old, and steel toe shoes and safety glasses must be worn.

TERMS OF SALE

An 18% Buyer's Premium will be charged on all assets purchased by buyers providing full payment is made within 48 hours following the sale. Acceptable forms of payment are cashier's check, company check (with bank letter of guarantee) or wire transfer within 48 hours of the sale close. For any Buyers failing to pay within the 48 hour stated payment period, the Buyer's Premium will be increased to 20%. All invoices paid with a credit card are subject to a 20% Buyer's Premium. Everything will be sold to the highest bidder, in accordance with the Auctioneer's customary "Terms of Sale", copies of which will be posted on the Auctioneer's website and subject to additional terms announced the day of sale. All items are sold "As is, Where is" without any warranty, express or implied.

FURTHER INFORMATION

For auction inquiries, please contact Jennifer Reiner at (847) 545-6374 or jennifer@perfectionindustrial.com.

AUCTION LICENSE

Steve Kleba IL Auctioneer Lic. #441.001778