

# 4 AUCTIONS **LIVE WEBCAST & ONLINE**

## **Progress Rail** *A Caterpillar Company*

**Featuring:** Large Capacity CNC Machine Tools, Parallel Kinematics Machine, Gun Drill, Conventional Machine Tools, Fabrication Equipment, Welding, Heat Treat, Finishing, Complete Boiler Room, Tooling, QA/Inspection, Cranes, Rigging, Material Handling, Ball

Bearing Tool Cabinets, Strongholds, MRO, Complete Switchgear Facility, Racking, Commercial Cafeteria, Office, Break Room, Shipping/Receiving & MUCH, MUCH MORE!



MITSUBISHI MAF150S-C CNC HORIZONTAL BORING MILL



2001 OLYMPIA V60-2 CNC VERTICAL TURNING CENTER

### **AUCTION 1 – LIVE via WEBCAST**

#### **SALE DATE**

Tuesday, May 18 at 9:00 AM CT

#### **SALE LOCATION**

9301 W. 55th Street,  
McCook, Illinois 60525

### **AUCTION 2 – ONLINE AUCTION**

#### **SALE CLOSING FROM**

Wednesday, May 19 at 9:00 AM CT

### **AUCTION 3 – ONLINE AUCTION**

#### **SALE CLOSING FROM**

Thursday, May 20 at, 9:00 AM CT

### **DAY AUCTION 4 – ONLINE AUCTION**

#### **SALE CLOSING FROM**

Friday, May 21 at 9:00 AM CT

### **INSPECTIONS**

Friday, May 14  
& Monday, May 17  
By Appointment Only

**Pre-Auction  
Offers Invited  
on Major Assets**

### **COMPLETE CATALOG & INFORMATION:**

<https://perfection.global/progressrail>



**Perfection Industrial Sales**  
ph +1-847-545-6374 • fax +1-847-427-8884  
[www.perfectionindustrial.com](http://www.perfectionindustrial.com)

Perfection Industrial Sales, IL Auction Licenses #444.000438 and #441.001779

Bidding Available Through

**BidSpotter.com**



**2009**



(1 OF 2) MITSUBISHI MHT1618 CNC 5-AXIS TABLE TYPE HORIZONTAL BORING MILLS

**2009**



(1 OF 2) MITSUBISHI MHT1618 CNC 5-AXIS TABLE TYPE HORIZONTAL BORING MILLS

**86.7" SWING**



MITSUBISHI M-VT20A CNC VERTICAL BORING MILL

## AUCTION 1 – LIVE via WEBCAST

**SALE DATE** Tuesday, May 18 at 9:00 AM CT

**SALE LOCATION** 9301 W. 55th St., McCook, IL 60525

### CNC HORIZONTAL BORING MILLS

**2016 MITSUBISHI MAF150S-C CNC TRAVELING COLUMN HORIZONTAL BORING MILL**, s/n 3MAA026, w/FANUC 31i-MB Control, 5.9" Spindle, Travels: X-157.4", Y-78.74", Z-27.5", W-39.4", 2,500 RPM, 50 Taper, 158" x 5" Floor Plate (Sold Separately) NOTE: Less Than 400 Hours

**(2) 2009 MITSUBISHI MHT1618 CNC 5-AXIS TABLE TYPE HORIZONTAL BORING MILLS**, s/n 3BAA125, 3B32124, w/FANUC 18i-MB Control

**GIDDINGS & LEWIS G60-RTX 4-AXIS TABLE TYPE HORIZONTAL BORING MILL**, s/n 450-152-85, w/NUMERIPATH Control

**MITSUBISHI MAF-S150A 4-AXIS CNC TWIN TABLE TRAVELING COLUMN HORIZONTAL BORING MILL**, s/n G55660, w/FANUC 15-M Control

### VERTICAL BORING MILLS

**MITSUBISHI M-VT20A CNC VERTICAL BORING MILL**, s/n R57070, w/FANUC 16-T Control, 86.7" Max. Swing

**2001 OLYMPIA V60-2 CNC VERTICAL TURNING CENTER**, s/n OE-2001-375, w/FANUC 18i-T Control, 70" Swing

**GIDDINGS & LEWIS 48" CNC VERTICAL BORING MILL**, s/n 512-67-77, w/FANUC Oi-TD Control, 48" Table Dia., NOTE: 2005 Retrofit Including FANUC Control, Motors and Drives

**INGERSOLL CNC TWIN BORE MACHINING CENTER**, s/n NA, w/FANUC Oi-MD Control



GIDDINGS & LEWIS  
G60-RTX 4-AXIS  
TABLE TYPE  
HORIZONTAL  
BORING MILL



GIDDINGS & LEWIS 60" CNC VERTICAL TURRET LATHE



# VERTICAL TURRET LATHES, HORIZONTAL MACHINING CENTERS, VERTICAL MACHINING CENTERS



GRAY 60" CNC VERTICAL TURRET LATHE

## VERTICAL TURRET LATHES

**GIDDINGS & LEWIS 60" CNC VERTICAL TURRET LATHE**, s/n 543-43-77, w/NUMERIPATH Series A Control, 60" Table Dia.

**GRAY 60" CNC VERTICAL TURRET LATHE**, s/n 10215, w/NUMERIPATH Control, 60" Table Dia.

**GIDDINGS & LEWIS 54" CNC VERTICAL TURRET LATHE**, s/n 512-92-78, w/NUMERIPATH Series B Control, 60" Swing

**NEW BRITAIN 1115NCV CNC VERTICAL TURRET LATHE**, s/n 40556, ALLEN BRADLEY 8200 Control

## HORIZONTAL MACHINING CENTERS

**MACHINING CELL COMPRISING (5) GIDDINGS & LEWIS 2200 ORION HORIZONTAL MACHINING CENTERS**, s/n 592-0102, 592-0103, 592-0104, 592-0105, 592-0106, w/ NUMERIPATH 8000B Control, CAT 50 Taper, 100-Station ATC, (2) 24.75" x 24.75" Pallets, w/ Pallet Pool System

**MITSUBISHI M-80EN CNC 4-AXIS HORIZONTAL MACHINING CENTER**, s/n CH4601, w/ FANUC 18i-M Control

**OKUMA MC-500H CNC 4-AXIS HORIZONTAL MACHINING CENTER**, s/n 0247, w/OSP5020 Control

## VERTICAL MACHINING CENTERS

**REKO MEDVE-8700WXR GANTRY TYPE VERTICAL MACHINING CENTER**, s/n 9601-P-7198, w/FANUC Series 15M Control

**2010 FANUC ROBODRILL A-T21IFLA CNC VERTICAL MACHINING CENTER**, s/n P109XH380, w/FANUC Series 31i-A5 Control, 4th Axis Table (21D)

**2010 BRIDGEPORT GX1000 VERTICAL MACHINING CENTER**, s/n NVCB0C0032, w/21.25" x 44" Table, Travels: X-40.16", Y-21.25", Z-21.25", 1,760 Lb Table Load, CAT 40 Taper, 30-Station ATC

**OKUMA MC-4VB VERTICAL MACHINING CENTER**, s/n 1647, w/OSP5020M Control

**(2) OKUMA MC-50VA VERTICAL MACHINING CENTERS**, s/n 0381, 0380, w/OSP7000M Control, TSUDAKOMA PCA901SN-20 Pallet Changer



GIDDINGS & LEWIS 48" CNC VERTICAL BORING MILL

Pre-Auction  
Offers  
Invited on  
Major Assets

**2005 RETRO**



MITSUBISHI M-80EN CNC 4-AXIS  
HORIZONTAL BORING MILL

## INSPECTIONS

Friday, May 14 & Monday, May 17  
By Appointment Only



REKO MEDVE-8700WXR GANTRY TYPE  
VERTICAL BORING MILL



**2010**

FANUC ROBODRILL A-T21IFLA CNC  
VERTICAL MACHINING CENTER



**2010**

BRIDGEPORT GX1000 VERTICAL MACHINING CENTER



**2 AVAILABLE**

OKUMA MC-50VA VERTICAL MACHINING CENTERS





OKUMA LB35II TURNING CENTER

## TURNING CENTERS

2010 OKUMA LB35II TURNING CENTER, s/n 143707, w/OSP-P200L Control

OKUMA LB25 TURNING CENTER, s/n 9686, w/OSP5020 Control

OKUMA LNC8 TURNING CENTER, s/n C823, w/OSP5020L Control

OKUMA LB15 TURNING CENTER, s/n A368

## PLANER MILLS

(3) KOLB PENTAMAT VC 2000 CNC PLANER TYPE MACHINING CENTERS, s/n NA, w/ SIEMENS Sinumerik Control, 185" x 78.7" Table, Travels: X-236.2", Y-118.1", Z-62.9", W-68.9", SK50/60 Taper, 120 HP Spindle, Tool Magazine: (32) SK50/60 (Changeable), (144) SK50/60 Tools, (8) Boring Bars, (2) Boring Bars (Changeable), (12) Machining Heads, (2) Changeable Machining Heads

GRAY OPEN SIDE PLANER MILL, s/n NA, w/220" x 56" Table

ROCKFORD PLANER MILL, s/n NA, w/18' x 48" Table



GRAY OPEN SIDE PLANER MILL



MATTISON 30" X 72" HYDRAULIC SURFACE GRINDER



BLANCHARD 22HD-42 ROTARY SURFACE GRINDER



HAUSER SIP S50-DR BRIDGE TYPE PRECISION JIG GRINDER

## PARALLEL KINEMATICS MACHINE

2008 HWACHEON EXECHON KE700 5-AXIS PARALLEL KINEMATICS MACHINE, s/n M360355C7ZA, w/Siemens 840D Control, 43" x 30" Table, X-78.7", Y-59.0", Z-23.6", W-27.5", Linear Actuator Stroke, 18,000 RPM, 24-Position ATC (Located in Elk Grove Village, IL)

## JIGMILLS, GRINDERS & BORERS

PRATT & WHITNEY 4E PRECISION JIG BORER, s/n 21640, w/48" Dia. Table

HAUSER SIP S50-DR BRIDGE TYPE PRECISION JIG GRINDER, s/n 0103, w/40" x 28" Table

DEVILIEG 3B-48 SPIRAMATIC JIGMILL, s/n NA, w/48" x 30" Table

UNISIG  
USK20-2-  
1000 CNC  
HORIZONTAL  
GUN DRILL



## GUN DRILL

2000 UNISIG USK20-2-1000 CNC HORIZONTAL GUN DRILL, s/n 1662, w/ FANUC 21i-M Control, (2) Spindles, 0.8" Rated Drill Dia/, 39.3" Drill Depth, 40" x 60" Table, X-32", Y-12", Z-72", 200 IPM Axis Travel Rates, 500-4,500 RPM Spindle Speeds (Located in Elk Grove Village, IL)



# ROTARY & SURFACE GRINDERS, MISC. GRINDERS, LATHES & MILLS, RADIAL ARM DRILLS



CINCINNATI 18LX 36 UNIVERSAL CYLINDRICAL GRINDER



HEALD NO 271 UNIVERSAL INTERNAL GRINDER



DOALL 17" X 48" TOOL ROOM LATHE

## ROTARY & SURFACE GRINDERS

BLANCHARD 22HD-42 ROTARY SURFACE GRINDER, s/n 13987, NOTE: 2010 Rebuild by FP MILLER

BLANCHARD 22D-42 ROTARY SURFACE GRINDER, s/n 15012

MATTISON 30" X 72" HYDRAULIC SURFACE GRINDER, s/n NA, w/ Twin 30" x 36" Electro-Mag Chucks

HARIG 618 AUTOINDEX SURFACE GRINDER, s/n 8012-H

(3) GARDNER 1015 HAND FEED SURFACE GRINDERS, s/n 659-1, 676-5, 650-14

## MISCELLANEOUS GRINDERS

OKAMOTO OGM-1240U CNC UNIVERSAL CYLINDRICAL GRINDER, s/n 31010, w/OKAMOTO Precision Control

CINCINNATI 18LX 36 UNIVERSAL CYLINDRICAL GRINDER, s/n 3U6D5L-3

CINCINNATI 16" X 48" UNIVERSAL CYLINDRICAL GRINDER, s/n 3U6E5F-1

(3) CINCINNATI MILACRON/HEALD NO 174 GAP BASE PLAIN INTERNAL GRINDERS, s/n 49383, 48494, 50350

HEALD NO 271 UNIVERSAL INTERNAL GRINDER, s/n 30231, w/RED HEAD Internal Spindle

OKUMA GC-34NH CNC CAMSHAFT GRINDER, s/n 0809.00118, w/ OSP5020 Control

## LATHES & MILLS

MONARCH 26" X 72" ENGINE LATHE, s/n NA;

(2) AMERICAN STYLE B 14" X 54" LATHE, s/n

80208-77, 78484; TRAK TRL 1840 SX LATHE,

s/n 091CQ62295, w/PROTO TRAK SLX

Control; DOALL 17" X 48" TOOL ROOM LATHE,

s/n Q54025; HARDINGE HLV PRECISION

LATHE, s/n 89224; (2) KNUTH BASIC PLUS

TOOL ROOM LATHES; (2) EMCO COMPACT 8

LATHES; MECOF CS-105 CNC MILLING

MACHINE, s/n NA, w/ALLEN BRADLEY

8200 Control; (2) BRIDGEPORT MILLING

MACHINES, s/n 176969, 176942; KEARNEY &

TRECKER MILWAUKEE 205 S-12 HORIZONTAL

MILL, s/n NA; (2) SUNDSTRAND C5 RIGIDMIL

MILLING MACHINES, s/n C5-87 and C5-86

## RADIAL ARM DRILLS

(3) 7' GIDDINGS & LEWIS BICKFORD CHIPMASTER RADIAL ARM DRILLS, s/n 954-00259-80, 956-00249-74, 956-00338-73

7' CARLTON RADIAL ARM DRILL, s/n 4A5765, w/19" Column, 12-1,200 RPM

(2) 4' CINCINNATI BICKFORD RADIAL ARM DRILLS, s/n A24631R2773, NA

(3) 4' GIDDINGS & LEWIS BICKFORD CHIPMASTER RADIAL ARM DRILLS, s/n 951-629-78, 956-00358-79, 956-00320-77

KNUTH KSB 63 BOX-COLUMN DRILL PRESS, s/n 1447, 25.5" x 21.75" Table, 15" Throat, 48-693 Spindle Speed

KNUTH KSR40 ADVANCE RADIAL ARM DRILL, s/n D05007, 16" x 41" Table, 50-2,000 RPM Spindle Speed



OKAMOTO OGM-1240U CNC UNIVERSAL CYLINDRICAL GRINDER



CARLTON 7' RADIAL ARM DRILL



KNUTH KSR40 ADVANCE RADIAL ARM DRILL

**SALE DATE** Tuesday, May 18 at 9:00 AM CT **SALE LOCATION** 9301 W. 55th St., McCook, IL 60525

**AUCTION 1 –  
LIVE via WEBCAST**





STEELWELD 8D-10 10' X 1/2" SQUARING SHEAR



BLISS C-75 75-TON OBI PRESS



MARVEL SERIES 8 MARK II VERTICAL BANDSAW



MILLER/JETLINE SWCB-3AB SEAM WELDING SYSTEM



VIEW OF WELDING SUPPLIES

CUTTINGS SYSTEMS  
10-STATION  
FLAME  
CUTTING  
SYSTEM

## FABRICATION MACHINES & PRESSES

CHICAGO DREIS & KRUMP 225 D4 225-TON X 78" PRESS BRAKE, s/n P-9947; STURDYBENDER A-2 4' X 1/4" PRESS BRAKE, s/n 05132; STEELWELD 8D-10 10' X 1/2" SQUARING SHEAR, s/n M0-9240; BUFFALO NO. 1 1/2 C UNIVERSAL IRONWORKER, s/n 75Y2482; MARVEL SERIES 8 MARK II VERTICAL BANDSAW, s/n 830707; DOALL 3613-20 VERTICAL BANDSAW, s/n 399-84556, w/DBW-15M Blade Welder/Grinder; WYSONG B-36 36" X 10 GA. POWERED SHEET ROLLS, s/n PR15-154; 2011 BIRMINGHAM R-0465H 4' X 1/4" HYDRAULIC BENDING ROLL, s/n 46161; JET BP-1248F 48" X 12 GA. BOX AND PAN BREAK, s/n 46030; BLISS C-75 75-TON OBI PRESS, s/n H65606; CLEARING P32-701 32-TON OBI PRESS, s/n 57-4487; V & O NO. 5 55-TON OBI PRESS, s/n 505-26; DAKE 50 H 50-TON HYDRAULIC H-FRAME SHOP PRESS, s/n 180655; DAKE 6-225 25-TON HYDRAULIC H-FRAME SHOP PRESS, s/n 193963T; POWERTEAM 25-TON HYDRAULIC H-FRAME SHOP PRESS; DME MACHINE PRESS, s/n C1564

## WELDING DEPARTMENT

(3) RANSOME 6H/6T 16,000 LB HEADSTOCK AND TAILSTOCK WELDING POSITIONERS, s/n 5634224/ 5534218 (9T), 5634222/5534216, 5634223/NA

ARONSON HD10A-MTVR2 10,000 LB WELDING POSITIONER, s/n 68188

PANDJIRIS 15-4-48 WELDING POSITIONER, s/n 14315XC6-7

AUTO-WELD SYSTEM W/ARONSON WELDING POSITIONER, ACME Jig w/LINCOLN Power Wave 455 Mig Welder

(20) LINCOLN AND MILLER WELDING POWER SOURCES

BANNER 2CPS50A18 50 KVA CIRCULAR SEAM SPOT WELDER, s/n 6693, w/48" Throat

MILLER/JETLINE SWCB-3AB SEAM WELDING SYSTEM, s/n 2016-138, w/LINCOLN 375 Precision Tig Welder



BIRMINGHAM R-0465H 4' X 1/4" HYDRAULIC BENDING ROLL



DOALL 3613-20 VERTICAL BANDSAW

FEN-TEC 9' SEAM WELDER SYSTEM, s/n NA, w/LINCOLN AC-1200 Arc Welder and NA-4 Solid State Wire Feed

MARK-V SEAM WELDER SYSTEM, w/LINCOLN DC-1500 Arc Welder, NA-5 Automatic DC Arc Welder System

CUTTINGS SYSTEMS  
10-STATION FLAME CUTTING SYSTEM

**SALE DATE** Tuesday,  
May 18 at 9:00 AM CT  
**SALE LOCATION**  
9301 W. 55th St.,  
McCook, IL 60525

**AUCTION 1 –  
LIVE via WEBCAST**



BANNER 2CPS50A18 50 KVA CIRCULAR SEAM SPOT WELDER



# BLAST & WASH SYSTEMS, COMPLETE BOILER ROOM, PARALLEL KINEMATICS MACHINE, INDUCTION HEATERS & OVENS



PROCECO 84"  
SS ROTARY TABLE  
WASH SYSTEM

SINCLAIR S20  
ROTARY TABLE  
SHOT BLAST SYSTEM

Pre-Auction  
Offers  
Invited on  
Major Assets



## BLAST & WASH SYSTEMS

**SINCLAIR S20 ROTARY TABLE SHOT BLAST SYSTEM**, s/n NA, Single 25 HP Wheel, w/ DONALDSON TORIT DFO2-4 Collection System

**BLAST CLEANING PRODUCTS SINGLE WHEEL SHOT PEENING MACHINE**, s/n 1577

**VAPOR BLAST BVLH-4836 BLAST CABINET**, s/n 6943

**MART HURRICANE 84 WASH SYSTEM**, s/n 6888, w/870-Gallon Reservoir, 780K BTU-Hr Natural Gas Heat Source

**PROCECO LEW84X204-S-20000-2-SS ROTARY TABLE WASH SYSTEM**, s/n 95-517, 20,000 Lb Load Capacity, 1,800-US Gallons, 1.8 M BTU/Hr

**PROCECO HD-100-48-G-6000-1-R WASH SYSTEM**, s/n 012-01, 6,000 Lb, 1,275-Gallon and 550-Gallon Tanks

**BETTER ENGINEERING F5000LXP ROTARY TABLE WASH SYSTEM**, s/n 17298, 60,000 Lb, 7,000-Gallon, Natural Gas

**PROCECO LTEW 21X10X5-G-100-R WASH SYSTEM**, s/n 08-502,

(2) **BETTER ENGINEERING SS M-70 WASHER SYSTEMS**, s/n 11746, NA

## COMPLETE BOILER ROOM

(2) **LINCOLN NS-E-59 BOILERS**, w/350 PSIG Max. Allowable Working Pressure, 70,000 Lb/Hr Max. Steam Capacity, TODD COMBUSTION VS90IGO 90.9 MMBTU/Hr Gas Burners, (2) Economizers, Deaerator System, Condensate System, Feed Water System, Water Conditioning System, (2) Fire Pump Systems, (2) 572-Gallon Tanks, CLARK Detroit Diesel-Allison Motors, JOSLYN CLARK Fire Pump Controller



VIEW OF BOILER ROOM



MART HURRICANE 84  
WASH SYSTEM



BETTER ENGINEERING F5000LXP  
ROTARY TABLE WASH SYSTEM

## INDUCTION HEATERS & OVENS

**INDUCTOHEAT INDUCTION HEATER SYSTEM**, s/n 0-3732, PANELVIEW Plus 600 PLC Control

(5) **PRECISION QUINCY VERTICAL OVENS AS NEW AS 2009**, Natural Gas, 800,000 BTU/Hr Max. Input, Class A

**PRECISION QUINCY 102-450TMMDD OVEN SYSTEM**, s/n 12967



VIEW OF BOILER ROOM

To avoid any public gatherings, there will be no onsite participation in this Webcast-only auction.



# AUCTION 1: LIVE VIA WEBCAST

**SALE DATE** Tuesday, May 18 at 9:00 AM CT  
**SALE LOCATION** 9301 W. 55th St., McCook, IL 60525

**ALSO:** PRATT & WHITNEY 12" MODEL B SHAPER, HUGE SELECTION OF TOOLING, MODULAR TOOL CABINETS, STRONGHOLD CABINETS, AIR TOOLS, PNEUMATIC TOOLS, POWER TOOLS, GRINDING ACCESSORIES, SETUP TOOLING, SHOP FANS, AND MORE



VIEW OF VIDMAR CABINETS



1,000'S AVAILABLE

VIEW OF TAPER TOOL HOLDERS



VIEW OF TAPER TOOL HOLDERS

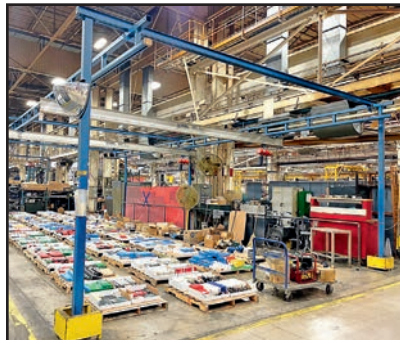
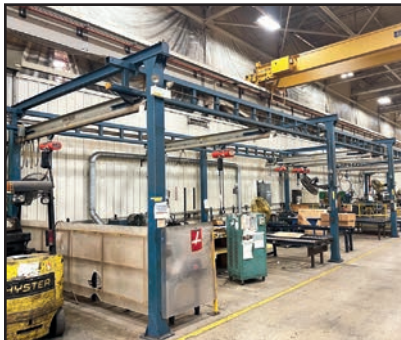
## AUCTION 2: ONLINE AUCTION

**SALE CLOSING FROM**  
Wednesday, May 19 at 9:00 AM CT

**Featuring:** Hundreds of Lots of Tooling, CMMs, QA & Inspection Items, (150+) Cranes Including Bridge Cranes up to 120-Ton, Free Standing Bridge Crane Systems, Free Standing Jib Cranes, Wall-Mount Jib Cranes, Electric Hoists, Rigging Supplies, Forklifts, Scissor Lifts, Boom Lifts, Carry-Deck Cranes, Utility Carts, Trunnions, Welding Supplies, Tool Room Machinery, Tool Boxes, Power, Hand & Pneumatic Tools, VIDMAR Ball Bearing Tool Cabinets, Stronghold Cabinets, & More



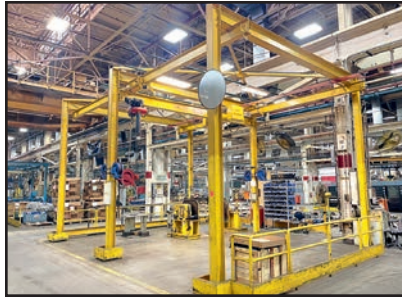
VIEW OF CMMs





# AUCTION 2: ONLINE AUCTION

**SALE CLOSING FROM**  
Wednesday, May 19 at 9:00 AM CT





# AUCTION 3: ONLINE AUCTION

**SALE CLOSING FROM**  
Thursday, May 20 at 9:00 AM CT

**Featuring:** MK High Voltage Test Equipment, SCHLEUNIGER Jacket Strippers, AMP K Presses, KODERA Wire Strippers, KOMAX Wire Cut & Strip Machines, Tensile Testers, Complete Maintenance Crib, Bearings, Circuit Boards, Breakers, Servo Motors, Servo Drives, Frequency Drives, Contactors, Relays, Proximity Switches, Sensors, Fuses, Electronics, Motors, Pumps, Machine Parts, Stronghold Cabinets, Power, Hand & Pneumatic Tools, VIDMAR & EQUIPTO Modular Cabinets, & More



**INSPECTIONS**  
Friday, May 14 & Monday, May 17  
By Appointment Only

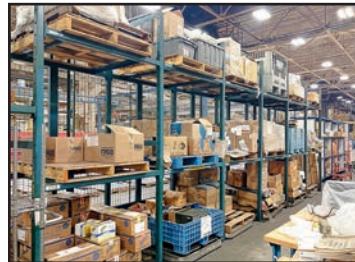
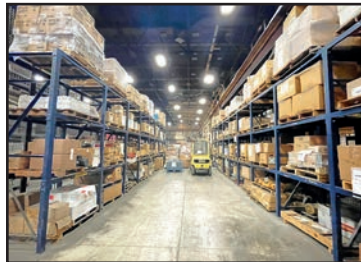




# DAY 4: ONLINE AUCTION

**SALE CLOSING FROM**  
Friday, May 21 at 9:00 AM CT

**Featuring:** Complete Switch Gear Facility, Electronics, Motors, Pumps, Cribbs, Power, Hand & Pneumatic Tools, VIDMAR Modular Cabinets, Stronghold Cabinets, Thousands of Feet of Racking, Complete Commercial Cafeteria, Appliances, Complete Office Area, Flatscreen TV's, Projectors, Projection Screens, Speaker Systems, Conference Rooms, Cubicles, Shipping/Receiving, & More



**Pre-Auction  
Offers  
Invited on  
Major Assets**

To avoid any public gatherings, there will be no onsite participation in this Webcast-only auction. All bidders will be able to place live, real-time bids using a desktop or mobile device (the exact same way Webcast bidders have participated in previous sales) and can listen live in real-time to the auctioneer's audio stream.

Complete Catalog & Information Available at <https://perfection.global/progressrail>





**PERFECTION  
Industrial Sales**

Perfection Industrial Sales –2550 Arthur Ave., Elk Grove Village, IL 60007

Phone: +1-847-545-6374 – Fax: +1-847-427-8884

[www.perfectionindustrial.com](http://www.perfectionindustrial.com)

Perfection Industrial Sales, IL Auction Licenses #444.000438 and #441.001779



Presorted  
First Class Mail  
U.S. Postage  
PAID  
Eugene, Oregon  
Permit No. 17

# 4 AUCTIONS LIVE WEBCAST & ONLINE

## Progress Rail

*A Caterpillar Company*



MITSUBISHI MAF150S-C CNC HORIZONTAL BORING MILL

**Featuring:** Large Capacity CNC Machine Tools, Parallel Kinematics Machine, Gun Drill, Conventional Machine Tools, Fabrication Equipment, Welding, Heat Treat, Finishing, Complete Boiler Room, Tooling, QA/Inspection, Cranes, Rigging, Material Handling, Ball Bearing Tool Cabinets, Strongholds, MRO, Complete Switchgear Facility, Racking, Commercial Cafeteria, Office, Break Room, Shipping/Receiving & MUCH, MUCH MORE!

# 4 AUCTIONS LIVE WEBCAST & ONLINE

### AUCTION 1 – LIVE via WEBCAST

#### SALE DATE

Tuesday, May 18 at 9:00 AM CT

#### SALE LOCATION

9301 W. 55th Street,  
McCook, Illinois 60525

**Pre-Auction Offers Invited  
on Major Assets**

#### INSPECTIONS

Friday, May 14 & Monday, May 17  
By Appointment Only

### AUCTION 2 – ONLINE AUCTION

#### SALE CLOSING FROM

Wednesday, May 19 at 9:00 AM CT

### AUCTION 3 – ONLINE AUCTION

#### SALE CLOSING FROM

Thursday, May 20 at 9:00 AM CT

### DAY AUCTION 4 – ONLINE AUCTION

#### SALE CLOSING FROM

Friday, May 21 at 9:00 AM CT

**PAYMENT:** An 18% Buyer's Premium will be charged on all assets purchased by buyers providing full payment is made within 48 hours following the sale. Acceptable forms of payment are cashier's check, company check (with bank letter of guarantee) or wire transfer within 48 hours of the sale close. For any Buyers failing to pay within the 48 hour stated payment period, the Buyer's Premium will be increased to 20%. All invoices paid with a credit card are subject to a 20% Buyer's Premium. Everything will be sold to the highest bidder, in accordance with the Auctioneer's customary "Terms of Sale", copies of which will be posted on the Auctioneer's website and subject to additional terms announced the day of sale. All items are sold "As is, Where is" without any warranty, express or implied.

**REMOVAL:** Removal of purchased lots begins on Monday, May 24. All small, hand-carry lots must be removed by Friday, June 4. All other items must be removed no later than Friday, June 11. All removal is strictly on an appointment only basis. Rigging Note: All Buyers must use rigging companies specified by Progress Rail. A list of approved riggers can be found on the Perfection Industrial Sales and Bidspotter websites and will be included with all invoices.

#### FOR FURTHER INFORMATION

Please contact Jennifer Reiner at +1-847-545-6374 or [jennifer@perfectionindustrial.com](mailto:jennifer@perfectionindustrial.com).

#### COMPLETE CATALOG & INFORMATION:

<https://perfection.global/progressrail>



**PERFECTION  
Industrial Sales**

Perfection Industrial Sales

ph +1-847-545-6374 • fax +1-847-427-8884

[www.perfectionindustrial.com](http://www.perfectionindustrial.com)

Bidding Available Through

**BidSpotter.com**

Perfection Industrial Sales, IL Auction Licenses #444.000438 and #441.001779