

LIVE WEBCAST ONLINE ONLY AUCTION

MAJOR PRINTING ROLL MANUFACTURER - COMPLETE FACILITY CLOSURE



FEATURING: HERCULES Autoclave, MORI SEIKI NL 2000 Lathe, (3) MIYANO 34S Swiss Type Lathes, (9) RIBON/JK Machinery Cylindrical Grinders, Roll Grinders, NARDINI/JK Machinery Cut-Offs, SASAMOTO S-1000 Finish Roller, SUMMIT & LIBERTY Lathes, Vertical Mills, DAVIS STANDARD & LIBERTY Extruders, Autoclaves, Burn-Off Ovens, Screw Machines, Bandsaws, Sheetmaster Sheeter, Torit Dust Collection Units, Optical Comparators, Material Handling, Rolling Stock, Pallet & Cantilever Racking, Pallet Wrapper, Round Stock, Bus Bar, Plant Support & More



MORI SEIKI NL2000SMC/500 4-AXIS TURNING CENTER

SALE CLOSING FROM

Tuesday, February 23, at 10:00 AM CT

SALE LOCATION

171 W. Marquardt Dr., Wheeling, IL 60090

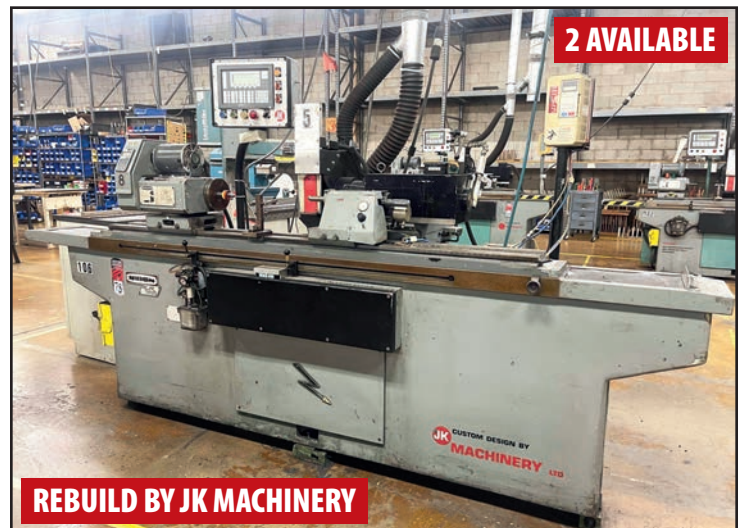
INSPECTION

By Appointment Only on Monday, February 22

**Pre-Auction Offers
Invited on Major Assets**

**Over 350 Lots
Available**

COMPLETE CATALOG & INFORMATION:
<https://perfection.global/pamarco>



RIBON RUR 1500 UNIVERSAL CYLINDRICAL GRINDER/ROLL GRINDER



Perfection Industrial Sales
ph +1-847-545-6374 • fax +1-847-427-8884
www.perfectionindustrial.com

Bidding Available Through
BidSpotter.com

Perfection Industrial Sales, IL Firm Lic. #444.000438 | Steve Kleba, IL Auctioneer Lic. #441.001778 | Joseph Lundvick, IL Auctioneer Lic. #441.001779

TURNING CENTERS, CONVENTIONAL MACHINE TOOLS, CYLINDRICAL GRINDERS/ROLL GRINDERS



MORI SEIKI NL2000SMC/500 4-AXIS TURNING CENTER

TURNING CENTERS

- 2007 MORI SEIKI NL2000SMC/500 4-AXIS TURNING CENTER, s/n 201001707, MSX-850III Control
- (3) MIYANO BNC-34S/BND-34S TURNING CENTERS, s/n BN31055S, BD3031SB and BN30483S, w/FANUC Series 0-T Control
- (4) FMB TURBO AND LNS BAR FEEDS

CONVENTIONAL MACHINE TOOLS

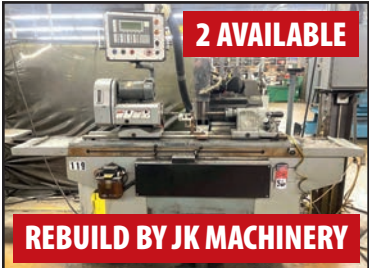
- SUMMIT 20" X 120" LATHE, s/n D07026, 22" Swing, 120" Between Centers, 12" 3-Jaw Chuck, Tool Post, Tailstock, Steady Rest 22-1,500 RPM
- NARDINI ND-1560E LATHE, 15" Swing, 60" Between Centers, 8" 3-Jaw Chuck, Tool Post, Tailstock, 25-2,000 RPM
- LIBERTY 1340 LATHE, s/n 13490081510, 13" Swing, 40" Between Centers, Collet Nose, Steady Rest, Tool Post, 8-2,570 RPM
- BRIDGEPORT VERTICAL MILL, s/n 42075, 9" x 32" Table, 3/4 HP, 80-2,720 RPM, Acu-Rite DRO
- ENCO 2 HP VERTICAL MILL, 9" x 42" Table, 80-5,440 RPM



MIYANO CNC TURNING CENTERS



NARDINI ND-1560E LATHE



RIBON RUR 800 UNIVERSAL CYLINDRICAL GRINDER/ROLL GRINDER



BRIDGEPORT VERTICAL MILL



ENERPAC 50-TON HYDRAULIC H-FRAME PRESS



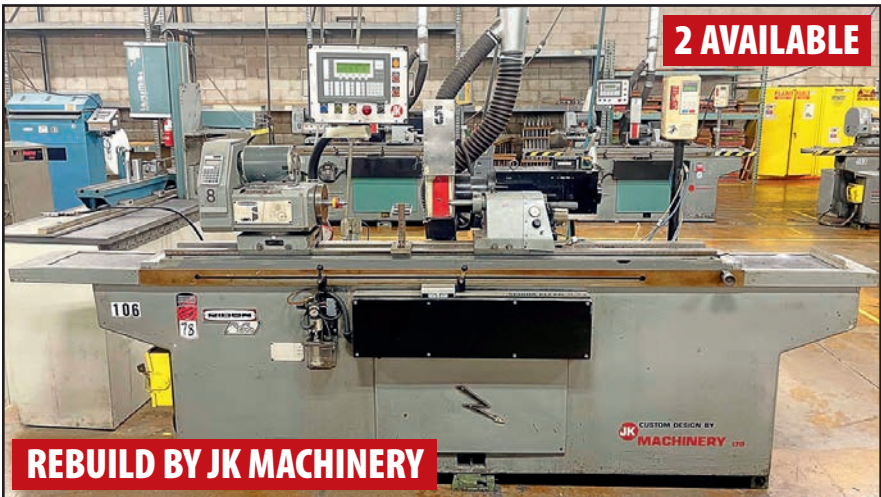
RIBON RUR 1000 UNIVERSAL CYLINDRICAL GRINDER/ROLL GRINDER



FMB TURBO 8-80/4200/A BAR FEED



SUMMIT 20" X 120" LATHE



RIBON RUR 1500 UNIVERSAL CYLINDRICAL GRINDER/ROLL GRINDER

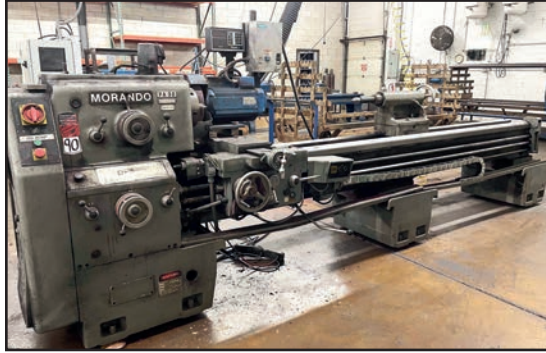
CYLINDRICAL GRINDERS/ROLL GRINDERS

- (2) RIBON RUR 1500 UNIVERSAL CYLINDRICAL GRINDERS/ROLL GRINDERS (RETRO/REBUILD BY JK MACHINERY), 60" Max. Grinding Length, 12.5" Max. Grinding Dia., 6" Center Height, PLC Control, Setco Precision Head
- (7) RIBON RUR 1000 UNIVERSAL CYLINDRICAL GRINDERS/ROLL GRINDERS (RETRO/REBUILD BY JK MACHINERY), 40" Max. Grinding Length, 11" Max. Grinding Dia., 5.5" Center Height, PLC Control, Setco Precision Head
- (2) RIBON RUR 800 UNIVERSAL CYLINDRICAL GRINDERS/ROLL GRINDERS (RETRO/REBUILD BY JK MACHINERY), 31.5" Max. Grinding Length, 12" Max. Grinding Dia., 6" Center Height, PLC Control, Precision Head

ROLL GRINDERS/LATHES, TRIMMER LATHES, EXTRUDERS, PULLERS



SUMMIT 24-4X120 ROLL GRINDER/LATHE



MORANDO PA30 ROLL GRINDER/LATHE



LONGEN LG-2080DS ROLL GRINDER/LATHE



JK MACHINERY/SOUTH BEND TRIMMER LATHE



DAVIS-STANDARD 350S 3.5" EXTRUDER



DAVIS-STANDARD 2.5" EXTRUDER



TEI 903B AC 3" SHORT BARREL EXTRUDER



(7) EXTRUDER SIDE HEADS



RDN 230-6 PULLER

ROLL GRINDERS/LATHES

SUMMIT 24-4X120 ROLL GRINDER/LATHE, s/n E03012, 24" Swing, 120" Between Centers, 18-1,200 RPM, REMCO K75MB/2 Roll Grinder Attachment, 10 HP, SWI TRAK DRO

SUMMIT 20-4X120 ROLL GRINDER/LATHE, s/n 074407578, 20" Swing, 120" Between Centers, 75 HP Roll Grinder Attachment, DRO Pros 2L DRO

MORANDO PA30 ROLL GRINDER/LATHE, s/n 055658606, 24" Swing, 120" Between Centers, 20-2,000 RPM, REMCO Roll Grinder Attachment, TRAK 101 DRO

(2) LONGEN LG-2080DS ROLL GRINDERS/LATHES, s/n 95-8-9 and 95-7-51, 20" Swing, 80" Between Centers, 18-1,600 RPM, LAO RG-75 Roll Grinder Attachment, SWI TRAK 101 DRO

SOUTH BEND CL117H ROLL GRINDER/LATHE, s/n 14060H, 16" Swing, x 108" Between Centers, Roll Grinder Attachment, ACU-RITE Qwik Count Parts Counter

(2) SOUTH BEND CL117G ROLL GRINDERS/LATHES, s/n 14259H and 14357H, 16" Swing, 84" Between Centers, Roll Grinder Attachment, ACU-RITE DRO

SOUTH BEND CLK117G ROLL GRINDER/LATHE, s/n DDB200HG, 16" Swing, 84" Between Centers, 2" Roll Grinder Attachment,

SOUTH BEND CLC117E ROLL GRINDER/LATHE, s/n 13743HKX, 16" Swing, 72" Between Centers, Roll Grinder Attachment, ACU-RITE DRO

ENCO 110-2033 ROLL GRINDER/LATHE, s/n 941481, 12" Swing, 36" Between Centers, DUMORE Post Grinder Attachment, 50-1,200 RPM

SOUTH BEND ROLL GRINDER, s/n 00074AM, 28" Swing, 120" Between Centers, 12" 3-Jaw Chuck, 2" Grinding Belt

TRIMMER LATHES

JK MACHINERY/SOUTH BEND TRIMMER LATHE, 12262HKX15, 16" Swing, 60" Between Center, Variable Speed Spindle Control, SWI TRAK 101 DRO

JK MACHINERY TRIMMER LATHE, 20" Swing in Gap, 14" Swing Over Bed, 48" Between Centers, 5C Collet Nose, Tool Post, Pneumatic Tailstock, AVG EZ Series DRO

JK MACHINERY TRIMMER LATHE, 14" Swing, 44" Between Centers, SWI TRAK 101 DRO, Pneumatic Tool Post and Tailstock

JK MACHINERY/LOGAN TRIMMER LATHE, 12" Swing, 30" Between Centers, SWI TRAK 101 DRO, Pneumatic Tool Post and Tailstock

CUSTOM TRIMMER LATHE, 12" Swing, 72" Between Centers, Dual Tool Posts, BIMBA Stainless Pneumatic Cylinder Tail Stock, PLC Control

EXTRUDERS

DAVIS-STANDARD 350S 3.5" EXTRUDER, s/n G-7391 and 351N35, 17.39 Gear Ratio, 75 HP, 66 RPM (Side Head Sold Separately)

DAVIS-STANDARD 2.5" EXTRUDER, s/n M-4164, 40 HP (Side Head Sold Separately)

ROYLE 3W-3-1/2" 20:1 L/D EXTRUDER, s/n 5769, 75 HP

STELASTIC 903B AC 3" SHORT BARREL EXTRUDER, s/n 156, 25 HP

TEI 903B AC 3" SHORT BARREL EXTRUDER, s/n 145, 30 HP

(7) EXTRUDER SIDE HEADS, from 7"-2" Max. OD

PULLERS

RDN 230-6 PULLER, s/n 38241

(2) RDN 218-3 PULLERS, s/n 37423 and 40458

INSPECTION

By Appointment Only
on Monday,
February 22

SALE CLOSING FROM

Tuesday, February 23,
at 10:00 AM CT

SALE LOCATION

171 W. Marquardt Drive,
Wheeling, IL 60090

**Pre-Auction Offers
Invited on Major Assets**

**Over 350 Lots
Available**

View our current auction schedule at www.perfectionindustrial.com

HEAT TREAT/FINISHING, INSPECTION, BUSWAY, PLANT SUPPORT



APPROX. 54" DIA. X 156" L. ENCLOSURE

HERCULES PSS15E AUTOCLAVE



300°F MAX. TEMP

GRIEVE B1H-500 OVEN



RANSOHOFF WASHER SYSTEM



39" MAX. WIDTH

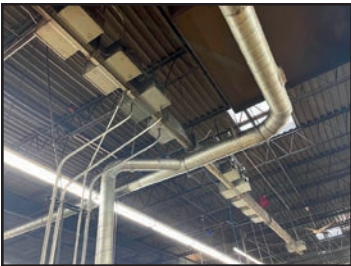
SASAMOTO S-1000
FINISH ROLLER



VIEW OF PROFILE PROJECTORS



APPROX. 220' OF BUSWAY



5,000 LB. CAP.

HYSTER S50XL LP FORKLIFT



3,500 LB. CAP.

YALE NR035AA STAND-UP
REACH ELECTRIC FORKLIFT

To discuss your requirements for an auction,
please call Perfection Industrial +1-847-545-6374

TERMS OF SALE

A 20% buyer's premium will be charged on all assets. The buyer's premium will be reduced to 18% for payments made by means of cashier's check or wire transfer within 48 hours of sale close. If paying by company check, a paid in full invoice will be issued upon the check clearing. Credit card payments are limited to a maximum of \$2,000. There is no reduction of the buyer's premium for buyers paying with a credit card. All items are sold "As is, Where is" without any warranty, express or implied.

REMOVAL

All items must be removed no later than Friday, March 12. All removal is strictly on an appointment only basis. Due to strict access restrictions and rules, we are limited to 1 rigger for this auction. Everything but small, hand-carry items must be removed by the assigned rigger: Rite Industrial. Rigging costs are indicated in the lot catalog on a per lot basis. The contact for Rite Industrial is Chad Boelk, (608) 215-9941, chad@riteindustrialmovers.com

FOR FURTHER INFORMATION

Please contact Jennifer Reiner at 1+ 847-545-6374 or jennifer@perfectionindustrial.com

HEAT TREAT/FINISHING

HERCULES PSS15E AUTOCLAVE, s/n 1062, Approx. 54" Dia. x 156" Enclosure, w/(2) Loading Carts

STEAM AUTOCLAVE SYSTEM, w/FULTON FB-030-A Fuel Fired Steam Boiler, s/n 54153, 1,035 Lb. Steam/Hr., Approx. 32" Dia. x 10' Enclosure

AUTOCLAVE, Approx. 60" Dia. x 10' Enclosure, w/(2) Loading Carts

GRIEVE B1H-500 OVEN, s/n 410817, 350,000 BTU/Hr Heat Input, Natural Gas, 300 Degree F Max. Temp

RANSOHOFF WASHER SYSTEM, s/n H2303, 24" x 28" Capacity, 90 Gal. Tank, Wash-Rinse-Blowoff, w/(5) Carts w/Loading Baskets

SASAMOTO S-1000 FINISH ROLLER, s/n 001, 39" Max. Width, Finish Applicator for Rubber Rolls

INSPECTION

MITUTOYO PH-A14 PROFILE PROJECTOR, s/n 118691510, w/ MITUTOYO KA-200 DRO

GAGE MASTER EX312/CME PROFILE PROJECTOR, s/n 144615388, w/EASSON ES-8A DRO

BATY R14XL PROFILE PROJECTOR, s/n 7323, w/BATY GXI-2000 DRO

STARRETT SIGMA HE400 PROFILE PROJECTOR, s/n 2347, w/QUICK-CHEK DRO

TECHMET LASERMIKE 2020, s/n 94-253

TECHMET LASERMIKE 183-35, s/n 7-024

(2) **TRIMOS TVD 1100A HEIGHT GAGES**, s/n 328 and 346

ALSO AVAILABLE: DIGITAL HEIGHT GAGES, INDICATOR STANDS, DIAL INDICATORS, GRANITE SURFACE PLACES



TECHMET LASERMIKE 2020



GRANITE SURFACE PLATE

BUSWAY

APPROX. 220' OF ITE ABD306, GOULD BDP304 AND ITE ABD302 DISTRIBUTION BUSWAY, 600V Max., 3-Pole

PLANT SUPPORT

HYSTER S50XL LP FORKLIFT, s/n A187V04520G, 5,000 Lb. Capacity, 3-Stage Mast, Side Shift

YALE NR035AA STAND-UP REACH ELECTRIC FORKLIFT, s/n N470965, 3,500 Lb. Capacity, 24V, w/Prestolite Power AC500 Charger

SKYJACK 3220 SCISSOR LIFT, s/n 60088, 20' Platform Height, 800 Lb. Capacity

DONALDSON TORIT DFO 2-4 DUST COLLECTION SYSTEM, s/n 3359637, 7.5 HP

DONALDSON TORIT DF T4-52 DUST COLLECTION SYSTEM, s/n IG437366-001

DONALDSON TORIT B-220 DUST COLLECTION SYSTEM, s/n 1390855

ALSO AVAILABLE: TOOLING, VISES, FIBERGLASS AND ALUMINUM LADDERS, PEDESTAL SHOP FANS, WORK BENCHES, WELDERS, JIB CRANES, PALLET JACKS, TRUCK SCALES, (45) FOOT PEDAL LIFT CARTS, STOCK AND SHOP CARTS, CANTILEVER AND PALLET RACKING, FLAMMABLE LIQUIDS STORAGE CABINETS, SHOP LIGHTING, PACKAGING AND SHIPPING, AND MORE



SKYJACK 3220
SCISSOR LIFT



DONALDSON TORIT
DF T4-52
DUST COLLECTION
SYSTEM



DONALDSON TORIT DFO 2-4
DUST COLLECTION SYSTEM

Bidding Available
Through

BidSpotter.com

Pre-Auction Offers
Invited on Major Assets

Over 350 Lots
Available

Complete Catalog & Information Available at <https://perfection.global/pamarco>