



PERFECTION
Industrial Sales

ONLINE AUCTION

Assets Available
Due to the
Continuing
Operations of



FEATURING: 2007 SCHULER SCH-1600-1.5 X 1.5 HYDROFORMER PRESS, (4) 1995-2000 MINSTER 5 OBS PRESSES, BLISS HP2-400 SSDC PRESS, 1999 ACCURPRESS 7606 PRESS BRAKE, SINGLE END PUNCH, SAWS, TUBE & PIPE EQUIPMENT, CNC MACHINE TOOLS, 5-STAGE WASHER, FURNACES, STAINLESS STEEL PAINT BOOTHS, VIBRATORY FINISHERS, WELDING DEPARTMENT, TOOL ROOM, CRANES, ROLLING STOCK & SUPPORT



2007

1,600-TON

SCHULER SCH-1600-1.5 X 1.5 HYDROFORMER PRESS



2000

4 AVAILABLE

MINSTER 5 OBS FLYWHEEL PRESS



1999

ACCURPRESS 7606 PRESS BRAKE



ADDISON MCKEE FM-70 ID/OD TUBE END SIZING AND FORMING MACHINE

Sale Closing From: Thursday, May 17 at 12:00 PM CT

Sale Locations: Cambridge, Minnesota; Acadia, Wisconsin; Clinton, Tennessee; Fort Wayne, Indiana

Inspection: Wednesday, May 16 from 8:00 AM-4:00 PM CT



PERFECTION
Industrial Sales

Perfection Industrial Sales
ph +1-847-545-6374 • fax +1-847-427-8884
www.perfectionindustrial.com

Sale is Being Held in
Conjunction With:



Online Bidding at www.perfectionindustrial.com

Ph 847-673-0570
www.allinindustrial.com

PRESSES, FABRICATING



2007

1,600-TON

SCHULER SCH-1600-1.5 X 1.5 HYDROFORMER PRESS



BLISS HP2-400 SSDC PRESS



1995

MINSTER 5 OBS FLYWHEEL PRESS



HANSFORD 1014 DIE HANDLER



BLISS OBI PRESS



1999

ACCURPRESS 7606 PRESS BRAKE



LOWN B400 48" PINCH TYPE PLATE BENDING ROLL



STRIPIT CUSTOM 30/30 SINGLE STATION PUNCH

PRESSES

2007 1,600-TON SCHULER SCH-1600-1.5 X 1.5 HYDROFORMER PRESS, s/n 30/20660, 1.5m x 1.5m Bed, 16,000 kN Max. Closing Force, 600mm Max. Slide Stroke, 10mm Max. Stroke of Bed Cushion, 605/805mm Tooling Height, 500mm/s Closing Speed, 2.5mm/s Max. Speed at Nominal Force, 500mm/s Max. Return Speed, 10,000 kg Max. Tooling Weight, Double Filter System, Beckhoff CNC Control (Location: Cambridge, MN Plant)

400-TON BLISS HP2-400 SSDC PRESS, s/n H65261, 50" x 55" x 3.25" Bolster, 1.5" Stroke, 100-250 SPM, 24" Shut Height SDAU, 32" x 21" Window, (Location: Acadia, WI Plant)

(2) 2000 45-TON MINSTER 5 OBS FLYWHEEL PRESSES, s/n's 55S-29933 and 55S-29909, 28" x 18" Bolster, 6" Stroke, 90 SPM, 2.50" Slide Adjustable, 13.75" Max. Shut Height (Location: Cambridge, MN Plant)

(2) 1995 45-TON MINSTER 5 OBS FLYWHEEL PRESSES, s/n's 55S-FB-27986 and 55S-FB-27988, 28" x 18" Bolster, 3" Stroke, 90 SPM, 2.50" Slide Adjustable, 15.75" Max. Shut Height (Location: Cambridge, MN Plant)

45-TON BLISS OBI PRESS, s/n H58105, 3" Stroke, 3" Adjustable, 29" x 19" Bed, 15" x 10" Ram (Location: Cambridge, MN Plant)

HANSFORD 1014 DIE HANDLER, s/n 110, 6,000 Lbs Capacity, 9-32" Overture, 23" Vertical (Location: Cambridge, MN Plant)

ROWE 12" UNCOILER W/FOOT PEDAL CONTROL (Location: Cambridge, MN Plant)

FABRICATING

1999 ACCURPRESS 7606 PRESS BRAKE, s/n 5527, 60-Ton, 6' Bed, Programmable Back Gauge, Pedestal Control (Location: Cambridge, MN Plant)

STRIPIT CUSTOM 30/30 SINGLE STATION PUNCH, s/n 25982774 (Location: Cambridge, MN Plant)

LOWN B400 48" PINCH TYPE PLATE BENDING ROLL, s/n NA (Location: Cambridge, MN Plant)

ROFIN DC015 YAG LASER SYSTEM, s/n 3538 3538, w/Riedel PC321 Chiller (Location: Cambridge, MN Plant)

THERMAL DYNAMICS PAKMASTER 75 XL PLUS PORTABLE PLASMA CUTTER (Location: Cambridge, MN Plant)

JET VBS-18MW 18" VERTICAL BANDSAW, s/n 14091428 (Location: Cambridge, MN Plant)

GROB 4V-18 VERTICAL BANDSAW, s/n 4108 (Location: Cambridge, MN Plant)

BEWO 350HT/PK COLD SAW, s/n 21781294 (Location: Cambridge, MN Plant)

BROWN MASTER 12" COLD SAW (Location: Cambridge, MN Plant)



ROFIN DC015 YAG LASER SYSTEM



THERMAL DYNAMICS PAKMASTER 75 XL PLUS PLASMA CUTTER



JET VBS-18MW 18" VERTICAL BANDSAW



BEWO 350HT/PK COLD SAW

To discuss your requirements for an auction, please call Perfection Industrial 847.427.3333

TUBE & PIPE MACHINERY, MACHINE TOOLS



PINES TUBE BENDER

TUBE & PIPE MACHINERY

(2) PINES #3 TUBE BENDERS, (Location: Clinton, TN Plant)

UNKNOWN MAKE TUBE BENDER, Approx. 4" Diameter Tube Capacity (Location: Cambridge, MN Plant)

EAGLE TC80PC TUBE CUT OFF, s/n S1394-2 (Location: Cambridge, MN Plant)

ADDISON MCKEE FM-70 ID/OD TUBE END SIZING AND FORMING MACHINE, s/n J073645 (Location: Cambridge, MN Plant)

PROTO-1 DOUBLE END FACER, s/n 18765, Weintek PLC Control (Location: Cambridge, MN Plant)

HAVEN 922 END FINISHER, s/n 7182, w/Feedall 1500 Loading System (Location: Cambridge, MN Plant)

PINES 660 END FINISHING MACHINE, s/n 66000-11016 (Location: Cambridge, MN Plant)

RIDGID 1224 PIPE THREADER, s/n EB31163 0507 (Location: Cambridge, MN Plant)

TOLEDO 999 PIPE THREADER, s/n 5719073 (Location: Cambridge, MN Plant)



EAGLE TC80PC TUBE CUT-OFF



PROTO-1 DOUBLE END FACER



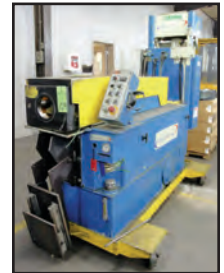
RIDGID 1224 PIPE THREADER



HAVEN 922 END FINISHER



TOLEDO 999 PIPE THREADER



ADDISON MCKEE FM-70 ID/OD TUBE END SIZING AND FORMING MACHINE



UNKNOWN MAKE 4" TUBE BENDER

Sale Locations: Cambridge, Minnesota; Acadia, Wisconsin; Clinton, Tennessee; Fort Wayne, Indiana

MACHINE TOOLS

MAKINO KE55 CNC VERTICAL MILL, s/n KE113, 40 Taper, 45-4,000 RPM, 21.6" X, 12.6" Y, 13.8" Z, 31.5" x 14.8" Table, Makino Professional Jr CNC Control (Location: Cambridge, MN Plant)

CINCINNATI MILACRON 10VC-1000 CNC VERTICAL MACHINING CENTER, s/n 49804, w/Acrumatic-900 Control (Location: Clinton, TN Plant)

MITSUBISHI CX20 WIRE EDM (Location: Clinton, TN Plant)

Online Bidding at www.perfectionindustrial.com



MAKINO KE55 CNC VERTICAL MILL



CINCINNATI MILACRON 10VC-1000 CNC VMC



MITSUBISHI CX20 WIRE EDM

Sale Closing From: Thursday, May 17 at 12:00 PM CT
Inspection: Wednesday, May 16 from 8:00 AM-4:00 PM CT

View our current auction schedule at www.perfectionindustrial.com

FINISHING & PAINTING

FINISHING & PAINTING

ITW BGK CUSTOM LUBRICANT APPLICATION SYSTEM, w/Conveyor System, Pass Through Oven, Application Booth, w/Allen-Bradley Panel View Plus 700 PLC Control (Location: Cambridge, MN Plant)

PRECISION QUINCY 5-STAGE WASHER SYSTEM, s/n 11798-99 (Location: Cambridge, MN Plant)

PCP CONTROLLED PYROLYSIS PRC883852 NATURAL GAS CLEANING FURNACE, 460,000 BTU/Hr. (Location: Cambridge, MN Plant)

IONTECH FREE STANDING STAINLESS STEEL MANUAL PAINT BOOTH, w/(2) Onoda Ionics GX304 Spray Guns and Controllers, w/Exhaust System (Location: Cambridge, MN Plant)

(2) IONTECH STAINLESS STEEL PAINT BOOTHS, (2) Onoda Ionics GX304 Manual Spray Guns and Controllers, w/(2) Parker Ionics 2-Gun Oscillating Spray Guns Each w/GX305 Controllers, Reclaim Unit, Fire Suppression System (Location: Cambridge, MN Plant)

PAINT LINE HOOK TYPE CONVEYOR SYSTEM, Approx. 250'L (Location: Cambridge, MN Plant)

ROSEMONT INDUSTRIES RFO 10-8 VIBRATORY FINISHER, s/n 2493, 5 HP, 220V (Location: Cambridge, MN Plant)

ALMCO VIBRASHEEN VIBRATORY FINISHER, s/n 625919401, 5 HP (Location: Cambridge, MN Plant)



ITW BGK CUSTOM LUBRICANT APPLICATION SYSTEM



PRECISION QUINCY 5-STAGE WASHER SYSTEM



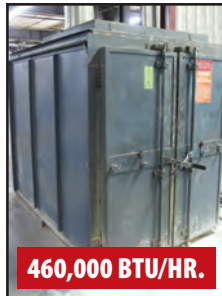
PASS-THROUGH DRY OFF AND CURE OVEN



IONTECH FREE STANDING STAINLESS STEEL MANUAL PAINT BOOTH



IONTECH STAINLESS STEEL PAINT BOOTH, OSCILLATING GUNS



PCP CONTROLLED PYROLYSIS NATURAL GAS CLEANING FURNACE



ROSEMONT INDUSTRIES RFO 10-8 VIBRATORY FINISHER

Sale Closing From:
Thursday, May 17 at 12:00 PM CT

Sale Locations:
Cambridge, MN; Acadia, WI;
Clinton, TN; Fort Wayne, IN

Inspection:
Wednesday, May 16
from 8:00 AM–4:00 PM CT

To discuss your requirements for an auction, please call Perfection Industrial **847.427.3333**

WELDING & TOOLROOM

WELDING

PANASONIC ROBOTIC WELDING CELL W/PANASONIC VR-008P11 MANIPULATOR, Mdl. YA-1 JMR81, 8 kg Max. Payload, VR-008P11 Controller (Location: Cambridge, MN Plant)

ABB PS 90/6-38-P-LSS-3822 ROBOTIC WELDER, s/n 804.71.58220, w/ABB Type RB1400 M974 Control (Location: Cambridge, MN Plant)

150 KVA METHODS MPT1S-30-50 SPOT WELDER, s/n 164, w/Unitrol Solutions 9180D-607 Soft Touch Weld Control (Location: Cambridge, MN Plant)

75 KVA BANNER 2SP075A18 SPOT WELDER, s/n 4144, w/Entron EN1000 Weld Control (Location: Cambridge, MN Plant)

75 KVA BANNER 2CP75A24 SPOT WELDER, s/n 5153, w/Entron EN1000 Weld Control (Location: Cambridge, MN Plant)

70 KVA SPOT WELD SLIM RITE SPOT WELDER, s/n 102405-4, w/Entron EN1000 Weld Control (Location: Cambridge, MN Plant)

(15) MILLER AND LINCOLN MIG AND MULTIPROCESS WELDING POWER SOURCES (Location: Cambridge, MN Plant)

(4) WALTER SURFOX 203 WELD CLEANING SYSTEMS



PANASONIC ROBOTIC WELDING CELL



70 KVA SPOT WELD SLIM RITE SPOT WELDER



150 KVA METHODS MPT1S-30-50 SPOT WELDER



ASSORTED MILLER WELDERS



4 AVAILABLE WALTER SURFOX 203 WELD CLEANING SYSTEM

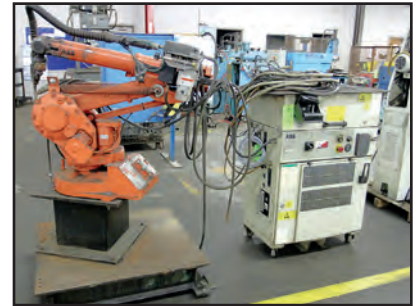


ABB PS 90/6-38-P-LSS-3822 ROBOTIC WELDER



KENT KGS-16S SURFACE GRINDER



CLAUSING 2284 DRILL PRESS



ARBOGA MASKINER U 2508 DRILL/MILL

TOOL ROOM

KENT KGS-616S SURFACE GRINDER, s/n 98065104, w/6" x 14" Kanetsu Permanent Magnetic Chuck (Location: Cambridge, MN Plant)

BRIDGEPORT MILLING MACHINE, 2 HP, DRO (Location: Clinton, TN Plant) Not in running condition.

CLAUSING 2284 DRILL PRESS, s/n 20 531963, w/Flex Arm Tapping Arm (Location: Cambridge, MN Plant)

ARBOGA MASKINER U 2508 DRILLING/MILLING MACHINE, s/n 273734, 8" x 18" Table, Jacobs Chuck (Location: Cambridge, MN Plant)

KALAMAZOO 6" BELT SANDER (Location: Clinton, TN Plant)

KALAMAZOO 4" BELT SANDER, 3 HP (Location: Cambridge, MN Plant)

MULTI-TOOL GF75 3" BELT SANDER, 4 kW (Location: Cambridge, MN Plant)

ROCKWELL 31-710 COMBINATION 12" DISC/6" BELT SANDER, s/n EA4784 (Location: Cambridge, MN Plant)

Online Bidding at www.perfectionindustrial.com

To discuss your requirements for an auction, please call Perfection Industrial 847.427.3333

CRANES, ROLLING STOCK, FACTORY SUPPORT



10-TON

UESCO BRIDGE CRANE

CRANES

10-TON UESCO BRIDGE CRANE SYSTEM, s/n 08-2704, 30' Bridge x 150' Runway, w/Shaw-Box 10-Ton Electric Hoist w/Remote Control (Location: Cambridge, MN Plant)

(2) FREE STANDING GORBEL TYPE CRANE SYSTEMS, Approx. 20' x 20' x 13' H (Erected Crane) w/ Dismantled Crane Beams and (2) Saturn Engineering Motorized Trolleys (Location: Cambridge, MN Plant)

2-TON FREE STANDING BRIDGE CRANE SYSTEM (Location: Clinton, TN Plant)

SINGLE RAIL FREE STANDING CRANE SYSTEM, Approx. 14'T x 35'L Beam, w/R & M Loadmate LM10 Electric Hoist w/Pendant Control (Location: Cambridge, MN Plant)

CUSTOM STEEL INC SINGLE RAIL FREE STANDING CRANE SYSTEM, Approx. 12' Uprights w/40' Main Beam and R & M Loadmate LM10 Electric Hoist w/Pendant Control (Location: Cambridge, MN Plant)

(3) 2-TON COFFING ELECTRIC HOISTS (Location: Cambridge, MN Plant)



2 AVAILABLE

FREE STANDING GORBEL TYPE CRANE SYSTEM



2-TON FREE STANDING BRIDGE CRANE



3 AVAILABLE

2-TON COFFING ELECTRIC HOISTS



SIMON L2034E SCISSOR TYPE MAN LIFT



JLG AM-15 VERTICAL PERSONNEL LIFT



3,500 LB

NISSAN LP FORKLIFT

ROLLING STOCK

3,500 LB NISSAN LP FORKLIFT, Variation-MCP1F1A18LV, Chassis No. CP1F1-9N0783, 130" Lift Height, Side Shift (Location: Cambridge, MN Plant)

BIG JOE SSC 30-130 ELECTRIC REACH TRUCK, s/n 79733, 3,000 Lb Capacity, 130" Lift Height (Location: Cambridge, MN Plant)

SIMON L2034E SCISSOR TYPE MAN LIFT, s/n EDB00831, 20' Max. Platform Height (Location: Cambridge, MN Plant)

JLG AM-15 VERTICAL PERSONNEL LIFT, s/n 9479, 350 Lb Capacity, 15' Max. Platform Height (Location: Cambridge, MN Plant)



SAMUEL P-940 STRAPPING SYSTEM



LIBERTY 4 SERIES 4.4 PALLET WRAPPER

FACTORY SUPPORT

2016 ERIEZ PORTABLE FLUID COALESCER RECYCLING SYSTEM, s/n 4N-201107410, Electric (Location: Cambridge, MN Plant)

QUINCY QSI-245 ROTARY SCREW AIR COMPRESSOR, s/n QSI245ANA31A (Location: Cambridge, MN Plant)

LIBERTY 4 SERIES 4.4 PALLET WRAPPER, s/n 4-962717 (Location: Cambridge, MN Plant)

KALAMAZOO PACKAGING SYSTEMS 830-PM STRETCH WRAPPER, s/n 960804 (Location: Cambridge, MN Plant)

SAMUEL P-940 STRAPPING SYSTEM (Location: Cambridge, MN Plant)

3M-MATIC 700AKS ADJUSTABLE CASE SEALING SYSTEM, s/n 5264 (Location: Cambridge, MN Plant)



2016 ERIEZ PORTABLE FLUID COALESCER RECYCLING SYSTEM



QUINCY QSI-245 AIR COMPRESSOR

Sale Closing From:

Thursday, May 17
at 12:00 PM CT

Sale Locations:

Cambridge, MN;
Acadia, WI; Clinton,
TN; Fort Wayne, IN

Inspection:

Wednesday, May 16
from 8:00 AM
–4:00 PM CT

To discuss your requirements for an auction, please call Perfection Industrial 847.427.3333

MORE AVAILABLE



ASSORTED SQUARE AND ROUND STOCK



H-FRAME
HYDRAULIC
SHOP PRESS

ALSO AVAILABLE: SQUARE AND ROUND STOCK INCL. STAINLESS AND ALLOY, WELDING GUNS AND LEADS, POWER AND HAND TOOLS, STOCK RACKS, HOSES, DISCONNECTS, BUS PLUGS, CIRCUIT PANELS, FUSIBLE SWITCH UNITS, LINE CONTROLS, STORAGE, LEAK TEST STATION, RIGGING EQUIPMENT, PALLET JACKS, HOPPERS, HEAVY DUTY STEEL TABLES, AIR CIRCULATORS, SHOP CARTS, BANDING CARTS, OFFICE FURNITURE AND MUCH MORE

View our current auction schedule at
www.perfectionindustrial.com

TERMS OF SALE

An 18% buyer's premium will be charged on all assets. The buyer's premium will be reduced to 16% for payments made by means of cashier's check or wire transfer within 48 hours of sale close. If paying by company check, a paid in full invoice will be issued upon the check clearing. Credit card payments are limited to a maximum of \$2,000. All items are sold "As is, Where is" without any warranty, express or implied.

REMOVAL

All assets must be removed no later than Friday, June 1. Removal times are Monday through Friday, from 8:00 AM to 4:00 PM CT. Extended hours and weekends may be available with prior appointment. Buyer is responsible for moving all items purchased.

FOR FURTHER INFORMATION

For further information, contact Jennifer Reiner at +1-847-545-6374 or jennifer@perfectionindustrial.com



ASSORTED PALLET
JACKS

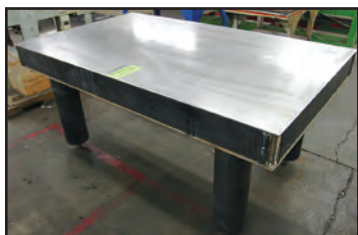


SHOP FANS



BANDING CARTS

To discuss your requirements for an auction, please call
Perfection Industrial 847.427.3333



HEAVY DUTY STEEL TABLES



SOUTHWORTH ELECTRIC LIFT TABLE



SHOP CARTS



ASSORTED DUMP HOPPERS

Sale Closing From: Thursday, May 17 at 12:00 PM CT

Sale Locations: Cambridge, Minnesota; Acadia, Wisconsin; Clinton, Tennessee; Fort Wayne, Indiana

Inspection: Wednesday, May 16 from 8:00 AM-4:00 PM CT



**PERFECTION
Industrial Sales**

Perfection Industrial Sales

ph +1-847-545-6374 • fax +1-847-427-8884

www.perfectionindustrial.com

Sale is Being Held in
Conjunction With:



Online Bidding at www.perfectionindustrial.com

Ph 847-673-0570

www.allinindustrial.com