

# 2 ONLINE AUCTIONS



Surplus to the Ongoing  
Operations of a  
Major U.S. Copier, Printer,  
and Cartridge Manufacturer

**Sale Location:** 12000 Canon Blvd.,  
Newport News, Virginia 23606

## **SALE 1 – PRISTINE AMADA & TRUMPF FAB EQUIPMENT, INSERTION PRESSES, SPOT WELDERS & NORDSON POWDER COAT LINE**

**FEATURING:** 2007 TRUMPF Trumatic 2020R w/SHEETMASTER  
Load Unload, 2002 AMADA Apelio III 357V Punch/Laser,  
(3) AMADA HDS-8025NT Press Brakes, PEMSERTER &  
HAEGER 824 Plus & 412 Insertion Presses, (2) LORS 175AP-  
DV & 11-OAR-1-DV Spot Welders, Full Powder Coat Line w/  
Wash, Dry, NORDSON Powder Booth, Cure Oven, Cantilever  
& Pallet Storage Racks & More

**Sale Closing Date:**  
Wednesday, September 23, 2015  
at 2:00 PM EDT  
**Inspection:** By Appointment Only.  
See information on last page for details.

## **SALE 2 – INJECTION MOLDING & ROBOT AUCTION**

**FEATURING:** 680-Ton ENGEL ES4400/750AH, 650-Ton JSW  
J50EII, (2) 350-Ton SUMITOMO SG350, & 225-Ton ENGEL  
700/250 Injection Molding Machines w/STAR TWS-1000  
FM-4 & TW-1400FM-3 Robots & State-of -the-Art MEGTEC  
Solvent Recovery/Carbon Adsorption System

**Sale Closing Date:**  
Tuesday, October 6, 2015 at 2:00 PM EDT  
**Inspection:** By Appointment Only.  
See information on last page for details.

Online Bidding at [www.perfectionindustrial.com](http://www.perfectionindustrial.com)



**PERFECTION  
Industrial Sales**

Perfection Industrial Sales  
ph 847-427-3333 • fax 847-427-8884  
[www.perfectionindustrial.com](http://www.perfectionindustrial.com)



20-TON TRUMPF TRUMATIC 2020R CNC PUNCHING MACHINE



33-TON AMADA APELIO 357V CNC LASER PUNCH PRESS



(3) 80-TON AMADA HDS-8025NT CNC PRESS BRAKE



# CNC PUNCHING MACHINE, CNC LASER PUNCH PRESS, CNC PRESS BRAKES, INSERTION MACHINES

## SALE 1 – PRISTINE AMADA & TRUMPF FAB EQUIPMENT, INSERTION PRESSES, SPOT WELDERS & NORDSON POWDER COAT LINE

### CNC PUNCHING MACHINE

**20 TON TRUMPF TRUMATIC 2020R CNC PUNCHING MACHINE W/SHEETMASTER COMPACT LOAD/UNLOAD**, S/N A0030A0435, (2007), 100" x 50" Working Range, 1/4" Max. Sheet Thickness, 20 Ton Max. Force, 90m/Min. X-Axis Speed, 60m/Min. Y-Axis Speed, 108m/Min. Simultaneous Speed X and Y, 180 RPM C-Axis, 900 1/Min. Max. Stroke Rate Punching (E=1 min), 2,200 1/Min. Max. Stroke Rate Marking, (19) Tools Linear Magazine, 3.5 Sec. Tool Change Time, Tooling Cartridges and Multiset Included, CE Marked

### CNC LASER PUNCH PRESS

**33 TON AMADA APELIO 357V CNC LASER PUNCH PRESS**, S/N AP357001, (2002), 50" x 72" Travels, (58) Stations, 50" x 144" Worksheet Size (1 Reposition), 220 Max. Sheet Weight, 1968"/Min. Max. Table Speed, 590"/Min. Max. Cutting Speed, 30 RPM Turret Speed, 1.575" Max. Ram Stroke, 220 HPM Max. Punch Rate, (2) Auto Index, 2,000 Watt Fanuc AF2000E Laser, Koolant Kooler HCV10 Chiller, Yuken 150L Hydraulic Unit, Donalson Torit ADF-4 Collection System

**LARGE ASSORTMENT OF AMADA PUNCH TOOLING AND CLAMPING**



(3) 80-TON AMADA HDS-8025NT CNC PRESS BRAKE



(3) 80-TON AMADA HDS-8025NT CNC PRESS BRAKE

### CNC PRESS BRAKES

**(3) 80 TON AMADA HDS-8025NT CNC PRESS BRAKE**, S/N's 82500134, (2003), 82500026, (2001), 82500001, (2000), 102.4" Table Length, 100.4" Max. Bending Length, 87" Between Housings, 16.3" Throat, 7.9" Stroke, 19.7" Open Height, AMNC PC Control, 3-Axis Back Gauge

**LARGE SELECTION OF PRESS BRAKE TOOLING**

### INSERTION MACHINES

**8 TON HAEGER 8249-PLUS-IL INSERTION MACHINE**, S/N 8PL-10721, (2003), 24" Throat, Haeger Modular Autofeed System, 16.4 AMP, 208/240V, 3-Phase

**4 TON HAEGER 412-110 INSERTION MACHINE**, S/N 4HM10596, (2005), 12" Throat, Single-Phase

**3 TON PEMSERTER LT/4 INSERTION MACHINE**, S/N 0321, 10" Throat, 3" Stroke

### Sale Location:

12000 Canon Blvd.,  
Newport News,  
Virginia 23606



8-TON HAEGER 8249-PLUS-IL INSERTION MACHINE



4-TON HAEGER 412-110 INSERTION MACHINE

**SALE 1 –**  
**Closing Date:**  
**Wednesday,**  
**September 23, 2015**  
**at 2:00 PM EDT**

**Inspection:**  
**By Appointment Only.**  
**See information on last**  
**page for details.**

**To discuss your**  
**requirements for an**  
**auction, please call**  
**Perfection Industrial**  
**847.427.3333**



3-TON PEMSERTER LT/4 INSERTION MACHINE



# SPOT WELDERS, POWDER COAT SYSTEM

## SALE 1 –

**Closing Date:**

**Wednesday,  
September 23, 2015  
at 2:00 PM EDT**

**Inspection:**

**By Appointment Only.  
See information on last page  
for details.**



100 KVA LORS 1100AR-I-DV SPOT WELDER

## SPOT WELDERS

**100 KVA LORS 1100AR-I-DV SPOT WELDER**, S/N 1205-7476, 36" Throat, Unitrol 9180L-600E Welding Control

**75 KVA LORS 175AP-DV-R S SPOT WELDER**, S/N 507-7598, 30" Throat, Unitrol 9180L-600E Welding Control

**75 KVA LORS 175AP-DV SPOT WELDER**, S/N 1104-7393, 30" Throat, Unitrol 9180L-600E Welding Control



75 KVA LORS 175AP-DV-R S SPOT WELDER



75 KVA LORS 175AP-DV SPOT WELDER

## POWDER COAT SYSTEM

**PRODUCTION SYSTEMS SINGLE-STAGE PLAFORIZATION AUTOLINE WASHER (2007)**, 27"W x 43"H x 46"L Max. Part Size, 42" x 60" Silhouette Opening, 28'3" L x 11'7" W, Shelco Microguardian Filtration System, Allen Bradley Panelview Plus 1000 Control (2007)

**PRODUCTION SYSTEMS DRY-OFF OVEN AND CURE OVEN (2007)**, Current Setting of 10 Min. @ 400, 32' 1-1/2" L, Cincinnati HDBI-120 Exhaust Fan, 1,500 CFM Quick Purge Exhaust, 1,000 CFM Standard Exhaust, Air Seal, Cure Oven – 21.25 Minutes @ 450 Degree F, 58' L x 15' W, 2.5 Million BTU Natural Gas Burner

**NORDSON XL-2001 ELECTROSTATIC POWDER COATING BOOTH (2007)**, Diagram No. E-000593928, 29' L x 7' 11"W, 5' 9" W Opening, Arrow Dryer, Nordson Excel 2000 Model 2001H Color/Reclaim Module, Single Nordson SureCoat Manual Gun and Control, (4) Versa-Spray Automatic Guns

**APPROX 500' LINEAR CHAIN SYSTEM, 6 FPM**

**Sale Location:**

**12000 Canon Blvd., Newport News, Virginia 23606**

**To discuss your requirements for an auction,  
please call Perfection Industrial 847.427.3333**

**View our current auction schedule at  
[www.perfectionindustrial.com](http://www.perfectionindustrial.com)**



**2007**

PRODUCTION SYSTEMS SINGLE-STAGE PLAFORIZATION AUTOLINE WASHER



**2007**

PRODUCTION SYSTEMS DRY-OFF OVEN AND CURE OVEN



**2007**

NORDSON XL-2001 ELECTROSTATIC POWDER COATING BOOTH

# MISCELLANEOUS PAINT EQUIPMENT, BURN-OFF OVEN, WASH STATION

## SALE 1 –

**Closing Date:** Wednesday, September 23, 2015 at 2:00 PM EDT

**Inspection:** By Appointment Only. See information on last page for details.



DEIMCO 9' X 8' X 101" SPRAY BOOTH



(3) NORDSON HR-16-150 POWDER FEED HOPPERS



POLLUTION CONTROL PRODUCTS PRCIII5954 INDUSTRIAL BURN-OFF FURNACE



PRESSURE ISLAND 6' X 12' POWER WASHING STATION



<  
(3) ITW GEMA AG  
MANUAL ELECTROSTATIC  
POWDER FINISHING SYSTEM  
W/EASY SELECT PAINT GUN  
AND EASTRONIC CONTROL

## Sale Location:

12000 Canon Blvd.,  
Newport News,  
Virginia 23606

## MISCELLANEOUS PAINT EQUIPMENT

(2) NORDSON XL2001 COLOR RECLAIM MODULES  
DEIMCO 9' X 8' X 101" SPRAY BOOTH

(3) NORDSON HR-16-150 POWDER FEED HOPPERS

(3) ITW GEMA AG MANUAL ELECTROSTATIC POWDER  
FINISHING SYSTEM W/EASY SELECT PAINT GUN AND  
EASTRONIC CONTROL

## BURN-OFF OVEN

POLLUTION CONTROL PRODUCTS PRCIII5954 INDUS-  
TRIAL BURN-OFF FURNACE

## WASH STATION

PRESSURE ISLAND 6' X 12' POWER WASHING STATION

**ALSO AVAILABLE:** Cantilever Racks and Heavy Duty  
Steel Rolling Carts



# INJECTION MOLDING MACHINES

## SALE 2 – INJECTION MOLDING & ROBOT AUCTION

**Sale Location:** 12000 Canon Blvd.,  
Newport News, Virginia 23606

### SALE 2 –

**Closing Date:** Tuesday, October 6, 2015 at 2:00 PM EDT

**Inspection:** By Appointment Only. See information on  
last page for details.

### INJECTION MOLDING MACHINES

**680 TON ENGEL ES4400/750 AH INJECTION MOLDER**, S/N 0536/750/98,  
(1998), 93 Oz. Shot Size, 40-1/2" Tie Bar Spacing, 3-1/2" Screw Diameter

**650 TON JSW J50EII INJECTION MOLDER**, S/N 298205201, (1990), 120 Oz.  
Shot Size, 37" Tie Bar Spacing, 3-5/8" Screw Diameter

**350 TON SUMITOMO SG350 INJECTION MOLDER**, S/N 0037, (1990), 29  
Oz. Shot Size, 28" Tie Bar Spacing, 2.5" Screw Diameter



650-TON JSW J50EII INJECTION MOLDER

**350 TON SUMITOMO SG350 INJECTION MOLDER**, S/N 0109, (1990), 29 Oz. Shot Size,  
28" Tie Bar Spacing, 2.5" Screw Diameter

**225 TON ENGEL 700/250 INJECTION MOLDER**, S/N 6394-250-94, 12 Oz. Shot Size,  
22-1/2" Tie Bar Spacing



680-TON ENGEL ES4400/750 AH INJECTION MOLDER



350-TON SUMITOMO SG350 INJECTION MOLDER



350-TON SUMITOMO SG350 INJECTION MOLDER



225-TON ENGEL 700/250 INJECTION MOLDER

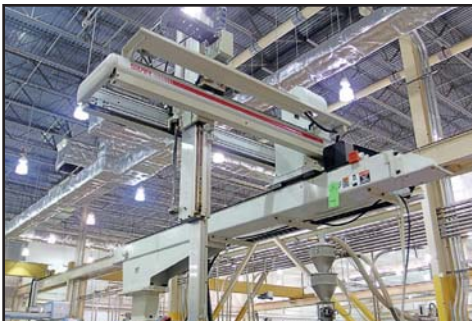
View our current auction schedule at [www.perfectionindustrial.com](http://www.perfectionindustrial.com)



# ROBOTS, SOLVENT RECOVERY SYSTEM/CARBON ADSORPTION SYSTEM



STAR AUTOMATION TW-1400FMII-3 ROBOT



STAR AUTOMATION TW-1400FM-3 ROBOT



STAR AUTOMATION TW-1000FM-3 ROBOT



STAR AUTOMATION TWS-1000 FM-4 ROBOT

## SALE 2 –

**Closing Date:** Tuesday, October 6, 2015  
at 2:00 PM EDT

**Inspection:** By Appointment Only.  
See information on last page  
for details.

## ROBOTS

**STAR AUTOMATION TW-1400FMII-3 ROBOT**, S/N  
T10F-0443, w/STAR STEC-400M Control

**STAR AUTOMATION TW-1400FM-3 ROBOT**, S/N  
T10F-0443, w/STAR STEC-400M Control

**STAR AUTOMATION TW-1000FM-3 ROBOT**, S/N  
T10F-0140, w/STAR STEC-400M Control

**STAR AUTOMATION TWS-1000 FM-4 ROBOT**, S/N  
T10F-0216, w/STAR STEC-400M Control



MEGTEC SOLVENT RECOVERY SYSTEM

**Sale Location:** 12000 Canon Blvd.,  
Newport News, Virginia 23606

## SOLVENT RECOVERY SYSTEM/CARBON ADSORPTION SYSTEM

**MEGTEC SOLVENT RECOVERY SYSTEM (2008)**, Solvent Adsorbing System from Continuous Solvent Laden Air Stream from CVI Mfg Process. Steam Regeneration of a Saturated Absorber Producing a Liquid Water/Solvent. Carbon Adsorption System Consisting of a SLA Fan, (2) Carbon Bed Adsorbers, 5,500 SCFM Each (1 Adsorbing, 1 Regeneration Stand-By), Purge Drying and Cooling System, Regeneration System Consisting of a Steam Header, Steam Flow Control Valve, Adsorber Steam Valves, Distillate Valves, Distillate Duct, Chill Water Cooled Condenser/Sub-Cooler, 3000-Gallon Desorbate Storage Tank and Export Pump, Solvent Loading and Composition - 12.84 Lbs/Hr Monochlorobenzene, 19.87 Lbs/Hr Dimethoxymethane (Methylal), Designed Operating Time - 24 Hrs/Day, 7 Days Per Week, 365 Days/Year



Surplus to the Ongoing Operations of a Major U.S. Copier, Printer, and Cartridge Manufacturer

# 2 ONLINE AUCTIONS

**Sale 1 Closing Date:** Wednesday, September 23, 2015 at 2:00 PM EDT

**Inspection:** By Appointment Only. See information on last page for details.

**Sale 2 Closing Date:** Tuesday, October 6, 2015 at 2:00 PM EDT

**Inspection:** By Appointment Only. See information on last page for details.

### \*INSPECTION

Inspection will be held by appointment only. To schedule an inspection appointment, please contact John Bopp at (708) 606.3240 or via email at John@PerfectionIndustrial.com

### FOR FURTHER INFORMATION

For further information contact John Bopp at (708) 606-3240 or Email: John@PerfectionIndustrial.com

### REMOVAL

All removal will be handled by W.O. Grubb at the buyers expense. Please contact Frank Natale for quotes.

W.O. Grubb, Frank Natale (804) 513-5800  
frankn@wogrubbs.com

**SALE 1:** All items must be removed on or before Friday, October 9.

**SALE 2:** All items must be removed on or before Friday, October 23.

### TERMS OF SALE

**Payment:** An 18% buyer's premium will be charged on all assets. The buyer's premium will be reduced to 15% for payments made by means of cash, cashier's check, company check (with bank letter of guarantee) or wire transfer within 48 hours of sale close. Credit card payments are limited to a maximum of \$2,000. All items are sold "As is, Where is" without any warranties expressed or implied.

To discuss your requirements for an auction, please call Perfection Industrial **847.427.3333**



**PERFECTION  
Industrial Sales**

Perfection Industrial Sales  
ph 847-427-3333 • fax 847-427-8884  
[www.perfectionindustrial.com](http://www.perfectionindustrial.com)

Online Bidding at  
[www.perfectionindustrial.com](http://www.perfectionindustrial.com)