



**PERFECTION**  
Industrial Sales

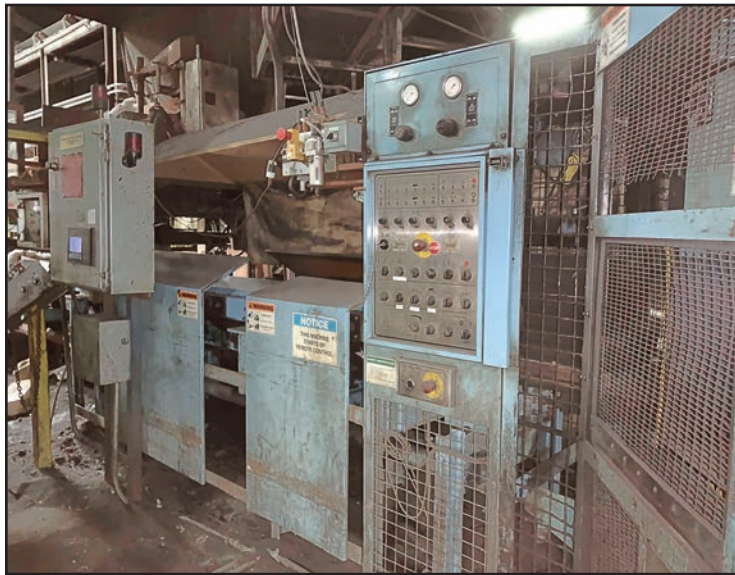
# LIVE WEBCAST AUCTION

**Manchester**  
Metals, LLC

## – DUCTILE & GRAY IRON FOUNDRY FACILITY CLOSURE



AJAX INDUCTION FURNACE SYSTEM



DISA 2110 MK2 MOLDING LINE



LAEMPEL-20 COLD BOX CORE CELL

**FEATURING: INDUCTION  
FURNACE SYSTEMS,  
MOLDING, SHELL CORE  
MACHINES, MIXER &  
CORE STATION, CORE  
CELLS, GRINDERS,  
CONVEYORS, PATTERN  
& MACHINE SHOPS,  
METROLOGY LAB,  
ROLLING STOCK,  
CRANES, MAINTENANCE  
CRIBS & MUCH MORE**

Webcast Bidding  
Available Through

**BidSpotter.com**

**Sale Date:**

**Tuesday, May 14 at 9:00 AM ET**

**Sale Location:**

**205 Wabash Road, North Manchester, Indiana 46962**

**Inspection:**

**Monday, May 13 from 8:00 AM to 4:00 PM ET or by Appointment**



**PERFECTION**  
Industrial Sales

**Perfection Industrial Sales**

ph +1-847-545-6374 • fax +1-847-427-8884

[www.perfectionindustrial.com](http://www.perfectionindustrial.com)

Sale is Being Held in Conjunction With:



[www.pplauction.com](http://www.pplauction.com) • ph 224-927-5320



**World Equipment  
& Machine Sales Co.**

[www.foundry-eqpt.com](http://www.foundry-eqpt.com) • ph 440-519-1745

# INDUCTION FURNACE SYSTEMS, MOLDING LINE, MOLDING MACHINES



**2013**

AJAX INDUCTION FURNACE SYSTEM



**3,000 KW**

## INDUCTION FURNACE SYSTEMS

2013 AJAX 3,000 KW INDUCTION FURNACE SYSTEM, (2) 7.5-Ton Shell Furnaces, Water System

INDUCTOTHERM 1,750 KW INDUCTION FURNACE SYSTEM, s/n 94H-32616-247-11, (1) 7.5-Ton Steel Shell Furnace, Water System

## MOLDING LINE

DISA 2110 MK2 MOLDING LINE, s/n 94.2671, 60'L AMC, SBC, Cyclone



DISA 2110 MK2 MOLDING LINE



INDUCTOTHERM INDUCTION FURNACE SYSTEM

Webcast Bidding  
Available Through

**BidSpotter.com**



**1,750 KW**



OSBORN 3191  
ROTALIFT  
MOLDING  
MACHINE



OSBORN 3161  
ROTALIFT  
MOLDING  
MACHINE



**2 AVAILABLE**

OSBORN  
722-RA  
MOLDING  
MACHINES

## MOLDING MACHINES

OSBORN 3191 ROTALIFT MOLDING MACHINE, s/n 15715-A, w/ Pattern Handler

OSBORN 3161 ROTALIFT MOLDING MACHINE, s/n 17339-G, w/ Pattern Handler

(2) OSBORN 722-RA MOLDING MACHINES, s/n's 17437-D, 16448-F, Pin Lifts, Control

To discuss your requirements for an auction, please call Perfection Industrial **+1-847-545-6374**

# SHELL CORE MACHINES, MIXER & CORE STATION, CORE CELLS

## SHELL CORE MACHINES

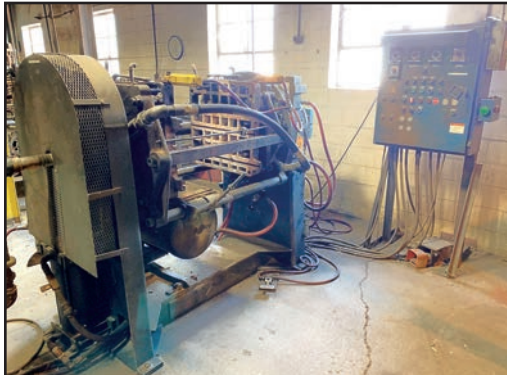
BEARDSLEY & PIPER SF-104-A SHELL CORE MACHINE, s/n CSC-104A-741206

(2) BEARDSLEY & PIPER SF-6CA SHELL CORE MACHINE, s/n's CSC-6759-7302, CSC-6759-7303

## MIXER & CORE STATION

PALMER M-50 MIXER, s/n 177, 180 Degree Swivel, Extended Reach, w/Palmer 8-Station Core Table

DEPENDABLE ELECTRIC SAND HEATER



BEARDSLEY & PIPER SF-104-A SHELL CORE MACHINE



PALMER M-50 MIXER W/8-STATION CORE TABLE

**Sale Location:** 205 Wabash Road  
North Manchester, Indiana 46962



INTERREL MS-1200 SCRUBBER

**2 AVAILABLE**



SHALCO U-180 SHELL BLOWERS

**2 AVAILABLE**



LAEMPE L-20 COLD BOX CORE CELL

## CORE CELLS

LAEMPE L-20 COLD BOX CORE CELL, Pump, Sand Transporter

LAEMPE LKFZ-20 COLD BOX CORE CELL, s/n 827, Mixer, Pump

LAEMPE L-10 COLD BOX CORE CELL W/MIXER

LAEMPE LKFZ-10 COLD BOX CORE CELL, s/n 861, Mixer, Pump

(2) SHALCO U-180 SHELL BLOWERS, Dual Gas, Gun Drilled, w/PLC

INTEREL CORPORATION MS-2500 SCRUBBER, s/n 932

(2) INTEREL CORPORATION MS-1200 SCRUBBERS, s/n's 802, 1039



LAEMPE LKFZ-20 COLD BOX CORE CELL



LAEMPE L-10 COLD BOX CORE CELL



INTERREL MS-2500 SCRUBBER

**Sale Date:** Tuesday, May 14  
at 9:00 AM ET

View our current auction schedule at [www.perfectionindustrial.com](http://www.perfectionindustrial.com)

# GRINDERS, FOUNDRY ROBOTS, VIBRATING & OSCILLATING CONVEYOR, SHOT BLAST, VACUUM SYSTEM

## GRINDERS

**SETCO SPL 923-525-8 SINGLE END GRINDER**, s/n 246391, 30"-18" Wheel Size, 1,210-2,016 Spindle RPM, 25 HP

**CINCINNATI SPL 926-520-8 SINGLE END GRINDER**, s/n 250002, 30" Wheel, 1,210-2,016 Spindle RPM, 15 HP

**CINCINNATI SPL 923-520-8 SINGLE END GRINDERS**, s/n 250001, 30" Wheel, 1,210-2,016 Spindle RPM, 20 HP

**CINCINNATI SPL 923-520-8 SINGLE END GRINDERS**, s/n 249644, 30" Wheel, 1,210-2,016 Spindle RPM, 20 HP



CINCINNATI DOUBLE END GRINDER



CARRIER 30" X 15' OSCILLATING CONVEYOR



CARRIER 36" X 13' VIBRATING CONVEYOR



**REBUILT BY SPINBLAST**

WHEELABRATOR TABLE SHOT BLAST SYSTEM

**CINCINNATI SPL 922-720-8 SINGLE END GRINDER**, s/n 249555, 30" Wheel, 1,590-2,655 Spindle RPM, 20 HP

**CINCINNATI SPL 926-520-8 SINGLE END GRINDER**, s/n 249645, 30" Wheel, 1,210-2,016 Spindle RPM, 20 HP

**CINCINNATI SPL 926-515-8 SINGLE END GRINDER**, s/n 250082, 30" Wheel Size, 1,210-2,016 Spindle RPM, 15 HP

**CINCINNATI SPL 926-515-8 SINGLE END GRINDER**, s/n NA, 15 HP

**CINCINNATI DOUBLE END GRINDER**, 30" Wheels, (2) 20 HP Motors

## FOUNDRY ROBOTS

**(4) ABB IRB6400 6-AXIS FOUNDRY ROBOTS W/HAND HELD TEACH PENDANT CONTROLLER**



**2 AVAILABLE**

CINCINNATI SPL 926-520-8 SINGLE END GRINDER



**2 AVAILABLE**

CINCINNATI SPL 923-520-8 SINGLE END GRINDER



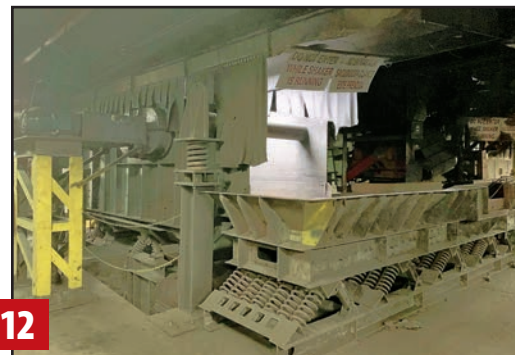
**4 AVAILABLE**

ABB IRB6400 ROBOTS



**2012**

CARRIER SMSO-542405 54' X 18' SHAKEOUT



## VIBRATING & OSCILLATING CONVEYOR

**2012 CARRIER SMSO-542405 SHAKEOUT**, s/n 27825, 54" x 18'L, (2) 15 HP Motors

**CARRIER OSCILLATING CONVEYOR**, s/n 111-3060-P, 30" x 15'L

**CARRIER OSCILLATING CONVEYOR**, s/n NA, 36" x 40'L

**2014 CARRIER XHHI36120S OSCILLATING CONVEYOR**, s/n 28406, 36" x 25'L

**CARRIER VIBRATING CONVEYOR**, s/n 22465, 36" x 13'L, 75 TPH, 5 HP

**GK MOLD DOUBLE DECK DUMP CONVEYOR**, 48" x 18'L

**GK MOLD INCLINED DUMP CONVEYOR**, 36" x 30'L

**GK MOLD DUMP CONVEYOR**, 36" x 100'L

## SHOT BLAST

**WHEELABRATOR TABLE SHOT BLAST SYSTEM**, s/n A94232, 66" Swing Table, 20 HP, Pitless, (Rebuilt by Spinblast)

## VACUUM SYSTEM

**HI-VAC CORP 320CF INDUSTRIAL VACUUM SYSTEM**, s/n HV-5285



HI-VAC CORP 320CF INDUSTRIAL VACUUM SYSTEM

# WATER COOLING SYSTEM, PATTERN SHOP & MACHINE SHOP



ADVANTAGE TTK-3000-3P WATER COOLING SYSTEM

## WATER COOLING SYSTEM

**2013 ADVANTAGE TTK-3000-3P WATER COOLING SYSTEM**, s/n 131518, (2) Reservoirs, Checkmate LE Series Control

## PATTERN SHOP & MACHINE SHOP

**(3) TABOR 16" CUT-OFF SAWS**, Split Adjustable Table, 7.5 and 15 HP

**BEAVER MACHINE VBRP VERTICAL MILL**, s/n 5636/2, 10" x 48" Table, Anilam Wizard DRO

**BRIDGEPORT VERTICAL MILL**, 9" x 42" Table, 80-2,720 RPM Mitutoyo DRO

**WELLS 8-M HORIZONTAL BANDSAW**, s/n 10820

**GROB 4V-24 VERTICAL BANDSAW**, s/n 784, 25" Throat, 28" x 24" Table

**ROCKWELL DELTA 28-290 VERTICAL BANDSAW**, s/n DN8856, 14" x 14" Table, 13.5" Throat

**DAYTON 4TJ91 14" VERTICAL BANDSAW**, s/n 200512, 14" x 14" Table

**DAYTON 1FYX1A 14" VERTICAL BANDSAW**, s/n 201108, 13-3/4" x 14" Table, 3/4 HP

**HAMMOND 100-D-B ABRASIVE BELT GRINDER**, 3400 SFPM, 10" Belt, 21" x 24" Table



BEAVER MACHINE VBRP VERTICAL MILL



BRIDGEPORT VERTICAL MILL



DAYTON 14" VERTICAL BANDSAW



HAMMOND 100-D-8 ABRASIVE BELT GRINDER



DEWALT DW733 12-1/2" THICKNESS PLANER



(OVER 100+) STEEL AND ALUMINUM FLASKS, ASSORTED SIZES



TABOR 16" CUT-OFF SAWS

**DAYTON 49G990A 6" X 9" BELT AND DISC GRINDER**, s/n 01170081, 1 HP

**DAYTON 2LKR8 7" BENCH GRINDER**, s/n 13121773, 1/2 HP, 3,450 RPM

**DEWALT DW733 12-1/2" THICKNESS PLANER**, s/n 200147-CT1750

**BOICE CRANE MONO MASTER 33500 10" TABLE SAW**, s/n 608

**DELTA 31-120 12" DISC SANDER**, s/n 30802420011

**12" DISC SANDER W/RELIANCE 1 HP MOTOR**

**JET DC-1200 DUST COLLECTOR**, s/n 5079586, 2 HP

**DELTA ROCKWELL 20" DRILL PRESS**, s/n 11D 00268, 18" x 20" Table, 10" Throat

**DELTA DP220 BENCH TOP DRILL PRESS**, 7" Throat, 10" x 10" Table

**ROOVERS T10A TAPEWRITER METAL TAPE EMBOSSEING MACHINE**, s/n H106241

**M.S TYLER RO-TAP RX-29 SIEVE SHAKER**, s/n 11481

**MIDWESTERN INDUSTRIES ME24C4-4-1 2-LEVEL VIBRATING SCREEN**, s/n 0214-2008, 3/4 HP

**ANCHOR CEMENT MIXING SYSTEM**



DELTA 31-120 12" DISC SANDER



BOICE CRANE MONO MASTER TABLE SAW



MIDWESTERN INDUSTRIES ME24C4-4-1 VIBRATING SCREEN



ANCHOR CEMENT MIXING SYSTEM



ASSORTED POWER AND HAND TOOLS

**ALSO AVAILABLE:** OVER (100+) STEEL AND ALUMINUM FLASKS OF ASSORTED SIZES, PNEUMATIC TOOLS, POWER TOOLS, ELECTRIC GRINDERS, SAW HORSES, C-CLAMPS, HAND TOOLS, FLAMMABLE LIQUIDS CABINETS, AND MORE

View our current auction schedule at [www.perfectionindustrial.com](http://www.perfectionindustrial.com)

# WELDING, METROLOGY LAB & TEST EQUIPMENT, MAINTENANCE CRIBS

## WELDING

**MILLER TRAILBLAZER 325 WELDER/GENERATOR,** s/n MD351340R

**MILLER SHOPMASTER 300 AC/DC ARC WELDING POWER SOURCE,** s/n KD387461

**MILLER SRH-333 WELDING POWER SOURCE,** s/n HE813869



DETROIT PH-2  
HARDNESS TESTER

WELDING  
POWER SOURCES



LECO GDS500A SPECTROMETER



HAERAUS DATACAST ENTOUCH  
THERMAL ANALYSIS SYSTEM



LAB SCALE AND  
MOISTURE ANALYZER



DIETERT 536-C  
ULTRASONIC SCRUBBER



2014  
GREEN SAND CONTROLS PME-ACTS  
PRECISION TEST STATION



BARNSTEAD  
THERMOLYNE FZB1315M  
MUFFLER FURNACE



DIETERT/  
GEORGE FISCHER  
276-B-MD2  
MOISTURE GAGE



2013  
SIMPSON 42105-ASM  
DIGITAL ABSOLUTE PERMMETER



BUEHLER METASERV 250 POLISHER



NIKON ECLIPSE MA100 MICROSCOPE

## METROLOGY LAB & TEST EQUIPMENT

(3) HERAEUS DATACAST ENTOUCH  
THERMAL ANALYSIS SYSTEM

DETROIT PH-2 HARDNESS TESTER,  
s/n 754

DETROIT DH-1 HARDNESS TESTER,  
s/n 1124

KING PORTABLE BRINELL TESTER,  
s/n NA

2014 GREEN SAND CONTROLS PME-  
ACTS PRECISION TEST STATION,  
s/n ACTS-235

LECO GDS500A SPECTROMETER,  
s/n 3312, PC

BRAIN WEIGHT B1500D LAB SCALE,  
s/n 12226

OHAUS MB45 MOISTURE ANALYZER,  
s/n B543597494

2013 SIMPSON 42105- ASM DIGITAL  
ABSOLUTE PERMMETER, s/n 1213398

DIETERT 536-C ULTRASONIC  
SCRUBBER, s/n 42109B

BARNSTEAD THERMOLYNE FZB1315M  
MUFFLER FURNACE, s/n 1256070236678

DIETERT/GEORGE FISCHER FOUNDRY  
SYSTEMS 276-B-MD2 MOISTURE  
GAGE, s/n 40129

BUEHLER METASERV 250 GRINDER/  
POLISHER, s/n 705-MGT-00450

NIKON ECLIPSE MA100 MICROSCOPE,  
s/n 432299

## MAINTENANCE CRIBS

COMPLETE MAINTENANCE AREAS  
INCLUDING ELECTRICAL PANELS,  
SWITCHES, RELAYS, SOLENOIDS,  
MODULES, SAFETY SWITCHES,  
FUSES, BEARING PILLOW BLOCKS,  
SHEAVES, BUSHINGS, REGULATORS,  
ALLEN BRADLEY AND ATLAS COPCO  
ELECTRONICS AND MUCH MORE

**Sale Date:** Tuesday,  
May 14 at 9:00 AM ET



LARGE  
MAINTENANCE  
CRIBS



# ROLLING STOCK, CRANES, AIR COMPRESSORS & DRYERS

## ROLLING STOCK

**6,000 LB TOYOTA 8FGU30 LP FORKLIFT**, s/n 14392, Triple Mast, 40" Fork Length, Side Shift

**5,000 LB TOYOTA 8FGU25 LP FORKLIFT**, s/n 12916, Double Mast, 40" Fork Length

**4,000 LB TOYOTA 7FGU25 LP FORKLIFT**, s/n 73483, Triple Mast, 40" Fork Length, Side Shift

**BOBCAT S150 SKID STEER LOADER**, s/n NA

**JLG E400AJPN TELESCOPIC BOOM LIFT**, s/n 0300091475

**NILFISK ADVANCE EXTERRA 6330 LP FLOOR SWEEPER**, s/n 1978501

**(2) STRICK 53' SEMI-TRAILERS**, VIN 1S12E9539-WD419803 and 1S12E8538WD429135

## CRANES

**5-TON BREHOB YARD CRANE SYSTEM**, Electric Hoist, Remote Control, Approx 50' Span x 150' Runway

**1-TON CONTRX CRANES FREE STANDING JIB CRANE**, 9' Under Rail, 10' Reach, Coffing JLC Electric Hoist w/Pendant Control

**1/2-TON CONTRX CRANES FREE STANDING JIB CRANE**, 10' Under Rail, 10' Reach, Coffing JLC Electric Hoist w/Pendant Control

**1/4-TON CONTRX CRANES FREE STANDING JIB CRANE**, 8' Under Rail, 10' Reach, w/Endo ELF-40 Spring Balancer

**CONTRX CRANES JIB CRANE**, 7' Reach, w/Coffing JLC Electric Hoist w/Pendant Control

**1/2-TON SNAP TRAC RAIL W/CM SHOPAIR PNEUMATIC HOIST W/PENDANT CONTROL**

**1/4-TON CONTRX CRANE JIB CRANE**, 8' Reach, w/CM ShopAir Pneumatic Hoist w/Pendant Control

**1-TON ABELL-HOWE JIB CRANE**, 7' Reach, w/CM AirStar Pneumatic Hoist w/Pendant Control

**1/4-TON CONTRX CRANES JIB CRANE**, w/CM ShopAir Pneumatic Hoist w/Pendant Control

**WALKER LM57 MAGNET**



TOYOTA 8FGU30 LP FORKLIFT



BOBCAT S150 SKID STEER LOADER



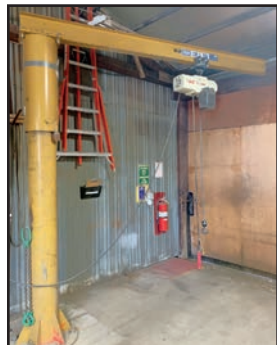
JLG E400AJPN TELESCOPIC BOOM LIFT



STRICK 53' SEMI-TRAILERS



BREHOB 5-TON YARD CRANE SYSTEM



ASSORTED CONTRX JIB CRANES



WALKER LM57 MAGNET



3 AVAILABLE

SILO



ASSORTED MOTORS



HOPPERS

## AIR COMPRESSORS & DRYERS

**100 HP KAESER SFC 90S AIR COMPRESSOR**, s/n 1833, 125 PSIG

**75 HP GARDNER DENVER EBMOLE AIR COMPRESSOR**, s/n U86474, 100 PSIG

**50 HP GARDNER DENVER EBHOJC AIR COMPRESSOR**, s/n X01705, 125 PSIG

**INGERSOLL RAND D4080INA400 REFRIGERATED AIR DRYER**, s/n WCH1023052, 220 MAWP PSIG, R-404A Refrigerant

**KAESER KRD1000 COMPRESSED AIR DRYER**, R-404A Refrigerant, 200 PSIG, 1,000 SCFM

**GREAT LAKES GRD-400 REFRIGERATED AIR DRYER**, s/n 15964-2



KAESER SFC 90S AIR COMPRESSOR



INGERSOLL RAND D4080INA400 REFRIGERATED AIR DRYER

View our current auction schedule at [www.perfectionindustrial.com](http://www.perfectionindustrial.com)



## PERFECTION Industrial Sales

Perfection Industrial Sales – 2550 Arthur Ave., Elk Grove Village, IL 60007  
ph +1-847-545-6374 • fax +1-847-427-8884 [www.perfectionindustrial.com](http://www.perfectionindustrial.com)  
Perfection Industrial Sales, IN Auction License #AC31400046



Presorted  
First Class Mail  
U.S. Postage  
PAID  
Eugene, Oregon  
Permit No. 17

**Featuring: Induction Furnace Systems, Molding, Shell Core Machines, Mixer & Core Station, Core Cells, Grinders, Conveyors, Pattern & Machine Shops, Metrology Lab, Rolling Stock, Cranes, Maintenance Cribbs & Much More**

# LIVE WEBCAST AUCTION

**Sale Date:** Tuesday, May 14 at 9:00 AM ET

**Inspection:** Monday, May 13 from 8:00 AM to 4:00 PM ET or by Appointment



## – DUCTILE & GRAY IRON FOUNDRY FACILITY CLOSURE



AXJAX INDUCTION FURNACE SYSTEM

**Featuring: Induction Furnace Systems, Molding, Shell Core Machines, Mixer & Core Station, Core Cells, Grinders, Conveyors, Pattern & Machine Shops, Metrology Lab, Rolling Stock, Cranes, Maintenance Cribbs & Much More**

# LIVE WEBCAST AUCTION

### TERMS OF SALE

A 16% buyer's premium will be charged on all assets purchased by buyers attending the sale in person, and any Webcast or Online Buyers will be charged an 18% buyer's premium. Acceptable forms of payment are cashier's check, company check (with bank letter of guarantee) or wire transfer within 48 hours of the sale close. For any Buyers failing to pay within the 48-hour stated payment period, the buyer's premium will be increased to 18% (bidders attending the Auction in person) or 21% (Webcast or Online Bidders). Everything will be sold to the highest bidder, in accordance with the Auctioneer's customary "Terms of Sale", copies of which will be posted on the premises of the sale and subject to additional terms announced the day of sale. All items are sold "As is, Where is" without any warranty, express or implied.

### PAYMENT

ALL PURCHASES MUST BE PAID WITHIN 48 HOURS OF THE CLOSE OF SALE. Contact our Accounting team for wire instructions. Only wire transfer or certified check, payable to Perfection Industrial Sales will be accepted. Company checks payable to Perfection Industrial Sales will be accepted only if accompanied by a bank letter of guarantee. All sales are subject to sales tax. Purchasers claiming Sales Tax exemptions must provide proof satisfactory to the Perfection Accounting team to claim such exemptions.

### REMOVAL

All items must be removed no later than Friday, May 31. Removal hours are 8:00 AM to 4:00 PM Monday through Friday. Extended hours and weekends may be accommodated by prior appointment. Anyone removing purchased items with a lift truck or another powered vehicle must have a certificate of insurance with a \$2M General Liability policy, and that certificate must be provided to the auctioneer before removal.

### HOTELS

Hampton Inn Warsaw ..... (574) 268-2600  
115 Robmar Drive, Warsaw, IN 46580  
Holiday Inn Express & Suites Ft. Wayne ..... (260) 459-1888  
5915 Ellison Road, Ft. Wayne, IN 46804  
Hampton Inn Ft. Wayne-Southwest ..... (260) 459-1999  
8219 W Jefferson Blvd., Ft. Wayne, IN 46804

### NEAREST AIRPORT

Fort Wayne International Airport (35 miles from auction site)

### FOR FURTHER INFORMATION

For further information, contact Jennifer Reiner at +1-847-545-6374 or [jennifer@perfectionindustrial.com](mailto:jennifer@perfectionindustrial.com)  
Perfection Industrial Sales, IN Auction License #AC31400046

Webcast Bidding Available Through **BidSpotter.com**

**Sale Date:**

**Tuesday, May 14 at 9:00 AM ET**

**Sale Location:**

**205 Wabash Road, North Manchester, Indiana 46962**

**Inspection:**

**Monday, May 13 from 8:00 AM to 4:00 PM ET or by Appointment**



## PERFECTION Industrial Sales

Perfection Industrial Sales  
ph +1-847-545-6374 • fax +1-847-427-8884  
[www.perfectionindustrial.com](http://www.perfectionindustrial.com)

Sale is Being Held in Conjunction With:



[www.pplauction.com](http://www.pplauction.com) • ph 224-927-5320



**World Equipment  
& Machine Sales Co.**

[www.foundry-eqpt.com](http://www.foundry-eqpt.com) • ph 440-519-1745