



HYUNDAI WIA KH63G HORIZONTAL MACHINING CENTER

**FACILITY CLOSURE –  
LEADING  
MANUFACTURER  
OF NEW PARTS  
FOR ENGINES  
& COMPRESSORS**

**FEATURING:  
CNC VERTICAL &  
HORIZONTAL MACHINING  
CENTERS, CNC TURNING,  
CNC GRINDING,  
CONVENTIONAL MACHINE  
TOOLS, TOOL ROOM,  
FABRICATION, WELDING,  
INSPECTION & FACILITY  
SUPPORT**



MIGHTY VIPER VT-30GL CNC TURNING CENTER



SUPERTEC G38P-60CNC CYLINDRICAL CNC GRINDER

**Sale Closing From:** Tuesday, November 12th at 1:00 PM CT

**Sale Location:** 9615 Ball Street, San Antonio, Texas 78217

**Inspection:** Monday, November 11th from 8:00 AM to 4:00 PM CT or By Appointment



**PERFECTION**  
Industrial Sales

Perfection Industrial Sales  
ph +1-847-545-6374 • fax +1-847-427-8884  
[www.perfectionindustrial.com](http://www.perfectionindustrial.com)

Online Bidding at  
[www.perfectionindustrial.com](http://www.perfectionindustrial.com)

In Conjunction With:



ph +1-844-478-8181 | [SALES@RESELLCNC.COM](mailto:SALES@RESELLCNC.COM)



# CNC TURNING CENTERS, CNC VERTICAL MACHINING CENTERS



2012

MIGHTY VIPER VT-30GL CNC TURNING CENTER



2011

2 AVAILABLE

MIGHTY VIPER VT-27GL CNC TURNING CENTER



2005

KIA HYUNDAI SKT-21-LMS CNC TURNING CENTER



2010

MIGHTY VIPER VMC-1300A VERTICAL MACHINING CENTER

## CNC TURNING CENTERS

**2012 MIGHTY VIPER VT-30GL CNC TURNING CENTER**, s/n 8331108012, 26.8" Swing Over Bed, 18.9" Max. Turning Dia., 82.3" Max. Turning Length, 15" Chuck, 12- Position Turret, 3,500 RPM, 35 HP, Fanuc Series Oi-TD Control, 10,263 Hours

**2011 MIGHTY VIPER VT-27GL CNC TURNING CENTER**, s/n 8331104011, 18.9" Swing, 18.5" Max. Turning Dia., 12" Chuck, 3,500 RPM, 35 HP, 40" Between Centers, 3.3" Bar Capacity, Fanuc Series Oi-TD Control, 11,408 Hours

**2011 MIGHTY VIPER VT-27GL CNC TURNING CENTER**, s/n 8338807012, 18.9" Swing, 18.5" Max. Turning Dia., 12" Chuck, 3,500 RPM, 35 HP, 40" Between Centers, 3.3" Bar Capacity, Fanuc Series Oi-TD Control, 10,263 Hours

**2005 KIA HYUNDAI SKT-21-LMS CNC TURNING CENTER**, s/n SKT211MS0208, 8" Chuck, 4,000 RPM, 20" Between Centers, Live Tooling, Sub-Spindle, 3,000 RPM, 12-Station Turret, Parts Catcher, 25 HP, Fanuc Series TC-11 Control, 28,108 Hours

**CINCINNATI MILACRON CINTURN 2220U-80 CNC LATHE**, s/n 5321U20-90-0111, 20" Chuck, 1,500 RPM, 75 HP, 30" Swing, 80" Between Centers, 10-Position Turret, Through Turn Steady Rest, Acramatic 850 SX Control, w/Manuals, Selection of Tooling and 20" 4-Jaw Chuck, 6,728 Hours

**CINCINNATI MILACRON CINTURN 8U-40 SERIES 1208 CNC LATHE**, s/n 5320U08-91-007, 8" Chuck, 5,000 RPM, 40" Between Centers, 6-ID and 6-OD Position Turret, Through Turn Steady Rest, w/Assorted Tooling, Jaws, and Manuals, Acramatic 850 SX Control, 10,928 Hours,

**CINCINNATI MILACRON 300-T CNC LATHE**, s/n 5320U12-94-003, CNC Universal Lathe, 12" Chuck, 3,500 RPM, 35 HP, 40" Between Centers, 8-ID and 4-OD Position Turret, Through Turn Steady Rest, Assorted Tooling, Jaws, and Manuals, Acramatic 850 SX Control,

**CINCINNATI MILACRON MO 15-C CNC CHUCKING LATHE**, s/n 530C15-86-005, 15" Chuck, 1,600 RPM, 50 HP, 7-Position Upper Turret, 7-Position Lower Turret, Swing Up Tailstock, Acramatic 850 Control, 53,303 Hours

**CINCINNATI MILACRON MO 18-U CNC UNIVERSAL LATHE**, s/n 5305U18-86-007, 18" Chuck, 1,600 RPM, 50 HP, 6-OD and 6-ID Tool Holders, 100" Between Centers, 6"-12" Steady Rest, Acramatic 850 Control, 20,280 Hours

**CINCINNATI MILACRON MO 18-U CNC UNIVERSAL LATHE**, s/n 5305U18-78-009R98, 18" Chuck, 1,600 RPM, 50 HP, 6-OD and 6-ID Tool Holders, 80" Between Centers, 18" Shop Built Steady Rest, Acramatic 2100 Control

## CNC VERTICAL MACHINING CENTERS

**2011 MIGHTY VIPER VMC-1332-AG CNC VERTICAL MACHINING CENTER**, s/n 012241, 6,000 RPM, 35 HP, 51"-X, 31"-Y, 26"-Z, 31.5" x 57" Table, 3,500-Lb. Table Capacity, 24 ATC, CAT 50 Spindle Taper, Hartrul-Fanuc AI200 CNC Control, Chip Blaster High Pressure Coolant System, 19,334 Hours

**2010 MIGHTY VIPER VMC-1300A CNC VERTICAL MACHINING CENTER**, s/n 009340, 6,000 RPM, 30 HP, 50"-X, 24"-Y, 24"-Z, 24" x 55" Table, 3,300-Lb. Table Capacity, 24 ATC, CAT 50 Spindle Taper, Hartrul-Fanuc AI200 CNC Control, Chip Blaster High Pressure Coolant System, 27,227 Hours

**CINCINNATI MILACRON LANCER 1250 CNC VERTICAL MACHINING CENTER**, s/n 7041-A00-98-0030, 6,000 RPM, 20 HP, 50"-X, 30"-Y, 25.9"-Z, 4th Axis 360 Degree Rotary Chuck, 3,300-Lb. Table Capacity, Acramatic 850SX Control



2 AVAILABLE

CINCINNATI MILACRON CINTURN 18-U CNC LATHE



CINCINNATI MILACRON CINTURN 2220U-80 CNC LATHE



CINCINNATI MILACRON LANCER 1250 VERTICAL MACHINING CENTER



# CNC HORIZONTAL MACHINING CENTERS, CNC & CONVENTIONAL CYLINDRICAL GRINDERS

## CNC HORIZONTAL MACHINING CENTERS

**2015 HYUNDAI WIA KH63G CNC HORIZONTAL MACHINING CENTER**, s/n G3641-1306, 8,000 RPM, 30 HP, 40.5"-X, 31.35"-Y, 31.5"-Z, 360 Degrees Rotary Index, Dual 24.75" x 24.75" Pallets, 3,000-Lb. Capacity, CAT 50 Spindle Taper, 90 ATC, Fanuc Series 31i-A Control, 12,885 Hours

**1997 CINCINNATI MILACRON MAXIM 630 CNC HORIZONTAL MACHINING CENTER**, s/n 3632C01-97-0042, 1,600 RPM, 33 HP, 40.4"-X, 31.5"-Y, 31.5"-Z, 360 Degrees Rotary Index, Dual Pallets, 3,000-Lb. Capacity, Cat 50, 80-ATC, Acramatic 950 Control

**1997 CINCINNATI MILACRON MAXIM 630 CNC HORIZONTAL MACHINING CENTER**, s/n 3632C01-97-0036, 1,600 RPM, 33 HP, 40.4"-X, 31.5"-Y, 31.5"-Z, 360 Degrees Rotary Index, Dual Pallets, 3,000-Lb. Capacity, Cat 50, 80-ATC, Acramatic 950 Control

**1993 CINCINNATI MILACRON MAXIM 630 CNC HORIZONTAL MACHINING CENTER**, s/n 3632C01-97-0036, 1,600 RPM, 33 HP, 40.4"-X, 31.5"-Y, 31.5"-Z, 360 Degrees Rotary Index, Dual Pallets, 3,000-Lb. Capacity, Cat 50, 80-ATC, Acramatic 950 Control

## CNC CYLINDRICAL OD GRINDERS

**2014 SUPERTEC G38P-60CNC CNC CYLINDRICAL OD GRINDER**, s/n GP12005, 10" x 30", Marposs Shoulder Probe, Fanuc Series 0i Mate-TD Control

**2007 SUPERTEC G32P-60CNC CNC CYLINDRICAL OD GRINDER**, s/n GP06001, 10" x 30", Marposs Shoulder Probe, Fanuc Series 0i Mate-TD Control

## CYLINDRICAL OD GRINDERS

**NORTON 261 UNIVERSAL OD GRINDER**, s/n 1229, 12" x 60", Steady Rest

**CINCINNATI MILACRON CYLINDRICAL OD GRINDER**, s/n 4V2B1V-29, 5 HP, 10" x 24" with Internal and Radius Grinding Attachments



**2015**

HYUNDAI WIA KH63G HORIZONTAL MACHINING CENTER



**2011**

MIGHTY VIPER VMC-1332-AG VERTICAL MACHINING CENTER



**1997-1993**

**3 AVAILABLE**

CINCINNATI MILACRON MAXIM 630 HORIZONTAL MACHINING CENTER



**2014**

SUPERTEC G38P-60CNC CYLINDRICAL CNC GRINDER



**2007**

SUPERTEC G32P-60CNC CYLINDRICAL OD GRINDER

View our current  
auction schedule at  
[www.perfectionindustrial.com](http://www.perfectionindustrial.com)



# SURFACE GRINDER, ROTARY SURFACE GRINDER, LATHES, HORIZ. & VERT. BANDSAWS, TOOL ROOM MACHINERY



NORTON 261 UNIVERSAL OD GRINDER



BLANCHARD NO 18 ROTARY SURFACE GRINDER



LODGE & SHIPLEY 24" X 120" GEARED HEAD LATHE

## SURFACE GRINDER

KO LEE S618H SURFACE GRINDER, s/n 9467-566, 16" x 18" Magnetic Chuck

## ROTARY SURFACE GRINDER

BLANCHARD NO 18 ROTARY SURFACE GRINDER, s/n 7926, 36" Dia. Magnetic Chuck, 30 HP

## LATHES

CLAUSING COLCHESTER 690 TRIUMPH/15VS GEARED HEAD LATHE, s/n VT1954, 15" Swing, 2,500 RPM, 40" Between Centers, 2-1/8" Through Spindle Bore, Acu-rite Digital Read Out, Taper Attachment, Steady Rest, 3- and 4-Jaw Chucks, Quick Change Tool Post

CLAUSING COLCHESTER GEARED HEAD LATHE, s/n 140509, 4" Swing, 20" Between Centers, 1-1/4" Through Spindle Bore, Tracer Attachment

LODGE & SHIPLEY GEARED HEAD LATHE, s/n 45726, 24" Swing, 1,800 RPM, 20 HP, 2" Through Spindle Bore, 120" Between Centers, Steady Rest

## HORIZONTAL & VERTICAL BANDSAWS

DOALL 1216-A HORIZONTAL BANDSAW, s/n 373-80505, 3 HP, 13" Capacity, 1-1/4" x 13'5" Blade, Automatic Feed/10' Extension Table

DOALL 16-3 VERTICAL BANDSAW, s/n 50-58848, 3 HP, 16" Capacity, 1-1/4" x 13'5" Blade, Power Feed Table



KO LEE S618H SURFACE GRINDER



AMERICAN HOLE WIZARD 4' X 11" RADIAL ARM DRILL



DOALL 16-3 VERTICAL BANDSAW



CLAUSING COLCHESTER 690 TRIUMPH/15VS GEARED HEAD LATHE



DAVIS 15 KEYSEATER



DOALL 1216-A HORIZONTAL BANDSAW



KEARNEY & TRECKER 2CH HORIZONTAL MILL



TRINCO 36-BP2 BLAST CABINET

## TOOL ROOM MACHINERY

AMERICAN HOLE WIZARD 4' X 11" RADIAL ARM DRILL, s/n 65950, Tilting Table

BURGMASER OB09661 AUTO-INDEXING DRILL PRESS, s/n 1990, 6-Spindle

POWERMATIC 1150 17" DRILL PRESS, s/n 315V491, 3/4 HP, Variable Speed, Tilt Table

KEARNEY & TRECKER 2CH HORIZONTAL MILL, s/n 30-6725, 5 HP, Double Overhead Arbor Support, Milling Arbors, Rotary Indexing Head, Boring Head, Adapters

DAVIS 15 KEYSEATER, s/n 15-405, Angle Attachment, 1/16"-1-1/2" Keyways, 20" x 31" Table 12" Max. Height, Tool Cabinet w/Broaches

DC MORRISON KEYSEATER, s/n K-793423

CINCINNATI MILACRON 24" SHAPER, s/n 17552, Multi-Directional Vise

MATTHEWS PRO-POINT 2324 PROGRAMMABLE INDENT LOGO MARKING SYSTEM PNEUMATIC CARBIDE DOT PEN, s/n 74

BURR KING 760 BELT SANDER, 1 HP, 1-1/2" Wide Belt

TRINCO 36-BP2 BLAST CABINET, Dry Grit Blast, 2' x 3" Capacity, Vacuum w/Filter

CHAMP DRILL SHARPENER, 1 HP, Holder



MATTHEWS PRO-POINT 2324 INDENTING SYSTEM

To discuss your requirements for an auction, please call Perfection Industrial  
+1-847-545-6374

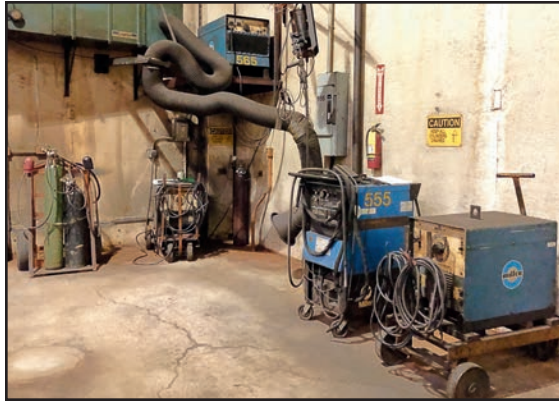
**Sale Closing From:**  
**Tuesday, November 12th**  
**at 1:00 PM CT**  
**Inspection: Monday,**  
**November 11th from**  
**8:00 AM to 4:00 PM CT**  
**or By Appointment**



# HONE, WELDING, INSPECTION, AIR COMPRESSOR, FORKLIFT, & MORE



**SUNNEN MBB1660  
PRECISION HONE**



**ASSORTED WELDERS**



**FARO PLATINUM SERIES 3D MEASUREMENT SYSTEM**



**CATERPILLAR T40D LP FORKLIFT**



**CAT 50 AND 40 TOOL HOLDERS**



**TROYKE DL-12-B 4TH AXIS ROTARY TABLE**



**LARGE ASSORTMENT OF TOOLING**



**KAESER BSD 50T AIR COMPRESSOR**

## HONE

**SUNNEN MBB1660 PRECISION HONE**, s/n 3G1-87298, 1/16"-3" Dia., 1/2 HP

## WELDING

**OXYGEN-ACETYLENE GAS CUTTING CART**, 10" Pneumatic Wheels, Regulators, Torch, Hoses and Attachments (NO TANK)

**(4) MILLER WELDING POWER SOURCES**

**PANDJIRIS 30-6 ROTARY POSITIONING TABLE**, 3,000-Lb. Capacity, 42" Round and 30" Square Tabletop, 1 HP Motor w/.07-1.4 RPM, Swing Radius of 28" at 90 Degree Tilt

**DESPATCH WSC 1-25 ELECTRODE STABILIZING OVEN**, s/n 75265, 500 Degree F, 400-Lb. Max. Load, 18" Electrodes

## INSPECTION

**FARO PLATINUM SERIES 3D MEASUREMENT SYSTEM**, Table Mount and Portable Stand w/Case, Lap Top w/Current Operating Software

**STARRETT GRADE A PRECISION GAGE BLOCKS**, s/n 81-R

**GRANITE SURFACE PLATE TABLE**, 48" x 80" x 12"

**SCHERR TUMICO OPTICAL COMPARATOR**, 14" Dia. Screen, 10-50x Magnification

## AIR COMPRESSOR

**KAESER BSD 50T AIR COMPRESSOR**, s/n 1131, 50 HP, Internal Refrigerated Air Dryer, 250-Gallon Vertical Holding Tank

## FORKLIFT

**CATERPILLAR T40D LP FORKLIFT**, s/n 8EB4252, 4,000-Lb. Capacity, Single Stage, Hard Rubber Tires

## ALSO AVAILABLE

**LARGE ASSORTMENT OF CAT 50 AND CAT 40 TOOL HOLDERS**, 4th Axis Rotary Tables, End Mills, Carbide Inserts, Tooling, Vidmar Ball Bearing Tool Cabinets, Machine Parts, Electronics, Drives, Boards, Monitors, and Much More



**VIDMAR BALL BEARING TOOL CABINETS**



**ASSORTED MACHINE PARTS, ELECTRONICS AND MORE**

**Online Bidding at [www.perfectionindustrial.com](http://www.perfectionindustrial.com)**

**Sale Closing From:** Tuesday, November 12th at 1:00 PM CT

**Sale Location:** 9615 Ball Street,  
San Antonio, Texas 78217

**Inspection:** Monday, November 11th from 8:00 AM  
to 4:00 PM CT or By Appointment

View our current auction schedule at [www.perfectionindustrial.com](http://www.perfectionindustrial.com)



**PERFECTION  
Industrial Sales**

Perfection Industrial Sales – 2550 Arthur Ave., Elk Grove Village, IL 60007

Phone: +1-847-545-6374 – Fax: +1-847-427-8884

[www.perfectionindustrial.com](http://www.perfectionindustrial.com)



Presorted  
First Class Mail  
U.S. Postage  
PAID  
Eugene, Oregon  
Permit No. 17

**Featuring: CNC Vertical & Horizontal Machining Centers,  
CNC Turning, CNC Grinding, Conventional Machine Tools,  
Tool Room, Fabrication, Welding, Inspection & Facility Support**

**ONLINE ONLY  
AUCTION**

**Sale Closing From:** Tuesday, November 12th at 1:00 PM CT

**Inspection:** Monday, November 11th from 8:00 AM to 4:00 PM CT or By Appointment

**FACILITY CLOSURE – LEADING MFR.  
OF NEW PARTS FOR ENGINES & COMPRESSORS**



HYUNDAI WIA KH63G HORIZONTAL MACHINING CENTER

**Featuring: CNC Vertical & Horizontal Machining Centers,  
CNC Turning, CNC Grinding, Conventional Machine Tools,  
Tool Room, Fabrication, Welding, Inspection & Facility Support**

**ONLINE ONLY  
AUCTION**

**FACILITY CLOSURE –  
LEADING MANUFACTURER  
OF NEW PARTS FOR  
ENGINES & COMPRESSORS**

**TERMS OF SALE**

An 18% buyer's premium will be charged on all assets. The buyer's premium will be reduced to 16% for payments made by means of cashier's check or wire transfer within 48 hours of sale close. If paying by company check, a paid in full invoice will be issued upon the check clearing. Credit card payments are limited to a maximum of \$2,000. All items are sold "As is, Where is" without any warranty, express or implied.

**REMOVAL**

All purchased lots must be removed no later than Friday, December 6. Removal hours are Monday through Friday, from 8:00 AM to 4:00 PM CT. Extended hours or weekends may be accommodated with prior appointment. Anyone removing purchased items with a lift truck or another powered vehicle must have a certificate of insurance with a \$2M General Liability policy, and that certificate must be provided to the auctioneer for review and approval prior to the auction.

**FOR FURTHER INFORMATION**

For further information contact Jennifer Reiner at +1-847-545-6374 or [jennifer@perfectionindustrial.com](mailto:jennifer@perfectionindustrial.com).

For accounting and invoicing questions, contact Inesa Dicipetris at +1-847-427-3333 or [inesa@perfectionindustrial.com](mailto:inesa@perfectionindustrial.com).

View our current auction schedule at [www.perfectionindustrial.com](http://www.perfectionindustrial.com)

**Sale Closing From:** Tuesday, November 12th at 1:00 PM CT

**Sale Location:** 9615 Ball Street, San Antonio, Texas 78217

**Inspection:** Monday, November 11th from 8:00 AM to 4:00 PM CT or By Appointment



**PERFECTION  
Industrial Sales**

Perfection Industrial Sales

ph +1-847-545-6374 • fax +1-847-427-8884

[www.perfectionindustrial.com](http://www.perfectionindustrial.com)

Online Bidding at  
[www.perfectionindustrial.com](http://www.perfectionindustrial.com)

In Conjunction With:



ph +1-844-478-8181 | [SALES@RESELLCNC.COM](mailto:SALES@RESELLCNC.COM)