

2 AUCTIONS

LIVE WEBCAST & ONLINE



A Caterpillar Company

MACHINING & FABRICATION FACILITY CLOSURE

FEATURING: (1,000 LOTS) Including
(14) DOOSAN & HAAS Turning Centers as Late
as 2014, Machine Tools, Bucking Machines,
Welding, Metrology Lab, 2018 CAT Telehandler,
(20+) Forklifts, Vehicles, Racking,
Ball Bearing Cabinets, Tools, Paint
Booths, Packaging, Material Handling,
Sea Containers & Plant Support



DOOSAN PUMA 400C CNC TURNING CENTER

2014

AUCTION 1 – LIVE via WEBCAST

SALE DATE

Tuesday, June 8 at 10:00 AM CT

AUCTION 2 – ONLINE AUCTION

SALE CLOSING FROM

Wednesday, June 9 at 10:00 AM CT

LOCATIONS

2733 Industrial Rd. & 2020 Williams Dr.,
Sulphur, OK 73086

INSPECTION

Monday, June 7, by Appointment



GILL 500 BUCKING MACHINE

7" CAPACITY



2010

HAAS TL-4 CNC LONG BED LATHE

**Pre-Auction Offers
Invited on Major Assets**

COMPLETE CATALOG & INFORMATION: <https://perfection.global/kempersulphur>



Perfection Industrial Sales
ph +1-847-545-6374 • fax +1-847-427-8884
www.perfectionindustrial.com

Bidding Available Through
BidSpotter.com

(14) TURNING CENTERS, BUCKING MACHINES



(1 OF 2) DOOSAN PUMA 400C CNC TURNING CENTERS



(1 OF 5) DOOSAN PUMA 400B CNC TURNING CENTERS



(1 OF 5) DOOSAN PUMA 400B CNC TURNING CENTERS

(14) TURNING CENTERS

2014 DOOSAN PUMA 400C CNC TURNING CENTER, s/n ML0127-004577, w/FANUC i-Series Control, (2) 20" 3-Jaw Front and Rear Chucks, 27.5" Swing, 44" Centers, 21.6" Max. Dia., 12-Position Turret, Programmable Tailstock

2011 DOOSAN PUMA 400C CNC TURNING CENTER, s/n ML0127-004473, w/FANUC i-Series Control, (2) 20" 3-Jaw Front and Rear Chucks, 27.5" Swing, 44" Centers, 21.6" Max. Dia., 12-Position Turret, Programmable Tailstock

2012 DOOSAN PUMA 400B CNC TURNING CENTER, s/n ML0126-004634, w/FANUC i-Series Control, (2) 20" 3-Jaw Front and Rear Chucks, 30.3" Swing, 44.7" Centers, 21.7" Max. Dia., 12-Position Turret, Programmable Tailstock

2012 DOOSAN PUMA 400B CNC TURNING CENTER, s/n ML0126-004610, w/FANUC i-Series Control, 16" 3-Jaw Chuck, 30.3" Swing, 44.7" Centers, 21.7" Max. Dia., 12-Position Turret, Programmable Tailstock

2007 DOOSAN PUMA 400B CNC TURNING CENTER, s/n PM352999, w/FANUC 21i-TB Control, 19" 3-Jaw Chuck, 30.3" Swing, 44.7" Centers, 21.7" Max. Dia., 12-Position Turret, Programmable Tailstock

(2) DOOSAN PUMA 400B CNC TURNING CENTERS, s/n PM351894 (2005), PM351685 (2004), w/FANUC 21i-TB Control, 21" 3-Jaw Chuck, 30.3" Swing, 44.7" Centers, 21.7" Max. Dia., Programmable Tailstock, 12-Position Turret

2011 DOOSAN PUMA 480 CNC TURNING CENTER, s/n ML0144-0003217, FANUC i-Series Control, (2) 18" 3-Jaw Front and Rear Chucks, 35.4" Max. Swing, 26" Max. Dia., 39" Turning Length, Programmable Tailstock, 12-Position Turret

2010 HAAS TL-4 CNC LONG BED LATHE, s/n 3086030, w/HAAS Control, (2) 24" 3-Jaw Front and Rear Chucks, 10.75" Hole, 35" Max. Dia., 91" Centers, 35" Swing Over Apron, 10-Position Turret

2011 HAAS SL-40 CNC TURNING CENTER, s/n 3087659, w/HAAS Control, (2) 20" 3-Jaw Front and Rear Chucks, 6" Hole, 40" Swing, 25" Max. Dia., 44" Turning Length, 10-Position Turret

2011 HAAS SL-40 CNC TURNING CENTER, s/n 3087636, w/HAAS Control, 20" 3-Jaw Chuck, 6" Hole, 40" Swing, 25" Max. Dia., 44" Turning Length, 10-Position Turret

(2) 2008 HAAS SL-40 CNC TURNING CENTERS, s/n 3082093, 3080644, w/HAAS Control, (2) 20" 3-Jaw Front and Rear Chucks, 6" Hole, 25.5" Max. Dia., 44" Turning Length, 40" Swing Over Bed, 10-Position Turret

2000 DAEWOO PUMA 300C CNC TURNING CENTER, s/n PM250796, w/FANUC 21i-T Control, 12" 3-Jaw Chuck, 4" Hole, 15.7" Max. Dia., 24.8" Turning Length, 22.4" Swing Over Bed, 10-Position Turret

BUCKING MACHINES

(2) GILL 500 7" BUCKING MACHINES, s/n 500SM 1152, 500SM 1151

GILL 50 HP HYDRAULIC POWER UNIT



(1 OF 5) DOOSAN PUMA 400B CNC TURNING CENTERS



(1 OF 4) HAAS SL-40 CNC TURNING CENTERS



DOOSAN PUMA 480 CNC TURNING CENTER



GILL 500 7" BUCKING MACHINE



(1 OF 4) HAAS SL-40 CNC TURNING CENTERS



GILL 50 HP HYDRAULIC POWER UNIT

**Complete Catalog
& Information Available at**
<https://perfection.global/kempersulphur>

**Pre-Auction Offers
Invited on Major Assets**

BANDSAWS, MISCELLANEOUS MACHINERY, WELDING DEPARTMENT,



DOALL C310 DUAL COLUMN HORIZONTAL BANDSAW



DOALL C-305 NC 10" HORIZONTAL BANDSAW



HEM V100LM3 VERTICAL BANDSAW



HAAS VF2 VERTICAL MACHINING CENTER



SUMMIT V-242B
VERTICAL MILL



OSTER 716 6" THREADER



OSTER 716 6" THREADER



EDWARDS 65-TON IRONWORKER



ECONOLINE BLAST CABINET



LS INDUSTRIES DUAL WHEEL
TUMBLE BLAST SYSTEMS

BANDSAWS

DOALL C310 DUAL COLUMN HORIZONTAL BANDSAW, s/n 583-07113, w/PLC Control, 12" Capacity, Clamping

DOALL C-305 NC 10" HORIZONTAL BANDSAW, s/n 581-06104, w/UniOp Control, Clamping

SUMMIT 9" X 16" HORIZONTAL BANDSAW, s/n NA

2011 COSEN MH-1016JA HORIZONTAL BANDSAW, s/n 1000525

DAYTON 4YG31 9" X 16" HORIZONTAL BANDSAW, s/n 8806

HEM V100LM3 VERTICAL BANDSAW, s/n NA, w/18" x 22" Capacity, 5 HP

MISCELLANEOUS MACHINERY

2000 HAAS VF2 VERTICAL MACHINING CENTER, s/n 22348, w/36" x 14" Table, Travels: X-30", Y-16", Z-20", 20-Station ATC, CAT 40 Taper, 20 HP

SUMMIT V-242B VERTICAL MILL, s/n 3354, w/Power Feed Table, NEWALL DP700 DRO

ARBOGA MASKINER ER 1830 3' RADIAL DRILL, s/n 249346, w/8" Dia. Column, 100-1,085 RPM

(2) OSTER 716 6" THREADERS, s/n SR-52, YE-69

EDWARDS 65-TON IRONWORKER, s/n 4906508

C & M 300 VIBRATORY FINISHER, s/n NA, Single Phase, 3,450 RPM, 1 HP

(2) LS INDUSTRIES DUAL WHEEL TUMBLE BLAST SYSTEMS, s/n NA, w/(2) 10 HP Wheels

LANDA SJ-150A HEATED AUTOMATIC PARTS WASHER, s/n P1005-110815, 50 PSI, 104-Gallon Tank Capacity

HYDRO-BLAST HEATED AUTOMATIC PARTS WASHER, s/n NA

MBA MEDIA BLAST N-200 4836 BLAST CABINET, s/n 32071002

ECONOLINE BLAST CABINET W/COLLECTION SYSTEM

AUCTION 1 –
4 LIVE via WEBCAST

2 AVAILABLE

LOCATIONS 2733 Industrial Road
& 2020 Williams Drive, Sulphur, OK 73086

TELEHANDLER & FORKLIFTS, ROLLING STOCK, QUALITY CONTROL



9 AVAILABLE

MILLER XMT 350 MIG WELDERS



11 AVAILABLE

LINCOLN 350MP MIG WELDERS



WELDING SUPPORT EQUIPMENT

TELEHANDLER & FORKLIFTS

2018 CATERPILLAR TL1055 TELEHANDLER, s/n ML501477, w/10,000 Lb Capacity, 55' Reach

LINDE H30D 6,000 LB DIESEL FORKLIFT, s/n 551H0103730

TOYOTA 7FGU35 8,000 LB LP FORKLIFT, s/n 62804, w/3-Stage Mast, Side Shift

HYSTER H50XM 5,000 LB LP FORKLIFT, s/n H177B48034B, w/3-Stage Mast, Side Shift

(3) TOYOTA 7FGCU25 5,000 LB LP FORKLIFTS, s/n 93534, 75725, 65458, w/3-Stage Mast, Side Shift

(3) NISSAN 50 5,000 LB LP FORKLIFTS, s/n C445462, KAPH02-001070, KAPH02901717, w/Side Shift

(2) TOYOTA 8FGCU25 5,000 LB LP FORKLIFTS, s/n 26922, 10591, w/3-Stage Mast, Side Shift

(7) TOYOTA 8FGCSU20 4,000 LB LP FORKLIFT, w/3-Stage Mast, Side Shift, NOTE: s/n's Posted in Catalog

NISSAN/UNICARRIER CPJ01A15PV 3,000 LB LP FORKLIFT, s/n CPJ01-9N4120, w/3-Stage Mast, Side Shift

ROLLING STOCK

SKYJACK SJKB-33N ARTICULATED BOOM LIFT, s/n 900142, w/500 Lb Capacity, 33' Platform Height

SKYJACK SJIII 3219 SCISSOR LIFT, s/n 22018104, w/500 Lb Capacity, 19' Platform Height

KUBOTA B2150/LA350A 4X4 LOADER TRACTOR, w/Box Blade, Finish Mower

WELDING DEPARTMENT

MILLER BOBCAT 225 8,000W WELDER GENERATOR, s/n KK157578, w/Trailer and Gang Box

(9) MILLER XMT 350 MULTIPROCESS MIG WELDERS, w/Miller 70 Series Dual Spool Wire Feed

(9) LINCOLN 350MP POWER MIG WELDERS

MILLER DIMENSION 302 MIG WELDER, w/Miller 70 Series Wire Feed

MILLER THUNDERBOLT XL 300/200 AMP WELDING POWER SOURCE

MILLER MILLERMATIC 251 MIG WELDER

LINCOLN 255 POWER MIG WELDER

LINCOLN 216 POWER MIG WELDER

HYPERTHERM POWERMAX 1000 PLASMA POWER SOURCE

PLASMA 4' X 8' CUTTING TABLE W/THERMAL DYNAMICS CUTMASTER A120 POWER SUPPLY

(2) PRESTON EASTIN PA-5MT WELDING POSITIONER, s/n 537, 501

2018 LJ WELDING AUTOMATION HD2L-150 AND HD2L-100 PIPE ROLLER STANDS, s/n 240 and 367, w/4,000 Lb Capacity

(2) 2017 LJ WELDING AUTOMATION HD2L-150 AND HD2L-100 PIPE ROLLER STANDS, s/n 241 and 374, s/n 237 and 368, w/4,000 Lb Capacity

JANCY ROTO STAR III WELDING POSITIONER, s/n 2546

MBC BP-2 BENCH TOP WELDING POSITIONER

(2) MATHEY DEARMAN MAGNACUT XM PIPE AND PLATE CUTTING/BEVELING MACHINE, s/n M76746, M21379

ALSO: BEETLE TRACK TORCHES, ELECTRODE OVENS, OXY/ACE TORCH SETS, PIPE STANDS, (50+) HD WELDING TABLES, PROTECTIVE CLOTHING, WELDING CONSUMABLE SUPPLIES, ETC.



HYSTER H50XM 5,000 LB LP FORKLIFT

CATERPILLAR TL1055D TELEHANDLER



2010



TOYOTA 7FGU35 8,000 LB LP FORKLIFT



KUBOTA B2150/LA350A 4X4 LOADER TRACTOR



MITUTOYO PH-350 PROFILE PROJECTOR

QUALITY CONTROL

MITUTOYO PH-350 PROFILE PROJECTOR, s/n 556

MITUTOYO 24" ABSOLUTE DIGIMATIC HEIGHT GAGE

(8) PARKER DA-400 AND B-100 CONTOUR PROBE COMPACT AC/DC YOLKS W/WT-10 TEST BAR AND ULTRAVIOLET LIGHT

(7) LORIMER HIGH PRESSURE/LOW PRESSURE PUMP TESTING SYSTEMS

ALSO: HARDNESS TESTERS, GRANITE SURFACE PLATES, GAGE BLOCKS, VERNIERS, MICROMETERS, PROTRACTORS, RADIUS GAGE SETS, SURFACE ROUGHNESS GAGES, TELESCOPING GAGES, THREAD GAGES, ADJUSTABLE PARALLELS, DIAL INDICATORS, ETC.

SALE DATE Tuesday, June 8 at 10:00 AM CT

FACTORY SUPPORT EQUIPMENT, VEHICLES & MORE



27 AVAILABLE

DAYTON 1/2-TON FREE STANDING JIB CRANES



27 AVAILABLE

GORBEL 1/2-TON FREE STANDING JIB CRANES



11 AVAILABLE

DAPRA TECHNOMARK MULTI 4-V2 MARKING SYSTEM



INGERSOLL RAND 2000E25 25 HP TANK MOUNT AIR COMPRESSOR



2010

ATLAS COPCO GX5 FF AIR COMPRESSOR



GATES POWER CRIMP 707 HOSE CRIMPING MACHINE

8 AVAILABLE

ITP 2-TON SINGLE GIRDER BRIDGE CRANES



VARI-SPEED

ATLAS COPCO GA18VSD FF 24 HP VARI-SPEED AIR COMPRESSOR



2011

ATLAS COPCO QA15P 20 HP AIR COMPRESSOR



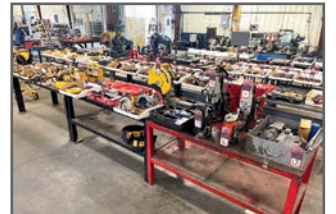
VARI-SPEED

2008 ATLAS COPCO GA11VSD 15 HP VARI-SPEED AIR COMPRESSOR



2011

ATLAS COPCO GA11P 15 HP AIR COMPRESSOR



VIEW OF POWER TOOLS



VIEW OF MISCELLANEOUS ITEMS

FACTORY SUPPORT EQUIPMENT

ATLAS COPCO GA18VSD FF 24 HP VARI-SPEED AIR COMPRESSOR, s/n NA

2011 ATLAS COPCO QA15P 20 HP AIR COMPRESSOR, s/n API319303

2008 ATLAS COPCO GA11VSD 15 HP VARI-SPEED AIR COMPRESSOR, s/n API162305

2011 ATLAS COPCO GA11P 15 HP AIR COMPRESSOR, s/n API318428

2010 ATLAS COPCO GX5 FF AIR COMPRESSOR, s/n CAI402942, w/Built-In Air Dryer

INGERSOLL RAND 2000E25 25 HP TANK MOUNT AIR COMPRESSOR, s/n 051C310239, w/120-Gallon Air Tank

INGERSOLL RAND TS5 5 HP VERTICAL TANK MOUNT AIR COMPRESSOR, s/n 986602, w/80-Gallon Air Tank

SPEEDAIRE 4ME97A 5 HP VERTICAL TANK MOUNT AIR COMPRESSOR, s/n L8/26/10-00045, w/60-Gallon Air Tank

GATES POWER CRIMP 707 HOSE CRIMPING MACHINE

(8) ITP 2-TON SINGLE GIRDER BRIDGE CRANES, w/ Harrington 2-Ton Electric Hoist, Various Spans

(27) GORBEL AND DAYTON 1/2-TON FREE STANDING JIB CRANES

(11) DAYTON, CM LODESTAR AND HARRINGTON 1/2-TON ELECTRIC HOISTS

(7) LORIMER HIGH PRESSURE/LOW PRESSURE PUMP TESTING SYSTEM

MAXIMATOR AIR DRIVEN LIQUID PUMP AND HIGH-LOW PRESSURE TESTERS

RAD TORQUE SYSTEMS HYDRAULIC POWER PUMP

(11) DAPRA TECHNOMARK MULTI 4-V2 MARKING SYSTEMS, s/n's Posted in Catalog

POWER-PACKER POWER GEAR 2.6 HP HYDRAULIC PUMP SYSTEM

ALSO: POWER, AIR AND HAND TOOLS, TOOL CHESTS, VISES, CHUCKS, JAWS, DURABLE AND PERISHABLE TOOLING, TORCH CARTS, PIPE STANDS, AIR TANKS AND MUCH MORE

VEHICLES

2000 FREIGHTLINER SLEEPER CAB HIGHWAY TRACTOR, VIN 1FUJA3CG01PG51807

FORD F-550 SUPER DUTY DIESEL FLAT RACK TRUCK, VIN 1FDAF56F3YEA88693

DODGE 3500 DUALY CREW CAB PICKUP TRUCK, VIN 3D7ML49A87G826621, 5-Speed Manual Transmission, Missing Tailgate

2007 GMC SIERRA TEXAS EDITION PICKUP TRUCK, VIN 2GTEC13J581239891, Crew Cab

2006 CHEVROLET SILVERADO LS CREW CAB PICKUP TRUCK, VIN 2GCEC13C271532423

ALSO: ASSORTED GOOSENECK AND ENCLOSED TRAILERS

AUCTION 1: LIVE VIA WEBCAST

SALE DATE

Tuesday, June 8 at 10:00 AM CT



FREIGHTLINER SLEEPER CAB HIGHWAY TRACTOR



FORD F-550
SUPER DUTY
DIESEL
FLAT RACK
TRUCK



GMC SIERRA
TEXAS
EDITION
PICKUP TRUCK



CHEVROLET SILVERADO LS CREW CAB
PICKUP TRUCK



2009

VINTAGE
TRI-AXLE
GOOSENECK
TRAILER



FEATHERLITE
T/A
GOOSENECK
VALVE REPAIR
TRAILER

**Pre-Auction Offers
Invited on Major Assets**

2 AUCTIONS – LIVE WEBCAST & ONLINE

LOCATIONS 2733 Industrial Road & 2020 Williams Drive, Sulphur, OK 73086
INSPECTION Monday, June 7, by Appointment

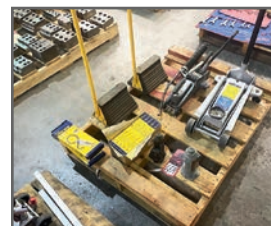
AUCTION 2: ONLINE AUCTION

SALE CLOSING FROM

Wednesday, June 9 at 10:00 AM CT

OVER 400 LOTS

LARGE QUANTITY OF PALLET RACKING, SELF DUMPING HOPPERS, PALLET JACKS, BALL BEARING TOOL CABINETS, TOOL CHESTS, FLAMMABLE LIQUIDS STORAGE CABINETS, HYDRAULIC JACKS, PRESSURE WASHERS, POWER TOOLS, ASSORTMENT OF SHOP FANS & SWAMP COOLERS, TORPEDO HEATERS, HOISTS, SEA CONTAINERS, LADDERS, CARTS & MUCH MORE





**PERFECTION
Industrial Sales**

Perfection Industrial Sales –2550 Arthur Ave., Elk Grove Village, IL 60007
Phone: +1-847-545-6374 – Fax: +1-847-427-8884
www.perfectionindustrial.com



Presorted
First Class Mail
U.S. Postage
PAID
Eugene, Oregon
Permit No. 17

4 AUCTIONS LIVE WEBCAST & ONLINE



MACHINING & FABRICATION FACILITY CLOSURE

A Caterpillar Company



DOOSAN PUMA 400C CNC TURNING CENTER

4 AUCTIONS LIVE WEBCAST & ONLINE

AUCTION 1 – LIVE via WEBCAST

SALE DATE

Tuesday, June 8 at 10:00 AM CT

AUCTION 2 – ONLINE AUCTION

SALE CLOSING FROM

Wednesday, June 9 at 10:00 AM CT

LOCATIONS

2733 Industrial Rd. & 2020 Williams
Dr., Sulphur, OK 73086

INSPECTION

Monday, June 7, by Appointment

TERMS OF SALE

An 18% Buyer's Premium will be charged on all assets purchased by buyers providing full payment is made within 48 hours following the sale. Acceptable forms of payment are cashier's check, company check (with bank letter of guarantee) or wire transfer within 48 hours of the sale close. For any Buyers failing to pay within the 48 hour stated payment period, the Buyer's Premium will be increased to 20%. All invoices paid with a credit card are subject to a 20% Buyer's Premium. Everything will be sold to the highest bidder, in accordance with the Auctioneer's customary "Terms of Sale", copies of which will be posted on the Auctioneer's website and subject to additional terms announced the day of sale. All items are sold "As is, Where is" without any warranty, express or implied.

REMOVAL

All items must be removed no later than Wednesday, June 30. All removal is strictly on an appointment only basis. Anyone removing purchased items with a lift truck or another powered vehicle must have a certificate of insurance with a \$2M General Liability policy, the policy must include a Worker's Compensation rider, and that certificate of insurance must be provided to the auctioneer for review and approval prior to the auction.



A Caterpillar Company

MACHINING & FABRICATION FACILITY CLOSURE

FOR FURTHER INFORMATION

Please contact Jennifer Reiner at 1+ 847+545-6374
or jennifer@perfectionindustrial.com

Complete Catalog & Information Available at <https://perfection.global/kempersulphur>



**PERFECTION
Industrial Sales**

Perfection Industrial Sales
ph +1-847-545-6374 • fax +1-847-427-8884
www.perfectionindustrial.com

Bidding Available Through

BidSpotter.com