

Assets Surplus to

HALLIBURTON FROM MULTIPLE PLANTS IN TEXAS, OKLAHOMA & LOUISIANA



HYDMECH H-22A HORIZONTAL BANDSAW

FEATURING: Turning Centers,
Breakout Machine, Grinders,
Horizontal Bandsaw,
Press Brake,
Miscellaneous Machine Tools,
Induction Scanner System,
Heat Treat, Finishing, Welding,
Plant Support & More

*Pre-Auction Offers
Invited on Major Assets*



MORI SEIKI MT3500S/3500 CNC TURNING CENTER



MORI SEIKI NT4300 DCG CNC TURNING CENTER

Sale Closing Date: Wednesday, September 2 at 12:00 PM CT

Sale Locations: (7) Plant Locations – See Website for Listing

Inspection: Tuesday, September 1, by Appointment Only

TURNING CENTERS, BREAKOUT MACHINE, GRINDERS

TURNING CENTERS

(2) 2006 MORI SEIKI NT4300 DCG CNC LATHES, s/n NT430FH0010 and NT430FH0013, (2) 12" 3-Jaw Chucks, 60" Centers, MSX-711 III CNC Control, Omni Rest

(2) 2006 MORI SEIKI MT3500S/3500 CNC LATHES, s/n MT351FA0005 and MT351FA0006, (2) 12" 3-Jaw Chucks, 125" Center to Center, 120 ATC, Capto/HSK Taper, MSX-501 CNC Control, Chiller, Omni Rests

2006 WEILER E50 X 2000 CNC LATHE, s/n BF04, 15" 4-Jaw Chuck, 85" Centers, Siemens CNC Control, Chip Conveyor, Coolant System, Aloris Toolpost, Steady Rest is NOT Included

2001 GURUTZPE B1400/3 5000 CNC LATHE, s/n 1.54-8011, 50" x 220" Capacity, 38" **Over X** Slide, 30" 3-Jaw Chuck, 12-Position Turret, 20" Omni Rest, Fanuc 16i-T CNC Control, 5" Boring Bar Holder w/Slide

2000 MAZAK ST50N CNC LATHE, s/n 153928, 22" 3-Jaw Chuck, 9" Hole, 50" Max. Chuck to Turret, Tooleye, Fusion CNC Control, Chip Conveyor/Coolant System, Missing Power Supply

2005 MORI SEIKI MT2500S/1500 CNC LATHE, s/n MT251EL0126, (2) 10" 3-Jaw Chucks, 60" Centers, Omni Rest, MSX-501 CNC Control, Chip/Coolant System, Cooljet Coolant System, 110 ATC



2 AVAILABLE
MORI SEIKI NT4300 DCG CNC TURNING CENTER



2 AVAILABLE
MORI SEIKI MT3500S/3500 CNC TURNING CENTER

1997 MORI SEIKI ZL-45 CNC LATHE, s/n 167, 19" 3-Jaw Chuck, 60" Center Distance, MSD-516 CNC Control, (2) Turret w/12-Position and 10-Position, 50 HP, 3.6" Hole

1998 MAZAK INTEGREX 30 CNC LATHE, s/n 137931, 12" 3-Jaw Chuck, 48" Center Distance, Mazatrol T Plus CNC Control, 40 ATC (Cat 40), Tool Eye, Missing a Power Supply

1991 MORI SEIKI SL65A CNC LATHE, s/n 979, 16" 3-Jaw Front Power Chuck, 15" 6-Jaw Rear Manual Chuck, 40" Centers, Moric-T4f (Fanuc) CNC, 12-Position Turret, Chip Conveyor/Coolant System

CINCINNATI 15U CNC LATHE, s/n 5305U1580023, 15" 3-Jaw Chuck, 108" Centers, Crown and Upper Turrets, Fanuc 15 CNC Control, Daniluk Rebuild, (6) Steady Rests

All buyers must use rigging companies specified by Halliburton. A list of approved riggers per facility can be found on the Perfection Industrial Sales website and will be included w/all invoices.



2006
WEILER E50 X 2000 CNC LATHE



2001
GURUTZPE B1400/3 5000 CNC LATHE



2000
MAZAK ST50N CNC LATHE



2010
NOV TORQUEMASTER BREAKOUT MACHINE



52" BULLARD VERTICAL GRINDER



2013
RITEWAY CNC VERTICAL GRINDER



2013
REMCO GY200 RUBBER ROLL GRINDER/LATHE



2010
SUPERTEC STC2008NC CENTERLESS GRINDER

BREAKOUT MACHINE

2010 NOV TORQUEMASTER BREAKOUT MACHINE, s/n 10083-FLJ/1689-607, 12" Capacity, Hydraulic Push/Pull Cylinder, Control Cabinet, Support Jacks

GRINDERS

2013 REMCO GY 200 RUBBER ROLL GRINDER/LATHE, s/n GY216x60-1960-480-A13, 16" x 60" Center Capacity, 12" 3-Jaw Chuck, 10 HP Grinding Wheel, 2" Through Spindle Hole

2010 SUPERTEC STC2008NC CENTERLESS GRINDER, s/n CB10008, New, Never Installed, 8" Wheel Width, 20 HP

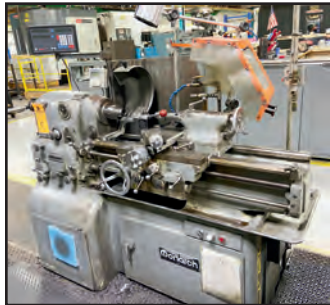
52" BULLARD VERTICAL GRINDER, s/n 33557, Rebuilt in 2005 by MSC, 52" T Slotted Face Plate, 36" Under Rail, (2) 24" Grinding Wheels, 30" Rail Vertical Travel, 18" Head Horizontal Travel, 15" Head Vertical Travel, Fanuc 16i-T CNC

2013 RITEWAY CNC VERTICAL GRINDER, s/n 5020213, 30" Swing, 12" Grinding Wheel, Laser Size control, Riteway CNC Control

To discuss your requirements for an auction, please call Perfection Industrial +1-847.545.6374

View our current auction schedule at
www.perfectionindustrial.com

HORIZONTAL BANDSAW, PRESS BRAKE, MISCELLANEOUS MACHINE TOOLS, INDUCTION SCANNER SYSTEM, HEAT TREAT



MONARCH 10EE LATHE



CLAUSING CSG-2A618 SURFACE GRINDER



PIRANHA P90 IRONWORKER



BRIDGEPORT SERIES 1 EZ TRAK II VERTICAL MILL



WARD #6 TOOL AND CUTTER GRINDER



AMADA FAB 50D HYDRAULIC PRESS BRAKE

HORIZONTAL BANDSAW

2013 HYDMECH H-22A HORIZONTAL BANDSAW, s/n C0213401S, 22" x 22" Capacity, PLC Feed, 2" Blade, Coolant

PRESS BRAKE

1990 AMADA FAB 50D HYDRAULIC PRESS BRAKE, s/n 520041S, 50-Ton Capacity, 78" x 2.5" Bed, 67" Between Housings, 15.75" Throat, 3.9" Stroke, 14.5" Daylight Opening, 2-Axis Back Gauge, Express Die Clamp System, NC9-EXII Control, Including Pictured Dies, Not including Optional Added Laser

MISCELLANEOUS MACHINE TOOLS

MONARCH 10EE ENGINE LATHE, s/n 49928, 8" 4-Jaw Chuck, (1) 6" 3-Jaw Chuck, (1) Steady Rest, Collet Chuck w/Assorted Collets, DRO

MAKINO FNC-156 VERTICAL MACHINING CENTER, s/n LM-328, 24" x 75" Table, 30" Under Spindle, 12" 4th Axis, 40 ATC (Cat 50), Fanuc 0 CNC Control

2012 CLAUSING CSG-2A618 SURFACE GRINDER, s/n E1TAB0083, 6" x 18" Table, Wired Magnetic Chuck, Variable Speed, Downfeed, Coolant, Dust Collector



KEITH KIPR 1424142200 ELECTRIC FURNACE SYSTEM



TM VACUUM FURNACE SYSTEM



2 AVAILABLE
AJAX TOCCO 250 KW POWER SUPPLY



HIS HEATING INDUCTION SERVICES 100 KW INDUCTION SCANNER SYSTEM

1996 BRIDGEPORT SERIES 1 EZ TRAK II VERTICAL MILL, s/n 7424, Equipped w/4 HP, EZ Trak Control, Power Feeds

LAGUN FTV 4L VERTICAL MILL, s/n 21167-FTV4L, 58" x 11" Table, 40 Taper, Variable Speed, 4 HP

2000 KONDIA B1050 VMC, s/n B6374, 47" x 19" Table, 8" 4th Axis, 20 ATC (Cat 40), 8k RPM

PIRANHA P90 IRONWORKER, 90-Ton Capacity, Equipped w/Tooling as Pictured

2013 COETZ BALANCING MACHINE, s/n DSB001, 10" Max. Dia., 134" Max. Length

ALSO: WARD #6 TOOL AND CUTTER GRINDER, WARNER SWASEY #3 TURRET LATHE, SUMMIT 3BHD DRILL, BERCO RTGK CYLINDRICAL GRINDER AND TUBE LASERS

INDUCTION SCANNER SYSTEM

HIS HEATING INDUCTION SERVICES 100 KW INDUCTION SCANNING SYSTEM, s/n B6557, 8"-18" Rings, 20' Pipe Rack w/Trolley, Allen Bradley PLC, Retrofitted and Recontrolled in 2013 and Not Installed



TPS THERMAL PRODUCT SOLUTIONS TLL45H234.0 OVEN

HEAT TREAT

2008 TPS TLL45H234.0 INDUSTRIAL OVEN, s/n 0908000010, 450 Deg. F Max. Temp, Electric, 108 kW

2007 KEITH KIPR 1424142200 ELECTRIC BIT FURNACE SYSTEM, s/n 8487-0713, 18" x 18" x 26" Inside Box Dimensions, 2200 Deg. F Max. Temp, Cooling Stand w/Quench

TM VACUUM FURNACE SYSTEM, s/n 1212590313, 18" x 18" x 24" Deep Chamber, 2400 Deg. F Max. Temp, Planar Controls

(2) 2007 AND 2005 AJAX TOCCO 250 KW POWER SUPPLIES, s/n 46-1250-11-40-A and 45-1073-11, w/Pacer T Control, AB PV Plus 600 PLC

NOTE: Lot numbers in the catalog are organized by location. (Ex. Lots 1-37 Located in Carrollton, TX, Lots 51-187 Located at Conroe, TX, Etc.) Refer to the sale details page on our website for the complete rundown of lot numbers and locations. Additionally, each item in the lot catalog will have its location specified in the lot description.

FINISHING, WELDING, PLANT SUPPORT & MORE



2013
WHEELABRATOR PBA08-2
PORTABLE SHOTBLASTER SYSTEM



2010
FINNSONIC SC-100
ULTRASONIC CLEANER



2010
EISEN PA4506020 LATHE AND
SEAM WELDER



2015
PRESTON EASTIN PA 240 HD
WELDING-POSITIONER



2015
PRESTON EASTIN MA99HD
MANIPULATOR

FINISHING

2013 WHEELABRATOR PBA08-2 PORTABLE SHOTBLAST SYSTEM, s/n 001185-1-1-4, w/Reclaim, Portable Aluminum Shipping Container, Atlas Copco Dryer, New, Never Used

2013 WHEELABRATOR PBA08-2 PORTABLE SHOTBLAST SYSTEM, s/n 001185-6, w/Reclaim, Portable Aluminum Shipping Container



OVER (30) WELDING
POWER SOURCES

2010 FINNSONIC SC-100 ULTRASONIC CLEANER, s/n 19030010, 41" x 32" Opening, 37" x 37" Tray, 29" Max. Height Off Tray, Timer, Heater

2010 FINNSONIC V33 CR-RANGE ULTRASONIC CLEANER, s/n 501005600, (3) 25" x 28" x 28" Chambers

WELDING

2015 PRESTON EASTIN MA99HD MANIPULATOR, s/n MA99HD133, 9' x 9' Travel, Equipped w/Lincoln Idealarc DC600 Power Supply, Lincoln NA-3N Feed and Flux Box

2015 PRESTON EASTIN PA 240 HD WELDING-POSITIONER, s/n PA240HD113, 24,000 Lb Capacity, Tilt and Rotate

2010 EISEN PA4506020 ENGINE LATHE, s/n 10060788, w/Seam Welder, 48" x 72" Lathe, No Chuck, In/MM Threading, Custom Sub Arc System w/96" Travel, Miller Subarc, Miller Deltaweld 652 Power Supply, Flux Reclaim System, Flux Box

ALSO: (30+) MILLER AND LINCOLN WELDING POWER SOURCES, TORIT DOWNDRAFT TABLES, WELDING SCREENS



2014
CAMFIL
FARR GSX8
DUST
COLLECTOR



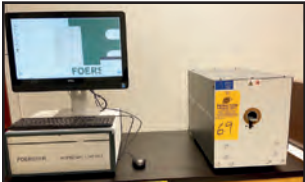
NEW, NEVER INSTALLED



CATERPILLAR C5000 FORKLIFT



2 AVAILABLE
CATERPILLAR P5000 FORKLIFT



FOERSTER KOERZIMAT 1.097 HCJ
MAGNETOMETER

LEICA EM
ACE 600
SPUTTER
COATER



BOGIMAC
IFGM
FRIATESTER



2015
EPIC 130 OPTICAL
COMPARATOR

PLANT SUPPORT

2014 CAMFIL GS16 DUST COLLECTOR, s/n C15143001, 16,000 CFM, Explosive Dust Classified, On Stands w/Farr Dust Collector Controller, s/n K74063001, New, Never Installed

TOYOTA 42-6FGCU25 FORKLIFT, s/n 72774, 5,100 Lb Capacity, LP, 2-Stage, Side Shift, Hard Tires, 48" Forks, Needs Battery

CATERPILLAR C5000 LP FORKLIFT, s/n AT9002646, 4,750 Lb Capacity, Side Shift, Semi Hard Tires, 3-Stage Mast, 44" Forks, 1500 Hours

TOYOTA 8FGU25 LP FORKLIFT, s/n 14039, 4,500 Lb Capacity, Semi Pneumatic Tires, 3-Stage Mast, Side Shift, 1400 Hours

(2) CATERPILLAR P5000 LP FORKLIFTS, s/n AT3520764 (2300 Hours) and AT3521020 (2500 Hours), 4,500 Lb Capacity, Side Shift, 3-Stage Mast, Semi Pneumatic Tires

CATERPILLAR GP25N FORKLIFT, s/n AT35A04891, 4,450 Lb Capacity, LP, 188" Lift, Side Shift, Fork-Positioning, Heater, Cab, Semi Hard Tires, 3300 Hours



2009

ALSO: 2015 FOERSTER KOERZIMAT 1.097 HCJ MAGNETOMETER, 2015 LEICA EM ACE 600 SPUTTER COATER, 2018 BOGIMAC IFGM FRIATESTER, MISC. Q/A, LAB AND TESTING EQUIPMENT, 2009 EPIC 130 OPTICAL COMPARATOR, SHEFFIELD CORDAX RS-50 CMM, COOLANT RECYCLING SYSTEM, DUST COLLECTORS, BLAST CABINETS, PARTS WASHERS, BATCH FURNACES, AIR DRYERS, GORBEL BRIDGE AND JIB CRANE SYSTEMS, PIPE RACKS, PALLET RACKING, BALL BEARING AND SHOP CABINETS, TOOL BOXES, ROLLING SHOP CARTS, FLAT SCREEN TV'S, SHOP AND OFFICE FURNITURE AND MORE

Sale Closing Date: Wednesday,
September 2 at 12:00 PM CT

Sale Locations: (7) Plant Locations –
See Website for Listing

Inspection: Tuesday, September 1,
by Appointment Only

TERMS OF SALE

An 18% buyer's premium will be charged on all assets. The buyer's premium will be reduced to 16% for payments made by means of cashier's check or wire transfer within 48 hours of sale close. If paying by company check, a paid in full invoice will be issued upon the check clearing. Credit card payments are limited to a maximum of \$2,000. All items are sold "As is, Where is" without any warranty, express or implied.

REMOVAL

Removal begins Tuesday, September 8 and runs through Friday, September 18. Rigging Note: All Buyers must use rigging companies specified by Halliburton. A list of approved riggers per facility can be found on the Perfection Industrial Sales website and will be included with all invoices.

View our current auction schedule at www.perfectionindustrial.com

Pre-Auction Offers
Invited on Major Assets

FOR FURTHER INFORMATION

For further information, please contact Jennifer Reiner at
+1-847-545-6374 or jennifer@perfectionindustrial.com

To discuss your requirements for an auction, please call Perfection Industrial +1-847.545.6374



Perfection Industrial Sales
ph +1-847-545-6374 • fax +1-847-427-8884
www.perfectionindustrial.com

Online Bidding at
www.perfectionindustrial.com