

Assets Surplus to

## **HALLIBURTON** FROM MULTIPLE PLANTS IN TEXAS, OKLAHOMA & LOUISIANA



HYDMECH H-22A HORIZONTAL BANDSAW

**FEATURING:** Turning Centers,  
Breakout Machine, Grinders,  
Horizontal Bandsaw,  
Press Brake,  
Miscellaneous Machine Tools,  
Induction Scanner System,  
Heat Treat, Finishing, Welding,  
Plant Support & More

*Pre-Auction Offers  
Invited on Major Assets*



MORI SEIKI MT3500S/3500 CNC TURNING CENTER



MORI SEIKI NT4300 DCG CNC TURNING CENTER

**Sale Closing Date:** Wednesday, September 2 at 12:00 PM CT

**Sale Locations:** (7) Plant Locations – See Website for Listing

**Inspection:** Tuesday, September 1, by Appointment Only



# TURNING CENTERS, BREAKOUT MACHINE, GRINDERS

## TURNING CENTERS

**(2) 2006 MORI SEIKI NT4300 DCG CNC LATHES**, s/n NT430FH0010 and NT430FH0013, (2) 12" 3-Jaw Chucks, 60" Centers, MSX-711 III CNC Control, Omni Rest

**(2) 2006 MORI SEIKI MT3500S/3500 CNC LATHES**, s/n MT351FA0005 and MT351FA0006, (2) 12" 3-Jaw Chucks, 125" Center to Center, 120 ATC, Capto/HSK Taper, MSX-501 CNC Control, Chiller, Omni Rests

**2006 WEILER E50 X 2000 CNC LATHE**, s/n BF04, 15" 4-Jaw Chuck, 85" Centers, Siemens CNC Control, Chip Conveyor, Coolant System, Aloris Toolpost, Steady Rest is NOT Included

**2001 GURUTZPE B1400/3 5000 CNC LATHE**, s/n 1.54-8011, 50" x 220" Capacity, 38" Over X Slide, 30" 3-Jaw Chuck, 12-Position Turret, 20" Omni Rest, Fanuc 16i-T CNC Control, 5" Boring Bar Holder w/Slide

**2000 MAZAK ST50N CNC LATHE**, s/n 153928, 22" 3-Jaw Chuck, 9" Hole, 50" Max. Chuck to Turret, Tooleye, Fusion CNC Control, Chip Conveyor/Coolant System, Missing Power Supply

**2005 MORI SEIKI MT2500S/1500 CNC LATHE**, s/n MT251EL0126, (2) 10" 3-Jaw Chucks, 60" Centers, Omni Rest, MSX-501 CNC Control, Chip/Coolant System, Cooljet Coolant System, 110 ATC



**2 AVAILABLE**  
MORI SEIKI NT4300 DCG CNC TURNING CENTER



**2 AVAILABLE**  
MORI SEIKI MT3500S/3500 CNC TURNING CENTER

**1997 MORI SEIKI ZL-45 CNC LATHE**, s/n 167, 19" 3-Jaw Chuck, 60" Center Distance, MSD-516 CNC Control, (2) Turret w/12-Position and 10-Position, 50 HP, 3.6" Hole

**1998 MAZAK INTEGREX 30 CNC LATHE**, s/n 137931, 12" 3-Jaw Chuck, 48" Center Distance, Mazatrol T Plus CNC Control, 40 ATC (Cat 40), Tool Eye, Missing a Power Supply

**1991 MORI SEIKI SL65A CNC LATHE**, s/n 979, 16" 3-Jaw Front Power Chuck, 15" 6-Jaw Rear Manual Chuck, 40" Centers, Moric-T4f (Fanuc) CNC, 12-Position Turret, Chip Conveyor/Coolant System

**CINCINNATI 15U CNC LATHE**, s/n 5305U1580023, 15" 3-Jaw Chuck, 108" Centers, Crown and Upper Turrets, Fanuc 15 CNC Control, Daniluk Rebuild, (6) Steady Rests

**All buyers must use rigging companies specified by Halliburton. A list of approved riggers per facility can be found on the Perfection Industrial Sales website and will be included w/all invoices.**



**2006**  
WEILER E50 X 2000 CNC LATHE



**2001**  
GURUTZPE B1400/3 5000 CNC LATHE



**2000**  
MAZAK ST50N CNC LATHE



**2010**  
NOV TORQUEMASTER BREAKOUT MACHINE



**52" BULLARD VERTICAL GRINDER**



**2013**  
RITEWAY CNC VERTICAL GRINDER



**2013**  
REMCO GY200 RUBBER ROLL GRINDER/LATHE



**2010**  
SUPERTEC STC2008NC CENTERLESS GRINDER

## BREAKOUT MACHINE

**2010 NOV TORQUEMASTER BREAKOUT MACHINE**, s/n 10083-FLJ/1689-607, 12" Capacity, Hydraulic Push/Pull Cylinder, Control Cabinet, Support Jacks

## GRINDERS

**2013 REMCO GY 200 RUBBER ROLL GRINDER/LATHE**, s/n GY216x60-1960-480-A13, 16" x 60" Center Capacity, 12" 3-Jaw Chuck, 10 HP Grinding Wheel, 2" Through Spindle Hole

**2010 SUPERTEC STC2008NC CENTERLESS GRINDER**, s/n CB10008, New, Never Installed, 8" Wheel Width, 20 HP

**52" BULLARD VERTICAL GRINDER**, s/n 33557, Rebuilt in 2005 by MSC, 52" T Slotted Face Plate, 36" Under Rail, (2) 24" Grinding Wheels, 30" Rail Vertical Travel, 18" Head Horizontal Travel, 15" Head Vertical Travel, Fanuc 16i-T CNC

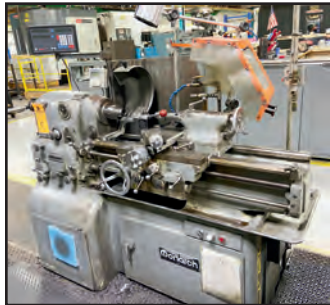
**2013 RITEWAY CNC VERTICAL GRINDER**, s/n 5020213, 30" Swing, 12" Grinding Wheel, Laser Size control, Riteway CNC Control

**To discuss your requirements for an auction, please call Perfection Industrial +1-847.545.6374**

**View our current auction schedule at**  
[www.perfectionindustrial.com](http://www.perfectionindustrial.com)



# HORIZONTAL BANDSAW, PRESS BRAKE, MISCELLANEOUS MACHINE TOOLS, INDUCTION SCANNER SYSTEM, HEAT TREAT



MONARCH 10EE LATHE



CLAUSING CSG-2A618 SURFACE GRINDER



PIRANHA P90 IRONWORKER



BRIDGEPORT SERIES 1 EZ TRAK II VERTICAL MILL



WARD #6 TOOL AND CUTTER GRINDER



AMADA FAB 50D HYDRAULIC PRESS BRAKE

## HORIZONTAL BANDSAW

2013 HYDMECH H-22A HORIZONTAL BANDSAW, s/n C0213401S, 22" x 22" Capacity, PLC Feed, 2" Blade, Coolant

## PRESS BRAKE

1990 AMADA FAB 50D HYDRAULIC PRESS BRAKE, s/n 520041S, 50-Ton Capacity, 78" x 2.5" Bed, 67" Between Housings, 15.75" Throat, 3.9" Stroke, 14.5" Daylight Opening, 2-Axis Back Gauge, Express Die Clamp System, NC9-EXII Control, Including Pictured Dies, Not including Optional Added Laser

## MISCELLANEOUS MACHINE TOOLS

MONARCH 10EE ENGINE LATHE, s/n 49928, 8" 4-Jaw Chuck, (1) 6" 3-Jaw Chuck, (1) Steady Rest, Collet Chuck w/Assorted Collets, DRO

MAKINO FNC-156 VERTICAL MACHINING CENTER, s/n LM-328, 24" x 75" Table, 30" Under Spindle, 12" 4th Axis, 40 ATC (Cat 50), Fanuc 0 CNC Control

2012 CLAUSING CSG-2A618 SURFACE GRINDER, s/n E1TAB0083, 6" x 18" Table, Wired Magnetic Chuck, Variable Speed, Downfeed, Coolant, Dust Collector



KEITH KIPR 1424142200 ELECTRIC FURNACE SYSTEM



TM VACUUM FURNACE SYSTEM



2 AVAILABLE  
AJAX TOCCO 250 KW POWER SUPPLY



HIS HEATING INDUCTION SERVICES 100 KW INDUCTION SCANNER SYSTEM

1996 BRIDGEPORT SERIES 1 EZ TRAK II VERTICAL MILL, s/n 7424, Equipped w/4 HP, EZ Trak Control, Power Feeds

LAGUN FTV 4L VERTICAL MILL, s/n 21167-FTV4L, 58" x 11" Table, 40 Taper, Variable Speed, 4 HP

2000 KONDIA B1050 VMC, s/n B6374, 47" x 19" Table, 8" 4th Axis, 20 ATC (Cat 40), 8k RPM

PIRANHA P90 IRONWORKER, 90-Ton Capacity, Equipped w/Tooling as Pictured

2013 COETZ BALANCING MACHINE, s/n DSB001, 10" Max. Dia., 134" Max. Length

ALSO: WARD #6 TOOL AND CUTTER GRINDER, WARNER SWASEY #3 TURRET LATHE, SUMMIT 3BHD DRILL, BERCO RTGK CYLINDRICAL GRINDER AND TUBE LASERS

## INDUCTION SCANNER SYSTEM

HIS HEATING INDUCTION SERVICES 100 KW INDUCTION SCANNING SYSTEM, s/n B6557, 8"-18" Rings, 20' Pipe Rack w/Trolley, Allen Bradley PLC, Retrofitted and Recontrolled in 2013 and Not Installed



TPS THERMAL PRODUCT SOLUTIONS TLL45H234.0 OVEN

## HEAT TREAT

2008 TPS TLL45H234.0 INDUSTRIAL OVEN, s/n 0908000010, 450 Deg. F Max. Temp, Electric, 108 kW

2007 KEITH KIPR 1424142200 ELECTRIC BIT FURNACE SYSTEM, s/n 8487-0713, 18" x 18" x 26" Inside Box Dimensions, 2200 Deg. F Max. Temp, Cooling Stand w/Quench

TM VACUUM FURNACE SYSTEM, s/n 1212590313, 18" x 18" x 24" Deep Chamber, 2400 Deg. F Max. Temp, Planar Controls

(2) 2007 AND 2005 AJAX TOCCO 250 KW POWER SUPPLIES, s/n 46-1250-11-40-A and 45-1073-11, w/Pacer T Control, AB PV Plus 600 PLC

NOTE: Lot numbers in the catalog are organized by location. (Ex. Lots 1-37 Located in Carrollton, TX, Lots 51-187 Located at Conroe, TX, Etc.) Refer to the sale details page on our website for the complete rundown of lot numbers and locations. Additionally, each item in the lot catalog will have its location specified in the lot description.



# FINISHING, WELDING, PLANT SUPPORT & MORE



2013  
WHEELABRATOR PBA08-2  
PORTABLE SHOTBLASTER SYSTEM



2010  
FINNSONIC SC-100  
ULTRASONIC CLEANER



2010  
EISEN PA4506020 LATHE AND  
SEAM WELDER



2015  
PRESTON EASTIN PA 240 HD  
WELDING-POSITIONER



2015  
PRESTON EASTIN MA99HD  
MANIPULATOR

## FINISHING

2013 WHEELABRATOR PBA08-2 PORTABLE SHOTBLAST SYSTEM, s/n 001185-1-1-4, w/Reclaim, Portable Aluminum Shipping Container, Atlas Copco Dryer, New, Never Used

2013 WHEELABRATOR PBA08-2 PORTABLE SHOTBLAST SYSTEM, s/n 001185-6, w/Reclaim, Portable Aluminum Shipping Container



OVER (30) WELDING  
POWER SOURCES

2010 FINNSONIC SC-100 ULTRASONIC CLEANER, s/n 19030010, 41" x 32" Opening, 37" x 37" Tray, 29" Max. Height Off Tray, Timer, Heater

2010 FINNSONIC V33 CR-RANGE ULTRASONIC CLEANER, s/n 501005600, (3) 25" x 28" x 28" Chambers

## WELDING

2015 PRESTON EASTIN MA99HD MANIPULATOR, s/n MA99HD133, 9' x 9' Travel, Equipped w/Lincoln Idealarc DC600 Power Supply, Lincoln NA-3N Feed and Flux Box

2015 PRESTON EASTIN PA 240 HD WELDING-POSITIONER, s/n PA240HD113, 24,000 Lb Capacity, Tilt and Rotate

2010 EISEN PA4506020 ENGINE LATHE, s/n 10060788, w/Seam Welder, 48" x 72" Lathe, No Chuck, In/MM Threading, Custom Sub Arc System w/96" Travel, Miller Subarc, Miller Deltaweld 652 Power Supply, Flux Reclaim System, Flux Box

ALSO: (30+) MILLER AND LINCOLN WELDING POWER SOURCES, TORIT DOWNDRAFT TABLES, WELDING SCREENS



2014  
CAMFIL  
FARR GSX8  
DUST  
COLLECTOR



NEW, NEVER INSTALLED



CATERPILLAR C5000 FORKLIFT



CATERPILLAR P5000 FORKLIFT

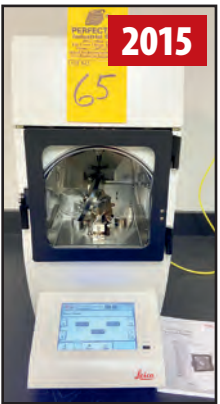


FOERSTER KOERZIMAT 1.097 HCJ  
MAGNETOMETER

LEICA EM  
ACE 600  
SPUTTER  
COATER



BOGIMAC  
IFGM  
FRIATESTER



2015  
EPIC 130 OPTICAL  
COMPARATOR

## PLANT SUPPORT

2014 CAMFIL GS16 DUST COLLECTOR, s/n C15143001, 16,000 CFM, Explosive Dust Classified, On Stands w/Farr Dust Collector Controller, s/n K74063001, New, Never Installed

TOYOTA 42-6FGCU25 FORKLIFT, s/n 72774, 5,100 Lb Capacity, LP, 2-Stage, Side Shift, Hard Tires, 48" Forks, Needs Battery

CATERPILLAR C5000 LP FORKLIFT, s/n AT9002646, 4,750 Lb Capacity, Side Shift, Semi Hard Tires, 3-Stage Mast, 44" Forks, 1500 Hours

TOYOTA 8FGU25 LP FORKLIFT, s/n 14039, 4,500 Lb Capacity, Semi Pneumatic Tires, 3-Stage Mast, Side Shift, 1400 Hours

(2) CATERPILLAR P5000 LP FORKLIFTS, s/n AT3520764 (2300 Hours) and AT3521020 (2500 Hours), 4,500 Lb Capacity, Side Shift, 3-Stage Mast, Semi Pneumatic Tires

CATERPILLAR GP25N FORKLIFT, s/n AT35A04891, 4,450 Lb Capacity, LP, 188" Lift, Side Shift, Fork-Positioning, Heater, Cab, Semi Hard Tires, 3300 Hours



2009

ALSO: 2015 FOERSTER KOERZIMAT 1.097 HCJ MAGNETOMETER, 2015 LEICA EM ACE 600 SPUTTER COATER, 2018 BOGIMAC IFGM FRIATESTER, MISC. Q/A, LAB AND TESTING EQUIPMENT, 2009 EPIC 130 OPTICAL COMPARATOR, SHEFFIELD CORDAX RS-50 CMM, COOLANT RECYCLING SYSTEM, DUST COLLECTORS, BLAST CABINETS, PARTS WASHERS, BATCH FURNACES, AIR DRYERS, GORBEL BRIDGE AND JIB CRANE SYSTEMS, PIPE RACKS, PALLET RACKING, BALL BEARING AND SHOP CABINETS, TOOL BOXES, ROLLING SHOP CARTS, FLAT SCREEN TV'S, SHOP AND OFFICE FURNITURE AND MORE

**Sale Closing Date:** Wednesday,  
September 2 at 12:00 PM CT

**Sale Locations:** (7) Plant Locations –  
See Website for Listing

**Inspection:** Tuesday, September 1,  
by Appointment Only

### TERMS OF SALE

An 18% buyer's premium will be charged on all assets. The buyer's premium will be reduced to 16% for payments made by means of cashier's check or wire transfer within 48 hours of sale close. If paying by company check, a paid in full invoice will be issued upon the check clearing. Credit card payments are limited to a maximum of \$2,000. All items are sold "As is, Where is" without any warranty, express or implied.

### REMOVAL

Removal begins Tuesday, September 8 and runs through Friday, September 18. Rigging Note: All Buyers must use rigging companies specified by Halliburton. A list of approved riggers per facility can be found on the Perfection Industrial Sales website and will be included with all invoices.

View our current auction schedule at [www.perfectionindustrial.com](http://www.perfectionindustrial.com)

Pre-Auction Offers  
Invited on Major Assets

### FOR FURTHER INFORMATION

For further information, please contact Jennifer Reiner at  
+1-847-545-6374 or [jennifer@perfectionindustrial.com](mailto:jennifer@perfectionindustrial.com)

To discuss your requirements for an auction, please call Perfection Industrial +1-847.545.6374



Perfection Industrial Sales  
ph +1-847-545-6374 • fax +1-847-427-8884  
[www.perfectionindustrial.com](http://www.perfectionindustrial.com)

Online Bidding at  
[www.perfectionindustrial.com](http://www.perfectionindustrial.com)