



2012

HAAS VF-6/40 CNC VERTICAL MACHINING CENTER



**COMPLETE
CUTTING TOOL
MFG. & REPAIR
FACILITY**

**Over 700 Lots of
Precision Milling,
Turning,
Inspection
& Factory
Support
Equipment**



2005

DAEWOO PUMA 240L CNC TURNING CENTER



OVER \$300,000 IN PERISHABLE TOOLING

HUGE SELECTION OF PERISHABLE TOOLING

Sale Closing From: Tuesday, June 27, 2017 at 11:00 AM CDT

Sale Location: 6204 Factory Road, Crystal Lake, Illinois 60014

Inspection: Monday, June 26, 2017 from 8:00 AM–4:00 PM CDT, or by Special Appointment

CNC VERTICAL MACHINING CENTERS, CNC TURNING CENTERS & CNC LATHES



2012
HAAS VF-6/40 CNC VERTICAL MACHINING CENTER



2000
HAAS VF-6 CNC VERTICAL MACHINING CENTER



1999
HAAS VF-2 CNC VERTICAL MACHINING CENTER



2000
HAAS VF-0 CNC VERTICAL MACHINING CENTER



OKUMA & HOWA HL-35 CNC LATHE



2012
HAAS TR210 TILTING 2-AXIS TRUNNION ROTARY TABLES



2011
HAAS TR210 TILTING 2-AXIS TRUNNION ROTARY TABLE



2011
HAAS 4TH AXIS ROTARY TABLE

CNC VERTICAL MACHINING CENTERS

2012 HAAS VF-6/40 CNC VERTICAL MACHINING CENTER, s/n 1091573, Haas CNC Control, 64" X-Axis, 32" Y-Axis, 30" Z-Axis, 4"-34" Spindle Nose to Table, 64" x 28" Table, 4,000-Lb Table Capacity, 30 HP, 8,100 RPM, Cat 40 Spindle Taper, 24 ATC, Wired for 5-Axis

2000 HAAS VF-6 CNC VERTICAL MACHINING CENTER, s/n 22604, Haas CNC Control, 64" X-Axis, 32" Y-Axis, 30" Z-Axis, 4"-34" Spindle Nose to Table, 64" x 28" Table, 4,000-Lb Table Capacity, 30 HP, 8,100 RPM, Cat 40 Spindle Taper, 24 ATC, Wired for 5-Axis

1999 HAAS VF-2 CNC VERTICAL MACHINING CENTER, s/n 18253, Haas CNC Control, 30" X-Axis, 16" Y-Axis, 20" Z-Axis, 4"-24" Spindle Nose to Table, 26" x 14" Table, 3,000-Lb Table Capacity, 30 HP, 8,100 RPM, Cat 40 Spindle Taper, 20 ATC



2005
DAEWOO PUMA 240L CNC TURNING CENTER

(2) 1997 AND 1996 HAAS VF-0 CNC VERTICAL MACHINING CENTERS, s/n 12737 and 7774 Haas CNC Control, 20" X-Axis, 16" Y-Axis, 20" Z-Axis, 26" x 14" Table, 4"-24" Spindle Nose to Table, 3,000-Lb Table Capacity, Cat 40 Taper, 0-7,500 RPM Spindle Speed, 20 ATC

ALSO AVAILABLE: (2) 2012 AND 2011 HAAS TR210 TILTING 2-AXIS TRUNNION ROTARY TABLES, s/n's 904454 and 904139; **(2) HAAS 4TH AXIS ROTARY TABLES**, s/n's 213926 and 216590; **(OVER 250) CAT 40 AND CAT 50 TOOL HOLDERS; KURT ANG-LOCK MACHINE VISES; KURT HDL4 CARV-LOCK WORK HOLDING VISES; HUGE QUANTITY OF PERISHABLE TOOLING AND MORE**

CNC TURNING CENTERS & CNC LATHES

2005 DAEWOO PUMA 240L CNC TURNING CENTER, s/n CT3000966, Fanuc 21i-TB CNC Control, 24" Z-Axis, 14" X-Axis, 22.4" Swing Over Bed, 23.6" Distance Between Centers, 16.49" Max. Turning Dia., 945 IPM Rapids, 6,000 RPM Spindle Speed, 12-Position Turret, Samchully Powergrip HS-10 Chuck

OKUMA & HOWA HL-35 CNC LATHE, s/n 00273, Fanuc Series 18-T CNC Control, 6.10" X-Axis, 24.02" Z-Axis, 19.69" Swing, 24" Max. Length, 13.78" Max. Machining Dia., Kitagawa B-212 12 Chuck, 12-Position Turret, 35-3,500 RPM Spindle Speeds

TOOL ROOM MACHINERY



DOALL C-330NC AUTOMATIC HORIZONTAL BANDSAW



3 AVAILABLE

LAGUN FTV-2 VERTICAL MILL



3 AVAILABLE

WILTON VERTICAL MILL



JET JTM-1050 VERTICAL MILL



JET JTM-4VS VERTICAL MILL



3 AVAILABLE

BRIDGEPORT VERTICAL MILL



2 AVAILABLE

SHARP VERTICAL MILL



WEBB CHAMP 3VH VERTICAL MILL



2008

WEBB CHAMP 3VK VERTICAL MILL

TOOL ROOM MACHINERY

DOALL C-330NC AUTOMATIC HORIZONTAL BANDSAW, s/n 552-05135R, 13" x 13" Capacity, 1" Blade Thickness, 166" Blade Length

(3) LAGUN FTV-2 VERTICAL MILLS, s/n's 47166, 41301, and 38828, 10" x 50" Table, 250-4,200 RPM, Acu-Rite DRO, Risers

(3) WILTON VERTICAL MILLS, s/n's 4120051, 4120046 and 4070034, 9" x 49" Table, 60-4,200 RPM, 3 HP, Acu-Rite Micro-Line DRO, Kurt Powerlock Automatic Power Draw Bar, Risers

JET JTM-1050 VERTICAL MILL, s/n 7090298, 10" x 50" Table, 80-3,800 RPM, 2 HP, Acu-Rite DRO, Drawbar, (2) 8" Risers

JET JTM-4VS VERTICAL MILL, s/n 7040025, 9" x 49" Table, 60-4,200 RPM, 3 HP, Anilam Wizard 550 DRO, Drawbar, Risers

(2) BRIDGEPORT VERTICAL MILLS, s/n's 276631 and 268967, 9" x 48" Table, 60-4,200 RPM, 2 HP, Newall Topaz DRO, Kurt Powerlock Automatic Power Draw Bar, Risers

BRIDGEPORT SERIES I VERTICAL MILL, s/n 17718, 9" x 32" Table, 60-4,200 RPM, 2 HP

(2) SHARP VERTICAL MILLS, s/n's 60223453 and 70825093, 9" x 50" Table, 60-4,500 RPM, 2 HP, Sony Millman DRO, Draw Bar, Risers

2008 WEBB CHAMP 3VK VERTICAL MILL, s/n 9711525, 10" x 50" Table, 60-4,200 RPM, 3 HP, Risers

WEBB CHAMP 3VH VERTICAL MILL, s/n 76930, 10" x 50" Table, 60-4,200 RPM, 3 HP Trak DRO, Riser

(10) YUASA ACCU-DEX INDEXES W/8" CHUCKS

(10) TROYKE AND KEARNEY AND TRECKER ROTARY TABLES UP TO 20" DIA.

(17) YUASA 3-WAY ANGLE MILLING VISES ON SWIVEL BASES

JET JPSG-618M SURFACE GRINDER, s/n 210086

MITSUI MSG200MH SURFACE GRINDER, s/n 79032159

MYFORD 5" X 12" OD GRINDER, s/n 79032159

A-FRAME SHOP PRESS W/30-TON CENTRAL HYDRAULICS BOTTLE JACK

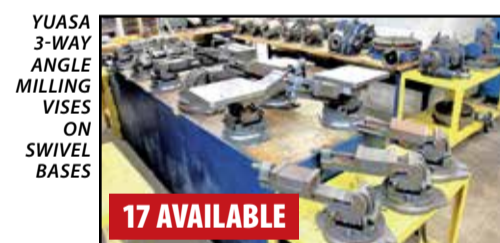
PROPEN P300 PNEUMATIC MARKING MACHINE, s/n 06-11-7760

2012 EZ SET EZGO4C1-00154 TOOL PRESETTER, s/n 61010-1

GILDEMEISTER DEVLIEG EGW3060-002 MICROBORE TOOL PRESETTER, s/n 67-10-314, Heidenhain DRO



YUASA ACCU-DEX INDEXES W/8" CHUCKS



YUASA 3-WAY ANGLE MILLING VISES ON SWIVEL BASES

17 AVAILABLE

ALSO AVAILABLE: (2) BALDOR 2" BELT SANDERS; (2) 12" DISC SANDERS, 3/4 HP; DIAMOND GROUND PRODUCTS 6" DIAMOND GRINDER; BOYER SHULTZ 618 SURFACE GRINDER; EVERETT 10 ABRASIVE SAW, 06-1685, 3,450 RPM, 3 HP; DAREX DRILL SHARPENER; MILWAUKEE 8" BENCH GRINDER; ENCO DRILL PRESS; HAND TOOLS; POWER TOOLS; FIBERGLASS EXTENSION LADDERS; WORK BENCHES; TOOL BOXES; LISTA AND VIDMAR TOOL CABINETS; SHOP CABINET AND MORE



ULTRA-DEX FBS FIBER LASER MARKING SYSTEM



MYFORD 5" X 12" OD GRINDER



MITSUI MSG200MH SURFACE GRINDER



EZ SET EZGO4C1-00154 TOOL PRESETTER

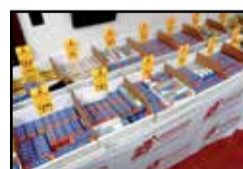


OVER 250

VIEW OF CAT 40 AND CAT 50 TOOL HOLDERS



HUGE SELECTION OF PERISHABLE TOOLING



19 AVAILABLE

KURT VISES



LARGE SELECTION OF HAND TOOLS AND POWER TOOLS



(OVER 30) WORK BENCHES



SELECTION OF ROTARY TABLES

To discuss your requirements for an auction, please call Perfection Industrial +1-847-545-6374

WELDING, INSPECTION, AIR COMPRESSORS, FINISHING & HEAT TREAT, FORKLIFT & LIFTING



VIEW OF MILLER TIG WELDERS

WELDING

MILLER SYNCROWAVE 250 DX TIG WELDER, s/n LG470035L

(4) MILLER SYNCROWAVE 250 TIG WELDERS, s/n's KD489352, KH460527, KF795059, and KD347948

MILLER MAXSTAR 300DX TIG WELDER, s/n LB196133

MILLER MAXSTAR 200 TIG WELDER, s/n LJ370230L

MILLER RADIATOR 1A COOLING SYSTEM, s/n KF324747

(2) MILLER COOLMATE 3 COOLING SYSTEMS, s/n's KH324747 and LB248113

CM INDUSTRIES 680-92-100 COOLING SYSTEM, s/n 90-15016, 115V

ALSO AVAILABLE: ANNEALING STATION, WIRE REELS, WELDING TABLES, WELDING HELMETS, AND MISC. WELDING SUPPLIES

INSPECTION

2011 ROMER MULTI GAGE 6-AXIS PORTABLE PRECISION CMM, s/n 5GMG444M

JONES & LAMSON EPIC 230 OPTICAL COMPARATOR, s/n E-72005, 110V

STARRETT HE400 OPTICAL COMPARATOR, s/n 20429, w/Quadra-Chek 2000 Readout

STARRETT SIGMA HB400 OPTICAL COMPARATOR, s/n 50067, 110V

MITUTOYO PH-350 PROFILE PROJECTOR, s/n 137

(2) TESA TESA-HITE 700 ELECTRONIC HEIGHT GAGES, s/n's 3G09402 and 2X63101

TESA TESA-HITE 400 ELECTRONIC HEIGHT GAGE, s/n 5X0027

ALSO AVAILABLE: (20) MITUTOYO AND FOWLER HEIGHT GAGES; (OVER 15) GRANITE SURFACE PLATES up to 24" x 36" x 4.5" Thick; ROTARY INSPECTION TABLES; ROCKWELL HARDNESS TESTER; CALIPERS, GAGE BLOCKS AND MORE



JONES & LAMSON EPIC 230 OPTICAL COMPARATOR



TESA HITE ELECTRONIC HEIGHT GAGES AND MITUTOYO HEIGHT GAGES



GARDNER DENVER COMPU-AIR L 22 RS-09A AIR COMPRESSOR



DUAL PISTON AIR COMPRESSOR 25 HP W/200-GALLON AIR TANK



INGERSOLL RAND 2545 DUAL-PISTON AIR COMPRESSOR



(2) STARRETT OPTICAL COMPARATORS

AIR COMPRESSORS

30 HP GARDNER DENVER COMPU-AIR L 22 RS-09A AIR COMPRESSOR, s/n 0D10012184001

25 HP DUAL PISTON AIR COMPRESSOR W/25 HP WESTINGHOUSE MOTOR, Mounted on 200-Gallon Manchester Air Tank

10 HP INGERSOLL RAND 2545 DUAL-PISTON AIR COMPRESSOR, s/n 5096088, Mounted on 120-Gallon Air Tank

PNEUMATECH NON-CYCLING REFRIGERATED AIR DRYER, s/n unknown, 250 SCFM Air Capacity, 150 PSIG Max. Air Pressure, 100 Degrees F Max. Inlet Air Temp, R-22 Refrigerant

CHAMPION CRG351 REFRIGERATED AIR DRYER, s/n 100002975377, 15 PSIG, R-407c Refrigerant

FINISHING & HEAT TREAT

ZERO BLAST-N-PEEN BLAST CABINET W/ COLLECTION UNIT, 1/2 HP

UNI-HONE 3600C0895652 BLAST CABINET, Version 50B

LINDBERG TREET-ALL BOX FURNACE, 12" x 12" x 24"D Chamber Area

FORKLIFT & LIFTING

4,500-LB CLARK C500 Y45 LP FORKLIFT, s/n Y355 273 3966, 2-Stage Mast, 106" Lift Height

BIG JOE 1454 FOOT-OPERATED WALK-BEHIND PLATFORM LIFT, s/n 29174

BLUE GIANT M10-52 WALKIE STACKER, s/n 802161, 1,000-Lb Capacity

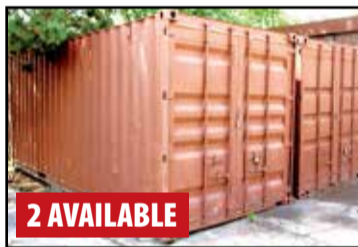
ALSO AVAILABLE: 8,000-LB JET PALLET JACK, (OVER 10) CHICAGO PNEUMATIC, CM LODESTAR AND HAULMASTER ELECTRIC HOISTS, CHAIN HOISTS, JOHNSON BAR, DIE-LIFT CARTS, SHOP RACKING AND CABINETS, LANDSCAPING TOOLS, COMPLETE OFFICE AREA INCLUDING ALL FURNITURE, COMPUTERS, PRINTERS, PHONE SYSTEM, AND MUCH MORE



ZERO AND UNI-HONE BLAST CABINETS



4,500-LB CLARK C500 Y45 LP FORKLIFT



20' SEA CONTAINER



ENTIRE OFFICE AREA

OFFICE FURNITURE, DESKTOP AND LAPTOP COMPUTERS, PRINTERS



To discuss your requirements for an auction, please call Perfection Industrial +1-847-545-6374

REMOVAL

All items must be removed no later than Friday, June 23, 2017. Removal times are Monday through Friday from 8 AM to 4 PM EDT, or by special appointment. All items are sold "As Is, Where Is". Buyers are responsible for all prepping, loading and trucking costs.

TERMS OF SALE

An 18% buyer's premium will be charged on all assets. The buyer's premium will be reduced to 15% for payments made by means of cash, cashier's check, company check (with bank letter of guarantee) or wire transfer within 48 hours of sale close. Credit card payments are limited to a maximum of \$2,000. All items are sold "As is, Where is" without any warranty, express or implied.

FOR FURTHER INFORMATION

For further information, contact Jennifer Reiner at +1-847-545-6374 or jennifer@perfectionindustrial.com

EXCLUSIVE SITE RIGGER

Rite Industrial Movers, Contact: Chad Boelk, Phone: +1-608-215-9941, chad@riteindustrialmovers.com

Sale Closing From: Tuesday, June 27, 2017 at 11:00 AM CDT

Sale Location: 6204 Factory Road, Crystal Lake, Illinois 60014

Inspection: Monday, June 26, 2017 from 8:00 AM-4:00 PM CDT, or by Special Appointment



PERFECTION Industrial Sales

Illinois License #444.000438 & #441.001779

Perfection Industrial Sales

ph +1-847-545-6374 • fax +1-847-427-8884

www.perfectionindustrial.com

Online Bidding at

www.perfectionindustrial.com