

LIVE AUCTION VIA **WEBCAST**



SURPLUS TO THE ONGOING OPERATIONS OF

Electrolux
P R O F E S S I O N A L
LOUISVILLE, KY



AIDA NC1-450 (2)E SINGLE POINT GAP FRAME PRESS

FEATURING: 2019 Aida NC1-450 Gap Frame Press (Low Hours), Amada & Accurpress CNC Press Brakes. Amada Pega 345 CNC Turret Punches, Amada TOGU III Tool Grinder, 2017 Tennsmith LM1010 Shear, 2010 Pemsrter Series 4 Insertion Press, Additional Fabricating Equipment, Tool Room Machinery, Jetline & Taylor Winfield Seam Welders as new as 2017, Spot & MIG Welders, Positioners, Welding Accessories & Consumables & Large Quantity of Plant Support

SALE DATE

Thursday, April 7, at 10:00 AM ET

SALE LOCATION

4003 Collins Lane, Louisville, KY 40245

INSPECTION

Wednesday, April 6, by appointment only

COMPLETE CATALOG & INFORMATION:

<https://perfection.global/electrolux>

**PRE-AUCTION
OFFERS INVITED
ON MAJOR ASSETS**



PANDJIRIS/JETLINE SEAMER CWF-50A SEAM WELDER



AMADA RG-80 CNC PRESS BRAKES



Perfection Industrial Sales

ph +1-847-545-6374 • fax +1-847-427-8884

www.perfectionindustrial.com

Joe Lundvick, KY Auctioneer License # 259458

Bidding Available Through

BidSpotter

GAP FRAME PRESS, CNC TURRET PUNCHES, TOOL GRINDER



AIDA NC1-450 (2)E SINGLE POINT GAP FRAME PRESS



TURRET PUNCH TOOLING



AMADA PEGA 304050 CNC TURRET PUNCH PRESS

GAP FRAME PRESS

2019 AIDA NC1-450 (2)E SINGLE POINT GAP FRAME PRESS, s/n 10404-0820, 49 Ton, 39 Ton Blanking Capacity, 4.72" Slide Stroke, 50-105 SPM, 10.62" Die Height, 2.36" Slide Adj, 16.1" x 13.3" Slide Area, 31.8" x 17.3" Bolster Area, 7.5 HP

CNC TURRET PUNCHES

AMADA PEGA 304050 CNC TURRET PUNCH PRESS, s/n AQ450204, 33 Ton, 58-Station, (2) Auto-Index, 50" X, 50" Y, 40" Throat, 40" x 80" Sheet Size, Amadan 04P-C Control

AMADA PEGA 304050 CNC TURRET PUNCH PRESS, s/n AQ450160, 33 Ton, 58-Station, (2) Auto-Index, 50" X, 50" Y, 40" Throat, 40" x 80" Sheet Size, Amadan 04P-C Control

LARGE SELECTION OF TURRET PUNCH TOOLING



AMADA PEGA 304050 CNC TURRET PUNCH PRESS

TOOL GRINDER

AMADA TOGU III AUTOMATIC TOOL GRINDER, s/n 30230185



AMADA TOGU III AUTOMATIC TOOL GRINDER

**PRE-AUCTION
OFFERS
INVITED
ON
MAJOR
ASSETS**

Bidding Available Through
BidSpotter

PRESS BRAKES, SHEARS

PRESS BRAKES

(3) AMADA RG-80 CNC PRESS BRAKES, s/n 811823, 810534, 810267, 88 Ton Capacity, 94.6" Table Length, 98.7" Max Bending Length, 80.8" Distance Between Uprights, 15.76" Throat Depth, 3.94" Stroke, 14.58" Open Height, 3-Axis Back Gauge, NC9-EXII Control

ACCURPRESS 710010 CNC PRESS BRAKE, s/n 2965, 100 Ton Capacity, 10' Bed Length 102" Between Housings, Accurpress CNC Gauge System, 2-Axis Back Gauge

CHICAGO DREIS & KRUMP 338 SP PRESS BRAKE, s/n L8092, 35 Ton Capacity x 8', 141" Bed Length, 61" Between Housings

LARGE SELECTION OF PRESS BRAKE DIES



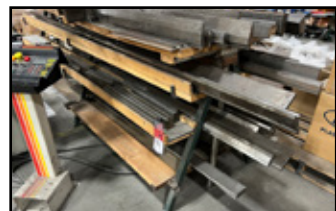
ACCURPRESS 710010 CNC PRESS BRAKE



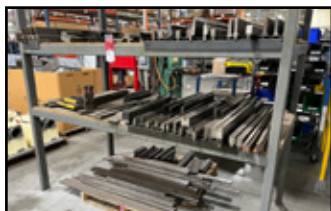
AMADA RG-80 CNC PRESS BRAKE



AMADA RG-80 CNC PRESS BRAKE



TOOLING FOR ACCURPRESS BRAKE



TOOLING FOR AMADA BRAKES



AMADA RG-80 CNC PRESS BRAKE

SHEARS

2017 TENNSMITH LM10-10 SHEAR, s/n 12017, 10' x 10 Ga. Capacity, 9' and 4' Squaring Arm

MAY TOOL MTC-52D36 CIRCLE SHEAR, s/n 1410, 0-350 RPM, Sabina Adjustable Speed Drive



MAY TOOL MTC-52D36 CIRCLE SHEAR



TENNSMITH LM10-10 SHEAR

INSERTION PRESS, SEAM WELDERS, SPOT WELDERS

INSERTION PRESS

2010 PEMSERTER SERIES 4
INSERTION PRESS, s/n L4-5071



PEMSERTER SERIES 4 INSERTION PRESS

SEAM WELDERS

2015 PANDJIRIS/JETLINE SEAMER CWF-50A SEAM WELDER, s/n 150300, w/ Jetline Series 9700 Wire Feed Control, Pandjiris EX Link Series Control, Miller Maxstar 350 Welding Power Source, s/n MF431032L, Miller Coolmate 3 Cooler

2017 TAYLOR WINFIELD LSCF-48-75 SEAM WELDER, s/n 170059, 75 KVA, w/ Entron En6001 Weld Control
TAYLOR WINFIELD LSCB-48-75 SEAM WELDER, s/n 67414, 75 KVA, w/ Entron EN6001 Weld Control



TAYLOR WINFIELD LSCF-48-75 SEAM WELDER



TAYLOR WINFIELD LSCB-48-75 SEAM WELDER



PANDJIRIS/JETLINE SEAMER CWF-50A SEAM WELDER



AMERICAN INDUSTRIAL EQUIPMENT AP40/24 SPOT WELDERS

SPOT WELDERS

AMERICAN INDUSTRIAL EQUIPMENT AP40/24 SPOT WELDER, s/n 4640, 40 KVA, Interlock Industries 105 Multiprocessor Control

AMERICAN INDUSTRIAL EQUIPMENT AP40/24 SPOT WELDER, s/n 738481, 40 KVA, Interlock Industries 105 Multiprocessor Control

ACME 2-36-30 SPOT WELDER, s/n 5310, 30 KVA, Entron Weld Control, Bernard Cooler

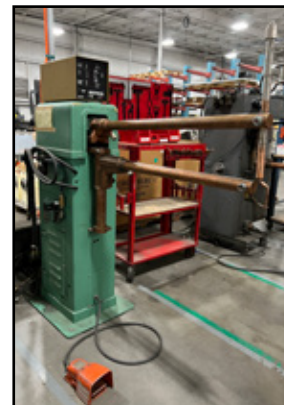
ACME 2-36-30 SPOT WELDER, s/n 8607, 30 KVA, Entron EN1000 Welder Control

ALPHIL ARG SPOT WELDER, s/n 4810, 30 KVA, Interlock Industries 105 Multiprocessor Control

ACME 1-18-20 SPOT WELDER, s/n 11808, 20 KVA, Entron Weld Control



ALPHIL ARG SPOT WELDER



ACME 2-36-30 SPOT WELDER

WELDING POSITIONER, WELDING, FLUID CHARGING & LEAK DETECTION

WELDING POSITIONER

PROFAX WP-1000 WELDING POSITIONER, s/n WP10-3124, 24.5" Table Dia, Load Capacity- 1000 Lb Vertical, 1750 Lb Horizontal, .2-2 RPM, 0-135 Degree Angle, w/ Pandjiris A Gripper

WELDING

MILLER CP-300 WELDING POWER SOURCE, s/n HH086217, w/ Miller Matic 30A Wire Feed

MILLER MAXSTAR 200 TIG WELDER, s/n ME100288L, w/ Miller Coolmate 1 Cooler

MILLER SYNCROWAVE 250 ARC WELDING POWER SOURCE, s/n JK573458, w/ Miller Coolmate 3 Cooler

MILLER SYNCROWAVE 250 ARC WELDING POWER SOURCE, s/n KJ271068, w/ Miller Coolmate 3 Cooler

MBC BP-1 TABLETOP WELDING POSITIONER, s/n 2397, 12" Dia Table, 1 PH

2010 IWT LYNX 3 MODULAR STUD WELDING SYSTEM, s/n 1003010

(3) IWT LYNX 4 MODULAR STUD WELDING SYSTEMS, s/n M1811001, M1702008, M1903025

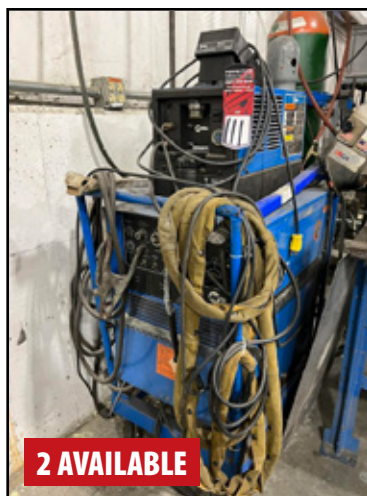
ALSO: MILLER WELDING TABLE, Torch Work Bench, Accessories, Consumables, etc.



PROFAX WP-1000 WELDING POSITIONER



MILLER MAXSTAR 200 TIG WELDER



MILLER SYNCROWAVE 250 ARC WELDING POWER SOURCE



MILLER CP-300 WELDING POWER SOURCE



ITW LYNX 3 MODULAR STUD WELDING SYSTEM



MILLER WELDING TABLE

FLUID CHARGING & LEAK DETECTION

2019 GALILEO TP CERTUS C12 REFRIGERANT FLUID & GAS CHARGING MACHINE, s/n 16L0140

INFICON PROTEC P3000 HELIUM LEAK DETECTOR, s/n 90001359945

For auction inquiries,
please contact Jennifer Reiner at
(847) 545-6374
or jennifer@perfectionindustrial.com



GALILEO TP CERTUS C12 REFRIGERANT FLUID & GAS CHARGING MACHINE



INFICON PROTEC P3000 HELIUM LEAK DETECTOR

MISC MACHINERY

MISC MACHINERY

JET JTM-4VS TURRET MILLING MACHINE, s/n 18112264, 9" x 49" Power Feed Table, 60-4200 RPM, Newall DP700 DRO, 3 HP

OKAMOTO ACCUGAR-124N SURFACE GRINDER, s/n 2203, 12" x 24" Magnet Chuck, 13.7" Vertical Clearance, 12" Grinding Wheel

BOSCHERT LB12K4 NOTCHER, s/n 2347

2006 THOMAS 350 ST SA CIRCULAR COLD SAW, s/n 06 01433

2019 ROBOVENT VENT BOSS 100 PORTABLE FUME EXTRACTOR, s/n 28742

ALSO: NIAGARA 340-P BENDING ROLL, s/n 6056, 36" x 14-16 Gauge, **BURR KING 1001 DUAL END BUFFER**, s/n 38916, KB Genesis AC Motor Speed Control, Hybrid Drive, 1-1/2 hp, w/ Grizzly G1028Z2 Collection System, **BURR KING 760 BELT SANDER**, s/n BK34611, 1-1/2 hp, (2) **BURR KING 750 BELT SANDERS**, s/n BK-38816, BK-38817, 1-1/2 hp, **BALDOR 2049-151D 2" BELT SANDER**, s/n X0312047079, 1-1/2 hp, 1 PH, 115/230V, **ROPER WHITNEY PEXTO 3617 CRIMPING & BEADING MACHINE**, s/n 1038-6-02, 18 Ga Capacity, **NIAGARA 104 BEAD ROLLER**, s/n 75009, **MITTLER BROTHERS 24" BEAD ROLLER**, w/ STAND, **RYOBI BD4600 4" X 6" BELT AND DISC SANDER**, **DELTA ROCKWELL 15-251 DRILL PRESS**, s/n 1369653, 10" x 10.5" Table, 7.5" Throat, 1/2 hp, **ROCKWELL 15-655 DRILL PRESS**, s/n 1602477, 11" x 14" Table, 7" Throat, 3/4 hp, **FLEETWOOD 917 HEAVY DUTY 5-SPEED DRILL PRESS**, s/n 34848, 11-1/4" Dia Table, Tapmatic Rx50 Reversible Tapping Head, **EVERETT 8-7 ABRASIVE CHOP SAW**, **ACCURA 01712 HORIZONTAL BANDSAW**, s/n 6062438, 7" x 12" Capacity, 1 hp, **FU HO F-300 VERTICAL BANDSAW**, s/n 31322, 19-3/4" x 16" Table, 11.5" Throat, 1/2 hp, Blade Welder, **LODGE & DAVIS ROLL FORMER**, Heavy Duty Punch, 25" Throat, **DI-ACRO NO. 24 SPARTAN BOX & PAN BRAKE**, s/n 1-2896, 24", **DAYTON 4Z328D BENCH TOP ARBOR PRESS**, s/n 200010, 1-Ton Capacity, **UNKNOWN MAKE BENCH TOP ARBOR PRESS**



JET JTM-4VS TURRET MILLING MACHINE



BOSCHERT LB12K4 NOTCHER



2019 ROBOVENT VENT BOSS 100 PORTABLE FUME EXTRACTOR



BURR KING 1001 DUAL END BUFFER



BURR KING 760 BELT SANDER



OKAMOTO ACCUGAR-124N SURFACE GRINDER



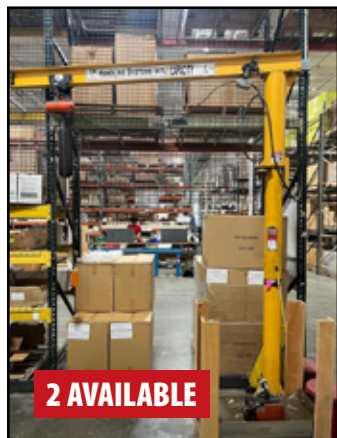
ASSORTED MACHINE TOOLS



NIAGARA 340-P BENDING ROLL



2006 THOMAS 350 ST SA CIRCULAR COLD SAW



HANDLING SYSTEMS 1/4 TON FREE STANDING JIB CRANE



CM LODERAIL FREE STANDING CRANE SYSTEM

CRANES

CM LODERAIL FREE STANDING CRANE SYSTEM, Approx. 15' x 12' x 11'4"H, 250 lb. Capacity, w/ Anver VTVH140 Vacuum System

HANDLING SYSTEMS 1/4 TON FREE STANDING JIB CRANE, Approx. 10'H x 8' Reach, w/ CM Shopstar Electric Hoist w/ Pendant Control

HANDLING SYSTEMS 1/4 TON FREE STANDING JIB CRANE, Approx. 10'H x 8' Reach, w/ CM Valustar Electric Hoist w/ Pendant Control

Bidding Available Through
BidSpotter

FACTORY SUPPORT EQUIPMENT

FACTORY SUPPORT EQUIPMENT

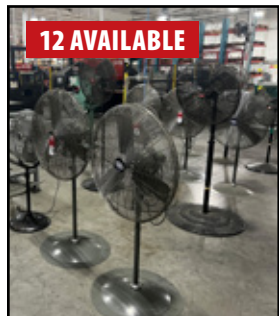
Tool Boxes, Hand Tools, Power Tools, Cordless Tools, Air Tools, Clamps, Tooling, Pop Riveters, Rivet Machines, Vises, Maple Top Work Benches, Shop Fans, Shop Carts, Lift Carts, Pallet Jacks, Cantilever Racking, Creform Modular Flexpipe Systems, Roller Conveyor, Safety Ladders, Shop Cabinets, Banding Carts, Fork Extensions



DAYTON 3C674C 36" SHOP FAN



WIRE UTILITY CARTS



PEDESTAL FANS



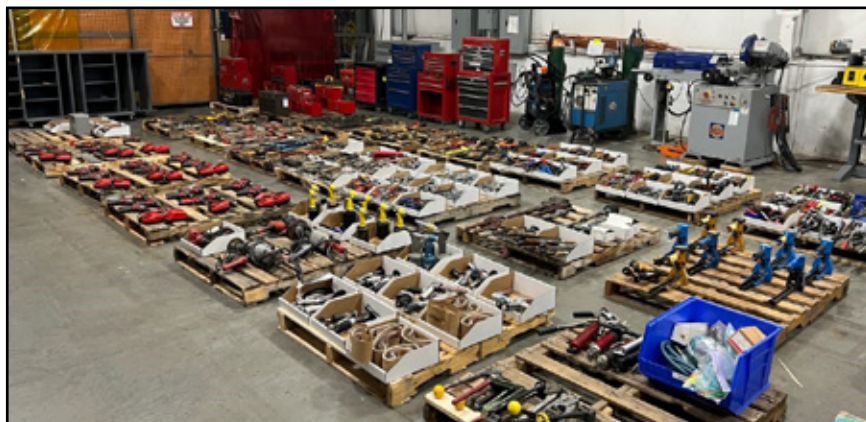
ULINE 8-STEP SAFETY LADDERS



ROLLING SHOP RACKS



FOREMAN'S DESK



LARGE QUANTITY OF POWER AND HAND TOOLS



ASSORTED LIFT CARTS



ROLLING SHOP CARTS



HAMACO MLI500-713JA
LIFT TABLE



SHOP FANS



BALL BEARING TOOL CABINETS

For auction inquiries, please contact Jennifer Reiner at
(847) 545-6374 or jennifer@perfectionindustrial.com

View our current auction schedule at www.perfectionindustrial.com

SALE DATE

Thursday, April 7, at 10:00 AM ET

SALE LOCATION

4003 Collins Lane, Louisville, KY 40245

INSPECTION

Wednesday, April 6,
by appointment only

REMOVAL

All items must be removed no later than Friday, April 22. All removal is strictly on an appointment only basis. Rigging note: All Buyers must contract any necessary rigging services exclusively with Graphic Equipment Movers, as they will be the only rigger allowed on-site. Bidders are encouraged to contact Graphic Equipment Movers prior to the auction sale to obtain rigging quotes on all applicable assets. Contact info: Graphic Equipment Movers - (615) 804-8306 - graphicmovers@gmail.com

TERMS OF SALE

An 18% Buyer's Premium will be charged on all assets purchased by buyers providing full payment is made within 48 hours following the sale. Acceptable forms of payment are cashier's check, company check (with bank letter of guarantee) or wire transfer within 48 hours of the sale close. For any Buyers failing to pay within the 48 hour stated payment period, the Buyer's Premium will be increased to 20%. All invoices paid with a credit card are subject to a 20% Buyer's Premium. Everything will be sold to the highest bidder, in accordance with the Auctioneer's customary "Terms of Sale", copies of which will be posted on the Auctioneer's website and subject to additional terms announced the day of sale. All items are sold "As is, Where is" without any warranty, express or implied.

FURTHER INFORMATION

For auction inquiries, please contact Jennifer Reiner at (847) 545-6374 or jennifer@perfectionindustrial.com.