

# LIVE WEBCAST <sup>ONLINE ONLY</sup> AUCTION



**EASTERN CLEARING, INC.**

**Owner Retiring - Full Service Clearing  
& Grubbing Contractor**

**FEATURING:** 2022 CBI 6800 CT & 2017 CBI TBG650 Horizontal Grinders, 2004 Morbark 1300A Tub Grinder, 2012 Morbark Model 23 Chip Harvester, (6) John Deere & CAT Excavators, new as 2020, (3) John Deere & CAT Track Loaders, new as 2018, 2015 John Deere 624K Wheel Loader, 2014 John Deere 300D Articulated Dump Truck, Plus Feller Buncher, Skidders, Log Loader, Highway Tractors, Detachable Neck Lowboy, Log & Walking Floor Trailers, Mechanics Trucks, Pick-Up Truck, and More



TEREX CBI MAGNUM FORCE TBG650 HORIZ. GRINDER



JOHN DEERE 245G LC EXCAVATOR



TEREX CBI MAGNUM FORCE 6800CT HORIZ. GRINDER

## SALE DATE

Wednesday, November 9, at 10:00 AM ET

## SALE LOCATION

6006 Bealeton Rd., Bealeton, VA 22712

## INSPECTION

Tuesday, November 8, by appointment only

## COMPLETE CATALOG & INFORMATION:

<https://perfection.global/eastern-clearing>

**PRE-AUCTION  
OFFERS INVITED  
ON MAJOR ASSETS**



**Perfection Industrial Sales**

ph +1-847-545-6374 • fax +1-847-427-8884

[www.perfectionindustrial.com](http://www.perfectionindustrial.com)

in conjunction with



ph +1-251-644-4401 • [www.m-epartners.com](http://www.m-epartners.com)



# HORIZONTAL & TUB GRINDERS

## HORIZONTAL & TUB GRINDERS

**2022 TEREX CBI MAGNUM FORCE 6800CT TRACK MOUNTED HORIZONTAL GRINDER**, s/n 112263, w/ CAT 1050 hp Engine, Metal Detector, Compressor, 508 hours, Unit Purchased in December 2021, Warranty on machine, which is transferable, runs through end of 2022. Warranty on engine, which is transferable, covers up to 3,000 hours or 3 years

**2017 TEREX CBI MAGNUM FORCE TBG650 TRACK MOUNTED HORIZONTAL GRINDER**, s/n 22033, w/ CAT 765 hp Engine, Metal Detector, Compressor, 5697 hours

**2004 MORBARK 1300A TUB GRINDER**, s/n 571347, w/ CAT 1050 hp Engine, Compressor, MORLIFT 400 Hydraulic Boom & Grapple, Cab, 5643 hours, NOTE: New Mill and Tub installed Fall 2021

**2012 MORBARK 23WCL CHIPARVESTOR WHOLE TREE CHIPPER**, s/n 194, w/ CAT 800 hp Engine, Compressor, MORLIFT Hydraulic Boom & Grapple, Cab, 6532 hours



TEREX CBI MAGNUM FORCE 6800CT HORIZ. GRINDER



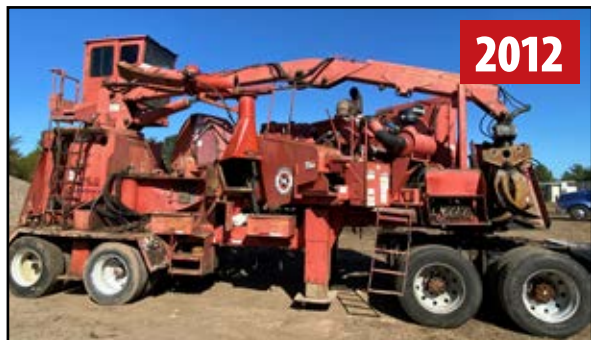
TEREX CBI MAGNUM FORCE 6800CT HORIZ. GRINDER



2004 MORBARK 1300A TUB GRINDER



2004 MORBARK 1300A TUB GRINDER



MORBARK 23WCL CHIPARVESTOR CHIPPER



TEREX CBI MAGNUM FORCE TBG650 HORIZ. GRINDER

**PRE-AUCTION OFFERS INVITED ON MAJOR ASSETS**

View our current auction schedule at [www.perfectionindustrial.com](http://www.perfectionindustrial.com)



# EXCAVATORS

## EXCAVATORS

(2) 2020 JOHN DEERE 245G LC EXCAVATORS, s/n 1FF245GXCKF801095, 1FF245GXHKF801210, 4465 / 4582 Hours, 1.29 CY 42" ESCO Bucket w/ Hydraulic Thumb, Bolt-On Guarding

2015 JOHN DEERE 300G LC EXCAVATOR, s/n 1FF300GXHFF730129, 6824 Hours, 1.87 CY 48" Bucket w/ Hydraulic Thumb, Bolt-On Guarding

2014 CATERPILLAR 320E LRR EXCAVATOR, s/n CAT0320EJTFX01087, 11322 Hours, 1.56 CY 48" Bucket w/ Hydraulic Thumb, Bolt-On Guarding

2014 JOHN DEERE 250G LC EXCAVATOR, s/n 1FF250GXJEE609160, 9396 Hours, 1.46 CY 42" Bucket w/ Hydraulic Thumb

2012 CATERPILLAR 329EL EXCAVATOR, s/n CAT0329ELPLW00322, 12580 Hours, w/ Hydraulic Thumb, Bolt-On Guarding



JOHN DEERE 245G LC EXCAVATOR



JOHN DEERE 300G LC EXCAVATOR



CATERPILLAR 320E LRR EXCAVATOR



JOHN DEERE 245G LC EXCAVATOR



JOHN DEERE 250G LC EXCAVATOR

### SALE DATE

Wednesday, November 9,  
at 10:00 AM ET

### INSPECTION

Tuesday, November 8,  
by appointment only

### SALE LOCATION

6006 Bealeton Rd.,  
Bealeton, VA 22712

**Pre-Auction  
Offers Invited  
on Major Assets**



# TRACK & WHEEL LOADERS, ARTICULATED DUMP TRUCK

## TRACK & WHEEL LOADERS

2018 JOHN DEERE 755K TRACK LOADER, s/n 1T0755KXHJE334578, 6063 Hours, w/ Grapple Root Rake

2014 JOHN DEERE 755K TRACK LOADER, s/n 1T0755KXKEE256736, 7025 Hours, w/ Grapple Root Rake

2005 CATERPILLAR 963C TRACK LOADER, s/n CAT0963CCBBD01069, 20106 Hours, w/ Grapple Root Rake, Bolt-On Guarding

2015 JOHN DEERE 624K WHEEL LOADER, s/n 1DW624KZCFF669384, 6300 Hours, w/ Grapple Fork Attachment, New Rubber



2018

JOHN DEERE 755K TRACK LOADER



2014

JOHN DEERE 755K TRACK LOADER



2015

JOHN DEERE 624K WHEEL LOADER



2005 CATERPILLAR 963C TRACK LOADER



2014

JOHN DEERE 300D ARTICULATED DUMP TRUCK

## ARTICULATED DUMP TRUCK

2014 JOHN DEERE 300D  
ARTICULATED DUMP TRUCK,  
s/n 1DW300DXCEE660449, 6257 Hours

For auction inquiries,  
please contact  
Jennifer Reiner at  
(847) 545-6374



# FORESTRY EQUIPMENT, TRUCK TRACTORS

## FORESTRY EQUIPMENT

**2004 TIGERCAT 724D FELLER BUNCHER**, s/n 7240614, w/ TIGERCAT 5702 Blade Head, 8863 Hours

**2002 TIGERCAT 640 LOG HAULER**, s/n 6401501, 7631 Hours

**2006 CATERPILLAR 525B GRAPPLE SKIDDER**, s/n C3KZ02117, 13335 Hours, w/ Dual Arch, Bolt-On Guarding

**2001 CATERPILLAR 525B GRAPPLE SKIDDER**, s/n K3KZ00509, 16273 Hours, w/ Bolt-On Guarding,

**BARKO 160A T/A TRAILER MOUNT LOG LOADER**, s/n 20012, 1796 Hours, w/ Saw Head

**CORD KING COMPACT WOOD PROCESSOR**, s/n CMI-60-JDT2511-205, 890 Engine Hours, 593 Machine Hours

**2005 WILDCAT 626 COUGAR TROMMEL SCREEN**, 1W9SS53275F351345



BARKO 160A T/A TRAILER MOUNT LOG LOADER



2004 TIGERCAT 724D FELLER BUNCHER



2002 TIGERCAT 640 LOG HAULER



2006 CATERPILLAR 525B GRAPPLE SKIDDER



2001 CATERPILLAR 525B GRAPPLE SKIDDER

## TRUCK TRACTORS

**2000 MACK CL713 TRI-AXLE TRUCK TRACTOR**, VIN 1M1AD62Y1YW010317

**2001 MACK CH613 T/A TRUCK TRACTOR**, VIN 1M1AA18Y11W138145

**2000 MACK CH613 T/A TRUCK TRACTOR**, VIN 1M1AA13Y7XW108468, Requires Repair

**2003 MACK CV713 T/A TRUCK TRACTOR**, VIN 1M2AG10Y63M005224, Requires Repair



MACK CL713 TRI-AXLE TRUCK TRACTOR



2001 MACK CH613 T/A TRUCK TRACTOR



MACK CH713 T/A TRUCK TRACTOR



# TRAILERS, PICKUP TRUCK, SERVICE VEHICLES & MISCELLANEOUS

## TRAILERS

**2018 TRAIL KING DETACHABLE NECK TRI-AXLE LOWBOY TRAILER**, VIN 1TKJ05337J085387, 55 Ton Capacity

**2003 EAST T/A WALKING FLOOR SEMI TRAILER**, VIN 1E1U1Y2863RJ32487

**2003 PITTS T/A LOG TRAILER**, VIN 5JYLT42222P030588

**BIG JOHN T/A LOG TRAILER**, VIN 1B9PA4221WJFBJ1609

**STEC T/A DUMP TRAILER**, VIN 1S9DSJ2T8D1007062

**(4) FRUEHAUF & GREAT DANE T/A CHIP TRAILERS**

## PICKUP TRUCK

**2018 RAM 2500HD 4X4 PICKUP TRUCK**, VIN 3C6UR5HJ9JG358154

## SERVICE VEHICLES & MISCELLANEOUS

**INTERNATIONAL 4900 FUEL/LUBE TRUCK**, VIN 1HTSDAAN6WH603853, 346,500 Miles

**PIPER'S 96" KNIFE GRINDER**

**ALSO:** T/A 5th Wheel Dolly, CATERPILLAR 963C Track Loader (Parts Unit) JOHN DEERE 300G Excavator (Parts Unit), Lube Service Body, Fuel & Van Trailers, Conveyor, Large Selection of Attachments Including Buckets, Grapples, Forks, Mechanic/Repair Shop Equipment, Air Compressor, Welders, Fuel Tanks, Etc.



2018 TRAIL KING DETACHABLE NECK TRI-AXLE LOWBOY TRAILER



2003 PITTS T/A LOG TRAILER



BIG JOHN T/A LOG TRAILER



2003 EAST T/A WALKING FLOOR SEMI TRAILER



RAM 2500HD 4X4 PICKUP TRUCK



INTERNATIONAL 4900 FUEL/LUBE TRUCK

For auction inquiries, please contact Jennifer Reiner at  
(847) 545-6374 or [jennifer@perfectionindustrial.com](mailto:jennifer@perfectionindustrial.com)

Bidding Available Through  
**BidSpotter**

View our current auction schedule at [www.perfectionindustrial.com](http://www.perfectionindustrial.com)

### SALE DATE

Wednesday, November 9, at 10:00 AM ET

### SALE LOCATION

6006 Bealeton Rd., Bealeton, VA 22712

### INSPECTION

Tuesday, November 8,  
by appointment only

### REMOVAL

**All items must be removed no later than Wednesday, November 23. All removal is strictly on an appointment only basis.** Anyone removing purchased items with a lift truck or another powered vehicle must have a certificate of insurance with a \$2M General Liability policy, the policy must include a Worker's Compensation rider, and that certificate of insurance must be provided to the auctioneer for review and approval prior to the auction.

### TERMS OF SALE

A 12% Buyer's Premium will be charged on all assets purchased by buyers providing full payment is made within 48 hours following the sale. Acceptable forms of payment are cashier's check, company check (with bank letter of guarantee) or wire transfer within 48 hours of the sale close. For any Buyers failing to pay within the 48 hour stated payment period, the Buyer's Premium will be increased to 14%. All invoices paid with a credit card are subject to a 14% Buyer's Premium. Everything will be sold to the highest bidder, in accordance with the Auctioneer's customary "Terms of Sale", copies of which will be posted on the Auctioneer's website and subject to additional terms announced the day of sale. All items are sold "As is, Where is" without any warranty, express or implied.

### FURTHER INFORMATION

For auction inquiries, please contact Jennifer Reiner at (847) 545-6374 or [jennifer@perfectionindustrial.com](mailto:jennifer@perfectionindustrial.com).

View our current auction schedule at [www.perfectionindustrial.com](http://www.perfectionindustrial.com)