

ILPRA F5 THERMOFORMING PACKAGERS

**2014**

Former Frozen Pizza Manufacturer  
DaVinci Food Products, Ltd.



**Machinery & Equipment  
for the Production  
& Packaging of Fresh  
& Frozen Italian Food  
Products, Pizzas & Pasta**



CLM DUAL SOURCE OVEN (EXIT VIEW)

**2010**

**Sale Closing From:** Tuesday, June 21, 2016 at 11:00 AM EDT

**Sale Location:** 5655 Rue Beaulieu, Montreal, QC, H4E 3E4 Canada

**Inspection:** Monday, June 20, 2016 from 9:00 AM to 4:00 PM EDT



HIGH TEMP TUNNEL OVEN, PACKAGING MACHINES, MIXERS,
PROOFERS, SPIRAL CONVEYORS, ETC.



JH DAY DOUGH MIXER



CLM DUAL SOURCE OVEN (ENTRY VIEW)



BAMAK CONTINUOUS PROOFER

2010 CLM FOOD INDUSTRY SYSTEMS VESUVIO
STAINLESS STEEL HIGH TEMPERATURE DUAL
SOURCE TUNNEL OVEN, s/n 176/08, w/Wood Burning
or Natural Gas Capable, Stone Slat Conveyor, Automatic
Wood Log Feed System, Touch Screen Control, NOTE:
Offered Subject to 24-Hour Owner Confirmation

(2) 2014 ILPRA F5 THERMOFORMING PACKAGING
MACHINES, w/Stainless Steel Construction, Touch
Screen Control, Vacuum Systems, NOTE: Offered Subject
to 24-Hour Owner Confirmation

JH DAY TYPE F HERCULES
DOUGH MIXER
SIGMA DOUGH MIXER
HOBART DOUGH MIXER
KASON SINGLE-DECK S/S SIFTER
GEMINI DOUGH ROUNDER



AUTO CONTINUOUS PROOFER



TRANSFER CONVEYOR



APACHE PIZZA PRESSES

**PLUS:** CONICAL DOUGH ROUNDER, AUTOMATIC CONTINUOUS
PROOFERS, ASSORTED SHEETERS AND EXTRUDERS, S/S
CONVEYORS, PEPPERONI SLICERS, CHEESE SHREDDERS,
PIZZA SAUCE DOSERS, SPIRAL CONVEYORS W/ALL S/S
CONSTRUCTION, COMPRESSORS, COLD ROOM AND FREEZER
COMPONENTS, APACHE PIZZA PRESSES, S/S SINKS, TABLES,
6,000 ALUMINUM OVEN TRAYS, S/S COIL JACKETED TANK WITH AGITATION, TOP DOWN LABELLER,
SHANKLIN AUTOMATIC "L-BAR" SEALERS, CASE SEALERS, CARTONER, INK JET PRINTERS



SPIRAL CONVEYORS

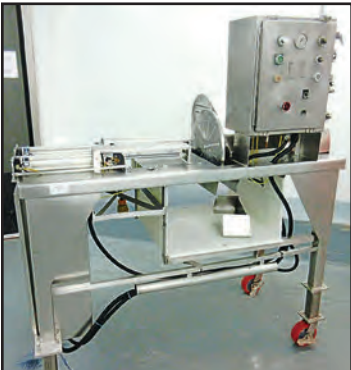


CONICAL DOUGH ROUNDER

Auction Will Be
Conducted in
U.S. Funds



SUPPORT ITEMS



CHEESE SHREDDER



SPIRAL CONVEYORS



METAL DETECTOR



PIZZA SAUCE DOSER



TRANSFER CONVEYOR

To discuss your requirements
for an auction, please call
Perfection Industrial
847-545-6374



# TEST KITCHEN EQUIPMENT, MAINTENANCE DEPARTMENT, 1969 VW BEETLE & SCRAP OPPORTUNITY



MECAPACK F5910 COMPACT THERMOFORMING LINE



SHANKLIN FORM-FILL SEAL SHRINK WRAPPER



CASE SEALER/TAPER



TEST KITCHEN



TEST KITCHEN

**TEST KITCHEN INCLUDING:** HOBART MIXER, REFRIGERATOR, PROOFER, GARLAND S/S SKILLET, SHEETERS, CONTINUOUS PIZZA OVEN, SINGLE-DECK PIZZA OVEN

**MAINTENANCE DEPARTMENT W/SPARE PARTS STORES, BEARINGS, MOTORS, DRIVE CHAINS AND BELTS, HARDWARE, CONVEYORS, ELECTRICAL SPARES, PLUMBING SPARES, POWER AND HAND TOOLS, WELDERS, MACHINE TOOLS, WORK BENCHES, ETC.**

**TREMENDOUS STAINLESS STEEL, ALUMINUM, COPPER AND STEEL SCRAP OPPORTUNITY.**



REFRIGERATION UNITS



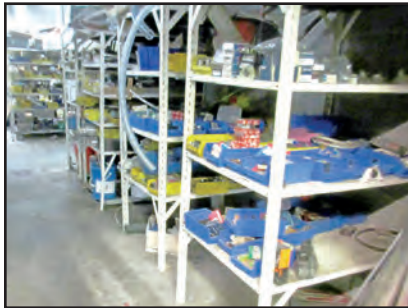
HOBART MIXER



GARLAND S/S SKILLET



MAINTENANCE DEPARTMENT



BEARINGS



MAINTENANCE DEPARTMENT



**SPECIAL FEATURE:** COMPLETELY REFURBISHED 1969 VOLKSWAGON BEETLE W/1.5 LITRE ENGINE AND RARE "AUTO CLUTCH"

View our current auction schedule at [www.perfectionindustrial.com](http://www.perfectionindustrial.com)

**Sale Closing From:** Tuesday, June 21, 2016 at 11:00 AM EDT  
**Sale Location:** 5655 Rue Beaulieu, Montreal, QC, H4E 3E4 Canada  
**Inspection:** Monday, June 20, 2016 from 9:00 AM to 4:00 PM EDT

## REMOVAL:

All small lots must be removed by Monday, June 27. All Major items must be removed no later than Friday, July 8. Removal times are Monday through Friday, from 8:00 AM to 4:00 PM, excluding Friday, June 24. Weekends and extended hours by appointment.

## FOR FURTHER INFORMATION

For further information contact Jennifer Reiner at (847) 545-6374 or [jennifer@perfectionindustrial.com](mailto:jennifer@perfectionindustrial.com). For accounting and invoicing questions, contact Inesa Dicipetris at (847) 427-3333 or [inesa@perfectionindustrial.com](mailto:inesa@perfectionindustrial.com).

## TERMS OF SALE

An 18% buyer's premium will be charged on all assets. The buyer's premium will be reduced to 15% for payments made by means of cash, cashier's check, company check (with bank letter of guarantee) or wire transfer within 48 hours of sale close. Credit card payments are limited to a maximum of \$2,000. All items are sold "As is, Where is" without any warranty, express or implied.

**Auction Will Be Conducted in U.S. Funds**

Online Bidding at [www.perfectionindustrial.com](http://www.perfectionindustrial.com)

To discuss your requirements for an auction, please call Perfection Industrial **847-545-6374**