

# LIVE WEBCAST ONLINE ONLY AUCTION



## COMPLETE BARE WIRE MANUFACTURING & PLATING FACILITY

**FEATURING:** (11) NIEHOFF & SAMP Multiwire & Single Wire Drawers; SICTRA Rod Breakdown, (4) Plating Lines Incl. 2016 CANDOR Nickel Plating Lines; 2000 THERMOTEC Vacuum Annealing Furnace; (6) DIGEP 250mm Double Twist Bunchers; (2) BARTELL 12-Bay Tubular Stranders; 2018 REEL POWER TUA-10-10 Power Spooler; FILTERTECH Coolant Filtration System, Machine Shop & Maintenance Equipment; Factory Support Equipment, & More

### SALE DATE

Tuesday, April 12, at 11:00 AM ET

### SALE LOCATION

301 Griffith Road, Chicopee,  
Massachusetts 01022

### INSPECTION

Monday, April 11, from 8:30 AM to  
4:30 PM ET, by Appointment Only

Bidding Available Through  
**BidSpotter**



**PERFECTION  
Industrial Sales**

ph +1-847-545-6374 • fax +1-847-427-8884  
[www.perfectionindustrial.com](http://www.perfectionindustrial.com)



SAMP MT6 16-WIRE MULTIWIRE DRAWING LINE



2016 HAGEN & FUNKE DUKA 800B HIGH-SPEED DUAL FLYER CONE PAYOFF

Complete Catalog & Information Available at  
<https://perfection.global/barewire>

**Pre-Auction Offers Invited  
on Major Assets**

In Conjunction With:

Commission



ph 401-943-3777  
[www.commissionbrokers.com](http://www.commissionbrokers.com)



## (3) MULTIWIRE DRAWERS, ROD BREAKDOWN, (8) SINGLE END DRAWERS

### (3) MULTIWIRE DRAWERS & ROD BREAKDOWN

**2000 SAMP MT6 MULTIWIRE DRAWING LINE**, w/MT6N 8+8.37 16-Wire Drawer, s/n 1A003801, Annealer, (2) TE/63-N Spoolers, s/n 1C003803/804, (1) 2020 BD630 Spooler, s/n SH19R004.7A, 16-Wire Overhead Payoff, Drive Cabinet, Operator Console (D#6)

**NIEHOFF MMH101 MULTIWIRE DRAWING LINE**, w/MMH101 14-Wire Drawer, RM140 Annealer, s/n RM140.2.15.1500, (2) S500.2.F.3.E Spoolers, 14-Wire Overhead Payoff, Drive Cabinet, Operator Console, (D#1)

**NIEHOFF MMH101 MULTIWIRE DRAWING LINE**, w/MMH101 14-Wire Drawer, RM140 Annealer, s/n RM140.2.10.1500, (2) S500.2.F.3.E. Spoolers, 14-Wire Overhead Payoff, Drive Cabinet, Operator Console (D#2)

**SICTRA ROD BREAKDOWN LINE**, w/SICTRA 13-Die Rod Breakdown Drawer, In-Line Annealer, 22" Dual Spooler, BEKAERT ECC36 Down Coiler



**2000**  
SAMP MT6 MULTIWIRE DRAWING LINE



**2020**  
SAMP BD630 SPOOLER



**14-WIRE**  
(1 OF 2) NIEHOFF MMH101 MULTIWIRE DRAWING LINES



**2000**  
(2) SAMP TE/63-N SPOOLERS

Complete Catalog & Information  
Available at  
<https://perfection.global/barewire>





(1 OF 2) NIEHOFF MMH101 MULTIWIREDRAWING LINES



(2) NIEHOFF S500.2.F.3.E SPOOLERS



SAMP TE/63-N SPOOLER



VIEW OF SAMP SINGLE END DRAWING LINES

## (8) SINGLE END DRAWERS

**2006 SAMP TR/3-SV SINGLE END DRAWING LINE**, s/n 9809707, w/Ceramic Draw Blocks, Drive Cabinet, ZUMBACH ODAC0131.1380 Dia. Gauge, s/n 030848, TE/63-N Spooler (Sold Separately), (SW #5)

**2001 SAMP TR/3-SV SINGLE END DRAWING LINE**, w/Ceramic Draw Blocks, Drive Cabinet, ZUMBACH ODAC0131.1380 Dia. Gauge, s/n 030847, TE/63-N Spooler (Sold Separately) (SW #4)

**2001 SAMP TR/3-SV SINGLE END DRAWING LINE**, s/n 9809708, w/Ceramic Draw Blocks, Drive Cabinet, TE/25-A Spooler (SW#1)

**2005 REFURB NIEHOFF S631 UMBAU 630MM SPOOLER**, s/n 21.050548 (SW#1)

**SAMP TR/4-SV SINGLE END DRAWING LINE**, s/n 9801901, w/Ceramic Draw Blocks, 2012 ZUMBACH ODAC18XY-J, s/n 2808.3613.30.1, TE/25-A Spooler, Drive Cabinet (SW #8)

**SAMP TR/4-SV SINGLE END DRAWING LINE**, s/n 1A901004, w/Ceramic Draw Blocks, TE/25-A Spooler, Drive Cabinet (SW #3)

**SAMP TR/4-SV SINGLE END DRAWING LINE**, s/n 9408105, w/Ceramic Draw Blocks, TE/25-A Spooler, Drive Cabinet (SW #6)

**SAMP TR/4-SV SINGLE END DRAWING LINE**, s/n 9408104, w/Ceramic Draw Blocks, TE/25-A Spooler, Drive Cabinet (SW #7)

**SAMP TR/4-SV SINGLE END DRAWING LINE**, s/n 1A901005, Ceramic Draw Blocks, w/ TE/25-A Spooler, Drive Cabinet, 1999 (FOR PARTS) (SW#2)

### SALE DATE

Tuesday, April 12, at 11:00 AM ET

### SALE LOCATION

301 Griffith Road, Chicopee, Massachusetts 01022

### INSPECTION

Monday, April 11, from 8:30 AM to 4:30 PM ET, by Appointment Only



SAMP TR/3-SV SINGLE END DRAWER

**+1-847-545-6374**



### (3) STRANDERS, CABLER, (7) BUNCHERS & POWER SPOOLER

#### (3) STRANDERS, CABLER, (7) BUNCHERS & POWER SPOOLER

NEW ENGLAND BUTT 18-HEAD 22" RIGID STRANDER, s/n NA  
 BARTELL B64 12-BAY TUBULAR STRANDER, s/n B64-12L-431  
 BARTELL B62 12-BAY TUBULAR STRANDER, s/n B62-12R-62  
 ENTWISTLE (COOK) 48" CABLER, s/n NA

(6) DIGEP DSO2X25BV 250MM DOUBLE SIDED DOUBLE TWIST BUNCHERS, s/n 29-313-015, 29-313-012, 29-313-013, 29-313-011, 29-313-014, 29-313-009

LESMO 1000 BUNCHER, s/n NA

2018 REELPOWER TUAF-10-10 POWER SPOOLER, s/n 015773-000-01, w/4,000 Lb Tension Winch, OD: 60", ID: 20", AOW: 32", Arbor 4", 15 HP, Vector Drive, Electric Level-Wind, Braking Snubber



BARTELL B64 12-BAY TUBULAR STRANDER



BARTELL B62 12-BAY TUBULAR STRANDER



DIGEP 250MM DOUBLE TWIST BUNCHERS

**6 AVAILABLE**



**2018**

REELPOWER  
TUAF-10-10  
POWER  
SPOOLER

FISCHSCOPE  
INLINE  
THICKNESS  
GAUGE



CANDOR 400 METERS/MIN. NICKEL PLATING LINE



NEW ENGLAND BUTT 18-HEAD  
22" RIGID STRANDER



HUTTNER VD-650-SN-TT  
HIGH SPEED STATIC COILER



EVALD WASTEWATER  
EVAPORATOR SYSTEM



DITTMANN  
1000-K  
VACUUM  
EVAPORATOR



DITTMANN  
500-K  
VACUUM  
EVAPORATOR

View our current auction schedule at [www.perfectionindustrial.com](http://www.perfectionindustrial.com)



# HIGH SPEED PLATING

## HIGH SPEED PLATING

**2016 CANDOR NICKEL PLATING LINE**, w/Max. Line Speed: 400 Meters/Min., 36" Dual Flyer Cone Payoff, Reel Trucks, LLOYD & BOUVIER Tension Stand, Applications/Tanks: (1) Degreaser, (2) Alkaline Etch, (3-6) Rinse, (7) Dancer, (8) Activation, (9-10) Rinse, (11) Horizontal Dancer, 11A-11B: Nickel Plating, Application: (12-15) Rinse, HUTTNER VD-650-SN-TT High Speed Static Coiler, s/n H15/1474, Touch Screen Control, Drive Cabinets, Transformers **\*SOLD\***

**2016 HAGEN & FUNKE DUKA 800B HIGH-SPEED DUAL FLYER CONE PAYOFF**, s/n 12827, w/Model BR420FS Tension Capstan, NOTE: BRAND NEW—Purchased at over 200,000 Euros to Operate w/CANDOR Plating Line but Never Installed

**2016 EVALED PC F 2.4 FF4S WASTEWATER EVAPORATOR SYSTEM** **\*SOLD\***

**STEULER ST2400AG SILVER PLATING LINE**, Order #71-385 SBM, w/Max. Line Speed: 600 Meters/Min., 30" Dual Flyer Cone Payoff and Reel Trucks, DITTMANN 500-K Vacuum Evaporator, FISCHERSCOPE XM4000 Inline Coating Thickness Gauge, BEKAERT ECC18/22 Down Coiler, s/n LAB14-2/802-8 (AG1) **\*SOLD\***

**STEULER ST6000 NI NICKEL PLATING LINE**, s/n 71385 SBM, w/Max. Line Speed: 900 Meters/Min., 30" Dual Flyer Cone Payoff and Reel Trucks, DITTMANN 1000-K Vacuum Evaporator, BEKAERT ECC18/22 Down Coiler, s/n LAB14-1/802-5 (NP1) **\*SOLD\***

**STEULER B400 DUAL WIRE TIN PLATING LINE**, s/n NA, w/Max. Line Speed: 400 Meters/Min., 30" Dual Flyer Cone Payoff and Reel Trucks, Tension Stand, BONGARD STN-600 Down Coiler (TP1/2)



CANDOR CHEMICAL PROCESSING SYSTEM



STEULER SILVER PLATING LINE



STEULER NICKEL PLATING LINE



STEULER DUAL WIRE TIN PLATING LINE



2016 HAGEN & FUNKE FLYER CONE PAYOFF



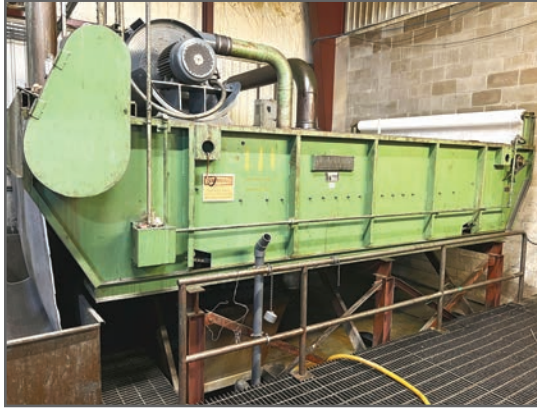
BEKAERT  
ECC18/22  
DOWN COILER



BONGARD  
STN-600  
DOWN COILER



# VACUUM ANNEALER, FILTER & COOLING SYSTEMS, MACHINE SHOP



FILTER TECH SCF2 3200 FILTRATION SYSTEM



FILTER TECH PGF4-780 FILTRATION SYSTEM



(2) FILTER TECH LF3-108 FILTRATION SYSTEMS



THERMOTECH VACUUM ANNEALING FURNACE

## VACUUM ANNEALER

THERMOTECH VTF36.36.64 NATURAL GAS FIRED VACUUM ANNEALING FURNACE, s/n 3002, w/36" x 36" x 64" Chamber, .9MM BTU/Hr., HONEYWELL Control

## FILTER & COOLING SYSTEMS

FILTERTECH SCF2 3200 FILTRATION SYSTEM, s/n 221921C96

FILTERTECH PGF4-780 FILTRATION SYSTEM, s/n 10L3047-5

(3) HYDROTHRIFT CE-260-65 COOLING SYSTEMS, s/n 97-1711B, 97-2024-1, 97-1711-A, 125 PSI Max. WP, 15 HP, Cooling Tower

HYDROTHRIFT CE-520-17 COOLING SYSTEM, s/n 44-7541, 125 PSI Max. WP, Cooling Tower

## MACHINE SHOP

LUX-MATTER LATHE, s/n NA, 14" Swing x 36" Between Centers, 6" 3-Jaw Chuck, Quick Change Tool Post, 85-2,000 RPM; LINCOLN POWER MIG 255 MIG WELDER, s/n U1990919512; LINCOLN IDEALARC RM-500 ARC WELDER, s/n AC-276053; DAKE 50H H-FRAME SHOP PRESS, s/n 19860; DAKE NO. 1-1/2 B1 BENCH TOP ARBOR PRESS; CLAUSING 2277 20" DRILL PRESS, s/n 20-532707, 150-2,000 RPM, 15.5" x 18" Table; 30" MILL DRILL, s/n 931470, 8" x 28.5" T-Slotted Table, 2 HP; 2006 VICTORY 7" HORIZONTAL BANDSAW, s/n 06075160; MILWAUKEE 505 BENCH GRINDER, 3/4 HP, 3,450 RPM; DAYTON 6Y945D 2" X 6" BELT AND DISC SANDER, s/n 141100053; BRANSON 8510R-MTH ULTRASONIC CLEANER, s/n RPB110035964E; SKAT-BLAST DRY BLAST SYSTEM, Approx. 58" x 34" Working Area, w/Collection System

ALSO: TORCH CART, WELDING TABLES, TAPS, DRILLS, MACHINE VISES, TOOL CABINETS, AND MORE

### SALE DATE

Tuesday, April 12, at 11:00 AM ET

### SALE LOCATION

301 Griffith Road, Chicopee,  
Massachusetts 01022

### INSPECTION

Monday, April 11, from 8:30 AM to  
4:30 PM ET, by Appointment Only



HYDROTHRIFT CE-260-65 COOLING SYSTEMS



HYDROTHRIFT COOLING TOWER

(2 OF 3) AVAILABLE



# MAINTENANCE & SPARES, TRAILERS



LUX-MATTER LATHE



WELDERS



VIEW OF SPARES AND PARTS



VIEW OF SPARES AND PARTS

## MAINTENANCE & SPARES

2011 TULSA POWER RRP-28-02 POWERED ROLLER PAYOFF, s/n 33114

LARGE QUANTITY OF MACHINE SPARE PARTS, MOTORS, PUMPS, TRANSFORMERS, DRIVES, HYDRAULICS, BEARINGS FASTENERS, EMT, ELECTRICAL SUPPLIES, BREAKERS, OVERLOADS, REGULATORS, SPRINGS, PULLEYS, PLUMBING SUPPLIES, BELTS, AND MORE

**ALSO:** PALLET RACKING, PALLET JACKS, LIFT CARTS, BANDING CARTS, OVER (1,000) 6", 8", 10", 16" AND 30" REELS, (500) STEMS, 48", 63" AND 66", WOOD TOP WORK BENCHES, FACTORY CAT FLOOR SWEEPER, TOOLS, AND MORE

## TRAILERS

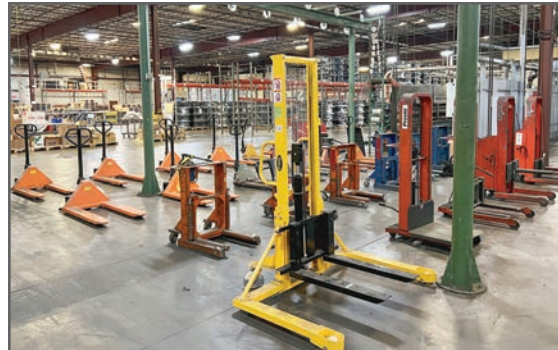
(2) TRAILMOBILE 011A-1UAW DRY VAN TRAILERS, VIN 1PT011AJ5R9009537, 1PT011AJ7R9009538



VIEW OF STEMS



VIEW OF REELS



VIEW OF ASSORTED LIFTS



VIEW OF BEARINGS



FACTORY CAT MINI-HD POWER SCRUBBER



VIEW OF FANS

To discuss your requirements for an auction, please call  
Perfection Industrial +1-847-545-6374

Pre-Auction Offers Invited on Major Assets





**PERFECTION  
Industrial Sales**

Perfection Industrial Sales –2550 Arthur Ave., Elk Grove Village, IL 60007

Phone: +1-847-545-6374 – Fax: +1-847-427-8884

[www.perfectionindustrial.com](http://www.perfectionindustrial.com)



Presorted  
First Class Mail  
U.S. Postage  
PAID  
Eugene, Oregon  
Permit No. 17

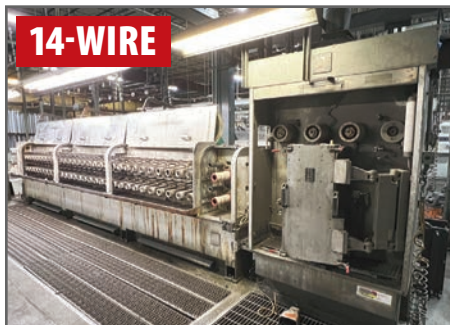
# LIVE WEBCAST **ONLINE ONLY** AUCTION

**SALE DATE** Tuesday, April 12, at 11:00 AM ET

**SALE LOCATION** 301 Griffith Road, Chicopee, Massachusetts 01022



**COMPLETE BARE WIRE MANUFACTURING  
& PLATING FACILITY**



(1 OF 2) NIEHOFF MMH101 MULTIWIREDRAWING LINES

# LIVE WEBCAST **ONLINE ONLY** AUCTION



**COMPLETE BARE WIRE  
MANUFACTURING  
& PLATING FACILITY**

## REMOVAL

All small items must be removed no later than Friday, April 15. Remaining items must be removed no later than Friday, May 6. All removal is strictly on an appointment only basis. Anyone removing purchased items with a lift truck or another powered vehicle must have a certificate of insurance with a \$2M General Liability policy, the policy must include a Worker's Compensation rider, and that certificate of insurance must be provided to the auctioneer for review and approval prior to the auction.

## TERMS OF SALE

An 18% Buyer's Premium will be charged on all assets purchased by buyers providing full payment is made within 48 hours following the sale. Acceptable forms of payment are cashier's check, company check (with bank letter of guarantee) or wire transfer within 48 hours of the sale close. For any Buyers failing to pay within the 48 hour stated payment period, the Buyer's Premium will be increased to 20%. All invoices paid with a credit card are subject to a 20% Buyer's Premium. Everything will be sold to the highest bidder, in accordance with the Auctioneer's customary "Terms of Sale", copies of which will be posted on the Auctioneer's website and subject to additional terms announced the day of sale. All items are sold "As is, Where is" without any warranty, express or implied.

## FOR FURTHER INFORMATION

For auction inquiries, please contact Jennifer Reiner at 1+847-545-6374 or [jennifer@perfectionindustrial.com](mailto:jennifer@perfectionindustrial.com)

## SALE DATE

Tuesday, April 12, at 11:00 AM ET

## SALE LOCATION

301 Griffith Road, Chicopee, Massachusetts 01022

## INSPECTION

Monday, April 11, from 8:30 AM to 4:30 PM ET, by Appointment Only

Bidding Available Through **BidSpotter**

**Pre-Auction Offers Invited on Major Assets**

Complete Catalog & Information Available at <https://perfection.global/barewire>



**PERFECTION  
Industrial Sales**

ph +1-847-545-6374 • fax +1-847-427-8884

[www.perfectionindustrial.com](http://www.perfectionindustrial.com)

In Conjunction With:



ph 401-943-3777

[www.commissionbrokers.com](http://www.commissionbrokers.com)