

(2) PHASE-ONLINE AUCTION & NEGOTIATED SALE

CATERPILLAR

Assets Surplus to the Ongoing
Operations of Caterpillar South Milwaukee



PFAUTER PE400 HSF CNC GEAR HOBBER – OFFERED VIA ONLINE AUCTION



VOEST-ALPINE WFL MILLTURN CNC TURNING CENTER –
OFFERED VIA ONLINE AUCTION

ONLINE AUCTION FEATURING: VOEST-ALPINE WFL Millturn
CNC Turning Center, OKUMA LC40 CNC Lathe, SNK RB-24
Bridge Type Vertical Machining Center, BLANCHARD
36" Rotary Grinder, & More



FARREL 25' CNC VERTICAL BORING MILL – OFFERED BY NEGOTIATED SALE

ONGOING NEGOTIATED SALE FEATURING:

SKODA W 150 CNC Floor Type
Horizontal Boring Mill, GIDDINGS &
LEWIS G60-T CNC Horizontal Boring
Mill, GRAY 6600 FQ CNC Floor Type
Horizontal Boring Mill, FARREL 25' CNC
Vertical Boring Mill, (2) MAAG SH-450
Gear Shapers, (2) MAAG SH-180/300
Gear Shapers, ROCKFORD 36" Slotter,
MIDWEST 72" Keyseater and 900KW
KOHLER/CUMMINS Generator



SKODA W150 CNC FLOOR TYPE HORIZONTAL
BORING MILL – OFFERED BY NEGOTIATED SALE

Sale Closing Date: Thursday, September 3, 2015 at 1:00 PM CDT

Sale Location: 1100 Milwaukee Avenue, South Milwaukee, Wisconsin 53172

Inspection: By Appointment Only



**PERFECTION
Industrial Sales**

Perfection Industrial Sales
ph 847-427-3333 • fax 847-427-8884
www.perfectionindustrial.com

Online Bidding at
www.perfectionindustrial.com



SNK RB-24 BRIDGE TYPE CNC VERTICAL MACHINING CENTER



OKUMA LC40 CNC LATHE



PFAUTER PE400 HSF CNC GEAR HOBBER

GEAR HOBBER

PFAUTER PE400 HSF CNC GEAR HOBBER, S/N 25502/574-1170, (1998), 25.6" Max. Swing Over Bed, 17.3" Max. Hobbing Dia., 157.5" Max. Stroke of Carriage Axial (Z-Axis), 187" Max. Length of Piece, 8.6" Max. Hob Dia., 80–340 RPM Workpiece Spindle Speed, 8.07" Bore Dia. of Workpiece Spindle, (2) Minimum Number of Teeth (Milling), (4) Minimum Number of Teeth (Hobbing), ±45 Degrees Head Swivel, 7.87" Hob Shift, Rebuilt and CNC Control Retrofit 1998, Fanuc 18iMB CNC Control, 29.5 HP Main Motor, Coolant System

Sale Closing Date:
Thursday, September 3,
2015 at 1:00 PM CDT

SLOTTER

ROCKFORD 36" SLOTTER, S/N 121-SL-69, 36" Stroke, 42" Rotary Table, 166" Max. Part Swing, 25–100 FPM Variable Cutting Speed, 40" Max. Workpiece Under Head, 83" Dia. Max. to Center of Table, 16" Vertical Ram Adjustment, 0–10 Degrees Ram Adjustment, 10,000 LB Max. Cutting Pressure, 36" Table Cross Travel, 42" Table Longitudinal Travel, Equipped w/Hardened Ways for Bed, Saddle and Arm, 20 HP AC Main Drive Motor for Hydraulics, Coolant System, Tool Lifter (Clapper Box), Ram Head Adaptor, Index Guide on Table

CNC LATHES

VOEST-ALPINE WFL M70 MILLTURN CNC TURNING CENTER, S/N 085.673/01, (1996), 35.8" Max. Swing Over Bed, 33.46" Max. Swing Over Cross Slide, 1600 RPM (2 Ranges) Main Spindle Speed, 84 HP Main Spindle Motor, 20 RPM Max. C-Axis Milling, A12 Main Spindle Motor, 7,500 LB Main Spindle Weight Capacity, 10–4,000 RPM Tool Spindle Speed, HSK-A-100 Tool Spindle Nose, 33.5 HP Tool Spindle Motor, 1-Position Turret w/ATC, 35.4" + 33.9" -1.57" X-Axis Travel, 19.7" Y-Axis Travel, 211.42" Z-Axis Travel, -105–+90 Degree B-Axis Travel, 15 M/M Rapid Traverse Rate X and Y, 30 ATC, 16.9" Steady Rest Opening Dia., Siemens Sinumerik 840 CNC Control, 15" 3 Jaw SMW Hydraulic Chuck, (2) Programmable Steady Rests, Tailstock, Coolant Thru Milling Head

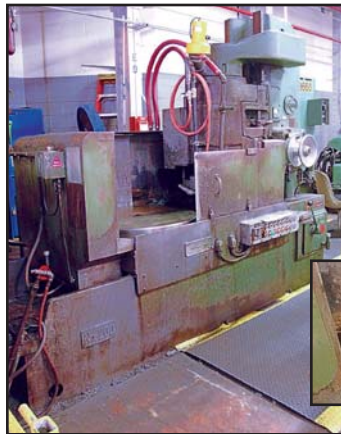
OKUMA LC40 4-AXIS CNC LATHE, S/N 6201-1377, (1998), 23.62" Max. Swing, 21.65" Max. Turning Dia., 29.52" Max. Work Length, 10–1,220 RPM Spindle Speeds, 50 HP Spindle Motor, 12-Position Upper Turret, 18-Position Lower Turret, Equipped w/Coolant System, Chip Conveyor, Drawbar

BRIDGE TYPE CNC VERTICAL MACHINING CENTER

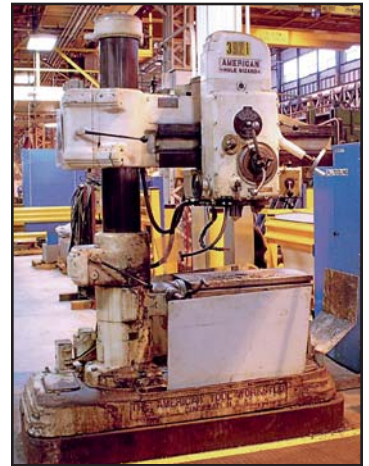
SNK RB-24 BRIDGE TYPE CNC VERTICAL MACHINING CENTER, S/N 9002888, (1993), 108" X-Axis Travel, 63" Y-Axis Travel, 35.4" Z-Axis Travel, 66" Distance Between Columns, 59"W x 98"L Table Size, 30 HP Spindle Motor, 30–2,000 RPM Spindle Speeds, Cat 50 Spindle Taper, Fanuc 0 MC Control



VOEST-ALPINE WFL MILLTURN CNC TURNING CENTER



<
BLANCHARD
20D-36 36
ROTARY
SURFACE GRINDER



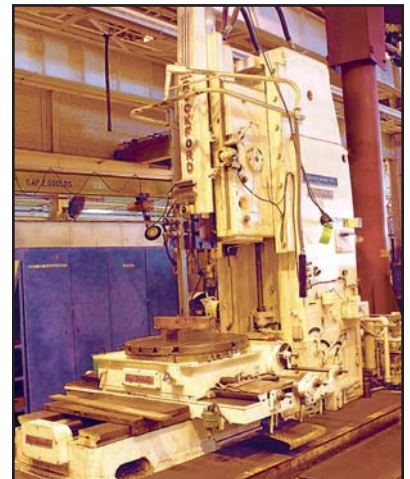
AMERICAN HOLE WIZARD
RADIAL ARM DRILL

RADIAL ARM DRILL

AMERICAN HOLE WIZARD
3' X 11" RADIAL ARM DRILL,
3' Arm, 11" Column Dia.,
14.75"–54.75" Distance
Between Spindle to Base,
12" Traverse of Spindle,
18" x 18" x 24" Plain Box Table,
50–1,500 RPM Spindle Speed,
12-Speed

ROTARY SURFACE GRINDER

BLANCHARD 20D-36 36" ROTARY SURFACE GRINDER, S/N 14476, (1975), 36" Magnetic Chuck Dia., 39" Max. Swing Inside Guards, 24" Vertical Range Over Chuck, 20" Segmented Dia. of Cylindrical Wheel, 720 RPM Wheel Speed, 6–33 RPM Chuck Speeds (6), .005"–.095" Vertical Feed Range, Equipped w/Neutrofler Control Station, Hardened Bed Ways, Coolant System, Trabon Lubrication System, Load Meter, Wheel Dresser, 30 HP AC Main Drive Motor, Hydromotion Unit



ROCKFORD 36" SLOTTER

ONGOING NEGOTIATED SALE

South Milwaukee Facility –
Large Capacity Machining & Gear Machinery



SKODA W150 CNC FLOOR TYPE HORIZONTAL BORING MILL



GRAY 6600 FQ CNC FLOOR TYPE HORIZONTAL BORING MILL



GIDDINGS & LEWIS G60-T CNC HORIZONTAL BORING MILL

HORIZONTAL BORING MILLS

SKODA W150 CNC FLOOR TYPE HORIZONTAL BORING MILL, S/N 24789, (1998), 5.9" Spindle Dia., #50 Spindle Taper w/Power Draw Bar, 39" Spindle (Z-Axis) Travel, 15" x 15" Quill Size, 31" Quill Travel (W-Axis), 2–2,300 RPM Spindle Speeds, 68 HP Spindle Drive Motor, 63" x 98" Table Size, 393" Column (X-Axis) Travel, 118" Headstock Vertical (Y-Axis) Travel, 0–472 IPM X-Axis Feed Range, 0–393 IPM Y-Axis Feed Range, 236 IPM W and Z-Axis Feed Range, Siemens 840D CNC Control, 50 Taper Right Angle Head, 19" Dia. Boring/Facing Head, Coolant System, Double-Pinion X-Axis Drive, Stainless Collapsing Way Covers, Chip Conveyor

GRAY 6600 FQ CNC FLOOR TYPE HORIZONTAL BORING MILL, S/N 10070, (1980), Rebuilt (1994), 6" Spindle Dia., #50 Spindle Taper w/Power Draw Bar, 4.5–1,200 RPM Spindle Speeds, 36" Spindle (Z-Axis) Travel, 15.75" Quill Size, 36" Quill Travel (W-Axis), 480" Column Travel (X-Axis), 96" Headstock Vertical Travel (Y-Axis), 0–180 IPM Feed Range, 48" (Approx.) Depth of Pit, Fanuc 18MA CNC Control, 50 Taper Right Angle Head, Coolant System, Chip Conveyor

GIDDINGS & LEWIS G60-T CNC HORIZONTAL BORING MILL, S/N 450-0131-82, 6" Spindle Dia., 168" X-Axis Travel, 96" Y-Axis Travel, 48" Z-Axis Travel, 74" W-Axis Travel, 6–1,120 RPM Spindle Speeds, Cat 50 Spindle Taper, 60" x 168" Table Size, 60,000 LB Table Capacity, .01–150 IPM X, Y, Z Feed Rate, 180 IPM X-Rapid Feed, 300 IPM Y-Rapid Feed, 200 IPM W and Z Feed, G & L 800C-M CNC Control, 60 ATC, 4th-Axis Capability, 3-Way Column, 40 HP Main Spindle Motor, Mist and Flood Coolant, Chip Conveyor, Probe

VERTICAL BORING MILL

FARREL 25' CNC VERTICAL BORING MILL, S/N 74R2040, (1975), 252" Max. Swing, 144" Max. Under Rail, (2) Rams, 13" x 13" Ram Size, 57.625" Ram Travel, 192" Table Dia., 200 Ton Table Capacity, .5–48 RPM Speeds, 100 HP Spindle Motor, 43.5" Min. Ram Centerlines, 7" Ram Travel Past Centerline, .001–999 IPR Ram and Saddle Feeds, Rebuilt and Retrofit in 1992, G & L 8000 B CNC Control, 192" Dia. Table, Spindle Chiller, Bellow Style Waycovers

GEAR SHAPERS

(2) MAAG SH-450 GEAR SHAPERS, S/N 7133 & 7131, 20.8" to 178.7" Work Dia., 26" Max. Face Width, 68.9" Work Table Dia., 23.6" Dia. x 51.2" Deep Work Table Bore Dia., .5 DP Max. Pitch w/Single Tooth Cutter, .875 DP Max/12.7 DP Min. Pitch w/Rack Cutter, 2.75" Min./2.75" Max. Ram Stroke, Infinite Helix Angle, 12 Min./1,000 Max. Number of Teeth, 11" Max. Cutter Length, 10.5–131 FPM Ram Speed Range, 77,000 LB Max. Weight on Work Table, 53.2" Max. Height on Work Piece, 22 HP Ram, Equipped w/Crowning Attachment, Misc. Change Gears

(2) MAAG SH-180/300 GEAR SHAPERS, S/N 5505 and 7587, 118.1" Max. Work Dia., 17" Max. Face Width, .625 DP Max. Pitch w/Single Tooth Cutter, 11" Max. Cutter Length, 17,000 LB Max. Weight on Work Table, 20 HP Ram, Equipped w/Crowning Attachment Capable, Misc. Change Gears, Plunge Cutting Capable, Tailstock, Chip Collection Pan, Swiveling Cutter Head, Spur Cutter Head, X-Axis DRO, Hardened and Ground Ways



MAAG SH-450 GEAR SHAPER

CATERPILLAR

Assets Surplus to the Ongoing
Operations of Caterpillar South Milwaukee

INSPECTION: Inspection will be held by appointment only.
To schedule an inspection appointment, please contact John Bopp
at (708) 606.3240 or via email at John@PerfectionIndustrial.com

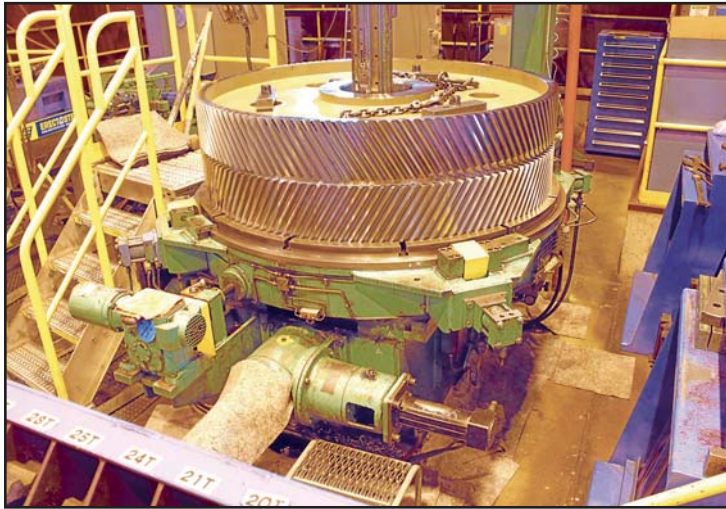
View our current auction schedule at
www.perfectionindustrial.com



MAAG SH-450 GEAR SHAPER

ONGOING NEGOTIATED SALE

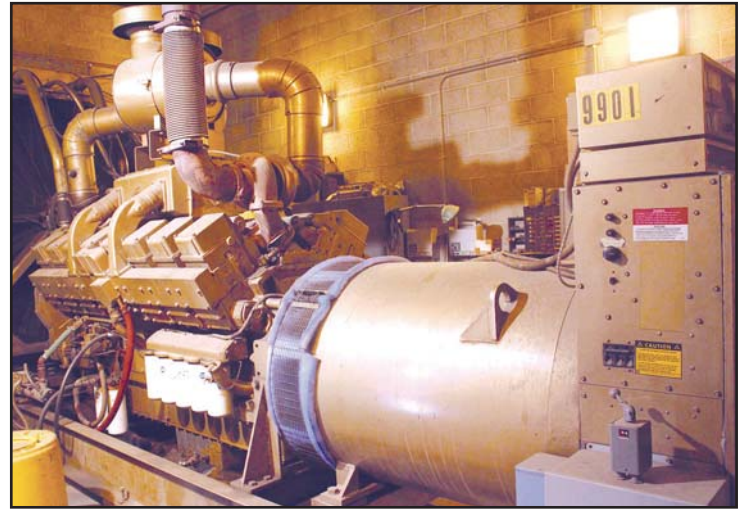
South Milwaukee Facility –
Large Capacity Machining & Gear Machinery



MIDWEST KEYSEATER

KEYSEATER

MIDWEST HD 72" KEYSEATER, S/N 197538, (1998), 38" Max. Keyway Length, 1.8125" Max. Depth Keyway, 2" Single/4.5" Multiple Max. Width Keyway, 280" Max. Swing, 10–60 SFPM Cutting Speed, 100 FPM Return Speed, .003"–.040" Infinite Variable Infeed, 40,000 LB Max. Weight on Table, Equipped w/40 HP Main Motor, Oilgear Pump, Allen Bradley PV900 PLC, (3) Support Guide Posts



KOHLER CUMMINS 900KW GENERATOR

GENERATOR

KOHLER/CUMMINS 900KW GENERATOR, S/N 11813-1, (1981), Cummins KTA-3067 Diesel Engine, 16-Cylinder, 8800 Engine Hours, (4) Kohler 1000R0Z71 Generators, 900KW Capacity

(2) PHASE-ONLINE AUCTION & NEGOTIATED SALE



Assets Surplus to the Ongoing
Operations of Caterpillar South Milwaukee

INSPECTION

Inspection will be held by appointment only. To schedule an inspection appointment, please contact John Bopp at (708) 606.3240 or via email at John@PerfectionIndustrial.com

REMOVAL

All items must be removed by Friday, September 18.

FOR FURTHER INFORMATION

For further information or questions, contact John Bopp at (708) 606.3240 or Email: John@PerfectionIndustrial.com

TERMS OF SALE

Payment: An 18% buyer's premium will be charged on all assets. The buyer's premium will be reduced to 15% for payments made by means of cash, cashier's check, company check (with bank letter of guarantee) or wire transfer within 48 hours of sale close. Credit card payments are limited to a maximum of \$2,000. All items are sold "As is, Where is" without any warranties expressed or implied.

ONLINE AUCTION FEATURING: VOEST-ALPINE WFL Millturn CNC Turning Center, OKUMA LC40 CNC Lathe, SNK RB-24 Bridge Type Vertical Machining Center, BLANCHARD 36" Rotary Grinder, & More

ONGOING NEGOTIATED SALE FEATURING: SKODA W 150 CNC Floor Type Horizontal Boring Mill, GIDDINGS & LEWIS G60-T CNC Horizontal Boring Mill, GRAY 6600 FQ CNC Floor Type Horizontal Boring Mill, FARREL 25' CNC Vertical Boring Mill, (2) MAAG SH-450 Gear Shapers, (2) MAAG SH-180/300 Gear Shapers, ROCKFORD 36" Slotter, MIDWEST 72" Keyseater and 900KW KOHLER/CUMMINS Generator

Sale Closing Date: Thursday, September 3, 2015 at 1:00 PM CDT

Sale Location: 1100 Milwaukee Avenue, South Milwaukee, Wisconsin 53172

Inspection: By Appointment Only



**PERFECTION
Industrial Sales**

Perfection Industrial Sales
ph 847-427-3333 • fax 847-427-8884
www.perfectionindustrial.com

Online Bidding at
www.perfectionindustrial.com