

# (2) PHASE-ONLINE AUCTION & NEGOTIATED SALE

## CATERPILLAR

Assets Surplus to the Ongoing  
Operations of Caterpillar South Milwaukee



PFAUTER PE400 HSF CNC GEAR HOBBER – OFFERED VIA ONLINE AUCTION



VOEST-ALPINE WFL MILLTURN CNC TURNING CENTER –  
OFFERED VIA ONLINE AUCTION

**ONLINE AUCTION FEATURING:** VOEST-ALPINE WFL Millturn  
CNC Turning Center, OKUMA LC40 CNC Lathe, SNK RB-24  
Bridge Type Vertical Machining Center, BLANCHARD  
36" Rotary Grinder, & More



FARREL 25' CNC VERTICAL BORING MILL – OFFERED BY NEGOTIATED SALE

### ONGOING NEGOTIATED SALE FEATURING:

SKODA W 150 CNC Floor Type  
Horizontal Boring Mill, GIDDINGS &  
LEWIS G60-T CNC Horizontal Boring  
Mill, GRAY 6600 FQ CNC Floor Type  
Horizontal Boring Mill, FARREL 25' CNC  
Vertical Boring Mill, (2) MAAG SH-450  
Gear Shapers, (2) MAAG SH-180/300  
Gear Shapers, ROCKFORD 36" Slotter,  
MIDWEST 72" Keyseater and 9MW  
KOHLER/CUMMINS Generator



SKODA W150 CNC FLOOR TYPE HORIZONTAL  
BORING MILL – OFFERED BY NEGOTIATED SALE

**Sale Closing Date:** Thursday, September 3, 2015 at 1:00 PM CDT

**Sale Location:** 1100 Milwaukee Avenue, South Milwaukee, Wisconsin 53172

**Inspection:** By Appointment Only



Perfection Industrial Sales  
ph 847-427-3333 • fax 847-427-8884  
[www.perfectionindustrial.com](http://www.perfectionindustrial.com)

Online Bidding at  
[www.perfectionindustrial.com](http://www.perfectionindustrial.com)





SNK RB-24 BRIDGE TYPE CNC VERTICAL MACHINING CENTER



OKUMA LC40 CNC LATHE



PFAUTER PE400 HSF CNC GEAR HOBBER

## GEAR HOBBER

**PFAUTER PE400 HSF CNC GEAR HOBBER**, S/N 25502/574-1170, (1998), 25.6" Max. Swing Over Bed, 17.3" Max. Hobbing Dia., 157.5" Max. Stroke of Carriage Axial (Z-Axis), 187" Max. Length of Piece, 8.6" Max. Hob Dia., 80–340 RPM Workpiece Spindle Speed, 8.07" Bore Dia. of Workpiece Spindle, (2) Minimum Number of Teeth (Milling), (4) Minimum Number of Teeth (Hobbing), ±45 Degrees Head Swivel, 7.87" Hob Shift, Rebuilt and CNC Control Retrofit 1998, Fanuc 18iMB CNC Control, 29.5 HP Main Motor, Coolant System

**Sale Closing Date:**  
**Thursday, September 3,**  
**2015 at 1:00 PM CDT**

## SLOTTER

**ROCKFORD 36" SLOTTER**, S/N 121-SL-69, 36" Stroke, 42" Rotary Table, 166" Max. Part Swing, 25–100 FPM Variable Cutting Speed, 40" Max. Workpiece Under Head, 83" Dia. Max. to Center of Table, 16" Vertical Ram Adjustment, 0–10 Degrees Ram Adjustment, 10,000 LB Max. Cutting Pressure, 36" Table Cross Travel, 42" Table Longitudinal Travel, Equipped w/Hardened Ways for Bed, Saddle and Arm, 20 HP AC Main Drive Motor for Hydraulics, Coolant System, Tool Lifter (Clapper Box), Ram Head Adaptor, Index Guide on Table

## CNC LATHES

**VOEST-ALPINE WFL M70 MILLTURN CNC TURNING CENTER**, S/N 085.673/01, (1996), 35.8" Max. Swing Over Bed, 33.46" Max. Swing Over Cross Slide, 1600 RPM (2 Ranges) Main Spindle Speed, 84 HP Main Spindle Motor, 20 RPM Max. C-Axis Milling, A12 Main Spindle Motor, 7,500 LB Main Spindle Weight Capacity, 10–4,000 RPM Tool Spindle Speed, HSK-A-100 Tool Spindle Nose, 33.5 HP Tool Spindle Motor, 1-Position Turret w/ATC, 35.4" + 33.9" -1.57" X-Axis Travel, 19.7" Y-Axis Travel, 211.42" Z-Axis Travel, -105–+90 Degree B-Axis Travel, 15 M/M Rapid Traverse Rate X and Y, 30 ATC, 16.9" Steady Rest Opening Dia., Siemens Sinumerik 840 CNC Control, 15" 3 Jaw SMW Hydraulic Chuck, (2) Programmable Steady Rests, Tailstock, Coolant Thru Milling Head

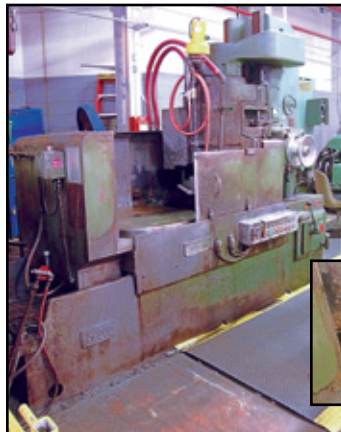
**OKUMA LC40 4-AXIS CNC LATHE**, S/N 6201-1377, (1998), 23.62" Max. Swing, 21.65" Max. Turning Dia., 29.52" Max. Work Length, 10–1,220 RPM Spindle Speeds, 50 HP Spindle Motor, 12-Position Upper Turret, 18-Position Lower Turret, Equipped w/Coolant System, Chip Conveyor, Drawbar

## BRIDGE TYPE CNC VERTICAL MACHINING CENTER

**SNK RB-24 BRIDGE TYPE CNC VERTICAL MACHINING CENTER**, S/N 9002888, (1993), 108" X-Axis Travel, 63" Y-Axis Travel, 35.4" Z-Axis Travel, 66" Distance Between Columns, 59"W x 98"L Table Size, 30 HP Spindle Motor, 30–2,000 RPM Spindle Speeds, Cat 50 Spindle Taper, Fanuc 0 MC Control



VOEST-ALPINE WFL MILLTURN CNC TURNING CENTER



<  
**BLANCHARD**  
**20D-36 36**  
**ROTARY**  
**SURFACE GRINDER**



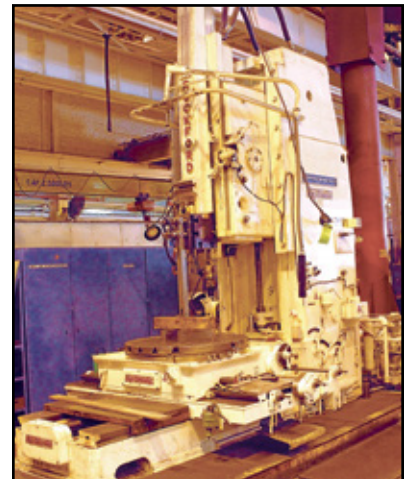
**AMERICAN HOLE WIZARD**  
**RADIAL ARM DRILL**

## RADIAL ARM DRILL

**AMERICAN HOLE WIZARD 3' X 11" RADIAL ARM DRILL**, 3' Arm, 11" Column Dia., 14.75"–54.75" Distance Between Spindle to Base, 12" Traverse of Spindle, 18" x 18" x 24" Plain Box Table, 50–1,500 RPM Spindle Speed, 12-Speed

## ROTARY SURFACE GRINDER

**BLANCHARD 20D-36 36" ROTARY SURFACE GRINDER**, S/N 14476, (1975), 36" Magnetic Chuck Dia., 39" Max. Swing Inside Guards, 24" Vertical Range Over Chuck, 20" Segmented Dia. of Cylindrical Wheel, 720 RPM Wheel Speed, 6–33 RPM Chuck Speeds (6), .005"–.095" Vertical Feed Range, Equipped w/Neutrofier Control Station, Hardened Bed Ways, Coolant System, Trabon Lubrication System, Load Meter, Wheel Dresser, 30 HP AC Main Drive Motor, Hydromotion Unit



**ROCKFORD 36" SLOTTER**



# ONGOING NEGOTIATED SALE

South Milwaukee Facility –  
Large Capacity Machining & Gear Machinery



SKODA W150 CNC FLOOR TYPE HORIZONTAL BORING MILL



GRAY 6600 FQ CNC FLOOR TYPE HORIZONTAL BORING MILL



GIDDINGS & LEWIS G60-T CNC HORIZONTAL BORING MILL



MAAG SH-450 GEAR SHAPER

## CATERPILLAR

Assets Surplus to the Ongoing  
Operations of Caterpillar South Milwaukee

**INSPECTION:** Inspection will be held by appointment only.  
To schedule an inspection appointment, please contact John Bopp  
at (708) 606.3240 or via email at John@PerfectionIndustrial.com

View our current auction schedule at  
[www.perfectionindustrial.com](http://www.perfectionindustrial.com)

### HORIZONTAL BORING MILLS

**SKODA W150 CNC FLOOR TYPE HORIZONTAL BORING MILL**, S/N 24789, (1998), 5.9" Spindle Dia., #50 Spindle Taper w/Power Draw Bar, 39" Spindle (Z-Axis) Travel, 15" x 15" Quill Size, 31" Quill Travel (W-Axis), 2–2,300 RPM Spindle Speeds, 68 HP Spindle Drive Motor, 63" x 98" Table Size, 393" Column (X-Axis) Travel, 118" Headstock Vertical (Y-Axis) Travel, 0–472 IPM X-Axis Feed Range, 0–393 IPM Y-Axis Feed Range, 236 IPM W and Z-Axis Feed Range, Siemens 840D CNC Control, 50 Taper Right Angle Head, 19" Dia. Boring/Facing Head, Coolant System, Double-Pinion X-Axis Drive, Stainless Collapsing Way Covers, Chip Conveyor

**GRAY 6600 FQ CNC FLOOR TYPE HORIZONTAL BORING MILL**, S/N 10070, (1980), Rebuilt (1994), 6" Spindle Dia., #50 Spindle Taper w/Power Draw Bar, 4.5–1,200 RPM Spindle Speeds, 36" Spindle (Z-Axis) Travel, 15.75" Quill Size, 36" Quill Travel (W-Axis), 480" Column Travel (X-Axis), 96" Headstock Vertical Travel (Y-Axis), 0–180 IPM Feed Range, 48" (Approx.) Depth of Pit, Fanuc 18MA CNC Control, 50 Taper Right Angle Head, Coolant System, Chip Conveyor

**GIDDINGS & LEWIS G60-T CNC HORIZONTAL BORING MILL**, S/N 450-0131-82, 6" Spindle Dia., 168" X-Axis Travel, 96" Y-Axis Travel, 48" Z-Axis Travel, 74" W-Axis Travel, 6–1,120 RPM Spindle Speeds, Cat 50 Spindle Taper, 60" x 168" Table Size, 60,000 LB Table Capacity, .01–150 IPM X, Y, Z Feed Rate, 180 IPM X-Rapid Feed, 300 IPM Y-Rapid Feed, 200 IPM W and Z Feed, G & L 8000-M CNC Control, 60 ATC, 4th-Axis Capability, 3-Way Column, 40 HP Main Spindle Motor, Mist and Flood Coolant, Chip Conveyor, Probe

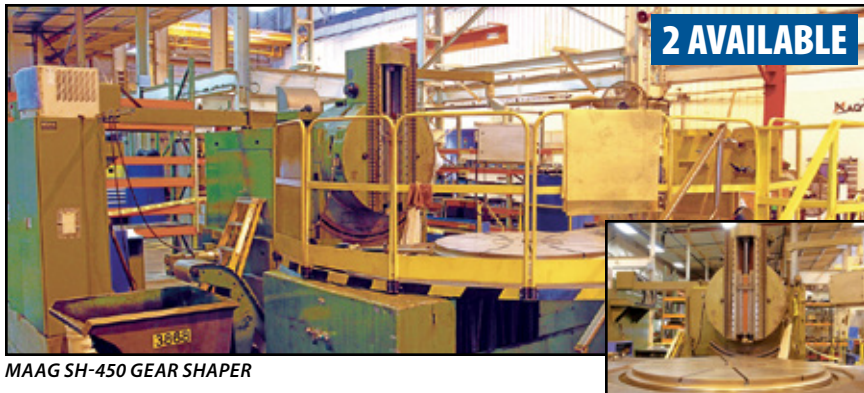
### VERTICAL BORING MILL

**FARREL 25' CNC VERTICAL BORING MILL**, S/N 74R2040, (1975), 252" Max. Swing, 144" Max. Under Rail, (2) Rams, 13" x 13" Ram Size, 57.625" Ram Travel, 192" Table Dia., 200 Ton Table Capacity, .5–48 RPM Speeds, 100 HP Spindle Motor, 43.5" Min. Ram Centerlines, 7" Ram Travel Past Centerline, .001–999 IPR Ram and Saddle Feeds, Rebuilt and Retrofitted in 1992, G & L 8000 B CNC Control, 192" Dia. Table, Spindle Chiller, Bellow Style Waycovers

### GEAR SHAPERS

**(2) MAAG SH-450 GEAR SHAPERS**, S/N 7133 & 7131, 20.8" to 178.7" Work Dia., 26" Max. Face Width, 68.9" Work Table Dia., 23.6" Dia. x 51.2" Deep Work Table Bore Dia., .5 DP Max. Pitch w/Single Tooth Cutter, .875 DP Max/12.7 DP Min. Pitch w/Rack Cutter, 2.75" Min./2.75" Max. Ram Stroke, Infinite Helix Angle, 12 Min./1,000 Max. Number of Teeth, 11" Max. Cutter Length, 10.5–131 FPM Ram Speed Range, 77,000 LB Max. Weight on Work Table, 53.2" Max. Height on Work Piece, 22 HP Ram, Equipped w/Crowning Attachment, Misc. Change Gears

**(2) MAAG SH-180/300 GEAR SHAPERS**, S/N 5505 and 7587, 118.1" Max. Work Dia., 17" Max. Face Width, .625 DP Max. Pitch w/Single Tooth Cutter, 11" Max. Cutter Length, 17,000 LB Max. Weight on Work Table, 20 HP Ram, Equipped w/Crowning Attachment Capable, Misc. Change Gears, Plunge Cutting Capable, Tailstock, Chip Collection Pan, Swiveling Cutter Head, Spur Cutter Head, X-Axis DRO, Hardened and Ground Ways

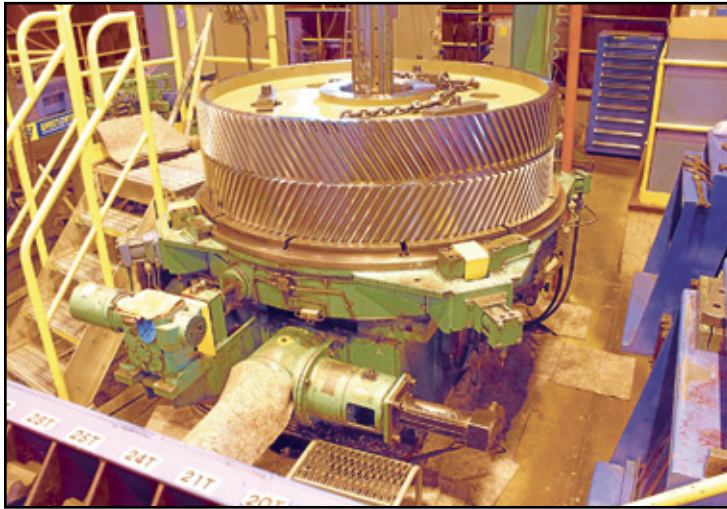


MAAG SH-450 GEAR SHAPER



# ONGOING NEGOTIATED SALE

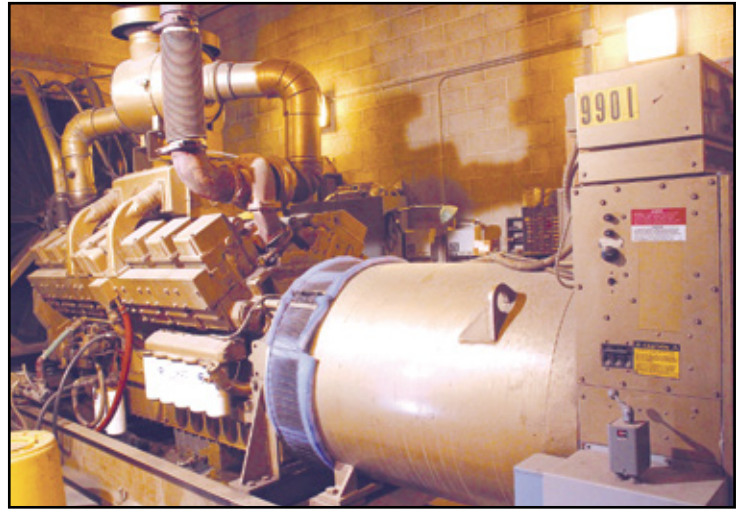
South Milwaukee Facility –  
Large Capacity Machining & Gear Machinery



MIDWEST KEYSEATER

## KEYSEATER

**MIDWEST HD 72" KEYSEATER**, S/N 197538, (1998), 38" Max. Keyway Length, 1.8125" Max. Depth Keyway, 2" Single/4.5" Multiple Max. Width Keyway, 280" Max. Swing, 10–60 SFPM Cutting Speed, 100 FPM Return Speed, .003"–.040" Infinite Variable Infeed, 40,000 LB Max. Weight on Table, Equipped w/40 HP Main Motor, Oilgear Pump, Allen Bradley PV900 PLC, (3) Support Guide Posts



KOHLER CUMMINS 9MW GENERATOR

## GENERATOR

**KOHLER/CUMMINS 9MW GENERATOR**, S/N 11813-1, (1981), Cummins KTA-3067 Diesel Engine, 16-Cylinder, 8800 Engine Hours, (4) Kohler 1000R0Z71 Generators, 9MW Capacity

## (2) PHASE-ONLINE AUCTION & NEGOTIATED SALE



Assets Surplus to the Ongoing  
Operations of Caterpillar South Milwaukee

### INSPECTION

Inspection will be held by appointment only. To schedule an inspection appointment, please contact John Bopp at (708) 606.3240 or via email at [John@PerfectionIndustrial.com](mailto:John@PerfectionIndustrial.com)

### REMOVAL

All items must be removed by Friday, September 18.

### FOR FURTHER INFORMATION

For further information or questions, contact John Bopp at (708) 606.3240 or Email: [John@PerfectionIndustrial.com](mailto:John@PerfectionIndustrial.com)

### TERMS OF SALE

**Payment:** An 18% buyer's premium will be charged on all assets. The buyer's premium will be reduced to 15% for payments made by means of cash, cashier's check, company check (with bank letter of guarantee) or wire transfer within 48 hours of sale close. Credit card payments are limited to a maximum of \$2,000. All items are sold "As is, Where is" without any warranties expressed or implied.

**ONLINE AUCTION FEATURING: VOEST-ALPINE WFL Millturn CNC Turning Center, OKUMA LC40 CNC Lathe, SNK RB-24 Bridge Type Vertical Machining Center, BLANCHARD 36" Rotary Grinder, & More**

**ONGOING NEGOTIATED SALE FEATURING: SKODA W 150 CNC Floor Type Horizontal Boring Mill, GIDDINGS & LEWIS G60-T CNC Horizontal Boring Mill, GRAY 6600 FQ CNC Floor Type Horizontal Boring Mill, FARREL 25' CNC Vertical Boring Mill, (2) MAAG SH-450 Gear Shapers, (2) MAAG SH-180/300 Gear Shapers, ROCKFORD 36" Slotter, MIDWEST 72" Keyseater and 9MW KOHLER/CUMMINS Generator**

**Sale Closing Date: Thursday, September 3, 2015 at 1:00 PM CDT**

**Sale Location: 1100 Milwaukee Avenue, South Milwaukee, Wisconsin 53172**

**Inspection: By Appointment Only**



**PERFECTION  
Industrial Sales**

Perfection Industrial Sales  
ph 847-427-3333 • fax 847-427-8884  
[www.perfectionindustrial.com](http://www.perfectionindustrial.com)

Online Bidding at  
[www.perfectionindustrial.com](http://www.perfectionindustrial.com)