



(2) MAZAK MEGATURN A12N MILLICENTER VERTICAL TURNING LATHES

**Featuring: CNC Gear Shapers
& Machine Tools, Fabrication, Tool Room,
Welding, Rolling Stock, Bridge & Jib Cranes
& Much More**

Surplus to the Ongoing Operations of

CATERPILLAR AURORA



LVD BH20 1,100-TON CNC HYDRAULIC BRAKE



mitsubishi SA63 CNC GEAR SHAPERS

Sale Closing From: Tuesday, July 12, 2016 at 11:00 AM CDT

Location: 325 State Route 31, Montgomery, Illinois 60538

Inspection: Monday, July 11, from 9:00 AM to 4:00 PM CDT

MITSUBISHI FREE-FLOWING MACHINING SYSTEM, CNC LATHES, CNC VERTICAL TURNING LATHES, CNC HYDRAULIC PRESS BRAKES, CNC FLAME CUTTING, TOOL PRESETTERS, LATHES



MITSUBISHI M-V60C CNC VERTICAL MACHINING CENTERS



MITSUBISHI H-50C CNC HORIZONTAL MACHINING CENTER



LVD BH20 1,100-TON CNC HYDRAULIC BRAKE

CNC HYDRAULIC PRESS BRAKES

1988 LVD BH20 1,100-TON CNC HYDRAULIC BRAKE, s/n 14271, 20' x 31" Bed Size, 20' Ram Length, 16'8" Distance Between Housings, 15" Throat Depth, 28" Stroke, 41" Max. Daylight, LVD MNC CNC w/2005 3.01 Version, (4) Axis Back Gauge, Work Support, Palm Button Station, Foot Pedal, Adjustable Bolster Plate, Adjustable Die Available, Crowning

88-TON TOYOKOKI APB-8030W 6-AXIS CNC PRESS BRAKE, s/n 1179, 98.4" Bending Length, 11.4" Open Height, 5.9" Stroke Height, 9.8" Frame Gap, 6-Axis TNC-ACII CNC Control, 4-Axis Backgauge (Location: Torreon, MX)



TSD MICROBORE EGS2550-001 TOOL PRESETTER



AMERICAN PACEMAKER 16" X 78" ENGINE LATHE



AMERICAN 27" X 42" ENGINE LATHE

MITSUBISHI FREE-FLOWING MACHINING SYSTEM INCLUDING

(2) MITSUBISHI SA63 CNC GEAR SHAPERS, s/n SA63067-C5 and Unknown, Fanuc 11M CNC Controls, 39.37" Max. External Gear Diameter, 7.87" Max. Gear Tooth Width, 4.72" Cutter Spindle Diameter, 9.05" Max. Cutter Stroke Length, 30-300 Cutter Strokes Per Minute, 38.13" Table Diameter, 15.78" Table Center Hole Diameter, (12) Max. Work Module, 2.116 Max. Diametral Pitch, 20 ATC

(3) MITSUBISHI M-V60C CNC VERTICAL MACHINING CENTERS, s/n CV5175, CV5119, and CV5120, Mitsubishi CNC Control, 60 ATC, 55" x 23" Table, 7,000 Lb Table Capacity, 39.4" X, 23.6" Y, 21.7" Z, 591 IPM X and Y Rapid Traverse, 473" IPM Z Rapid Traverse, 60 ATC

MITSUBISHI M-V60EN CNC VERTICAL MACHINING CENTER, s/n CV5175, Mitsubishi Meldas CNC Control, 39.37" X, 23.62" Y, 21.65" Z, 19.7" x 19.7" Pallet Size, 55" x 20" Table, 4,409 Lb Max. Table Load, 591 X and Y IPM Feed Rate, 473 Z IPM Feed Rate, 6,000 RPM Max. Spindle Speed, Cat 50 Spindle Taper, Pallet Changer

MITSUBISHI H-50C CNC HORIZONTAL MACHINING CENTER, s/n CH2232, Mitsubishi Meldas CNC Control, (2) 19.7" x 19.7" Pallets, 1,320 Lb Table Capacity, 27.9" X, 24.8" Y, 23.6" Z, 30 ATC, 60-6,000 RPM Spindle Speed, Cat 50 1,181 IPM Rapid Traverse

MITSUBISHI 500FFMS SHUTTLE CONVEYOR, s/n 15

MITSUBISHI WASH/RINSE BOOTH SYSTEM

CNC LATHES

MAZAK IVS-200 CNC LATHE, s/n 176202, 11" Swing, 7" Max. Diameter, 4" Max. Length, 8" Chuck, 7,000 RPM, 34.62" X, 11" Z, Mazatrol 640TN CNC Control

(2) MAZAK IVS-200 CNC INVERTED SPINDLE VERTICAL LATHES, s/n 171023 and 170841, 12.6" Max. Swing, 8" and 10" Chucks, 47" Between Spindles, 10" Standard Machining Diameter x 12.6" Max., 21.32" Max. Length, 2" Bar Capacity, 5,000 RPM, 9" X, Mazatrol 640T CNC Control, GL 100F Gantry Load System

CNC VERTICAL TURNING LATHES

MOTCH 125 VNC CNC VERTICAL TURNING LATHE, s/n VT-29817201, Cincinnati Acramatic A2100 CNC Control, 24" Chuck, 25" Swing, 14" X, 18" Z, 240-2,410 RPM Spindle Speeds w/Torrit DMC-D1 Collection Unit

(2) MAZAK MEGATURN A12N MILLICENTER VERTICAL TURNING LATHES, s/n 102884 and 102885, 53" Max. Turning Diameter, 40" Max. Turning Height, 30 ATC, Pallet Changer, Dual 49" Diameter Pallets, .001 Degree Table Indexing

MOTCH 219D CNC LATHE, s/n VT-2939791, 18" Chuck, 25" Max. Swing, 2,800 RPM, A2-11 Spindle, 50 HP, Fanuc 5T CNC Control



MESSER TMC-4522 CNC FLAME CUTTING SYSTEM



MAZAK IVS-200 CNC VERTICAL LATHE

CNC FLAME CUTTING

MESSER TMC-4522 CNC FLAME CUTTING SYSTEM, s/n TMC4520014102, 23.3' x 50.5' Table, 1.25" Max. Thickness, .1-1.25" Cutting Thickness Range, 54.6" IPM, Messer Explorer Pentium Control

ALSO AVAILABLE: LARGE SELECTION OF CAT 50 TOOLING, MILLING, BORING, TAPPING, AND CUTTING TOOLING

TOOL PRESETTERS

TSD MICROBORE EGS2550-001 TOOL PRESETTER, s/n 71-11-284

ZOLLER TOOL PRESETTER, s/n V420E1-00187

LATHES

AMERICAN PACEMAKER 16" X 78" ENGINE LATHE, 17-1,000 RPM, 15" 4-Jaw Chuck, Tool Post

AMERICAN 27" X 42" ENGINE LATHE, 24" 4-Jaw Chuck, 19-280 RPM

LANDIS 18" X 24" ENGINE LATHE, s/n 16CL1C-41, 11" 4-Jaw Chuck

View our current auction schedule at www.perfectionindustrial.com

To discuss your requirements for an auction, please call Perfection Industrial **847-545-6374**

VERTICAL BANDSAWS, HORIZONTAL BANDSAWS, TOOL ROOM



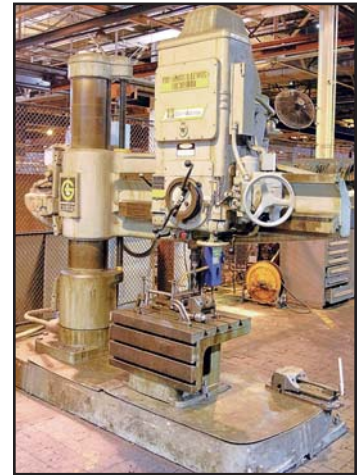
MARVEL SERIES 81 VERTICAL BANDSAWS



DOALL CONTOUR-MATIC 26 VERTICAL BANDSAW



PEERLESS CHAMP-13SAII HORIZONTAL BANDSAW



GIDDINGS & LEWIS-BICKFORD CHIPMASTER RADIAL ARM DRILL



MARVEL 15A4/M1/S 15" X 24" HORIZONTAL BANDSAW



WILTON 7020 10" X 16" HORIZONTAL BANDSAW



DOALL C-4 12" X 9" HORIZONTAL BANDSAW

VERTICAL BANDSAWS

(2) MARVEL SERIES 81 VERTICAL BANDSAWS, s/n D-307288 and F-301288, 18" x 20" Capacity 14'6" x 1-1/4" x .042" Blade Size, 30" x 27" Working Surface of Table, 21-1/2" Max. Vise Opening, 60-400 FPM Blade Speed,

DOALL CONTOUR-MATIC 26 VERTICAL BANDSAW, s/n 55-58538, 10,800 Max. FPM, 41" x 32" Table, 25" Throat, DBW-10 Blade Welder

ROCKWELL DELTA 28-350 VERTICAL BANDSAW, s/n 1451285, 24" x 20" Table, 20" Throat

HORIZONTAL BANDSAWS

MARVEL 15A4/M1/S 15" X 24" HORIZONTAL BANDSAW, s/n E-15903

PEERLESS CHAMP-13SAII 11" X 19" HORIZONTAL BANDSAW, s/n S11961284

WILTON 7020 10" X 16" HORIZONTAL BANDSAW, s/n 06010009

DOALL C-4 12" X 9" HORIZONTAL BANDSAW, s/n 234-752889

PEERLESS MECHANIC-CUT 11" X 11" HORIZONTAL BANDSAW, s/n AMII-1389-B-68

JET HVBS-7M 7" X 12" HORIZONTAL/VERTICAL BANDSAW, s/n 103737

TOOL ROOM

GIDDINGS & LEWIS-BICKFORD CHIPMASTER RADIAL ARM DRILL, s/n 953-00245-75, 12" Diameter Column x 5' Arm, Box Type Table

SOLBERGA SE725SL DUAL-HEAD DRILL PRESS, s/n 2621, 1,440 Max. RPM Spindle Speed

AVEY MA6 DRILLING MACHINE, s/n MA1624, Size 2, 225-1,350 RPM Spindle Speed

CINCINNATI 18 ROYAL DRILL PRESS, 325-3,205 RPM Spindle Speed

SETCO CADET SPL DUAL-END GRINDER

5-TON HANNIFIN T-7036 C-FRAME SHOP PRESS, s/n T7036, 20" x 18" Bed Area, 8" Diameter Bed Plate, 2,040 PSI Max.

25-TON POWERTEAM HYDRAULIC H-FRAME SHOP PRESS

5,000 PSIG H-FRAME SHOP PRESS, 27" x 49" Bed, 11" x 49.5" Between Posts

DAKE #4 ARBOR PRESS

WHITNEY JENSEN 412' SHEAR, s/n 244-963, 4' x 12 Ga Capacity

ROCKWELL 15-120 RAM-TYPE RADIAL DRILL, s/n 1440063, 8,200 Max. RPM

ROCKWELL 17-60 DRILL PRESS, s/n 1456858

(2) RIDGID 300 PIPE THREADERS



H-FRAME SHOP PRESS



DAKE #4 ARBOR PRESS



RIDGID 300 PIPE THREADERS

To discuss your requirements for an auction, please call
Perfection Industrial 847-545-6374

Online Bidding at www.perfectionindustrial.com

View our current auction schedule at www.perfectionindustrial.com

GRINDING, DUST COLLECTION SYSTEMS, WELDING & PLASMA CUTTING, ROLLING STOCK

GRINDING

GALLMEYER & LIVINGSTONE 550 SURFACE GRINDER, s/n 550128, 12" x 36" Magnetic Chuck

NORTON 11" X 15" SURFACE GRINDER

6" BELT X 12" DISC COMBINATION GRINDER

(3) HAMMOND ND-12A NO DUST DUAL-END GRINDERS

DUST COLLECTION SYSTEMS

2008 UNITED AIR SPECIALISTS SFC2-2 DUST COLLECTION SYSTEM, s/n 60062783

(2) UNITED AIR SPECIALISTS SFC-2-1-DD DUST COLLECTION SYSTEMS, s/n 60062820 and 33-10089-1

WELDING & PLASMA CUTTING

(2) LINCOLN IDEAL ARC DC-600 MIG WELDERS

(2) LINCOLN CV-655 MIG WELDERS

(2) LINCOLN IDEALARC R3R-300 ARC WELDERS

LINCOLN IDEALARC 500/500 WELDING POWER SOURCE

LINCOLN POWERWAVE 455 ADVANCE PROCESS WELDER

LINCOLN DC-600 MULTI-PROCESS WELDER

(2) LINCOLN PRO-CUT 125 PLASMA POWER SOURCES

HYPERTHERM MAX. 100 PLASMA POWER SOURCE



UNITED AIR SPECIALISTS SFC-2-1-DD
DUST COLLECTION SYSTEMS

2 AVAILABLE



UNITED AIR SPECIALISTS
SFC2-2
DUST COLLECTION SYSTEM

2008

ALSO AVAILABLE: WELDING GUNS, TORCH WANDS, PALLETS OF NEW IN BOX WELDING WIRE SPOOLS AND MUCH MORE

ROLLING STOCK

(2) 15,000 LB CATERPILLAR T150D LP FORKLIFTS, s/n 5MB00904 and 5MB00907

10,000 LB CATERPILLAR GP45K1 LP FORKLIFT, s/n AT29C80324

8,000 LB CATERPILLAR GP40K LP FORKLIFT, s/n AT29C20324

6,000 LB COMBILIFT CL60060LA48 SIDE LOADER, s/n 6868

(2) 4,500 LB CATERPILLAR NR4500 STAND-UP ELECTRIC FORKLIFTS, s/n 7NR3837907 and 7NR3643707

(3) 4,000 LB CATERPILLAR NR4000 STAND-UP ELECTRIC FORKLIFTS, s/n 5NR2735715, 5NR2739714 and 5NR2738716

ALSO AVAILABLE: CLUB CART GOLF CARTS, CUSHMAN UTILITY CARTS AND MORE



GALLMEYER & LIVINGSTONE 550 SURFACE GRINDER



VIEW OF PLASMAS POWER SOURCES



VIEW OF COMBILIFTS



< VIEW OF WELDERS



> VIEW OF
WELDING WIRE



SCISSOR LIFT AND CUSHMAN CARTS



CATERPILLAR LP FORKLIFTS



CATERPILLAR STAND-UP ELECTRIC FORKLIFTS

View our current auction schedule at www.perfectionindustrial.com

CRANES – BRIDGE & JIB

CRANES – BRIDGE & JIB

- 30-TON P & H DUAL-HOIST BRIDGE CRANE**, s/n C20831, 30-Ton Main Hoist w/5-Ton Auxiliary Hoist, Approx. 75' Span
- 20-TON ILLINOIS CRANE DUAL-HOIST BRIDGE CRANE**, s/n 810727, Approx. 75' Span, 20-Ton Main Hoist w/5-Ton Auxiliary Hoist
- 20-TON P & H BRIDGE CRANE**, s/n CB-31202 MC, Crane No. HC-00031, Approx. 100' Span
- 20-TON ILLINOIS GANTRY-TYPE BRIDGE CRANE**, s/n A9097, Approx. 200' Set of Rail, 14' x 17'7" Crane Dimensions
- (3) 15-TON P & H DUAL-HOIST BRIDGE CRANES**, 15-Ton Main Hoist, 5-Ton Auxiliary Hoist
- 10-TON ILLINOIS CRANE BRIDGE CRANE**, s/n 120004, Approx. 36' Span, 150' Runway
- 10-TON P & H BRIDGE CRANE**, s/n CB32809FC, Approx. 75' Span, P & H Electric Hoists

- 10-TON ABELL-HOWE BRIDGE CRANE**, Approx. 50' Span
- 5-TON P & H BRIDGE CRANE**, Approx. 47' Span x 90' Runway
- 4-TON ILLINOIS CRANE BRIDGE CRANE**, Approx. 40' Span x 100' Runway
- 3-TON P & H BRIDGE CRANE**, 36' Span x 100' Runway
- 1-TON GORBEL FREE-STANDING BRIDGE CRANE**, 20' Span x 45' Runway, 15' Overall Height, 12' Under Hook, w/1-Ton Coffing Electric Hoist
- (2) QUAD BRIDGE OVERHEAD CRANE SYSTEMS**, w/(4) Cleveland TramRail Bridges and (4) P & H Electric Hoists, Approx. 100' Runway
- TRIPLE BRIDGE OVERHEAD CRANE SYSTEM**, w/2-, 3-, and 4-Ton Bridges and P & H Electric Hoists
- OVER 50 ADDITIONAL BRIDGE CRANES INCLUDING DOUBLE GIRDER, UNDERSLUNG, TOP RUNNING CRANES AND MULTI-BRIDGE**
- OVER 150 P & H, ILLINOIS CRANE, AND ABELL-HOWE SWIVEL JIB CRANES FROM 500 LB TO 4-TON**



20-TON P & H BRIDGE CRANE



15-TON P & H DUAL-HOIST BRIDGE CRANE



10-TON P & H BRIDGE CRANE



< 20-TON ILLINOIS GANTRY-TYPE BRIDGE CRANE



> (OVER 100) JIB CRANES

View our current auction schedule at www.perfectionindustrial.com

Online Bidding at www.perfectionindustrial.com



GORBEL FREE-STANDING CRANE SYSTEMS



(OVER 100) JIB CRANES



(OVER 50) MULTI-BRIDGE OVERHEAD CRANES



MANIPULATORS & LIFTING MAGNETS, BALERS, TRANSFORMERS, HYDRAULIC JACK & POWER PACKS & MORE



(10) DALMEC, GCI AND (6) SIGMA INDUSTRIAL MANIPULATORS



PTR BALERS



VIEW OF TRANSFORMERS

MANIPULATORS & LIFTING MAGNETS
(OVER 10) DALMEC, GCI AND (6) SIGMA INDUSTRIAL MANIPULATORS

(OVER 15) WALKER AND PERMADUR LIFTING MAGNETS, up to 5,500 Lb

BALERS
(2) 2010 PTR 3400 HD BALERS, s/n 104099 and 104095

TRANSFORMERS
(2) 175 KVA REX POWER MAGNETICS ISOLATION TRANSFORMERS
93 KVA AJAX AA TRANSFORMER

HYDRAULIC JACKS & POWER PACKS
10,000 PSI ENERPAC PEM3035 HYDRAULIC PUMP
10,000 PSI ENERPAC RRH603 HYDRAULIC PUMP
10,000 PSI POWERTEAM F HYDRAULIC JACK

JOHNS STRUCTURE JACKING SYSTEMS PE214D HYDRAULIC JACK

(4) 17-TON ENERPAC SAF-T-LITE JTA-176 JACKS

(4) 15-TON SIMPLEX JACKS

(2) 15-TON ENERPAC SAF-T-LITE JHA-156 JACKS

(3) 10,000 PSI ENERPAC P392FP JACKS

(10) POWERTEAM, ENERPAC, AND RAM-PAC HYDRAULIC CYLINDER JACKS AND PUMPS

ALSO AVAILABLE: (OVER 40) VIDMAR/LISTA BALL BEARING TOOL CABINETS, LARGE ASSORTMENT OF HAND TOOLS, PNEUMATIC TOOLS, ROLLING STOCK CARTS, WORK TABLES AND BENCHES, FILE CABINETS, A/V EQUIPMENT, AIR, HOSE AND GAS REELS, SHOP FANS, LOCKERS, AND MUCH MORE



BALL BEARING TOOL CABINETS



GCI WORK PLATFORMS



< HYDRAULIC JACKS AND PUMPS



> FLAMMABLE LIQUIDS CABINETS



ASSORTED SIZES OF PALLET RACKING



View our current auction schedule at www.perfectionindustrial.com

Online Bidding at www.perfectionindustrial.com



VIEW OF AIR TOOLS



VIEW OF REELS



VICES



VIEW OF TOOLING



LARGE ASSORTMENT OF HARDWARE CUBBIES, FOREMAN'S DESKS, AND LOCKER



VIEW OF STEEL WELDING TABLES

Sale Closing From: Tuesday, July 12, 2016 at 11:00 AM CDT
Location: 325 State Route 31, Montgomery, Illinois 60538
Inspection: Monday, July 11, from 9:00 AM to 4:00 PM CDT

TERMS OF SALE
An 18% buyer's premium will be charged on all assets. The buyer's premium will be reduced to 16% for payments made by means of cash, cashier's check, company check (with bank letter of guarantee) or wire transfer within 48 hours of sale close. Credit card payments are limited to a maximum of \$2,000. All items are sold "As is, Where is" without any warranty expressed or implied.

REMOVAL
All purchased lots must be removed no later than Friday, July 22. Removal hours are Monday through Friday, from 8:00 AM to 4:00 PM CDT.
FOR FURTHER INFORMATION
For further information contact Jennifer Reiner at (847) 545-6374 or jennifer@perfectionindustrial.com. For accounting and invoicing questions, contact Inesa Dicipetris at (847) 427-3333 or inesa@perfectionindustrial.com.

To discuss your requirements for an auction, please call Perfection Industrial 847-545-6374