

LIVE WEBCAST ^{ONLINE ONLY} AUCTION

CLOSURE OF



**ANIMATED
MANUFACTURING CO.**

A Metal Stamping and Tool & Die Facility

SALE DATE

Tuesday, September 19, at 10 AM CT

SALE LOCATION

106 W. 154th St., South Holland, IL 60473

INSPECTION

Monday, September 18, from 9 AM to 4 PM CT, by appointment only

**PRE-AUCTION
OFFERS INVITED
ON MAJOR ASSETS**

COMPLETE CATALOG & INFORMATION:

<https://perfection.global/animatedmfg>

FEATURING: NIAGARA SE2-300-84-48UH SSDC Press, KOMATSU OBS 45-2 Gap Frame Press, (3) CLEARING-NIAGARA BN-110-11 Gap Frame Presses, (7) CLEARING & MINSTER OBI Presses, MECON 100CCS24 10,000 Lb Cradle Straightener, (4) NILSON Four Slide Machines, 2019 GARDNER DENVER LRS55-75F Air Compressor, 2019 MIKROPOR MKUS-550 Air Dryer, 5 Ton Bridge Crane & Support Equipment



NIAGARA SE2-300-84-48-UH SS PRESS



NILSON FOUR SLIDE



**PERFECTION
Industrial Sales**

Perfection Industrial Sales IL Firm Lic. #444.000438, Steve Kleba IL Auctioneer Lic. #441.001778

Perfection Industrial Sales

ph +1-847-545-6374 • fax +1-847-427-8884

www.perfectionindustrial.com

In conjunction with:

ki
auCTIONS
A Division of Kempler Industries

(2) STRAIGHT SIDE PRESS, (11) GAP FRAME PRESSES

(2) STRAIGHT SIDE PRESS

NIAGARA SE2-300-84-48-UH 330 TON STRAIGHT SIDE DOUBLE CRANK PRESS, s/n P53554, w/ 84" x 48" Bed, 35-70 SPM, 8" Stroke, 11" Adjustment, 32" Shut Height, 32" x 20" Windows, OmniLink Control, Link System 1100 Tonnage Monitor, Link-Logic 3000 System Monitor

HEIM S175-42 X 78 175 TON STRAIGHT SIDE DOUBLE CRANK PRESS, s/n NA, w/ 78" x 42" Bed

(11) GAP FRAME PRESSES

USI CLEARING 200-P-701 200 TON OBI PRESS, s/n 54-2301, w/ 54" x 35" Bed, 40 SPM, 8" Stroke, 5" Adjustment, 22.25" Shut Height, OmniLink LCD Control

USI CLEARING 150-P-701 150 TON OBI PRESS, s/n 54-5216, w/ 50" x 33" Bed, 45 SPM, 8" Stroke, 5" Adjustment, 19.5" Shut Height

(3) CLEARING-NIAGARA BN-110-II 120 TON GAP FRAME PRESSES, s/n P54375, P54592, P54598, w/ 42" x 27" Bed, 60-120 SPM, 4.5" Stroke, 22.25" Shut Height, OmniLink LCD Control, LINK Blackmax Safety Curtain

FEDERAL NO. 8 100 TON OBI PRESS, s/n 8-296, w/ 36" x 28" Bed, 45 SPM, 6" Stroke, 3" Ram Adjustment, Link System 2500 Programmable Limit Switch, LINK Blackmax Safety Curtain

USI CLEARING 75P 701 75 TON OBI PRESS, s/n 54-7210, w/ 36" x 24" Bolster, 50 SPM, 6" Stroke, 3" Slide Adjustment, 17.75" Shut Height, Link-Logic 3000 System Monitor

USI CLEARING TORC-PAC 60 60 TON OBI PRESS, s/n 57-9233, w/ 32" x 21" Bolster, 45-90 SPM, 6" Stroke, 3" Slide Adjustment, 15.25" Shut Height, Cushion Capacity: .75 Tons @ 10PSI, Link-Logic 3000 System Monitor

USI CLEARING TORC-PAC 60 60 TON OBI PRESS, s/n 57-9232, w/ 32" x 21" Bolster, 90 SPM, 4" Stroke, 3" Slide Adjustment, 13.25" Shut Height, Link-Logic 3000 System Monitor

KOMATSU OBS 45-2 45 TON GAP FRAME PRESS, s/n 12300, w/ 56" x 18" Bolster, 80 SPM, 3.9" Stroke, 2.36" Slide Adjustment

MINSTER NO. 4 32 TON OBI PUNCH PRESS, s/n 4-18798, w/ 24" x 15" Bed, 100-200 SPM, 2.25" Slide Adjustment



HEIM S175-42 X 78 SS PRESS



NIAGARA SE2-300-84-48-UH SS PRESS



CLEARING-NIAGARA 120 TON GAP FRAME PRESS



CLEARING-NIAGARA 120 TON GAP FRAME PRESS



USI CLEARING 200-P-701 OBI PRESS



USI CLEARING 150-P-701 OBI PRESS



KOMATSU OBS 45-2 GAP FRAME PRESS

For auction inquiries,
please contact Jennifer Reiner at
(847) 545-6374 or
jennifer@perfectionindustrial.com

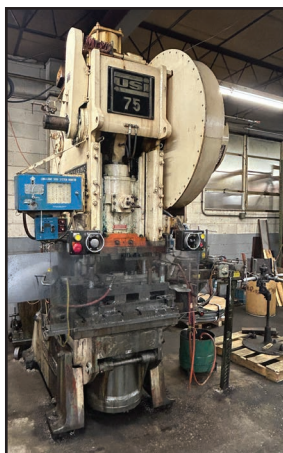
(11) GAP FRAME PRESSES, (4) FOUR SLIDES, COIL EQUIPMENT



USI CLEARING TORC-PAC 60 OBI PRESS



USI CLEARING TORC-PAC 60 OBI PRESS



USI CLEARING 75P 701 OBI PRESS



FEDERAL NO. 8 OBI PRESS



MINSTER NO. 4 32 TON OBI PUNCH PRESS

(4) FOUR SLIDES

(2) **NILSON 3-F FOUR SLIDES**, s/n 3F 102, 111710, w/ 3/16" Capacity, Link Electric System 2500 Programmable Limit Switch

NILSON 2-F FOUR SLIDE, s/n 97230, 1/8" Capacity

NILSON S-1-F FOUR SLIDE, s/n 67020, 3/32" Capacity

COIL EQUIPMENT

MECON 100CCS24 CRADLE STRAIGHTENER, s/n CCS0391, 10,000 LB x 24" Capacity

CWP COIL CRADLE, 5,000 LB x 24" Capacity

MECON 325F24 AIR FEED, s/n 2007, .125" x 24" Capacity

AIR FEEDS INC AF-2 AIR FEED, s/n 760548, 18" x 18" Capacity

AIR FEEDS INC AF1 AIR FEED, 18" x 12" Capacity

RAPID AIR 108B SERVO FEED, s/n B5915

RAPID AIR 108X SERVO FEED, s/n 10207

DALLAS INDUSTRIES D200-6-6 AIR FEED, s/n 19352, .156 x 6W x 6S Capacity

RAPID AIR R23FP FEEDER, s/n 93570

DURANT TOOL COMPANY 3525-48 PALLER DECOILER, s/n 1211

DURANT TOOL COMPANY 3525-48 PALLET DECOILER, s/n 0116

(2) **COILMATE CM3042 PALLET DECOILERS**, s/n 3400, 3327, w/ 3,500 LB Capacity

COILMATE SG3042 PALLET DECOILER, s/n 3750, 3,500 LB Capacity



NILSON 3-F FOUR SLIDE



NILSON 3-F FOUR SLIDE



NILSON 2-F FOUR SLIDE



NILSON S-1-F FOUR SLIDE



MECON 325F24 AIR FEED



AIR FEEDS INC AF1 AIR FEED



PALLET DECOILERS



MECON 100CCS24 CRADLE STRAIGHTENER

TOOLROOM MACHINES & INSPECTION EQUIPMENT

TOOLROOM MACHINES & INSPECTION EQUIPMENT

BRIDGEPORT Vertical Mills, **BRIDGEPORT** EZ-TRAK SX Vertical Mill, **BRIDGEPORT** ROMI 16-8 Engine Lathe, **CLAUSING** 5419 Engine Lathe, **GROB** Vertical Band Saw, **WELLSAW** Horizontal Band Saw, **BOYAR-SHULTZ** Surface Grinder, **COVEL** Surface Grinder, **KENT** Surface Grinder, **HARIG** Super 618 Surface Grinder, **WILTON** Belt Sander, **POWERMATIC** Drill Press, **FEDERAL** NO. 2 Press, **DI-ARCO** Notcher, Custom No. 600 Beam Clamp 3-Spindle Auto Tapping Machine, **DIXON** 16285 2-Piece Assembly Machine, Riveters, **ACME** Spot Welder, **HERCULES INDUSTRIES** Drum Flipper, **TORIT** Dust Collectors, **WILSON ROCKWELL** Hardness Tester, **BRIDGEPORT** Optical Comparator, Height Gauges, Pin Gauges, and More!



MIKROPOR MKUS-550 AIR DRYER



BRIDGEPORT EZ-TRAK SX VERTICAL MILL



GARDNER DENVER 75 HP AIR COMPRESSOR



BRIDGEPORT ROMI 16-8 ENGINE LATHE



BRIDGEPORT SENTRY OPTICAL
COMPARATOR



KENT KG5618 SURFACE GRINDER



BRIDGEPORT VERTICAL
MILLS



HARIG SUPER 618 SURFACE
GRINDER



WILSON ROCKWELL
B524-T HARDNESS
TESTER



BOYAR-SHULTZ 3060 SURFACE GRINDER



MITUTOYO OUTSIDE MICROMETER

FORKLIFTS, PLANT SUPPORT & COIL STOCK

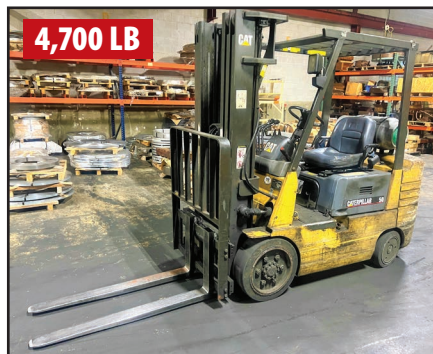
FORKLIFTS

CATERPILLAR GC25 4,700 LB LPG FORKLIFT, s/n 4EM05789

TOYOTA 8FGCU15 2,500 LB LPG FORKLIFT, s/n 15295

(2) RAYMOND EASI-OPC30TT 3,000 Lb Electric Order Pickers, s/n EASI-97-AE17290, EASI-96-AE16052 (Located in Gurnee, IL, Must Remove by Sept. 28)

TOYOTA 7BWS13 2,500 LB ELECTRIC PALLET STACKER, s/n 7BWS13-42118



CATERPILLAR GC25 FORKLIFT



TOYOTA 8FGCU15 FORKLIFT



RAYMOND EASI-OPC30TT 3,000 LB ELECTRIC ORDER PICKER



TOYOTA 7BS13 ELECTRIC PALLET STACKER

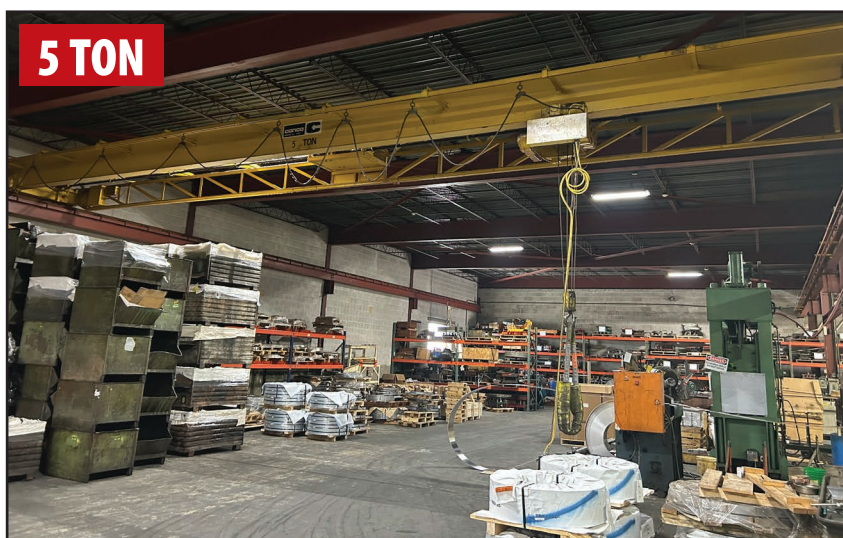
PLANT SUPPORT & COIL STOCK

2019 GARDNER DENVER LRS55-75F 75 HP ROTARY SCREW AIR COMPRESSOR, s/n S603294, 6857.6 hours at time of printing

GARDNER DENVER ESKAE/2 60 HP ROTARY SCREW AIR COMPRESSOR, s/n NA

2019 MIKROPOR MKUS-550 COMPRESSED AIR DRYER, s/n 1819MA10407

ALSO: CONCO 5-Ton Bridge Crane, Machine Vises, Bullet Vises, Spare Parts, Miscellaneous Hand and Power Tools, Hammer Drills, Pallet Racking, Cantilever Racks, Pallet Jacks, Work Benches, Tool Boxes, Shop Carts, Scrap Hoppers, Scrap Bins, Shop Cabinets, Flammable Liquids Storage Cabinets, and More!



CONCO BRIDGE CRANE

For auction inquiries, please contact Jennifer Reiner at
(847) 545-6374 or jennifer@perfectionindustrial.com

View our current auction schedule at www.perfectionindustrial.com

SALE DATE

Tuesday, September 19, at 10 AM CT

SALE LOCATION

106 W. 154th St., South Holland, IL 60473

INSPECTION

Monday, September 18, from 9AM to 4 PM CT, by appointment only

REMOVAL

All items must be removed no later than Friday, October 6. All removal is strictly on an appointment only basis. Anyone removing purchased items with a lift truck or another powered vehicle must have a certificate of insurance with a \$2M General Liability policy, the policy must include a Worker's Compensation rider, and that certificate of insurance must be provided to the auctioneer for review and approval prior to the auction.

TERMS OF SALE

An 18% Buyer's Premium will be charged on all assets purchased by buyers providing full payment is made within 48 hours following the sale. Acceptable forms of payment are cashier's check, company check (with bank letter of guarantee) or wire transfer within 48 hours of the sale close. For any Buyers failing to pay within the 48 hour stated payment period, the Buyer's Premium will be increased to 20%. All invoices paid with a credit card are subject to a 20% Buyer's Premium. Everything will be sold to the highest bidder, in accordance with the Auctioneer's customary "Terms of Sale", copies of which will be posted on the Auctioneer's website and subject to additional terms announced the day of sale. All items are sold "As is, Where is" without any warranty, express or implied.

FURTHER INFORMATION

For auction inquiries, please contact Jennifer Reiner at (847) 545-6374 or jennifer@perfectionindustrial.com.

AUCTION LICENSE

Perfection Industrial Sales IL Firm Lic. #444.000438, Steve Kleba IL Auctioneer Lic. #441.001778

Bidding Available Through
BidSpotter

To discuss your requirements for an auction, please call Perfection Industrial +1-847-545-6374