

3-DAY AUCTION SALE

Surplus to the Ongoing Operations of



**Complete Closure of Wenatchee
Works Aluminum Smelting Facility**

DAY 1
LIVE AUCTION via WEBCAST

SALE DATE
Tuesday, October 18, at 9:00 AM PT

DAY 2
LIVE AUCTION via WEBCAST

SALE DATE
Wednesday, October 19, at 9:00 AM PT

DAY 3
ONLINE AUCTION

SALE CLOSING FROM
Thursday, October 20, from 9:00 AM PT

SALE LOCATION
6200 Malaga Alcoa Highway,
Malaga, WA 98828

INSPECTION
Monday, October 17, by appointment only

COMPLETE CATALOG & INFORMATION:
<https://perfection.global/wenatcheeworks>

**PRE-AUCTION
OFFERS INVITED
ON MAJOR ASSETS**



ROYAL A-20 HAUL MASTER CRUCIBLE HAULER



LEBLOND 32" X 180" LATHE



ROUND0 PS-205 PLATE BENDING ROLL



HYSTER H700F FORKLIFT

3-Day Auction of 2,800 Acre Facility Featuring: Fabrication, Machining, Tool Room, Material Handling, Plant Support, Aluminum Smelting Equipment and More



Perfection Industrial Sales
ph +1-847-545-6374 • fax +1-847-427-8884
www.perfectionindustrial.com

Bidding Available Through
BidSpotter

Perfection Global, Washington Auction Firm Lic.# 21012283

DAY 1

LIVE AUCTION
via WEBCAST

Sale Date: Tuesday, October 18, at 9 AM PT

MACHINE TOOLS

LEBLOND 32" X 180" LATHE, s/n na, 28" 4-Jaw Chuck, 5-500 RPM, Quick Change Tool Post, Tailstock, Steady Rest, Threading

LEBLOND 16" X 132" LATHE, s/n na, 12" 3-Jaw Chuck, 40-1600 RPM, Quick Change Tool Post, Tailstock, Steady Rest, Newall DP700 DRO

LODGE & SHIPLEY POWERTURN 2516 LATHE, s/n 47471, 26.5" Swing, 72" Centers, 18" 3-Jaw Chuck, 12-650 RPM, Quick Change Tool Post, Tailstock, Steady Rest, Threading, 30 HP

LEBLOND 16" X 84" LATHE, s/n na, 12" 3-Jaw Chuck, 25-1250 RPM, Quick Change Tool Post, Tailstock, Steady Rest, Threading

SOUTH BEND NORDIC 15 LATHE, s/n na, 15" Swing, 60" Between Centers, 8" 3-Jaw Chuck, Tool Post, Tailstock

HARRISON M300 LATHE, s/n na, 13" Swing, 8" 3-Jaw Chuck, 58-1200 RPM, Tool Post, Steady Rest, Newall DP7 DRO

CARLTON 5' X 17" RADIAL ARM DRILL, s/n 3A3616, 15-1500 RPM, 24" x 30" x 18" Table

ACER ULTIMA 3VK MILLING MACHINE, s/n 0819231, 10" x 50" Power Feed Table, 600-4200 RPM, Sony LH51 DRO

WMW HECKERT FW450X180 APUG MILLING MACHINE, s/n 3347198/04, 15.5" x 49" Table, 45-2440 RPM, Sony LH51 DRO

GORTON 2-30 TRACER MASTER TWIN HEAD TRACER MILL, 80-5600 RPM, 12" x 77" w/ Extension, 3 HP Heads, w/ Tracer Master Hydraulic Servo Head, s/n 2725EFM



LEBLOND 32" X 180" LATHE



LODGE & SHIPLEY POWERTURN 2516 LATHE



LEBLOND 16" X 132" LATHE



GORTON 2-30 TRACER MASTER
TWIN HEAD TRACER MILL



ACER ULTIMA 3VK MILLING
MACHINE



WMW HECKERT FW450X180 APUG
MILLING MACHINE



CARLTON 5' X 17" RADIAL ARM DRILL

FABRICATION MACHINERY



ROUND0 PS-205 PLATE BENDING ROLL



KINGSLAND 125XSD HYDRAULIC IRONWORKER



DOALL 2013-V VERTICAL BANDSAW



STEELWELD H3-1/2-8 PRESS BRAKE

FABRICATION MACHINERY

ROUND0 PS-205 PLATE BENDING ROLL, s/n 966199, 10' x 5/16" Capacity

CINCINNATI CENTURY 4H10 SHEAR, s/n 3C177, 10' x 1/2" Capacity, (2) Front Supports, 8' Squaring Arm, Back Gauge

KINGSLAND 125XSD HYDRAULIC IRONWORKER, s/n 936397

W.F. WELLS B-25-1 HORIZONTAL BANDSAW, s/n A2274/B335, 1.25" x .042" x 19'8" Blade, Clamping

ELLIS 3000 MITRE HORIZONTAL BANDSAW, s/n 30987060, 13'5" x 1" x .035" Blade,

WELLSAW 1270A HORIZONTAL BANDSAW, s/n 2196

DOALL 2013-V VERTICAL BANDSAW, s/n 457-901381, 26" x 26" Table, 20" Throat

STEELWELD H3-1/2-8 PRESS BRAKE, s/n M-5135, 1/4" x 8' Capacity, 103" Between Housings

PRESS BRAKE TOOLING AND PUNCHES



W.F. WELLS B-25-1 HORIZONTAL BANDSAW



CINCINNATI CENTURY 4H10 SHEAR

FORGING HAMMERS, STRAIGHTENING PRESSES, MISC. MACHINERY, HEAT TREATING, AIR COMPRESSORS

FORGING HAMMERS

CHAMBERSBURG 15 CH FORGING HAMMER, s/n 1235 L1, 60 HP

BRADLEY 200 LB FORGING HAMMER, s/n 222376, 7.5 HP

STRAIGHTENING PRESSES

RODGERS HYDRAULICS SWY200X-1001 STRAIGHTENING PRESS, s/n 9216S51N, 200 Ton

RODGERS HYDRAULICS SY150-14-1001 STRAIGHTENING PRESS, s/n 1284-B65, 150 Ton

MISCELLANEOUS MACHINERY

FAMCO 21R Arbor Press, (2) **AVEY MA-6 Drill Presses**, s/n MA15552 & MA14713, Size 3, Type B, 150-1200 RPM, 22" x 20" Table, 12" Throat, **OSTER 582-A Portable Pipe & Bolt Threader**, s/n ABC-345, Drill Presses, Grinders, Sanders, Chop Saws, Pipe Benders, Pipe Threaders and Much More



RODGERS HYDRAULICS SWY200X-1001 STRAIGHTENING PRESS



DESPATCH ELECTRIC OVEN



CHAMBERSBURG 15 CH FORGING HAMMER

HEAT TREATING

DESPATCH ELECTRIC OVEN, s/n 44289, 300 Degrees F, 56 kW

HOSKINS FR252 ELECTRIC FURNACE, s/n 37071, 1580 F Max Temp, 26 Max KW, 22V

AIR COMPRESSORS

CAMERON TURBO-AIR 3000 CENTRIFUGAL AIR COMPRESSOR, s/n 18823, Like New, 700 HP Siemens Motor, 125 PSI, w/ Thermotech Cooling System



THERMOTECH COOLING SYSTEM

DAY 1

LIVE AUCTION
via WEBCAST

SALE DATE

TUESDAY,
OCTOBER 18,
AT 9 AM PT



700 HP

CAMERON TURBO-AIR 3000 CENTRIFUGAL AIR COMPRESSOR

CRANES, BRICK SHOP, CARPENTER SHOP

CRANES

75-TON DOUBLE GIRDER BRIDGE CRANE, Approx. 35' Span, Electric Hoist w/ Remote Control

KONECRANES 15-TON DOUBLE GIRDER BRIDGE CRANE, Approx. 65' Span

NORTHERN 10-TON DOUBLE GIRDER BRIDGE CRANE, Approx. 35' Span, Electric Hoist w/ Pendant Control

(5) SPANCO 2-TON GIRDER MOUNTED JIB CRANES, Approx. 14' Reach, Electric/Air Hoists w/ Pendant Controls



75-TON DOUBLE GIRDER BRIDGE CRANE



KONECRANES 15-TON DOUBLE GIRDER BRIDGE CRANE



NORTHERN 10-TON DOUBLE GIRDER BRIDGE CRANE

BRICK SHOP

CLIPPER Blockbuster Professional 14" Masonry Saw, **TARGET** EC20 Concrete Saw, **EDCO** CPM-8-9H Crete Plane, s/n 131010176, **STONE** XH670 Stomper Compactor, s/n 302012322, **GENERAC** XG10000E Generator, s/n 8283809, **CORE BORE** CB748 2-Speed Superpower Unit Core Drill w/ Base, **ANCHOR MFG** Concrete Mixer, **WILSON** 28" Block Saw, Jackhammers, **STIHL & PARTNER** Concrete Saws, and More

CARPENTER SHOP

OLIVER No. 217 Vertical Bandsaw, s/n 77398, **OLIVER** 88-D Table Saw, s/n 76837, **OLIVER** 299-D Planer, s/n 76457, **OLIVER** 34-DSD Combination Disc and Oscillating Sander, s/n 71560, **DELTA** 33-072 Radial Arm Saw, s/n 841140387



CLIPPER BLOCKBUSTER PRO.
14" MASONRY SAW



EDCO CPM-8-9H CRETE PLANE



STONE XH670 STOMPER
COMPACTOR



TARGET EC20 CONCRETE SAW



OLIVER 88-D TABLE SAW



DELTA 33-072 RADIAL ARM SAW



OLIVER NO. 217 VERTICAL
BANDSAW



OLIVER 299-D PLANER



OLIVER 34-DSD COMBINATION
DISC & OSCILLATING SANDER



WILSON 28" BLOCK SAW

**DAY
1**

**LIVE AUCTION
via WEBCAST**

AUTOMOTIVE SHOP, PLANT SUPPORT, CRUCIBLE HAULERS

AUTOMOTIVE SHOP

Adjustable Height Rolling Gantry Cranes, up to 5-Ton, **ARI-HETRA** HDML-9-2 Hybrid Mobile Column Car Lift System, 16,000 Lb Capacity, Engine Hoists, Jacks, Floor Jacks, **KENNEDY** Toolboxes, **ECONOLINE** Abrasive Blast Cabinet, Rigging Supplies, Power Washers, **LINCOLN & MILLER** Welders, Sanders, Chop Saws, Air Hose Reels, Oil Dispensing Station, **PARKER** Hose Crimper, **FERRET** 40 Charging System Analyzer, **FERRET** 42HD Battery Load Tester, **ROBINAIR** 34988 Refrigerant Recovery Machine and Much More

PLANT SUPPORT

Meter and Testing Room w/ Ohmmeters, Tachometers, Sound Meters, Quality Analyzers, Multimeters, Thermal Imagers, Calibrators, (23) Welders & Plasma Cutters from **LINCOLN, MILLER, ESAB, L-TEC AND THERMAL DYNAMICS**, Welding Tables, **LINCOLN** Fume Extractors, (100) **STRONGHOLD** Shop Cabinets, **LISTA** Cabinets, **LISTA** Work Benches, **KURT** Machine Vises, Bench Vises, Tooling, Chucks, Mag Drills, Anvils, Rod Ovens, Ladders, Work Benches, Power, Pneumatic & Hand Tools, Rigging & Lifting Equipment, **ENERPAC** Hydraulic Jacks and Rams, Pipe Benders and More



5-TON
WALLACE 5T19-15AC ROLLING GANTRY



ARI-HETRA HDML-9-2 HYBRID MOBILE CAR LIFT SYSTEM



LINCOLN FUME EXTRACTORS



VIEW OF WELDERS



METER & TESTING ROOM



LISTA CABINETS & WORKBENCHES

DAY 2

LIVE AUCTION
via **WEBCAST**

SALE DATE:
Wednesday, October 19, at 9 AM PT

CRUCIBLE HAULERS

2015 ROYAL A-20 HAUL MASTER CRUCIBLE HAULER, s/n 20A124, 30,000 Lb Capacity, CUMMINS 6-Cylinder Diesel Engine

ROYAL A-20-F CRUCIBLE HAULER, s/n 20A114, 30,000 Lb Capacity

ROYAL A-20-E CRUCIBLE HAULER, s/n 20A110, 30,000 Lb Capacity



ROYAL A-20 HAUL MASTER CRUCIBLE HAULER



ROYAL A-20-F CRUCIBLE HAULER



ROYAL A-20-E CRUCIBLE HAULER

WHEEL LOADERS, EXCAVATORS

WHEEL LOADERS

CATERPILLAR 905E WHEEL LOADER, s/n Z*227045081, Caterpillar Engine, 9'W bucket

JOHN DEERE 624G WHEEL LOADER, s/n DW624GD556798, 6-Cylinder John Deere Engine, 8'W Bucket, John Deere 6-Cylinder Diesel Engine

JOHN DEERE 344K WHEEL LOADER, s/n 1LU344KXAZB036875, 8' Bucket

CATERPILLAR IT28B WHEEL LOADER, s/n 1HF02121



CATERPILLAR 905E WHEEL LOADER



JOHN DEERE 624G WHEEL LOADER



JOHN DEERE 344K WHEEL LOADER



CATERPILLAR IT28B WHEEL LOADER

EXCAVATORS

KOMATSU PC200-6LC EXCAVATOR, s/n A82007, w/ INDECO IFP 1000 Pulverizer

ALLIED HY-RAM 750 CS HYDRAULIC IMPACT HAMMER

DAY 2 | LIVE AUCTION
via WEBCAST

Sale Date: Wednesday, October 19, at 9 AM PT

**PRE-AUCTION OFFERS INVITED
ON MAJOR ASSETS**



KOMATSU PC200-6LC EXCAVATOR

For auction inquiries, please contact Jennifer Reiner at (847) 545-6374 **+1-847-545-6374**

RAIL CAR MOVER, AERIAL LIFTS

RAIL CAR MOVER

TRACKMOBILE 4200 TURBO RAIL CAR MOVER, s/n na

AERIAL LIFTS

GENIE S-65 TELESCOPING BOOM LIFT, s/n 737, 65' Max Platform Height, 56'4" Max Platform Reach, (2) Maximum Occupants

2007 GENIE Z-45/25 ARTICULATED BOOM LIFT, s/n Z452507-32027, 45'3" Max Platform Height, 24'6" Max Platform Reach, (2) Max Occupants, 500 Lb Weight Capacity

2014 GENIE GS-2646 SCISSOR LIFT, s/n GS4615A-135895, 26' Max Platform Height, 32' Max Working Height, 1,000 Lb Weight Capacity

SKYJACK SJII 4626 SCISSOR LIFT, s/n na, 26' Max Platform Height, 47.25" Deck Extension, 32' Max Working Height, 1000 Lb Max Platform Weight

(2) GENIE GS-1930 SCISSOR LIFTS, 19' Max Platform Height, 25' Max Work Height, 500 Lb Weight Capacity

SKYJACK SJM 3015 SCISSOR LIFT, s/n 18472, 15' Max Platform Height, 500 Lb Weight Capacity

GENIE AWP-15S AERIAL WORK PLATFORM, s/n 3899-13436, 350 Lb Max Weight Capacity

COTTERMAN MAXI-LIFT MAN LIFT, s/n YOO322



TRACKMOBILE 4200 TURBO RAIL CAR MOVER



SKYJACK SJII 4626 SCISSOR LIFT



SKYJACK SJM 3015 SCISSOR LIFT



GENIE Z-45/25 ARTICULATED BOOM LIFT



GENIE GS-2646 SCISSOR LIFT



GENIE GS-1930 SCISSOR LIFTS



GENIE S-65 TELESCOPING BOOM LIFT

FORKLIFTS, MOBILE CRANES, VACUUM TRUCKS



HYSTER H700F FORKLIFT



HYSTER H90FT LP FORKLIFT



CLARK GCS25MC LP FORKLIFT

FORKLIFTS

HYSTER H700F FORKLIFT, s/n E008D01590T, 70,000 Lb Capacity, 124" Load Height, Fork Positioners

HYSTER S155XL LP FORKLIFT, s/n B024004751U, 15,500 Lb Capacity, 2-Stage Mast, Side Shift

HYSTER H90FT LP FORKLIFT, s/n P005V02360G, 9,000 Lb Capacity, 3-Stage Mast, Side Shift

HYSTER H70FT LP FORKLIFT, s/n L177B20919E, 7,000 Lb Capacity, 3-Stage Mast, Side Shift

CLARK GCS25MC LP FORKLIFT, s/n G138MC-0003-8750K0F, 5,000 Lb Capacity, 3-Stage Mast, Side Shift



HYSTER S155XL LP FORKLIFT

MOBILE CRANES

GROVE RT 600B ROUGH TERRAIN HYDRAULIC CRANE, s/n na, 32-80' Full Power Boom, 30' Swingaway Extension, Full Cab, Ball Bearing Swing Circle w/ 360 Degree Continuous Rotation, Outriggers

GROVE IND-36 CARRY-DECK CRANE, s/n 50379, 7.5 Ton Capacity

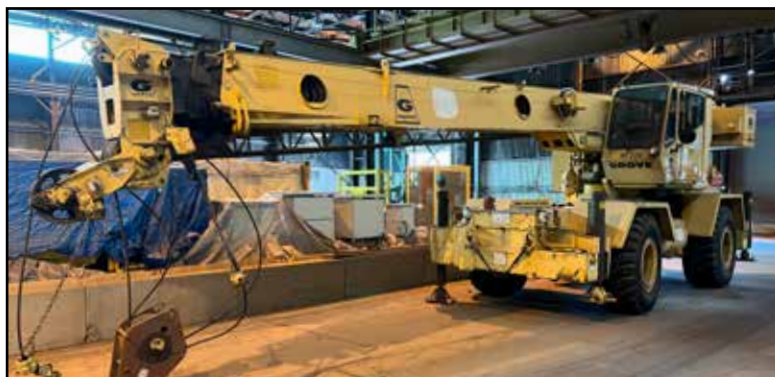
VACUUM TRUCKS

PETERBILT FAST-VAC INDUSTRIAL VACUUM TRUCK, VIN 1XP-ALBOX-1-NN319503, Wet & Dry Mode, 5,000 CFM/ 1100 RPM Vacuum Pump Max Speed, Speed

INTERNATIONAL 4900 4X2 FAST-VAC INDUSTRIAL VACUUM TRUCK, VIN 1HT5DNZN8PH478846, Wet & Dry Mode, 5,000 CFM/ 1100 RPM Vacuum Pump Max Speed, Speed



PETERBILT FAST-VAC INDUSTRIAL VACUUM TRUCK



GROVE RT 600B ROUGH TERRAIN HYDRAULIC CRANE



INTERNATIONAL 4900 4X2 FAST-VAC INDUSTRIAL VACUUM TRUCK



GROVE IND-36 CARRY-DECK CRANE

BUCKET TRUCK, VACUUM SYSTEMS, DRYING OVEN, HAULERS, CRUCIBLE HEATERS

BUCKET TRUCK

FORD SUPER DUTY CUSTOM BUCKET TRUCK, VIN 2FDLD47G2MCA71734, 7,854 Miles, Telsta Bucket



FORD SUPER DUTY CUSTOM BUCKET TRUCK

INDUSTRIAL VACUUM SYSTEMS

(4) HI-VAC 240 PORTABLE INDUSTRIAL VACUUM SYSTEMS, s/n 1797, 1528, 1828, 1575

HI-VAC 310 PORTABLE INDUSTRIAL VACUUM SYSTEM, s/n HV-3451

HI-VAC 201SP INDUSTRIAL VACUUM SYSTEM, s/n UV-3063, 20 HP

ALUMINUM DRYING OVEN

IHEI ALUMINUM DRYING OVEN SYSTEM, s/n 4292, Dual Chamber, Gas, 30 PSI Gas Pressure, 2" Line Size Required



4 AVAILABLE

HI-VAC 240 PORTABLE INDUSTRIAL VACUUM SYSTEMS



HI-VAC 310 PORTABLE INDUSTRIAL VACUUM SYSTEM



IHEI ALUMINUM DRYING OVEN SYSTEM

HAULERS

(2) GLAMA GAT-75 CARBON PALLET HAULERS, s/n 929-3, 929-2, 16,000 Lb Carrying Capacity

CRUCIBLES & CRUCIBLE HEATER SYSTEMS

(4) NORTH AMERICAN MFG NATURAL GAS FIRED CRUCIBLE HEATER SYSTEMS, 1.5 MM BTU/HR Heating Capacity, Ambient Temp to 1200 F, 35 PSI Natural Gas Fuel Supply

(20) CRUCIBLES



4 AVAILABLE

NORTH AMERICAN MFG NATURAL GAS FIRED CRUCIBLE HEATER SYSTEMS



2 AVAILABLE

GLAMA GAT-75 CARBON PALLET HAULERS

DAY 2
LIVE AUCTION via WEBCAST

SALE DATE:
Wednesday, October 19 at 9 AM PT

LAB EQUIPMENT, PLANT SUPPORT

LAB EQUIPMENT

RIGAKU RIX2100X-RAY FLUORESCENCE SPECTROMETER, s/n UR26016

(2) DIANO 2100E X-RAY DIFFRACTOMETER SYSTEMS

PERKIN ELMER ANALYST 400 ATOMIC ABSORPTION SPECTROMETER, s/n 201S8062502

(2) ANGSTROM 4451A-1 SAMPLE PRESSES, s/n 4600-139 & 4600-127



DIANO 2100E X-RAY
DIFFRACTOMETER SYSTEMS



PERKIN ELMER ANALYST 400
ATOMIC SPECTROMETER



ANGSTROM 4451A-1
SAMPLE PRESSES



RIGAKU RIX2100X-RAY FLUORESCENCE SPECTROMETER

PLANT SUPPORT

LANDA SLT6-32824E MOBILE PRESSURE WASHER, s/n 11105210-161824, 27 HP, 3200 PSI, 6.3 GPM, on Trailer

CHICAGO PNEUMATIC SINGL/SCREW 185 HUSHED POWER MOBILE AIR COMPRESSOR, s/n 93655, 1500-3100 RPM

ALSO: FREIGHTLINER Aggregate Mixer Truck, (10) **TAYLOR DUNN** Utility Vehicles, **TENNANT** Floor Sweepers, (2) **FAIRBANKS** 12-8710-S Floor Scales, 30 Ton Capacity, (2) Mobile Diesel Hydraulic Systems, **KNAACK** Job Boxes, **LINCOLN & MILLER** Welder/Generators, **MILLER, L-TEC**, and **LINCOLN** Welders, Power Tools, Air Tools, Hand Tools, Pipe Threaders, **STRONGHOLD** Cabinets, Flammable Liquids Cabinets, Self-Dumping Hoppers, Huge Quantity of **KALA** Alumina Bake Brick, and Much More



FREIGHTLINER AGGREGATE MIXER TRUCK



LANDA SLT6-32824E PRESSURE WASHER



(2) TENNANT FLOOR SWEEPERS



TAYLOR DUNN UTILITY VEHICLES



FAIRBANKS 12-8710-S FLOOR SCALES



SELF DUMPING HOPPERS



ASSORTED WELDER/GENERATORS



KNAACK JOB BOXES



KALA ALUMINA BAKE BRICK



VIEW OF WELDERS



STRONGHOLD CABINETS



ASSORTED TOOLS



CHICAGO PNEUMATIC 185 AIR COMPRESSOR

HUGE SELECTION OF PLANT EQUIPMENT

DAY 3

ONLINE AUCTION

SALE CLOSING FROM:
Thursday, October 20, at 9 AM PT

HUGE SELECTION OF PLANT EQUIPMENT

Storage, Maintenance and Spares Buildings Featuring Bearings, Pillow Blocks, Circuit Boards, Wire, Power Supplies, Belts, Valves, Cylinders, Transformers, Contactors, Breakers, Starters, Solenoids, Alternators, Gear Pumps, Filters, Coils, Frequency Drives, Crane Controls, Servo Motors, PPE, Limit Switches, Fuses Electrical Supplies, Switches, Pallet Racking, (100+) Motors up to 250 HP, Gear Boxes, Hand Tools, Pneumatic Tools, Machinist Tools, Rigging Equipment, Hoist Rings, Eye Bolts, Shackles, Enerpac Pumps and Rams, Clamps, Flammable Liquids Cabinets, Hydraulics, **STRONGHOLD** Cabinets, Welding, Power Tools, Hand Tools, Pneumatic Tools and Much More



SALE LOCATION
6200 Malaga Alcoa Highway,
Malaga, WA 98828

INSPECTION
Monday, October 17, by appointment only

Bidding Available Through
BidSpotter

DAY 1
LIVE AUCTION via WEBCAST

SALE DATE
Tuesday, October 18, at 9:00 AM PT

For auction inquiries, please contact Jennifer Reiner at
(847) 545-6374 or jennifer@perfectionindustrial.com

DAY 2
LIVE AUCTION via WEBCAST

SALE DATE
Wednesday, October 19, at 9:00 AM PT

View our current auction schedule at www.perfectionindustrial.com

DAY 3
ONLINE AUCTION

SALE CLOSING FROM
Thursday, October 20, from 9:00 AM PT

REMOVAL

All items must be removed no later than Friday, November 11. All removal is strictly on an appointment only basis. Anyone removing purchased items with a lift truck or another powered vehicle must have a certificate of insurance with a \$2M General Liability policy, the policy must include a Worker's Compensation rider, and that certificate of insurance must be provided to the auctioneer for review and approval prior to the auction.

TERMS OF SALE

An 18% Buyer's Premium will be charged on all assets purchased by buyers providing full payment is made within 48 hours following the sale. Acceptable forms of payment are cashier's check, company check (with bank letter of guarantee) or wire transfer within 48 hours of the sale close. For any Buyers failing to pay within the 48 hour stated payment period, the Buyer's Premium will be increased to 20%. All invoices paid with a credit card are subject to a 20% Buyer's Premium. Everything will be sold to the highest bidder, in accordance with the Auctioneer's customary "Terms of Sale", copies of which will be posted on the Auctioneer's website and subject to additional terms announced the day of sale. All items are sold "As is, Where is" without any warranty, express or implied.

FURTHER INFORMATION

For auction inquiries, please contact Jennifer Reiner at (847) 545-6374 or jennifer@perfectionindustrial.com.

AUCTION LICENSE

Perfection Global, Washington Auction Firm Lic.# 21012283