

LIVE WEBCAST

**ONLINE ONLY
AUCTION**

FULL FACILITY CLOSURE – PERMANENT MOLD, SAND, ALUMINUM, MAGNESIUM & INVESTMENT CASTINGS FOR AEROSPACE, ORDNANCE & AUTOMOTIVE PARTS APPLICATIONS



Featuring: Sand Blending & Handling Systems, Vibratory Shakers, Vertical Bandsaws, Grinding Department, (20+) BAKER & THERMTRONIX Gas-Fired Crucible & Melting Furnaces, CLEVELAND R-1532 Hydraulic Mold Rollover Draw, HALL 3HSX Mold Casting Machine, FOSECO & THERMTRONIX Degassing Units, Heat Treat, CNC Machine Shop Including HAAS & FADAL VMCs, Tool Room, CMM & Inspection Room, (3) YALE Fork Lifts up to 8,000-Lb, Vehicles, Free Standing Bridge Cranes, MRO & Plant Support



SAND HANDLING AND MOLD MAKING SYSTEM



3 AVAILABLE

NEW BAKER GAS FIRED 400-5
MAG CRUCIBLE FURNACES



CLEVELAND R-1532 HYDRAULIC
MOLD ROLLOVER DRAW

SALE DATE

Thursday, August 11, at 10:00 AM PT

LOCATION

1545 W Roosevelt Street,
Asuza, California 91702

INSPECTION

Wednesday, August 10,
by Appointment Only

Pre-Auction Offers Invited on Major Assets

Complete Catalog & Information Available
at <https://perfection.global/asuzacastings>



**PERFECTION
Industrial Sales**

ph +1-847-545-6374 • fax +1-847-427-8884
www.perfectionindustrial.com



In Conjunction With:

**World Equipment
& Machine Sales Co.**

ph +1-440-519-1745 • www.foundry-eqpt.com

Bidding Available Through

BidSpotter

SAND BLENDING & HANDLING SYSTEMS, FURNACES



SAND HANDLING AND MOLD MAKING SYSTEM

SAND BLENDING & HANDLING SYSTEMS

SAND HANDLING AND MOLD MAKING SYSTEM, Comprising 60-Ton, No. 105 Storage Bin, 2 HP Belt Conveyor, 5 HP Bath Sand Bucket Elevator, Batch Hopper, SIMPSON 1-1/2 G Muller, 20 HP, MILLER Hopper, 5 HP Prepared Sand Bucket Elevator, Aerator, (6) 40 Cu./Ft. Molder Hoppers, Feeder Bin and Flask Filler, Oscillating Pan Conveyor, 7.5 HP Bucket Elevator, SIMPLICITY Double Deck Screen, Screened Sand Bucket Elevator

FOUNDRY SAND BLENDING AND HANDLING SYSTEM, Comprising 725 Cu./Ft. Receiving Hopper, 200 Sq. Ft Filter Vent, 1 HP Bucket Elevator, 140 Cu./Ft. Surge Bin, 5 Cu./Ft. Hopper w/1/8 HP Accurate Feeder, 30-Gallon Chemical Tank w/.75 HP Powder Pump, 1.5 HP, Screw Conveyor, SIMPSON Pro-Mix Jr. Mixer, 9-Ton Per Hour Capacity, 10 HP

SAND HANDLING SYSTEM, Comprising SIMPLICITY OA-95-D 15 HP Shaker, 3 HP Belt Conveyor, 7.5 HP Bucket Elevator, SIMPLICITY 6570 5 HP Screen and Lump Breaker, 10' x 16' Surge Bin, 1,098 Cu./Ft. Capacity, 2 HP Discharge Belt Conveyor, NATIONAL 1-1/2F Bucket Loader, 5 HP, SIMPSON 1-1/2F Mix-Muller, 15 HP, 50 Cu./Ft. Surge Hopper, Belt Conveyors, 3 HP Bucket Elevator, (3) 60 Cu./Ft. Molder Hoppers, (2) 40 Cu./Ft. Milder Hoppers

MOLD/CORE SAND MIXING SYSTEM, Comprising Pneumatic Receiver Vessel, 5 Cu./Ft. Sand Hopper, 40 Cu./Ft., KLOSTER II-300 Versa-Mull Mixer, s/n MS-7896, 9.25 HP, Sand Hopper, 40 Cu./Ft., SIMPSON Pro-Mix Jr Mixer, 11.5 HP, Sand Hopper, 40 Cu./Ft., GAYLORD Cold Box Core Machine, DYNAMIC Air Modu-Kleen 343-400, 400 Sq. Ft. Filter Area, Reverse Air Cleaning System



SAND HANDLING SYSTEM



FOUNDRY SAND BLENDING AND HANDLING SYSTEM



MOLD/CORE SAND MIXING SYSTEM

FURNACES

(3) **NEW BAKER GAS FIRED 400-S MAG CRUCIBLE FURNACES**, s/n 801, 803, and 806, ECLIPSE Ratio-Air Burner 750,000 BTU, 1,700 Degrees F Max. Operating Temp

(3) **BAKER GAS FIRED 400-S MAG CRUCIBLE FURNACES**, s/n 802, 804, 805, 750,000 BTU, 1,700 Degrees F Max. Operating Temp

ALSO: (4) **BAKER 400 FURNACES**, (6) **BAKER 900 FURNACES**, (6) **THERMTRONIX GS-900 GAS FIRED FURNACES**, **THERMAL 350 CRUCIBLE FURNACES**, **PACIFIC KILN PBF-60F HEAT TREAT FURNACE**, s/n 0689-127

SALE DATE

Thursday, August 11,
at 10:00 AM PT

LOCATION

1545 W Roosevelt St.,
Asuza, California 91702

INSPECTION

Wednesday, August 10,
by Appointment Only



BAKER GAS FIRED 400-S MAG CRUCIBLE FURNACE



PACIFIC KILN PBF-60F HEAT TREAT FURNACE



(3) NEW BAKER GAS FIRED 400-S MAG CRUCIBLE FURNACES



VIEW OF ASSORTED FURNACES

20+ AVAILABLE



BIRMINGHAM VJ5523
VERTICAL MILL



ACCUPATH II AC-3KV
VERTICAL MILL



ACRAMILL 942VS VERTICAL MILL



TANNEWITZ GH VERTICAL
BANDSAW



ASSORTED NORTHFIELD
VERTICAL BANDSAWS

ROLLOVER DRAW, PERMANENT MOLD CASTING MACHINE, DEGASSING SYSTEMS, BOILER, VERTICAL MACHINING CENTERS, TURNING CENTER, MILLING MACHINES, VERTICAL BANDSAWS



CLEVELAND R-1532 HYDRAULIC MOLD ROLLOVER DRAW



FOSECO MDU-300
DEGASSING UNIT



20 AVAILABLE
THERMTRONIX 3602 AUTOCLEAN
DEGASSING UNITS



HALL 3HSX PERMANENT MOLD CASTING MACHINE

ROLLOVER DRAW

CLEVELAND R-1532 HYDRAULIC MOLD ROLLOVER DRAW, s/n 49600

PERMANENT MOLD CASTING MACHINE

HALL 3HSX PERMANENT MOLD CASTING MACHINE, s/n 331899, 20 GPM Auto Hydraulic Unit

DEGASSING SYSTEMS

FOSECO MDU-300 DEGASSING UNIT, s/n 110

(2) THERMTRONIX 3602 AUTOCLEAN DEGASSING UNITS

READING FOUNDRY RE3/6 DEGASSING SYSTEM, s/n N1008

BOILER

MCKENNA MH-25 NATURAL GAS BOILER, s/n H2171, 1,060,000 BTU Input, 870 Rated Steam Capacity

VERTICAL MACHINING CENTERS

2001 HAAS VF0B VERTICAL MACHINING CENTER, s/n 25915, HAAS CNC Control, 14" x 26" Table, 20 ATC, CAT 40 Spindle Taper, 20 HP, 15,000 RPM, 20"-X, 16"-Y, 20"-Z

FADAL VMC 4020 VERTICAL MACHINING CENTER, s/n 9601648, CNC 88HS Control, 20" x 43.5" Table, 20 ATC, CAT 40 Spindle Taper, 40"-X, 20"-Y, 20"-Z

TURNING CENTER

HAAS HL2 TURNING CENTER, s/n 60546, HAAS CNC Control, 10-Position Turret, 6" 3-Jaw Chuck, Tailstock, 10" Max. Turning Dia., 20" Swing, 24" Centers

MILLING MACHINES

BIRMINGHAM VJ5523 VERTICAL MILL, s/n 000049, 9" x 49" Table, 65-5,600 RPM, Power Feed, 2 HP

ACCUPATH II AC-3KV VERTICAL MILL, s/n 2001018, 10" x 54" Table, Power Feeds, 3 HP, NEWALL Topaz DRO

ACRAMILL 942VS VERTICAL MILL, s/n 4181, 80-5,440 RPM, 9" x 42" Table

CERAMILL VERTICAL MILL, s/n NA, 50-5,440 RPM, 9" x 42" Table, Power Feed, SARGON 933 DRO

BRIDGEPORT VERTICAL MILL, s/n 144895, 9" x 42" Table, 80-2,720 Spindle Speed, Power Feed, 1.5 HP

BRIDGEPORT VERTICAL MILL, s/n NA, 9" x 42" Table, Power Feed, 80-2,720 RPM

INDUMA VERTICAL MILL, s/n NA, 9" x 42" Table, 80-2,713 RPM, 2 HP

TREE VERTICAL MILL, s/n NA, 10.5" x 48 Table, 50-2,500 RPM, 3 HP

SHARP DL-UH 1-182 HORIZONTAL/VERTICAL MILLING MACHINE, s/n 16384

VERTICAL BANDSAWS

(5) NORTHFIELD 36 VERTICAL BANDSAWS, s/n 920476-1, 733698, B170121-F, A040910-J and NA

TANNEWITZ GH VERTICAL BANDSAW, s/n 78081, 36" Throat, 37" x 36" Table

DELTA 28-303 VERTICAL BANDSAW, s/n 90A02635, 13.5" Throat, 14" x 14" Table

(2) DAVIS & WELLS VERTICAL BANDSAWS, 19.5" Throat, 26" x 26" Table

CRAFTSMAN 14" VERTICAL BANDSAW, 2-Speed, 6" Cutting Depth



HAAS VF0B VERTICAL MACHINING CENTER



FADAL VMC 4020 VERTICAL MACHINING CENTER



HAAS HL2 TURNING CENTER

Pre-Auction Offers Invited
on Major Assets

TOOL ROOM & WOODWORKING, INSPECTION



CINCINNATI ENGINE LATHE



RUTLAND 2649-1190 LATHE



CAROLINA CBP 1200 50-TON H-FRAME SHOP PRESS



BURR-KING 760 BELT SANDERS



FRIEDRICH ZIMMERMANN SZ2 DUAL DISC SANDER



ROCKWELL-INVICTA 22655 13" PLANER



DELTA ROCKWELL RADIAL ARM SAW



DELTA UNISAW 10" TILTING ARBOR TABLE SAW



(1 OF 2) KELCO BLAST CABINETS



BAIRD METALS ANALYZER



TINIUS OLSEN TENSILE TESTER

TOOL ROOM & WOODWORKING

CINCINNATI ENGINE LATHE, s/n NA, 15" Swing, 54" Between Centers, 10" 3-Jaw Chuck, 30-1,200 RPM, Tailstock
RUTLAND 2649-1190 LATHE, s/n NA, 58-1,100 RPM, 6" 3-Jaw Chuck, 10" Swing, 36" Between Centers, Tool Post, Tailstock
KENT KGS-250AH SURFACE GRINDER, s/n 8112191-7
DAKE H-FRAME SHOP PRESS, s/n NA, Approx. 50-Ton Capacity
CAROLINA CBP 1200 50-TON H-FRAME SHOP PRESS, s/n 11601
ONSRUD W-1036 OVERHEAD PIN ROUTER, s/n 7358, 36" x 48" Table

ALSO: (5) BURR-KING 760 BELT SANDERS, BURR-KING 960 BELT SANDER, FRIEDRICH ZIMMERMANN SZ2 24" DUAL DISC SANDER, s/n 270, Max. Tilting Vertical Spindle Sander, 24" x 24" Table, STATE D20 20" DISC SANDER, s/n H2527, (2) APEX 20" DISC SANDERS, RUTLAND DS-20 20" DISC SANDER, MAX UNIVERSAL 36" DISC SANDER, KINDT COLLINS 36" DISC SANDER, (4) LATHE STYLE DUAL END SANDERS, ROCKWELL-INVICTA 22655 13" PLANER, s/n 13305, DELTA UNISAW 10" TILTING ARBOR TABLE SAW, s/n 90L04581, DELTA ROCKWELL RADIAL ARM SAW, s/n BY1998, KELCO 36-C BLAST CABINET, s/n C-5714, KELCO CH-36C BLAST CABINET, s/n 6544

INSPECTION

MITUTOYO BRM507 BRIGHT-M COORDINATE MEASURING MACHINE, s/n BB000062, w/RENISHAW MIP Probe
MITUTOYO BH-V710 COORDINATE MEASURING MACHINE, s/n 0054711, w/RENISHAW MIP Probe
THERMO ARL 4460 OPTICAL EMISSION METALS ANALYZER, s/n 1028
BAIRD METALS ANALYZER, s/n 3298A
ALSO: TINIUS OLSEN TENSILE TESTER, Height Master, Height Gauges, Gauge Blocks, 2-4-6 Blocks, Calipers, and More



MITUTOYO BRM507 BRIGHT-M CMM



MITUTOYO BH-V710 CMM



THERMO ARL 4460 OPTICAL EMISSION METALS ANALYZER

SALE DATE Thursday, August 11, at 10:00 AM PT

LOCATION 1545 W Roosevelt Street, Asuza, California 91702

INSPECTION Wednesday, August 10, by Appointment Only

VEHICLES, FORKLIFTS & SKID STEER, FREE STANDING CRANE SYSTEMS



ISUZU STAKE BED PICKUP TRUCK



TOYOTA TACOMA PICKUP TRUCK



CHEVROLET 2500 STAKE BED TRUCK



YALE GLP080 8,000 LB LP FORKLIFT

VEHICLES

2006 ISUZU STAKE BED PICKUP TRUCK, VIN 4KLB4B1U06J803498, 311,071 Miles

2005 TOYOTA TACOMA PICKUP TRUCK, VIN 5TENX22N45Z089598, 281,095 Miles

1999 CHEVROLET 2500 STAKE BED TRUCK, VIN 1GBGC24R5XR709897, 283,576 Miles

FORKLIFTS & SKID STEER

YALE GLP080 8,000 LB LP FORKLIFT, s/n K813V01576N, 3-Stage Mast, Side Shift, 48" Forks

YALE GLP060 6,000 LB LP FORKLIFT, s/n D875V02676N, 3-Stage Mast, Side Shift, 48" Forks

YALE GLP050R 5,000 LB LP FORKLIFT, s/n A875B31353B, 3-Stage Mast, Side Shift, 48" Forks

BOBCAT 751 SKID STEER LOADER, s/n 515711806



YALE GLP050R 5,000 LB LP FORKLIFT



YALE GLP060 6,000 LB LP FORKLIFT

SALE DATE

Thursday, August 11, at 10:00 AM PT

INSPECTION

Wednesday, August 10, by Appointment Only



BOBCAT 751 SKID STEER LOADER

CRANEVEYOR FREE STANDING CRANE SYSTEMS

FREE STANDING CRANE SYSTEMS

CRANEVEYOR FREE STANDING CRANE SYSTEM, 18'H x 18'W x 100'L, Dual Bridge w/(2) YALE 2-Ton Electric Hoists w/Pendant Controls

CRANEVEYOR FREE STANDING CRANE SYSTEM, 18'H x 48'L x 30'W, 2-Ton Capacity, Electric Hoist w/Pendant Control

CRANEVEYOR FREE STANDING CRANE SYSTEM, 18'H x 49'L x 36'W, 3,000 Lb Capacity, YALE and CM Electric Hoists w/Pendant Controls

CRANEVEYOR FREE STANDING CRANE SYSTEM, 18'H x 18'W x 33'L, 1,000 Lb Capacity, Electric Hoist w/Pendant Control

CRANEVEYOR FREE STANDING CRANE SYSTEM, 16'H x 20' x 18', 1,000 Lb Capacity Electric Hoist w/Pendant Control

CRANEVEYOR SINGLE RAIL CRANE SYSTEM, 1,000 Lb Capacity, 80'L



(1 OF 3) SULLAIR AIR COMPRESSORS



(1 OF 2) HANKINSON HPRP500-460 COMPRESSED AIR DRYERS



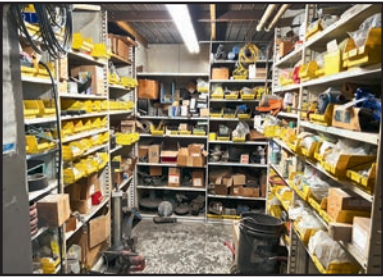
ALPHEUS SD15 CO2 MINIBLAST DRY ICE CLEANING SYSTEM



40' AND 20' SHIPPING CONTAINERS



MILLER SYNCROWAVE 351 ARC WELDER



COMPLETE MAINTENANCE DEPARTMENT



(50+) SECTIONS OF PALLET RACKING



REMOVAL

All items must be removed no later than Friday, August 26. All removal is strictly on an appointment only basis. Anyone removing purchased items with a lift truck or another powered vehicle must have a certificate of insurance with a \$2M General Liability policy, the policy must include a Worker's Compensation rider, and that certificate of insurance must be provided to the auctioneer for review and approval prior to the auction.

TERMS OF SALE

An 18% Buyer's Premium will be charged on all assets purchased by buyers providing full payment is made within 48 hours following the sale. Acceptable forms of payment are cashier's check, company check (with bank letter of guarantee) or wire transfer within 48 hours of the sale close. For any Buyers failing to pay within the 48 hour stated payment period, the Buyer's Premium will be increased to 20%. All invoices paid with a credit card are subject to a 20% Buyer's Premium. Everything will be sold to the highest bidder, in accordance with the Auctioneer's customary "Terms of Sale", copies of which will be posted on the Auctioneer's website and subject to additional terms announced the day of sale. All items are sold "As is, Where is" without any warranty, express or implied.

FURTHER INFORMATION

For auction inquiries, please contact Jennifer Reiner at +1-847-545-6374 or jennifer@perfectionindustrial.com.

PLANT SUPPORT

SULLAIR 12BS-50H AIR COMPRESSOR, s/n 003-87711, 50 HP, 125 PSIG

SULLAIR 12B-50H AIR COMPRESSOR, s/n 003-57930, 50 HP, 125 PSIG

SULLAIR 16-50H AIR COMPRESSOR, s/n 13046, 125 PSIG

DELTECH HGE500-460 COMPRESSED AIR DRYER, s/n HG500A4600810004, 500 SCFM 232 PSIG, R-134a Refrigeration

DELTECH HGD500 COMPRESSED AIR DRYER, s/n RD0B3500A0BA2NC09012, 500 SCFM, 232 PSIG, R-134a Refrigeration

(2) HANKINSON HPRP500-460 COMPRESSED AIR DRYERS, s/n H500A4600007132 and H500A4600008148, 500 SCFM, 200 PSIG, R134a Refrigeration

ALSO: ALPHEUS SD15 CO2 MINIBLAST DRY ICE CLEANING SYSTEM, (50+) SECTIONS OF PALLET RACKING, (2) 40' SHIPPING CONTAINERS, 20' SHIPPING CONTAINER, PIPE THREADER, MILLER SYNCROWAVE 351 ARC WELDER, FLAMMABLE LIQUIDS CABINETS, PALLET JACKS, PALLET TRUCK SCALES, SAFETY LADDERS, PARTS WASHERS, SCALES, FOREMAN'S DESK, WORK BENCHES, GRINDING WORK CELLS, COMPLETE MAINTENANCE DEPARTMENT, SHIPPING DEPARTMENT AND MUCH MORE

View our current auction schedule at

www.perfectionindustrial.com

Pre-Auction Offers Invited on Major Assets