

LIVE WEBCAST

ONLINE ONLY
AUCTION

SULZER

SULZER PUMPS, INC. (US) – COMPLETE CLOSURE OF THE PORTLAND
MANUFACTURING FACILITY – PHASE ONE

COMPLETE 75,000 SQ. FT. MACHINING FACILITY

FEATURING: 2019 G & L VTC 2500 Vertical Turning Center with Milling, 2014 G & L MC1600 Twin Pallet Horizontal Machining Center, G & L MC60 Horizontal Machining Center with Pallet Shuttle System, WALDRICH V/H-37 CNC Bridge Mill, BULLARD 56" DYN-AU-TAPE Vertical Boring Mill, Large Quantity of Machine Tooling & Tooling Cabinets, Milling Heads, Carlton Radial Drills, Welding Power Sources, Welding Supplies, Pipe & Tube Benders, Floor Standing Jib Cranes, Inspection, Test Equipment, Plant Support & More!



GIDDINGS & LEWIS VTC 2500 VERTICAL TURNING CENTER



GIDDINGS & LEWIS MC1600
TWIN PALLET HORIZONTAL
MACHINING CENTER

SALE DATE

Tuesday, June 14,
at 9:00 AM PDT

SALE LOCATION

2800 NW Front Ave.,
Portland,
Oregon 97210

INSPECTION

Monday, June 13,
by Appointment Only

**Pre-Auction Offers
Invited on
Major Assets**

Complete Catalog & Information Available at <https://perfection.global/sulzer>



**PERFECTION
Industrial Sales**

ph +1-847-545-6374 • fax +1-847-427-8884
www.perfectionindustrial.com

In Conjunction With:



Bidding Available Through
BidSpotter

ph +1-631-249-5566
www.prestigeequipment.com



GIDDINGS & LEWIS 36" TWIN PALLET VERTICAL TURNING CENTER

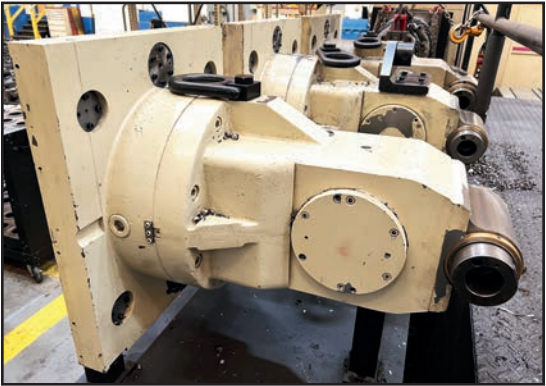
CNC VERTICAL TURNING CENTERS

2019 GIDDINGS & LEWIS VTC 2500 VERTICAL TURNING CENTER WITH MILLING, s/n 525-0143-19, FANUC Series 31i-B Control, w/Enhanced MDI Remote Pendant, 23-Station ATC, 98.42" Table Dia., 106.3" Turning Dia., 129.9" Max. Height Under Cross Rail, 129.9" Under Ram Face, 68.89" Z-Axis Ram Vertical Travel, 61.4" Ram Travel Left and Right of Center, 9.84" x 9.84" Ram Cross Section, Table Speeds: 1-200 RPM, 2-Speed Ranges, 112.6" HP Table Drive Motor, C-Axis Table, 360,000 Positions, Live Spindle Speeds to 4,000 RPM, 29/44 HP AC Spindle Drive Motor, RENISHAW Probing, KM80 KENNAMETAL Live Spindle Tooling Taper, High Pressure Thru-Spindle Coolant, 12-Wedge Lock Taper Pockets, 11-KM80ATC Modular Tool Pockets, Rigid Tapping, Thread Cutting, Chip and Splash Enclosure

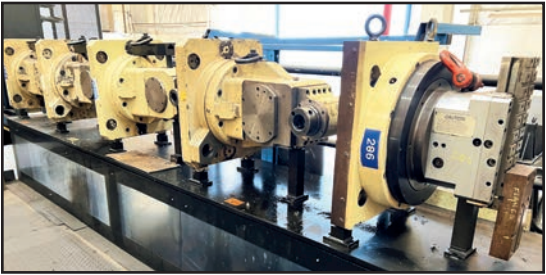
GIDDINGS & LEWIS 36" TWIN PALLET VERTICAL TURNING CENTER WITH MILLING, s/n 511-137-90, G & L 8000B Control, 30-Station ATC, No. 60 ANS Spindle Taper, 48" Turning Dia., 42" Height Under Cross Rail, (2) 38" Dia. 4-Jaw Comb. Manual Chucks with Pallet Shuttle, Table Speeds: 4.5-480 RPM, 25 HP Milling Spindle Drive, Speeds: 15-2,200 RPM, 250 IPM Rapids, 38" Ram Travel, 32" Horizontal Travel Right of Center, 26.5" Horizontal Travel Left of Center, 360,000 Programmable Positions C-Axis Milling Table Drive, 300 IPM, Coolant Thru Ram, Chip Conveyor



GIDDINGS & LEWIS MC 60 HORIZONTAL MACHINING CENTER



(3) ASSORTED G & L MC1600 HEADS



(5) ASSORTED G & L MC 60 HEADS

HORIZONTAL MACHINING CENTERS

2014 GIDDINGS & LEWIS MC1600 HORIZONTAL MACHINING CENTER, s/n 480-0271-14, FANUC 31i-B Control, 6.1" Spindle Dia., 120 ATC, (2) 63" x 98" Pallets, CAT 50 Spindle Taper, Speeds: 1-3,500 RPM, 4-Speed Headstock, Travels: X-141.73", Y-141.73" (128.34" Above Pallet), Z-49.2" Spindle Travel, W-59.05" Saddle Travel, Chip Blaster, High Pressure and Flood 1800 Liter Coolant System, 360,000 Position B-Axis Rotary Table, Probe Attachment, Chip Conveyor, 60 HP Spindle Motor, **MILLING HEAD ATTACHMENTS:** (2) KEY PRODUCTS Right Angle Double End ABS-80, s/n 212126-300/301, KEY PRODUCTS Right Angle Double End ABS-100, s/n 212127-300, CH-16 Contouring Head **INNOVATIVE TOOLING SOLUTIONS**, s/n 12-1351-CH16



GIDDINGS & LEWIS 60S HORIZONTAL MACHINING CENTER

GIDDINGS & LEWIS MC 60 HORIZONTAL MACHINING CENTER, s/n 450-232-90, G & L 8000 Control, 6" Spindle Dia., 100 ATC, (4) 60" x 96" Pallets, CAT 50 Spindle Taper, Speeds: 12-2,500 RPM, Travels: X-120", Y-120" (94" Above Pallets), Z-36" Spindle Travel, W-63" Saddle Travel, 25,000 Lb Pallet Weight Capacity, Auto Attachment Changer, 360,000 Position B-Axis Rotary Table, Thru Spindle High Pressure and Flood Coolant, Chip Conveyor, Part Probe, 50 HP Spindle Motor, **MILLING HEAD ATTACHMENTS:** (2) KEY PRODUCTS Right Angle Double End ABS-80, s/n K95123-910, KEY PRODUCTS Right Angle Double End ABS-100, GIDDINGS & LEWIS Contouring Head

GIDDINGS & LEWIS MC-60 S HORIZONTAL MACHINING CENTER, s/n 450-172-86, G & L 8000 Control, 6" Spindle Dia., Speeds: 12-2,000 RPM, CAT 50 Spindle Taper, 120-ATC, (2) 36" x 48" Pallets, Travels: X-66", Y-72" (56" Above Pallets), Z-36" Spindle, W-35", 360,000 Position Rotary Table, Thru Spindle and Flood Coolant, Chip Conveyor, 40 HP Spindle Motor [Note: Machine Is Not Operable]



G & L 60S PALLET POOL

TRAVELING COLUMN VERTICAL MACHINING CENTER, CNC VERTICAL BORING MILL, CNC BRIDGE MILL, LATHES, RADIAL ARM DRILLS



WALDRICH SIEGEN TABLE TYPE BRIDGE MILL



GIDDINGS & LEWIS 10VFS TRAVELING COLUMN VERTICAL MACHINING CENTER

TRAVELING COLUMN VERTICAL MACHINING CENTER

GIDDINGS & LEWIS 10VFS TRAVELING COLUMN VERTICAL MACHINING CENTER, s/n 912-00010-81, G & L 8000 Control, 50 ATC, CAT 45 Spindle Taper, 44" x 132" T-Slotted Table, (D22)

CNC VERTICAL BORING MILL

BULLARD 56" DYN-AU-TAPE CNC VERTICAL BORING MILL, s/n 33710, G & L 8000 CNC Control, 16-Station ATC, 56" 4-Jaw Chuck, 68" Swing, 73" Max. Height, Table Speeds: 2-320 RPM, 75 HP

CNC BRIDGE MILL

WALDRICH SIEGEN V/H-37 200/200/175 X 300 DOUBLE COLUMN CNC VERTICAL BRIDGE MILL, s/n 11.230, FANUC Series 15-M Control, 52-Station ATC, 69" x 118" T-Slotted Table, CAT 50 Spindle Taper, Travels: X-149.6" Table, Y-122.63" Horizontal Head Travel, Z-39.37" Vertical Ram, W-19.68" Quill Travel, 78.74" Between Columns, 78.74" Distance Top of Table to Face of Milling Spindle, Spindle Speeds: 16.7-3,000 RPM, 90 Degree Right Angle Head, Chip Conveyor



BULLARD 56" DYN-AU-TAPE VERTICAL BORING MILL

LATHES

MAZAK 24-200 HEAVY DUTY LATHE, s/n 50806, 20.5" 4-Jaw Chuck, 30-1,200 RPM, Quick Change Tool Post, 24" Swing, 192" Between Centers, (3) Steady Rests, Tailstock, Threading, NEWALL DP700 DRO

AMERICAN HIGH DUTY LATHE, s/n 67493-44, 28" 4-Jaw Chuck, 9-400 RPM, Quick Change Tool Post, 46" Swing, 144" Between Centers, (2) Steady Rests, Tailstock, NEWALL DP700 DRO, New Motor

MONARCH 22" X 72" LATHE, s/n 41763, 22" Swing, 72" Between Centers, 16-2,000 RPM, 15.5" 3-Jaw Chuck, Quick Change Tool Post, Tailstock, NEWALL DP700 DRO

RADIAL ARM DRILLS

CARLTON 8' X 19" RADIAL ARM DRILL, 8' Arm Length, 19" Dia. Column, 20 HP, 12-1,200 RPM Spindle Speeds, (2) 44" x 84" T-Slotted Base, 24" x 18" x 13" Table, (R8)

CARLTON 8' X 22" RADIAL ARM DRILL, 8' Arm Length, 22" Dia. Column, 80-800 RPM Spindle Speeds, 48" x 144" T-Slotted Base, w/60" x 60" Rotary Table

CARLTON 6' X 17" RADIAL ARM DRILL, 6' Arm Length, 17" Dia. Column, 12-1,200 RPM Spindle Speeds, 48" x 71" and 42" x 72" T-Slotted Base

Pre-Auction Offers Invited on Major Assets

Bidding Available Through
BidSpotter



MAZAK 24-200 HEAVY DUTY LATHE



AMERICAN HIGH DUTY LATHE



CARLTON 6' X 17" RADIAL ARM DRILL



MONARCH 22" X 72" LATHE



CARLTON 8' X 19" RADIAL ARM DRILL



CARLTON 8' X 22" RADIAL ARM DRILL



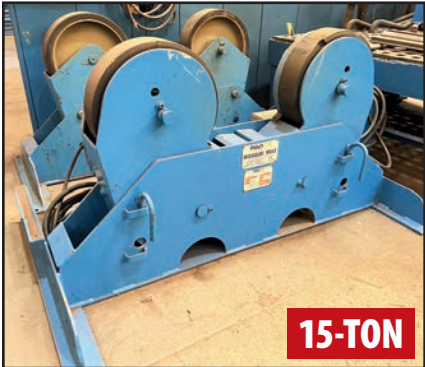
MARVEL SERIES 25 VERTICAL BANDSAW



TRINCO 48X24SL/45RLX DRY BLAST CABINET



JESSE ENGINEERING T-65 TUBE BENDER



PANDJIRIS MM-15 TANK TURNING ROLLS



PANDJIRIS 15-4 WELDING POSITIONER

Pre-Auction Offers
Invited on Major Assets



VIEW OF MILLER TIG WELDERS



VIEW OF VARIOUS WELDERS



READCO UPC25T WELDING POSITIONER



(2) ACORN TABLES, 5' X 5'



PULSATRON PFV-8-10 FUME COLLECTION SYSTEM



(2) UAS VP-1500 PORTABLE FUME COLLECTORS

MISCELLANEOUS MACHINERY

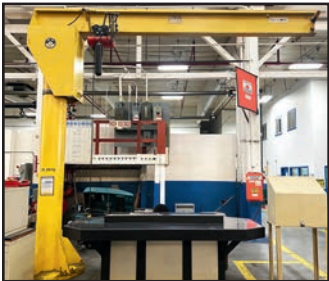
- MARVEL SERIES 25 VERTICAL BANDSAW, s/n F-20425-W, 25" x 28" Capacity, 55–340 FPM
- WELLSAW 1318 HORIZONTAL BANDSAW, s/n 4298, 1" x .035" x 150" Blade, Infeed Conveyor
- DAKE JOHNSON F-15 VERTICAL BANDSAW, s/n 1250411, 26.25" x 26.25" Table, 16" Throat, 10-Speed
- JESSE ENGINEERING T-65 HYDRAULIC TUBE BENDER, 2" Pipe Capacity, 3" Exhaust Tube Capacity, 7.5" Max. Bend Radius, Overhead Rotary Bending Clamp, s/n 5115300-718-13-BND
- RIDGID 535 SERIES PIPE THREADING MACHINE, s/n BE149880811
- KALAMAZOO 14" BELT SANDER, s/n NA, 20 HP, w/Collection System
- WELLS INDEX 125 MILLING MACHINE, s/n 18938, 15.25" x 44.75" T-Slotted Table, 420–4,200 RPM Spindle Speed, 1.5 HP
- JET JBG-10 10" BENCH GRINDER, 1-1/2 HP, 1,750 RPM
- H-FRAME HYDRAULIC SHOP PRESS, 10,000 PSI Hydraulic Pump System
- TRINCO 48X24SL/45RLX DRY BLAST CABINET, s/n 71806-12, w/TRINCO 450RC Collection System
- TRINCO 36/BP DRY BLAST CABINET, s/n 80013-20, w/TRINCO BP2 Collection System
- UNKNOWN MAKE 8" BELT SANDER
- DIAMOND GROUND PRODUCTS DIAMOND WHEEL GRINDER, s/n V2-10271
- PARLEC PARSETTER TMM SERIES 2500 TOOL PRESETTER, s/n NA, X-VISION Control System, DRO
- ELECTRO ARC 1SVOT TAP BURNER, s/n 14645, 15 KVA, 34.5" x 23.5" T-Slotted Table
- ELECTRO ARC 2SW PORTABLE TAP BURNER, s/n 15123, 15 KVA
- 2013 AIRFLOW SYSTEMS F/B800 DOWNDRAFT TABLE, s/n 1047016, 24" x 36" Table Area

WELDING

- PANDJIRIS MM-15 TANK TURNING ROLLS, s/n 81-2121-1, 15-Ton Turning Capacity, Rubber Wheels, 5-Ton Drive Roll, 5-Ton Idler Roll, 4"-144" Tank Dia. Range, Pendant Controls
- PANDJIRIS ALPHA 5.3 WELDING POSITIONER, s/n 10233X02-3, 12" x 12" Table, 1,500 Lb Capacity, Variable Speed Rotation, Pendant and Foot Switch Controls
- PANDJIRIS 15-4 WELDING POSITIONER, s/n 81-0171-1, 24" x 24" Table, 15" 3-Jaw Chuck, 1,500 Lb Capacity, Variable Speed Rotation, Pendant and Foot Switch Controls
- READCO UPC25T WELDING POSITIONER, s/n 102457, 42" Table Dia., 2,500 Lb Capacity
- MILLER DYNASTY 700 AC/DC TIG WELDER, s/n MD140117L
- (3) MILLER DYNASTY 350 AC/DC TIG WELDERS, s/n MC210338L, MC400220L, MC050070L
- MILLER SYNCROWAVE 350LX TIG WELDER, s/n LF400268L
- MILLER SYNCROWAVE 351 TIG WELDER, s/n KF891969, w/MILLER Coolmate 3 Cooler
- LINCOLN POWERWAVE 455M AC/DC MIG WELDER, s/n U1080802998, w/LINCOLN Power Feed 10M Wire Feed
- MILLER DELTAWELD 450 MIG WELDER, s/n JJ340410
- MILLER DIMENSION 302 MIG WELDER, s/n MC430087C, w/MILLER 22A Wire Feed
- MILLER MP-45E ARC MIG WELDER, s/n JC595202, w/MILLER JH-26 Wire Feed
- AIRCO 400 AMP DC MCS BUMBLEBEE MIG WELDER, s/n U500500
- MILLER GOLD STAR 300SS ARC WELDING POWER SOURCE, s/n KA904937
- (5) MILLER GOLD STAR 302 ARC WELDERS, s/n MC430143C, LF440075C, MC4440091C, MC430142C, LF440096C
- (2) ACORN 5' X 5' CLAMPING TABLES
- PULSATRON PFV-8-10 FUME COLLECTION SYSTEM, s/n 4-29-303, 4,500 CFM, 10 HP
- (2) UAS VP-1500 PORTABLE FUME COLLECTORS, s/n 60070176, 60070177, 3 HP

Bidding Available Through BidSpotter

(19) JIB CRANES, FACILITY SUPPORT



VIEW OF FREE STANDING JIB CRANES



PARLEC TOOL PRESETTER

(19) JIB CRANES

(2) MAR CRANE 3-TON FREE STANDING JIB CRANES, s/n K835, K831
(4) MAR CRANE 2-TON FREE STANDING JIB CRANES, s/n K832, K802, K752-2, K834
(3) US CRANE AND HOIST 2-TON FREE STANDING JIB CRANES
(3) BEACON LINE 2-TON FREE STANDING JIB CRANES
MAR CRANE 1-TON FREE STANDING JIB CRANE, s/n K1275

BEACON LINE 1-TON FREE STANDING JIB CRANE
(3) 1-TON FREE STANDING JIB CRANES
3/4-TON FREE STANDING JIB CRANE
SPANCO 1/4-TON FREE STANDING JIB CRANE



VIEW OF TOOL HOLDERS



VIEW OF T-SLOT PLATES

FACILITY SUPPORT

LARGE SELECTION OF TOOLING, CT50, CT45, CT60 TOOL HOLDERS, KM 80 TOOLING, MILLING AND TURNING TOOLS, LATHE TOOLING, CARBIDE INSERTS, BORING BARS, BORING HEADS, END MILLS, REAMERS TAPS, TWIST DRILLS, CORE DRILLS, FACE MILLS, STRESS RELIEVING OVEN, LYON AND LISTA MODULAR CABINETS, WORK BENCHES, TOOL BOXES, HAND TOOLS, POWER TOOLS, AIR TOOLS, RIGGING SUPPLIES, CHAIN, SLINGS, CLEAVES, CRANE SCALE, HOSE REELS, FLAMMABLE LIQUIDS SAFETY CABINETS, ARBOR PRESSES, DRILL POINT GRINDERS, BENCH GRINDERS, CHOP SAWS, LOCKERS AND MUCH MORE!



VIEW OF LYON MODULAR CABINETS



VIEW OF LISTA MODULAR CABINETS



VIEW OF LYON HEAVY DUTY CABINETS



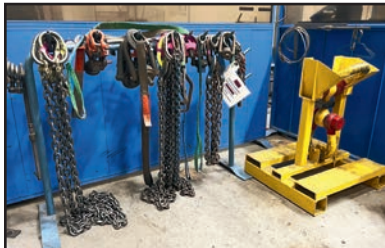
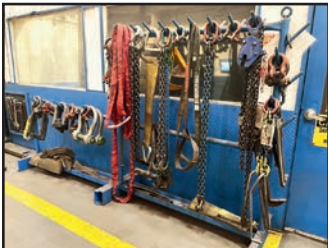
VIEW OF CABINETS



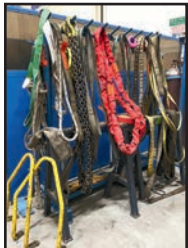
VIEW OF LISTA MODULAR CABINETS



VIEW OF LYON HEAVY DUTY CABINETS



VIEW OF RIGGING



View our current auction schedule at www.perfectionindustrial.com

SULZER

SULZER PUMPS, INC. (US) – COMPLETE CLOSURE OF THE PORTLAND MANUFACTURING FACILITY – PHASE ONE

REMOVAL
All items must be removed no later than Friday, July 1. All removal is strictly on an appointment only basis. Anyone removing purchased items with a lift truck or another powered vehicle must have a certificate of insurance with a \$2M General Liability policy, the policy must include a Worker's Compensation rider, and that certificate of insurance must be provided to the auctioneer for review and approval prior to the auction.

TERMS OF SALE
An 18% Buyer's Premium will be charged on all assets purchased by buyers providing full payment is made within 48 hours following the sale. Acceptable forms of payment are cashier's check, company check (with bank letter of guarantee) or wire transfer within 48 hours of the sale close. For any Buyers failing to pay within the 48 hour stated payment period, the Buyer's Premium will be increased to 20%. All invoices paid with a credit card are subject to a 20% Buyer's Premium. Everything will be sold to the highest bidder, in accordance with the Auctioneer's customary "Terms of Sale", copies of which will be posted on the Auctioneer's website and subject to additional terms announced the day of sale. All items are sold "As is, Where is" without any warranty, express or implied.

FURTHER INFORMATION
For auction inquiries, please contact Jennifer Reiner at 1+847-545-6374 or jennifer@perfectionindustrial.com.

SALE DATE
Tuesday, June 14, at 9:00 AM PDT

SALE LOCATION
2800 NW Front Ave., Portland, Oregon 97210

INSPECTION
Monday, June 13, by Appointment Only

Pre-Auction Offers Invited on Major Assets

Complete Catalog & Information Available at <https://perfection.global/sulzer>



PERFECTION Industrial Sales
ph +1-847-545-6374 • fax +1-847-427-8884
www.perfectionindustrial.com

In Conjunction With:



PRESTIGE AUCTIONS

Bidding Available Through

BidSpotter

ph +1-631-249-5566
www.prestigeequipment.com