



PERFECTION
Industrial Sales

LIVE WEBCAST AUCTION



HOFLER RAPID 1500 7-AXIS CNC PROFILE GEAR GRINDER

Assets Surplus to the
Continuing Operations of

SCHAFFER INDUSTRIES

Featuring:
Gear Grinders,
Gear Hobbers,
Gear Shapers,
Gear Shavers,
Hob Sharpeners,
Gear Hone,
CNC Machine Tools,
Tool Room Machinery,
Grinding, Forklift,
Cranes & More

**Plus Real Estate
Opportunity**



SAMPUTENSILI S250G CNC GEAR GRINDER



GLEASON 1000GMM SIGMA GEAR INSPECTION SYSTEM

Sale Date: Thursday, September 29, 2016 at 10:00 AM CDT
Sale Location: 5876 Sandy Hollow Road, Rockford, Illinois 61109
Inspection: Wednesday, September 28, 2016 from 9:00 AM–4:00 PM CDT, or By Special Appointment



PERFECTION
Industrial Sales

ph 847-545-6374 • fax 847-427-8884
www.perfectionindustrial.com

Online Bidding at www.perfectionindustrial.com

Sale is
Being Held
in Conjunction
With:



Phone:
847-673-0556

www.adamsmachinery.com

GEAR GRINDERS & GEAR HOBBERS



GLEASON TAG 400 CNC SPUR AND HELICAL GEAR GRINDER

GEAR GRINDERS

2003 HOFLER RAPID 1500 7-AXIS CNC PROFILE GEAR GRINDER, s/n 820, 3100mm Max. Workpiece Height Above Workpiece Table, 1500mm Grinding Stroke, 300mm Upper Edge of Workpiece Table, Grinding Wheel Width: 45mm, Speed of Grinding Spindle: 0–4,187 1/Min., Dressing Roll Diameter: 200mm, Grinding Stroke (With External Tothing): 1500mm, Table Load: 6000 kg, Number of Teeth: Unlimited, Profile Height: 41mm Max., Module (Dependent on the Tothing Data): Approx. 1–18mm Min.-Max., Helix Angle Left/Right: 45 Degrees Max.

2007 SAMPUTENSILI S250G CNC GEAR GRINDER, s/n 2326, Siemens Sinumerik CNC Control, 250mm Max. Workpiece Diameter w/Automatic Loading, 380mm Max. Workpiece w/Manual Loading, 8 Max. Module w/Forming Wheel, 550mm Max. Workpiece Height, 40/300mm Center Distance Workpiece–Spindle, +/- 45 Degree Swivel Angle Range, Workpiece Forwarder Loading/Conveyor System, w/Cemb ZB 20 Wheel Balancer System and Large Selection of Grinding Wheels (Located in South Bend, IN)

1999 GLEASON TAG 400 CNC SPUR AND HELICAL GEAR GRINDER, s/n 1053, 15.75" Max. Tip Diameter, .400" Min. Root Diameter, 8" Max. Face Width, 50–3 Diametral Pitch Range, .5–8 Modular Ranges, 6–600 Number of Teeth, 8–31.5" Distance Between Centers

1998 HOFLER HELIX 400 CNC GEAR GRINDER, s/n 600, 400mm Max. Gear Outside Diameter, 35mm Max. Profile Height, 260mm Max. Axial Stroke, 400mm Max. Grinding Wheel Diameter

1994 REISHAUER RZ301AS CNC GEAR GRINDER, s/n 71218, Reishauer CNC Control, 12.97" Max. Gear Diameter, 7 Max. DP

1982 REISHAUER RZ300E HIGH PRECISION GEAR GRINDER, s/n 5300-22, 11.8" Max. Tip Diameter, 39" Min. Root Diameter, 7.1" Max. Tooth Face, 16.5" Max. Chucking Length, 5.08" Max. Pitch, 5 Module



LIEBHERR L-652 5-AXIS CNC GEAR HOBBER



HOFLER HELIX 400 CNC GEAR GRINDER



REISHAUER RZ301AS CNC GEAR GRINDER



LIEBHERR LC255 CNC GEAR HOBBER



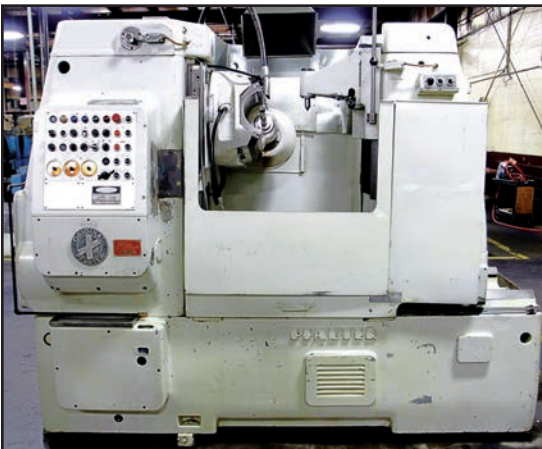
MITSUBISHI GC40 CNC GEAR HOBBER



CHONGQING MACHINE TOOL YKB3180 CNC GEAR HOBBER



CHONGQING MACHINE TOOL Y3150E GEAR HOBBER



PFAUTER P900 GEAR HOBBER

GEAR HOBBERS

LIEBHERR L-652 5-AXIS CNC GEAR HOBBER, s/n 1330-0607/11-0207, GE Fanuc Series 18i-M CNC Control, 25.59" Max. Gear Diameter, 19.69" Max. Gear Width; 10 Max. Module, 23.63" Table Diameter, 7.55" Max. Hob Diameter, 7.6" Max. Hob Length

1987 LIEBHERR LC255 CNC GEAR HOBBER, s/n 216/7, Liebherr CNC 2 Control, 10" Max. Work Diameter, 4 DP Max. Pitch, 10" Hob Slide Travel, 10" Work Diameter Table, 5.7" Max. Hob Diameter, 7.8" Max. Hob Length

1993 MITSUBISHI GC40CNC GEAR HOBBER, s/n 4113905

2011 CHONGQING MACHINE TOOL YKB3180 CNC GEAR HOBBER, s/n 004, Siemens CNC Control, 800mm Max. Work Diameter, 10mm Max. Module

2009 CHONGQING MACHINE TOOL YKB3180 CNC GEAR HOBBER, s/n 004, Siemens CNC Control, 800mm Max. Work Diameter, 10mm Max. Module

(2) 2011 CHONGQING MACHINE TOOL Y3150E GEAR HOBBERS, s/n 078 and 080, 500mm Max. Dia, 8mm Max. Module, Approx. 20" Table

PFAUTER P900 GEAR HOBBER, s/n 22811, 36" Max. Diameter of Workpiece, 2.5 DP Max, 19" Max. Axial Travel, 19.75" Face Capacity, 4-22" Distance Range from Workpiece to Hob, 7-3/8" Max. Diameter Hob, 27.5" Diameter Table

BARBER COLMAN 40-15 GEAR HOBBER, s/n 8700121290, 40" Swing, 21" Vertical Axis Travel, 20" Horizontal Axis Travel, 33" Diameter Table Trabon Lubricating System

BARBER COLMAN 25-15 GEAR HOBBER, s/n 7700083001, 24" Diameter Table, 50-300 RPM, Trabon Lube System

BARBER COLMAN 16-56 GEAR HOBBER, s/n 3111R

(2) BARBER COLMAN 16-36 GEAR HOBBER, s/n 2799 and 3581, 16" x 36" Capacity, Double Thread Worm Index, Change Gears

(2) BARBER COLMAN 16-16 GEAR HOBBERS, s/n 3470 and 3933

(2) BARBER COLMAN 16-10 GEAR HOBBERS, s/n 3700110420 and 3700110470

BARBER COLMAN 12-10 GEAR HOBBER, s/n 4700102320, 12" Table Diameter

ALSO AVAILABLE: LARGE SELECTION OF ASSORTED GEAR HOBBS



BARBER COLMAN 40-15 GEAR HOBBER



BARBER COLMAN 25-15 GEAR HOBBER



BARBER COLMAN 16-56 GEAR HOBBER



BARBER COLMAN 12-10 GEAR HOBBER



LARGE SELECTION OF GEAR HOBBS

View our current auction schedule at www.perfectionindustrial.com

GEAR SHAPERS, GEAR SHAVERS, HOB SHARPENERS & GEAR HONING



1996
CHANGJIANG Y5180A GEAR SHAPER

GEAR SHAPERS

1996 CHANGJIANG Y5180A GEAR SHAPER, s/n 008, 800mm Max. Work Diameter, 10mm Max. DP

BARBER COLMAN 18-04 GEAR SHAPER, s/n NA, 18" Max. Work Diameter, 4" Face, 4 DP

FELLOWS 725 GEAR SHAPER, s/n 23980, 7" Max. Pitch Diametral External, 5.5" Max. Pitch Diametral, Internal, 1.5" Max. Face Width External, 1" Max. Face Width Internal, 510–1,620 Strokes Per Min.

(2) **FELLOWS 36-TYPE GEAR SHAPERS**, s/n 28313-257 and 29801-454, 6" Face, 4" Spindle

FELLOWS 10-4 GEAR SHAPER, s/n 35008, 50–600 SPM, 14" Diameter Table, Mitsubishi CNC Control

(2) **FELLOWS 6-A TYPE GEAR SHAPERS**, s/n 19551 and NA, 18" Max. Diameter, 5" Max. Face, 1,025–2,300 RPM, 1620mm Stroke of Cutter, 1,440 Revolution of Cutter

GEAR SHAVERS

1991 MITSUBISHI FA30CNC 4-AXIS CNC GEAR SHAVER, s/n 61270C4, Mitsubishi CNC Control, 3.175 DP Max. Module, 5.90" Table Stroke, 1.18–11.81 IPM Table Feed Speed, 2" Max. Cutter Width, 12.20" Max. Gear Diameter, .0039–.0984 IPM Cutting Feed Speed, 40–400 RPM Cutter Rotary Speed, 9.44" Cutting Max. Diameter, 2.5" Cutter Inside Diameter, 25.59" Max. Distance Between Centers

2002 SICAT RASO 200 A6 CNC GEAR SHAVER, s/n 3850, Siemens Sinumerik CNC Control, 200mm Workpiece Outside Diameter, 0.5–5mm Module Range, 100mm Workpiece Face Width, 178/245mm Min./Max. Diameter of Shaving Cutter, 19/50.8mm Min./Max. Shaving Cutter Width, 110/202mm Min./Max. Center Distance Tool to Workpiece, 10–400 RPM Speed of Shaving Cutter

NATIONAL BROACH & MACHINE RED RING GEAR SHAVER, s/n GC1-1445, 12" Cutterhead, 8" x 36" T-Slotted Table

NATIONAL BROACH & MACHINE RED RING GEAR SHAVER, s/n GC1-2105, 9" Cutterhead, 7.5" x 35.5" Table



BARBER COLMAN 18-04
GEAR SHAPER



FELLOWS 10-4 GEAR SHAPER



2 AVAILABLE
FELLOWS 36-TYPE
GEAR SHAPER



MITSUBISHI FA30CNC 4-AXIS CNC GEAR
SHAVER



2002
SICAT RASO 200 A6 CNC GEAR SHAVER

HOB SHARPENERS

BARBER COLMAN 6-5 HOB SHARPENER, s/n 168, 6" Max. Work Diameter, 5" Max. Work Length, 7/8" Depth of Gash, 5.5–7" Grinding Wheel Diameter, 3,000 RPM

BARBER COLMAN 6-5R HOB SHARPENER, s/n NA, 6" Max. Work Diameter, 5" Max. Work Length; 7/8" Depth of Gash, 5.5–7" Grinding Wheel Diameter, 3,000 RPM

GEAR HONING

1998 FASSLER K-300 CNC GEAR HONING MACHINE, s/n 721, Num CNC Control



<
BARBER
COLMAN
6-5R HOB
SHARPENER



>
NATIONAL
BROACH &
MACHINE RED
RING GEAR
SHAVERS

**Sale Closing
From:
Thursday,
September 29,
2016 at
10:00 AM CDT**

To discuss your requirements for an auction, please call Perfection Industrial 847-545-6374

CNC MACHINE TOOLS, TOOL ROOM MACHINERY



FADAL 906 VMC 4020HT VERTICAL MACHINING CENTER



OKUMA & HOWA
MILLAC 6VA
CNC VERTICAL
MACHINING
CENTER



IKEGAI TT25 4-AXIS SLANT BED CNC LATHE

CNC MACHINE TOOLS

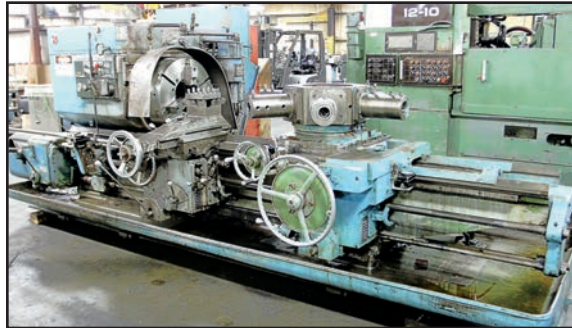
1998 FADAL 906 VMC 4020HT VERTICAL MACHINING CENTER, s/n 9805101, Fadal 88HS CNC Control, 40"X, 20"Y, 28"Z, Tsudakoma RNCX-251 4th Axis Rotary Table, 22 ATC, 40 Taper, 7,500 RPM Spindle Speed, 48" x 20" Table, 3,500 Lb Table Capacity, 900 IP Rapids X, Y, Z

OKUMA & HOWA MILLAC 6VA CNC VERTICAL MACHINING CENTER, s/n 66548, Fanuc CNC Control, Tsudakoma 4th Axis Rotary Table, 30 ATC, 70" x 21" Table, 4,400 Lb Table Capacity, 51"X, 25"Y, 22"Z, 472 IPM Rapid Traverse, 50 Taper, 30 ATC

IKEGAI TT25 4-AXIS SLANT BED CNC LATHE, s/n 51617V, Fanuc Series 15-TT CNC Control, 21" Swing x 60" Between Centers, 10" 3-Jaw Chuck, 12-Position Upper and Lower Turrets



CLAUSING COLCHESTER 17" ENGINE LATHE



WARNER & SWASEY 4A SERIES M-3550
SADDLE-TYPE TURRET LATHE



BRIDGEPORT 2 HP
MILLING MACHINE



GROB 4V-18
VERTICAL BANDSAW



MICROCUT 5000VS
VERTICAL MILLING MACHINE



MICROCUT 1050
VERTICAL MILLING MACHINE



MARVEL SPARTAN PA10
HORIZONTAL BANDSAW

TOOL ROOM MACHINERY

CLAUSING COLCHESTER 17" ENGINE LATHE, s/n NA, 20" Swing, 60" Between Centers, 12" 3-Jaw Chuck, 20-1,600 RPM, Tool Post, Magnescale DRO

WARNER & SWASEY 4A SERIES M-3550 SADDLE-TYPE TURRET LATHE, s/n 2669207, 6-Position Turret, 24" Diameter Chuck, Tool Post, 28.5" Swing, 59" Between Centers, 9.75" Spindle Hole, 16-395 Spindle RPM

WARNER & SWASEY 2A SERIES M-3470 SADDLE-TYPE TURRET LATHE, s/n 2853057, 6-Position Turret, 15" 3-Jaw Chuck, 20" Swing, 52" Between Centers, Sony LH52 DRO

BRIDGEPORT 2 HP MILLING MACHINE, s/n 236354, 9" x 48" Table, 90-4,200 RPM, Anilam Wizard DRO

MICROCUT 5000VS VERTICAL MILLING MACHINE, s/n 491006, 12" x 60" Power Feed Table, HP, Sony Millman DRO

MICROCUT 1050 VERTICAL MILLING MACHINE, s/n 94548, 10" x 50" Servo Feed Table, 3 HP, 60-4,200 RPM, Sony Millman DRO

MARVEL SPARTAN PA10 HORIZONTAL BANDSAW, s/n DPA100470, 8" x 12" Capacity (Rectangle), 10" Diameter Capacity (Round), 12" Max. Vise Opening, 70-278 SFPM Blade Speed, 0-300 Lb Blade Force, 5,600 Lb Max. Load Capacity, 16" Max. Single Stroke Shuttle Travel, 144" Multiple Stroke

KALAMAZOO 8CW HORIZONTAL BANDSAW, s/n 1978663, 16" Flat Capacity, 8" Round Capacity, 50, 95, 160, 275 FPM Speeds, w/Feed Conveyor

GROB 4V-18 VERTICAL BANDSAW, s/n 2758

SCHAUER VA2B SPEED LATHE, s/n 34902, 10" 3-Jaw Chuck, 100-1,100 RPM

DAKE 2 1/2 ARBOR PRESS

CLAUSING VERTICAL MILLING MACHINE, s/n NA, 6" x 24" Table, 180-3,250 RPM Spindle Speed, 1/2 HP

View our current auction schedule at
www.perfectionindustrial.com

GRINDING & INSPECTION



OKAMOTO ACC 20-24DX WET-TYPE SURFACE GRINDER



CINCINNATI MILACRON/HEALD 2EF73 SIZEMATIC INTERNAL GRINDER



KO LEE 6 X 12 SURFACE GRINDER



HEALD 272 PLAIN INTERNAL GRINDER



KO LEE 032.033 TOOL AND CUTTER GRINDER

To discuss your requirements for an auction, please call
Perfection Industrial
847-545-6374

View our current auction schedule at
perfectionindustrial.com

GRINDING

OKAMOTO ACC 20-24DX WET-TYPE SURFACE GRINDER, s/n 27204

1981 OKAMOTO IGM-3U CONVENTIONAL GRINDER, s/n 110, 24" Max. Swing, 20" Max. Table Travel, 16" Max. Grinding Stroke, 50–500 RPM Spindle Speed

CINCINNATI MILACRON/HEALD 2EF73 SIZEMATIC INTERNAL GRINDER, s/n 48627, 23.5" Max. Swing Over Table, 3/16-16" Grinding Stroke, 20" Table Longitudinal Travel, 0–500 RPM Workhead Spindle Speed

HEALD 361 ROTARY SURFACE GRINDER, s/n NA, 24" Chuck Diameter, 28" Swing, 1,200 Lb Max. Chuck Load, 12" Max. Grinding Stroke, 16" Table Travel

HEALD 272 PLAIN INTERNAL GRINDER, s/n WD7141, 18" Max. Swing, 30.25" Table Longitudinal Travel, 60 Degree Max. Grinding Angle, 133–400 RPM Workhead Speed, 12,500 RPM Internal Grinding Spindle Speed, 0–15 FPM Infinite Grinding Table Speed

BOYAR-SHULTZ H612 HANDFEED SURFACE GRINDER, s/n 26150, 6" x 12" Magnetic Chuck

KO LEE B6060H535 TOOL AND CUTTER GRINDER, s/n 27.267, Size 2, 12" Swing

KO LEE 032.033 TOOL AND CUTTER GRINDER, s/n 6007-3-97, Leematic 2000

KO LEE S612 SURFACE GRINDER, s/n 15292DF, 6" x 12" Magnetic Chuck

KO LEE 6" X 12" SURFACE GRINDER, s/n 25642WM



< HEALD 361
ROTARY
SURFACE GRINDER

INSPECTION

2009 GLEASON 1000GMM SIGMA GEAR INSPECTION SYSTEM, s/n 6514, CE Marked

RAMS 10A-R HARDNESS TESTER

ROCKWELL WILSON 4JR HARDNESS TESTER

PRYOR MARKTRONIC MULTIDOT 2068 MARKING MACHINE

48" X 60" X 12" THICK GRANITE SURFACE PLATE

Sale Closing From: Thursday, September 29, 2016 at 10:00 AM CDT

Sale Location: 5876 Sandy Hollow Road, Rockford, Illinois 61109

Inspection: Wednesday, September 28, 2016 from 9:00 AM–4:00 PM CDT, or By Special Appointment



**PERFECTION
Industrial Sales**

Perfection Industrial Sales
ph 847-545-6374 • fax 847-427-8884
www.perfectionindustrial.com

Online Bidding at
www.perfectionindustrial.com

FORKLIFT & CRANES



NISSAN MCPL02A25LV LP FORKLIFT

FORKLIFT & CRANES

5,000 LB NISSAN MCPL02A25LV LP FORKLIFT, s/n CPL02-9P7499, Triple-Mast, Side Shift, Solid Tire, Overhead Protection

5-TON NICS FREE-STANDING BRIDGE CRANE SYSTEM, w/R&M 5-Ton Electric Hoist w/Pendant Control, 25'6" Span x 45' Runway, 17' Under Rail

2-TON ABELL HOWE FREE-STANDING JIB CRANE, w/Stahl Electric Hoist w/Pendant Control, 16'H x 11' Arm

1-TON ABELL HOWE FREE-STANDING JIB CRANE, w/Pneumatic Hoist, 13'H x 11' Arm (13)

1-TON CONTRX CRANES FREE-STANDING JIB CRANE, w/Stahl ST10 Electric Hoist w/Pendant Control, 11'H x 13' Arm



NICS FREE-STANDING BRIDGE CRANE SYSTEM

1-TON FREE-STANDING JIB CRANE, w/Yale 1-Ton Electric Hoist w/Pendant Control, 13'H x 13' Arm

1,500 LB ABELL HOWE FREE-STANDING JIB CRANE, w/1-Ton CM Lodestar Electric Hoist w/Pendant Control, 11'H x 13' Arm

1/2-TON FREE-STANDING JIB CRANE, w/1/2-Ton Budgit Electric Hoist w/Pendant Control, 9'H x 15' Arm

1/2-TON SWIVEL JIB, w/R&H Loadmate LM05 Electric Hoist w/Pendant Control, 14'H x 13' Arm

1/2-TON GIRDER-MOUNTED JIB CRANE, w/Budgit 1/2-Ton Electric Hoist w/Pendant Control, 12' Arm

1,500 LB ABELL HOWE GIRDER-MOUNTED JIB CRANE, w/Budgit 1/2-Ton Electric Host w/Pendant Control, 16' Arm Length

750 LB SWIVEL JIB CRANE, w/1/2-Ton Budgit Electric Hoist w/Pendant Control, 13'H x 128" Arm (17)

1/4-TON CONTRX CRANES FREE-STANDING JIB CRANE, w/Chain Fall, 12' x 12'

1/4-TON ABELL HOWE GIRDER-MOUNTED JIB CRANE, w/Dayton 500 Lb Electric Hoist, 11' Arm (2)

1/4-TON GIRDER-MOUNTED JIB CRANE, w/1/4-Ton CM Lodestar Electric Hoist w/Pendant Control, 20' Arm

ABELL HOWE FREE-STANDING JIB CRANE, w/Chain Fall, 10' x 10' (4) Approx. 1/4-Ton

1,500 LB ABELL HOWE GIRDER-MOUNTED JIB CRANE, No Hoist, 16' Arm

1-TON BUDGIT ELECTRIC HOIST

ALSO AVAILABLE: PEDESTAL GRINDERS, BUFFERS, WORK BENCHES, VISES, STEEL STORAGE SYSTEMS HEAVY-DUTY STOCK RACKS, PALLET RACKING, OFFICE FURNITURE AND MORE



GORBEL FREE-STANDING CRANE SYSTEM



James E. Patrick – Dickerson Nieman Commercial
M: (815) 494-9876 – O: (815) 381-1114
jpatrick@dickersonnieman.com

REAL ESTATE OPPORTUNITY

Highlights:

Building Size:
40,337 Sq. Ft.
Loading: 1 Dock, 1 Door
Office Area: 6,000 Sq. Ft.
Year Built: 1984
Ceiling: 20 ft.
30-Ton Bridge Crane,
All Air Conditioned,
Large Parking Lot,
New Lighting, Bus Bars
Gross Land Area:
6.04 Acres





PERFECTION Industrial Sales

Perfection Industrial Sales – 2550 Arthur Ave., Elk Grove Village, IL 60007

Phone: +1 (847) 545-6374 – Fax: +1 (847) 427-8884

www.perfectionindustrial.com

Illinois Auction License #444.000438 & #441.001779



Presorted
First Class Mail
U.S. Postage
PAID
Eugene, Oregon
Permit No. 17

**Featuring: Gear Grinders, Gear Hobbers, Gear Shapers, Gear Shavers,
Hob Sharpeners, Gear Hone, CNC Machine Tools, Tool Room Machinery,
Grinding, Forklift, Cranes & More – Plus Real Estate Opportunity**

LIVE WEBCAST AUCTION

Sale Closing From: Thurs., Sept. 29, 2016 at 10:00 AM CDT Inspection: Wed., Sept. 28, 2016 from 9:00 AM–4:00 PM CDT, or By Special Appointment

Assets Surplus to the Continuing Operations of

SCHAFFER INDUSTRIES



HOFLER RAPID 1500 7-AXIS CNC PROFILE GEAR GRINDER

**Featuring: Gear Grinders, Gear Hobbers, Gear Shapers, Gear Shavers,
Hob Sharpeners, Gear Hone, CNC Machine Tools, Tool Room Machinery,
Grinding, Forklift, Cranes & More – Plus Real Estate Opportunity**

LIVE WEBCAST AUCTION

AIRPORTS

Chicago O'Hare International Airport (ORD, 66 miles away)

Chicago Rockford International Airport (RFD, 8 miles away)

HOTELS

Holiday Inn (815) 398-2200

7550 East State Street, Rockford, Illinois 61108

Hilton Garden Inn Rockford..... (815) 229-3322

7675 Walton Street, Rockford, Illinois 61108

Courtyard Rockford..... (815) 397-6222

7676 East State Street, Rockford, Illinois 61108

TERMS OF SALE

A 15% buyer's premium will be charged on all assets purchased by buyers attending the sale in person, and any Webcast or Online Buyers will be charged an 18% buyer's premium. Acceptable forms of payment are cash (but only on sale day), cashier's check, company check (with bank letter of guarantee) or wire transfer within 48 hours of the sale close. For any Buyers failing to pay

within the 48 hour stated payment period, the buyer's premium will be increased to 18% (bidders attending the Auction in person) or 21% (Webcast or Online Bidders). Everything will be sold to the highest bidder, in accordance with the Auctioneer's customary "Terms of Sale", copies of which will be posted on the premises of the sale and subject to additional terms announced the day of sale. All items are sold "As is, Where is" without any warranties expressed or implied.

PAYMENT

ALL LIVE AUCTION PURCHASES MUST BE PAID IN FULL NO LATER THAN MONDAY, OCTOBER 3. If you intend to pay by wire transfer, we will accept payment the day after the sale ONLY IF a deposit of 25% of the total purchases is made on the day of the sale. Contact our office for wire instructions. Only cash, wire transfer or certified check, payable to Perfection Industrial Sales will be accepted. Company checks payable to Perfection Industrial Sales will be accepted only if accompanied by a bank letter of guarantee. All sales are subject to sales tax. Purchasers claiming exemptions from taxes must provide proof satisfactory to the Auctioneer of their entitlement to claim such exemptions.

REMOVAL

All small items must be removed by Tuesday, October 4, 2016. All major items must be removed by Friday, October 14, 2016. Removal hours are Monday through Friday from 8:00 AM–4:00 PM. Extended hours and weekends may be accommodated by prior appointment. No assets may be removed during the auction sale.

FOR FURTHER INFORMATION

For further information contact Jennifer Reiner at (847) 545-6374 or jennifer@perfectionindustrial.com. For accounting and invoicing questions, contact Inesa Dicipetris at (847) 427-3333 or inesa@perfectionindustrial.com.

Real Estate Opportunity

Sale Date: Thursday, September 29, 2016 at 10:00 AM CDT

Sale Location: 5876 Sandy Hollow Road, Rockford, Illinois 61109

Inspection: Wednesday, September 28, 2016 from 9:00 AM–4:00 PM CDT, or By Special Appointment



**PERFECTION
Industrial Sales**

ph 847-545-6374 • fax 847-427-8884

www.perfectionindustrial.com

Online Bidding at www.perfectionindustrial.com

Sale is
Being Held
in Conjunction
With:

Phone:
847-673-0556

www.adamsmachinery.com

