

LIVE WEBCAST ^{ONLINE ONLY} AUCTION



Rubicon Technology Consolidation -
Sapphire Manufacturer & Supplier for
Optical and Industrial Applications

SALE DATE

Tuesday, July 25, at 10:00 AM CT

SALE LOCATION

900 East Green St., Bensenville, IL 60106

INSPECTION

Monday, July 24, from 9 AM to 4 PM CT,
by appointment only

**PRE-AUCTION
OFFERS INVITED
ON MAJOR ASSETS**

COMPLETE CATALOG & INFORMATION:

<https://perfection.global/rubicon>



HAAS VF-3YT/50 VERTICAL MACHINING CENTERS



CENTORR VACUUM INDUSTRIES "LARGE AREA NET-SHAPE CRYSTAL EXTRACTION" GROWTH FURNACE

FEATURING: CENTORR VACUUM INDUSTRIES Crystal Growth Vacuum Furnace, Sapphire Growth Furnaces, Sapphire Boules, Sapphire Window Inventory, Sapphire Raw Material & WIP Inventory, (2) 2013 HAAS VF-3YT/50 VMC's, 2012 & 2008 SUPERTEC Cylindrical Grinders, Machine Tools, 2007 CAT 550kW Generator Set, Forklifts & Plant Support



**PERFECTION
Industrial Sales**

Perfection Industrial Sales IL Firm Lic. #444.000438, Steve Kleba IL Auctioneer Lic. #441.001778

Perfection Industrial Sales

ph +1-847-545-6374 • fax +1-847-427-8884

www.perfectionindustrial.com

Bidding Available Through
BidSpotter

"LANCE" CRYSTAL GROWTH FURNACE, GROWTH FURNACES

2013

"LANCE" CRYSTAL GROWTH FURNACE

2013 CENTORR VACUUM INDUSTRIES "LARGE AREA NET-SHAPE CRYSTAL EXTRACTION" GROWTH FURNACE, s/n 20841, 158 kg A-Plane Sapphire Single Crystals, 1500mm L, 463mm W, 66mm Thick, 460V, 110 GOM Min Water Flow, 25P SIG Max Water Pressure, 70-80 PSIG Air Pressure, 28 kW, Dual Heat Zones, WARNER POWER 600 kW SCR Controlled 4-Zone Power Supply, Yokogawa PLC w/ELO Touch Screen Control, Technical Documentation Transfer, Process Info, and Drawings are Available



CENTORR VACUUM INDUSTRIES "LARGE AREA NET-SHAPE CRYSTAL EXTRACTION" GROWTH FURNACE

GROWTH FURNACES

(2) 190 KG KYROPOULOS GROWTH FURNACES, w/ WARNER 218 KW SCR Controlled DC Power Supply, 29-Day Process Cycle, 99.996% Crystal Purity, 26 GPM Flow Rate, 14.8 PSI Pressure Average, Produces 190 kg Monocrystalline Sapphire Boules, (Crucible, Cell and Screen Not Included)

(24) 83 KG KYROPOULOS GROWTH FURNACES, w/ WARNER 135 KW SCR Controlled DC Power Supply, 16-Day Process Cycle, 99.996% Crystal Purity, 22 GPM Flow Rate, 14.2 PSI Pressure Average, Produces 83 kg Monocrystalline Sapphire Boules, (Crucible, Cell and Screen Not Included)

(14) 35 KG KYROPOULOS GROWTH FURNACES, w/ WARNER 110 KW SCR Controlled DC Power Supply, 8-Day Process Cycle, 99.996% Crystal Purity, 18.6 GPM Flow Rate, 13.6 PSI Pressure Average, Produces 35 KG Monocrystalline Sapphire Boules, (Crucible, Cell and Screen Not Included)



24 AVAILABLE

83 KG KYROPOULOS METHOD GROWTH FURNACES



2 AVAILABLE

190 KG KYROPOULOS METHOD GROWTH FURNACE



14 AVAILABLE

35 KG KYROPOULOS METHOD GROWTH FURNACES

For auction inquiries, please contact Jennifer Reiner at (847) 545-6374 or jennifer@perfectionindustrial.com

SAPPHIRE BOULES & POLISHING MACHINERY

SAPPHIRE BOULES & POLISHING MACHINERY

ALVORD SYSTEMS DO120-SZ56 PIEZOGONIOMETER, s/n D0120-SZ56

ALVORD SYSTEMS XFL BOULE X-RAY SYSTEM, s/n G1212, Dual Head

2001 TSK EP-2600 EDGE GRINDER, s/n EP-261288, 2-6" Wafer Capacity

(2) 2014 & 2012 ATA SAPHIR 320 GRINDER POLISHERS, s/n 19340, 16587

KEMET HT56 LAPPING MACHINE, s/n HT56-1003

BICO 6" X 11" JAW CRUSHER, s/n 73082

AMANO PIE-15M DUST COLLECTOR, s/n 15181

(2) 2010 METRO C5 3 SERIES HOLDING/PROOFING CABINETS

(4) VULCAN 3-1750 FURNACES

BRANSON OMNI-1620-40 AQUEOUS CLEANING SYSTEM, s/n 02-5699-11

BRANSON OMNI-1620 AQUEOUS CLEANING SYSTEM, s/n 01-1608-10



TSK EP-2600 EDGE GRINDER



(1 OF 2) ATA SAPHIR 320 GRINDER POLISHER



KEMET HT56 LAPPING MACHINE



ALVORD SYSTEMS DO120-SZ56 PIEZOGONIOMETER



ALVORD SYSTEMS XFL BOULE X-RAY SYSTEM



2 AVAILABLE
2010 METRO C5 3 SERIES HOLDING/PROOFING CABINET



BICO 6" X 11" JAW CRUSHER



BRANSON OMNI-1620-40 AQUEOUS CLEANING SYSTEM

HUGE AMOUNT OF INVENTORY INCLUDING SAPPHIRE CRYSTAL CORES, BOULES, SASOL, DALIAN, AND THERMAL SHOCK



HUGE QTY OF SAPPHIRE BOULES, MATERIALS & INVENTORY



VERTICAL MACHINING CENTERS, MACHINE TOOLS

VERTICAL MACHINING CENTERS

(2) 2013 HAAS VF-3YT/50 VERTICAL MACHINING CENTERS, s/n 1106023 & 1106020, Haas Control, X-40", Y-26", Z-25", 30-ATC, CAT 50 Spindle Taper, 7500 RPM, 23" x 52" Table, 4,000 Lb Max Table Load, 30 HP

MACHINE TOOLS

2012 SUPERTEC G50P-60NC UNIVERSAL CYLINDRICAL GRINDER, s/n GC12027, 19.6" Swing, 24" Centers, 18.9" Max Grinding Diameters, 330 Lb Max Load Between Centers

2008 SUPERTEC G38P-60NC UNIVERSAL CYLINDRICAL GRINDER, s/n GC08009, 15" Swing, 24" Centers, 14" Max Grinding Diameter, 330 Lb Max Load Between Centers

(2) 2009 & 2008 KENT KGS-84AHD AUTOMATIC PRECISION SURFACE GRINDERS, s/n 086804, 086801, 15.75" x 31.5" Magnetic Chuck, 36" x 17.75" Max Travel, 23.625" Max Distance Spindle To Table, Coolant w/ Filter System

2008 TAKATORI MWS-812SD DOWN CUT MULTI WIRE SAW, s/n 1003, 3-Spindle, 12' Slicing Length, 8" Max Diameter, Slurry Chiller, Direct Drive Wire Control, Automatic Wire Winding

2008 TAKATORI MWS-612SD DOWN CUT MULTI WIRE SAW, s/n 1089, 2-Spindle, 12" Slicing Length, 6" Max Diameter, Slurry Chiller, Direct Drive Wire Control, Automatic Wire Winding

2008 DO-ALL 2013-V3 VERTICAL BANDSAW, s/n 572-08284, 26" x 26" Table, 20" Throat, 154" Band Length

ALSO: WILTON 20VS 2232AC Drill Press, s/n 8010451, 65-2000 RPM, 14-3/4" x 18" Table, SHOP FOX Drill Press, 8" x 29" Table, 120-2580 RPM, JET Base, KALAMAZOO 30" Chop Saw, 6" Vise, Enclosure, SCOTCHMAN CP0350 Cold Saw w/ Graymills Coolant, DAKE 25H H-Frame Press, s/n 191693, BALDOR 1022HD Pedestal Grinder, 1 HP, Table w/ Mounted WESTWARD 10" 5-Speed Drill Press and WESTWARD Bench Grinder, (2) DONALDSON TORIT DB-800 Downdraft Tables, 1.5 HP, 27" x 26" Working Area



(1 OF 2) HAAS VF-3YT/50 VERTICAL MACHINING CENTER



(1 OF 2) HAAS VF-3YT/50 VERTICAL MACHINING CENTER



SUPERTEC G50P-60NC UNIVERSAL CYLINDRICAL GRINDER



DO-ALL 2013-V3 VERTICAL BANDSAW



TAKATORI MWS-812SD DOWN CUT MULTI WIRE SAW



TAKATORI MWS-612SD DOWN CUT MULTI WIRE SAW



SUPERTEC G38P-60NC UNIVERSAL CYLINDRICAL GRINDER



(1 OF 2) KENT KGS-84AHD AUTOMATIC PRECISION SURFACE GRINDERS



WILTON 20VS 2232AC DRILL PRESS



KALAMAZOO 30" CHOP SAW

FORKLIFTS, PLANT SUPPORT

FORKLIFTS

NISSAN CPJ02A25V 5,000 LB LP FORKLIFT, s/n CPJ2-95463, 3-Stage Mast, Side Shift

RAYMOND 7400 R45TT 4,500 LB STANDUP ELECTRIC REACH TRUCK, s/n 740-04-CA01118, 301" Lift Height, 3-Stage, Built-In Scale

PLANT SUPPORT

2007 CATERPILLAR C18 GENERATOR SET, s/n G7A01929, 688 kVA, 550 KW

SULLAIR 3709/A ROTARY SCREW AIR COMPRESSOR, s/n 200610260124, 40 HP, 125/135 PSIG

INGERSOLL RAND SSR-UP6-25-125 AIR COMPRESSOR, s/n PX1534U03127, 25 HP 125 PSIG, Mounted on Approx.100 Gallon Air Tank

2005 INGERSOLL RAND TS150 AIR DRYER, s/n DR10016130-020205, 175 PSIG Max Air Pressure, Air Cooled, R407C Refrigerant

INGERSOLL RAND IRN7.5H-CC-115H AIR COMPRESSOR, s/n na, 7.5 HP, 31 CFM, 115 PSIG Rated Pressure, 125 PSIG Max Pressure, 3600 RPM Motor Speed

US CENTRIFUGE SYSTEMS A540 AUTOMATIC CENTRIFUGE SYSTEM, s/n W1032, 40 Liter Bowl Volume, 3 Gallon Solids Holding Capacity, 6 Cycles Per Hour

WATER SYSTEM Featuring POLARIS S100IS353 Heat Exchanger, ALFA LAVAL MX25-BFG Heat Exchanger, (3) 100 HP Motors, (5) 75 HP Motors, Pumps, (6) 300-Line Control, w/ (4) **EVAPCO AT212-428 Chiller Systems**



NISSAN CPJ02A25V LP FORKLIFT



RAYMOND 7400 R45TT ELECTRIC REACH TRUCK



CATERPILLAR C18 GENERATOR SET



SULLAIR AIR COMPRESSOR & IR AIR DRYER



INGERSOLL RAND SSR-UP6-25-125 AIR COMPRESSOR



INGERSOLL RAND IRN7.5H-CC-115H AIR COMPRESSOR



US CENTRIFUGE SYSTEMS A540 AUTOMATIC CENTRIFUGE SYSTEM



WATER SYSTEM



EVAPCO AT212-428 COOLING TOWER

PLANT SUPPORT

PLANT SUPPORT CON'T

ALSO: OVER (500) Metal Bond Diamond Core Drills, CAT 50 Tool Holders, (NEW) **WINTER** D46 BZ366 E C 75 Diamond Grinding Wheels, Sine Plates, Vises, (50) **ADIXEN** Vacuum Pumps, (6) **CONTRX** and **HSI** 1 and 2 Ton Rolling Gantries, Forklift Extension, Rigging Skates, Fork Extensions, Fork Boom Attachment, Rolling Tool Chests, Ladders, Hand and Power Tools, Pallet Jacks, Lift Carts, **FACTORY CAT** Mini-Mag 20-D Floor Scrubber, s/n 59229, w/ Quick Charge Battery Charger, **2020 JOHN DEERE** E130 Lawn Tractor, w/ Briggs & Stratton 22 HP V-Twin 724 CC Engine, **ARIENS** Sno-Tek 24" Snow Blower, w/ 208CC Engine, **HONDA** GCV160 Easy Start Lawn Mower, Twin Blade, Bearings, Electronics, Vacuum Gages, Circuit Boards, AC Power Supply's, Terminal Blocks, UPS's, Frequency Drives, Touch Panels, Electric and Servo Motors, Shop Cabinets, Stainless Steel Tables, Office Furniture and More

HUGE AMOUNT OF INVENTORY: Sapphire Crystal Cores, Boules, Sasol, Dalian, and Thermal Shock



METAL BOND DIAMOND CORE DRILLS



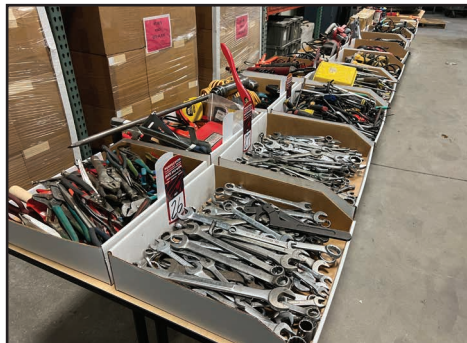
ASSORTED TOOLING



ADIXEN VACUUM PUMPS



GRINDING WHEELS



POWER & HAND TOOLS



ASSORTED ELECTRONICS

For auction inquiries, please contact Jennifer Reiner at
(847) 545-6374 or jennifer@perfectionindustrial.com

Bidding Available Through
BidSpotter

View our current auction schedule at www.perfectionindustrial.com

SALE DATE

Tuesday, July 25, at 10:00 AM CT

SALE LOCATION

900 East Green St.
Bensenville, IL 60106

INSPECTION

Monday, July 24, from 9 AM
to 4 PM CT, by appointment only

REMOVAL

All items must be removed no later than Friday, August 18. All removal is strictly on an appointment only basis. Anyone removing purchased items with a lift truck or another powered vehicle must have a certificate of insurance with a \$2M General Liability policy, the policy must include a Worker's Compensation rider, and that certificate of insurance must be provided to the auctioneer for review and approval prior to the auction.

TERMS OF SALE

An 18% Buyer's Premium will be charged on all assets purchased by buyers providing full payment is made within 48 hours following the sale. Acceptable forms of payment are cashier's check, company check (with bank letter of guarantee) or wire transfer within 48 hours of the sale close. For any Buyers failing to pay within the 48 hour stated payment period, the Buyer's Premium will be increased to 20%. All invoices paid with a credit card are subject to a 20% Buyer's Premium. Everything will be sold to the highest bidder, in accordance with the Auctioneer's customary "Terms of Sale", copies of which will be posted on Bidspotter.com and Perfection Industrial Sales' website and subject to additional terms announced the day of sale. All items are sold "As is, Where is" without any warranty, express or implied. No payments will be taken on-site.

FURTHER INFORMATION

For auction inquiries, please contact Jennifer Reiner at (847) 545-6374 or jennifer@perfectionindustrial.com.

AUCTION LICENSE

Perfection Industrial Sales IL Firm Lic. #444.000438, Steve Kleba IL Auctioneer Lic. #441.001778

To discuss your requirements for an auction, please call Perfection Industrial +1-847-545-6374