

Complete Multi-Million Dollar State-of-the-Art Heat Treat System

*Purchase the Entire System
or Individual Components*



Elgin, Illinois

New 2008 - 2010

Sale Offered in Partnership with



www.perfectionindustrial.com



Hilco Industrial

Phone +1 248-254-9999

www.hilcoind.com



A Hilco Global Company
Vested in Your Success

The Heat Treat System Can Be Purchased:

- *In its Entirety to be Operated In Place (with Lease Option)*
- *In its Entirety for Removal / Relocation*
- *Or By Individual Component*

Contact John Magnuson at 847-504-3204, Email jmagnuson@hilcoglobal.com



SHOT BLAST • PLANT SUPPORT



SHOT BLAST MACHINE

- 1 – WHEELABRATOR MODEL ROTO-JET HB 20/30-5.4-4/15 SHOT BLAST MACHINE (2010), Max Workpiece Size: 2000mm Diameter x 3000mm High x 6000-kG, Blast Media: Round Steel Shot, Abrasive Throwing Speed: 75 m/s (Approx.), with Schlick Type A 40/12 Air-Shoc Cartridge Filter Unit, In Floor Abrasive Collection Hopper, Bucket Elevator, Abrasive Reclamation Unit and Silo, Abrasive Control Units, (4) Roto-Jet Type 5.4 Double Disk Turbines, Motorized Part Loading System Mounted on Free-Standing "T" Shaped Overhead Monorail Track with (2) Carrier Hooks, PLC

FACILITY & SUPPORT EQUIPMENT

- 1 – EVAPCO PROCESS WATER COOLING TOWER with (2) SBS Heat Exchangers (2010)
 1 – CATERPILLAR MODEL C9 200-kW DIESEL BACK-UP GENERATOR
 1 – INCOMING POWER: (2) 4000-Amp Transformers
 2 – DEMAG 16-TON X 75'9" SPAN DOUBLE GIRDER BRIDGE CRANES
 1 – 28,735-SQUARE FOOT FACILITY – Lease Option Available
 2 – METROLOGY LABS – No Equipment Included



COMPLETE HEAT TREAT SYSTEM



**Purchase the Entire System
or Individual Components**

HEAT TREAT SYSTEM

2 – AICHELIN-IHU SIZE 200/250 ELECTRIC VERTICAL PIT CARBURIZING FURNACES, S/Ns 04.17444 (R09019-2 & R09019-1) (Both 2010), Max Temperature: 1800°F, Working Temperature Range: 1400° to 1750°F, Max Gross Load per Tray: 33,000-Lbs., Effective Load Size: 78"D x 98"H, (4) Heating Zones, (12) Heaters, Rod Over Bend Heating, Connected Heating Load: 400-kW, Overall Dimensions: 148"D x 210"H, with Frey Carbomaster Process Controls and Protherm 500 Furnace Control, Retort, Cover Lifting and Swiveling Unit, Gas Recirculation Fan, Rapid Cooling System for Internal Cooling of Retort and Load, Sample/Flush/Pressure Probes, Pressure Regulator, Buhler EGK12 Sample Gas Cooler, Buhler Gas Extraction Sensor, MMI Carbonseer Zirconia Carbon Sensor, Siemens PLC's, 480V/60Hz

3 – AICHELIN-IHU SIZE 160/250 ELECTRIC VERTICAL PIT CARBURIZING FURNACES, S/Ns 04.17444 (R09019-3), 04.17444, 04.18199 (To 2011), Max Temperature: 1800°F, Working Temperature Range: 1400° to 1750°F, Max Gross Load per Tray: 22,000-Lbs., Effective Load Size: 63"D x 98"H, (4) Heating Zones, (12) Heaters, Rod Over Bend Heating, Connected Heating Load: 320-kW, Overall Dimensions: 132"D x 210"H, with Frey Carbomaster Process Controls and Protherm 500 Furnace Control, Retort, Cover Lifting and Swiveling Unit, Gas Recirculation Fan, Rapid Cooling System for Internal Cooling of Retort and Load, Sample/Flush/Pressure Probes, Pressure Regulator, Buhler EGK12 Sample Gas Cooler, Buhler Gas Extraction Sensor, MMI Carbonseer Zirconia Carbon Sensor, Siemens PLC's 480V/60Hz

2 – AICHELIN-IHU ELECTRIC VERTICAL PIT CARBURIZING FURNACES, Size 120/250, S/N 04.17444 (R09019-4) (2010) and Size 120/200, S/N 04.16870/1 (2009), Max Temperature: 1800°F, Working Temperature Range: 1400° to 1750°F, Max Gross Load per Tray: 17,500-Lbs., Effective Load Size: 47"D x 98"H, (3) Heating Zones, (9) Heaters, Rod Over Bend Heating, Connected Heating Load: 270-kW, Overall Dimensions: 116"D x 210"H, with Frey Carbomaster Process Controls and Protherm 500 Furnace Control, Retort, Cover Lifting and Swiveling Unit, Gas Recirculation Fan, Rapid Cooling System for Internal Cooling of Retort and Load, Sample/Flush/Pressure Probes, Pressure Regulator, Buhler EGK12 Sample Gas Cooler, Buhler Gas Extraction Sensor, MMI Carbonseer Zirconia Carbon Sensor, Siemens PLC's, 480V/60Hz

3 – AICHELIN SIZE 200/250 ELECTRIC VERTICAL PIT TEMPERING FURNACES, S/Ns R09019-8, R09019-7, R07018-2 (All 2010), Max Temperature: 850°F, Working Temp Range: 700° to 840°F, (4) Temperature Control Zones, Max Gross Load per Tray: 33,000-Lbs., Effective Load Size: 78"D x 98"H, (9) Heaters, Rod Over Bend Type, (3) 60-kW Heating Zones, Overall Dimensions: 130"D x 210"H, with Retort Cover Lifting Unit, Gas Recirculation Fan, Airtech Electrostatic Filter, 480V/60Hz

2 – AICHELIN SIZE 200/250 VERTICAL PIT OIL QUENCH TANKS, S/Ns R09019-5, R09019-6 (Both 2010), Max Quench Temperature: 350°F, Working Temperature Range: 200° to 325°F, Max Safe Oil Temp: 440°F, Tank Volume (Approx): 16,642-Gallons (63,000-Liters), Effective Load Size: 78"D x 98"H, Max Gross Load per Tray: 33,000-Lbs., Connected Heating Load: 160-kW, (2) Heating Zones, Overall Dimensions: 200"W x 220"L x 230"H, with (8) 20-kW Immersion Heaters, (4) 10-HP Agitators, Heat Exchanger, Motorized Cover Lift, Impeller Driven Quench Media System, Oil Vapor Exhaust Openings, CO2 Ring with Nozzles, (2) Oil Recirculation Pumps, Siemens Controls, 480V/60Hz

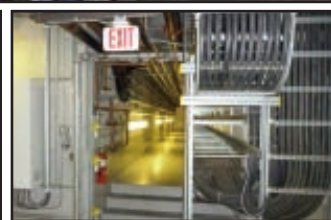
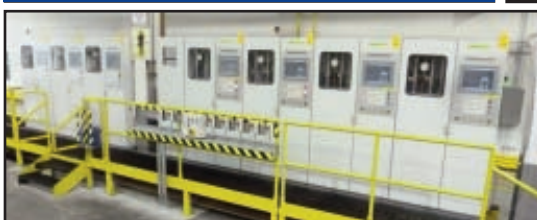
1 – AICHELIN SIZE 200/250 VERTICAL PIT POST WASHER, S/N R09019-9 (2010), Wash Fluid: Water, Contained Fluid: 5,283-Gallons, Max Operating Temp: 150°F, Temp Working Range: 33° to 120°F, Spray Pump: 25-HP (412-GPM), (1) Temperature Control Zone, Effective Load Size: 78"D x 98"H, Gross Load per Tray: 33,000-Lbs., Overall Dimensions: 126"W x 176"L x 188"H, with (6) Spray Rinse Zones with 76-Nozzles, SmartSkin Oil Skimmer, (2) Heat Exchangers, Tank Level Indicators, Carbon Steel Construction, Motorized Cover Lift, 480V/60Hz

QUANTITY OF Approximately 16,000-Gallons of Petrofer Type Marquench 875 Special Quench Oil (In Service Date September 2013)

QUANTITY OF Approximately 16,000-Gallons of Houghton Type Mar-Temp Oil 355 Quench Oil (In Service Date 2011) with Houghton Quench Additive 6220



32,000-Gallons of Quench Oil Available



Partial View - Heat Treat Lower Level

For more information, please visit us on the web at www.hilcoind.com



31555 W. Fourteen Mile Road, Suite 301
Farmington Hills, MI 48334
Ph: 248-254-9999
Fx: 248-254-9995
www.hilcoind.com

Presorted
First Class Mail
U.S. Postage
PAID
Detroit, Mich.
Permit No. 2655

Forwarding Service Requested

Hilco Industrial AVAILABLE IMMEDIATELY

REAL ESTATE OPPORTUNITY

By Private Treaty



ADDRESS

950 Tollgate Road
Elgin, IL 60123

BUILDING SPECIFICATIONS

Total: 132,219 Sq. Ft. +/- (Expandable)
Office: 10,948 Sq. Ft. +/- (Renovated in 2009)
Shop: 103,538 Sq. Ft. +/-

SITE AREA

14.26 Acres +/-

CEILING HEIGHT

• 27' - 31' Clear Height

YEAR BUILT

Built in 1981
2009 Transition from Assembly Facility to Gear Manufacturing Facility
2010 New Heat Treat Facility

LOADING FACILITIES

3 - Exterior Docks (Expandable)
4 - Drive-In Doors

BUILDING

- T-8 High Efficiency Lighting
- 13 Overhead Cranes Available - Up to 80-Ton Capacity
- Newer Roof
- 100% Air Conditioned
- Impeccably Maintained

FACILITY ACCESS

- 1.5 Miles to I-90 & Rt. 31 Interchange
- 27 Miles to O'Hare International Airport
- 39 Miles to Downtown Chicago Loop



For More Information on Real Estate Opportunity,
Please Contact Ben Spera, 617-737-5041, Email bspera@hilcoglobal.com



Follow Us on:

