

WEBCAST/ONSITE AUCTION

LEADING GLOBAL
GEAR
MANUFACTURER

Unprecedented Offering of Late Model, High Precision
Gear Machinery & Heat Treat Equipment
*For Production of Heavy Industrial
Gearboxes and Drivetrains*



Thursday, September 4th
10:00 am Local Time
Elgin, Illinois

Sale Offered in Partnership with



www.perfectionindustrial.com



Hilco™ Industrial

Phone +1 248-254-9999

www.hilcoind.com



A Hilco Global Company
Vested in Your Success

**LEADING GLOBAL
GEAR
MANUFACTURER**

AUCTION DATE

**THURSDAY, SEPTEMBER 4TH
BEGINNING AT 10AM LOCAL TIME**

PREVIEW DATES

**TUESDAY & WEDNESDAY,
SEPTEMBER 2ND & 3RD
8AM TO 4PM LOCAL TIME**

*FOR EARLIER INSPECTION, PLEASE CONTACT
JOHN MAGNUSON AT 847-504-3204 OR EMAIL
JMAGNUSON@HILCOGLOBAL.COM*

AUCTION & PREVIEW LOCATION

**950 TOLLGATE ROAD
ELGIN, IL 60123**

*Bid Onsite or
Bid remotely with HilCast*



*Prefer click-to-bid?
Register and bid on*



DIRECTIONS

FROM CHICAGO O'HARE INTERNATIONAL AIRPORT: EXIT AIRPORT TO I-190 E. MERGE ONTO I-90 W. EXIT ONTO IL-31 N, CONTINUE TO TOLLGATE RD AND TURN LEFT. FOLLOW SIGNS TO AUCTION SITE.

FURTHER INFORMATION

- AN 18% BUYER'S PREMIUM WILL BE CHARGED ON ALL ASSETS. THE BUYER'S PREMIUM WILL BE REDUCED TO 16% FOR ALL ONSITE AND HILCAST WEBCAST BUYERS FOR PAYMENTS MADE BY MEANS OF CASH, CASHIER'S CHECK, COMPANY CHECK (WITH BANK LETTER OF GUARANTEE) OR WIRE TRANSFER WITHIN 48 HOURS OF SALE CLOSE. AN 18% BUYER'S PREMIUM WILL BE CHARGED FOR ALL BIDSPOTTER PURCHASES WITH NO DISCOUNT FOR PROMPT PAYMENT. ACCEPTING U.S. CURRENCY ONLY.
- REMOVAL DEADLINE IS FRIDAY, OCTOBER 10TH WITH HOURS OF REMOVAL BETWEEN 8AM TO 4PM MONDAY THRU FRIDAY. BUYERS WITH ITEMS LEFT ON SITE AFTER DEADLINE ARE SUBJECT TO FINES OF \$500 PER DAY.

MACHINERY & EQUIPMENT

JOHN MAGNUSON 847-504-3204 • JMAGNUSON@HILCOGLOBAL.COM

PAYMENT INFORMATION

LESIA JOSEPH 616-328-6892 • LJOSEPH@HILCOGLOBAL.COM
HILCO ACCOUNTS RECEIVABLE AT HIN_AR@HILCOGLOBAL.COM

CUSTOMER SERVICE

+1 877-37-HILCO • +1 616-732-1800 • INFO@HILCOIND.COM
SANDI NEELY AT 248-254-9999 X16 • SNEELY@HILCOGLOBAL.COM

*Information contained herein deemed to be accurate at time of printing and subject to change.
For updated information, please visit our website at www.hilcoind.com for any changes to
date, sale process, terms and conditions and list of available assets.*

Available as a Turnkey Operation

**Interested parties can purchase the facility as a turnkey operation with all production equipment and real estate.
For More Information, Please Contact John Magnuson 847-504-3204, Email jmagnuson@hilcoglobal.com**

2009



CNC GEAR GRINDERS

**2 – GLEASON-PFAUTER MODEL P600G
600MM CNC GEAR GRINDERS,
S/Ns 30 898, 30 896 (Both 2009),
Maximum Gear Diameter: 600mm,
Axial Travel: 1000mm, Maximum Grind
Depth: 45mm, Tailstock Travel: 630mm
/ 1100mm, Arranged for Helical Gears,
with Tailstock (1) w/Extended Travel,
CNC Dresser, On Board Gear
Inspection, Sinumerik 840D CNC
Control, Hoffmann HSF 150SE/K
Recirculating Coolant Filtration System
with Chiller, Oil Mist Collector**



2009

CNC GEAR GRINDERS, *continued*

- 2 – HOFER MODEL RAPID II 1250 1250MM CNC GEAR GRINDERS, S/Ns 1337, 1342 (Both 2009), Maximum Gear Diameter: 1250mm, Axial Travel: 1000mm, Maximum Grind Depth: 80mm, Stroke Speed: 12,000mm/min, Max Grinding Wheel Speed: 4000-RPM, Table Speed: to 70-RPM, Max Table Load: 8,000-kG, Table Diameter: 930mm, Arranged for Helical Gears, with CNC Dresser, On Board Gear Inspection, Sinumerik 840D CNC Control, Hoffmann HSF 150SE/K Recirculating Coolant Filtration System with Chiller, Oil Mist Collector, 37-kW Grinding Spindle Drive, Short Term Power Supply Backup System
- 2 – HOFER MODEL RAPID 800 800MM CNC GEAR GRINDERS, S/Ns 1313, 1319 (Both 2009), Maximum Gear Diameter: 800mm, Axial Travel: 650mm, Maximum Grind Depth: 80mm, Stroke Speed: 12,000mm/min, Max Grinding Wheel Speed: 4000-RPM, Table Speed: to 70-RPM, Max Table Load: 3,000-kG, Table Diameter: 500mm, Arranged for Helical Gears, with CNC Dresser, On Board Gear Inspection, Sinumerik 840D CNC Control, Hoffmann HSF 150SE/K Recirculating Coolant Filtration System with Chiller, Oil Mist Collector



2009



2009

CNC GEAR HOBBERS

- 1 – HOFER MODEL HF1250/1600 1600MM CNC GEAR HOBBER, S/N 1412 (2009), Maximum Gear Diameter: 1600mm, Axial Travel: 1000mm, Maximum Module: 28mm, Table Diameter: 1250mm, Max Table Load: 6,000-kG, Max Table Speed: 35-RPM, Arranged for Helical Gears, with Sinumerik 840D CNC Control, Hoffmann Recirculating Coolant Filtration System with Chiller, Oil Mist Collector, Knoll Type 575 Magnetic Chip Conveyor, 52-kW Spindle Drive
- 1 – LIEBHERR MODEL LC800 800MM CNC GEAR HOBBER, S/N FN2149 (2009), Maximum Gear Diameter: 800mm, Axial Travel: 1000mm, Maximum Module: 20mm, Arranged for Helical Gears, with Sinumerik 840D CNC Control, Schimpke Type ERKS86-V Recirculating Coolant Filtration System with Chiller, Oil Mist Collector, Neuhauser Magnetic Chip Conveyor



2009

2009



CNC VERTICAL TURNING CENTER

1 – HESSAPP MODEL VDM 1200-11 1200MM CNC VERTICAL TURNING CENTER, S/N A.1003020.01 (2009), Maximum Turning Diameter: 1200mm, Maximum Swing: 1250mm, Z-Stroke: 950mm, Maximum Height of Workpiece & Chuck: 800mm, Speed Range: 4.5 to 630 RPM, HSK 100 Tooling, with Sinumerik 840D CNC Control, Schunk Type Rota NCO 1250/600 3-Jaw Hydraulic Chuck, Schmid 24-Position ATC, Knoll KF 400/950 Recirculating Coolant Filtration System with Hyfra Type TRK70-EF-S Chiller and Booster Pump, Splash Flushing, Oil Mist Collector, DGS Hinged Belt Chip Conveyor, Powered Safety Doors, Designed for Hard Steel Machining

2009



2009



GEAR INSPECTION MACHINES

- 1 – KLINGELNBERG MODEL P150 1800MM CNC GEAR INSPECTION MACHINE, S/N B4949 (2009), Maximum Gear Diameter: 1800mm, Maximum Gear Width: 1200mm, Maximum Distance Between Centers: 1800mm, with PC Control
- 1 – KLINGELNBERG MODEL P100 1000MM CNC GEAR INSPECTION MACHINE, S/N B6619 (2009), Maximum Gear Diameter: 1000mm, Maximum Gear Width: 800mm, Maximum Distance Between Centers: 1000mm, with PC Control
- 1 – KLINGELNBERG MODEL PSFU 1600 1600MM GEAR INSPECTION MACHINE, S/N B3990 (1986), Maximum Gear Diameter: 1600mm, Distance Between Centers: 1800mm, Helix, Involute, Index Inspection
- 2 – PORTA-KING CLIMATE CONTROLLED MODULAR ENCLOSURES, Approx. Size: (1) 20'W x 18'6"L x 17'H and (1) 23'9"W x 23'5"L x 17'H, Each with Sliding Doors, Retractable Ceiling Panels, Lights, Air Conditioning, Pre-Wired for Electric/Phone/Data, Sprinklers

CNC KEYSEATERS

- 1 – FROMAG MODEL CNC-E100-1000-APC 1000MM CNC KEYSEATER, S/N 138791 (2009), Maximum Gear Diameter: 1000mm, Maximum Keyway: 100mm, with TA500 Servo Index Table, Fromag Commander TF-15 CNC Control, Chip Conveyor
- 1 – FROMAG MODEL RA CNC 70/425 1000MM CNC KEYSEATER, S/N 50323-ASA (1991), Maximum Gear Diameter: 1000mm, Maximum Keyway: 100mm, with Fromag Control



2009

2009



CNC GEAR CHAMFERING/ DEBURRING MACHINE

1 – RAUSCH MODEL GRATOMAT GR 1600 1600MM TWIN-HEAD CNC GEAR CHAMFERING AND DEBURRING MACHINE, S/N 4635 (2009), Maximum Gear Diameter: 1600mm, Maximum Gear Height: 600mm, with PLC, Full Enclosure, Donaldson Torit UMA 103K3 Dust Collector

GEAR MACHINERY

1 – PFAUTER MODEL P900 900MM GEAR HOBBER, S/N 25902 (1980), Maximum Gear Diameter: 900mm, Axial Travel: 400mm, 2-Cut, with Full Enclosure, Coolant System, Magnetic Chip Conveyor

1 – PFAUTER MODEL P403 400MM GEAR HOBBER, S/N 25964 (1980), Maximum Gear Diameter: 400mm, Axial Travel: 300mm, 2-Cut, with Crowning, Full Enclosure, Coolant System, Magnetic Chip Conveyor

1 – HOFER MODEL BHS 800 800MM GEAR GRINDER, Maximum Gear Diameter: 800mm, Maximum Stroke: 300mm, Maximum Module: 12mm

1 – REISHAUER MODEL ZB 700MM GEAR GRINDER, S/N 52600-17 (1981), Maximum Gear Diameter: 700mm, Maximum Gear Face: 280mm, Maximum Module: 7mm

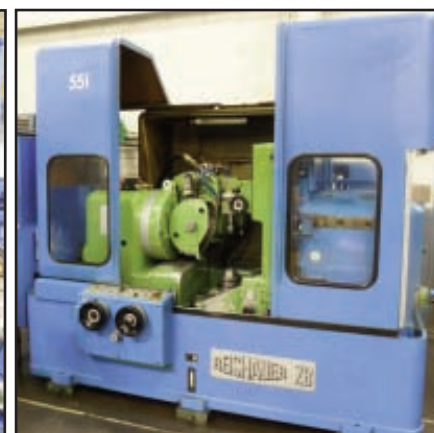
1 – REISHAUER MODEL AZO 450MM GEAR GRINDER, S/N 53300-20 (1981), Maximum Gear Diameter: 450mm, Maximum Gear Face: 280mm, Maximum Module: 7mm

1 – REISHAUER MODEL AM-10 400MM WHEEL DRESSER, S/N 53500-12 (1981), Maximum Wheel Diameter: 400mm

1 – RAUSCH MODEL 300HD 700MM GEAR DEBURRING MACHINE, S/N 2981/2032 (1981), Maximum Gear Diameter: 27.5", Table Diameter: 14", with Bosch Electric Straight Grinder

1 – HOFMANN MODEL EO-RE 400MM BALANCER, S/N 1/01/5/1630 (1981), Maximum Wheel Diameter: 400mm

1 – REISHAUER MODEL AF CENTRALIZED COOLANT FILTRATION SYSTEM, S/N 53900-34 (1981)



Partial Listing Only, Please Visit Our Website
www.hilcoind.com
 For Additional Photos & Complete Lot Catalog



MULTI-MILLION DOLLAR STATE-OF-THE-ART HEAT TREAT SYSTEMS

As New as 2011



Interested Parties Can Purchase the Entire Heat Treat Facility with the Option to Operate In Place. Contact Us For Details.



HEAT TREAT SYSTEM #1

2 - AICHELIN-IHU SIZE 200/250 ELECTRIC VERTICAL PIT CARBURIZING FURNACES, S/Ns 04.17444 (R09019-2 & R09019-1) (**Both 2010**), Max Temperature: 1800°F, Working Temperature Range: 1400° to 1750°F, Max Gross Load per Tray: 33,000-Lbs., Effective Load Size: 78"D x 98"H, (4) Heating Zones, (12) Heaters, Rod Over Bend Heating, Connected Heating Load: 400-kW, Overall Dimensions: 148"D x 210"H, with Frey Carbomaster Process Controls and Protherm 500 Furnace Control, Retort, Cover Lifting and Swiveling Unit, Gas Recirculation Fan, Rapid Cooling System for Internal Cooling of Retort and Load, Sample/Flush/Pressure Probes, Pressure Regulator, Buhler EGK12 Sample Gas Cooler, Buhler Gas Extraction Sensor, MMI Carbonseer Zirconia Carbon Sensor, Siemens PLC's, 480V/60Hz

3 - AICHELIN-IHU SIZE 160/250 ELECTRIC VERTICAL PIT CARBURIZING FURNACES, S/Ns 04.17444 (R09019-3), 04.17444, 04.18199 (**To 2011**), Max Temperature: 1800°F, Working Temperature Range: 1400° to 1750°F, Max Gross Load per Tray: 22,000-Lbs., Effective Load Size: 63"D x 98"H, (4) Heating Zones, (12) Heaters, Rod Over Bend Heating, Connected Heating Load: 320-kW, Overall Dimensions: 132"D x 210"H, with Frey Carbomaster Process Controls and Protherm 500 Furnace Control, Retort, Cover Lifting and Swiveling Unit, Gas Recirculation Fan, Rapid Cooling System for Internal Cooling of Retort and Load, Sample/Flush/Pressure Probes, Pressure Regulator, Buhler EGK12 Sample Gas Cooler, Buhler Gas Extraction Sensor, MMI Carbonseer Zirconia Carbon Sensor, Siemens PLC's 480V/60Hz

2 - AICHELIN-IHU ELECTRIC VERTICAL PIT CARBURIZING FURNACES, Size 120/250, S/N 04.17444 (R09019-4) (**2010**) and Size 120/200, S/N 04.16870/1 (2009), Max Temperature: 1800°F, Working Temperature Range: 1400° to 1750°F, Max Gross Load per Tray: 17,500-Lbs., Effective Load Size: 47"D x 98"H, (3) Heating Zones, (9) Heaters, Rod Over Bend Heating, Connected Heating Load: 270-kW, Overall Dimensions: 116"D x 210"H, with Frey Carbomaster Process Controls and Protherm 500 Furnace Control, Retort, Cover Lifting and Swiveling Unit, Gas Recirculation Fan, Rapid Cooling System for Internal Cooling of Retort and Load, Sample/Flush/Pressure Probes, Pressure Regulator, Buhler EGK12 Sample Gas Cooler, Buhler Gas Extraction Sensor, MMI Carbonseer Zirconia Carbon Sensor, Siemens PLC's, 480V/60Hz

3 - AICHELIN SIZE 200/250 ELECTRIC VERTICAL PIT TEMPERING FURNACES, S/Ns R09019-8, R09019-7, R07018-2 (**All 2010**), Max Temperature: 850°F, Working Temp Range: 700° to 840°F, (4) Temperature Control Zones, Max Gross Load per Tray: 33,000-Lbs., Effective Load Size: 78"D x 98"H, (9) Heaters, Rod Over Bend Type, (3) 60-kW Heating Zones, Overall Dimensions: 130"D x 210"H, with Retort Cover Lifting Unit, Gas Recirculation Fan, Airtech Electrostatic Filter, 480V/60Hz



MULTI-MILLION DOLLAR STATE-OF-THE-ART HEAT TREAT SYSTEMS



Approximately 32,000 - Gallons of Quench Oil Available

HEAT TREAT SYSTEM #1, *continued*

2 – AICHELIN SIZE 200/250 VERTICAL PIT OIL QUENCH TANKS, S/Ns R09019-5, R09019-6 (Both 2010), Max Quench Temperature: 350°F, Working Temperature Range: 200° to 325°F, Max Safe Oil Temp: 440°F, Tank Volume (Approx): 16,642-Gallons (63,000-Liters), Effective Load Size: 78"D x 98"H, Max Gross Load per Tray: 33,000-Lbs., Connected Heating Load: 160-kW, (2) Heating Zones, Overall Dimensions: 200"W x 220"L x 230"H, with (8) 20-kW Immersion Heaters, (4) 10-HP Agitators, Heat Exchanger, Motorized Cover Lift, Impeller Driven Quench Media System, Oil Vapor Exhaust Openings, CO2 Ring with Nozzles, (2) Oil Recirculation Pumps, Siemens Controls, 480V/60Hz

1 – AICHELIN SIZE 200/250 VERTICAL PIT POST WASHER, S/N R09019-9 (2010), Wash Fluid: Water, Contained Fluid: 5,283-Gallons, Max Operating Temp: 150°F, Temp Working Range: 33° to 120°F, Spray Pump: 25-HP (412-GPM), (1) Temperature Control Zone, Effective Load Size: 78"D x 98"H, Gross Load per Tray: 33,000-Lbs., Overall Dimensions: 126"W x 176"L x 188"H, with (6) Spray Rinse Zones with 76-Nozzles, SmartSkim Oil Skimmer, (2) Heat Exchangers, Tank Level Indicators, Carbon Steel Construction, Motorized Cover Lift, 480V/60Hz

QUANTITY OF Approximately 16,600-Gallons of Petrofer Type Marquench 875 Special Quench Oil (In Service Date September 2013)

QUANTITY OF Approximately 16,600-Gallons of Houghton Type Mar-Temp Oil 355 Quench Oil (In Service Date 2011) with Houghton Quench Additive 6220

HEAT TREAT SYSTEM #2

1 – NOLZEN TYPE GK 90/150 ELECTRIC VERTICAL PIT CARBURIZING FURNACE, S/N 14777 (04.15355) (New 1995; Retrofit with New Controls in 2008), Max Temperature: 950°C, Effective Load Size (Approx): 1710mm (Dia) x 1500mm (H), Overall Dimensions (Approx): 2100mm (Dia) x 3540mm (H), with Frey Carbodrop-Carbospeed-Carbomaster Furnace Process Controls, Retort, Cover Lifting and Swiveling Unit

1 – NOLZEN TYPE 120/200 ELECTRIC VERTICAL PIT CARBURIZING FURNACE, S/N 04.168707214777 (04.15355) (New 1981; Retrofit with New Controls in 2009), Max Temperature: 950°C, Effective Load Size (Approx): 900mm (Dia) x 3175mm (H), Overall Dimensions (Approx): 2100mm (Dia) x 3300mm (H), with Frey Carbodrop-Carbospeed-Carbomaster Furnace Process Controls, Retort, Cover Lifting and Swiveling Unit

1 – AICHELIN ELECTRIC VERTICAL PIT TEMPERING FURNACE, Overall Dimensions (Approx): 80" (Dia) x 79" (H) with Frey Carbodrop-Carbospeed-Carbomaster Furnace Process Controls

1 – AICHELIN VERTICAL PIT POST WASHER, Overall Dimensions (Approx): 58" (Dia) x 90" (H), with Updated Frey Process Controls, Manual Cover Lift

1 – AICHELIN VERTICAL PIT QUENCH TANK, Effective Load Size (Approx): 62" (Dia) x 12" (D), with (3) Agitators, Manual Cover Lift, Airtech EF 45 Electrostatic Filter

1 – VERTICAL PIT POST WASHER, with (1) 30-HP and (1) 25-HP Pumps, 48" x 84" x 120" (Approx) Tank, SmartSkim Oil Skimmer, Hydraulic Cover Lift

1 – VERTICAL PIT QUENCH TANK, Overall Dimensions (Approx): 12"W x 12"L x 14"H, with Motorized Cover Lift





2010



SHOT BLAST & FINISHING MACHINES

- 1 - **WHEELABRATOR MODEL ROTO-JET HB 20/30-5.4-4/15 SHOT BLAST MACHINE (2010)**, Max Workpiece Size: 2000mm Diameter x 3000mm High x 6000-kG, Blast Media: Round Steel Shot, Abrasive Throwing Speed: 75 m/s (Approx.), with Schlick Type A 40/12 Air-Shoc Cartridge Filter Unit, In Floor Abrasive Collection Hopper, Bucket Elevator, Abrasive Reclamation Unit and Silo, Abrasive Control Units, (4) Roto-Jet Type 5.4 Double Disk Turbines, Motorized Part Loading System Mounted on Free-Standing "T" Shaped Overhead Monorail Track with (2) Carrier Hooks, PLC, Dual Doors with Auto Close and Electro-Pneumatic Lock, Welded Manganese Steel Construction, 480V/60Hz

- 1 - **GUTMANN MODEL PH-S12/281 SHOT BLAST MACHINE**, S/N 56687 (1981), Max Workpiece Size: 1200mm Diameter x 2200mm High x 1500-kG, with Dual Doors, Dust Collector, (2) 10-HP Blast Wheels, 1500-kG Monorail Mounted Manual Loading System

- 1 - **REM ABRASIVE FINISHING SYSTEM**, Consisting of: Vibrochimica Model VBT 1400/1 Bowl-Type Vibratory Finisher, S/N 10552 (2002), 74" Diameter x 25" Deep Bowl, with Inner and Outer Burnishing Rings, Golz Model SFP-8L Pneumatic 9-Plate Slurry Filter Press, S/N 000058 (2011), REM Dosing Panel Controls, Siemens Simatic PLC, (2) Peristaltic Pumps, (1) Dosatron Eduction Pump

ETCH DIP LINE

- 1 - **ETCH DIP LINE**, Consisting of: (10) 58"W x 58"L x 32"D Carbon Steel Tanks, Tanks 1 & 2 with Belt Skimmers, Tanks 1/2/3 with Indeco Heating Units, with Demag 3-Ton Electric Chain Hoist on Full Length Overhead Monorail, 117"L x 48"W Infeed & Outfeed Roller Conveyors, All Components Mounted on Common Fabricated Structural Steel Frame

STRAIGHTENING PRESS

- 1 - **MAE MODEL HY-S160-RH-SO 160-KN HYDRAULIC GAP FRAME STRAIGHTENING PRESS**, S/N 5791 Stroke: 350mm, Daylight: 902mm, Throat Depth: 350mm, Bed Area: 2000mm x 400mm, with Straightening Attachment



2002

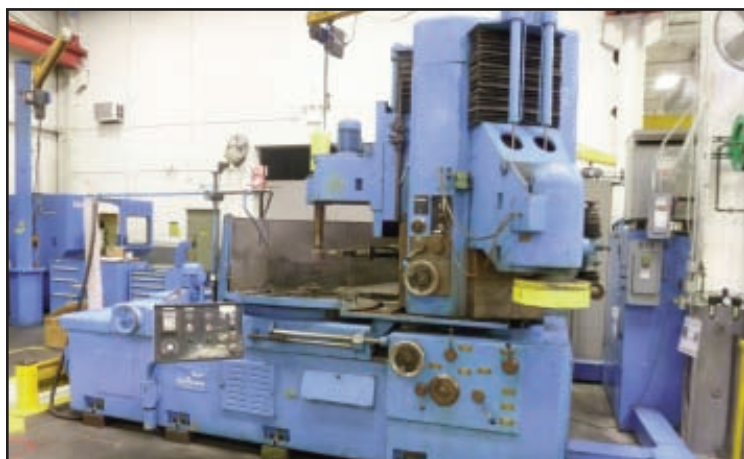


MACHINE TOOLS: SPLINE MILL • LATHES • GRINDERS • DRILLS



MACHINE TOOLS

- 1 - HURTH MODEL LF 2000 200MM AUTOMATIC KEYWAY/SPLINE MILLING MACHINE, S/N 17801 (1981), Maximum Part Diameter: 200mm, Maximum Cut Length: 2000mm, Spindle Speed: 180-2240 RPM, Cutter Spindle Axial Travel (Z): 120mm, Spindle Bore: 17mm, Table Area: 3200mm x 375mm, ISO 40 Taper, with (2) Workpiece Support Blocks, Coolant System
- 1 - SCHIESS TYPE 14 45" VERTICAL TURRET LATHE, S/N 379042 (1971), Table Diameter: 45", Table Speed: 6.3-315 RPM, with 6-Position Power Rotating Turret, Power Side Head with Acu-Rite DRO, 50-HP Main Table Drive Motor, Coolant System, Chip Conveyor, Pendant Control
- 1 - SCHMID MODEL SE124C-900-6160/364 NC FACING & CENTERING MACHINE, S/N 4662-5, with Summit (Dana) Taskmaster 8138 Control, 6-Position Turret, Hydraulic Clamping, Hydraulic Headstock and Tailstock Travel, Mayfran Chip Conveyor
- 1 - SHIGIYA SEIKI MODEL GP-45-220 17.7" X 86.6" CYLINDRICAL GRINDER, S/N 50133, with 2-Axis DRO, Coolant System
- 1 - SHIGIYA SEIKI MODEL GU-32-100H 12.6" X 39.4" CYLINDRICAL GRINDER, S/N 10632, with 2-Axis DRO, Coolant System
- 1 - OKAMOTO MODEL IGM-3U INTERNAL GRINDER, S/N 110 (1981), Max Swing: 27-11/16", Max Table Travel: 20", Max Grinding Stroke: 16", Table Speed: 0-16.4 FPM, Workhead Speed: 50-500 RPM, Workhead Swivel: up to 90°, with 12" 3-Jaw Chuck, Coolant System
- 1 - KINGSTON MODEL HR3000 25" X 118" ENGINE LATHE, S/N 03691103 (1981), 4" Spindle Hole, 8-800 RPM, with 16" 3-Jaw Chuck, Tool Post, Steady Rest, Coolant System
- 1 - SIELEMANN 3-HEAD VERTICAL OD / ID GRINDER, S/N N/A, 39" Diameter Table, with (2) Type EDN010 External Grinding Heads - (1) 20-HP & (1) 10-HP, (1) Pope Internal Grinding Head, All Grinding Heads Mounted on Motorized 3-Position Headstock, 23-kW Table Drive Motor, Hoffman Coolant Filtration System
- 1 - OUYA MODEL RE3-1600 16" X 54" RADIAL ARM DRILL, S/N 816222 (1981), 20-2180 RPM, with 20" x 28" x 26" Indexing Box Table, In Base Coolant, 64" x 34" T-Slotted Table, 96" x 39" Flush Floor Mounted T-Slotted Side Table
- 1 - HENNINGER TYPE ZS150 CENTER HOLE GRINDER, S/N 81152 (1981), Workpiece Length: 2" to 106", Vice Capacity: .060" to 6", with Dust Collector
- 1 - WABECO MODEL DREHMASCHINE D4000 BENCH-TOP LATHE, S/N 101117 (2011), 8" X 13.7", 30-2300 RPM
- 1 - JET MODEL BD-920 9" X 20" BENCH TOP LATHE, S/N 106159
- 1 - ROCKWELL 6" DOUBLE END GRINDER, 1/2-HP
- 1 - BALDOR 6" DOUBLE END GRINDER, S/N F681, 3/4-HP
- 1 - ROCKWELL 12" DISC GRINDER, S/N 31-125
- 1 - ORBIT MODEL OR-1412 14" DRILL PRESS, S/N 7435
- 1 - STERLING MODEL DV DRILL POINT GRINDER, S/N DG7491
- 1 - RIDGID MODEL 535 PIPE THREADER



LABORATORY & TEST EQUIPMENT

- 3 – LECO MODEL LCR-500 LOAD CELL ROCKWELL-TYPE HARDNESS TESTERS, S/Ns LCR0485, LCR0489 (2010) and LCR0316 (2008)
- 2 – LECO MODEL LM-100AT MICROINDENTATION HARDNESS TESTERS, S/Ns FMX2436, FMX2386 (To 2010)
- 3 – BUEHLER MODEL ECOMET 300 LAB GRINDER/POLISHERS, S/Ns 682-E306-00189, 682-E306-00182, 682-E306-00184 (All 2010), with AutoMet 250 Power Head
- 1 – BUEHLER MODEL PHOENIX 4000 LAB GRINDER/POLISHER, S/N 633-PHXV-11945 (2006)
- 1 – BUEHLER MODEL ABRASIMATIC 300 12" LAB SAMPLE ABRASIVE CUTTER, S/N 682-DABX-00147, with Touch Screen Control
- 1 – BUEHLER MODEL POWERMET 1000 LAB SAMPLE ABRASIVE CUTTER, S/N 633-PW1R-5391 (2006)
- 1 – LECO MODEL MSX250A LAB SAMPLE ABRASIVE CUTTER (2011), 12" Blade Diameter
- 1 – BUEHLER MODEL SIMPLIMET 3000 AUTOMATIC MOUNTING PRESS, S/N 682-NST-00576 (2010)
- 1 – LECO MODEL CS-225 CARBON-SULFUR DETERMINATOR, S/N 3171
- 1 – LECO MODEL C230 CARBON ANALYZER

INSPECTION & MEASUREMENT

- 1 – MAGNAFLUX MAGNETIC PARTICLE INSPECTION MACHINE, with Magnaflux M-2030LC Power Pack S/N 209165 (2010), RMC (AC) or Average (DC) Output: 3000-Amps (Max), 49" Diameter Rotary Index Table with Adjustable Bath Hoses, Magnaflux ZB-100F Handheld Black Light, Auto Current Control, Cycle Timer, Full Curtain Enclosure
 - 1 – MAGNAFLUX MODEL H-680 MAGNETIC PARTICLE INSPECTION MACHINE, S/N 88274 (1988), 16" Coil ID, Max Current Output: 4000-Amps, Nominal Coil Current: 1300-Amps, Max Part Length: 100" (Approx), with GD-96 Power Supply (S/N 28889), (3) Support Fixtures, Magnaflux ZB-100F Handheld Black Light, Auto Current Control, Cycle Timer, Digital Amp Indicator, Full Curtain Enclosure
 - 1 – FOWLER MODEL HPA1500 HORIZON PREMIUM ANALOG GAUGING SYSTEM, S/N 1339 (2009), with Metronics QC100 Digital Readout
 - 1 – ZOLLER MODEL VENTURION 800 CNC TOOL PRESETTER, S/N V88053-00078 (2009)
 - 1 – KARL DEUTSCH TYPE ECHOGRAPH 1090.301 DIGITAL UT FLAW DETECTOR, S/N 11076 (2011), with Case
 - 1 – GE (KRAUTKRAMER) TYPE USN 58L ULTRASONIC FLAW DETECTOR
 - 2 – KARL DEUTSCH TYPE 387 DEUTROMETERS
 - 2 – SYPRIS MODEL 5170 DIGITAL GAUSS/TESLA METERS
 - 1 – SPECTROLINE MODEL ACCUMAX XRP-3000 ADVANCED DIGITAL RADIOMETER/PHOTOMETER KIT
 - 1 – OLYMPUS MODEL BX51 MICROSCOPE, Paxcam Digital Microscope Camera
 - 1 – NABERTHERM MODEL L 15/12/P330 LABORATORY FURNACE, S/N 218743 (2011), Single-Phase
 - 1 – CHALLENGE 60" X 84" X 6" STEEL LAYOUT TABLE
 - 1 – ROCK OF AGES 48" X 60" X 12" GRANITE SURFACE PLATE, S/N SUR1
- QUANTITY OF MISCELLANEOUS TEST & MEASUREMENT EQUIPMENT, Including:** Calipers, Micrometers, Gages, Hardness Testers, Reference Blocks, Etc.



2010



2010



2009



2009



CRANES

- 1 – KONE 20-TON X 42'-2-1/2" SPAN SINGLE GIRDER BRIDGE CRANE, S/N 303917, with Electric Hoist, Pendant
- 1 – DEMAG 10-TON X 75'-9" SPAN DOUBLE GIRDER BRIDGE CRANE, S/N S10104, with Electric Hoist, Pendant Control
- 1 – KONE 10-TON X 42'-2-1/2" SPAN SINGLE GIRDER BRIDGE CRANE, S/N 2157883, with Electric Hoist, Radio Control
- 1 – DEMAG 10-TON X 42'-2-1/2" SPAN SINGLE GIRDER BRIDGE CRANE, S/N 80271, with Electric Hoist, Radio Control
- 1 – DEMAG 6-TON X 42'-2-1/2" SPAN SINGLE GIRDER BRIDGE CRANE, S/N 81065, with Electric Hoist, Radio Control
- 2 – DEMAG 5-TON X 42'-2-1/2" SPAN SINGLE GIRDER BRIDGE CRANES, S/Ns 1001, 79223, with Electric Hoist, Radio Control
- 2 – DEMAG 1-TON FREE-STANDING JIB CRANES, Approx. 17' Boom, with 1-Ton Electric Hoist, 14' Under Boom
- 8 – DEMAG 2200-LB. FREE-STANDING JIB CRANES, Approx. 13'/17' Boom, with 2200-Lb. Electric Hoist, 12'/14' Under Boom
- 1 – DEMAG 1-TON FREE-STANDING JIB CRANE, S/N 981183-2, 360° Rotation, Approx. 15' Boom, with 2200-Lb. Electric Hoist, 13' Under Boom
- 2 – DEMAG 1-TON FREE-STANDING JIB CRANES, Approx. 13'/16' Boom, Electric Hoist, 10'/14' Under Boom
- 1 – DEMAG 1/2-TON FREE-STANDING JIB CRANE, Approx. 13' Boom, with 500-kG Electric Hoist, 13' Under Boom
- 9 – DEMAG 500-KG FREE-STANDING JIB CRANES, Up to 17' Boom, Electric Hoist, Up to 16' Under Boom
- 2 – DEMAG 250-KG FREE-STANDING JIB CRANES, Approx. 10' Boom with 250-kG Electric Hoist, 9'9" Under Boom
- 4 – DEMAG WALL MOUNTED JIB CRANES, Up to 1/2-Ton, to 17' Boom, Electric Hoist
- 1 – DEMAG 1/4-TON JIB CRANE, Approx. 10' Boom

MATERIAL HANDLING • PLANT & PRODUCTION SUPPORT

MATERIAL HANDLING

- 1 – YALE MODEL ERC100HHN36TE092 10,000-LB. ELECTRIC FORKLIFT TRUCK, S/N C83N02166H, 185" Lift, Sideshift, Fork Positioning, 48" Forks, Cushion Tires, 36V
- 1 – YALE MODEL GLC070VXNGSE088 6,500-LB. ELECTRIC FORKLIFT TRUCK, S/N A910V17605J, 187" Lift, Sideshift, 42" Forks
- 3 – YALE MODEL MCW040LEN24TV083 4,000-LB. ELECTRIC WALKIE FORKLIFT TRUCKS, S/Ns C819N02227G, C819N02226G, C819N02225G, 122" Lift, 42" Forks, 24V
- 3 – YALE MODEL NR045EANS36TE095 3,900-LB. ELECTRIC ORDER PICKERS, S/Ns C861N03371J, C861N03191J, C861N03370J, 212" Lift, 42" Forks, 36V
- 1 – YALE MODEL MSW040LEN24TV083 4,000-LB. ELECTRIC STACKER, S/N C802N04590J, 122" Lift, 42" Forks, 24V
- 1 – YALE MODEL MPW080LEN24T2748 8,000-LB. ELECTRIC PALLET JACK, S/N A819N02690G, 24V
- 1 – CROWN MODEL 60PE-27-3 6,000-LB. ELECTRIC PALLET JACK, S/N W-24077, 24V



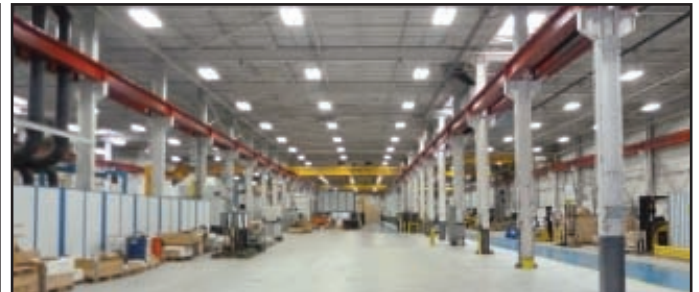
PLANT & PRODUCTION SUPPORT

- 16 – SAFETY KLEEN PARTS WASHERS, (TO 2010), up to 83"L x 83"W x 39"D
- 1 – KAESER MODEL ASD 25T 25-HP ROTARY SCREW TYPE AIR COMPRESSOR, S/N 1127 (2007), 125-PSIG, 112-CFM, with Kaeser Sigma Control
- 1 – ATLAS COPCO MODEL GA 209 25-HP ROTARY SCREW TYPE AIR COMPRESSOR, S/N ABP 705-74-2
- 1 – ARROW PNEUMATICS MODEL A-100 REFRIGERATED AIR DRYER, S/N TF474
- 5 – SIC MARKING MODEL E9-P122 PORTABLE ELECTROMAGNETIC DOT MARKING SYSTEMS (2008)
- 1 – DARPPA MODEL TECHNOMARK PORTABLE MARKING SYSTEM (2010)
- 1 – TENNANT MODEL T7 FLOOR SCRUBBER, with Charger



REAL ESTATE OPPORTUNITY

By Private Treaty



ADDRESS

950 Tollgate Road
Elgin, IL 60123

BUILDING SPECIFICATIONS

Total: 132,219 Sq. Ft. +/- (Expandable)
Office: 10,948 Sq. Ft. +/- (Renovated in 2009)
Shop: 103,538 Sq. Ft. +/-

SITE AREA

14.26 Acres +/-

CEILING HEIGHT

• 27' – 31' Clear Height

YEAR BUILT

Built in 1981
2009 Transition from Assembly Facility to Gear Manufacturing Facility
2010 New Heat Treat Facility

LOADING FACILITIES

3 - Exterior Docks (Expandable)
4 - Drive-In Doors

BUILDING

- T-8 High Efficiency Lighting
- 40+ Jib & Overhead Cranes Available – Up to 80-Ton Capacity
- Newer Roof
- 100% Air Conditioned
- Impeccably Maintained

FACILITY ACCESS

- 1.5 Miles to I-90 & Rt. 31 Interchange
- 27 Miles to O'Hare International Airport
- 39 Miles to Downtown Chicago Loop

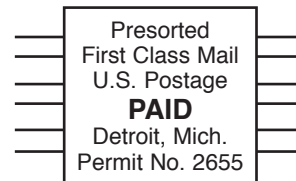
For More Information on Real Estate Opportunity, Please Contact Ben Spera, 617-737-5041, Email bspera@hilcoglobal.com

Also Available as a Turnkey Operation

Interested parties can purchase the facility as a turnkey operation with all production equipment and the real estate.
Please contact John Magnuson at 847-504-3204, Email jmagnuson@hilcoglobal.com



31555 W. Fourteen Mile Road, Suite 301
Farmington Hills, MI 48334
Ph: 248-254-9999
Fx: 248-254-9995
www.hilcoind.com



Forwarding Service Requested

Hilco Industrial **WEBCAST/ONSITE AUCTION**

LEADING GLOBAL GEAR MANUFACTURER

Unprecedented Offering of Late Model, High Precision
Gear Machinery & Heat Treat Equipment
For Production of Heavy Industrial Gearboxes and Drivetrains

Thursday, September 4th
10:00 am Local Time
Elgin, Illinois

Terms of Sale

An 18% buyer's premium will be charged on all assets. The buyer's premium will be reduced to 16% for all onsite and Hilco Webcast buyers for payments made by means of cash, cashier's check, company check (with bank letter of guarantee) or wire transfer within 48 hours of sale close. An 18% buyer's premium will be charged for all BidSpotter purchases with no discount for prompt payment. Everything will be sold to the highest bidder for cash, in accordance with the Auctioneer's customary "Terms of Sale", copies of which will be posted on the premises of the sale and subject to additional terms announced the day of sale. All items will be sold "as is, where-is" without any warranties, expressed or implied. Although obtained from sources deemed reliable, the Auctioneer makes no warranty or guarantee to the accuracy of the information herein contained. Bidders are encouraged to thoroughly inspect the items on which they intend to bid prior to sale. Absolutely no items will be removed until the day after the conclusion of the sale and payment is made in full. Subject to additions, deletions and prior sale. For updated information, please visit our website at www.hilcoind.com for any changes to date, sale process, terms and conditions and list of available assets.

Payment: INVOICES WILL BE EMAILED WITHIN 24 HOURS AFTER THE AUCTION CLOSES. Payment is to be made to Hilco Industrial, LLC. Payment Options: VISA or Mastercard accepted – if invoice total is \$2,000 or less; Wire Transfer; Certified Check; or Company Check (with Bank letter of guarantee – see sample letter below). All sales are subject to sales tax. Purchasers claiming exemptions from taxes must provide proof satisfactory to the Auctioneer of their entitlement to claim such exemptions. Please see complete terms and conditions on our website, www.hilcoind.com.

Sample Bank Letter

(Bank Name) unconditionally guarantees payment to Hilco Industrial from (Company Name). This guarantee will be valid for purchases made at the Auction of a Leading Global Gear Manufacturer on September 4, 2014.

