

# 2 AUCTIONS

**LIVE WEBCAST  
& ONLINE**

## LIVE WEBCAST AUCTION

Surplus Assets to the Ongoing Operations of



**A LEADING GLOBAL  
WIRE & CABLE  
MANUFACTURER**

AUCTION

**1**

**Sale Date:** Thursday, December 7 at 9:00 AM CST  
**Location:** 1392 Rammel Dam Road, Malvern, Arkansas 72104  
**Inspection:** Wednesday, December 6 from 8:30 AM to 4:30 PM CST  
or By Appointment

## ONLINE AUCTION

AUCTION

**2**

**Sale Date:** Tuesday, December 12 at 10:00 AM CST  
**Location:** 1392 Rammel Dam Road, Malvern, Arkansas 72104  
**Inspection:** Wednesday, December 6 & Thursday, December 7  
from 8:30 AM to 4:30 PM CST or By Appointment

**FEATURING: SYNCRO FX-13 ROD BREAKDOWN MILL, (3) VAUGHN 10 & 11  
DIE ROD BREAKDOWN MILLS, (3) CEECO & SYNCRO TUBULAR  
STRANDERS, (3) NEB RIGID STRANDERS, CEECO STRAND SERVE LINE,  
CEECO PLANETARY CABLER, (5) DAVIS STANDARD 6" & 4.5" EXTRUDERS,  
PAYOFFS & TAKE-UPS, MACHINE TOOLS, SUPPORT EQUIPMENT, & MORE**



**2012**

ROYAL LIFTMASTERS T300C 30,000 LB LPG FORKLIFT

**REBUILT 2008**



SYNCRO FX-13 ROD BREAKDOWN LINE



**PERFECTION  
Industrial Sales**

Perfection Industrial Sales  
ph +1-847-545-6374 • fax +1-847-427-8884  
[www.perfectionindustrial.com](http://www.perfectionindustrial.com)

Sale is Being Held in Conjunction With:

Commission



Brokers

P.O. Box 8456  
ph 401-943-3777

[www.commissionbrokers.com](http://www.commissionbrokers.com)

Webcast Bidding Available Through

**BidSpotter.com**

Online Bidding at

[www.perfectionindustrial.com](http://www.perfectionindustrial.com)



# ROD BREAKDOWN MILLS

## LIVE WEBCAST AUCTION

1  
AUCTION

Assets Surplus to the Ongoing Operations of



**Sale Date:** Thursday, December 7 at 9:00 AM CST

**Location:** 1392 Remmel Dam Road, Malvern, Arkansas 72104

**Inspection:** Wednesday, December 6 from 8:30 AM to 4:30 PM CST or By Appointment

**REBUILT 2008**



SYNCR0 FX-13 ROD BREAKDOWN MILL

**1997**



BEKAERT 300 KVA ANNEALER

### BREAKDOWN MILLS

**SYNCR0 FX-13 ROD BREAKDOWN LINE**, c/w Syncro FX-13 Rod Breakdown Mill, Internal Capstans-17.5", External Capstan-17.5" (1.5 Deg. Taper), Max. Input Rod 5/16" CU, Max./Min. Output .250"/.0661", Die Case 1.5" Diameter x 1-1/8" Thick, 400 HP Motor, NOTE: Rebuilt in 2008 by Talladega, 1997 Bekaert 300 KVA Annealer, 60 HP Motor, 1997 Bekaert 24" Dual Spooler, 5" or 8" Arbors, Rated 7,000 FPM, 60 HP DC Motors, Vaughn Pointer, Controls and Operator Console, Transformers

**VAUGHN 11 DIE ROD BREAKDOWN LINE**, c/w Vaughn 11 Die Rod Breakdown Mill, s/n C3049, w/14" x 2.5" Internal Capstans, 16" x 4.5" External Capstan, Max. Input Rod .50" EC AL, 3/8" AL Alloys, Max./Min. Output .187"/.0612", Die Case 1.5" Diameter x 1-1/8" Thick, 400 HP Motor, Direct Drive, Vaughn 31" Dual Spooler, s/n 36948-10, w/8" Arbor, Rated 7,300 FPM, (2) GE 40 HP DC Motors, Controls and Operator Console, Transformers

**VAUGHN 10 DIE ROD BREAKDOWN LINE**, c/w Vaughn 10 DMT 10 Die Rod Breakdown Mill, s/n C3466, w/18" x 3" Internal Capstans, 22" x 5" External Capstan, Max. Input Rod .50" EC AL, 3/8" AL Alloys, Max./Min. Output .187"/.062" (Nominal)-.258"/.0612" (Actual), Die Case 1.5" Diameter x 1-1/8" Thick, 300 HP Motor, Gearbox Driven, Vaughn 31" Dual Spooler, s/n C3467, w/8" Arbor, Rated 7,500 FPM, (2) GE 40 HP DC Motors, Controls and Operator Console, Transformers

**VAUGHN 10 DIE ROD BREAKDOWN LINE**, c/w Vaughn 10-DMT 10 Die Rod Breakdown Mill, s/n C3442, 18" x 3" Internal Capstans, 22" x 5" External Capstan, Max. Input Rod .590" EC1350, Max./Min. Output .365"/.0612", Die Case 1.5" Diameter x 1-1/8" Thick, 400 HP Motor, Direct Drive, Vaughn 31" Dual Spooler, s/n C3443, w/8" Arbor, Rated 7,500 FPM, (2) GE 40 HP DC Motors, Controls and Operator Console, Transformers

**(2) 1999 NEIHOFF MT200 INTERMEDIATE WIRE DRAWERS**, s/n 10.53.024, 10.52.276, w/100 HP Motors, Ceramic Draw Capstans, (1)w/RDA 200 Annealer, (1) w/RT200 Annealer

**31"**



VAUGHN DUAL SPOOLER

**2 AVAILABLE**



VAUGHN 10 DMT 10 DIE ROD BREAKDOWN MILL

**31"**



VAUGHN DANCER AND SPOOLER

To discuss your requirements for an auction, please call Perfection Industrial +1-847-545-6374



# ROD BREAKDOWN MILLS, STRANDERS



CEECO 12+1 31" TUBULAR STRANDER LINE



**2 AVAILABLE**

NEW ENGLAND BUTT (NEB) 54 WIRE 31" RIGID STRANDER LINE



**1,500 AVAILABLE**

VIEW OF 31" REELS



**84"**

BARTELL SLPO84-545RH PAY-OFF



**SPINS SAFE CRADLES**

SYNCRO 7+1 31" TUBULAR STRANDER LINE



**84"**

BARTELL SLTU84-567RH SHAFTLESS TAKE-UP

## STRANDERS

**CEECO 12+1 31" TUBULAR STRANDER LINE**, w/Bartell SLPO84-545RH Pay-Off, w/20,000 Lb Capacity, Ceeco L4-K1B1 12+1 31" Tubular Strander, w/8" Arbors, Max. Design RPM: 700, Min./Max. Lay Values: 0.94"/15", Trunnion Style, 150 HP DC Motor, 48" Dual Wheel Capstan, w/1" Grooves, 50 HP DC Motor, Controls, Sound Hood

**SYNCRO 7+1 31" TUBULAR STRANDER LINE**, w/OE-3107 Syncro 7+1 31" Tubular Strander, s/n 6836, w/8" Arbors, Max. Design RPM: 550, Min./Max. Lay Values-1.76"/24.9", Trunnion Style, Spin/Safe Cradles, 100 HP DC Motor, 48" Dual Wheel Capstan, w/1" Grooves, Syncro 84" Shaftless Take-Up, s/n SY-3497, w/20,000 Lb Capacity, Controls, Sound Hood

**SYNCRO 7+1 31" TUBULAR STRANDER LINE**, w/OE-3107 Syncro 7+1 31" Tubular Strander, s/n 6835, w/8" Arbors, Max. Design RPM: 550, Min./Max. Lay Values-1.76"/24.9", Trunnion Style, 100 HP DC Motor, 48" Dual Wheel Capstan, w/1" Grooves, Bartell SLTU84-567RH 84" Shaftless Take-Up, 20,000 Lb Capacity, Controls, Sound Hood

**NEW ENGLAND BUTT (NEB) 54 WIRE 31" RIGID STRANDER LINE**, c/w Southwire 96" Payoff, NEB 54-Wire 31" Rigid Strander, w/12+18+24, 8" Arbors, Max. Design RPM: 12 Head-175, 18 Head-150, 24 Head-150, Min./Max. Lay Values: 1.43"/32.71", 100 HP Motor, NEB 72" Dual Wheel Capstan, w/2.5" Grooves, Fine TU38228 120" Portal Take-Up, 30 HP Motor, Controls

**NEW ENGLAND BUTT (NEB) 54 WIRE 31" RIGID STRANDER LINE**, c/w Ceeco 96" Payoff, NEB 54-Wire 31" Rigid Strander, w/12+18+24, 8" Arbors, Max. Design RPM: 12 Head-175, 18 Head-150, 24 Head-150, Min./Max. Lay Values: 1.43"/32.71", 100 HP Motor, NEB 72" Dual Wheel Capstan, w/2.5" Grooves, NEB 120" Shaftless Take-Up, Controls

**NEW ENGLAND BUTT (NEB) 22" 18 WIRE RIGID STRANDER**, w/6+12, 5" Arbors, 40 HP Motor, Change Gears, 48" 6x6 Dual Wheel Capstan w/1" Grooves, Edmands ET-47-24 20" Concentric Taping Head



VAUGHN 11 DIE ROD BREAKDOWN MILL

View our current auction schedule at [www.perfectionindustrial.com](http://www.perfectionindustrial.com)



# STRAND SERVE & CABLER, EXTRUDERS, PAYOFFS & TAKE-UPS



CEECO 24-POSITION 24" STRAND SERVE LINE



CEECO 48" 3-BAY PLANETARY CABLER LINE



CEECO 84" SHAFTLESS PAYOFF



CEECO 48" 3-BAY PLANETARY CABLER



1998  
BARTELL SLTU84-1191-LH 84" SHAFTLESS TAKE-UP



84"  
BARTELL 84" SHAFTLESS TAKE-UP



4.5" 24:1  
DAVIS STANDARD 450S EXTRUDER



2013  
(28) SAMP SV630DM POWERED PAYOFFS



2 AVAILABLE  
FINE 120" TAKE-UP

## STRAND SERVE & CABLER

**CEECO 24-POSITION 24" STRAND SERVE LINE**, c/w Ceeco 84" Shaftless Payoff, s/n 19091, w/20,000 Lb Capacity, Stolberger WOO-26 Shaftless Payoff, s/n 160105, w/40,000 Lb Capacity, Concentric Taping Head, Ceeco Tangential Eccentric Taping Head, Ceeco 24-Wire, 12+12, Strand Server, 24" Reels, 8" Arbors (Ran at 175 RPM), 100 HP Motor, 60" Dual Wheel Capstan, w/2" Grooves, Stolberger 2600mm Shaftless Take-Up

**CEECO 48" 3-BAY PLANETARY CABLER LINE**, c/w Bartell PO84-797-RH 84" Shaftless Payoff, Ceeco 3-Bay 48" Planetary Cabler, w/3" Arbor, Rated 80 RPM, Min./Max. Lay: 6"/72", Eaton 40 HP Dynamatic Motor, 60" Single Wheel Capstan, 1998 Bartell SLTU84-1191-LH 84" Shaftless Take-Up, 20,000 Lb Capacity, Controls and Operator Console, L-R

## EXTRUDERS

**DAVIS STANDARD 600S 6" 24:1 EXTRUDER**, s/n E3128, w/300 HP Motor, Screw, Clamp

**DAVIS STANDARD 6" 24:1 EXTRUDER**, s/n NA, w/Barrier/Maddocks LLDPE Screw

**DAVIS STANDARD 60T 6" 20:1 EXTRUDER**, s/n E2230, w/Clamp

**DAVIS STANDARD 6" 20:1 EXTRUDER**, s/n NA, w/(2) Ea Barrier/Maddocks LLDPE Screws

**DAVIS STANDARD 450S 4.5" 24:1 EXTRUDER**, s/n E-3104

**ENTWISTLE VT1500-24 1.5" 24:1 VERTICAL STRIPPING EXTRUDER**, s/n NA, w/10 HP motor

## (44) PAYOFFS & TAKE-UPS

(13) BARTELL, CEECO, CABLETRADE, STOLBERGER, FINE, PAY-OFFS AND POWER TAKE-UPS, Up to 120" Capacity

(28) 2013 SAMP SV630DM POWERED PAYOFFS

(2) 1998 BEKAERT SAD-7-630 7-POSITION 630MM POWERED PAYOFFS

ENTWISTLE THE 36 DUAL REEL TAKE-UP, s/n 149, w/Allen Bradley Panel View 600 Control

Webcast Bidding Available Through

**BidSpotter.com**

To discuss your requirements for an auction, please call Perfection Industrial +1-847-545-6374



# MISCELLANEOUS WIRE & CABLE MACHINERY, FORKLIFTS

## LIVE WEBCAST AUCTION

AUCTION

1

Assets Surplus to the Ongoing Operations of



**Sale Date:** Thursday, December 7 at 9:00 AM CST

**Location:** 1392 Remmel Dam Road, Malvern, Arkansas 72104

**Inspection:** Wednesday, December 6 from 8:30 AM to 4:30 PM CST or By Appointment



2009

TULSA 31" REWIND LINE

### MISCELLANEOUS WIRE & CABLE MACHINERY

2009 TULSA HSRW 31" REWIND LINE, s/n 22796, w/1,000 Lb Capacity, 2009 DAVIS STANDARD MODEL 57 FLAT 60" CATERPULLER, s/n H-3019, CV NITROGEN-RADIANT CURE TUBE, (3) CV STEAM CURE TUBES, SAMP DRAW BOX FOR TRIALING/DRAWING TRAPEZOIDAL WIRE, w/125 HP Drive, ROBERTSON LEAD STRIPPER w/Stolberger 84" Take-Up, NORDSON ECC301 POWDER APPLICATOR, IMCCO STRAND FILL, BAZELL ASSOCIATES MICROSEPARATOR, FILTERTECH A-1600 CENTRIFUGE FILTER, s/n G-1030, SWEED 510AD SCRAP CHOPPERS, BUTT WELDERS, KOLD WELDERS, POINTERS, CABLE STRIPPERS, ELECTRICAL TEST EQUIPMENT, HIPOTRONICS TEST EQUIPMENT, BIDDLE PD TESTER, AIR WIPES, BAND MARKERS, CAPSTANS, DIAMETER GAUGES, QUALITY CONTROL EQUIPMENT, PRE-HEATERS, SCRAP COILER, DANCERS, ACCUMULATORS, INK JET PRINTERS, LAB EQUIPMENT, ETC.

### FORKLIFTS

2012 ROYAL LIFTMASTERS T300C 30,000 LB LPG FORKLIFT, s/n L1221, w/Hydraulic Fork Positioners

HYSTER H3330XL 30,000 LB LPG FORKLIFT, s/n C019D01621m, w/Hydraulic Fork Positioners

TAYLOR TC200S 20,000 LB LPG FORKLIFT, s/n SJ1-20633, w/Hydraulic Fork Positioners

HYSTER S155XL 15,000 LB LPG FORKLIFT, s/n B204D0587010

(3) HYSTER H100XL 10,000 LB LPG FORKLIFTS, s/n F005D0-3563L, F005A03665H, F005A03662H, w/Cascade 100D-FP Fork Positioners

(4) HYSTER H80XL 8,000 LB LPG FORKLIFTS, s/n F5A1836G, F5A1833G, F005D03583L, F005D03570L, w/Cascade 70D-FPB Fork Positioners

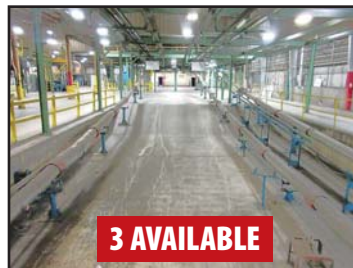


VIEW OF HYSTERS

8 AVAILABLE



DAVIS STANDARD 57 FLAT CATERPULLER



3 AVAILABLE

CV STEAM CURE TUBES



ROBERTSON LEAD STRIPPER LINE



BAZELL ASSOCIATES MICROSEPARATOR



125 HP

SAMP TRAPEZOIDAL DRAW BOX



FILTERTECH A-1600 CENTRIFUGE FILTER



CV NITROGEN-RADIANT CURE TUBES



20,000 LB

TAYLOR TC200S LPG FORKLIFT



EQUIPPED ON MOST FORKLIFTS

CASCADE FORK POSITIONER

Webcast Bidding Available Through

**BidSpotter.com**



30,000 LB

HYSTER H3330XL LPG FORKLIFT

View our current auction schedule at [www.perfectionindustrial.com](http://www.perfectionindustrial.com)



# MACHINE SHOP, FACTORY & SUPPORT EQUIPMENT

## ONLINE AUCTION

AUCTION

2

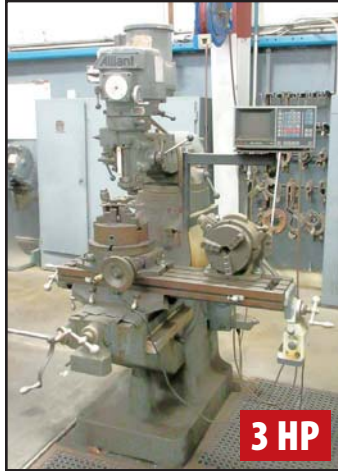
Assets Surplus to the Ongoing Operations of



**Sale Date:** Tuesday, December 12 at 10:00 AM CST

**Location:** 1392 Rimmel Dam Road, Malvern, Arkansas 72104

**Inspection:** Wednesday, December 6 & Thursday, December 7 from 8:30 AM to 4:30 PM CST  
or By Appointment



ALLIANT VERTICAL MILL



CLAUSING COLCHESTER 17" ENGINE LATHE



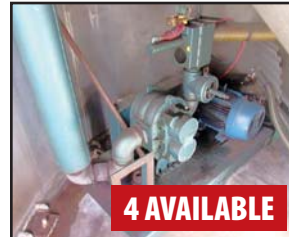
MARLEY NC CLASS COOLING TOWER



MARVEL SERIES 8 MARK I  
BANDSAW



LEBLOND REGAL 24" ENGINE LATHE



UNA-DYN 25 HP  
RAILCAR UNLOADER

### MACHINE SHOP

(2) CLAUSING COLCHESTER 17" AND 15" ENGINE LATHES, LEBLOND REGAL 24" ENGINE LATHE, MONARCH 16" ENGINE LATHE, DS&G ENGINE LATHE, MARVEL SERIES 8 MARK I VERTICAL BANDSAW, MITTS AND MERRILL BROACH, BRIDGEPORT 2 HP MILL, ALLIANT 3 HP MILL

**ALSO:** SHOP PRESS, GRINDERS, MIG AND TIG WELDERS, DRILL PRESSES, BELT/DISC SANDERS, POWER AND HAND TOOLS

### FACTORY & SUPPORT EQUIPMENT

SCHULD 45-45 ALUMINUM SILO, s/n 68733, w/155 Ton Capacity, 12' Diameter x 68', (3) SCHULD 45-40 ALUMINUM SILOS, s/n 66460, 49500-2, 49500-1, w/136 Ton Capacity, 12' Diameter x 68', (4) UNA-DYN NO 425 25 HP RAIL-CAR UNLOADERS, 5,000' ±4" Aluminum Conveying Tube, UNA-DYN DRYER HOPPERS, PARKSON 1000X2 ROTARY SCREEN FILTER, s/n 362-8-90, 2007 MARLEY NC CLASS COOLING TOWER, s/n S20251-1A NC8303BG, DUNHAM-BUSH ACDB050D COOLING TOWER, s/n 13301101A00C, HORIZONTAL AND VERTICAL BALERS, DUMPING SCRAP HOPPERS, SECURITY CAGE, ROLLING SHOP CARTS, MOTORS, DRIVES, SCISSOR TABLES, WHEEL DOLLIES, PARTS

BINS, STRAPPING CADDIES AND TOOLS, JOB BOXES, SHOP AND STEP LADDERS, PERSONNEL LOCKERS, STORAGE RACKS, PNEUMATIC AND ELECTRIC HOSE REELS, CONVEYORS, SHOP FANS, SHOP VACS, JANITORIAL EQUIPMENT AND SUPPLIES, LARGE QUANTITY OF HAND TOOLS, BOLT CUTTERS, CRIMPERS, ALL SIZES OF PIPE WRENCHES, HAND FILES, ELECTRIC DRILLS, CORDLESS DRILLS, RIDGID PIPE BENDERS AND CUTTERS, C CLAMPS, PRY BARS, BESSEY CLAMPS, TOOL ADAPTERS SETS, GREENLEE CABLE CUTTERS, VISE GRIPS, HAMMERS, SCREW DRIVERS, MITRE SAWS, ENERPAC HYD. JACKS, ELECTRIC AND PNEUMATIC GRINDERS, NIBBLERS, SAWS, SANDERS, SLEDGE HAMMERS, ROUTERS, CUT-OFF SAWS, STAPLERS, NAILERS, LEVELS, PNEUMATIC HAMMER AND IMPACT GUNS, BUX DH50RP MAG BASE DRILLS, GRINDER WHEELS, DISCS, BRUSHES, DRILLS, REAMERS, HOLE SAWS, TOOLBOXES, STEEL BANDING AND AUTO STRAPPING TOOLS, LARGE ASSORTMENT OF PIPE BENDING DIES, PERISHABLE TOOLING INCLUDING DRILLS, REAMERS, CUTTERS, CARBIDE INSERTS, TAPS, V FLANGE TOOLS HOLDERS, BORING BARS, MEZZANINES, ETC.



PARKSON ROTARY SCREEN FILTER



SCHULD 12' X 68'  
ALUMINUM SILO

To discuss your  
requirements for an  
auction, please call  
Perfection Industrial  
+1-847-545-6374



# ROLLING STOCK, ELECTRICAL, SPARE PARTS & CONSUMABLES



PETTIBONE MULTIKRANE 30 AT CRANE

## ROLLING STOCK

ATHEY HLD-1 POWER STREET SWEEPER, s/n 00189

PETTIBONE MULTIKRANE 30 AT CRANE, s/n 669A1448

FORD CA414C FARM TRACTOR, s/n BB48226, w/Front End Loader, Mower (Sold Separately)

PLUS, GOLF CARTS, MAINTENANCE TRUCKS, TRICYCLES, PALLET TRUCKS, ETC.



FORD FARM TRACTOR

Online Bidding at [www.perfectionindustrial.com](http://www.perfectionindustrial.com)



## ELECTRICAL, SPARE PARTS & CONSUMABLES

OVER \$2,000,000 REPLACEMENT VALUE OF ELECTRICAL CABLE, ALUMINUM TRACK, MOTORS, FUSES, ELECTRICAL COMPONENTS, HARDWARE, PLUMBING HARDWARE, FACTORY SUPPORT CONSUMABLES

View our current auction schedule at  
[www.perfectionindustrial.com](http://www.perfectionindustrial.com)



# 2 AUCTIONS

## LIVE WEBCAST & ONLINE

To discuss your requirements for an auction, please call Perfection Industrial +1-847-545-6374



**PERFECTION  
Industrial Sales**

Perfection Industrial Sales – 2550 Arthur Ave., Elk Grove Village, IL 60007

ph +1-847-545-6374 • fax +1-847-427-8884

[www.perfectionindustrial.com](http://www.perfectionindustrial.com)



Presorted  
First Class Mail  
U.S. Postage  
PAID  
Eugene, Oregon  
Permit No. 17

# 2 AUCTIONS

## LIVE WEBCAST & ONLINE

Surplus Assets to the Ongoing Operations of

 **General Cable – MALVERN, ARKANSAS**

AUCTION

1

**Sale Date:** Thursday, December 7  
at 9:00 AM CST

**Inspection:** Wednesday, December 6  
from 8:30 AM to 4:30 PM CST  
or By Appointment

AUCTION

2

**Sale Date:** Tuesday, December 12  
at 10:00 AM CST

**Inspection:** Wednesday, December 6 & Thursday,  
December 7 from 8:30 AM  
to 4:30 PM CST or By Appointment

# 2 AUCTIONS

## LIVE WEBCAST & ONLINE

### AUCTION 1 – LIVE WEBCAST

**SALE DATE:** Thursday, December 7 at 9:00 AM CST

**INSPECTION:** Wednesday, December 6 from 8:30 AM to 4:30 PM CST  
or By Appointment

**LOCATION:** 1392 Rimmel Dam Road, Malvern, Arkansas 72104

**TERMS OF SALE:** A 15% buyer's premium will be charged on all assets purchased by buyers attending the sale in person, and any Webcast or Online Buyers will be charged an 18% buyer's premium. Acceptable forms of payment are cash (but only on sale day), cashier's check, company check (with bank letter of guarantee) or wire transfer within 48 hours of the sale close. For any Buyers failing to pay within the 48 hour stated payment period, the buyer's premium will be increased to 18% (bidders attending the Auction in person) or 21% (Webcast or Online Bidders). Everything will be sold to the highest bidder, in accordance with the Auctioneer's customary "Terms of Sale", copies of which will be posted on the premises of the sale and subject to additional terms announced the day of sale. All items are sold "As is, Where is" without any warranty, express or implied.

**PAYMENT:** ALL PURCHASES MUST BE PAID WITHIN 48 HOURS OF THE CLOSE OF SALE. If you intend to pay by wire transfer, we will accept payment the day after the sale ONLY IF a deposit of 25% of the total purchases is made on the day of the sale. Contact our office for wire instructions. Only cash, wire transfer or certified check, payable to Perfection Industrial Sales will be accepted. Company checks payable to

#### HOTELS

Hampton Inn Hot Springs..... (501) 525-7000  
151 Temperance Hill Rd, Hot Springs, AR 71913  
Holiday Inn Express & Suites Malvern..... (501) 467-8800  
2660 River Creek Rd, Malvern, AR 72104  
Courtyard by Marriott Hot Springs..... (501) 651-4366  
200 Marriott Court, Hot Springs, AR 71913

#### NEAREST AIRPORT

Bill & Hillary Clinton National Airport (45 miles from plant)

#### FOR FURTHER INFORMATION

For further information, contact Jennifer Reiner at  
+1-847-545-6374 or [jennifer@perfectionindustrial.com](mailto:jennifer@perfectionindustrial.com)

Perfection Industrial Sales will be accepted only if accompanied by a bank letter of guarantee. All sales are subject to sales tax. Purchasers claiming exemptions from taxes must provide proof satisfactory to the Auctioneer of their entitlement to claim such exemptions. Auction Conducted in U.S. Funds.

**REMOVAL:** All items must be removed no later than Friday, December 22. Removal times are 8:00 AM–4:00 PM, Monday through Friday. Extended hours or weekends may be accommodated by prior appointment.

### AUCTION 2 – ONLINE SALE

**SALE CLOSING FROM:** Tuesday, December 12 at 10:00 AM CST

**INSPECTION:** Wednesday, December 6 & Thursday, December 7  
from 8:30 AM to 4:30 PM CST or By Appointment

**LOCATION:** 1392 Rimmel Dam Road, Malvern, Arkansas 72104

#### TERMS OF SALE

An 18% buyer's premium will be charged on all assets. The buyer's premium will be reduced to 16% for payments made by means of cashier's check, company check (with bank letter of guarantee) or wire transfer within 48 hours of sale close. Credit card payments are limited to a maximum of \$2,000. All items are sold "As is, Where is" without any warranty, express or implied.

#### REMOVAL

All items must be removed no later than Friday, December 22. Removal times are 8:00 AM–4:00 PM, Monday through Friday. Extended hours or weekends may be accommodated by prior appointment.

#### FOR FURTHER INFORMATION

For further information, contact Jennifer Reiner at +1-847-545-6374 or [jennifer@perfectionindustrial.com](mailto:jennifer@perfectionindustrial.com)

View our current auction schedule at [www.perfectionindustrial.com](http://www.perfectionindustrial.com)



**PERFECTION  
Industrial Sales**

Perfection Industrial Sales

ph +1-847-545-6374 • fax +1-847-427-8884

[www.perfectionindustrial.com](http://www.perfectionindustrial.com)

Sale is Being Held in Conjunction With:

Commission



P.O. Box 8456

ph 401-943-3777

[www.commissionbrokers.com](http://www.commissionbrokers.com)

Webcast Bidding Available Through

**BidSpotter.com**

Online Bidding at

[www.perfectionindustrial.com](http://www.perfectionindustrial.com)