

# Online Auction Sales

CNC Horizontal Borers, Machining Centres & CNC Lathes  
by Daewoo, Toshiba & Scharmann, Tool Room, Inspection,  
Welding, Pressure Test, Factory Support & Material Handling  
Equipment available due to Facility Closure at

Cameron Longford Ireland, Manufacturer of Subsea Valves, Chokes & Components

**Cottrill & Co.**  
WORLDWIDE ASSET DISPOSALS

*In Association with:*



**Bidding Ends: Wednesday 19th April 2017 at 3.00pm (UK Time)**



and

**Tuesday 6th June 2017 at 3.00pm (UK Time)**



For Full Information & Viewing Appointments please contact our Office:

Cottrill & Co, 401-407 Tyburn Road, Erdington, Birmingham, West Midlands, B24 8HJ, United Kingdom

• Tel: + 44 (0) 121 328 2424 • Fax: + 44 (0) 121 327 9550 • Email: [info@cottandco.com](mailto:info@cottandco.com) • Website: [www.cottandco.com](http://www.cottandco.com) •

Cottrill & Co is a Trade Name of Cottrill & Associates Ltd



## • Scharmann Alpha 1000M Pinole Horizontal Machining Centre

with Sinumerik 740D Control, Cogsdill Nuneaton ZX-420 TC Profile & Contouring Head, 4" Slide & Cogsdill Roller Burnishing, 125 MBT Twin Slide, 4000 RPM, Y = 1600mm, Z = 2000mm, X = 2000mm, W = 400mm, Light Guard, Pallet Size 1m x 1m (2007)



Viewing by Appointment only, please contact our Office on:

• Tel: + 44 (0) 121 328 2424 • Fax: + 44 (0) 121 327 9550 • Email: [info@cottandco.com](mailto:info@cottandco.com) •



## • Toshiba BTD 110 R16 Twin Pallet Horizontal Boring Machine

with Tosnuc 888 Control, (2) ITS, (1) Davis Heads, X, Y, Z, B, W Axis,  
1650mm x 1400mm Table, CNC Contouring Head,  
Cogsdill Burnisher, Losam Filtermist Probe,  
Pallet Size 1.6m x 1.4m (1998)



For Full Information, Descriptions and Photographs please visit our Website:

• [www.cottandco.com](http://www.cottandco.com) •



## • Daewoo Ace Series HM630 Horizontal Machining Centre

with Fanuc Series 18i-MB Control, 180-ATC,  
Height Pressure, Independent Coolant,  
(3) Extra Hydraulic Motors, Chiller X,Y,Z,B & U Axes,  
Renishaw (2) Dandrea Contouring Head, (4) Extra Pallets (2006)



Viewing by Appointment only, please contact our Office on:

• Tel: + 44 (0) 121 328 2424 • Fax: + 44 (0) 121 327 9550 • Email: [info@cottandco.com](mailto:info@cottandco.com) •



- **Daewoo Ace Series HM630 Horizontal Machining Centre**

with Fanuc Series 18i-m Control, 180-ATC,  
Cooljet Independent Coolant,  
Renishaw Chiller,  
Pallet Size 630mm (2001)



For Full Information, Descriptions and Photographs please visit our Website:

• [www.cottandco.com](http://www.cottandco.com) •



## • Daewoo Puma 500 CNC Turning Centre

with Fanuc 18i Control,  
Hydraulic Steady,  
18" Magnetic Chuck,  
3-Jaw Chuck, Tooleye,  
12-Station Turret,  
Tailstock, 3-Point Steady &  
Swarf Conveyor (2001)



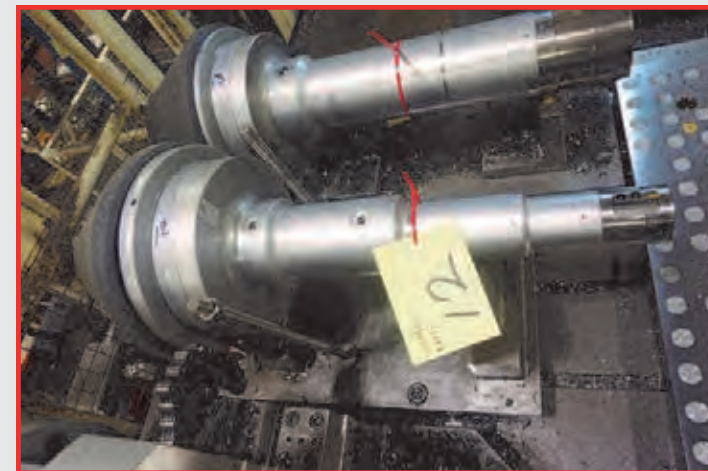
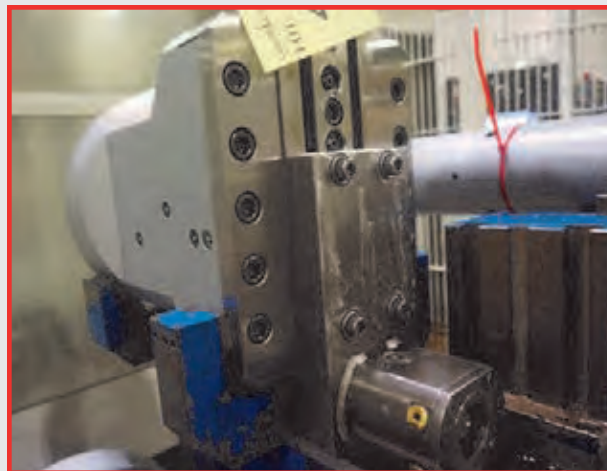
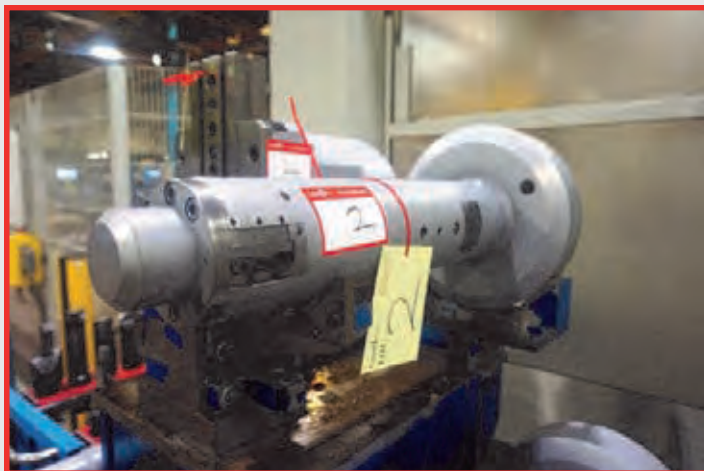
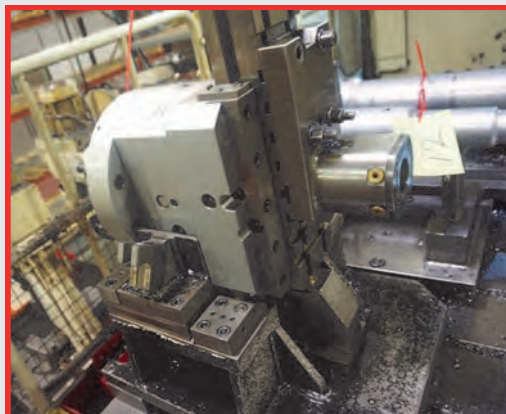
Viewing by Appointment only, please contact our Office on:

• Tel: + 44 (0) 121 328 2424 • Fax: + 44 (0) 121 327 9550 • Email: [info@cottandco.com](mailto:info@cottandco.com) •



## Qty Cogsdill Tooling Suitable for Scharmann Horizontal Machining Centre & Toshiba Horizontal Borer

- Cogsdill ZX-420-TC Boring Tool, Profile & Contouring Head (2007)
- Cogsdill Nuneaton T7371 with 125 MBT Twin Slide Tool
- Cogsdill 140 MBT Twin Slide Tool
- Cogsdill N98 0421.0 60 BMT Twin Slide Tool
- Cogsdill 125 BMT Twin Slide Tool
- Cogsdill T7378 MBT-80 Boring Tool
- Cogsdill S01053 MBT 50-S Boring Tool
- Cogsdill S01051-GA MBT 75 Seat Pocket Tool
- Cogsdill Boring Tool
- Cogsdill - 1DIV = 0.005 11/11 > +
- Cogsdill SK50 - SL25 - 80



For Full Information, Descriptions and Photographs please visit our Website:

• [www.cottandco.com](http://www.cottandco.com) •



- **Nikken** Sethy-306 Elbo Control Tool Setter. S/No. 4310 (2008)
- **Idea** IM 180 H/S Machine Wash (2002), Doorsize 1.6m Width x 900mm High x 2m Depth Approx.
- **Mannings** Oven, Basket Sizes 850mm x 1150mm
- **Vivex** VXCS 1500 Cleaning & Recycling Plant with 10 drop down units (2000)
- Qty Test Rigs



Viewing by Appointment only, please contact our Office on:

• Tel: + 44 (0) 121 328 2424 • Fax: + 44 (0) 121 327 9550 • Email: [info@cottandco.com](mailto:info@cottandco.com) •



- **Bode Type 3/RMB 2.6m x 2.5m Multi-Clad System**

with Welding Power Sources, Extraction, Miller Welder & (2) Tables (2007)



- **PEC Multi-Clad System**

with Welding Power Sources, Miller Welder & (2) Tables (2000)



For Full Information, Descriptions and Photographs please visit our Website:

• [www.cottandco.com](http://www.cottandco.com) •

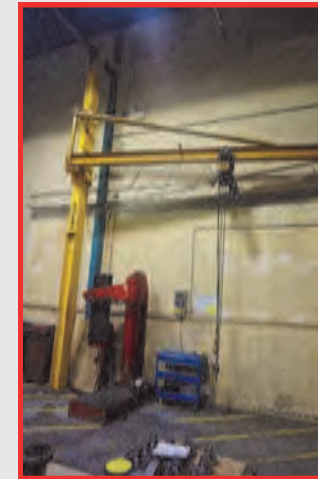


# Overhead and Jib Cranes

Cottrill & Co.



- **Ennis Engineering** Crane, SWL 1 Ton with GLS Hoist
- **Morris** Crane, SWL 3 Ton with Morris Hoist, Width 10m, Length 13, Height 5.5m.
- **Morris** Crane, SWL 3 Ton with Morris Hoist, 10 ½ m width x 6m high approx.
- **Morris** Crane, SWL 3 Ton with Morris Hoist, 10 ½ m width x 6m high approx.
- **(2) Crane Care** Cranes, SWL 1 Ton with GLS Hoist. 15m length x 6m width x 6.2m high approx
- Crane, SWL 2 Ton with Morris Hoist
- Crane, SWL 3 Ton with Stahl ST 30 Hoist
- **Abus** Crane, SWL 3.2 Ton with Abus Hoist
- Free Standing Crane with SWL 1.5 Ton with GLS Hoist. 4160mm Width, 680mm Length, 3.2m High Approx.
- (2) Cranes, SWL 800kgs, 4.7m width x 16m length x 5.5m (H) approx.
- (2) Cranes, SWL 800kgs, 2.4m width x 16m length x 5.5m (H) approx.
- Crane, SWL 1600kgs, 2.4m width, 16m length x 5.5m (H) approx.
- Jib Crane, SWL 1 Ton with GLS Hoist. 5.3m Height Approx. 5m Length Approx.
- Jib Crane, SWL 2 Ton with Demag Hoist, 4.5m Height Approx, 4.5m Length Approx.
- Jib Crane. SWL ½ Ton with GLS Hoist, 4m Height Approx, 4m Length Approx.
- **Demag** Jib Crane, SWL 2 Ton with Demag Hoist, 5m Height Approx, 7m Length Approx.
- Jib Arm with 500kg Morris Hoist. 6.5m Length Approx.
- Jib Arm, SWL ½ Ton with GLS Hoist. 5m Length Approx.
- Jib Crane, Motorised Movement, SWL 2 Ton with Demag Hoist, 6.2m Height Approx, 6.5m Length Approx.
- Jib Crane, Motorised Movement, SWL 2 Ton with Demag Hoist. 6.2m Height Approx, 6.5m Approx.
- Free Standing Crane, SWL 1 ½ Ton, 7m Length Approx, 4.3m Width Approx, 4.5m Height Approx.
- Qty Track for Cranes



Viewing by Appointment only, please contact our Office on:

• Tel: + 44 (0) 121 328 2424 • Fax: + 44 (0) 121 327 9550 • Email: [info@cottandco.com](mailto:info@cottandco.com) •

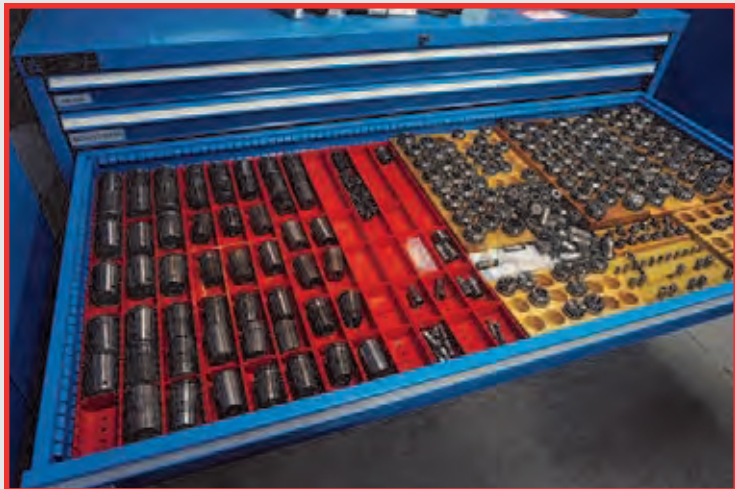


# Large Qty Tooling

Cottrill & Co.



• Qty BT & CAT40/50 Tooling, Boring Bars, Taps, Drills, Workbenches, Dynamic Shelving, Portable Offices/Buildings plus many more items



For Full Information, Descriptions and Photographs please visit our Website:

• [www.cottandco.com](http://www.cottandco.com) •





Viewing by Appointment only, please contact our Office on:

• Tel: + 44 (0) 121 328 2424 • Fax: + 44 (0) 121 327 9550 • Email: [info@cottandco.com](mailto:info@cottandco.com) •



# Miscellaneous Items



In Association with:



**Cottrill & Co** have considerable international as well as domestic expertise in asset disposals across a diverse range of industries and sectors. Whether you are disposing of an individual asset to a complete facility—**Cottrill & Co** can be relied upon to maximise your asset values.

If you have equipment that is no longer required due to **New Investment** or *If you or your company are facing...*

- **Factory or Production Relocation** • **Factory Closure** • **Change of Ownership or Retirement** • **General Restructuring**

**Cottrill & Co** will develop and implement an individual and customised solution that could include:

- **Sale by Online Auction** • **Sale by Private Treaty** • **Sale by Tender** • **Outright Purchase**

To find out more about **Cottrill & Co's** services and how we can help you please call our office on: **+ 44 (0) 121 328 2424** or email us at **info@cottandco.com**

**If you require Asset Finance or Short Term Funding please contact us on + 44 (0) 121 328 2424**

**Please Note:** Although information has been obtained from reliable sources **Cottrill & Co** make no warranty or guarantee, expressed or implied, as to the accuracy of the information contained in this flyer. Photographs are taken prior to lotting and lots are sold as viewed and described in the Auction Catalogue.

**For Full Information & Viewing Appointments please contact our Office:**

• **Tel: + 44 (0) 121 328 2424** • **Fax: + 44 (0) 121 327 9550** • **Email: info@cottandco.com** • **Website: www.cottandco.com**