



PERFECTION
Industrial Sales

ONLINE AUCTION

FEATURING: Wheelabrator A3-48712 Flow-Through Shotblast System, Williams Car Bottom Stress Relieving Furnaces, Automatic Feed Company 72" Plate Straightening System, Wolf Robotic Traveling Head Welding Systems, Aronson Headstock & Tailstock Welding Positioners from 12,000 to 90,000 LB,

Surplus Assets Available
to the Ongoing
Operations of

CATERPILLAR AURORA

Harris & Fanuc Robotic Torch Tables, 2500 HP & 500 HP Air Compressors, American, Almco, & Magnus Parts & Batch Washers, Fume Extractors, Lincoln Welders, ALM 4-Post Lift System & More



WHEELABRATOR A3-48712 FLOW THROUGH SHOTBLASTER



WILLIAMS CAR BOTTOM STRESS RELIEVING FURNACE



110,000 LB ABB ROBOTIC WELDING SYSTEM



WOLF ROBOTIC POSITIONER SYSTEM

Sale Closing Date: Tuesday, July 28, 2015 at 2:00 PM CDT

Sale Location: 325 South Route 31, Montgomery, Illinois 60538

Inspection: By Appointment Only. See information on last page for details.



PERFECTION
Industrial Sales

Perfection Industrial Sales
ph 847-427-3333 • fax 847-427-8884
www.perfectionindustrial.com

Online Bidding at
www.perfectionindustrial.com

SHOTBLAST SYSTEM, STRESS FURNACES, PLATE STRAIGHTENER



2006

**WHEELABRATOR A3-48712
FLOW THROUGH
SHOTBLASTER**

**SHOTBLAST SYSTEM
WHEELABRATOR A3-48712
FLOW-THROUGH
SHOTBLASTER**, S/N 3295
(2006), 48" W x 96" H Opening
Size, 440" x 48" Car Size,
(8) Slingers, Blow-Off Chamber,
25 HP Slinger Motors, Work Car
Assembly, Roller Conveyor

INSPECTION

Inspection will be held by
appointment only. To schedule an
inspection appointment,
please contact Alec Story at
(708) 606.3240 or via email at
John@PerfectionIndustrial



2007

WILLIAMS CAR BOTTOM STRESS RELIEVING FURNACE

STRESS RELIEVING FURNACES

WILLIAMS CAR BOTTOM STRESS RELIEVING FURNACE, S/N 02668, and 02667,
(2007), (2) 138" W x 37' Long, 114" Door Opening Height, 1,292 Degrees F Operating
Temperature, Gas Heat Source, 3-Zone, Allen Bradley Panelview Plus 1250 PLC,
Eurotherm Chessell 610 GA, Krom Schroder Burner Controls, Fiber Insulation,
(8) Burners Per Side, Downdraft Enclosures, HD Roof Mounted Air Handler



PLATE STRAIGHTENER

**AUTOMATIC FEED COMPANY 72" PLATE STRAIGHTENER
SYSTEM**, Equipped w/72-180 Load Conveyor System, S/N 91036,
72-180 Automatic De-Stacking Section, S/N 91037, 72 Entry Roller
Table, S/N 91038, 7-872 Plate Straightener, S/N 91039, 72 Gauging
System, S/N 91040, 72 Exit Roller Table, S/N 91041, 72-180
Automatic Stacking System, S/N 91042, 72-180 Unload Conveyor
System, S/N 91043, 72-144 Full Pallet Load Section, S/N 91044, (2)
Empty Pallet Conveyor, S/N 91045 and 91046, 72-144 Full Pallet
Unload Section



AUTOMATIC FEED COMPANY PLATE STRAIGHTENER SYSTEM

To discuss your requirements for an auction, please call Perfection Industrial **847.427.3333**

ROBOTIC WELDING POSITIONER SYSTEMS



WOLF ROBOTIC POSITIONER SYSTEM

ROBOTIC WELDING POSITIONER SYSTEMS

WOLF ROBOTIC SYSTEM W/TRAVELING ROBOT AND HEAD/TAILSTOCK,

S/N 44-28160, (2007), 6-Axis Robot, 393" Robot Horizontal Travel, 52" Robot Throat from Column to Center, ABB S4C Plus Control, Lincoln Wire Feeder, Dual Wire Feed

Gun, Bernard NCS-10 Gun Tip Cleaner, Dual Spool Wire Shelf, Miller Coolmate Chiller, Wolf Head and Tailstock Positioners w/In-and-Out Movement, 84" Dia. x 363" Max. Part Length, Positioner Tilting Mechanism, Lincoln Powerwave 655 Welder



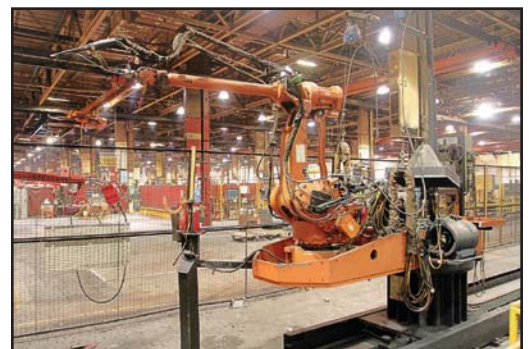
View our current auction schedule at www.perfectionindustrial.com



WOLF ROBOTIC POSITIONER SYSTEM

WOLF ROBOTIC SYSTEM W/ABB IRB 4400L/10 TYPE B TRAVELING ROBOT AND HEAD/TAILSTOCK,

S/N 44-26954, (2006), 6-Axis Robot, 393" Robot Horizontal Travel, 52" Robot Throat from Column to Center, ABB S4C Plus Control, Lincoln Wire Feeder, Dual Wire Feed Gun, Bernard NCS-10 Gun Tip Cleaner, Dual Spool Wire Shelf, Miller Coolmate Chiller, Wolf Head and Tailstock Positioners w/In-and-Out Movement, 84" Dia. x 363" Max. Part Length, Positioner Tilting Mechanism, Lincoln Powerwave 655 Welder



ROBOTIC WELDING POSITIONER SYSTEMS



CLOOS ROBOTIC POSITIONER SYSTEM



ROBOTIC WELDING POSITIONER SYSTEMS, CONTINUED

**CLOOS ROMAT 310
ROBOTIC WELDING CELL
W/POSITIONERS**, (1998),
6-Axis Robot, 280" Robot
Horizontal Travel, Cloos Head
and Tailstock Positioners
w/In-and-Out Movement,
88" Dia. Swing x 276" Max.
Part Length, 34,000 Lb
Positioner Capacity,
Equipped w/Cloos Control,
Cloos Wire Feed, Gun, and
Tip Cleaner, Dual Spool Wire
Shelf, Cloos GLC 603 Quinto
Power Supplies



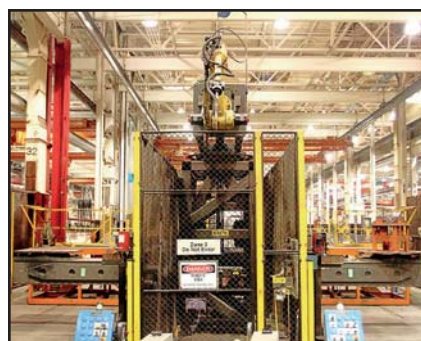
2002

FANUC ROBOTIC POSITIONER SYSTEM



INSPECTION

Inspection will be held by appointment only. To schedule an inspection appointment, please contact Alec Story at (708) 606.3240 or via email at John@PerfectionIndustrial.com



**FANUC ROBOTIC
WELDING SYSTEM W/
HEAD AND TAIL STOCK**,
S/N 118834, (2002), 6-Axis
Robot, 267" Horizontal
Travel, 60" Swing Radius
Vertical Travel, Fanuc Arc
Mate Robot w/120iB
Control, Lincoln Wire
Feeder, Dual Spool Wire
Shelf, Miller Coolmate
Chiller, Aronson Positioner
w/Approx. 30,000 Lb
Capacity, 295" Max.
Opening Between Head
and Tailstock, Lincoln
Powerwave 655 Welder

To discuss your requirements for an auction, please call Perfection Industrial **847.427.3333**

ROBOTIC WELDING POSITIONER SYSTEMS, HEADSTOCK/TAILSTOCK WELDING POSITIONER SETS

ROBOTIC WELDING POSITIONER SYSTEMS, CONTINUED

FANUC ROBOTIC WELDING SYSTEM W/HEAD AND TAIL STOCK, S/N 099076, (2002), 6-Axis Robot, 267" Horizontal Travel, 60" Swing Radius Vertical Travel, Fanuc Arc Mate Robot w/120iB Control, Lincoln Wire Feeder, Dual Spool Wire Shelf, Miller Coolmate Chiller, Aronson Positioner w/Approx. 30K Lb Capacity, 295" Max. Opening Between Head and Tailstock, Lincoln Powerwave 655 Welder



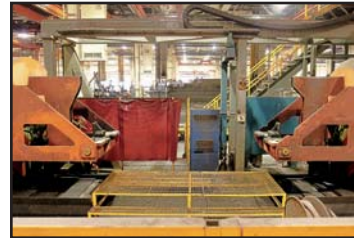
FANUC ROBOTIC POSITIONER SYSTEM



90,000 LB CAPACITY ARONSON HS45 TS45 HEADSTOCK TAILSTOCK WELDING POSITIONER



80,000 LB CAPACITY ARONSON HS40GE TS20GE HEADSTOCK TAILSTOCK WELDING POSITIONER SET



(15) HEADSTOCK/TAILSTOCK WELDING POSITIONER SETS

110,000 LB ABB ROBOTIC WELDING SYSTEM W/HEAD/TAILSTOCK POSITIONERS, S/N 05560, (1998), 55,000 Lb Head Stock Capacity, 55,000 Lb Tailstock Capacity, 110,000 Lb Total Weight Capacity at 7.71" CG, 88,000 Lb at 8.81", 72" Dia. Head/Tailstock Table Size, .71 RPM Positioner Max. Rotational Speed, 669" Robot Horizontal Travel, 137.79" Robot Column Vertical Travel, 257" Robot Column Max. Vertical Distance to Floor, 120" Min., 61" Robot Horizontal Reach, 81.3" Robot Vertical Reach, 44 Lb Robot Payload, Equipped w/(2) ABB 2400-16 Robots, (2) ABB IRBX2400 External Axis Controls, (2) ABB ARB240016 M97A Robot Controls

90,000 LB CAPACITY ARONSON HS45 TS45 HEADSTOCK/TAILSTOCK WELDING POSITIONER SET, S/N 7940/7926, 540,000 Ft Lb Rotation Torque, 54" Square Table, 12" Dia. Hole Size, 30" Riser Size, Pendant Control, 460/3/60 Electrical

80,000 LB CAPACITY ARONSON HS40GE/TS20GE HEADSTOCK/TAILSTOCK WELDING POSITIONER SET, S/N 8727/9782, 20,000 Lb at 12" Headstock and Tailstock Capacity, 240,000 Lb Rotation Torque, Constant Speed, Geared Elevation, Operating Pendant

(3) 60,000 LB CAPACITY ARONSON HS30GE/TS30GE HEADSTOCK/ TAILSTOCK WELDING POSITIONER SETS, S/N 769/765, 9610/764, and 7611/ Unknown, 30,000 Lb at 12" Headstock and Tailstock Capacity, 40,000 Lb Rotation Torque, 48" Table Size, 52" Elevation, Constant Speed, Geared Elevation, Operating Pendant



60,000 LB CAPACITY ARONSON SETS



HEADSTOCK/TAILSTOCK WELDING POSITIONER SETS



60,000 LB CAPACITY ARONSON SETS



40,000 LB CAPACITY ARONSON HS20GE TS20GE HEADSTOCK TAILSTOCK WELDING POSITIONER SET



FOR FURTHER INFORMATION

For further information contact John Bopp at (708) 606-3240 or Email: John@PerfectionIndustrial.com

INSPECTION

Inspection will be held by appointment only. To schedule an inspection appointment, please contact Alec Story at (708) 606.3240 or via email at John@PerfectionIndustrial.com

HEADSTOCK/TAILSTOCK WELDING POSITIONER SETS, CONTINUED

(4) 40,000 LB CAPACITY ARONSON HS20GE/TS20GE HEADSTOCK/ TAILSTOCK WELDING POSITIONER SETS, S/N 9963/9928, 7624/7615, 7736/778, and 7732/77, 20,000 Lb at 12" Headstock and Tailstock Capacity, 240,000 Lb Rotation Torque, 36" Dia. Table Size, 52" Elevation, Constant Speed, Geared Elevation, Operating Pendant

(3) 32,000 LB CAPACITY ARONSON HS16GE/TS16GE HEADSTOCK/ TAILSTOCK WELDING POSITIONER SETS, S/N 766/764, 9532/9519, and N/A/766, 16,000 Lb at 12" Headstock and Tailstock Capacity, 192,000 Lb Rotation Torque, 36" Dia. Table Size, 52" Elevation, Constant Speed, Geared Elevation, Operating Pendant



60,000 LB CAPACITY ARONSON SETS

20,000 LB CAPACITY ARONSON HS10GE/ TS10GE HEADSTOCK/ TAILSTOCK WELDING POSITIONER, S/N 8259, 10,000 Lb at 12" Headstock and Tailstock Capacity, 20,000 Lb Total Weight Capacity, 36" Dia. Table Size, 52" Elevation, Constant Speed, Geared Elevation, Operating Pendant

12,000 LB CAPACITY ARONSON HS6VA HEADSTOCK/ TAILSTOCK WELDING POSITIONER, S/N 41585, 6,000 Lb at 12" Capacity, 48" x 48" Table Size w/(4) Radial Slots, 72,000 Lb Max. Rotation Torque, Variable Speed Table Drive

To discuss your requirements for an auction, please call Perfection Industrial 847.427.3333



40,000 LB CAPACITY ARONSON SETS



32,000 LB CAPACITY ARONSON HS16GE TS16GE HEADSTOCK TAILSTOCK WELDING POSITIONER SET

WELDING POSITIONER, WELDING LIFT STATION, CNC HORIZONTAL MACHINING CENTERS, CNC LATHE, BURNING TABLES, AIR COMPRESSORS



25,000 LB CAPACITY ARONSON GE250CS
TILT ROTATION ELEVATION POSITIONER



CINCINNATI TC-40 HORIZONTAL CNC
MACHINING CENTER



CINCINNATI MAXIM 630 HORIZONTAL
CNC MACHINING CENTER



CINCINNATI CINTURN 185 CNC SLANT BED LATHE

WELDING POSITIONER

25,000 LB CAPACITY ARONSON GE250CS 25 000 LB TILT ROTATE ELEVATION POSITIONER, S/N 817, 25,000 Lb at 12" Capacity, 300,000 Lb Rotation Torque, 60" x 60" Table Size, 33" Elevation, Constant Speed, Operating Pendant

WELDING LIFT STATION

AIRFLOAT SYSTEM LIFT STATION FOR WELDING, (2000), 8" Max. Lift Height, 1000 Lb Max. Weight Capacity, 6' Travel Height, w/Guard Rail, Swivel Gate, Ground Traverse Wheel

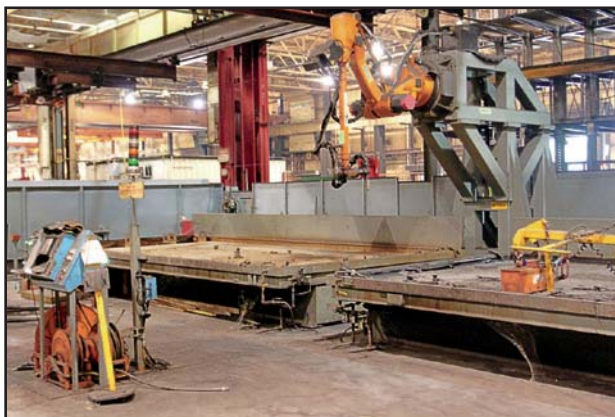
CNC HORIZONTAL MACHINING CENTERS

CINCINNATI TC-40 HORIZONTAL MACHINING CENTER, S/N ZB00B0103-001, (2005), 472" X-Axis Travel, 90" Y-Axis Travel, 40" Z-Axis Travel, 4,000 RPM Max. Spindle Speed, 90 Position Tool Changer, (2) Tables, 1 Degree B-Axis Indexing, 2-92" Spindle to Top of Pallet, 80" x 80" Rotary Table Size, Equipped w/(1) 96" x 128" x 12" Thick Bed Plate, (1) 128" x 96" Angle Plate, 50 HP Main Spindle Motor, High Pressure Thru Spindle Coolant, Chip Conveyor, Acramatic 2100 CNC Control

CINCINNATI MAXIM 630 CNC HORIZONTAL MACHINING CENTER, S/N 3632C0193-0055, (1993), 40" X-Axis Travel, 31.5" Y-Axis Travel, 31.5" Z-Axis Travel, 7,000 RPM Spindle Speed, Cat 50 Spindle Taper, 40 Tool Changer Positions, (2) 24.8" Pallets, 3000 Lb Capacity Per Pallet, Equipped w/Rotary Type Pallet Changer, 33 HP Main Spindle Motor, High Pressure Thru Spindle Coolant, Acramatic 950 CNC Control

CNC LATHE

CINCINNATI CINTURN 185 CNC SLANT BED LATHE, S/N 5305518800001-RL98, 18" Max. Swing, 14" X-Axis Travel, 60" Z-Axis Travel, A1-10 Spindle Nose, 3" Spindle Hole, 1,800 RPM Max. Spindle Speed, 7 Position Crown, Equipped w/Face Plate Driver, Chip Conveyor, 30 HP Motor, Acramatic 2100 CNC Control



FANUC ROBOTIC OXY ACETYLENE BURNING TABLE

BURNING TABLES

FANUC ROBOTIC OXY ACETYLENE BURNING TABLE, S/N 109054, 6-Axis Robot, 540" (45') Robot Horizontal Travel, 132" x 252" (2) Water Table, Fanuc GMF S500 Robot, GMF Control, Oxygen Acetylene Valves and Torch Head, HT 4001 Chiller

FANUC ROBOTIC OXY ACETYLENE BURNING TABLE, S/N Unknown, 6-Axis Robot, 106" Robot Horizontal Travel, 48" x 120" Water Table, Fanuc Arc Mate 120i Robot, Fanuc Arc Mate R-J2 Control, Oxygen Acetylene Valves and Torch Head

HARRIS CALORIFIC TORCH TABLE, S/N G-418, 120" x 72" Water Table, Variable Speed, 2-Head



AIR COMPRESSORS

2,500 HP INGERSOLL RAND CENTAC 4C130M4 AIR COMPRESSOR, S/N M76-0954A, 110 PSIG Discharge Pressure, 1,785 RPM Rated Speed, 14.1 PSIA Intake Pressure

500 HP CLARK ICMB-2 COMPRESSOR POWERED BY CAT G398 12 CYL DIESEL, S/N 83605/83608, 115 PSIG, 500 HP Caterpillar Nominal Drive Motor, Caterpillar G398 Diesel Engine, Clark Accumulators, Lufkin Gear Box



INGERSOLL RAND CENTAC 4C130M4 AIR COMPRESSOR



CLARK ICMB-2 COMPRESSOR



To discuss your requirements
for an auction, please call
Perfection Industrial **847.427.3333**

BATCH WASHERS & PARTS WASHER, PIN MARKING SYSTEM, WELDING SMOKE & FUME EXTRACTORS, TOOL PRESETTER, INSPECTION



MAGNUS MIJI LIFT HD PARTS WASHER

BATCH WASHERS & PARTS WASHER

ALMCO RPW-24E STAINLESS BATCH WASHER, S/N 040806, (2008), 32" Dia. Table, 800 Lb Table Capacity, 30" Max. Height on Table, 200-Gal. Tank Capacity, 5 HP Pump, 160 Degree Adjustable Temp, Electric Power, Variable Speed Inspection

AMERICAN 1500 BATCH WASHER, S/N 86-198, 52" x 52" x 36" Work Capacity, 140 Degree F Wash Temperature, Electric Heat Source, Load/Unload Station, 460/3/60 Electrical

MAGNUS MIJI LIFT HD PARTS WASHER, S/N N/A, w/Filter System and Lift System

PIN MARKING SYSTEM

PRYOR MARKTRONIC RAPIDOT 288 PIN MARKER, S/N RAPIDOT288-0398, (1996), 10" x 6" Max. Character Spacing, .040 to .63" Character Speeds, 12 Character/Sec Max., .022" w/150S Pins Max. Marking Depth, 8" Max. Part Height Under Stylus, w/Keyboard/Controller

WELDING SMOKE & FUME EXTRACTORS

UNITED AIR SPECIALISTS SFC2-2 DUST COLLECTOR/SMOKE EXTRACTOR, S/N 60062809, (2008), 800 CFM, 4-Cartridge, 5 HP, 3,600 RPM

LINCOLN ELECTRIC STATIFLEX FUME COLLECTION SYSTEM

TOOL PRESETTER

ZOLLER V720 TOOL PRESETTER, S/N 074, 20" Swing, 22" Max. Height, 50 NT Spindle Taper

OTHER MACHINERY AVAILABLE: Ecoa and Rol-Lift Manlifts, Lincoln CV655 Welding Power Supplies w/Booms, ALM 4-Post Lifts, and More



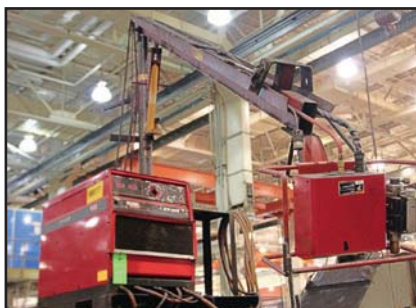
ALMCO RPW-24E STAINLESS BATCH WASHER



UNITED AIR SPECIALISTS SFC2-2 DUST COLLECTOR



LINCOLN ELECTRIC STATIFLEX FUME COLLECTION SYSTEM



LINCOLN CV655 WELDERS



SHEFFIELD ENDEAVOR 3 PLUS CMM



SHEFFIELD CORDAX RS-50 DCC CMM

INSPECTION

SHEFFIELD ENDEAVOR 3 PLUS CMM, S/N R-0683-0207, (2007), Measuring Capacity of 60"-X, 36"-Y, 40"-Z, Renishaw PH10MQ Probe Head w/Probe Changer, Probe Rack w/(3) Heads, Pendant Control, 10" Thick Granite Table, 40" Between Housings

SHEFFIELD CORDAX RS-50 DCC CMM, S/N A-0717-12-92, (1992), Measuring Capacity of 43"-X, 52"-Y, 30"-Z, Renishaw PH10MQ Probe Head w/Probe Changer, Probe Rack w/(5) Heads, Pendant Control, Steel Grooved Table, 54" Between Housings, Renishaw PHC 10 Control

To discuss your requirements for an auction, please call Perfection Industrial
847.427.3333

View our current auction schedule at www.perfectionindustrial.com

*INSPECTION

Inspection will be held by appointment only. To schedule an inspection appointment, please contact Alec Story at (708) 606.3240 or via email at John@PerfectionIndustrial.com

REMOVAL

All items must be removed by Friday, August 21.

FOR FURTHER INFORMATION

For further information contact John Bopp at (708) 606-3240 or Email: John@PerfectionIndustrial.com

TERMS OF SALE

Payment: An 18% buyer's premium will be charged on all assets. The buyer's premium will be reduced to 15% for payments made by means of cash, cashier's check, company check (with bank letter of guarantee) or wire transfer within 48 hours of sale close. Credit card payments are limited to a maximum of \$2,000. All items are sold "As is, Where is" without any warranties expressed or implied.

Sale Closing Date: Tuesday, July 28, 2015 at 2:00 PM CDT

Sale Location: 325 South Route 31, Montgomery, Illinois 60538

Inspection: By Appointment Only. See information above* for details.



PERFECTION Industrial Sales

Perfection Industrial Sales
ph 847-427-3333 • fax 847-427-8884
www.perfectionindustrial.com

Online Bidding at
www.perfectionindustrial.com