

# LIVE WEBCAST <sup>ONLINE ONLY</sup> AUCTION

Assets Surplus to the Ongoing Operations of a

## **MAJOR** *Wire & Cable* **MANUFACTURER** — PHASE 2 —

### **SALE DATE**

Tuesday, September 12, at 10:00 AM CT

### **SALE LOCATION**

1430 12th Street, Waukegan, IL 60085

### **INSPECTION**

Monday, September 11, from 8:30 AM to 4:00 PM CT, by appointment only



MERRITT DAVIS 4.5" EXTRUDER



COOK BH48 S.T. CABLER W/BINDER HEAD

**PRE-AUCTION  
OFFERS INVITED  
ON MAJOR ASSETS**

**COMPLETE CATALOG & INFORMATION:**

<https://perfection.global/6127>

**FEATURING:** (6) Cablers - up to 1250mm, (11) Extruders & Co-Extruders - up to 4.5", Payoffs & Takeups - up to 84", Caterpullers, Accumulator/Dancers, Rewind Lines, Spoolers, (8) Braiders - up to 48 Carrier, Assorted Wire & Cable Support Machinery and Equipment, Steel Reels - Assorted Sizes, Factory Support Equipment



**PERFECTION  
Industrial Sales**

Perfection Industrial Sales IL Firm Lic. #444.000438, Steve Kleba IL Auctioneer Lic. #441.001778

**Perfection Industrial Sales**  
ph +1-847-545-6374 • fax +1-847-427-8884  
[www.perfectionindustrial.com](http://www.perfectionindustrial.com)

In  
conjunction  
with:

**Commission  
Brokers**



# (6) CABLERS

## (6) CABLERS

**GODDERIDGE 1250MM D.T. CABLER**, s/n 30-006, w/ 150HP DC Motor, Change Gears, Operator Console, Drive Cabinet

**COOK BH-48 S.T. CABLER**, s/n 1298, w/ 50HP Motor, COOK BWT-1 Binder Head

**48" ROTATING DRUM TWISTER**, s/n 310, w/ 8" Reel Arbor, 30HP AC Motor, Operator Panel, Drive Cabinet

**CARTER LLOYD INC 30" D.T. CABLER LINE**, w/ 4-Wire 30" Powered Payoff, Pre-Twister, Drain Wire Payoff, Longitudinal Tape Stand, 10HP AC Motor (**LLOYD & BOUVIER Rebuild**)

**MORISON MACHINERY 30" D.T. CABLER LINE**, w/ 4-Wire 30" Powered Payoff, Pre-Twister, Drain Wire Payoff, Longitudinal Tape Stand, 10HP AC Motor (**LLOYD & BOUVIER Rebuild**)

**NE/CFL 30" D.T. CABLER LINE**, w/ 4-Wire 30" Drag Payoff, Longitudinal Tape Stand, 10HP DC Motor (**LLOYD & BOUVIER Rebuild**)



COOK BH48 S.T. CABLER W/BINDER HEAD



48" ROTATING DRUM TWISTER



GODDERIDGE 1250MM D.T. CABLER



CARTER LLOYD INC 30" D.T. CABLER LINE



MORISON MACHINERY 30" D.T. CABLER LINE

**PRE-  
AUCTION  
OFFERS  
INVITED  
ON  
MAJOR  
ASSETS**



# (11) EXTRUDERS, TAKE-UPS, SPOOLERS & PAY-OFFS

## (11) EXTRUDERS

**MERRITT DAVIS 4.5" 24:1 L/D EXTRUDER**, s/n WC02651-01, w/ Screw, 14:1 Gearbox Ratio, 200HP DC Motor, Hopper Loader, NO Crosshead

**ENTWISTLE 4.5" 24:1 L/D EXTRUDER**, w/ Screw, 150HP DC Motor, Hopper, Hopper Loader

**(2) MERRITT DAVIS 3.5" 24:1 L/D EXTRUDERS**, w/ Screw, 150HP AC Motor, Drive

**DAVIS STANDARD 35T 3.5" 20:1 L/D EXTRUDER**, s/n E1875, S.O. 27794C, Screw, NO Motor

**DAVIS STANDARD 35IN35 3.5" 24:1 L/D EXTRUDER**, s/n M5065, S.O. 05861, w/ Screw, 17.39:1 Gearbox Ratio, 100HP AC Motor, Hopper Loader

**WELEX 200-24:1 2" 24:1 L/D NYLON EXTRUDER**, s/n 492, w/ Screw, Crosshead, 30HP AC Motor, PREMIER Hopper Loader

**MPM 2" 20:1 NYLON EXTRUDER**, w/ Screw, Crosshead, Motor

**(2) DAVIS STANDARD 1.5" STRIPING EXTRUDERS**, w/ 10HP Vector AC Motors, Operator Control Station, (2) OMRON 5-Zone Extruder Controllers

**DAVIS STANDARD 35T 3.5" 20:1 L/D EXTRUDER**, s/n E1400, S.O. 21938C, w/ Screw, 75HP AC Motor



DAVIS STANDARD 35T 3.5" 20:1 L/D EXTRUDER



(2) MERRITT DAVIS 3.5" EXTRUDERS



DAVIS STANDARD 35IN35 3.5" EXTRUDER



DAVIS ELECTRIC 72" SHAFTLESS TAKE-UP

## TAKE-UPS, SPOOLERS & PAY-OFFS

**(2) MERRITT DAVIS TURA 84 84" TRAVERSING TAKE-UPS**, s/n 0-003-261, 0-003-260, w/ 5HP Motors, Guide Stands

**DAVIS ELECTRIC TAP-30 PARALLEL AXIS DUAL REEL TAKE-UP**, s/n 0002055

**ENTWISTLE SD50P4 48" DUAL REEL TAKE-UP**, s/n 104, w/ 5HP Motor

**DAVIS STANDARD 84" SHAFTLESS TAKE-UP**, w/ 10HP AC Motor



MERRITT DAVIS TURA 84 84" TRAVERSING TAKE-UP



DAVIS STANDARD 84" SHAFTLESS TAKE-UP



# TAKE-UPS, SPOOLERS & PAY-OFFS

## TAKE-UPS, SPOOLERS & PAY-OFFS CON'T

DAVIS STANDARD 42X84X54 84" SHAFTLESS TAKE-UP, s/n C-9287, S.O. 27527-C, 5HP AC Motor

DAVIS STANDARD 84-64 84" SHAFTLESS TAKE-UP, s/n G2302, S.O. 90670, w/ 5HP AC Motor

DAVIS ELECTRIC 72" SHAFTLESS TAKE-UP, s/n NA, w/ 5HP AC Motor

ENTWISTLE GM-VSC-1 72" A-FRAME TAKE-UP, s/n 111

ENTWISTLE 72" TAKE-UP, s/n NA

EJR 561-36 SHAFTLESS TAKE-UP, s/n 1125561-12 20 01, w/ 1.5" Pintles, 5HP AC Motor, Guide Stand

MERRITT DAVIS 84" TRAVERSING MOTORIZED PAYOFF, w/ Dancer, 16" Sheaves, 4x3

DAVIS STANDARD 36" 'HALF-MOON' SHAFT PAYOFF

(3) FERRO TECHNIQUE FDPO 24" PAYOFFS

ENTWISTLE DUAL FLYER CONE PAYOFF, w/ Reel Trucks

2009 FINE NBPO-48-2 48" DRAG PAYOFF, s/n F9-90126, w/ Electric Brake

ENTWISTLE DUAL FLYER CONE PAYOFF, w/DAVIS STANDARD Reel Trucks

TULSA 84" PAYOFF

POPS 84" PORTAL PAYOFF, s/n 43096101

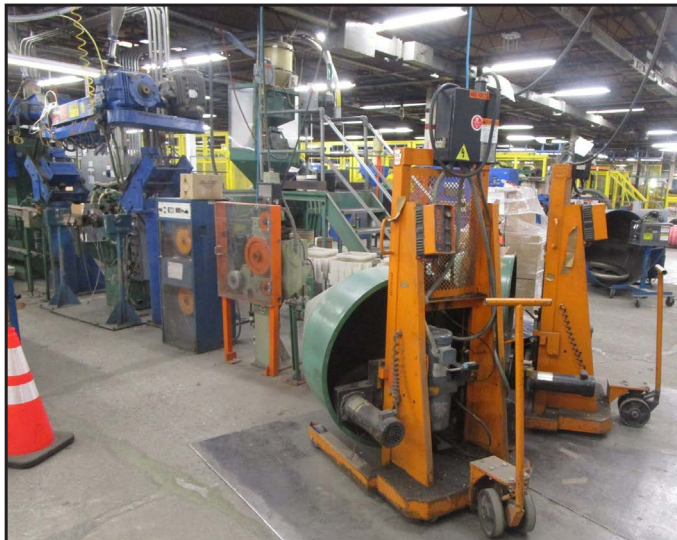
FINE 36" PAYOFF

(24) HUESTIS 36" DRAG PAYOFFS

WINDINGS D500 SPOOLER, No Control



TULSA 84IN SHAFTLESS PAYOFF



ENTWISTLE DUAL FLYER CONE PAYOFF W/REEL TRUCKS



DAVIS ELECTRIC TAP-30 PARALLEL AXIS DUAL REEL TAKE-UP



24 AVAILABLE

HUESTIS 36" DRAG PAYOFFS

For auction inquiries,  
please contact Jennifer Reiner at  
(847) 545-6374 or  
[jennifer@perfectionindustrial.com](mailto:jennifer@perfectionindustrial.com)

Bidding Available Through  
**BidSpotter**



# MULTIPASS CAPSTANS, CATERPULLERS & ACCUMULATORS

## MULTIPASS CAPSTANS, CATERPULLERS & ACCUMULATORS

**NEXTROM 14" MULTIPASS CAPSTAN**, w/ 5HP AC Motor

**VITECK LTM-12-220 12" MULTIPASS CAPSTAN**, s/n 0004-819, w/ 10HP Drive (in main Temp Panel)

**DAVIS ELECTRIC MULTIPASS CAPSTAN**

**MERRITT DAVIS CAT-TRAK 80 CATERPULLER CAPSTAN**, s/n 0-008-258, w/ 5.5" Wide Belt Motor

**CUSTOM 60" CATERPULLER CAPSTAN**, w/ 3.5" wide belt

**MERRITT DAVIS H80-H15 TU TAKE-UP DANCER**, s/n 0-003-259, w/ 16" Sheaves

**TEC TAKE-UP DANCER**, 14", 6x5

**CUSTOM 60' (APPROX.) HORIZONTAL PAYOFF ACCUMULATOR**, 5x5, 16" Sheaves

**CUSTOM 45' (APPROX.) HORIZONTAL OVERHEAD PAYOFF ACCUMULATOR**

**CUSTOM 30' (APPROX.) FLOOR-MOUNTED HORIZONTAL TAKE-UP ACCUMULATOR**

**CLIPPER TENSION STAND**, s/n TB8-200-P5299-51980 (Missing a Sheave)



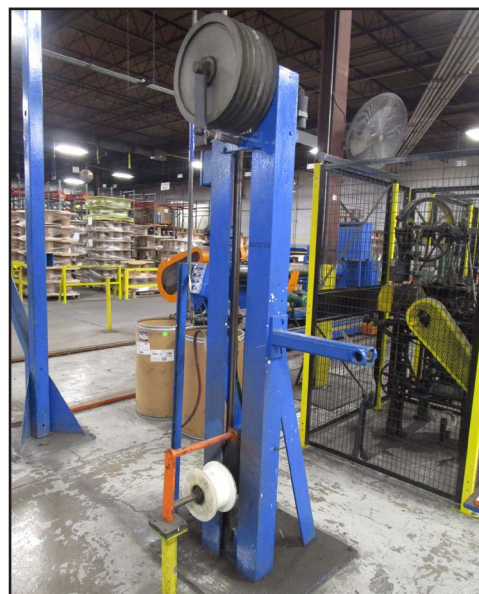
DAVIS ELECTRIC MULTIPASS CAPSTAN



VITECK LTM-12-220 12" MULTIPASS CAPSTAN



MERRITT DAVIS CAT-TRAK 80 CATERPULLER CAPSTAN



MERRITT DAVIS H80-H15 TU TAKE-UP DANCER



TEC TAKE-UP DANCER



DAVIS ELECTRIC 8IN DANCER



CUSTOM 30' APPROX. HORIZ. TAKE-UP ACCUMULATOR



CUSTOM 45' APPROX. HORIZ. TAKE-UP ACCUMULATOR



# BRAIDERS, MISCELLANEOUS MACHINERY

## BRAIDERS

**NEW ENGLAND BUTT 48-CARRIER CB-1 CABLE BRAIDER**, w/ 6" Horn Gears, Wire Carriers, 36" Capstan, Motor

(2) **WARDWELL 24-CARRIER BRAIDERS**

(5) **WARDWELL MODEL G 16-CARRIER BRAIDERS**, w/ Wire, 36" Payoff & Take-up  
**LOT OF WARDWELL CHANGE GEARS**

## MISCELLANEOUS MACHINERY

**KENRAKE WST-200 SPIRAL STRIPER**, s/n 5250, 10' Oven

**BRABENDER LAB EXTRUDER**, Model D-52, s/n 706011

**WATSON 60" DUAL WHEEL CAPSTAN ASSEMBLY**, s/n #6259, L-R, 5x4, 2.5" Grooves

**NEW ENGLAND BUTT 60" DUAL WHEEL CAPSTAN ASSEMBLY**, R-L, 6x5, 2.5" Grooves, 5HP Vector Motor, NO Drive

**DAVIS STANDARD 48" DUAL WHEEL CAPSTAN**, w/ 10HP AC Motor

**48" BELT WRAP CAPSTAN**, w/ 10HP AC Motor, NO Drive

**GODDERIDGE TYPE RUB.C 24" CONCENTRIC TAPING HEAD**, s/n 40013, w/ 6" Core

**WMCA 24" CONCENTRIC TAPING HEAD**, s/n 35283

**18" ECCENTRIC TAPING HEAD**, w/ 6" Core, 5HP AC Motor, NO Drive

**CLINTON HF20E SPARK TESTER**

(3) **PREMIER 5158-33R 15HP BULK CONVEYING BLOWERS**

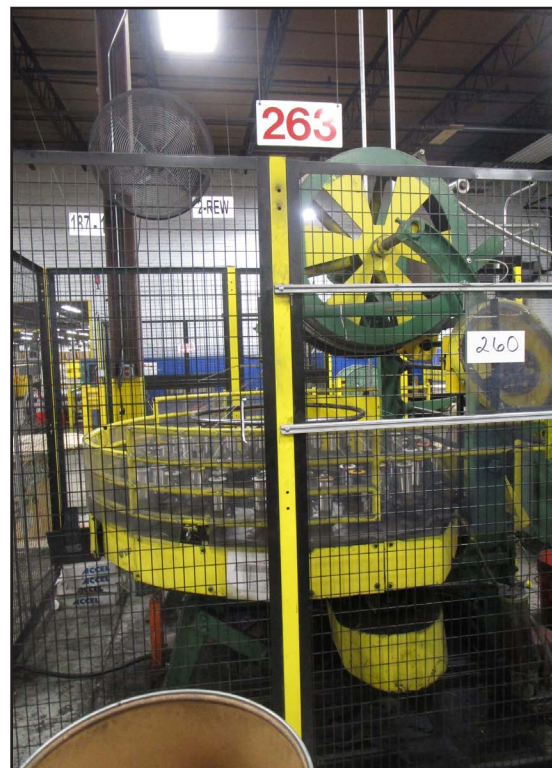
**AEC ESH-500-000 100 HP GRANULATOR**, s/n GSH50600304001, 28"x28" Throat Opening, Hopper, Vacuum Loader, Conveyor

(2) **GEHNRICH CURING OVENS**

(4) **PEABODY 9' DIAMETER BOLTED SILOS**

(3) **WULFTEC WHP-200 STRETCH WRAPPERS**

(2) **AH 1/2T FREE STANDING JIBS**



NEB CB-1 48-CARRIER CABLE BRAIDER



WARDWELL G 16-CARRIER BRAIDER



KENRAKE WST-200 SPIRAL STRIPER



AEC ESH-500-000 GRANULATOR



PREMIER 5158-33R 15HP BULK CONVEYING BLOWERS



VIEW OF DRIVE THROUGH PALLET RACKING



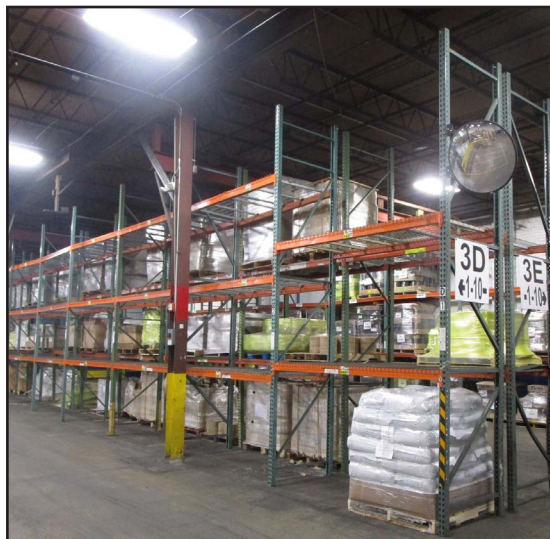
VIEW OF FLAMMABLE LIQUID STORAGE CABINETS



# MISCELLANEOUS MACHINERY



(4) PEABODY 9' DIAMETER BOLTED SILOS



VIEW OF ADJ. PALLET RACKING



FINN POWER CC221S CRIMPER

For auction inquiries, please contact Jennifer Reiner at  
(847) 545-6374 or [jennifer@perfectionindustrial.com](mailto:jennifer@perfectionindustrial.com)

Bidding Available Through  
**BidSpotter**

View our current auction schedule at [www.perfectionindustrial.com](http://www.perfectionindustrial.com)

## SALE DATE

Tuesday, September 12, at 10 AM CT

## SALE LOCATION

1430 12th Street,  
Waukegan, IL 60085

## INSPECTION

Monday, September 11, from 8:30 AM  
to 4 PM CT, by appointment only

### REMOVAL

**All items must be removed no later than Friday, September 29. All removal is strictly on an appointment only basis.** NOTICE to Auction Buyers: Client will disconnect & skid purchased auction items within our Safe Work capabilities. Client will not load trucks departing to customers. Auction Buyers are responsible for the loading of items, utilizing one of the pre-approved site riggers. Contact information for the required rigging companies will be listed online and included with all Buyer invoices.

### TERMS OF SALE

**An 18% Buyer's Premium will be charged on all assets purchased by buyers providing full payment is made within 48 hours following the sale.** Acceptable forms of payment are cashier's check, company check (with bank letter of guarantee) or wire transfer within 48 hours of the sale close. For any Buyers failing to pay within the 48 hour stated payment period, the Buyer's Premium will be increased to 20%. All invoices paid with a credit card are subject to a 20% Buyer's Premium. Everything will be sold to the highest bidder, in accordance with the Auctioneer's customary "Terms of Sale", copies of which will be posted on the Auctioneer's website and subject to additional terms announced the day of sale. All items are sold "As is, Where is" without any warranty, express or implied.

### FURTHER INFORMATION

For auction inquiries, please contact Jennifer Reiner at (847) 545-6374 or [jennifer@perfectionindustrial.com](mailto:jennifer@perfectionindustrial.com).

### AUCTION LICENSE

Perfection Industrial Sales IL Firm Lic. #444.000438, Steve Kleba IL Auctioneer Lic. #441.001778

To discuss your requirements for an auction, please call Perfection Industrial **+1-847-545-6374**