



PERFECTION
Industrial Sales

ONLINE AUCTION

Surplus Assets of a

WORLD LEADING MINING EQUIPMENT MANUFACTURER

FEATURING:

MESSER & ESAB FLAME
CUTTERS, FLAME CUTTING
SPARE PARTS & ACCESSORIES,
GA GRAY/GIDDINGS 108"
VERTICAL BORING MILL,
CINCINNATI VERTICAL MILL,
JIG BORER, ENGINE LATHE,
RADIAL ARM DRILLS,
BANDSAWS, GRINDERS,
WELDING EQUIPMENT,
TOOL ROOM MACHINERY,
TOOLS, STORAGE CABINETS
& ASSORTED PLANT SUPPORT



2005

MESSER OMNIMAT
L7500 OXY ACETYLENE
TRAVELING GANTRY
CUTTING CENTER



>
GA GRAY/GIDDINGS
200 SERIES 108"
CNC VERTICAL
BORING MILL

<
MESSER
BEVELING HEAD



Sale Closing Date: Tuesday, June 17, 2014 1:00 P.M. CDT

Sale Location: 1100 Milwaukee Avenue, South Milwaukee, Wisconsin 53172

Inspection: Monday, June 16, from 8:00 A.M. to 3:00 P.M. CDT



PERFECTION
Industrial Sales

Perfection Industrial Sales
ph 847-427-3333 • fax 847-427-8884
www.perfectionindustrial.com

Online Bidding at
www.perfectionindustrial.com

CNC FLAME CUTTING MACHINES, CNC VERTICAL BORING MILL & MORE



MESSER OMNIMAT L7500 OXY ACETYLENE TRAVELING GANTRY CUTTING CENTER



ESAB AVENGER XP-3500 OXY ACETYLENE TRAVELING GANTRY CUTTING CENTER



ESAB AVENGER XP-3500 OXY ACETYLENE TRAVELING GANTRY CUTTING CENTER



GRIZZLY GXL-1800 OXY ACETYLENE TRAVELING GANTRY CUTTING CENTER

CNC FLAME CUTTING MACHINES

(2) MESSER OMNIMAT L7500 OXY ACETYLENE TRAVELING GANTRY CUTTING CENTER, S/N 260.314.06 (2006), 260.313.05 (2005), 240" Between Uprights, 360" Travel, (3) Oxy Acetylene Heads, (2) Beveling Heads, 23–52 Degree of Bevel, 4" Straight Cut Max. Plate Thickness, 3" Max Cut When Beveling, 20" Min. Torch Head Distance, Equipped with Messer PC Based CNC, Multi-Piece Dry Table

(2) ESAB AVENGER XP-3500 OXY ACETYLENE TRAVELING GANTRY CUTTING CENTER, S/N 0560941396, 0560941697, (2007), 102" Distance Between Uprights, 260" Travel, (3) Oxy Heads, 6" Max. Thickness When Cutting Straight, 9" Minimum Torch Head Distance, Equipped w/ESAB Vision 55 CNC, Dry Table



BANCROFT ROTARY OXY ACETYLENE ROTARY CIRCLE BURNER

Grizzly GXL-1800 OXY ACETYLENE TRAVELING GANTRY CUTTING CENTER, S/N 0063 (1980), 192" Distance Between Uprights, 400" Travel, (2) Oxy Heads, Equipped w/Autopath GX CNC, Multi-Piece Dry Tables

ALSO AVAILABLE
BANCROFT ROTARY OXY ACETYLENE ROTARY CIRCLE BURNER, S/N 4467/136-510

Many Spare Parts Also Available Including: Spare Tables; Torch Tips; Beveling Head; Heat Caps; Sensors; Regulators; Valves and Electronics

CNC VERTICAL BORING MILL

GA GRAY/GIDDINGS 200 SERIES 108" CNC VERTICAL BORING MILL, S/N 9953, 108" Table Diameter, 120" Max. Swing, 84" Max. Height Under Rail, 120" Max. Facing Capacity, 2.4–150 RPM (2-Speed), 100 HP, Equipped w/Allen Bradley 9000 Series CNC Control, Rebuilt and Retrofitted in 1998



VIEW OF TORCH CUTTING TIPS



MESSER MG1-L SPARE TABLES

Inspection:
Monday, June 16
from 8:00 A.M. to
3:00 P.M. CDT

To discuss your requirements for an auction, please call Perfection Industrial 847.427.3333

GEAR HOBBER, RADIAL ARM DRILL, JIG BORER, TOOL ROOM MACHINERY

1994



<
GIDDINGS & LEWIS BICKFORD 6' X 17" CHIPMASTER RADIAL ARM DRILL



LARGE SELECTION OF TOOLING

GEAR HOBBER

GOULD & EBERHARDT 96HWD GEAR HOBBER, S/N 98036 (1982), 96" Max. Cutting Diameter, 125" Max. Work Piece Diameter, 42" Spur/36" Max. Gear Face, 1 Max. DP, 15-3/4" Max. Hob Diameter, 40 HP Main Motor, 60,000 Lb Max. Work Weight, Equipped w/Variable Frequency Drive and Main Motor, Digital Readout for X/Y Axis

RADIAL ARM DRILL

GIDDINGS & LEWIS BICKFORD 6' X 17" CHIPMASTER RADIAL ARM DRILL, S/N 5NE781, 17" Column, 6' Arm, 35-1,250 RPM Spindle Speed, Mounted on Rails

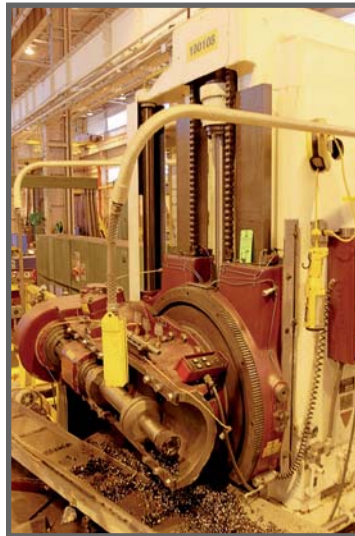
Large Selection of Tooling Also Available

JIG BORER

FOSDICK NO. 54 JIG BORER, 22" x 54" Table, 26" Throat, 16" Head Vertical Travel, 30-1,800 Spindle RPM



<
GOULD & EBERHARDT 96HWD GEAR HOBBER
>



AMERICAN 16" X 78" PACEMAKER ENGINE LATHE



FOSDICK NO. 54 JIG BORER



CINCINNATI NO.2 MILLING MACHINE



DOALL D618-7 SURFACE GRINDER



POWERMATIC 87 VERTICAL BANDSAW

Sale Closing Date:
Tuesday, June 17
2014 1:00 P.M. CDT

Inspection:
Monday, June 16
from 8:00 A.M. to
3:00 P.M. CDT

TOOL ROOM MACHINERY

CINCINNATI NO.2 MILLING MACHINE, S/N 2A2VIL-27, 12" x 54" Table, 15" Throat, 20-500 Spindle RPM

AMERICAN 16" X 78" PACEMAKER ENGINE LATHE, 16" Swing, 78" Between Centers, 23-1,500 RPM, 15" 4-Jaw Chuck, Equipped w/Tool Post and Steady Rest

DOALL D618-7 SURFACE GRINDER, S/N 219-76716

POWERMATIC 87 VERTICAL BANDSAW, S/N 4-5395, 24" Square Table, 19" Throat

MARVEL HIGH-SPEED BALL BEARING NO.5A HORIZONTAL BANDSAW

GRIZZLY G9957 12" TABLE SAW

WILTON 20" 2223VS VARIABLE SPEED DRILL PRESS, S/N 7030405



GRIZZLY G9957 12" TABLE SAW

WELDING, TRANSFER CARS & MORE



<
**LINCOLN IDEALARC
DC-31 WELDING
POWER SOURCE**



>
**LINCOLN MOBIFLEX
200-M CPL WELDING
FUME COLLECTOR**



82" X 34" WELDING TABLE



WELDING TABLE



HEAT CONTROL UNIT



**OVER (100) PNEU.
GRINDERS
AND TOOLS**



ERIEZ 1,900 LB LIFTING MAGNET



15 TON ZENAR TRANSFER CAR



SHIPPING DESKS



**OVER (100) PNEU.
GRINDERS AND TOOLS**



SHOP FANS

WELDING

**MILLER SRS1500A DC WELDING
POWER SOURCE, S/N JA372261**

**LINCOLN IDEALARC DC-31 WELDING
POWER SOURCE, S/N 538-418**

**MEMCO MS-64 24V WIRE FEEDER,
S/N KG048383**

**LINCOLN MOBIFLEX 200-M CPL
WELDING FUME COLLECTOR**

(4) SAS AIR SYSTEMS FUME COLLECTORS

54" X 82" PRE-HEAT TABLE

38-1/2" x 99" x 1-1/2" WELDING TABLE W/6" VISE

82" X 34" WELDING TABLE

(4) 30" X 30" X 1" WELDING TABLES W/VISE

ALSO AVAILABLE: Huge Selection of New and Used
Lincoln Electric Welding Drum Cones; Welding Drum
Dollies; Drum Hose and Adaptors; ESAB and Tri-Mark
Welding Wire

TRANSFER CARS

25 TON ZENAR TRANSFER CAR, S/N C1011

(2) 15 TON ZENAR TRANSFER CARS, S/N C1014, C1012

ALSO AVAILABLE

Over (100) Pneumatic Grinders and Tools; (40) Fiberglass
Ladders; (2) ERIEZ 1,900 Lb LIFTING MAGNETS;
(2) DAYTON 4YE62 WET/DRY VACS; NILFISK CFM
INDUSTRIAL VACUUM; 6 HP EXCEL KC2800 POWER
WASHER; Hammers and Sledge Hammers; Wire Brushes;
Work Lights; Ball Bearing Tool Cabinets; Steel Lockers;
Shop Fans and More.



**BALL BEARING
TOOL CABINET**



**BALL BEARING
TOOL CABINET**



FIBERGLASS LADDERS

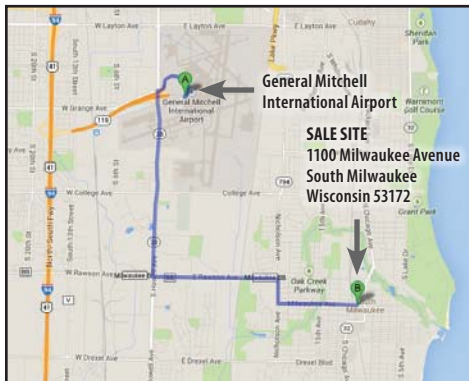


**STARRETT 6' DIGITAL
HEIGHT GAUGE**

Online Bidding at

www.perfectionindustrial.com

To discuss your requirements for an auction, please call Perfection Industrial 847.427.3333



Surplus Assets of a

WORLD LEADING MINING EQUIPMENT MANUFACTURER

AIRPORT: General Mitchell International Airport

HOTELS

Best Western Milwaukee (414) 769-2100

5105 S Howell Avenue, Milwaukee, WI, 53207

Hilton Garden Inn Milwaukee (414) 481-8280

5890 S Howell Avenue, Milwaukee, WI, 53207

**Online Bidding at
www.perfectionindustrial.com**

TERMS OF SALE

Payment: A 18% buyer's premium will be charged on all assets. The buyer's premium will be reduced to 15% for payments made by means of cash, cashier's check, company check (with bank letter of guarantee) or wire transfer within 48 hours of sale close. All items are sold "As is, Where is" without any warranties expressed or implied. Please visit www.perfectionindustrial.com for our full terms and conditions.

REMOVAL

All items must be removed by Thursday, July 3, 2014. NO EXCEPTIONS. Removal times are 8:00 A.M. - 4:00 P.M. ET, Monday through Friday.

FURTHER INFORMATION

For further information contact John Bopp at Cell: (708) 606-3240 or Email: johnb@perfectionindustrial.com

Sale Closing Date: Tuesday, June 17, 2014 1:00 P.M. CDT

Sale Location: 1100 Milwaukee Avenue, South Milwaukee, Wisconsin 53172

Inspection: Monday, June 16, from 8:00 A.M. to 3:00 P.M. CDT