



**PERFECTION**  
Industrial Sales

# ONLINE AUCTION

Surplus Assets of a

## WORLD LEADING MINING EQUIPMENT MANUFACTURER

FEATURING:

MESSER & ESAB FLAME  
CUTTERS, FLAME CUTTING  
SPARE PARTS & ACCESSORIES,  
GA GRAY/GIDDINGS 108"  
VERTICAL BORING MILL,  
CINCINNATI VERTICAL MILL,  
JIG BORER, ENGINE LATHE,  
RADIAL ARM DRILLS,  
BANDSAWS, GRINDERS,  
WELDING EQUIPMENT,  
TOOL ROOM MACHINERY,  
TOOLS, STORAGE CABINETS  
& ASSORTED PLANT SUPPORT



**2005**

MESSER OMNIMAT  
L7500 OXY ACETYLENE  
TRAVELING GANTRY  
CUTTING CENTER



>  
GA GRAY/GIDDINGS  
200 SERIES 108"  
CNC VERTICAL  
BORING MILL

<  
MESSER  
BEVELING HEAD



**Sale Closing Date:** Tuesday, June 17, 2014 1:00 P.M. CDT

**Sale Location:** 1100 Milwaukee Avenue, South Milwaukee, Wisconsin 53172

**Inspection:** Monday, June 16, from 8:00 A.M. to 3:00 P.M. CDT



**PERFECTION**  
Industrial Sales

Perfection Industrial Sales  
ph 847-427-3333 • fax 847-427-8884  
[www.perfectionindustrial.com](http://www.perfectionindustrial.com)

Online Bidding at  
[www.perfectionindustrial.com](http://www.perfectionindustrial.com)



# CNC FLAME CUTTING MACHINES, CNC VERTICAL BORING MILL & MORE



MESSER OMNIMAT L7500 OXY ACETYLENE TRAVELING GANTRY CUTTING CENTER



ESAB AVENGER XP-3500 OXY ACETYLENE TRAVELING GANTRY CUTTING CENTER



ESAB AVENGER XP-3500 OXY ACETYLENE TRAVELING GANTRY CUTTING CENTER



GRIZZLY GXL-1800 OXY ACETYLENE TRAVELING GANTRY CUTTING CENTER

## CNC FLAME CUTTING MACHINES

(2) MESSER OMNIMAT L7500 OXY ACETYLENE TRAVELING GANTRY CUTTING CENTER, S/N 260.314.06 (2006), 260.313.05 (2005), 240" Between Uprights, 360" Travel, (3) Oxy Acetylene Heads, (2) Beveling Heads, 23–52 Degree of Bevel, 4" Straight Cut Max. Plate Thickness, 3" Max Cut When Beveling, 20" Min. Torch Head Distance, Equipped with Messer PC Based CNC, Multi-Piece Dry Table

(2) ESAB AVENGER XP-3500 OXY ACETYLENE TRAVELING GANTRY CUTTING CENTER, S/N 0560941396, 0560941697, (2007), 102" Distance Between Uprights, 260" Travel, (3) Oxy Heads, 6" Max. Thickness When Cutting Straight, 9" Minimum Torch Head Distance, Equipped w/ESAB Vision 55 CNC, Dry Table



Grizzly GXL-1800 OXY ACETYLENE TRAVELING GANTRY CUTTING CENTER, S/N 0063 (1980), 192" Distance Between Uprights, 400" Travel, (2) Oxy Heads, Equipped w/Autopath GX CNC, Multi-Piece Dry Tables

**ALSO AVAILABLE**  
BANCROFT ROTARY OXY ACETYLENE ROTARY CIRCLE BURNER, S/N 4467/136-510

Many Spare Parts Also Available Including: Spare Tables; Torch Tips; Beveling Head; Heat Caps; Sensors; Regulators; Valves and Electronics

BANCROFT ROTARY OXY ACETYLENE ROTARY CIRCLE BURNER

## CNC VERTICAL BORING MILL

GA GRAY/GIDDINGS 200 SERIES 108" CNC VERTICAL BORING MILL, S/N 9953, 108" Table Diameter, 120" Max. Swing, 84" Max. Height Under Rail, 120" Max. Facing Capacity, 2.4–150 RPM (2-Speed), 100 HP, Equipped w/Allen Bradley 9000 Series CNC Control, Rebuilt and Retrofitted in 1998



VIEW OF TORCH CUTTING TIPS



MESSER MG1-L SPARE TABLES

**Inspection:**  
Monday, June 16  
from 8:00 A.M. to  
3:00 P.M. CDT

To discuss your requirements for an auction, please call Perfection Industrial 847.427.3333



# GEAR HOBBER, RADIAL ARM DRILL, JIG BORER, TOOL ROOM MACHINERY

1994



<  
**GIDDINGS & LEWIS BICKFORD 6' X 17" CHIPMASTER RADIAL ARM DRILL**



**LARGE SELECTION OF TOOLING**

## GEAR HOBBER

**GOULD & EBERHARDT 96HWD GEAR HOBBER**, S/N 98036 (1982), 96" Max. Cutting Diameter, 125" Max. Work Piece Diameter, 42" Spur/36" Max. Gear Face, 1 Max. DP, 15-3/4" Max. Hob Diameter, 40 HP Main Motor, 60,000 Lb Max. Work Weight, Equipped w/Variable Frequency Drive and Main Motor, Digital Readout for X/Y Axis

## RADIAL ARM DRILL

**GIDDINGS & LEWIS BICKFORD 6' X 17" CHIPMASTER RADIAL ARM DRILL**, S/N 5NE781, 17" Column, 6' Arm, 35-1,250 RPM Spindle Speed, Mounted on Rails

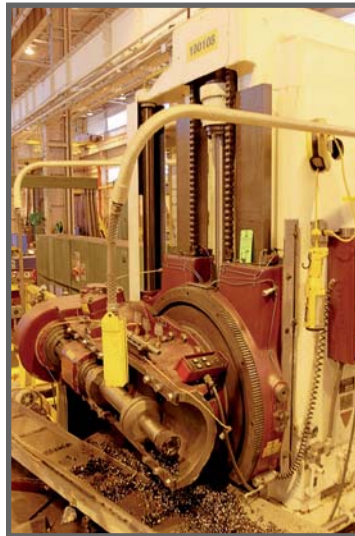
**Large Selection of Tooling Also Available**

## JIG BORER

**FOSDICK NO. 54 JIG BORER**, 22" x 54" Table, 26" Throat, 16" Head Vertical Travel, 30-1,800 Spindle RPM



<  
**GOULD & EBERHARDT 96HWD GEAR HOBBER**  
>



**AMERICAN 16" X 78" PACEMAKER ENGINE LATHE**



**FOSDICK NO. 54 JIG BORER**



**CINCINNATI NO.2 MILLING MACHINE**



**DOALL D618-7 SURFACE GRINDER**



**POWERMATIC 87 VERTICAL BANDSAW**

**Sale Closing Date:**  
**Tuesday, June 17**  
**2014 1:00 P.M. CDT**

**Inspection:**  
**Monday, June 16**  
**from 8:00 A.M. to**  
**3:00 P.M. CDT**

## TOOL ROOM MACHINERY

**CINCINNATI NO.2 MILLING MACHINE**, S/N 2A2VIL-27, 12" x 54" Table, 15" Throat, 20-500 Spindle RPM

**AMERICAN 16" X 78" PACEMAKER ENGINE LATHE**, 16" Swing, 78" Between Centers, 23-1,500 RPM, 15" 4-Jaw Chuck, Equipped w/Tool Post and Steady Rest

**DOALL D618-7 SURFACE GRINDER**, S/N 219-76716

**POWERMATIC 87 VERTICAL BANDSAW**, S/N 4-5395, 24" Square Table, 19" Throat

**MARVEL HIGH-SPEED BALL BEARING NO.5A HORIZONTAL BANDSAW**

**GRIZZLY G9957 12" TABLE SAW**

**WILTON 20" 2223VS VARIABLE SPEED DRILL PRESS**, S/N 7030405



**GRIZZLY G9957 12" TABLE SAW**



# WELDING, TRANSFER CARS & MORE



<  
**LINCOLN IDEALARC  
DC-31 WELDING  
POWER SOURCE**



>  
**LINCOLN MOBIFLEX  
200-M CPL WELDING  
FUME COLLECTOR**



**82" X 34" WELDING TABLE**



**WELDING TABLE**



**HEAT CONTROL UNIT**



**OVER (100) PNEU.  
GRINDERS  
AND TOOLS**



**ERIEZ 1,900 LB LIFTING MAGNET**



**15 TON ZENAR TRANSFER CAR**



**SHIPPING DESKS**



**OVER (100) PNEU.  
GRINDERS AND TOOLS**



**SHOP FANS**

## WELDING

**MILLER SRS1500A DC WELDING  
POWER SOURCE, S/N JA372261**

**LINCOLN IDEALARC DC-31 WELDING  
POWER SOURCE, S/N 538-418**

**MEMCO MS-64 24V WIRE FEEDER,  
S/N KG048383**

**LINCOLN MOBIFLEX 200-M CPL  
WELDING FUME COLLECTOR**

**(4) SAS AIR SYSTEMS FUME COLLECTORS**

**54" X 82" PRE-HEAT TABLE**

**38-1/2" x 99" x 1-1/2" WELDING TABLE W/6" VISE**

**82" X 34" WELDING TABLE**

**(4) 30" X 30" X 1" WELDING TABLES W/VISE**

**ALSO AVAILABLE:** Huge Selection of New and Used  
Lincoln Electric Welding Drum Cones; Welding Drum  
Dollies; Drum Hose and Adaptors; ESAB and Tri-Mark  
Welding Wire

## TRANSFER CARS

**25 TON ZENAR TRANSFER CAR, S/N C1011**

**(2) 15 TON ZENAR TRANSFER CARS, S/N C1014, C1012**

## ALSO AVAILABLE

Over (100) Pneumatic Grinders and Tools; (40) Fiberglass  
Ladders; (2) ERIEZ 1,900 Lb LIFTING MAGNETS;  
(2) DAYTON 4YE62 WET/DRY VACS; NILFISK CFM  
INDUSTRIAL VACUUM; 6 HP EXCEL KC2800 POWER  
WASHER; Hammers and Sledge Hammers; Wire Brushes;  
Work Lights; Ball Bearing Tool Cabinets; Steel Lockers;  
Shop Fans and More.



**BALL BEARING  
TOOL CABINET**



**BALL BEARING  
TOOL CABINET**



**FIBERGLASS LADDERS**

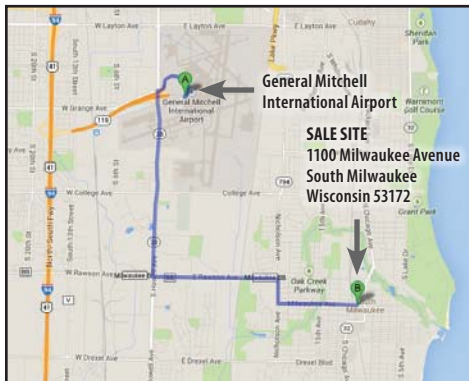


**STARRETT 6' DIGITAL  
HEIGHT GAUGE**

**Online Bidding at**

**www.perfectionindustrial.com**

**To discuss your requirements for an auction, please call Perfection Industrial 847.427.3333**



Surplus Assets of a

## WORLD LEADING MINING EQUIPMENT MANUFACTURER

**AIRPORT:** General Mitchell International Airport

**DIRECTION**

**To come:**

### HOTELS

Best Western Milwaukee ..... (414) 769-2100

5105 S Howell Avenue, Milwaukee, WI, 53207

Hilton Garden Inn Milwaukee ..... (414) 481-8280

5890 S Howell Avenue, Milwaukee, WI, 53207

**Online Bidding at [www.perfectionindustrial.com](http://www.perfectionindustrial.com)**

### TERMS OF SALE

**Payment:** A 18% buyer's premium will be charged on all assets. The buyer's premium will be reduced to 15% for payments made by means of cash, cashier's check, company check (with bank letter of guarantee) or wire transfer within 48 hours of sale close. All items are sold "As is, Where is" without any warranties expressed or implied. Please visit [www.perfectionindustrial.com](http://www.perfectionindustrial.com) for our full terms and conditions.

### REMOVAL

All items must be removed by **Friday, June 13, 2014**. NO EXCEPTIONS.  
Removal times are 8:00 A.M. – 4:00 P.M. ET, Monday through Friday.

### FURTHER INFORMATION

For further information contact John Bopp at Cell: (708) 606-3240  
or Email: [john@perfectionindustrial.com](mailto:john@perfectionindustrial.com)

**Sale Closing Date: Tuesday, June 17, 2014 1:00 P.M. CDT**

**Sale Location: 1100 Milwaukee Avenue, South Milwaukee, Wisconsin 53172**

**Inspection: Monday, June 16, from 8:00 A.M. to 3:00 P.M. CDT**